

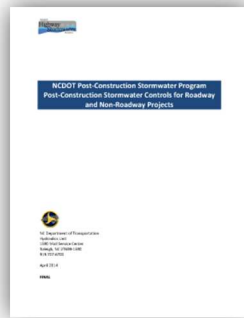
Post-Construction Stormwater Program/ Stormwater Management Plan Quick Reference Guide



<https://connect.ncdot.gov/resources/hydro>

Post-Construction Stormwater Program (PCSP)

NCDOT's National Pollutant Discharge Elimination System (NPDES) stormwater permit requires a Post-Construction Stormwater Program (PCSP). The objective of the PCSP is to manage stormwater runoff from NCDOT projects by requiring structural and non-structural best management practices to protect the water quality of NC's lakes, streams, rivers, and estuaries. The requirements described in the PCSP apply to NCDOT projects which increase built-upon area. As required by the PCSP, NCDOT implements structural and/or non-structural best management practices (BMPs) as described in both the PCSP and the NCDOT BMP Toolbox which are available at the Hydraulics Unit Connect website provided below.

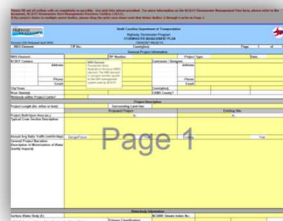


Documentation that the PCSP requirements were followed is provided through the preparation of a Stormwater Management Plan (SMP) if required. The SMP should be completed and uploaded to the Project's 'Hydraulics' discipline folder on the Preconstruction website: <https://connect.ncdot.gov/site/preconstruction/SitePages/Home.aspx> prior to the project being LET or awarded.

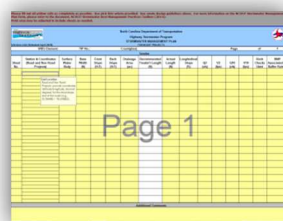
Stormwater Management Plan (SMP)

The Stormwater Management Plan (SMP) is a site specific document used to identify stormwater pollution minimization and treatment efforts proposed for the project. A Microsoft Excel based SMP template is available for download on the Hydraulics Unit Connect website.

The "General Project Information" tab should include all available project information including a project narrative describing the project scope and what structural and non-structural BMP measures have been implemented to preserve or improve stormwater management at the project location.



If a project includes structural stormwater controls, these should be recorded in the appropriate excel tab along with the requested design information.



Submission of Completed SMPs to Hydraulics Unit

The SMP should be completed and uploaded to the Project's 'Hydraulics' discipline folder on the Preconstruction website: <https://connect.ncdot.gov/site/preconstruction/SitePages/Home.aspx> prior to the project being LET or awarded. Alternatively, in the event a project is not on the Preconstruction website, the Hydraulics Unit has set up an email service account for submissions and to answer SMP related questions. Please send SMP questions to the service account email: NCDOT_Hydraulics_SMP@ncdot.gov

Frequently Asked Questions

Q: How do I know if my project must comply with the requirements of the PCSP?

A: All NCDOT projects which increase the amount of built-upon area (BUA), regardless of how much or little, must comply with the PCSP. The work flow charts presented in the PCSP describe the requirements for all projects which increase BUA.

Q: What is built-upon area?

A: BUA and other important definitions are defined on page V of the PCSP. Generally speaking BUA equates to impervious surfaces which restrict rainfall from infiltrating into the ground.

Q: When should I fill out a Stormwater Management Plan (SMP)?

A: Each of the work flow charts presented in the PCSP will indicate whether or not an SMP is required. Most projects will require the preparation of an SMP, but occasionally an SMP is not required. SMPs should be submitted to the Hydraulics Unit for compliance archiving.

Q: Where do I find the SMP form?

A: SMP forms are located on the Hydraulics Unit Connect website provided below.

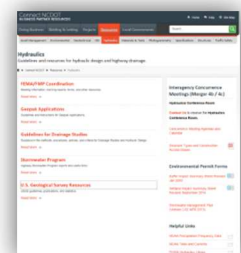
More Information

For more information and access to all Highway Stormwater Program documents and products referenced on this sheet, please visit the Hydraulics Unit Connect website at: <https://connect.ncdot.gov/resources/hydro> and click the "Highway Stormwater Program (HSP)" link.

Contact

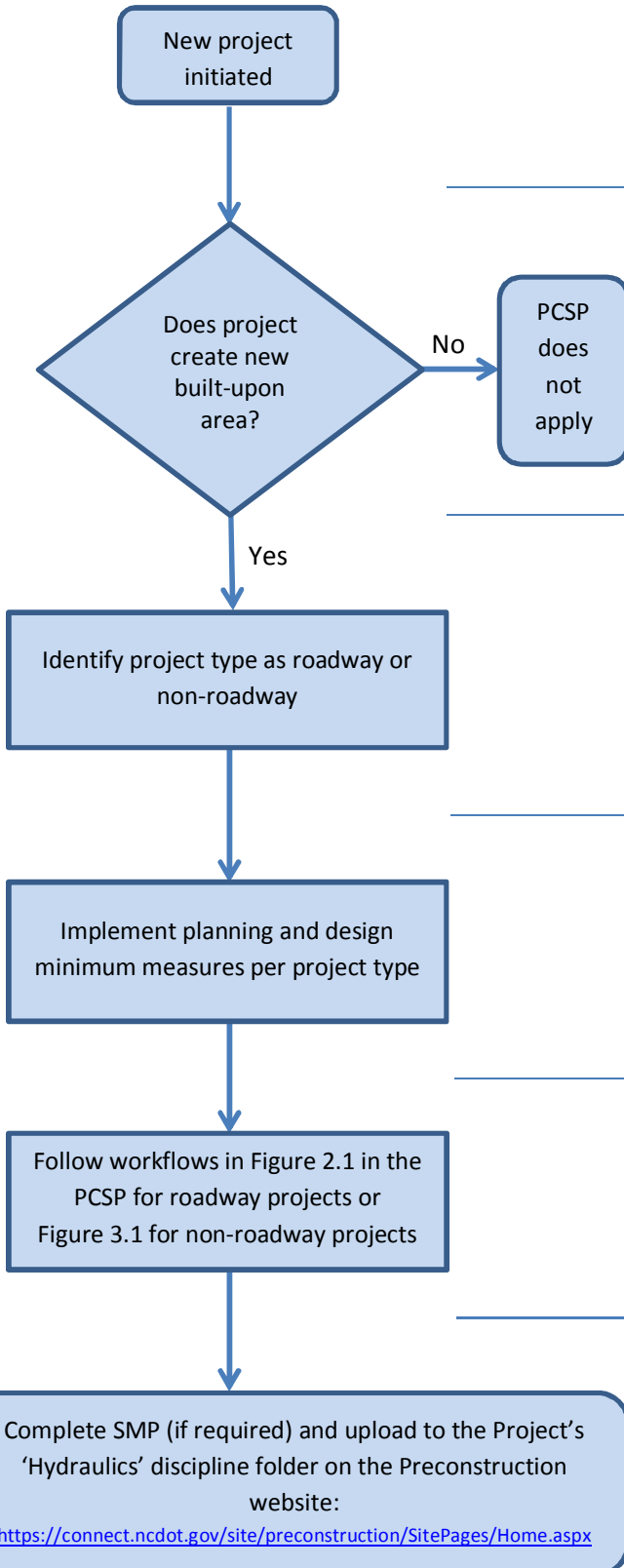
Brian Lipscomb, PE
(919) 707-6735
blipscomb@ncdot.gov

Hydraulics Unit Main Line
(919) 707-6700



The PCSP Workflow

All page and figure references are from the “NCDOT Post-Construction Stormwater Program Post-Construction Stormwater Controls for Roadway and Non-Roadway Projects” which can be found on the Hydraulics Unit Connect website (URL above).



➤ Built-upon Area (BUA) is defined as impervious surface and partially impervious surface to the extent that the partially impervious surface does not allow water to infiltrate through the surface and into the subsoil. If your project maintains or decreases the current BUA, the PCSP does not apply to the project and preparation of an SMP is not required.

➤ The PCSP categorizes all NCDOT projects into one of two types: a roadway project or a non-roadway project. Guidance for categorizing projects into one of these two types can be found on pages 2-1 and 3-1 of the PCSP document. If your project category is difficult to determine, contact the Hydraulics Unit for guidance.

➤ Planning and design minimum measures can be found in Section 2.3 for roadway projects and Section 3.2 for non-roadway projects. Minimum measures used on your project are required to be documented in the project narrative portion of the SMP.

➤ Figures illustrating specific workflows can be found on page 2-2 for roadway projects and pages 3-3 through 3-5 for non-roadway projects.

➤ SMP completion guidance can be found on the front of this sheet and in the “Guidance” tab of the SMP Excel template. The SMP template is downloadable from the Hydraulics Unit Connect website:
<https://connect.ncdot.gov/resources/hydro>