



NORTH CAROLINA

Department of Transportation



Environmental Policy Unit

Derrick Weaver

May 8, 2018

Environmental Policy Unit

Vision and Mission

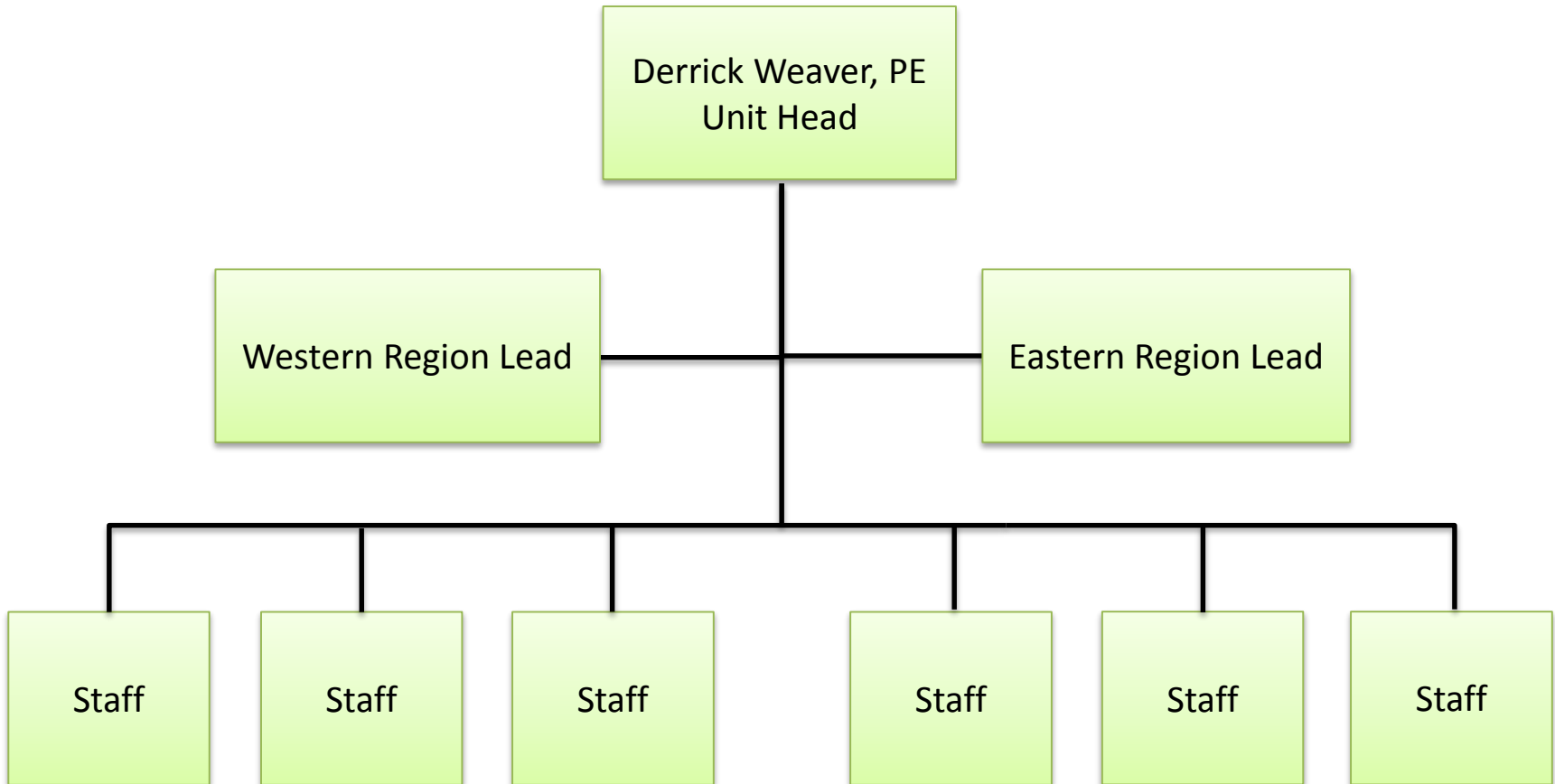
Vision

Provide expertise in all matters related to the State and National Environmental Policy Acts (SEPA & NEPA)

Mission

Provide support to project managers (all modes) and resource agencies to ensure accountability and environmental sensitivity that enhance the economy and vitality of North Carolina

Environmental Policy Unit Structure



Environmental Policy Unit

Goals and Roles/Responsibilities

Goal – Improve Project Delivery



Roles and Responsibilities

- Serve as NEPA/SEPA project planning resource for all Divisions and Modes
- Advise and provide recommendations for overall project planning process

Environmental Policy Unit

Goals and Roles/Responsibilities

Goal – Improve Partnering



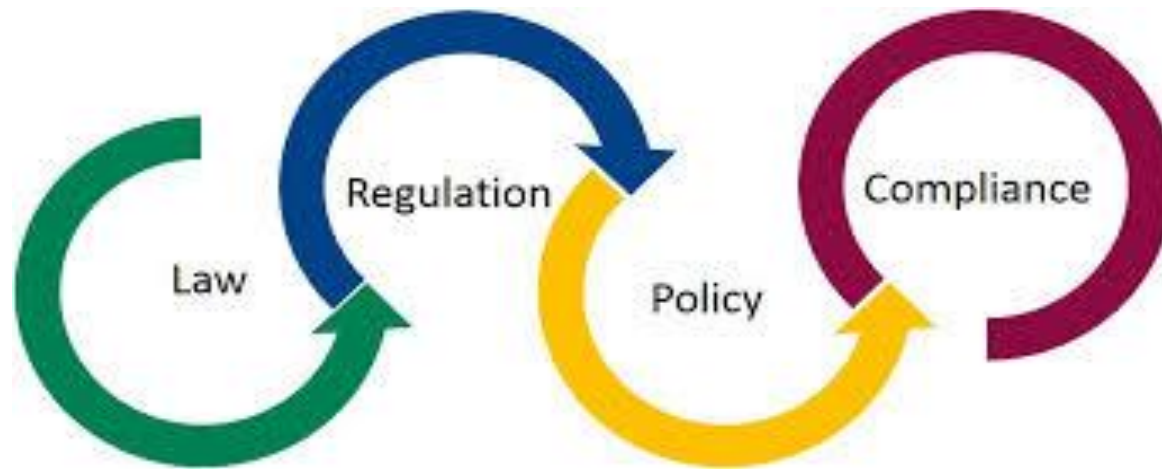
Roles and Responsibilities

- Conduct outreach to be aware of streamlining techniques and best practices
- Coordinate with key stakeholders on NEPA/SEPA and other issues
- Advise and provide support for issue resolution

Environmental Policy Unit

Goals and Roles/Responsibilities

Goal – Ensure NEPA/SEPA Compliance



Roles and Responsibilities

- Review environmental planning documents for compliance and adequacy
- Maintain knowledge of federal/state regulations and legislation

Environmental Policy Unit

Goals and Roles/Responsibilities

Goal – Expedite Project Development



Roles and Responsibilities

- Redesign processes to meet new regulatory requirements and legislation
- Monitor opportunities to remove obstacles and for process improvements
- Serve as advisor on innovative strategies to expedite project development

Environmental Policy Unit

Goals and Roles/Responsibilities

Goal – Improve Quality of Deliverables

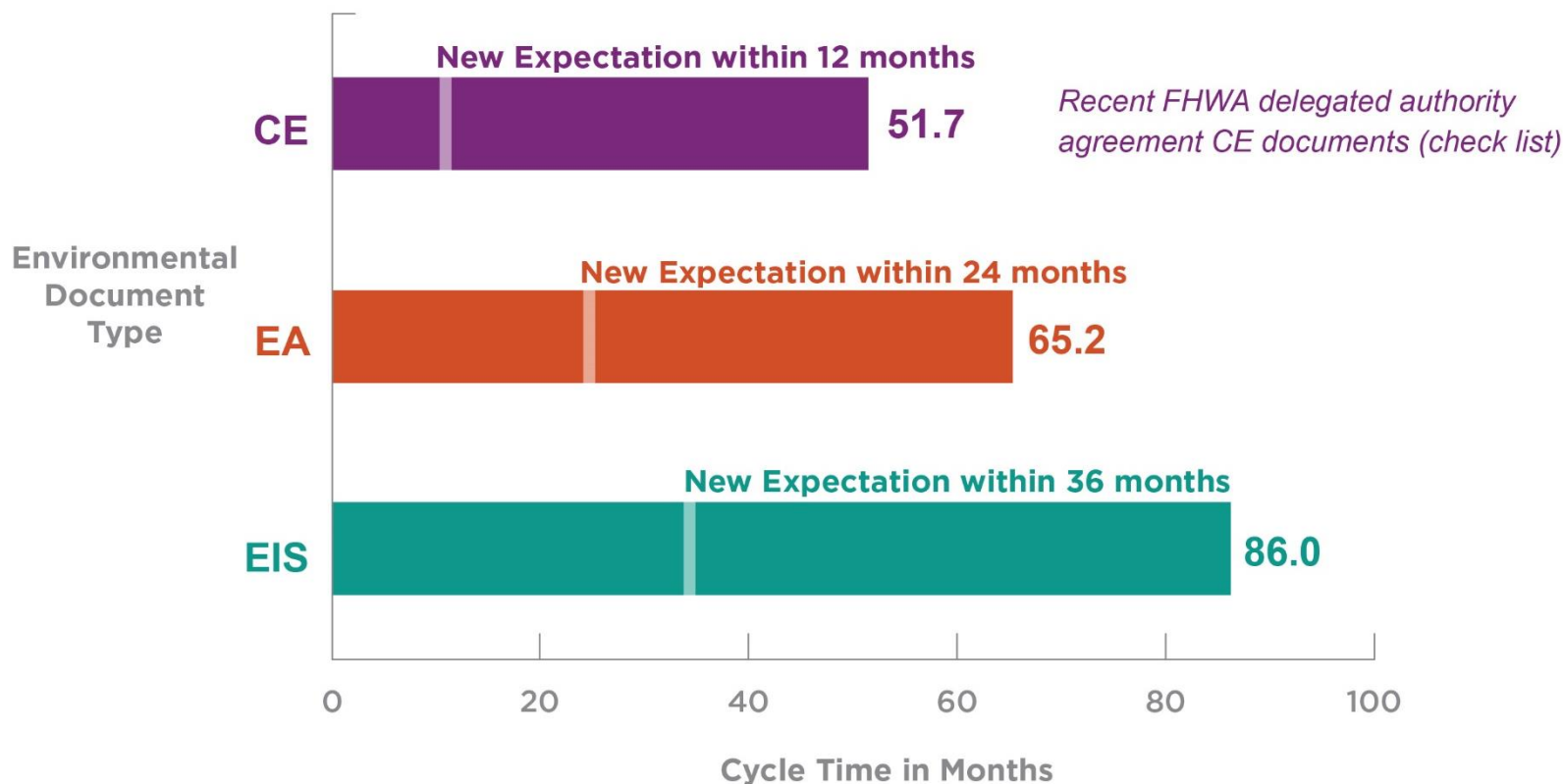


Roles and Responsibilities

- Maintain procedures, processes, and planning document templates
- Coordinate training for NEPA/SEPA and new processes

Environmental Documentation

12-24-36

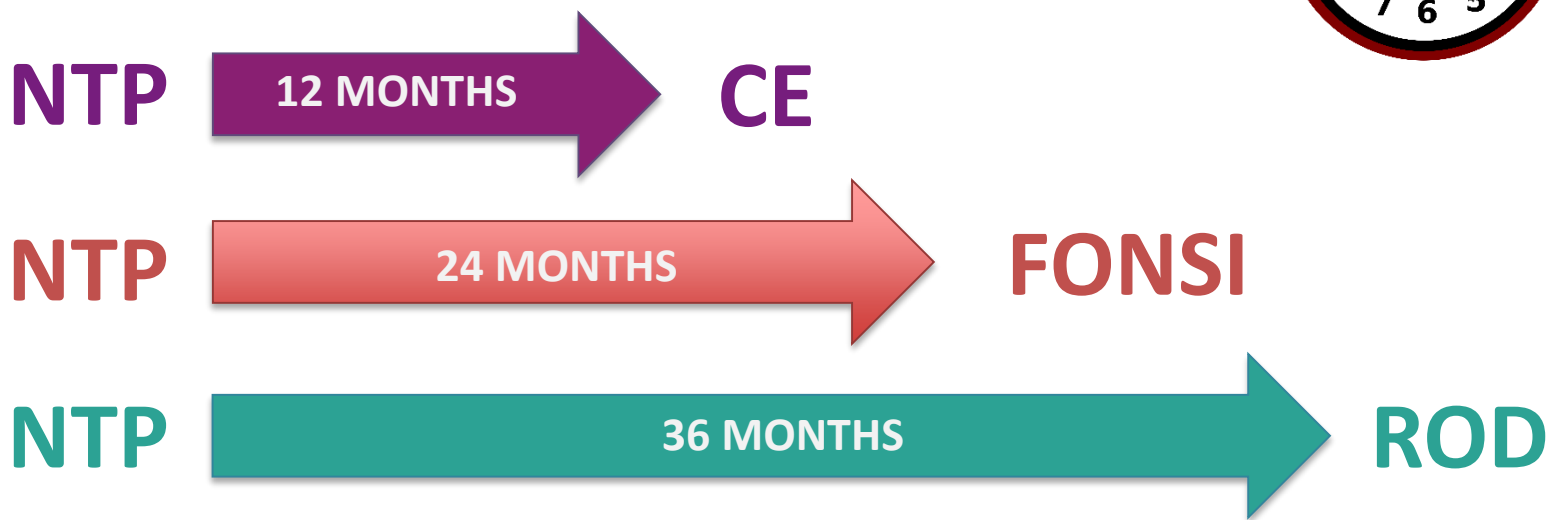
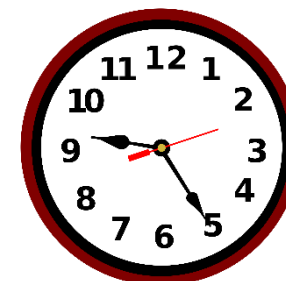


(CE) *Categorical exclusion*
 (EA) *Environmental assessments*
 (EIS) *Environmental impact statement*

Environmental Documentation

12-24-36

When does the clock start?



NTP IN 30 DAYS

(CE) Categorical exclusion
(EA) Environmental assessments
(EIS) Environmental impact statement

Environmental Documentation

12–24–36

Is This Timeframe Reasonable?

YES

Many projects meet these goals.

Will All Projects Meet This Timeframe?

NO

*Some may require more time,
but many may require less time.*

Environmental Documentation

12–24–36

It's the GOAL...



- Based on average duration of document delivery of all projects
- Requires being proactive and purposeful

Environmental Documentation

12–24–36

- Assume 12–24–36 is schedule at NTP
- During project development some unforeseen issues may arise
- As issues arise, explore options/solution that can hold the project schedule
- **Only as last resort**, provide justification and request a schedule change

Environmental Documentation

12–24–36

Project Issues –

What Can I Do?

- Be creative
- Look for innovative solutions
- Be open to intelligent risk taking



Biological Surveys Group
Marissa Cox
919-707-6153

- Section 7 Consultations
- Mussel Surveys
- Bat Surveys
- Other Threatened & Endangered Species Survey
- SAV Analysis

Monitoring & Stewardship Group
Randy Griffin
919-707-6121

- Mitigation Design
- Mitigation Monitoring
- Construction Oversight
- Mitigation Stewardship
- EAU Consultant Pre-Qualification Coordination

PICSViz Group
Jamilie Robbins
919-707-6085

- Public Involvement (Workshops & Public Hearings)
- Community (ICE) Studies
- NCDOT Visualization Capabilities
- Community Impact Assessments (CIA's)

EAU

NCDOT-Environmental Analysis Unit
Phil Harris, PE
919-707-6123

- Central & Division Support
- Programmatic Resolutions
- Multi Agency Coordination
- Environmental Research & Training

Traffic Noise/Air Quality & Cultural Resources Group
Missy Pair, PE
919-707-6064

- Traffic Noise Studies
- Air Quality Analysis
- Historic Architecture
- Archaeology
- Section 106 Consultations

Environmental Coordination and Permitting Group
Colin Mellor
919-707-6139

- Environmental Permitting
- Natural Resources Investigations
- Design-Build Coordination
- Bridge Program Planning Support

Mitigation & Modeling Group
LeiLani Paugh
919-707-6146

- Mitigation Feasibility, Planning & Tracking (Geodatabase)
- Mitigation Bank Credit Procurement
- NCDEQ-DMS Coordination
- Modeling (ATLAS)
- ICI Water Quality Analysis

Environmental Policy Unit

Next Steps

Resource Center

- Laws and Regulations
- Procedures
- FAQ's

Customer Service

- Provide Guidance
- Proactive Approach

Process Improvement

- Innovative Solutions
- Scoping Needs
- Document Templates

Training

- State Funded Doc's
- Section 106
- Hot Topics