

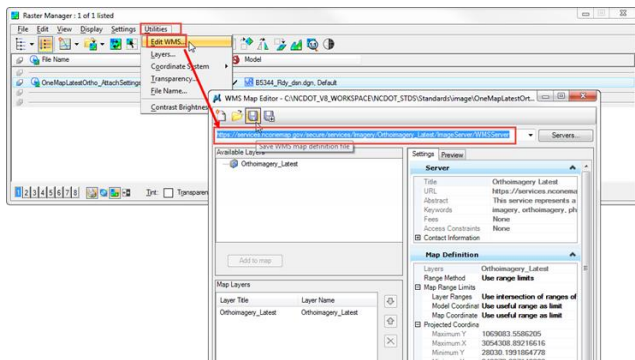
If you are having problems with NC OneMap, see important changes to the URL in the below link for attaching the latest NC OneMap imagery to a more secured HTTPS protocol, effective Friday, January 6, 2017.

<http://nconemap.gov/NCOneMapBlog/tabid/679/EntryId/1057/URLs-Changing-for-Several-NC-OneMap-services.aspx>

The WMS map definition file (.xwms) has been updated in the NCDOT workspace (not Roadway's).

```
<BentleyWMSFile>
  <VERSION>1.3.0</VERSION>
  <DCR:EXTENSION>services.nconemap.gov</DCR:EXTENSION>
  <REQUESTS>
  <VERSION>1.1.1.4</VERSION>
  <SRID>EPSG:2284</SRID>
  <LAYERS>OrthoImagery_Latest</LAYERS>
  <STYLES />
  <FORMAT>image/jpeg</FORMAT>
  <TRANSPARENT>FALSE</TRANSPARENT>
</REQUEST>
```

For those who have already attached the NC OneMap image under the old unsecured URL, and without having to detach, re-attach, and possibly re-clip the raster images, you should be able to manually change the URL under the Microstation Raster Manager dialog box.



For those who are using the Mr. Sid raster files (via Attach State Raster Tiles) as the background image, they will remain on a secured server in Photogrammetry, dot\dfsroot01\groups-phcc... Note that these SID files are not on a web map server (WMS) and only available to internal NCDOT personnel with an active directory (AD) account.

