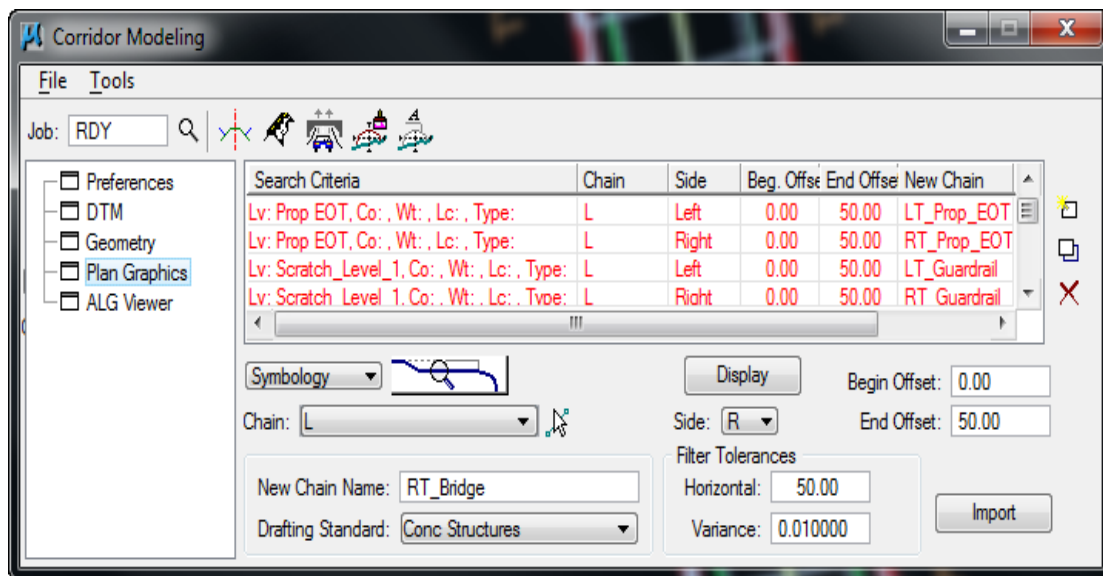
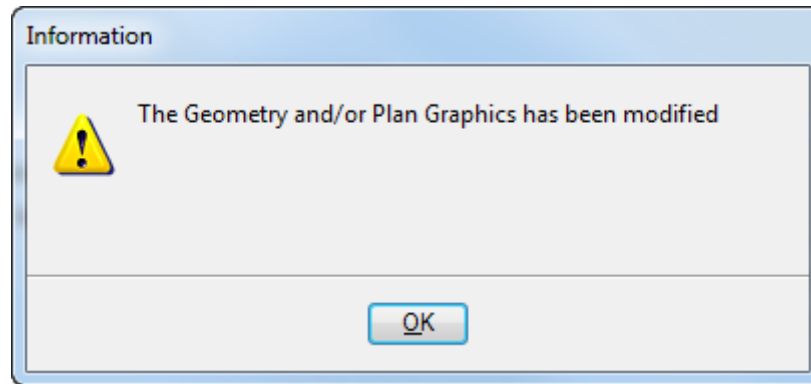


1_2 UNDERSTANDING/EDITING THE PLAN GRAPHICS.TXT FILE

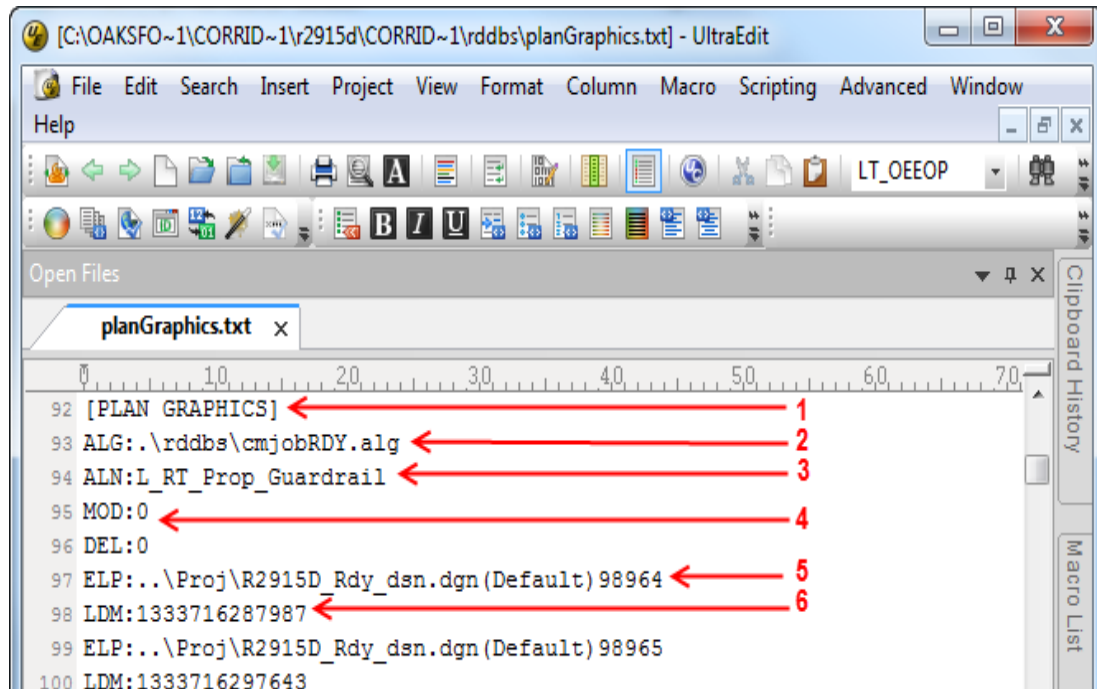
Question:

After launching Corridor Modeling I get a warning message stating my geometry/graphics has been modified and all of the graphics turn red and/or blue. The files are from an external office which are not mapped as "R:" drive. What is causing this issue and do I have to start-over and re-import all these graphics again?



Answer:

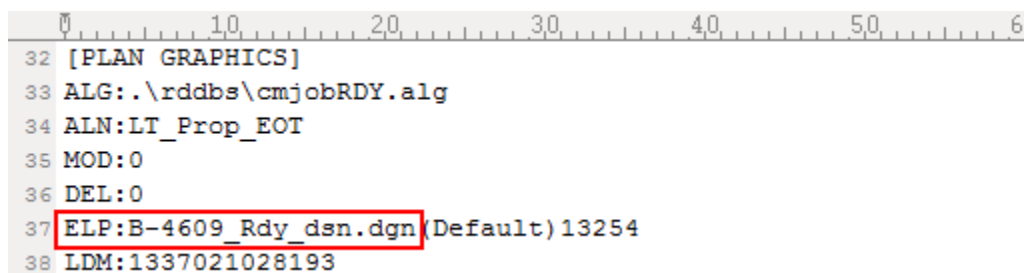
You do not have to start over and re-import the graphics. The key is to understand how the "planGraphics.txt" file works and how to edit it. Note that the following procedure only works for previously successful imported graphics. If the graphics were never stored successfully, then this procedure will not work. Below is a breakdown of a typical "planGraphics.txt" file which should be created automatically in the "\CorridorModeling\rddbs\" folder when the graphics were first imported.



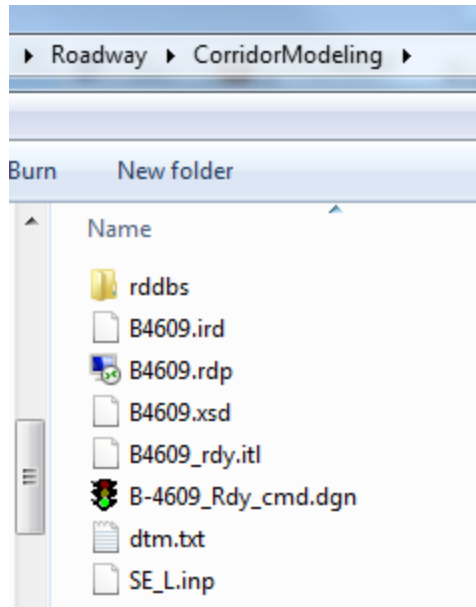
1. Header (for each plan graphics alignment name)
2. ALG File Location (GPK to ALG Conversion)
3. Import Graphics ALN Name
4. Graphics Mod/Del Flag
5. Element Properties [Relative Path & DGN File (MS Model Name) Element ID #]
6. Location Data Manager Number

Corridor Modeler loads the "planGraphics.txt" during the initial launch. Here are some possible reasons why the graphics will not load correctly.

7. Usually CM is launched from a DGN file(s) in the "\CorridorModeling\" folder, but the active DGN file or the referenced DGN file where the graphics were store do not exist. The planGraphics.txt file below searches for the "LT_Prop_EOT" graphics in the file "B-4609_Rdy_dsn.dgn" in the active "CorridorModeling\" folder.

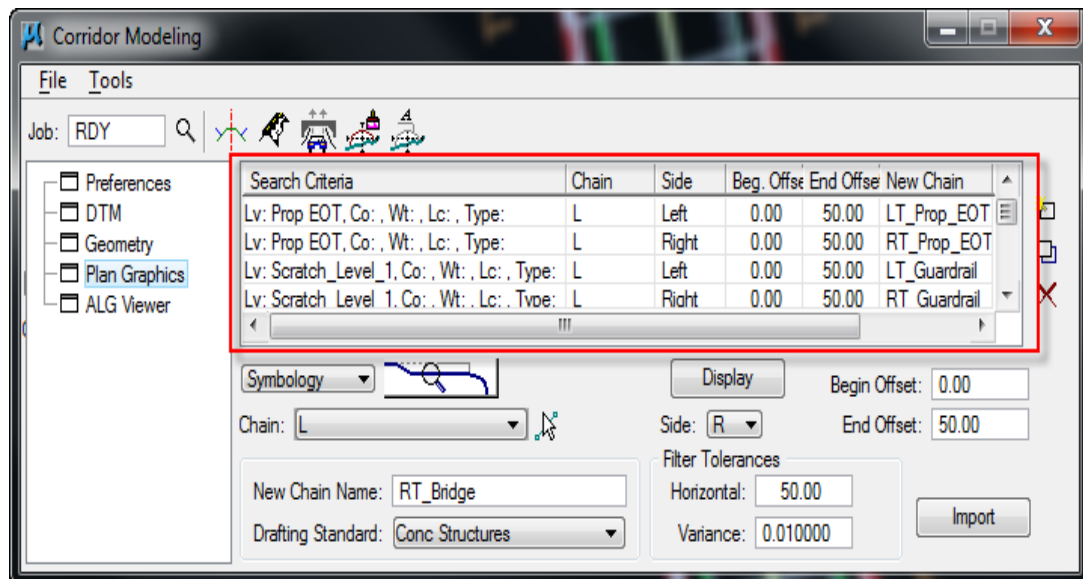
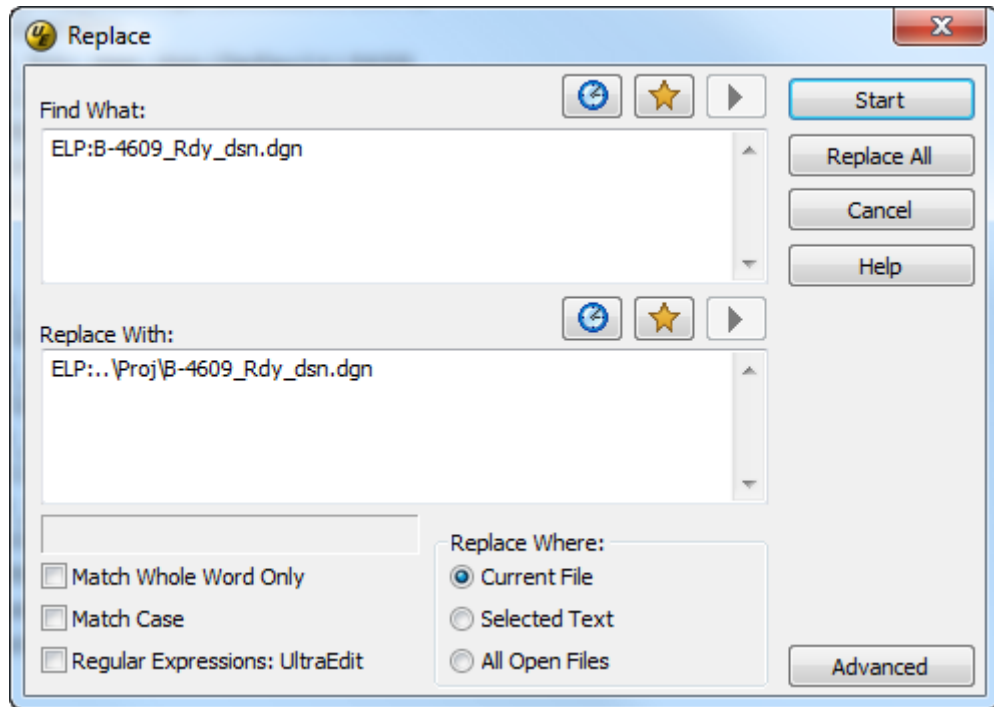


... but it does not exist.



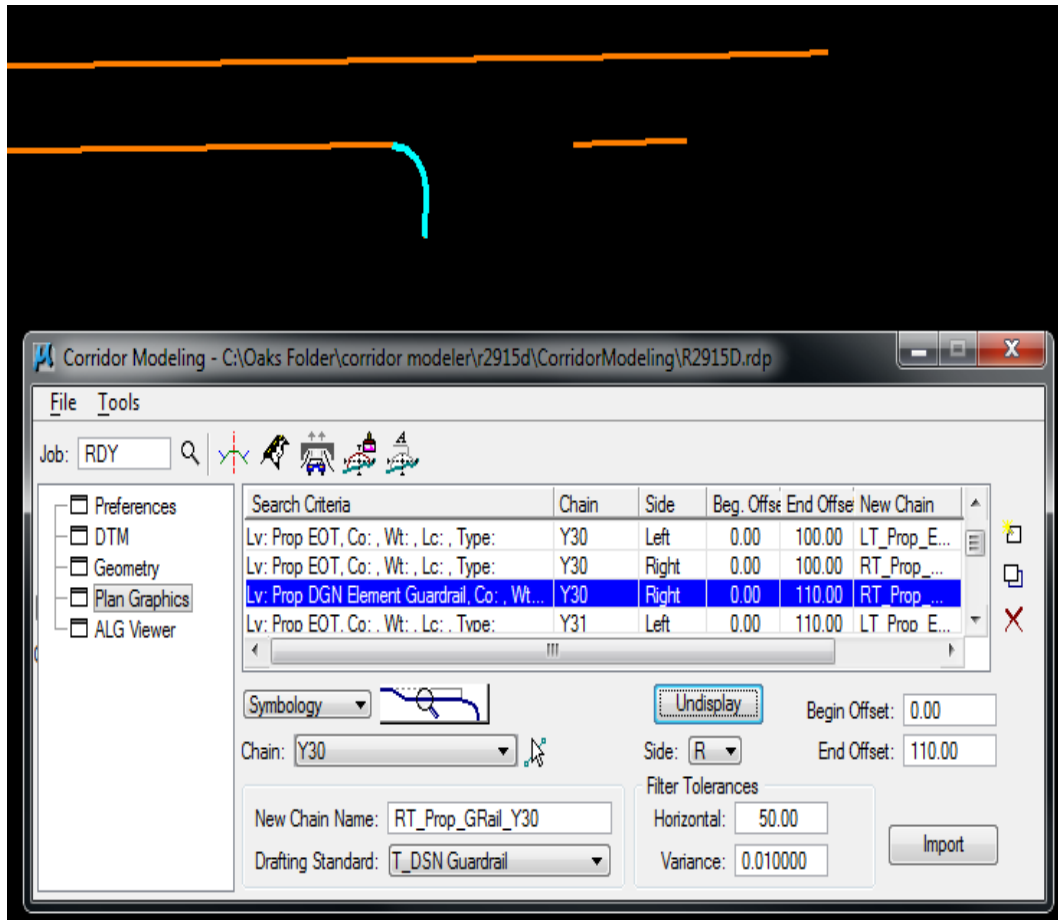
Chances are the DSN file was once temporary copied to the “\CorridorModeling\” folder from the “\Proj\” folder and plan graphics were stored there. The “planGraphics.txt” file was then generated in the “\CorridorModeling\rddbbs\” folder. The DSN file was then possibly deleted from the “\CorridorModeling\” folder afterward.

The Fix – If the file “B-4609_Rdy_dsn.dgn” still exists in the “\Proj\” folder, then in UltraEdit do a “Search and Replace” of all instances of “ELP:B-4609_Rdy_dsn.dgn” with “ELP:..\Proj\B-4609_Rdy_dsn.dgn”. Note “..” means go back one folder. From the active “\CorridorModeling\” folder, the path translates to “\Roadway\Proj\B-4609_Rdy_dsn.dgn”. Also note that it is not recommended to have a hyphen (-) in the TIP file name when created with the Design File Generator.



The true fix should have been referencing the "B-4609_Rdy_dsn.dgn" file in the "\Proj\" folder from the CMD 2D or 3D DGN file in the "\CorridorModeling\" folder.

- The stored graphics have been deleted, modified, or no longer is valid. Below three elements were stored as the "RT_Prop_Grail_Y30" graphics.

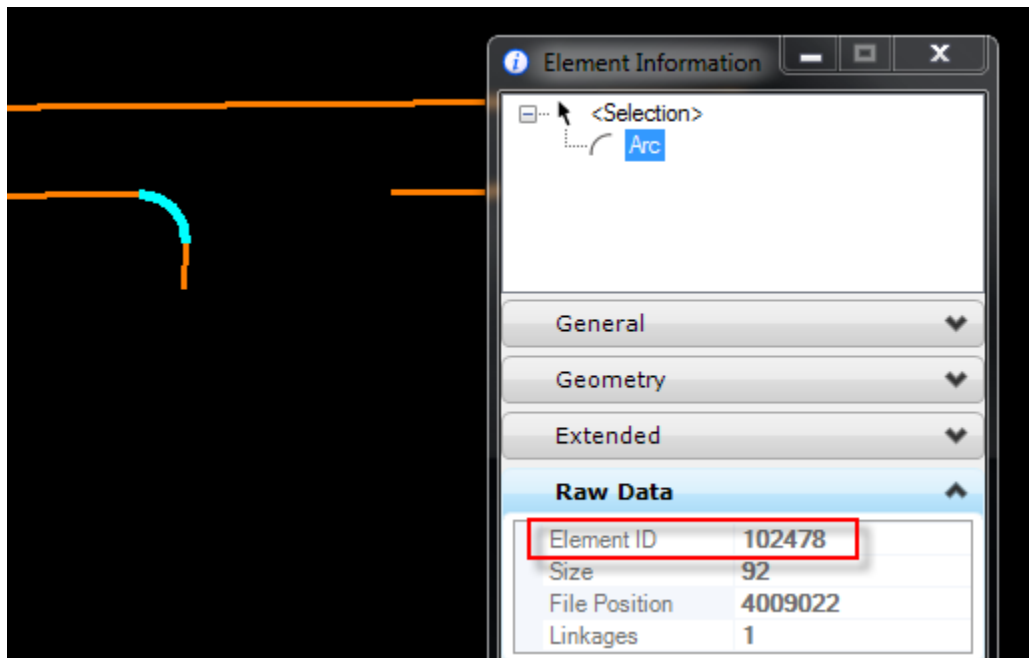
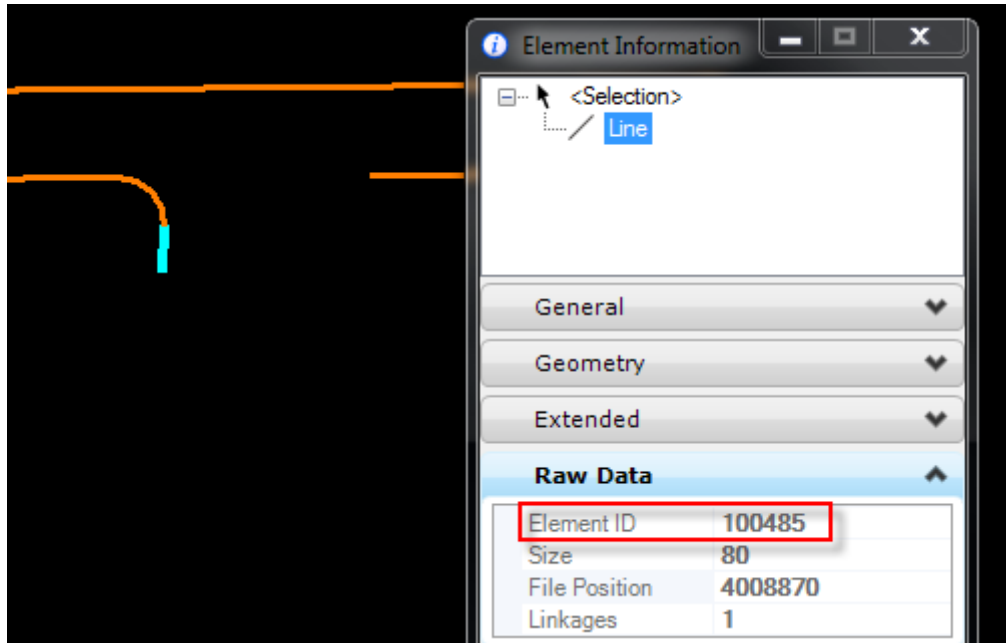


```

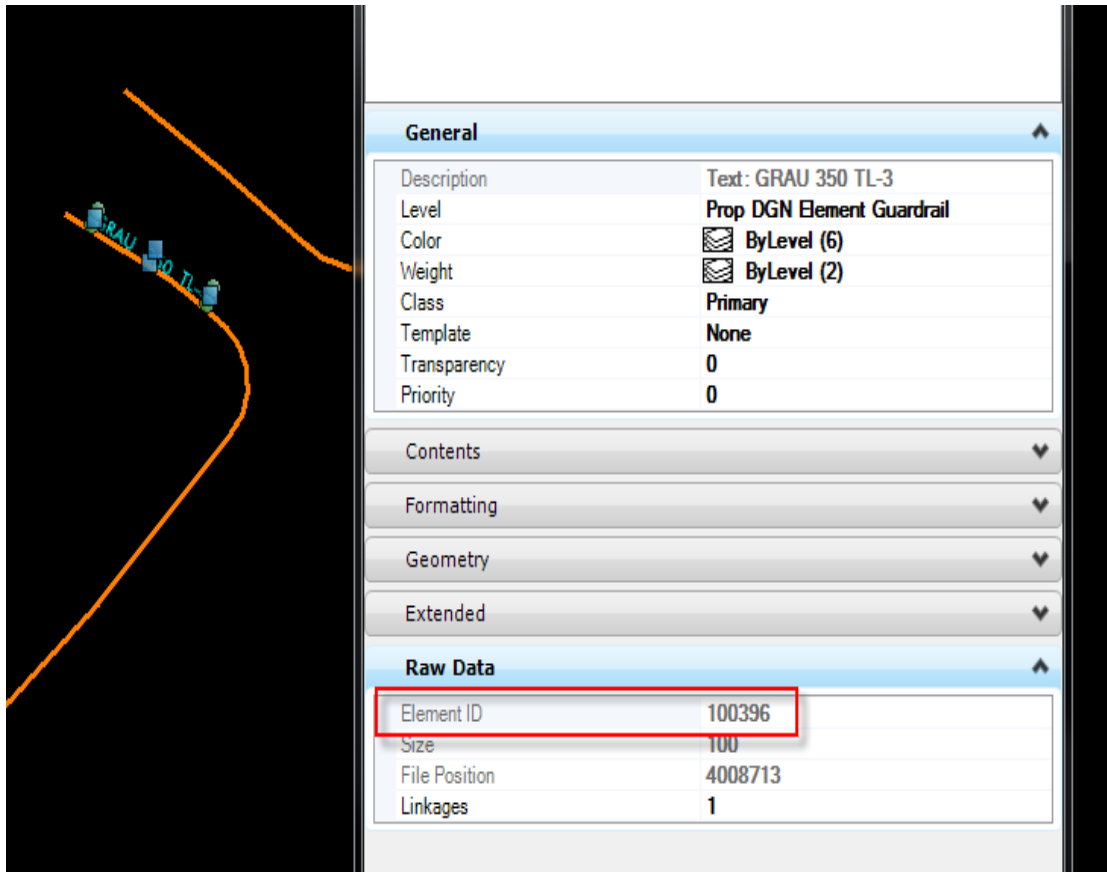
805 [PLAN GRAPHICS]
806 ALG:.\rddb\cmjobRDY.alg
807 ALN:RT_Prop_GRail_Y30
808 MOD:0
809 DEL:0
810 ELP:..\Proj\R2915D_Rdy_dsn.dgn (Default) 100396
811 LDM:1333547756731
812 ELP:..\Proj\R2915D_Rdy_dsn.dgn (Default) 100485
813 LDM:1333717371009
814 ELP:..\Proj\R2915D_Rdy_dsn.dgn (Default) 102478
815 LDM:1333717351932
816 [PLAN GRAPHICS]

```

The last two elements in the planGraphics.txt file can be can be matched and located with their Element ID number using Element Information.



To locate the missing element, go to the DSN file and key-in "ELEMENT INFO BYELEMID 100396".



Note that this is a text element located about 14,300' away from the other two guardrail elements. For future reference, please toggle the element type in the search criteria to include just line and arc type elements for guardrail graphics (excluding text).

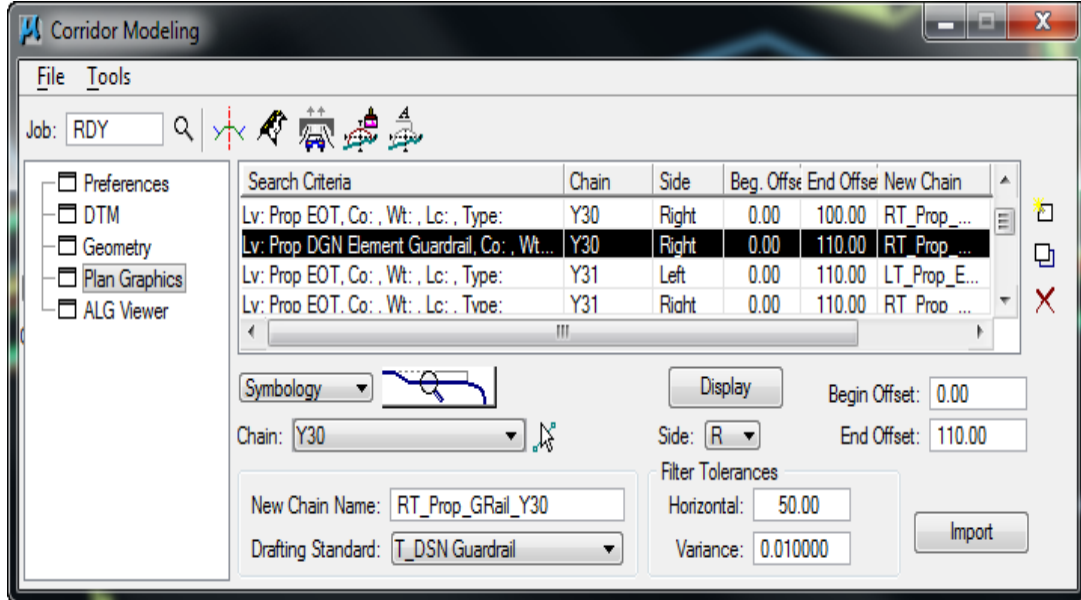
Chances are this text element was stored with other guardrail graphics by mistake. The text is then moved to its current location. It is now out of range for the search criteria to work properly.

The Fix – Delete the element from the planGraphics.txt file and reload Corridor Modeling.

```

planGraphics.txt x
0 1.0 2.0 3.0 4.0 5.0
805 [PLAN GRAPHICS]
806 ALG:.\rddb\cmjobRDY.alg
807 ALN:RT_Prop_GRail_Y30
808 MOD:0
809 DEL:0
810 ELP:.\Proj\R2915D_Rdy_dsn.dgn(Default)100485
811 LDM:1333717371009
812 ELP:.\Proj\R2915D_Rdy_dsn.dgn(Default)102478
813 LDM:1333717351932
814 [PLAN GRAPHICS]

```

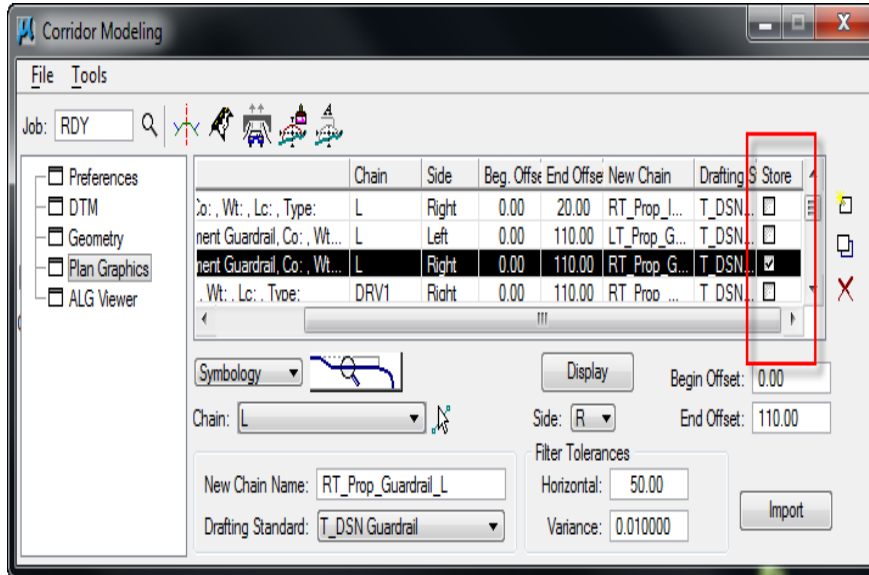


- Sometime the graphics were moved sincethey were last imported. A difference in the Location Data Manager (LDM) number of the same element ID is an indication this has occurred.

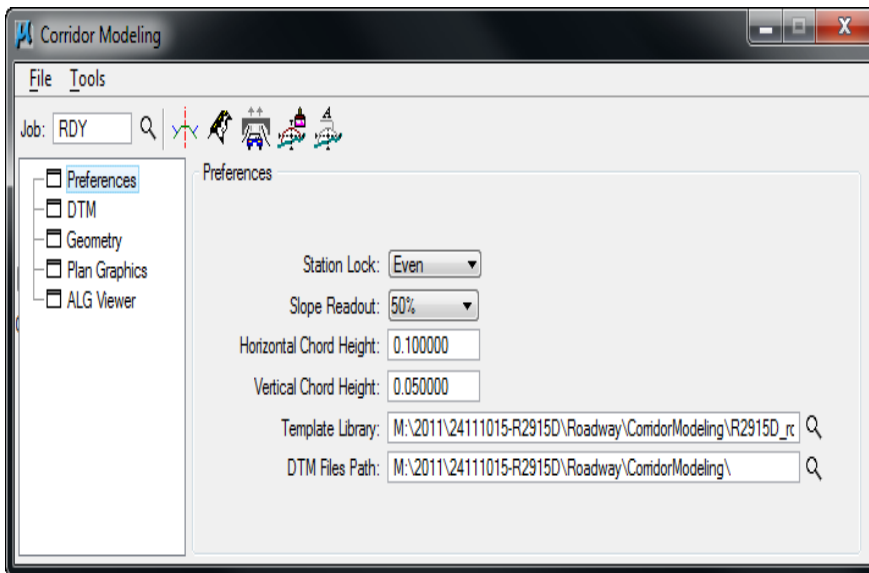
570 LDM:1333717623667	2332 ALN:RT_Prop_Guardrail_L
571 ELP:.. \Proj\R2915D_Rdy_dsn.dgn (Default) 99340	2333 MOD:0
572 LDM:1333717618982	2334 DEL:0
573 ELP:.. \Proj\R2915D_Rdy_dsn.dgn (Default) 99342	2335 ELP:.. \Proj\R2915D_Rdy_dsn.dgn (Default) 102478
574 LDM:1333717634260	2336 LDM:1333717351932
575 ELP:.. \Proj\R2915D_Rdy_dsn.dgn (Default) 99343	2337 ELP:.. \Proj\R2915D_Rdy_dsn.dgn (Default) 102473
576 LDM:1333717640172	2338 LDM:1333716251431
577 ELP:.. \Proj\R2915D_Rdy_dsn.dgn (Default) 99341	2339 ELP:.. \Proj\R2915D_Rdy_dsn.dgn (Default) 102470
578 LDM:1333717657693	2340 LDM:1333716156429
579 ELP:.. \Proj\R2915D_Rdy_dsn.dgn (Default) 99344	2341 ELP:.. \Proj\R2915D_Rdy_dsn.dgn (Default) 102467
580 LDM:1333717662885	2342 LDM:1333716018185
581 ELP:.. \Proj\R2915D_Rdy_dsn.dgn (Default) 100396	2343 ELP:.. \Proj\R2915D_Rdy_dsn.dgn (Default) 100396
582 LDM:1333547756731	2344 LDM:1334605282265
583 ELP:.. \Proj\R2915D_Rdy_dsn.dgn (Default) 102467	2345 ELP:.. \Proj\R2915D_Rdy_dsn.dgn (Default) 99344
584 LDM:1333716018185	2346 LDM:1333717662885
585 ELP:.. \Proj\R2915D_Rdy_dsn.dgn (Default) 102470	2347 ELP:.. \Proj\R2915D_Rdy_dsn.dgn (Default) 99341
586 LDM:1333716156429	2348 LDM:1333717657693
587 ELP:.. \Proj\R2915D_Rdy_dsn.dgn (Default) 102473	2349 ELP:.. \Proj\R2915D_Rdy_dsn.dgn (Default) 99343
588 LDM:1333716251431	2350 LDM:1333717640172
589 ELP:.. \Proj\R2915D_Rdy_dsn.dgn (Default) 102478	2351 ELP:.. \Proj\R2915D_Rdy_dsn.dgn (Default) 99342

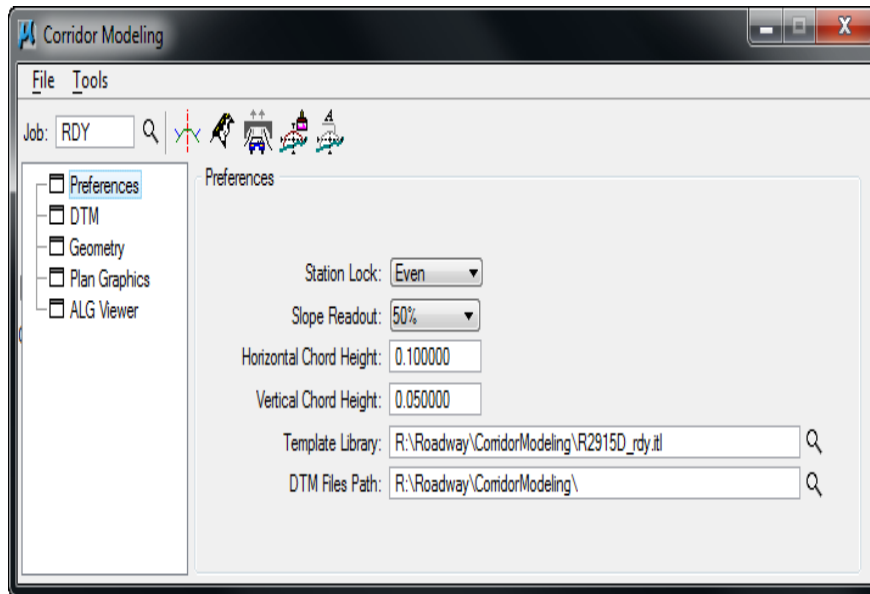
The Fix – Re-import just that item/row of that graphics. Note the import checkbox to the far right

of the dialog box. You do not have to re-import all of the graphics over again if they have been successfully stored previously.

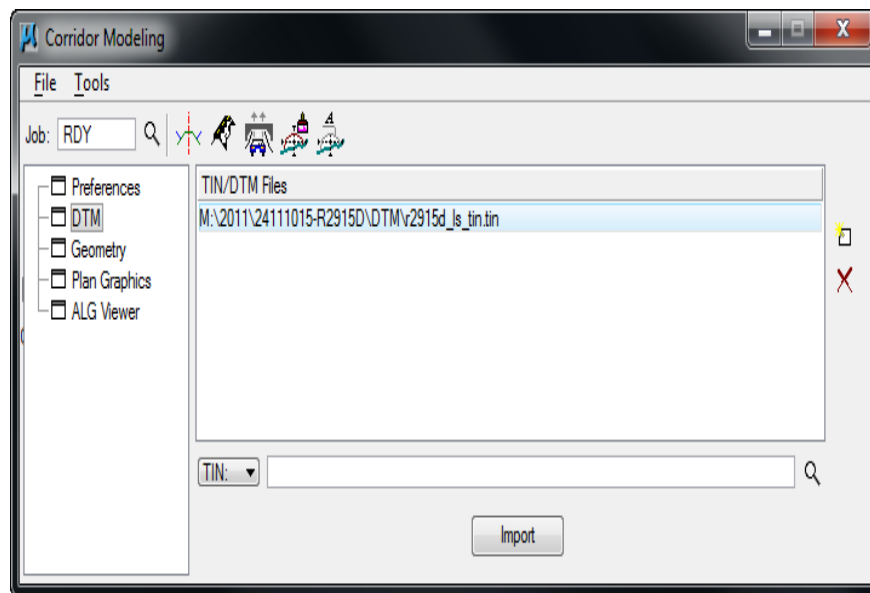


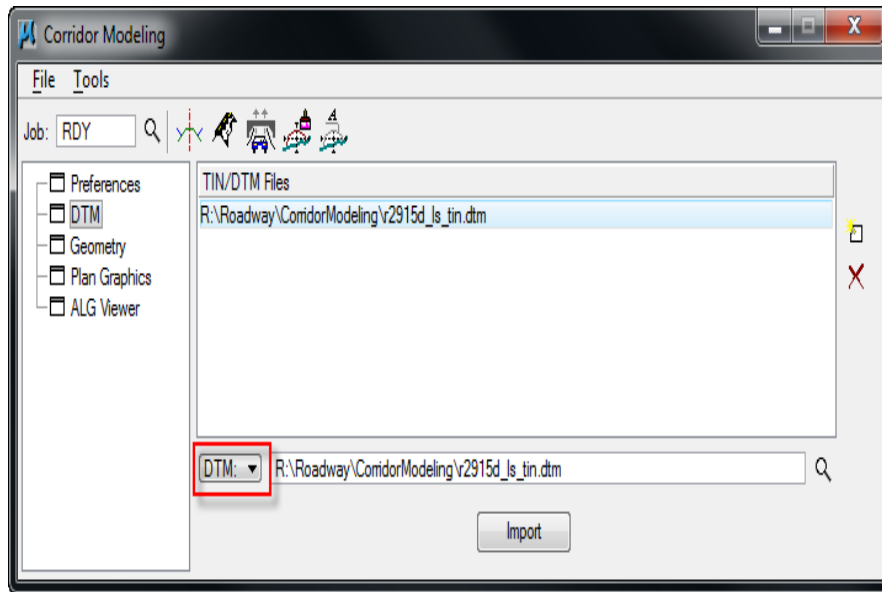
For projects that were not mapped as R drive, load the RDP and GPK as is. Then change the Template Library and DTM Files Path to the "R:\Roadway\CorridorModeling\" folder.





For the DTM tab, delete the TIN file from the list and replace it with converted existing DTM. Note you do not have to re-import the file because it has already been converted to an existing inRoads DTM.





Resave the RDP and Corridor Modeling will work off the R:\ drive from this moment on. As mentioned in the last Cadd User Group Meeting, please try not to create the "rddb" folder outside the "\CorridorModeling\" folder. The alignment and graphics links to this folder are unpredictable by doing so. Delete any unintentionally created "rddb" folders outside the "\CorridorModeling\" folder.