

1_7 CANNOT LOAD - LANDXML ERROR MESSAGE

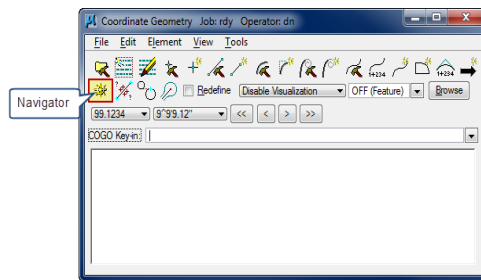
Question:

When trying to open Corridor Modeling Dialog I get error messages such as "Cannot load LandXML" or "Cannot create file chain and profile in LandXML format"?

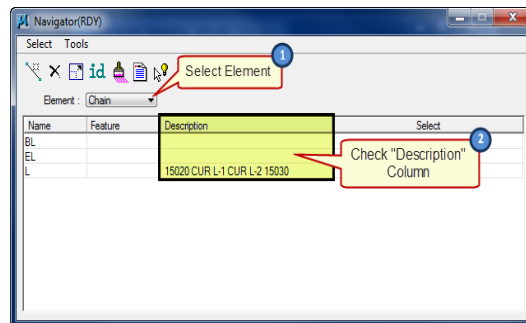
Answer:

Sometimes during the Corridor Modeling GPK to ALG conversion the GPK can get corrupt. When this happens the XML file (rddb's folder) also becomes corrupt. However this is something that can easily be fixed.

- In Geopak open and take a look at your GPK. Use "Navigator" (see below) to look over Chains, points, etc.



- Select each item under "Element" dropdown list, focusing on the "Description" column.



- Scan each "Description" column looking for something that looks like "\$&(\$&€#%*". This will be the part that is corrupt.

- Delete all of these type of entries (leaving it blank). When done close out of GPK (it should prompt you that it had updated your GPK).

- Close out of Microstation.

- Now go to the "rddb's" folder under "CorridorModeling". Delete your ALG & XML files (these will be re-created when importing new GPK).

- Open your corridor modeling file and repeat the setting up Corridor Modeling Preferences process. You now should be able to open Corridor Modeling or import your GPK.