

Applying End Condition Exceptions

Introduction:

End condition exceptions are useful for modifying the template end conditions without the need to drop another template. It should be used in a range of similar EC branches or type, e.g. end condition for normal shoulder, widened shoulder for GR warrant, GR seek, Shoulder Berm Gutter.

Objective:

Create an instance of end condition exception to the right side slope from station 21+00 to 22+00. Change the default 2:1 slope to 3:1. Note that the end condition range has a consistent guardrail graphics with widened shoulder throughout.

Exercise: Apply End Condition Exception

Step 1.

While in the file **r2635c_rdy_dsn.dgn**, launch the Geopak Corridor Modeling tool.

Step 2.

Load the file **r2635c_y15_ece.rdp** preference file.

Step 3.

Load the **jobrdy.gpk** file.

Step 4.

Launch **Roadway Designer**.

Step 5.

In Roadway Designer, load the **y15.ird** file.

Step 6.

Navigate to station 21+00.

- **NOTE:** Applying end condition exception from 21+00 to 22+00 right side.

Step 7.

Activate the end condition exceptions dialog box (4th tool box or **Corridor, End Condition Exceptions**).



Step 8.

Fill out the **End Condition Exception** dialog box with the following settings.

- **NOTE:** Optional: Key-in task objectives in the "Description" field.

End Condition Exceptions

Corridor: Y15

Description: Fixed 3:1 Side Slope RT

Station Range
Start: 21+00.00
Stop: 22+00.00

Apply To
☐ Left Override
☒ Right Override
☐ Left Transition
☐ Right Transition

☐ Backbone Only

End Condition Exceptions:

| Enabled | Start Station | Stop Station | Type | Description |
|---------|---------------|--------------|----------------|--------------------|
| X | 21+00.00 | 22+00.00 | Right Override | Fixed 3:1 Side ... |

Buttons: Add, Close, Change, Help, Edit..., Delete

Start: **21+00**
 Stop: **22+00**
 Right Override: on
 Action: **Add**

Step 9.

With the end condition exception line item selected (highlighted in blue) in the list, click **Edit**.

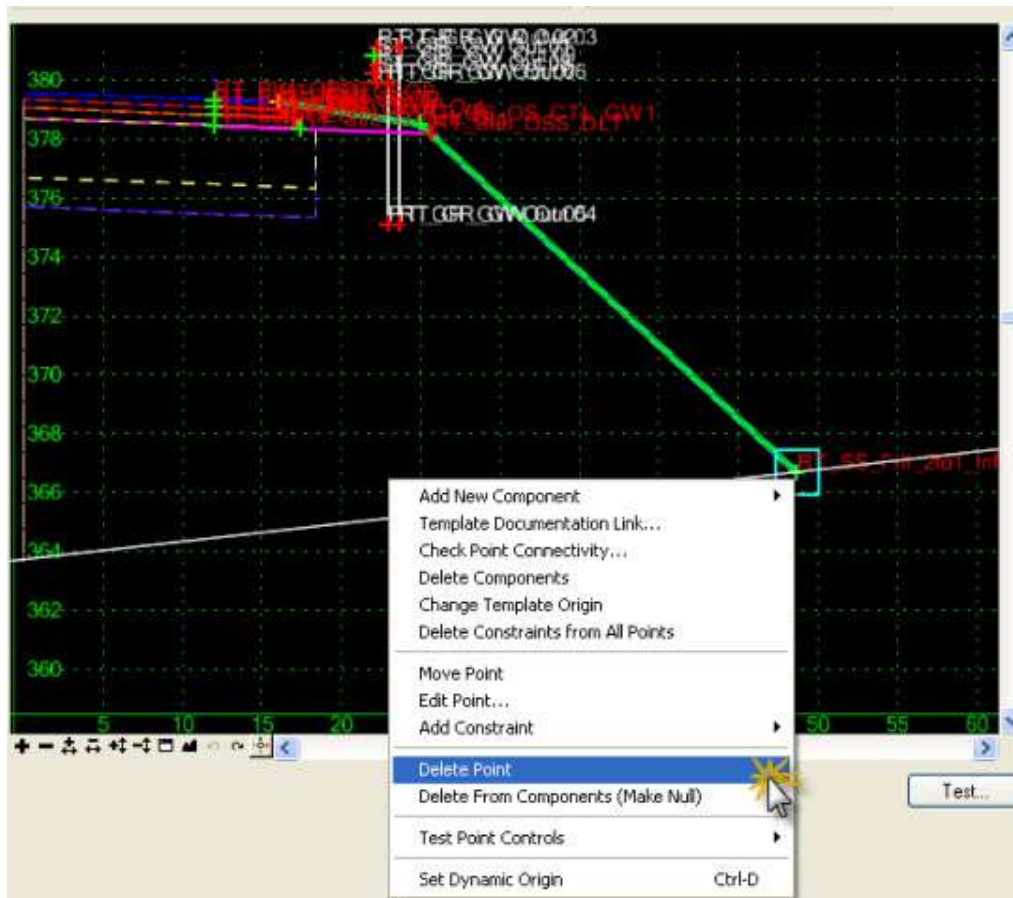
End Condition Exceptions:

| Enabled | Start Station | Stop Station | Type | Description |
|---------|---------------|--------------|----------------|--------------------|
| X | 21+00.00 | 22+00.00 | Right Override | Fixed 3:1 Side ... |

Buttons: Edit..., Delete

Step 10.

Once the side Override dialog appears, go to the template container and select the slope stake point. Right mouse click and from the menu select **Delete Point**.



- **NOTE:** A simple "Delete Components" will not work since the side slope end condition branches off from the EOP and all points from the EOP will be deleted at once.

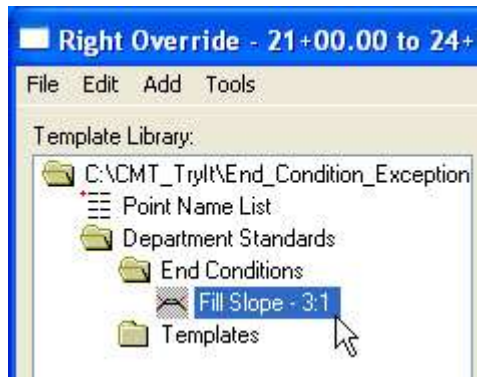


Step 11.

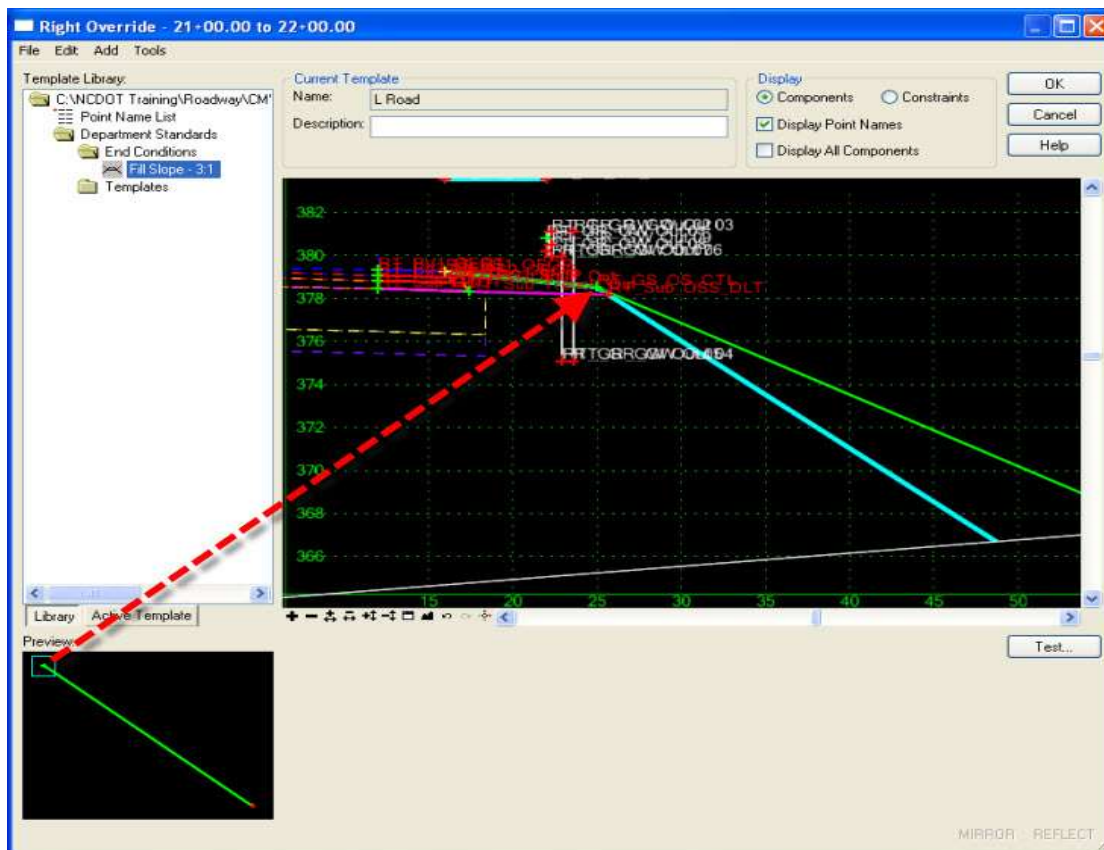
Turn on "[Apply Affixes](#)".

Step 12.

Locate and highlight the end condition **Fill Slope - 3:1** under the **End Conditions** folder. Do not activate this template by double clicking on it.

**Step 13.**

In the Preview window drag and drop the end condition **Fill Slope - 3:1** into the active template. Use the insertion point **RT_GS_OS_CTL** to overwrite the point with the same name.



Step 14.

Click **OK** to close the side Override dialog box and then click **Close** to close the End Condition Exceptions dialog box.

Step 15.

Lastly, verify the results and save the IRD file.



This page intentionally left blank.