

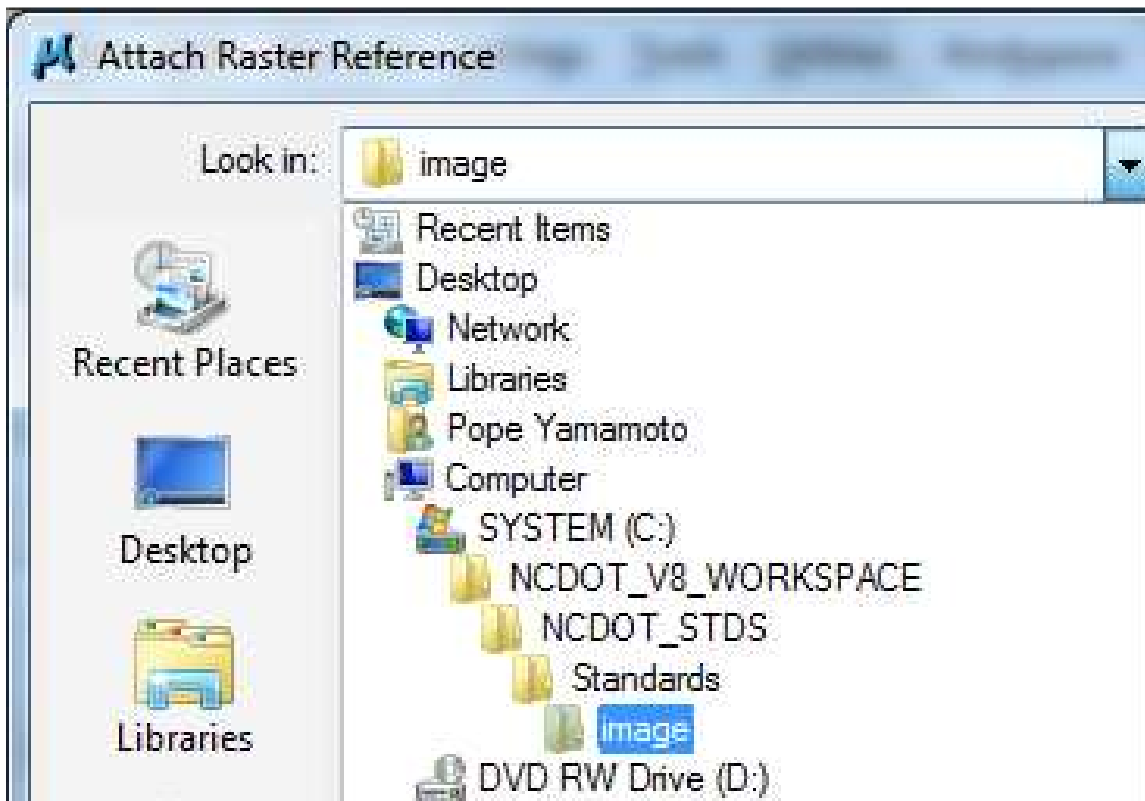
## How To: Attach Image from World Mapping Server (WMS)

Coordinately correct images from the World Mapping Server (WMS) can be attached to a design file using **Raster Manager**. The following instructions are for attaching 2010 orthographic aerial imagery of the entire state of North Carolina.

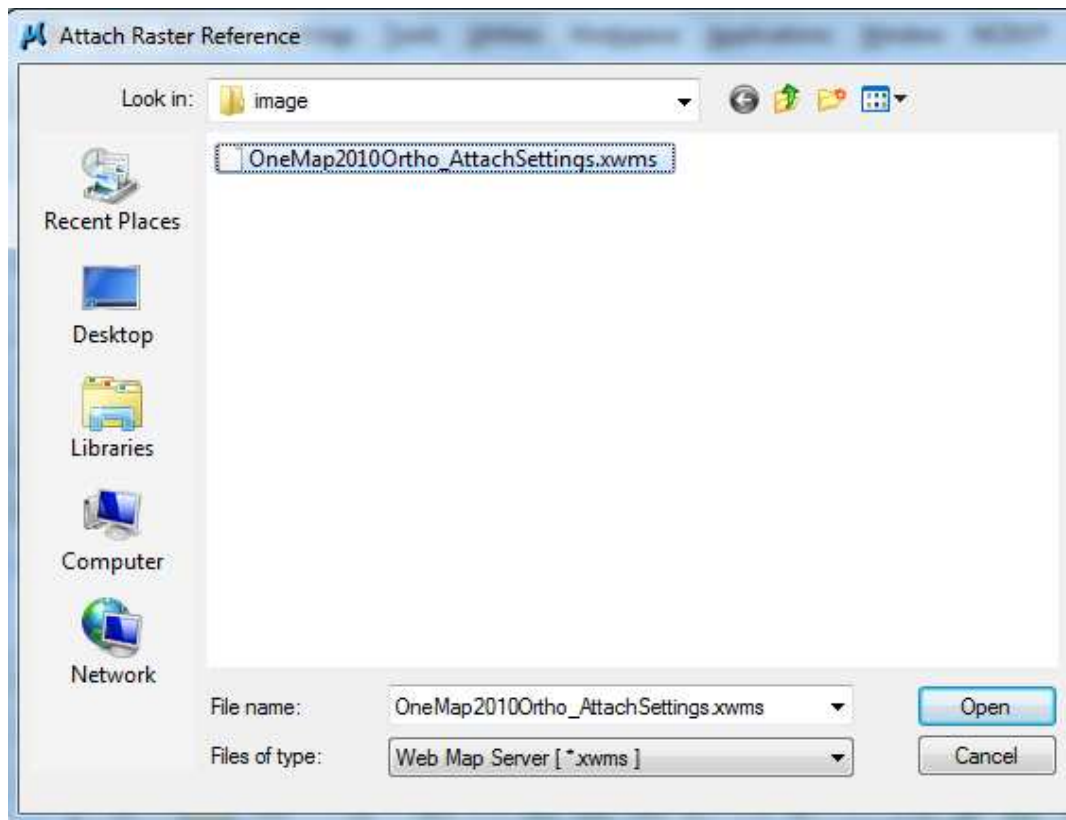
Open the desired MicroStation dgn file. Launch **Raster Manager** by selecting the commands **File > Raster Manager**. In the **Raster Manager** dialog box, select the commands **File > Attach > WMS**



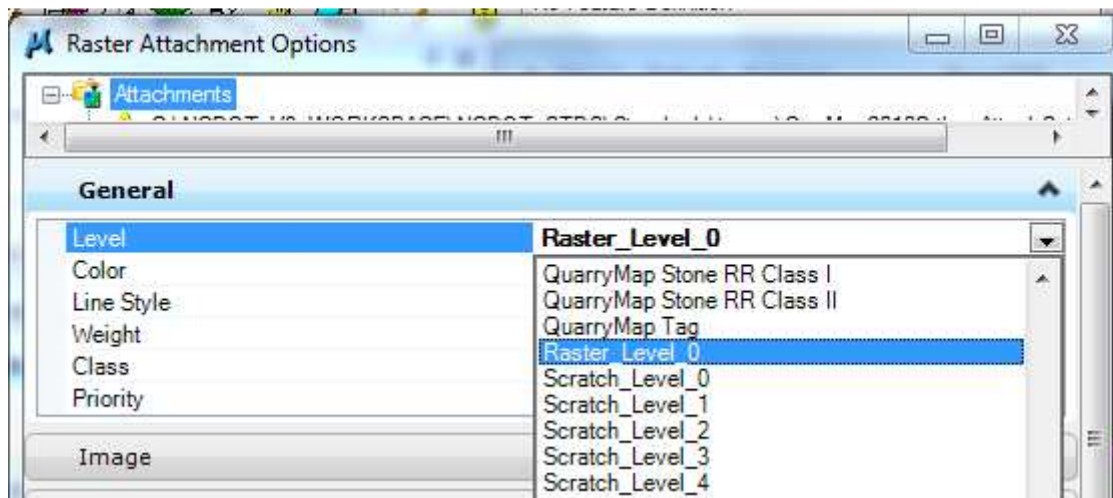
Follow this path:



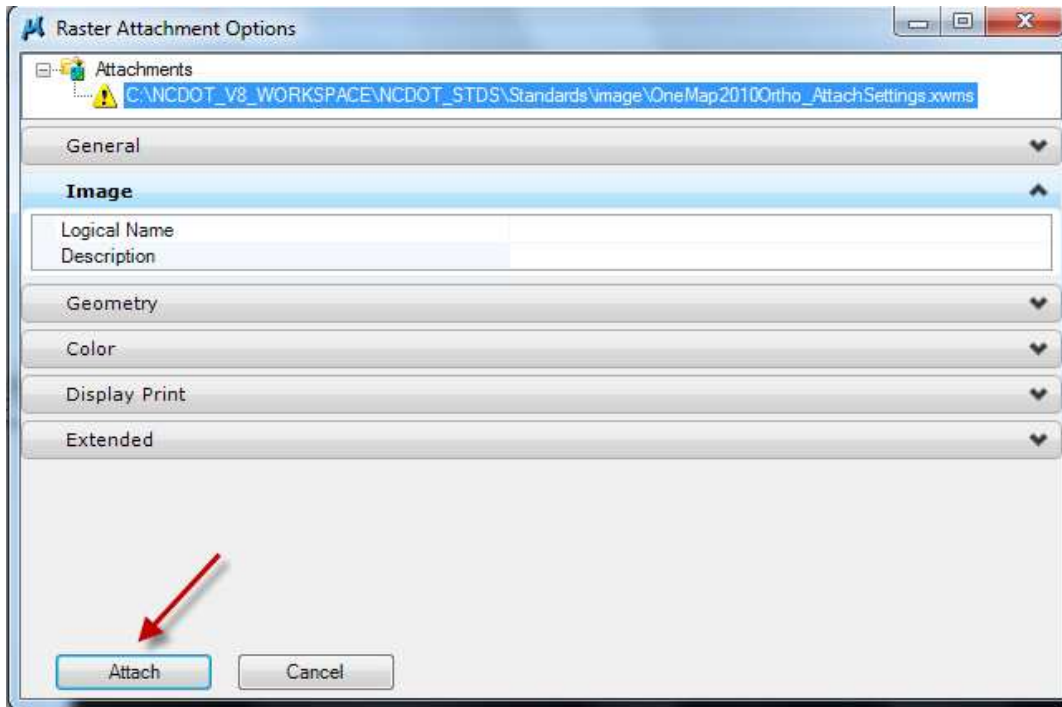
Open this file:



Be sure to set the level to Raster\_Level\_0



Then hit attach.



You may clip the attachment. In the **Raster Manager** dialog box, highlight the “**xwms**” file name. Select the commands **Edit > Clip**. Insure the settings in the **Tool Settings** dialog box are as shown here. Use two diagonally opposed **Data Points** to define the clip boundary.

