

STRUCTURE EXAMPLES

PAY RECORD BOOK ENTRY EXAMPLE

Line Code #268 Culvert Excavation - Sta. 284+63.29 - L-

LS @ \$15,000.00

12

Station	Loc.	Lt./Rt.	Complete	Total	Date	Initials	Remarks
336+85.45	-L Rev. -	Rt.	50%	\$7,500.00	2-23-98	LRY	Phase I
336+85.45	-L Rev. -	Rt.	50%	\$7,500.00	3-19-99	MKT	Phase II
		Page & Project	Total:	\$15,000.00	4-2-99	MKT	
<p>I certify that this item was completed 3-19-99 in accordance with the terms of the contract. Signed: <u>I. M. Resident, PE</u> Resident Engineer</p>							
							Checked By: MKF
							Date: 1-19-00

PAY RECORD BOOK ENTRY EXAMPLE

Line Code #270 Class A Concrete, Culvert

894.5 CM @ \$374.50

17

<i>Station</i>	<i>Loc.</i>	<i>Lt./Rt.</i>	<i>Size</i>	<i>CM</i>	<i>Date</i>	<i>Initials</i>	<i>Remarks</i>
<i>183+55.72</i>	<i>-LRev. -</i>	<i>Lt./Rt.</i>	<i>2-8x8</i>	<i>105.7</i>	<i>2-13-98</i>	<i>MK7</i>	<i>Floor Slab - Plan Quantity</i>
<i>183+55.72</i>	<i>-LRev. -</i>	<i>Lt./Rt.</i>	<i>2-8x8</i>	<i>88.6</i>	<i>2-22-98</i>	<i>MK7</i>	<i>Center Vertical Wall - Plan Quantity</i>
<i>183+55.72</i>	<i>-LRev. -</i>	<i>Lt./Rt.</i>	<i>2-8x8</i>	<i>235.6</i>	<i>2-23-98</i>	<i>MK7</i>	<i>2 - Exterior Walls - Plan Quantity</i>
<i>183+55.72</i>	<i>-LRev. -</i>	<i>Lt./Rt.</i>	<i>2-8x8</i>	<i>115.6</i>	<i>3-7-98</i>	<i>DDG</i>	<i>Roof Slab - Plan Quantity</i>
<i>183+55.72</i>	<i>-LRev. -</i>	<i>Lt.</i>	<i>2-8x8</i>	<i>25.4</i>	<i>3-10-98</i>	<i>DDG</i>	<i>Wing Walls - Plan Quantity</i>
<i>183+55.72</i>	<i>-LRev. -</i>	<i>Rt.</i>	<i>2-8x8</i>	<i>25.4</i>	<i>3-11-98</i>	<i>DDG</i>	<i>Wing Walls - Plan Quantity</i>
							<i>Culvert Concrete Complete 3-11-98</i>
				<i>Page</i>	<i>Total:</i>	<i>596.3</i>	<i>4-2-98</i>
							<i>Pd. Est #5 MK7</i>
							<i>Checked By: ML7</i>
							<i>Date: 6-19-99</i>

PAY RECORD BOOK ENTRY EXAMPLE

Line Code #276 Foundation Excavation for Bent No. 2 @ Sta. 341+34.54 -L- LS @ \$2,500.00 8

<i>Station</i>	<i>Loc.</i>	<i>Lt./Rt.</i>		<i>Complete</i>	<i>Amount</i>		<i>Date</i>	<i>Initials</i>	<i>Remarks</i>
<i>341+34.54</i>	<i>-L-</i>	<i>Lt.</i>		<i>60%</i>	<i>\$7,500.00</i>		<i>6-23-98</i>	<i>MKT</i>	<i>Note: Footing elevation was lowered 1.5' by K. J. Morris -</i>
<i>341+34.54</i>	<i>-L-</i>	<i>Lt.</i>		<i>40%</i>	<i>\$5,000.00</i>		<i>11-21-98</i>	<i>JFB</i>	<i>Bridge Construction Engineer</i>
									<i>No additional compensation per</i>
									<i>Section 410 of the Standard</i>
									<i>Specifications.</i>
		<i>Page &</i>	<i>Project</i>	<i>Total:</i>	<i>\$12,500.00</i>		<i>12-9-98</i>	<i>MKT</i>	

Note: Foundation Excavation can also be measured by Cross-section method. See Contract for proper payment method. See Unclassified Excavation or Borrow Excavation for examples of measurement and documentation.

*I certify that this item was completed
11-21-98 in accordance with the terms of the
contract.*

*Signed: J. M. Resident, PE
Resident Engineer*

*Checked By: MKT
Date: 7-8-99*

PAY RECORD BOOK ENTRY EXAMPLE

Line Code #285

Reinforced Concrete Deck Slab

27,660 SF @ \$14.24

52

<i>Structure</i>	<i>Span #</i>		<i>SF</i>		<i>Date</i>	<i>Initials</i>	<i>Remarks</i>
<i>23+56.23-L-</i>	<i>1</i>		<i>2,305.0</i>		<i>10-29-98</i>	<i>WLN</i>	<i>Per plans</i>
	<i>2</i>		<i>2,305.0</i>		<i>2-15-98</i>	<i>WLN</i>	
	<i>3</i>		<i>2,305.0</i>		<i>2-21-98</i>	<i>WLN</i>	
	<i>4</i>		<i>2,305.0</i>		<i>2-23-98</i>	<i>WLN</i>	
	<i>5</i>		<i>2,305.0</i>		<i>5-06-98</i>	<i>WLN</i>	
	<i>6</i>		<i>2,305.0</i>		<i>11-07-98</i>	<i>WLN</i>	
	<i>7</i>		<i>2,305.0</i>		<i>11-08-98</i>	<i>WLN</i>	
	<i>8</i>		<i>2,305.0</i>		<i>5-01-99</i>	<i>WLN</i>	
	<i>9</i>		<i>2,305.0</i>		<i>5-03-99</i>	<i>WLN</i>	
	<i>10</i>		<i>2,305.0</i>		<i>5-08-99</i>	<i>WLN</i>	
	<i>11</i>		<i>2,305.0</i>		<i>5-09-99</i>	<i>WLN</i>	
<i>33+16.23-L-</i>	<i>12</i>		<i>2,305.0</i>		<i>5-10-99</i>	<i>WLN</i>	<i>Per Plans</i>
	<i>Page &</i>	<i>Project</i>	<i>Total:</i>		<i>7-15-99</i>	<i>TWR</i>	
							<i>Checked By: MLF</i>
							<i>Date: 6-19-99</i>

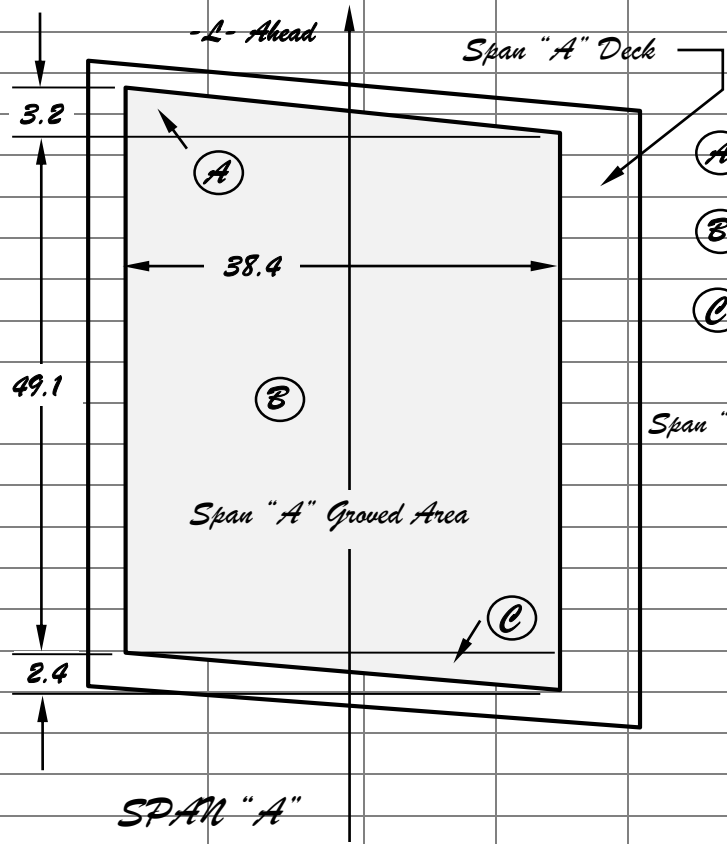
PAY RECORD BOOK ENTRY EXAMPLE

Line Code #284 Grooving Bridge Floors

6,220 SF @ \$ 0.65

8

Station	Rt./Lt.	Span	SF	Date	Initials	Remarks
103+35.85	Lt./Rt.	"A"	1992.9	9-23-98	DK7	Completed satisfactorily.



- (A) $0.5 \times 3.2 \times 38.4 = 61.4$
- (B) $38.4 \times 49.1 = 1,885.4$
- (C) $0.5 \times 2.4 \times 38.4 = 46.1$

Span "A" Total: 1,992.9

Page Total: 1992.9 9-23-98 DK7

Checked By: ML7
Date: 6-19-99

PAY RECORD BOOK ENTRY EXAMPLE

Line Code #296 Structural Steel

LS @ \$ 1,185,000.00

77

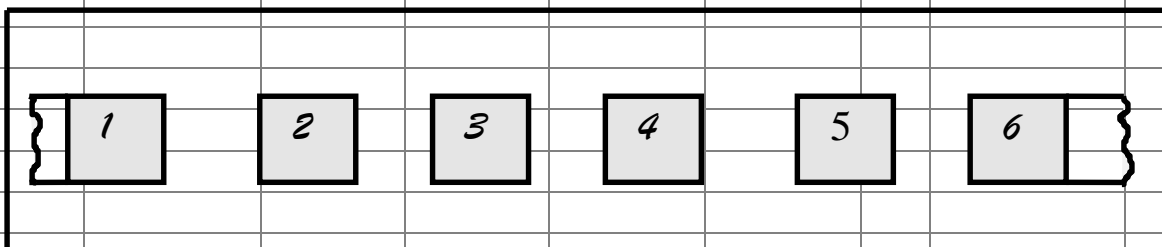
<i>Structure</i>	<i>Complete</i>	<i>Project</i>	<i>Paid</i>		<i>Amount</i>		<i>Date</i>	<i>Initials</i>	<i>Remarks</i>
<i>233+67.31 -L-</i>	<i>67%</i>	<i>39.4%</i>	<i>26.4%</i>		<i>\$1,185,000.00</i>		<i>6-18-99</i>	<i>HR7</i>	<i>NBL structure phase 1</i>
<i>33+86.45 - 1/2-</i>	<i>100%</i>	<i>22.3%</i>	<i>22.3%</i>		<i>\$ 264,255.00</i>		<i>9-19-98</i>	<i>HR7</i>	<i>-1/2- structure over -L-</i>
<i>233+87.31 - L-</i>	<i>100%</i>	<i>38.3%</i>	<i>38.3%</i>		<i>\$ 453,855.00</i>		<i>11-5-98</i>	<i>HR7</i>	<i>SBL Structure</i>
<i>233+67.31 -L-</i>	<i>100%</i>	<i>39.4%</i>	<i>13.0%</i>		<i>\$ 154,050.00</i>		<i>2-26-99</i>	<i>HR7</i>	<i>NBL structure phase 11</i>
		<i>Page &</i>	<i>Project</i>	<i>Total:</i>	<i>\$1,185,000.00</i>		<i>6-18-99</i>	<i>VGH</i>	
<p><i>I certify that this item was completed 7-20-99 in accordance with the terms of the contract.</i></p> <p><i>Signed: <u>I. M. Resident, PE</u> Resident Engineer</i></p> <p><i>Note: Percentages for payment are determined by the Engineer for each payment estimate period. Refer to contract Special Provisions if applicable.</i></p> <p align="right"><i>Checked By: ML7</i> <i>Date: 6-19-99</i></p>									

PAY RECORD BOOK ENTRY EXAMPLE

Line Code #301 24" Prestressed Concrete Piles

976 LF @ \$78.44

64



-L- ahead

*Bent #201 Station 125+76.34 -L-
Maximum penetration last 10 blows 1 1/2"*

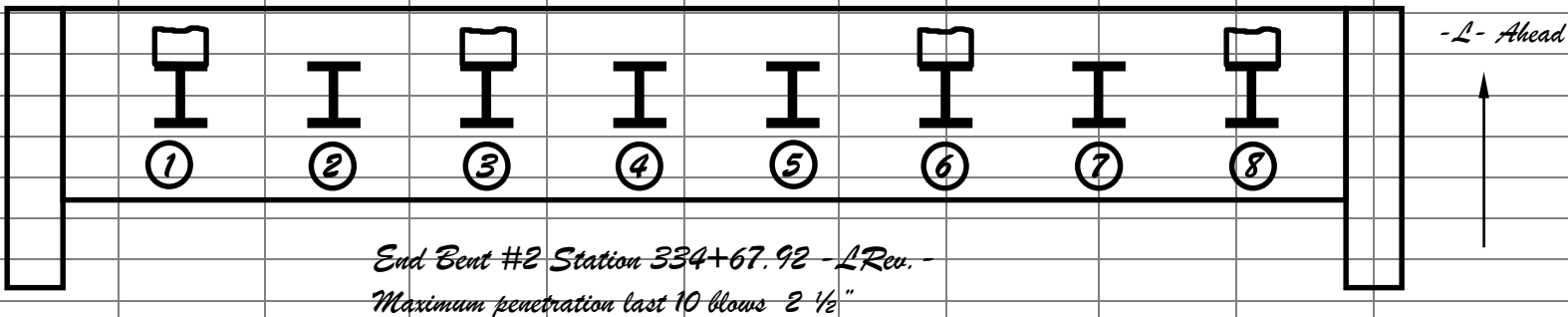
<i>File No.</i>	<i>Order Length</i>	<i>Casting</i>	<i>Stroke Length</i>	<i>Cut-off</i>	<i>Pay Length</i>	<i>Pen. Last 10 Blows</i>	<i>Date</i>	<i>Initials</i>	<i>Remarks</i>
<i>1</i>	<i>76.0'</i>	<i>p-508-76</i>	<i>7.8</i>	<i>0.0'</i>	<i>76.0'</i>	<i>1 1/2"</i>	<i>07-19-98</i>	<i>WLN</i>	
<i>2</i>	<i>76.0'</i>	<i>p-509-76</i>	<i>7.8</i>	<i>1.0'</i>	<i>75.0'</i>	<i>1 1/4"</i>	<i>07-19-98</i>	<i>WLN</i>	
<i>3</i>	<i>76.0'</i>	<i>p-521-76</i>	<i>7.8</i>	<i>1.0'</i>	<i>75.0'</i>	<i>1 1/8"</i>	<i>07-19-98</i>	<i>WLN</i>	
<i>4</i>	<i>76.0'</i>	<i>p-522-76</i>	<i>8.0</i>	<i>1.1'</i>	<i>74.9'</i>	<i>1-1/2"</i>	<i>07-19-98</i>	<i>WLN</i>	
<i>5</i>	<i>76.0'</i>	<i>p-526-76</i>	<i>8.0</i>	<i>1.1'</i>	<i>74.9'</i>	<i>1 1/8"</i>	<i>07-19-98</i>	<i>WLN</i>	
<i>6</i>	<i>76.0'</i>	<i>p-545-76</i>	<i>8.0</i>	<i>1.1'</i>	<i>74.9'</i>	<i>1 1/8"</i>	<i>07-19-98</i>	<i>WLN</i>	
			<i>Page Total:</i>		<i>450.7 LF</i>		<i>07-19-98</i>	<i>WLN</i>	
									<i>Checked By: MLF</i>
									<i>Date: 6-19-99</i>

PAY RECORD BOOK ENTRY EXAMPLE

Line Code #303 HP 12x53 Steel Piles

835 LF @ \$28.35

68



<i>Pile No.</i>	<i>Original Length</i>	<i>Splice Length</i>	<i>Cut-Off Length</i>	<i>Pay Length</i>	<i>Pen. last 10 Blows</i>	<i>Heat Number</i>	<i>Date</i>	<i>Initials</i>	<i>Remarks</i>
1	50.0'	0.0	1.8	48.2	1 1/4	37966	5-23-98	WCKJ	
2	50.0'	9.7	8.9	50.8	1 1/2	38456	5-23-98	WCKJ	35273 also
3	50.0'	8.8	4.8	54.0	1 1/2	37645	5-23-98	WCKJ	27161 also
4	50.0'	9.8	4.3	55.5	1 1/2	39723	5-23-98	WCKJ	29010 also
5	50.0'	8.7	7.3	51.4	1 1/4	39876	5-23-98	WCKJ	34569 also
6	50.0'	9.8	6.1	53.7	1 1/2	37987	5-23-98	WCKJ	27161 also
7	50.0'	8.6	1.5	57.1	2 1/2	39543	5-23-98	WCKJ	39887 also
8	50.0'	0.0	1.1	48.9	1 1/2	39564	5-23-98	WCKJ	
<i>Page Total:</i>					<i>419.6 LF</i>		<i>5-23-98</i>	<i>WCKJ</i>	
									<i>Checked By: ML7</i>
									<i>Date: 6-19-99</i>

PAY RECORD BOOK ENTRY EXAMPLE

Line Code #305 1'-0" X 1'-6" Concrete Parapet Rail

3,600 LF @ \$ 109.00

80

<i>Station</i>	<i>Station</i>	<i>Location</i>		<i>LF</i>	<i>Date</i>	<i>Initials</i>	<i>Remarks</i>
<i>61+34</i>	<i>69+25</i>	<i>-L2-</i>		<i>791.0</i>	<i>9-20-98</i>	<i>WLN</i>	
<i>49+75</i>	<i>61+34</i>	<i>-L2-</i>		<i>1,159.4</i>	<i>9-21-98</i>	<i>WLN</i>	
<i>38+35</i>	<i>49+75</i>	<i>-L2-</i>		<i>1,140.4</i>	<i>9-22-98</i>	<i>WLN</i>	
<i>33+25</i>	<i>38+35</i>	<i>-L2-</i>		<i>509.8</i>	<i>9-23-98</i>	<i>RNG</i>	
		<i>Page and</i>	<i>Project</i>	<i>Total: 3,600.6 LF</i>	<i>9-28-98</i>	<i>FNP</i>	
							<i>Checked By: MLF</i>
							<i>Date: 6-19-99</i>

PAY RECORD BOOK ENTRY EXAMPLE

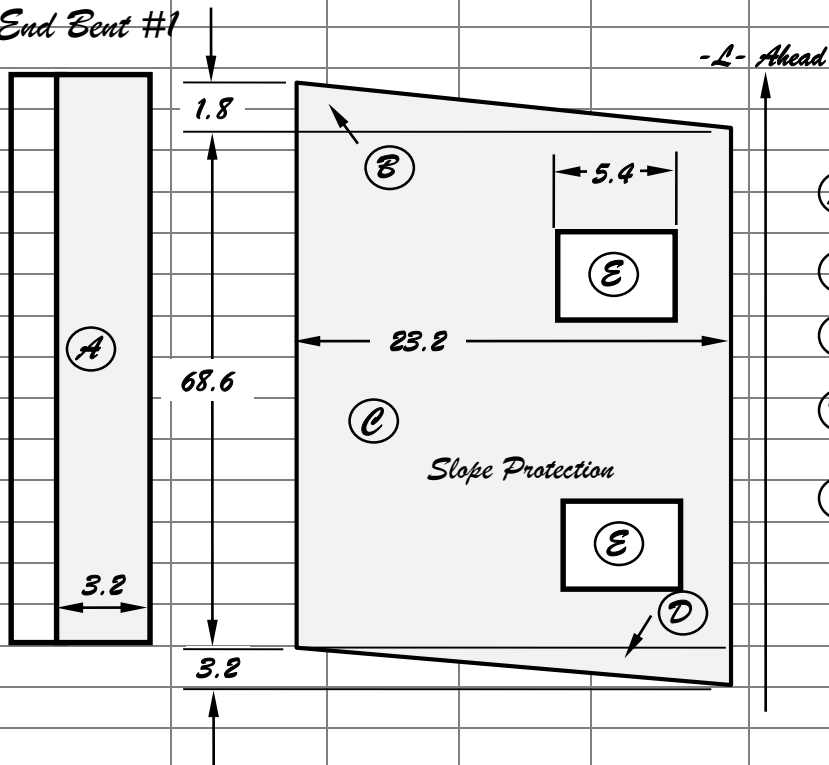
Line Code #308 4" Slope Protection

1,230 S $\frac{1}{4}$ @ \$ 33.50

53

Station	Rt./Lt.	S $\frac{1}{4}$	Date	Initials	Remarks
185+50-L-	Lt.	205.7	9-28-98	FUP	Under End Bent # 1- $\frac{1}{2}$ -Gillian Road

End Bent #1



(A) $(68.6 + 1.8) \times 2.4 = 169.10$

(B) $0.5 \times 1.8 \times 23.2 = 20.88$

(C) $68.6 \times 23.2 = 1591.52$

(D) $0.5 \times 3.2 \times 23.2 = 37.12$

(E) $2 \times (3.0 \times 5.4) = 32.40$

Total: 1851.02 = 205.7 S $\frac{1}{4}$

9.0

Page Total: 205.7 S $\frac{1}{4}$ 9-28-98 FUP

Checked By: MLF

Date: 6-19-99

PAY RECORD BOOK ENTRY EXAMPLE

Line Code #310 Expansion Joint Seal

LS @ \$27,000.00

87

<i>Station</i>	<i>Location</i>	<i>Str #</i>	<i>Complete</i>	<i>Amount</i>	<i>Date</i>	<i>Initials</i>	<i>Remarks</i>
103+23.33	-M-	1	50%	\$29,500.00	6-6-98	WLN	Beat #17
103+23.33	-M-	1	50%	\$29,500.00	7-14-98	WLN	Beat #16

*I certify that this item was completed
7-14-98 in accordance with the terms
of the contract.*

*Signed: I. M. Resident, PE
Resident Engineer*

Page & Project Total: \$59,000.00 8-15-99 FRW

*Checked By: MLF
Date: 6-19-99*

PAY RECORD BOOK ENTRY EXAMPLE

Line Code #268 Culvert Excavation - Sta. 284+63.29 -L-

LS @ \$15,000.00

12

Station	Loc.	Lt./Rt.			Complete	Total	Date	Initials	Remarks
<i>336+85.45</i>	<i>-L Rev. -</i>	<i>Rt.</i>			<i>100%</i>	<i>\$15,000.00</i>	<i>3-19-99</i>	<i>LRN</i>	
			<i>Page &</i>	<i>Project</i>	<i>Total:</i>	<i>\$15,000.00</i>	<i>4-2-99</i>	<i>MCK</i>	

I certify that this item was completed
3-19-99 in accordance with the terms
of the contract.
 Signed: *J. M. Resident, PE*
Resident Engineer

Checked By: ML7
Date: 1-19-00

PAY RECORD BOOK ENTRY EXAMPLE

Line Code #274 Removal of Existing Structure @ Sta. 185+23.11 -L- LS @ \$36,500.00 24

Station	Lt./Rt.		Complete	Amount	Date	Initials	Remarks
185+23.11-L-	Rt.		100%	\$36,500.00	12-16-99	EKC	Completed 10-21-99
		Page &	Project	Total:	\$36,500.00	12-16-99	EKC

I certify that this item was completed
 10-21-99 in accordance with the terms of the contract.
 Signed: I. M. Resident, PE
 Resident Engineer

Checked By: MLF
 Date: 1-19-00

PAY RECORD BOOK ENTRY EXAMPLE

Line Code #276 Foundation Excavation for Bent No. 2 @ Sta. 341+34.54 -L- LS @ \$2,500.00 28

<i>Station</i>	<i>Loc.</i>	<i>Lt./Rt.</i>		<i>Complete</i>	<i>Amount</i>	<i>Date</i>	<i>Initials</i>	<i>Remarks</i>
<i>341+34.54</i>	<i>-L-</i>	<i>Lt.</i>		<i>100%</i>	<i>\$2,500.00</i>	<i>11-21-98</i>	<i>JFB</i>	<i>Note: Footing elevation was lowered 1.5' by K. J. Morris - Bridge Construction Engineer No additional compensation per Section 410 of the Standard. Specifications</i>
			<i>Page & Project</i>	<i>Total:</i>	<i>\$2,500.00</i>	<i>12-9-98</i>	<i>MKT</i>	
<p>Note: Foundation Excavation can also be measured by Cross-section method. See Contract for proper payment method. See Unclassified Excavation or Borrow Excavation for examples of measurement and documentation.</p>								
<p><i>I certify that this item was completed 11-21-98 in accordance with the terms of the contract.</i></p>								
<p><i>Signed: <u>J. M. Resident, PE</u> Resident Engineer</i></p>								
<p><i>Checked By: MKF</i></p>								
<p><i>Date: 7-8-99</i></p>								

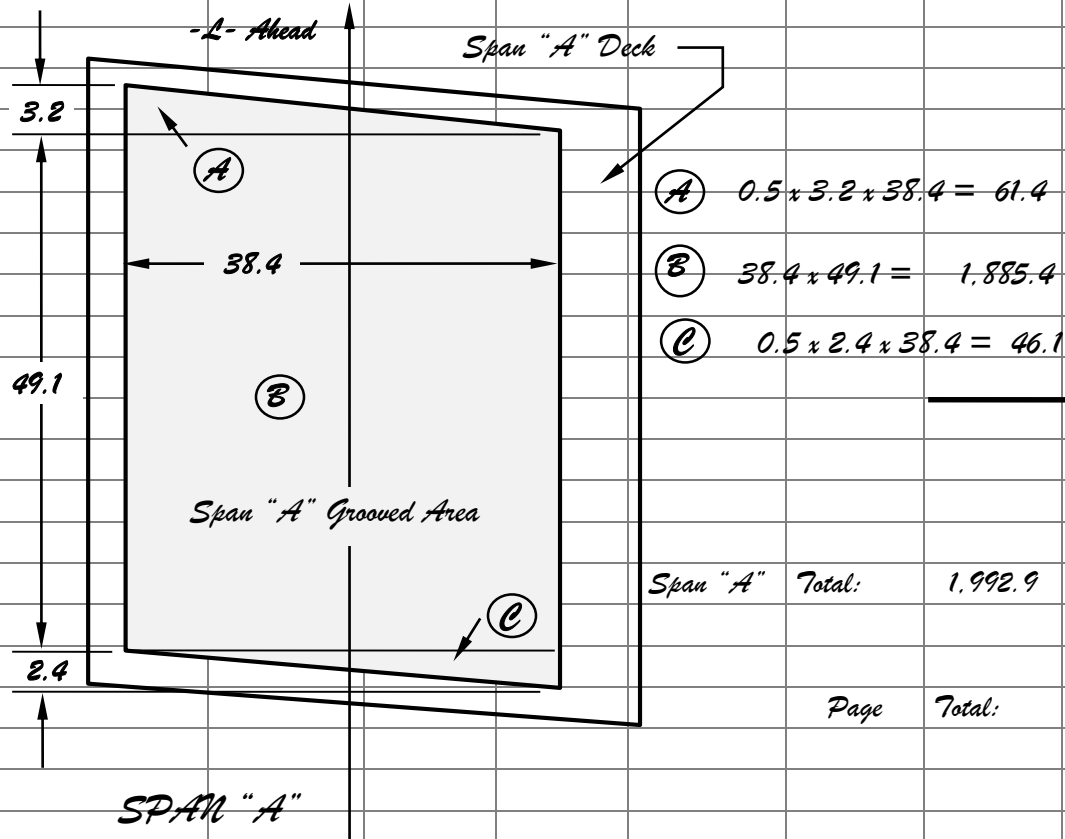
PAY RECORD BOOK ENTRY EXAMPLE

Line Code #284 Grooving Bridge Floors

6,220 SF @ \$ 0.65

38

<i>Station</i>	<i>Rt./Lt.</i>	<i>Span</i>	<i>SF</i>	<i>Date</i>	<i>Initials</i>	<i>Remarks</i>
<i>103+35.85</i>	<i>Lt./Rt.</i>	<i>"A"</i>	<i>1992.9</i>	<i>DK7</i>	<i>9-23-98</i>	<i>Completed satisfactorily.</i>



Page Total: 1992.9 DK7 9-23-98

*Checked By: ML7
Date: 6-19-99*

PAY RECORD BOOK ENTRY EXAMPLE

Line Code #289 Class "A" Concrete - Bridge

324CY @ \$296.50

59

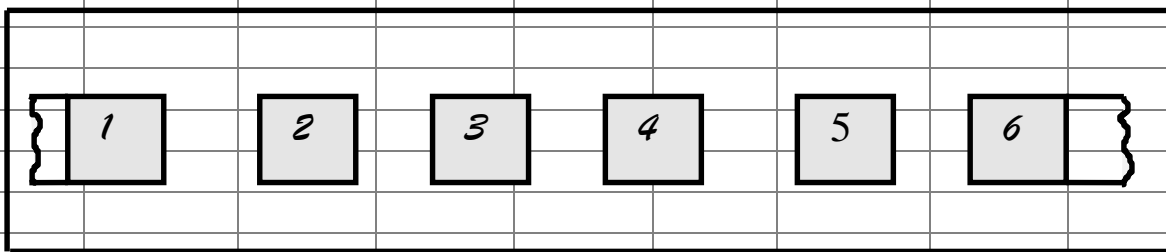
<i>Structure Member</i>	<i>Plan 2t</i>				<i>CY</i>		<i>Date</i>	<i>Initials</i>	<i>Remarks</i>
<i>Cap End Bent #1-pour 1</i>	<i>14.0</i>				<i>14.0</i>		<i>6-16-97</i>	<i>WLN</i>	
<i>Cap End Bent #1-pour 2</i>	<i>15.3</i>				<i>15.3</i>		<i>6-22-97</i>	<i>WLN</i>	
<i>Cap Bent #1</i>	<i>14.5</i>				<i>14.5</i>		<i>7-06-97</i>	<i>WLN</i>	
<i>Cap Bent #2</i>	<i>14.5</i>				<i>14.5</i>		<i>7-09-97</i>	<i>WLN</i>	
<i>Cap Bent #3</i>	<i>14.5</i>				<i>14.5</i>		<i>7-12-97</i>	<i>WLN</i>	
<i>Cap Bent #4</i>	<i>14.5</i>				<i>14.5</i>		<i>7-14-97</i>	<i>WLN</i>	
<i>Cap Bent #5</i>	<i>14.5</i>				<i>14.5</i>		<i>7-16-97</i>	<i>WLN</i>	
<i>Cap Bent #6</i>	<i>14.5</i>				<i>14.5</i>		<i>7-16-97</i>	<i>WLN</i>	
<i>Cap Bent #7</i>	<i>14.5</i>				<i>14.5</i>		<i>7-23-97</i>	<i>WLN</i>	
<i>Cap Bent #8</i>	<i>14.5</i>				<i>14.5</i>		<i>7-23-97</i>	<i>WLN</i>	
<i>Cap Bent #9</i>	<i>14.5</i>				<i>14.5</i>		<i>7-27-97</i>	<i>WLN</i>	
<i>Cap Bent #10</i>	<i>14.5</i>				<i>14.5</i>		<i>7-27-97</i>	<i>WLN</i>	
							<i>587 3-19-99</i>		
					<i>174.3</i>				
				<i>Page Total:</i>	<i>145.0</i>	<i>CY</i>	<i>8-28-97</i>	<i>FWR</i>	
									<i>Checked By: MLF</i>
									<i>Date: 6-19-99</i>

PAY RECORD BOOK ENTRY EXAMPLE

Line Code #301 24" Prestressed Concrete Piles

976 L7 @ \$78.44

64



Bent #201 Station 123+76.34 -L-

Required Bearing: 125 Tons; Pile Cut-off Elev. +11.321

<i>Pile No.</i>	<i>Order Length</i>	<i>Casting</i>	<i>Stroke Length</i>	<i>Cut-off</i>	<i>Pay Length</i>	<i>Pen. Last</i>	<i>Bearing Tons</i>	<i>Date</i>	<i>Initials</i>	<i>Remarks</i>
						<i>10 Blows</i>				
<i>1</i>	<i>76.0'</i>	<i>p-508-76</i>	<i>7.8</i>	<i>0.0'</i>	<i>76.0'</i>	<i>112"</i>	<i>191.4</i>	<i>07-19-98</i>	<i>WLDU</i>	
<i>2</i>	<i>76.0'</i>	<i>p-509-76</i>	<i>7.8</i>	<i>1.0'</i>	<i>75.0'</i>	<i>114"</i>	<i>217.3</i>	<i>07-19-98</i>	<i>WLDU</i>	
<i>3</i>	<i>76.0'</i>	<i>p-521-76</i>	<i>7.8</i>	<i>1.0'</i>	<i>75.0'</i>	<i>118"</i>	<i>233.2</i>	<i>07-19-98</i>	<i>WLDU</i>	
<i>4</i>	<i>76.0'</i>	<i>p-522-76</i>	<i>8.0</i>	<i>1.1'</i>	<i>74.9'</i>	<i>1-112"</i>	<i>129.6</i>	<i>07-19-98</i>	<i>WLDU</i>	
<i>5</i>	<i>76.0'</i>	<i>p-526-76</i>	<i>8.0</i>	<i>1.1'</i>	<i>74.9'</i>	<i>118"</i>	<i>233.2</i>	<i>07-19-98</i>	<i>WLDU</i>	
<i>6</i>	<i>76.0'</i>	<i>p-545-76</i>	<i>8.0</i>	<i>1.1'</i>	<i>74.9'</i>	<i>118"</i>	<i>233.2</i>	<i>07-19-98</i>	<i>WLDU</i>	
<i>Page Total:</i>					<i>450.7</i>	<i>L7</i>		<i>07-19-98</i>	<i>WLDU</i>	

Checked By: ML7

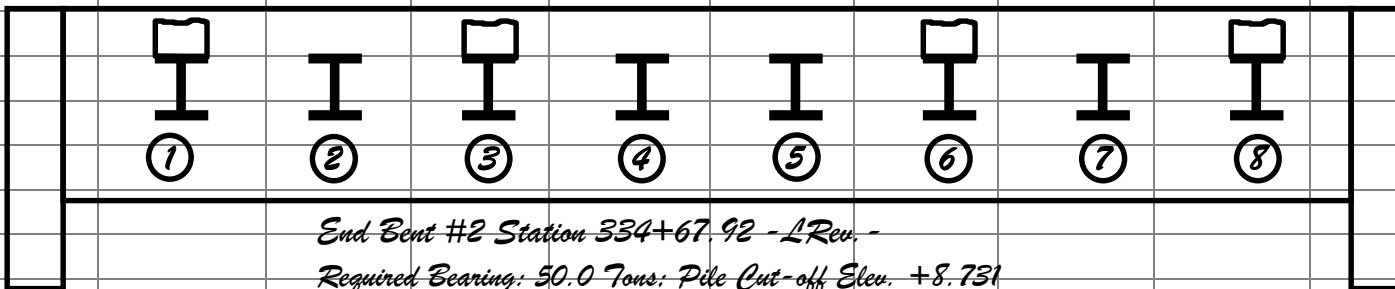
Date: 6-19-99

PAY RECORD BOOK ENTRY EXAMPLE

Line Code #303 HP 12x53 Steel Piles

835 L7 @ \$28.35

68



Pile No.	Original Length	Splice Length	Cut-Off Length	Pay Length	Pen. last	Bearing Tons	Number	Date	Initials	Remarks
					10 Blows					
1	50.0'	0.0	1.8	48.2	1 1/2	76.9	37966	5-23-98	MCKJ	
2	50.0'	9.7	8.9	50.8	1 1/2	69.4	38456	5-23-98	MCKJ	35273 also
3	50.0'	8.8	4.8	54.0	1 <u>2</u>	73.0	37645	5-23-98	MCKJ	27161 also
4	50.0'	9.8	4.3	55.5	1 1/2	69.4	39723	5-23-98	MCKJ	29010 also
5	50.0'	8.7	7.3	51.4	1 1/2	76.9	39876	5-23-98	MCKJ	34569 also
6	50.0'	9.8	6.1	53.7	1 1/2	69.4	37987	5-23-98	MCKJ	27161 also
7	50.0'	8.6	1.5	57.1	2 1/2	50.0	39543	5-23-98	MCKJ	39887 also
8	50.0'	0.0	1.1	48.9	1 <u>2</u>	73.0	39564	5-23-98	MCKJ	
		Page Total:		419.6 L7				5-23-98	MCKJ	

Checked By: MCKJ

Date: 6-19-99

PAY RECORD BOOK ENTRY EXAMPLE

Line Code #305 1'-0" X 1'-6" Concrete Parapet Rail

3,600 LF @ \$ 109.00

80

<i>Station</i>	<i>Station</i>	<i>Location</i>			<i>LF</i>		<i>Date</i>	<i>Initials</i>		<i>Remarks</i>
<i>61+34</i>	<i>69+25</i>	<i>-L2-</i>			<i>791.0</i>		<i>9-20-98</i>	<i>WLN</i>		
<i>49+75</i>	<i>61+34</i>	<i>-L2-</i>			<i>1,159.4</i>		<i>9-21-98</i>	<i>WLN</i>		
<i>38+35</i>	<i>49+75</i>	<i>-L2-</i>			<i>1,140.4</i>		<i>9-22-98</i>	<i>WLN</i>		
<i>33+25</i>	<i>38+35</i>	<i>-L2-</i>			<i>509.8</i>		<i>9-23-98</i>	<i>RUG</i>		
		<i>Page and</i>	<i>Project</i>	<i>Total</i>	<i>3,600.6</i>	<i>LF</i>	<i>9-28-98</i>	<i>FNP</i>		
										<i>Checked By: MLF</i>
										<i>Date: 6-19-99</i>

PAY RECORD BOOK ENTRY EXAMPLE

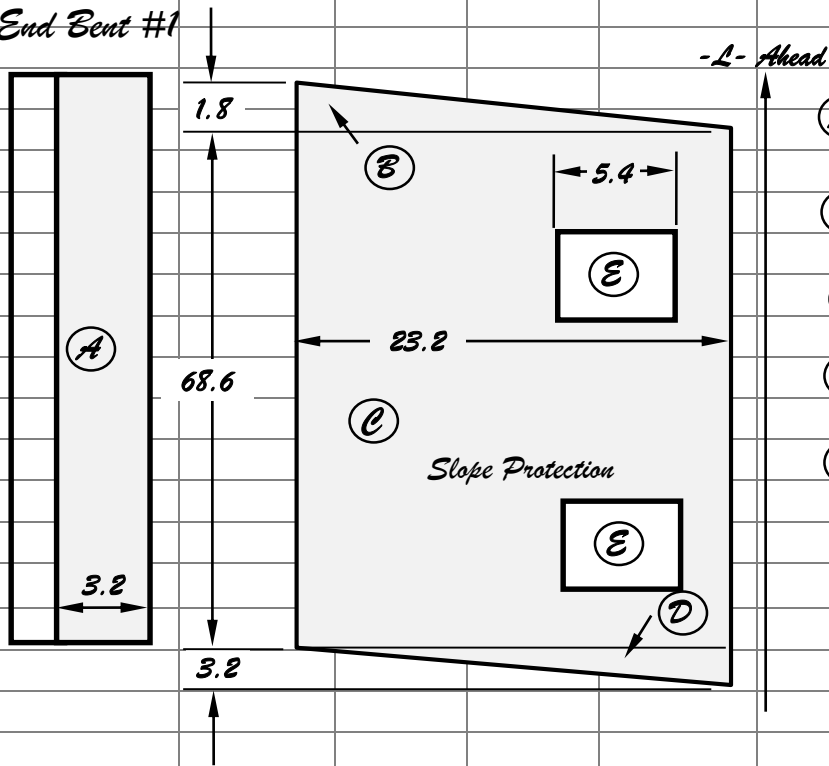
Line Code #308 4" Slope Protection

1,230 S $\frac{1}{4}$ @ \$ 33.50

53

Station	Rt./Lt.	S $\frac{1}{4}$	Date	Initials	Remarks
185+50-L-	Lt.	205.7	9-28-98	FWP	Under End Bent # 1- $\frac{1}{2}$ -Gillian Road

End Bent #1



Ⓐ $(68.6 + 1.8) \times 2.4 = 169.10$

Ⓑ $0.5 \times 1.8 \times 23.2 = 20.88$

Ⓒ $68.6 \times 23.2 = 1591.52$

Ⓓ $0.5 \times 3.2 \times 23.2 = 37.12$

Ⓔ $2 \times (3.0 \times 5.4) = 32.40$

Total: 1851.02 = 205.7 S $\frac{1}{4}$

9.0

Page Total: 205.7 S $\frac{1}{4}$ 9-28-98 FWP

Checked By: ML7

Date: 6-19-99

