



# ROADWAY BULLETIN

## NCDOT Construction Unit

### Geotextile Fabric Identification

Other than coming right out of an exciting Geotechnical training class, it can be hard to tell if your contractor has the correct fabric just by looking at it. Requirements for fabric certification and identification are listed in Article 1056-3. All geotextiles used on NCDOT projects should be on our [APL](#) and current with AASHTO requirements. AASHTO requires markings on the geotextiles.

The marking will NOT always say the brand name (TenCate Mirafi 180N in example to the right) but it will **always show a series of letters and numbers which can be used for tracing the product to its manufacturer.**

This applies to Type 1 through 4 geotextiles for the 2018 Specifications and Type 1 through 3 and 5A for the 2024 Specifications.

If a geotextile on your project is one of the applicable NCDOT types and it is for a permanent application, then it should be on the APL and it should be marked with at least the ID for the plant/manufacturer.

In our specific example, TenCate Mirafi 180N is approved as a Type 2 Geotextile. The company name as well as the product name can be used to search for it on the [APL](#), as shown below.

1. **Geotextile Fabric Identification**
2. **Expansion Material along Frames**
3. **AST Emulsion Rates**

Have a suggestion for future bulletins? If you have any questions or Recommendations click [HERE](#) and submit it.

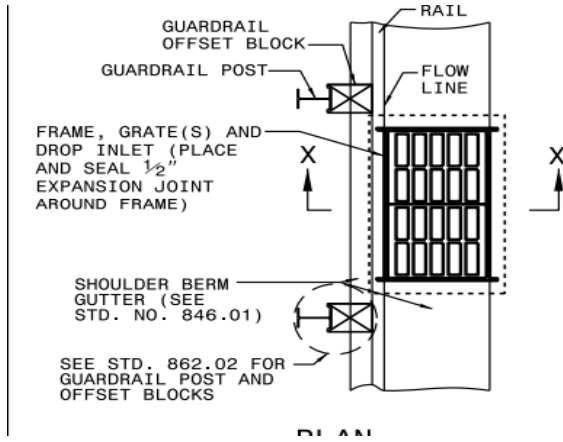
[BULLETIN SIGNUP LINK](#)

[BULLETIN ARCHIVES](#)



Product ID	Plant ID	Company Name	Product Group	Product Category	Product Name	Model Number	Product Status	Description
<a href="#">NP12-6140</a>		TenCate Geosynthetics	Geotextiles	Geotextiles - Type 2	Mirafi 180N	180N	Approved	**See Article 1056-3 & Comments**Mirafi@180N is needlepunched nonwoven geotextile composed of polypropylene fibers, which are formed into a stable network such that the fibers retain their relative position.Mirafi@180N is inert to biological degradation.

**Expansion Material at Frames**



**INCORRECT LOCATION**



**CORRECT LOCATION**

NCDOT Standard Drawings call for placement of a 1/2" expansion joint around frames in curbing. The dotted line shown in the plan view shown here is actually representing the outline of the drainage structure underneath the curbing, it is often misunderstood to represent the location of the expansion material. Improper placement can lead to cracking/spalling as the concrete expands against the rigid frame. Incorrect installation can be found in the picture **above right**. A correct example is located **below right**.

**Asphalt Surface Treatment Emulsion Rates**

For AST projects, it is the intent to pay the contractor for actual gallons of emulsion used if we have an accurate measurement such as meter printouts, sticking the tank, etc. Make sure these measurements seem reasonable compared to the specified rates. If there is not an easy way to get an accurate measurement, then it is recommended to use the specified rate.

**AST MANUAL**

State Construction Engineer Wiley Jones			
Eastern Region		Western Region	
<b>ASCE</b>	Troy Brooks	<b>ASCE</b>	Brian Skeens
<b>RBCE</b>	Aaron Earwood	<b>RBCE</b>	Aaron Griffith
<b>Division</b>	<b>Area Engineer</b>	<b>Division</b>	<b>Area Engineer</b>
1&2	Randy Hall	7	Marcus Kiser
3&4	David Candela	9	Vickie Davis
5	Liam Shannon	10	Christopher Fine
6&8	John Partin	11&12	Mark Biggerstaff
		13&14	Aaron Powell