

# NCDOT Construction Unit

Visit Our Website | (919) 707-2400

## Unit Leadership

### Troy Brooks, PE

State Construction Engineer  
(919) 707-2402 | [tbrooks2@ncdot.gov](mailto:tbrooks2@ncdot.gov)

### Brian Skeens, PE

Assistant State Construction Engineer (Western)  
(828) 803-1461 | [bcskeens@ncdot.gov](mailto:bcskeens@ncdot.gov)

### Liam Shannon, PE

Assistant State Construction Engineer (Eastern)  
(919) 707-2403 | [lwshannon@ncdot.gov](mailto:lwshannon@ncdot.gov)

### Aaron Earwood, PE

State Bridge Construction Engineer  
(919) 730-5138 | [aeearwood@ncdot.gov](mailto:aeearwood@ncdot.gov)

### Michelle Gaddy, PE

State Construction Operations Engineer  
(919) 707-2490 | [mhgaddy@ncdot.gov](mailto:mhgaddy@ncdot.gov)

## Western Region

### Area Construction Engineers:

#### Divisions 7 & 9

Marcus Kiser, PE  
(336) 215-9170 | [mkkiser@ncdot.gov](mailto:mkkiser@ncdot.gov)

#### Division 10

Christopher Fine, PE  
(336) 225-4266 | [lcfine@ncdot.gov](mailto:lcfine@ncdot.gov)

#### Divisions 11 & 12

Mark Biggerstaff, PE  
(828) 803-9954 | [mabiggerstaff@ncdot.gov](mailto:mabiggerstaff@ncdot.gov)

#### Divisions 13 & 14

Aaron Powell, PE  
(828) 417-2629 | [apowell@ncdot.gov](mailto:apowell@ncdot.gov)

## Eastern Region

### Area Construction Engineers:

#### Divisions 1 & 2

Daniel Waugh, PE  
(252) 723-5727 | [dgwaugh1@ncdot.gov](mailto:dgwaugh1@ncdot.gov)

#### Divisions 3 & 4

David Candela, PE  
(910) 524-4931 | [dacandela@ncdot.gov](mailto:dacandela@ncdot.gov)

#### Division 5

Meredith Hayes, PE  
(336) 266-2463 | [mdhayes3@ncdot.gov](mailto:mdhayes3@ncdot.gov)

#### Divisions 6 & 8

John Partin, PE  
(336) 847-1226 | [jpartin@ncdot.gov](mailto:jpartin@ncdot.gov)

## Bridge Construction Engineers

### Western Region:

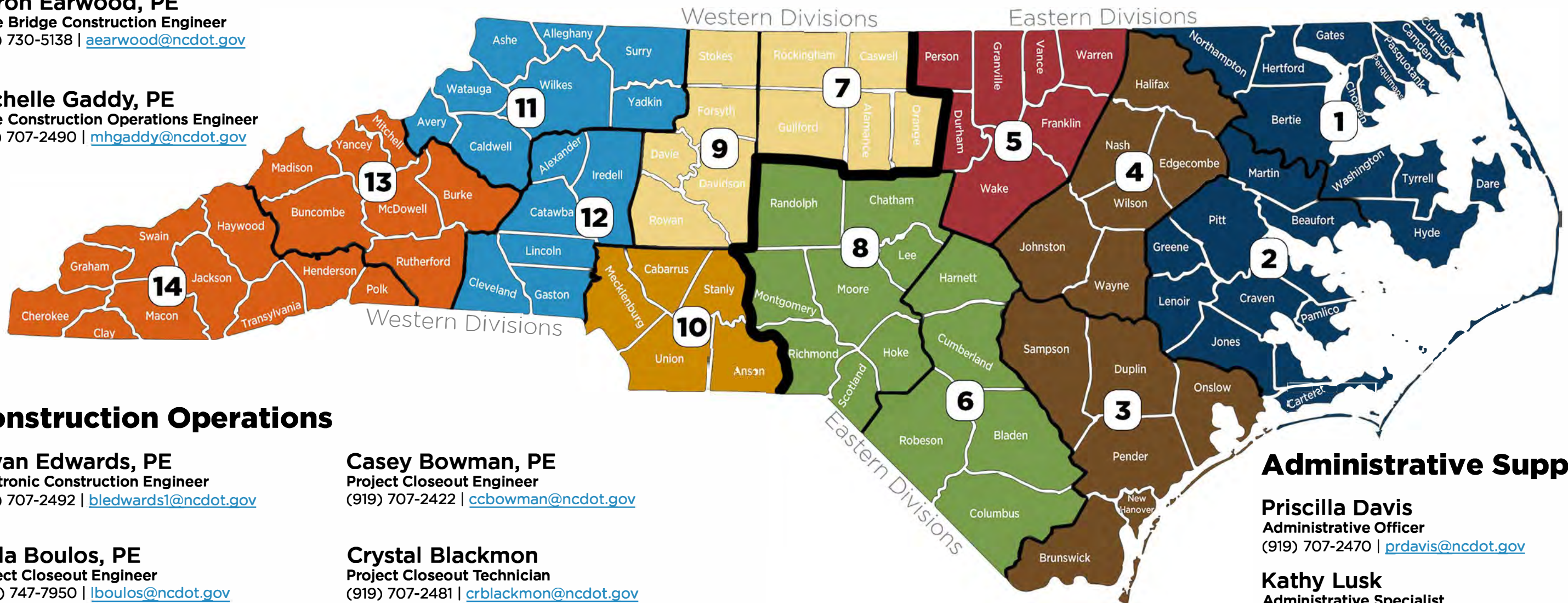
Divisions 7, 9, 10, 12:  
Aaron Griffith, PE  
(336) 215-9170 | [aegriffith@ncdot.gov](mailto:aegriffith@ncdot.gov)

Divisions 11, 13, 14:  
Tyler Rogers, PE  
(828) 593-7028 | [trrogers1@ncdot.gov](mailto:trrogers1@ncdot.gov)

### Eastern Region:

Divisions 1-4:  
Randy Hall, PE  
(252) 402-9957 | [rshall1@ncdot.gov](mailto:rshall1@ncdot.gov)

Divisions 5, 6, 8:  
Patrick Cheeves, PE  
(678) 602-8504 | [picheeves@ncdot.gov](mailto:picheeves@ncdot.gov)



## Construction Operations

### Bryan Edwards, PE

Electronic Construction Engineer  
(919) 707-2492 | [bledwards1@ncdot.gov](mailto:bledwards1@ncdot.gov)

### Leila Boulos, PE

Project Closeout Engineer  
(336) 747-7950 | [lboulos@ncdot.gov](mailto:lboulos@ncdot.gov)

### Casey Bowman, PE

Project Closeout Engineer  
(919) 707-2422 | [cbowman@ncdot.gov](mailto:cbowman@ncdot.gov)

### Crystal Blackmon

Project Closeout Technician  
(919) 707-2481 | [crblackmon@ncdot.gov](mailto:crblackmon@ncdot.gov)

## Administrative Support

### Priscilla Davis

Administrative Officer  
(919) 707-2470 | [prdavis@ncdot.gov](mailto:prdavis@ncdot.gov)

### Kathy Lusk

Administrative Specialist  
(919) 707-2408 | [klusk@ncdot.gov](mailto:klusk@ncdot.gov)