



NORTH CAROLINA
Department of Transportation

CarolinasAGC
Building Your Business



2022 AGC/NCDOT WORKSHOP

Roadway – Materials Breakout

Atlantic Beach, NC

March 22-23, 2022

Material Escalation

- Price Volatility of Construction Materials
 - Realistic Bids?
 - Firm Price Quotes from Suppliers?
 - Duration of projects?

Material Escalation

What tools do we have to assist now?

- Material Prepayments (Article 109-5)
 - 95% of the delivered cost of materials, or
 - 95% of the invoice cost for bulky materials requiring fabrication at an offsite location
 - Consent of Surety
 - Bill of Sale
 - Copy of invoice from material supplier
 - $\geq \$10,000$

Material Escalation

What tools do we have to assist now?

- Adjust Intermediate Contract Times
 - Need Feedback Before or During project advertisement

Material Escalation

- Good ways to transfer a portion of risk to NCDOT, resulting in lower bids?
 - Diesel Fuel Provision
 - Asphalt Binder Provision

Monthly Average Terminal F.O.B. Price for Diesel Fuel



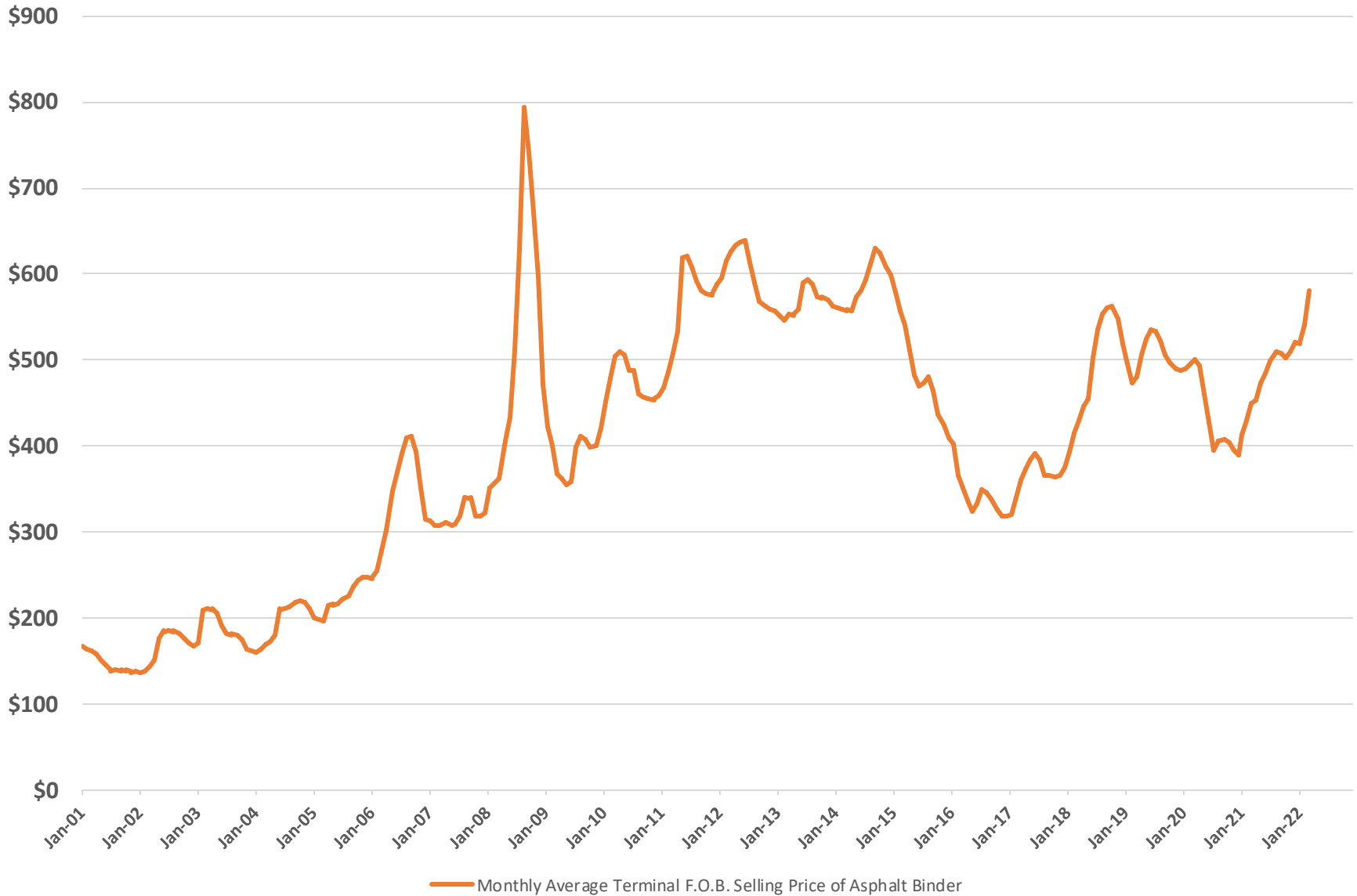
Material Escalation

- Fuel Adjustment Provision (Article 109-8)
 - Respective Diesel Fuel Usage Factor

$$S = (A - B)(\sum QF)$$

- S = Fuel Price Adjustment
- A = Average Terminal Price
- B = Base Index Price
- Q = Partial Payment Quantity for Contract Item
- F = Fuel Factor for Contract Item

Monthly Average Terminal F.O.B. Selling Price of Asphalt Binder



Material Escalation

- Asphalt Binder for Plant Mix (Article 620-4)

$$A = B + (D - C)$$

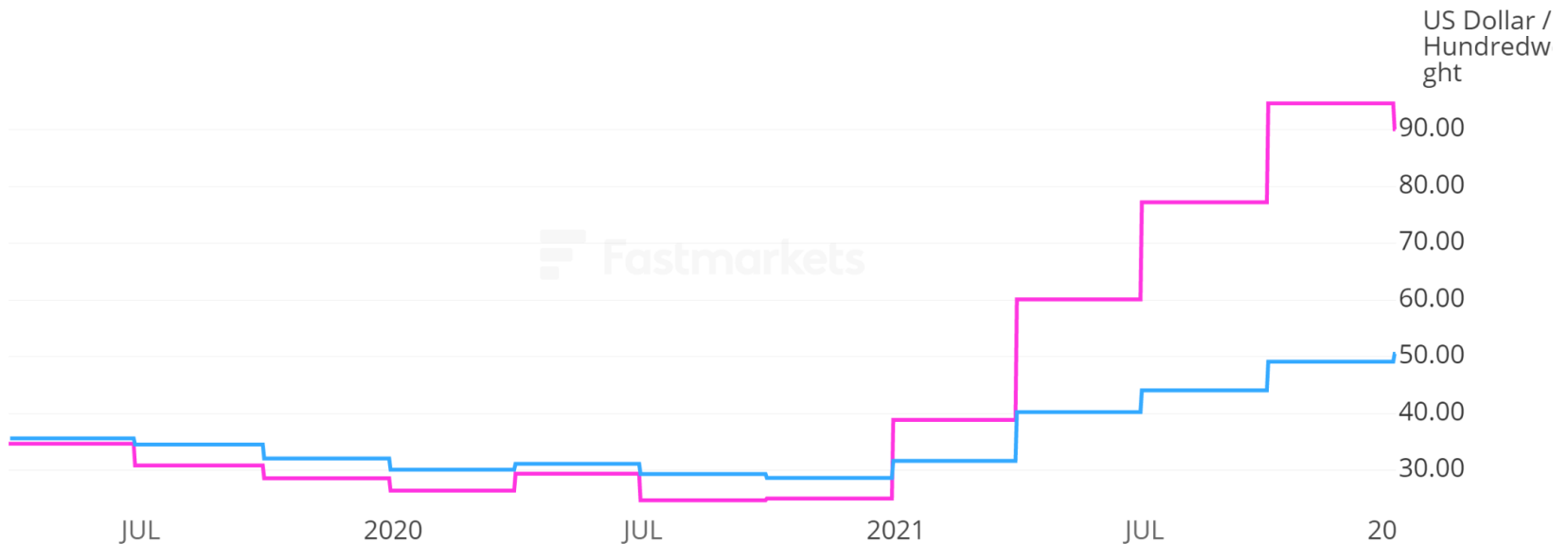
- A = Adjusted Contract Unit Price
- B = Contract Unit Price
- C = Base Price Index
- D = Monthly Average Terminal F.O.B. Selling Price

Licence user: wwjones1@ncdot.gov Downloaded on 2 Mar 2022 @ 17:37



Steel Hot-Rolled Coil and Steel Reinforcing Bar

- Mid MB-STE-0184 (Quarterly Average) - Steel hot-rolled coil index, fob mill US, \$/cwt
- Mid MB-STE-0170 (Quarterly Average) - Steel reinforcing bar (rebar), fob mill US, \$/cwt



This material is provided by Euromoney Global Limited (a company registered in England and Wales under number 142215) doing business as Fastmarkets MB and Fastmarkets IM, and Metal Bulletin Holdings LLC doing business as Fastmarkets AMM, collectively referred to in the material as 'Fastmarkets'. It is provided to you subject to your compliance with the terms of your license agreement with Fastmarkets, in addition to the Fastmarkets Copyright Notice and Disclaimer.

If you need additional access please contact hello@fastmarkets.com

© Fastmarkets 2021

Material Escalation

- FHWA is “legally prohibited from approving the use of Federal-aid highway funds for retroactive price adjustment clauses in existing contracts.”
 - Any incremental costs associated with proposed change will be covered solely by State funds and will not involve use of Federal funds, apportioned or otherwise
 - Any change would not adversely affect the conditions upon which the project’s Finance Plan was approved.
 - *April 8, 2004 memo*

Steel Price Adjustment Special Provision

- **Proactive Steps for Future Projects**
- For new projects and new contracts, contractors and owners should consider discussing how the risk of cost escalation can be minimized or shared in the future. If past contracts did not provide any answers, a price escalation clause is often discussed for future contracts.

Steel Price Adjustment Special Provision Workgroup

- AGC
- Bridge Contractors
- Materials and Tests
- Overhead Sign Contractor
- Steel Industry Representative
- Design Build Contractors
- Guardrail Contractors
- Division Construction Engineers
- Contract Standards Unit
- Construction Unit

Steel Price Adjustment Special Provision Workgroup

- Other States' Steel Adjustment Provisions
 - 2019 AASHTO COC study found 16 of 52 respondents have or used a steel price adjustments
 - Ohio (AMM) (Required Participation)
 - Virginia (PPI) (opt in/ opt out)

NCDOT Steel Price Adjustment Special Provision Highlights

Purpose

- Adjust monthly progress payments for changes in the raw price cost of steel
- Applies to Steel Components
 - permanently incorporated into the work
- Does not provide adjustment for
 - Cost of Fabrication
 - Coating
 - Labor
 - Shipping
 - Storage
 - Equipment

NCDOT Steel Price Adjustment Special Provision Highlights

- Eligible Contract Line Items
- Establishing Base Price
- Price Adjustment Calculation
- Contractor Initial Submittal Requirement
- Contractor Submittal Requirements
 - Steel Product Documentation Package
 - Monthly Calculator Spreadsheet

NCDOT Steel Price Adjustment Special Provision Highlights

- Eligible Contract Line Items
 - Posted on the web
- Line item is not listed, not eligible
- Based on Transport Item Number

Line #	ItemNumber	Sec #	Description	Quantity Unit	Unit Bid Price	Amount Bid
0193	8217000000-E	425	REINFORCING STEEL (BRIDGE)	123,931 LB	1.10	136,324.10
0194	8238000000-E	425	SPIRAL COLUMN REINFORCING STEEL (BRIDGE)	20,957 LB	1.10	23,052.70
0195	8280000000-E	440	APPROX LBS STRUCTURAL STEEL	550,300 LS	1,196,000.00	1,196,000.00
0196	8475000000-E	460	TWO BAR METAL RAIL	844.18 LF	115.00	97,080.70
0197	8517000000-E	460	1'-***X ***** CONCRETE PARA-PET (1'-2" X 2'-6")	393.71 LF	125.00	49,213.75
0198	8517000000-E	460	1'-***X ***** CONCRETE PARA-PET (1'-2" X 3'-2 3/4")	505.38 LF	150.00	75,807.00
0199	8531000000-E	462	4" SLOPE PROTECTION	57 SY	125.00	7,125.00
0200	8608000000-E	876	RIP RAP CLASS II (2'-0" THICK)	67.3 TON	72.00	4,845.60
0201	8622000000-E	876	GEOTEXTILE FOR DRAINAGE	74.8 SY	10.00	748.00
0202	8654000000-N	SP	DISC BEARINGS	Lump Sum LS	90,000.00	90,000.00
0203	8706000000-N	SP	EXPANSION JOINT SEALS	Lump Sum LS	85,000.00	85,000.00
0204	8867000000-E	SP	GENERIC STRUCTURE ITEM MOMENT SLAB WITH SIDEWALK	102.75 LF	335.00	34,421.25
0205	8007000000-N	400	CONSTRUCTION, MAINTENANCE, & REMOVAL OF TEMP STRUCTURE AT STA ***** (13+30.84 -Y3- DET)	Lump Sum LS	535,000.00	535,000.00

TOTAL AMOUNT OF BID FOR ENTIRE PROJECT

\$14,097,804.83

NCDOT Steel Price Adjustment Special Provision Highlights

Eligible Contract Line Items

- Seven Different Categories
 - Reinforcing Steel
 - Structural Steel and Encasement Pipe
 - Steel H-Piles, Soldier Pile Walls
 - Guardrail and Pipe Pile Items
 - Fence Items
 - Overhead Sign Assembly, Signal Poles, High Mount Standards
 - Prestressed Concrete Members

NCDOT Steel Price Adjustment Special Provision Highlights

For item numbers that include multiple types of steel products, the category listed for that item number will be used for adjusting each steel component.

Reinforcing Steel, Bridge Deck, and SIP Forms

Item Number	Long Description	Category
8147000000-E	REINFORCED CONCRETE DECK SLAB,	1
8154000000-E	REINFORCED CONCRETE DECK SLAB (SAND LIGHTWEIGHT CONC),	1
8210000000-N	BRIDGE APPROACH SLABS, STATION*****,	1
8217000000-E	REINFORCING STEEL (BRIDGE),	1
8224000000-E	EPOXY COATED REINFORCING STEEL(BRIDGE),	1
8226000000-E	EPOXY COATED SPIRAL COLUMN RE-INFORCING STEEL (BRIDGE),	1
8238000000-E	SPIRAL COLUMN REINFORCING STEEL (BRIDGE),	1
8503000000-E	CONCRETE BARRIER RAIL,	1
8504000000-E	CONCRETE BARRIER RAIL WITH MOMENT SLAB,	1
8505000000-E	VERTICAL CONCRETE BARRIER RAIL,	1
8510000000-E	CONCRETE MEDIAN BARRIER,	1
8063000000-N	PRECAST REINFORCED CONC BOX CULVERT AT STA *****,	1
8245000000-E	REINFORCING STEEL (CULVERT),	1
8248000000-E	EPOXY COATED REINFORCING STEEL(CULVERT),	1
2703000000-E	CONCRETE BARRIER, TYPE *****,	1
2710000000-N	CONCRETE BARRIER TRANSITION SECTION,	1
2717000000-E	VARIABLE HEIGHT CONCRETE BARRIER, TYPE *****,	1
4057000000-E	OVERHEAD FOOTING,	1
8252000000-E	REINFORCING STEEL (RETAINING WALL),	1
1847000000-E	***** PORT CEM CONC PAVEMENT,THROUGH LANES (WITH DOWELS),"	1
1858000000-E	***** PORT CEM CONC PAVEMENT,RAMPS (WITH DOWELS),"	1
1735000000-E	REPAIR OF JOINTED CONCRETE PAVEMENT SLABS,	1

Structural Steel and Encasement Pipe

Item Number	Long Description	Category
8111000000-E	PERMANENT STEEL CASINGS FOR **'-**" DIA DRILLED PIER	2
8111200000-E	PERMANENT STEEL CASINGS FOR 3'-0" DIA DRILLED PIER	2
8111400000-E	PERMANENT STEEL CASINGS FOR 3'-6" DIA DRILLED PIER	2
8111600000-E	PERMANENT STEEL CASINGS FOR 4'-0" DIA DRILLED PIER	2
8280000000-E	APPROX LBS STRUCTURAL STEEL,	2
5835000000-E	** ENCASEMENT PIPE,"	2
5835400000-E	6 ENCASEMENT PIPE,"	2
5835600000-E	12 ENCASEMENT PIPE,"	2
5835700000-E	16 ENCASEMENT PIPE,"	2
5835800000-E	18 ENCASEMENT PIPE,"	2
5835900000-E	20 ENCASEMENT PIPE,"	2
5836000000-E	24 ENCASEMENT PIPE,"	2
5836200000-E	30 ENCASEMENT PIPE,"	2
5836400000-E	36 ENCASEMENT PIPE,"	2

Steel H-Piles, Soldier Pile Walls

Item Number	Long Description	Category
8355000000-E	HP ***X*** STEEL PILES,	3
8356000000-E	HP**X** GALVANIZED STEEL PILES,	3
8357000000-E	HP10X42 STEEL PILES,	3
8364000000-E	HP12X53 STEEL PILES,	3
8365000000-E	HP12X53 GALVANIZED STEEL PILES,	3
8384000000-E	HP14X73 STEEL PILES,	3
8384200000-E	HP14X73 GALVANIZED STEEL PILES,	3
8378000000-E	HP12X53 STEEL PILES (RETAININGWALL),	3
8430000000-E	SHEET PILE RETAINING WALLS,	3
8802012000-E	PILE PANEL RETAINING WALLS,	3
8802014000-E	SOLDIER PILE RETAINING WALLS,	3

Guardrail and Pipe Piles Items

Item Number	Long Description	Category
838500000-E	PP ** X **** STEEL PILES,	4
838520000-E	PP ** X **** GALVANIZED STEEL PILES,	4
838600000-E	PP 18 X 0.50 STEEL PILES,	4
838700000-E	PP 18 X 0.50 GALVANIZED STEEL PILES,	4
848300000-E	32 ALASKA RAIL,"	4
848400000-E	42 OREGON RAIL,"	4
849600000-E	**** GALVANIZED STEEL PIPE RAIL,"	4
300000000-N	IMPACT ATTENUATOR UNIT, TYPE 350,	4
300100000-N	IMPACT ATTENUATOR UNITS, TYPE TL-3,	4
300150000-N	IMPACT ATTENUATOR UNITS, TYPE TL-2,	4
303000000-E	STEEL BEAM GUARDRAIL,	4
304500000-E	STEEL BEAM GUARDRAIL, SHOP CURVED,	4
306000000-E	STEEL BEAM GUARDRAIL, DOUBLE FACED,	4
307500000-E	TRIPLE CORRUGATED STEEL BM GUARDRAIL,	4
309000000-N	TRIPLE CORRUGATED STEEL BEAMGUARDRAIL TERMINAL SECTIONS,	4
310500000-N	STEEL BEAM GUARDRAIL TERMINAL SECTIONS,	4
312000000-E	20 TUBULAR TRIPLE CORRUGATEDSTEEL BEAM GUARDRAIL,"	4
313500000-N	W-TR STEEL BEAM GUARDRAILTRANSITION SECTIONS,	4
314000000-E	25' CLEAR SPAN GUARDRAIL SEC- TIONS,	4
314500000-E	EXTRA LENGTH GUARDRAIL POST (** STEEL),	4
315000000-N	ADDITIONAL GUARDRAIL POSTS,	4
316550000-N	GUARDRAIL END UNITS, TYPE *****,	4
319500000-N	GUARDRAIL END UNITS, TYPE AT-1,	4
321000000-N	GUARDRAIL END UNITS, TYPE CAT-1,	4
321500000-N	GUARDRAIL ANCHOR UNITS, TYPE III,	4
328700000-N	GUARDRAIL END UNITS, TYPE TL-3,	4
328800000-N	GUARDRAIL END UNITS, TYPE TL-2,	4
328900000-N	GUARDRAIL END UNITS, TYPE MEDIAN TL-3,	4
331700000-N	GUARDRAIL ANCHOR UNITS, TYPE B-77,	4
331900000-N	GUARDRAIL ANCHOR UNITS, TYPE B-83,	4
338920000-E	CABLE GUIDERAIL,	4
338940000-E	DOUBLE FACED CABLE GUIDERAIL,	4
338950000-N	ADDITIONAL GUIDERAIL POSTS,	4

Fence Items

Item Number	Long Description	Category
3500000000-E	WOVEN WIRE FENCE, ** FABRIC,"	5
3503000000-E	WOVEN WIRE FENCE, 47 FABRIC,"	5
3518000000-E	CHAIN LINK FENCE, ** FABRIC WITH REDWOOD PICKETS,"	5
3521000000-E	VINYL COATED CHAIN LINK FENCE, ** FABRIC WITH REDWOOD PIC-KETS,"	5
3524000000-E	VINYL COATED CHAIN LINK FENCE, ** FABRIC,"	5
3527000000-E	CHAIN LINK FENCE, ** FABRIC, GUARDRAIL MOUNTED,"	5
3530000000-E	CHAIN LINK FENCE, ** FABRIC WITH 1" MESH,"	5
3533000000-E	CHAIN LINK FENCE, ** FABRIC,"	5
3536000000-E	CHAIN LINK FENCE, 48 FABRIC,"	5
3539000000-E	METAL LINE POSTS FOR ** CHAINLINK FENCE,"	5
3542000000-E	METAL LINE POSTS FOR 48 CHAINLINK FENCE,"	5
3545000000-E	METAL TERMINAL POSTS FOR ** CHAIN LINK FENCE,"	5
3548000000-E	METAL TERMINAL POSTS FOR 48 CHAIN LINK FENCE,"	5
3551000000-E	METAL GATE POSTS FOR ** CHAINLINK FENCE, SINGLE GATE,"	5
3554000000-E	METAL GATE POSTS FOR ** CHAINLINK FENCE, DOUBLE GATE,"	5
4060000000-E	SUPPORTS, BREAKAWAY STEEL BEAM,	5
4066000000-E	SUPPORTS, SIMPLE STEEL BEAM,	5
4072000000-E	SUPPORTS, 3-LB STEEL U-CHANNEL,	5
4078000000-E	SUPPORTS, 2-LB STEEL U-CHANNEL,	5
4079000000-N	SUPPORTS, BARRIER (SMALL),	5
4080000000-N	SUPPORTS, BARRIER (LARGE),	5

Overhead Sign Assembly, Signal Poles, High Mount Standards

Item Number	Long Description	Category
5000000000-E	***' HIGH MOUNT STANDARD,	6
5005000000-E	80' HIGH MOUNT STANDARD,	6
5010000000-E	100' HIGH MOUNT STANDARD,	6
5015000000-E	120' HIGH MOUNT STANDARD,	6
5035000000-N	LIGHT STANDARDS, TYPE FRPS *****,	6
5040000000-N	LIGHT STANDARDS, TYPE FRPT *****,	6
5045000000-N	LIGHT STANDARDS, TYPE MTLs *****,	6
5050000000-N	LIGHT STANDARDS, TYPE MTLT *****,	6
5055000000-N	LIGHT STANDARDS, TYPE MISC *****,	6
5060000000-N	POST TOP STANDARD, TYPE AB *****,	6
5065000000-N	POST TOP STANDARD, TYPE EB *****,	6
7576000000-N	METAL STRAIN SIGNAL POLE,	6
7588000000-N	METAL POLE WITH SINGLE MAST ARM,	6
7590000000-N	METAL POLE WITH DUAL MAST ARM,	6
4080200000-E	SUPPORTS, STEEL SQUARE TUBE,	6
4082100000-N	SUPPORTS, OVERHEAD SIGN STRUCTURE AT STA *****,	6
4082110000-N	SUPPORTS, OVERHEAD DYNAMIC MESSAGE SIGN STRUCTURE AT STA *****,	6

Prestressed Concrete Members

Item Number	Long Description	Category
8256000000-E	TYPE III PRESRESSED CONCRETE DECK GIRDER,	7
8259000000-E	36 PRESTRESSED CONCRETE GIR- DERS,"	7
8262000000-E	45 PRESTRESSED CONCRETE GIR- DERS,"	7
8265000000-E	54 PRESTRESSED CONCRETE GIR- DERS,"	7
8268000000-E	63 PRESTRESSED CONCRETE GIR- DERS,"	7
8271000000-E	72 PRESTRESSED CONCRETE GIR- DERS,"	7
8274000000-E	MODIFIED 63 PRESTRESSED CONC GIRDERS,"	7
8277000000-E	MODIFIED 72 PRESTRESSED CONC GIRDERS,"	7
8329000000-E	12 PRESTRESSED CONCRETE PILES,"	7
8333000000-E	16 PRESTRESSED CONCRETE PILES,"	7
8336000000-E	20 PRESTRESSED CONCRETE PILES,"	7
8343000000-E	22 PRESTRESSED CONCRETE PILES,"	7
8350000000-E	24 PRESTRESSED CONCRETE PILES,"	7
8353000000-E	30 PRESTRESSED CONCRETE PILES,"	7
8752000000-E	CONCRETE BOX BEAMS,	7
8753000000-E	3'-0 X 2'-3" PRESTRESSED CONCBX BEAMS,"	7
8753100000-E	3'-0 X 2'-9" PRESTRESSED CONCBX BEAMS,"	7
8753200000-E	3'-0 X 3'-3" PRESTRESSED CONCBX BEAMS,"	7
8755000000-E	3'-0 X 1'-6" PRESTRESSED CONCCORED SLABS,"	7
8762000000-E	3'-0 X 1'-9" PRESTRESSED CONCCORED SLABS,"	7
8763000000-E	3'-0 X 2'-0" PRESTRESSED CONCCORED SLABS,"	7

NCDOT Steel Price Adjustment Special Provision Highlights

Establishing Base Price

Like Diesel Fuel and Asphalt Binder Provisions

The bidding index for Category 1 Steel items is \$XXX.XX per hundredweight.

The bidding index for Category 2 Steel items is \$XXX.XX per hundredweight.

The bidding index for Category 3 Steel items is \$XXX.XX per hundredweight.

The bidding index for Category 4 Steel items is \$XXX.XX per hundredweight.

The bidding index for Category 5 Steel items is \$XXX.XX per hundredweight.

The bidding index for Category 6 Steel items is \$XXX.XX per hundredweight.

The bidding index for Category 7 Steel items is \$XXX.XX per hundredweight.

The bidding index represents the selling price of steel based on Fastmarkets data for the month of MMMMMMM, 20YY.

NCDOT Steel Price Adjustment Special Provision Highlights

Price Adjustment Calculation

$$SPA = ((MI / BI) - 1) * BI * (Q / 100)$$

Where:

SPA= Steel Price Adjustment (in \$)

MI = Monthly Shipping Index (in \$ per cwt)

BI = Bidding Index (in \$ per cwt)

Q = Total Quantity of Steel (pounds)

NCDOT Steel Price Adjustment Special Provision Highlights

The Department will use a blend of monthly average prices as reported from the Fastmarkets platform to calculate the monthly adjustment indices (BI and MI).

- Indices will be calculated by the Department for the different categories
- Product Relationship Table

NCDOT Steel Price Adjustment Special Provision Highlights

<i>Product Relationship Table</i>			
<i>Steel Products</i>	BI, MI* Dollars per Hundredweight (\$ / cwt)	Adjustment Date for MI	Category
Reinforcing Steel, Bridge Deck, and SIP Forms	Based on one or more Fastmarkets indices	Delivery Date from Producing Mill	1
Structural Steel and Encasement Pipe	Based on one or more Fastmarkets indices	Delivery Date from Producing Mill	2
Steel H-Piles, Soldier Pile Walls	Based on one or more Fastmarkets indices	Delivery Date from Producing Mill	3
Guardrail and Pipe Piles Items	Based on one or more Fastmarkets indices	Material Received Date**	4
Fence Items	Based on one or more Fastmarkets indices	Material Received Date**	5
Overhead Sign Assembly, Signal Poles, High Mount Standards	Based on one or more Fastmarkets indices	Material Received Date**	6
Prestressed Concrete Members	Based on one or more Fastmarkets indices	Cast Date of Member	7
* BI and MI are in converted units of Dollars per Hundredweight (\$/CWT)			
** Material Received Date is defined as the date the materials are received on the project site. If a material prepayment is made for a Category 4-6 item, the Adjustment Date to be used will be the date of the prepayment request instead of the Materials Received Date.			

NCDOT Steel Price Adjustment Special Provision Highlights

Contractor Initial Submittal Requirement

- Select Eligible Items
- Complete Form SPA-1
 - Contract Line Number
 - Item Number
 - Description
 - Category
 - Option (writing “Yes” or “No”)
 - Choose Any, All, or None of the eligible items

NCDOT Steel Price Adjustment Special Provision Highlights

Initial Contractor Requirements

- Complete Form SPA-1
 - Items will be removed from consideration for adjustment, if:
 - Not Properly Designated
 - Designated with No
 - Or Option left blank on Form SPA-1

NCDOT Steel Price Adjustment Special Provision Highlights

Initial Contractor Requirements

- Select Eligible Items
 - Provide Form SPA-1 within 14 days of notice of contract award
 - Once Form SPA-1 is submitted, no changing
 - No steel items will be eligible if bidder fails to return form SPA-1 on time.

Contract Number	
TIP Number	
County and Route	

Bid Items Eligible for Steel Price Adjustment

Instructions: This form shall be completed in accordance the Special Provision. If you choose to have Steel Price Adjustments applied to any of the items listed below, write the word "Yes" in the "Option" column corresponding to the item. The form must be signed, dated, and submitted to the Contract Engineer within timeframe required by the Special Provision.

[illegible]

Line #	ItemNumber	Sec #	Description	Quantity Unit	Unit Bid Price	Amount Bid
0193	8217000000-E	425	REINFORCING STEEL (BRIDGE)	123,931 LB	1.10	136,324.10
0194	8238000000-E	425	SPIRAL COLUMN REINFORCING STEEL (BRIDGE)	20,957 LB	1.10	23,052.70
0195	8280000000-E	440	APPROX LBS STRUCTURAL STEEL	550,300 LS	1,196,000.00	1,196,000.00
0196	8475000000-E	460	TWO BAR METAL RAIL	844.18 LF	115.00	97,080.70
0197	8517000000-E	460	1'-***X ***** CONCRETE PARA-PET (1'-2" X 2'-6")	393.71 LF	125.00	49,213.75
0198	8517000000-E	460	1'-***X ***** CONCRETE PARA-PET (1'-2" X 3'-2 3/4")	505.38 LF	150.00	75,807.00
0199	8531000000-E	462	4" SLOPE PROTECTION	57 SY	125.00	7,125.00
0200	8608000000-E	876	RIP RAP CLASS II (2'-0" THICK)	67.3 TON	72.00	4,845.60
0201	8622000000-E	876	GEOTEXTILE FOR DRAINAGE	74.8 SY	10.00	748.00
0202	8654000000-N	SP	DISC BEARINGS	Lump Sum LS	90,000.00	90,000.00
0203	8706000000-N	SP	EXPANSION JOINT SEALS	Lump Sum LS	85,000.00	85,000.00
0204	8867000000-E	SP	GENERIC STRUCTURE ITEM MOMENT SLAB WITH SIDEWALK	102.75 LF	335.00	34,421.25
0205	8007000000-N	400	CONSTRUCTION, MAINTENANCE, & REMOVAL OF TEMP STRUCTURE AT STA ***** (13+30.84 -Y3- DET)	Lump Sum LS	535,000.00	535,000.00

TOTAL AMOUNT OF BID FOR ENTIRE PROJECT

\$14,097,804.83

NCDOT Steel Price Adjustment Special Provision Highlights

Contractor Submittal Requirements

- Complete Form SPA-2
 - Separate documentation package for each line item
 - Submitted prior to incorporation into work
- Department may withhold payment, if documentation not provided.
 - Progress payment made upon receipt of delinquent documentation.

NCDOT Steel Price Adjustment Special Provision Highlights

Contractor Monthly Submittal Requirements

- Form SPA-2 for each line item
 - Supplier
 - Description of Steel Material Component
 - Location Information
 - Quantity
 - Adjustment Date

NCDOT Steel Price Adjustment Special Provision Highlights

Contractor Monthly Submittal Requirements

- Form SPA-2 for each line item
- Label each SPA-2 package with unique submittal number
 - Line Item
 - Line Item Description
 - Sequential Package Number beginning with “1”

NCDOT Steel Price Adjustment Special Provision Highlights

Contractor Monthly Submittal Requirements

- Form SPA-2 for each line item
- Label each SPA-2 package with unique submittal number

Example:

- 237 – 1
- 237 – 2
- 193 - 1

Steel Price Adjustment Submission Form

Contract Number	C203394	Bid date	16-Jul-19
Submittal Date	8/31/2019		
Contract Line Item	237		
Line Item Description	Support, Overhead Sign Structure -DFEB- Sta 36+00		
Subsequential Submittal Number	2		

Supplier	Description of Material	Location information	Quantity in lbs.	Adjustment Date
XYZ Mill	Reinforcing Steel	-DFEB- Sta 36+00	12000	11-Dec-21
PDQ Mill	6.625" x 0.250" W. Pipe	-DFEB- Sta 36+01	5900	11-Dec-21
PDQ Mill	12.75" x 0.375" W. Pipe	-DFEB- Sta 36+02	1300	11-Dec-21
	14.0" x 0.375" W. Pipe	-DFEB- Sta 36+03	2000	11-Dec-21
	2.375" x 0.218" W. Pipe	-DFEB- Sta 36+04	2000	11-Dec-21
	4" x 0.225" W. Pipe	-DFEB- Sta 36+05	1500	11-Dec-21
	W5 x 9 3/8"	-DFEB- Sta 36+06	235	11-Dec-21
	Plate Steel 1/4" x 1' 3/4" dia	-DFEB- Sta 36+07	80	11-Dec-21
	Plate Steel 1/4" x 1' 2" dia	-DFEB- Sta 36+08	80	11-Dec-21
ABC Distributing	L 2" x 2" x 3/16"	-DFEB- Sta 36+09	180	11-Dec-21
Total pound of steel			25275	

Note: Attach the supporting documentation to this form.

By providing this data under my signature, I attest to the accuracy of and validity of the data on this form and certify that no deliberate misrepresentation in any manner has occurred.

Printed Name _____

Signature _____

NCDOT Steel Price Adjustment Special Provision Highlights

Contractor Monthly Submittal Requirements

Form SPA-2 shall include

- Steel product quantity in pounds
 - Precast or prestressed concrete item shall have total reinforcing steel weights listed on approved shop drawings

NCDOT Steel Price Adjustment Special Provision Highlights

Contractor Monthly Submittal Requirements
Form SPA-2 shall include

- Information regarding adjustment date
 - Shipped from the Producing Mill (Categories 1-3)
 - Received on project (Categories 4-6)
 - Cast data (Category 7)

NCDOT Steel Price Adjustment Special Provision Highlights

Contractor Monthly Submittal Requirements

- Monthly Calculator Spreadsheet
 - Contract Number
 - Letting date
 - Completion date
 - Project Information (TIP, Route, etc.)

NCDOT Steel Price Adjustment Special Provision Highlights

Contractor Monthly Submittal Requirements

- Monthly Calculator Spreadsheet
 - Contract Line Item
 - Line Item Description
 - Submittal Number (from Form SPA-2)
 - Adjustment date
 - Pounds of Steel
 - Affidavit signed by the Contractor stating spreadsheet is true and accurate

Draft Version of Steel Price Adjustment Calculator based on model from Ohio DOT.

Enter data in cells shaded yellow.

Contract Number
 Project letting (bid) date
 Current completion date (revised completion date)
 County- Route-TIP:

C987654
 7/18/2018
 12/31/2022
 Cumberland, I-95, U-9876

Date Calculated 3/16/2022
 Data Entered by: Project Manager

BI	Bidding Index, \$/CTW
35.50	Category 1 Steel Products
46.58	Category 2 Steel Products
42.70	Category 3 Steel Products
44.54	Category 4 Steel Products
38.94	Category 5 Steel Products
52.07	Category 6 Steel Products
36.93	Category 7 Steel Products

Make or Pay Item Number	Steel Product	Submittal Number	Adjustment Date	Pounds of Steel	Category	Mill Shipping Index MI \$/CWT	MI/BI	Eligible for SPA	Note	Steel Price Adjustment (SPA)
8280000000-E	APPROX LBS STRUCTURALSTEEL	424-1	1/28/2019	1,230	2	47.21	1.014	YES		\$ 7.75
8217000000-E	REINFORCING STEEL (BRIDGE),	425-1	1/29/2019	40565	1	35.5	1.000	YES		\$ -
5836000000-E	24 ENCASEMENT PIPE,"	88- 3	8/11/2019	3877.08	2	35.31	0.758	YES		\$ (436.95)
3140000000-E	25' CLEAR SPAN GUARDRAIL SEC- TIONS,	101- 1	1/31/2021	2800	4	53.4	1.199	YES		\$ 248.08
4066000000-E	SUPPORTS, SIMPLE STEEL BEAM,	225- 1	8/11/2019	3520	5	33.84	0.869	YES		\$ (179.52)
8280000000-E	APPROX LBS STRUCTURALSTEEL	424-2	2/2/2021	1560	2	51.02	1.095	YES		\$ 69.26
8224000000-E	EPOXY COATED REINFORCING STEEL(BRIDGE),	426-1	2/1/2019	16793	1	35.32	0.995	YES		\$ (30.23)
4082100000-N	SUPPORTS, OVERHEAD SIGN STRUC-TURE AT STA *****,	237-2	2/4/2021	6154.85	6	63.15	1.213	YES		\$ 681.96
8364000000-E	HP12X53 STEEL PILES,	412-2	7/11/2019	21850	3	37.65	0.882	YES		\$ (1,103.43)
8274000000-E	MODIFIED 63 PRESTRESSED CONC GIRDERS,"	400- 1	2/6/2020	2084	7	31.5	0.853	YES		\$ (113.16)
8147000000-E	REINFORCED CONCRETE DECK SLAB,	435 -1	5/5/2020	17854	1	29.21	0.823	YES		\$ (1,123.02)
					#N/A	#N/A	#N/A	#N/A	#N/A	\$ -
					#N/A	#N/A	#N/A	#N/A	#N/A	\$ -
					#N/A	#N/A	#N/A	#N/A	#N/A	\$ -
					#N/A	#N/A	#N/A	#N/A	#N/A	\$ -
					#N/A	#N/A	#N/A	#N/A	#N/A	\$ -
					#N/A	#N/A	#N/A	#N/A	#N/A	\$ -
					#N/A	#N/A	#N/A	#N/A	#N/A	\$ -
					#N/A	#N/A	#N/A	#N/A	#N/A	\$ -
					#N/A	#N/A	#N/A	#N/A	#N/A	\$ -

Total Steel Adjustment for Month \$ (1,979.25)

$$SPA = \left[\frac{MI}{BI} - 1.0 \right] \times BI \times Q / 100, \text{ where } Q \text{ is in pounds.}$$

NCDOT Steel Price Adjustment Special Provision Highlights

- Any apparent attempt to unbalance bids in favor of items subject to price adjustment may result in rejection of the bid proposal.
- Adjustments will be paid or charged to the Contractor only. Any Contractor receiving an adjustment under this provision shall distribute the proper proportional part of such adjustments to the subcontractor who performed the applicable work.

NCDOT Steel Price Adjustment Special Provision Highlights

- If an Increase in steel material price is anticipated to exceed 50% of original quoted price:
- Contractor shall notify Department within 7 days prior to purchasing the material.
- Department will direct Contractor:
 - Proceed with work, or
 - Suspend the work and explore the use of alternate options.

NCDOT Steel Price Adjustment Special Provision Highlights

- If a Decrease in steel material exceeds 50% of original quoted price:
- Contractor may submit additional market index information to dispute the decrease.
- Department will review information and determine if the decrease is warranted

NCDOT Steel Price Adjustment Special Provision Highlights

- When steel product adjustment date is after approved contract completion date, the steel price adjustment will be based on lesser value of
 - MI for the month of the approved completion date,
 - MI for the actual adjustment date

NCDOT Steel Price Adjustment Special Provision Highlights

Extra Work (104-7 or 104-3)

- Engineer will determine and specify in the SA the need for a steel price adjustment on case by case basis
- Price adjustments will be made as provided in provision, except BI will be based on month the SA was executed.

NCDOT Steel Price Adjustment Special Provision Highlights

Force Account Work

- Reimbursement of actual material cost
- No steel price adjustment will be made.

NCDOT Steel Price Adjustment Special Provision Highlights

- Does not cover all items (Nuts, bolts, rebar chairs, connecting bands and miscellaneous hardware is not included)

NCDOT Steel Price Adjustment Special Provision Highlights

Resident Engineer's requirements

- Verify line items contractor has opted for steel price adjustment
- Verify Material Weights and Dates
- Ensure submissions are complete before processing each monthly estimate

NCDOT Steel Price Adjustment Special Provision Highlights

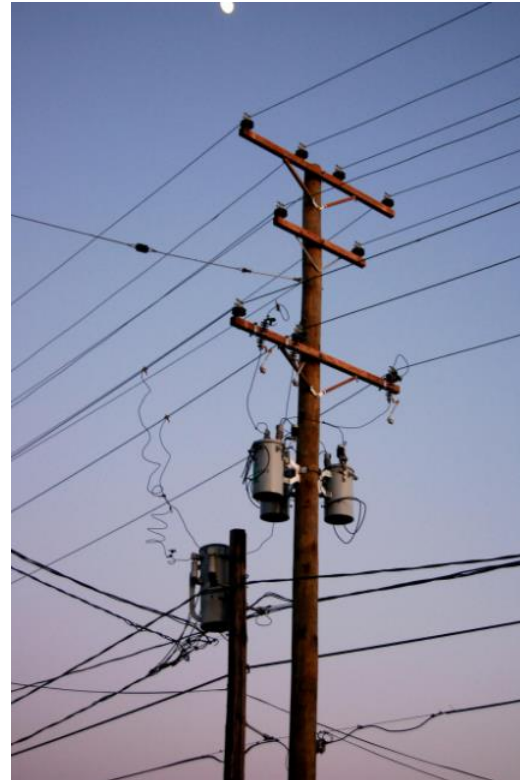
What projects will the provision be included?

Workgroup still discussing...

- Projects with an overall contract duration of 18 months or more. (12 months for ICT # 1 + 6 months vegetation establishment)
- Centrally let projects

AGC/NCDOT Utilities Workgroup

- Includes CAGC members, Division Staff, Utilities Unit Staff, and CCU Staff
- Focus on timely utility relocation on bid-build and design-build projects
- Ideas generated include:
 - Increasing Utility Owner Accountability
 - Incorporation of Private Dry Utility Work Into Contracts
 - Design Build Teams Handling Utility Design
 - Improve As-Built Plan Process for Wet Utility
- NCDOT Utilities Unit Currently Exploring Implementation of Workgroup Recommendations



AGC/NCDOT/CSX Railroad Workgroup

- Includes CAGC members, CSX, Rail Division, Structure Design, and CCU Staff
- CSX Requested to Discuss Flagging Needs
- Topics of Discussion
 - Design to Minimize Flagging Needs
 - Clarifying Submittal Processes
 - Phase Work to Minimize Flagging
 - Incentive/Disincentive for Use of Flaggers
 - Flagger Sharing Between Projects



AGC/ACEC/NCDOT Design Build Noise Wall Workgroup

- Discuss Noise Wall Scope of Work and Compensation
- Base Quantity for Noise Walls
- Compensation above Base Quantity
- Proposed Solutions
 - Use TNR Quantity for Base Quantity in RFP
 - Establish Fixed Pricing for Quantity Above Base Quantity
 - Unit Price for Walls in Cut Section and Price for Walls in Fill Section
 - NCDOT Updating Noise Wall Guidance

