

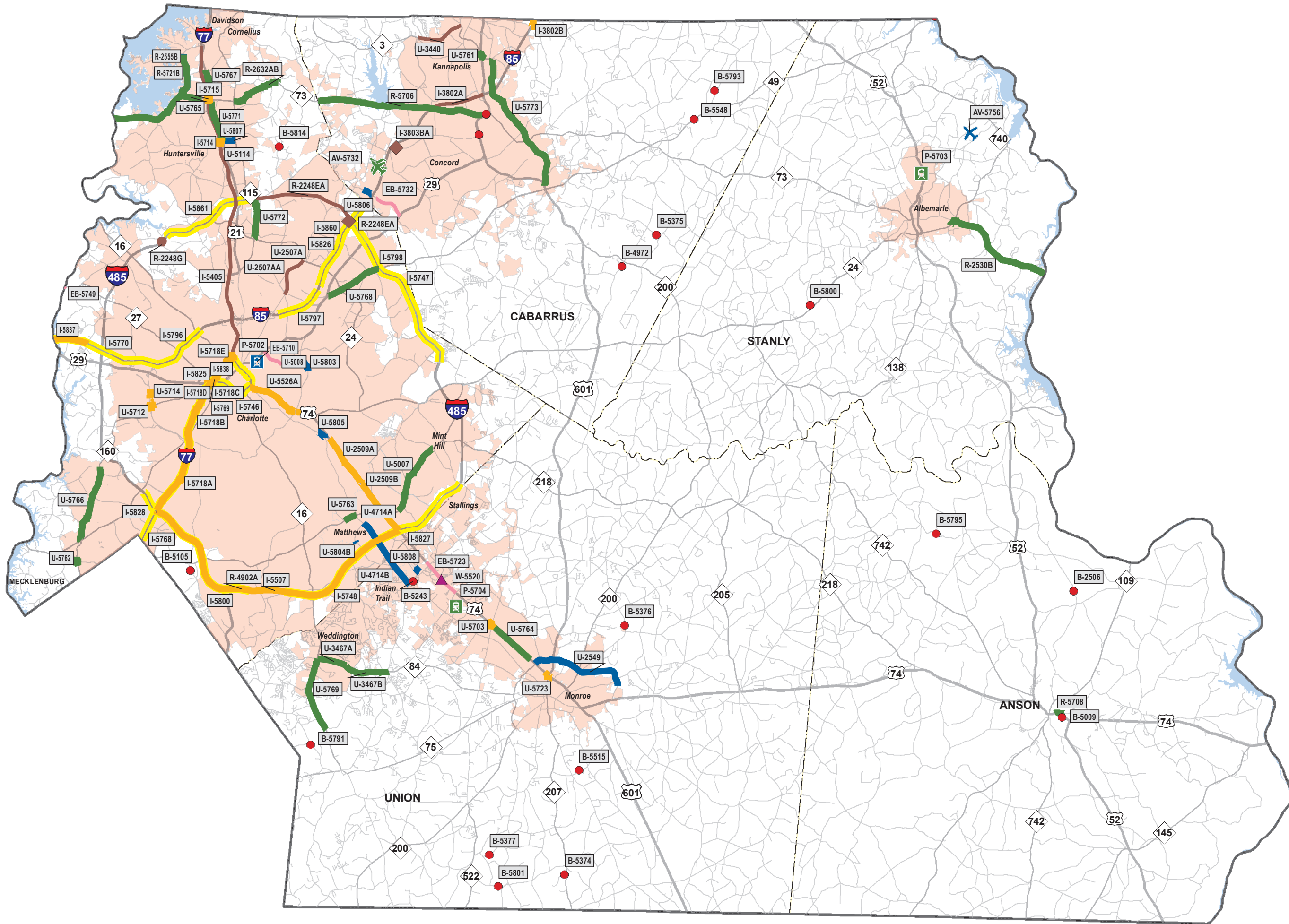
**STATE TRANSPORTATION
IMPROVEMENT PROGRAM**

Division 10

Anson
Cabarrus
Mecklenburg
Stanly
Union

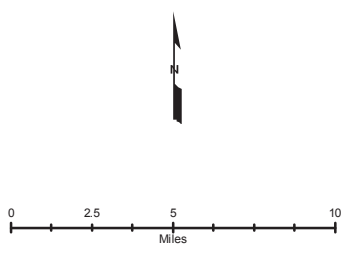
DRAFT STIP FY 2015-2025 STI Projects

DIVISION 10



- BRIDGES FUNDED THROUGH STI
- ✕ STATEWIDE AVIATION
- ✕ REGIONAL AVIATION
- ✕ DIVISION AVIATION
- ⚓ DIVISION FERRY
- 🚆 REGIONAL RAIL
- 🚆 DIVISION RAIL
- 🚆 REGIONAL TRANSIT
- 🚆 DIVISION TRANSIT
- ▲ SAFETY
- ◆ TRANSITION *
- ◆ TRANSITION *
- ▬ INTERSTATE MAINTENANCE
- ▬ STATEWIDE HIGHWAY
- ▬ REGIONAL HIGHWAY
- ▬ DIVISION HIGHWAY
- ▬ DIVISION BIKE/PEDESTRIAN
- ▬ INTERSTATE ROUTE
- ▬ US ROUTE
- ▬ NC ROUTE
- ▬ SECONDARY ROAD
- ▭ MUNICIPAL BOUNDARIES
- ▭ MILITARY BASE
- ▭ NCDOT DIVISION BOUNDARY
- ▭ COUNTY BOUNDARY
- ▭ WATER FEATURES

* Note: Reflects 108 of the Major Transition Projects
 Note: FY 2015 projects represent major projects not let as of November 2014



HIGHWAY PROGRAM

DIVISION 10

COUNTY	ROUTE/CITY	ID NUMBER	LOCATION / DESCRIPTION	LENGTH	TOTAL PROJ COST (THOU)	PRIOR YEARS COST (THOU)	FUNDS	FY 2015	TYPE OF WORK / ESTIMATED COST IN THOUSANDS / PROJECT BREAKS											UNFUNDED FUTURE YEARS
									STATE TRANSPORTATION PROGRAM					DEVELOPMENTAL PROGRAM						
									FY 2016	FY 2017	FY 2018	FY 2019	FY 2020	FY 2021	FY 2022	FY 2023	FY 2024	FY 2025		
CONGESTION MITIGATION PROJECTS																				
CABARRUS	US 601 NC 24/NC 27	C-5503	US 601 AND NC 24/NC 27 IN MIDLAND. CONSTRUCT SIDEWALKS.		140				CMAQ	PE	11									
									L	PE	3									
									CMAQ	C	101									
									L	C	25									
		EX																		
CABARRUS ROWAN	VARIOUS	C-5603	PROJECTS TO IMPROVE CONGESTION AND AIR QUALITY IN THE CABARRUS-ROWAN MPO.		3268				C		1634									
		EX																		
CABARRUS	VARIOUS	C-4918	INTERSECTION IMPROVEMENTS AND ADDITIONAL TURN LANES AT SELECTED LOCATIONS IN CONCORD.		2063	1236			CMAQ	C	662	A								
		EX							L	C	165	A								
									EX A SR 1394 (POPLAR TENT ROAD) - INTERSECTION IMPROVEMENTS - RIGHT OF WAY IN PROGRESS											
									EX B NC 3 - ADDITIONAL TURN LANES - UNDER CONSTRUCTION											
CABARRUS	VARIOUS	C-4916	CONSTRUCT SIDEWALKS AT SELECTED LOCATIONS IN KANNAPOLIS.		1091	407			CMAQ	R	98	C								
		EX							L	R	25	C								
									CMAQ	C	449	C								
									L	C	112	C								
		EX							EX A HUDSON STREET TO SOUTH CANNON BOULEVARD - UNDER CONSTRUCTION											
									EX B FUNDS TRANSFERRED TO C-4918B											
									EX C WINDSOR DRIVE TO ROGERS LAKE ROAD											
									PLANNING / DESIGN / RIGHT OF WAY / CONSTRUCTION BY CITY OF KANNAPOLIS											
CABARRUS GASTON IREDELL LINCOLN MECKLENBURG ROWAN UNION	CHARLOTTE	C-5536	MECKLENBURG COUNTY AIR QUALITY - GRADE (GRANTS TO REPLACE AGING DIESEL ENGINES). REPLACE, REPOWER OR RETROFIT AGING DIESEL VEHICLES AND EQUIPMENT.		500	500														
		EX																		
									IN PROGRESS											
CABARRUS	CONCORD	C-5155	RIDER TRANSIT - OPERATIONAL ASSISTANCE FOR SUNDAY SERVICE IN CONCORD.																	
		EX																		
									FUNDS FLEXED TO PUBLIC TRANSPORTATION PROGRAM TO-5138											
CABARRUS	CONCORD	C-5557	CITY OF CONCORD'S NE SUBSET SIDEWALKS. INSTALL SIDEWALKS AT VARIOUS LOCATIONS.		525				CMAQ	C	420									
		EX							L	C	105									
CABARRUS	CONCORD	C-4919	CONSTRUCT MCEACHERN GREENWAY CONNECTOR TO DOWNTOWN CORBAN PARK IN CONCORD.		313	313														
		EX																		
									UNDER CONSTRUCTION											
CABARRUS	HARRISBURG	C-5157	CONSTRUCT SIDEWALKS ON TOM QUERY ROAD, ROBINSON CHURCH ROAD AND STALLINGS ROAD IN HARRISBURG.		564				CMAQ	PE	73									
		EX							L	PE	18									
									C		378									
									L		95									
CABARRUS	HARRISBURG	C-4921	CONSTRUCT SIDEWALKS TO CONNECT NEIGHBORHOODS AND TOWN CENTER IN HARRISBURG.		300	300														
		EX																		
									UNDER CONSTRUCTION											
CABARRUS	KANNAPOLIS	C-5159	ROXIE STREET, NC 3 AND DALE EARNHARDT BOULEVARD IN KANNAPOLIS. STREET IMPROVEMENTS.		675				CMAQ			PE	108							
		EX							L			PE	27							
									CMAQ			C	432							
									L			C	108							

DIV - Division Category **EX - Exempt Category**
HF - State Dollars (Non STI) **REG - Regional Category**
SW - Statewide Category **TRN - Transition Project**

COST AND SCHEDULES ARE PRELIMINARY AND SUBJECT TO
SIGNIFICANT CHANGE AS MORE INFORMATION BECOMES
AVAILABLE

HIGHWAY PROGRAM

DIVISION 10

COUNTY	ROUTE/CITY	ID NUMBER	LOCATION / DESCRIPTION	LENGTH	TOTAL PROJ COST (THOU)	PRIOR YEARS COST (THOU)	FUNDS	FY 2015	TYPE OF WORK / ESTIMATED COST IN THOUSANDS / PROJECT BREAKS										UNFUNDED FUTURE YEARS
									STATE TRANSPORTATION PROGRAM					DEVELOPMENTAL PROGRAM					
									FY 2016	FY 2017	FY 2018	FY 2019	FY 2020	FY 2021	FY 2022	FY 2023	FY 2024	FY 2025	
URBAN PROJECTS																			
MECKLENBURG UNION	VARIOUS	U-4950	MECKLENBURG-UNION METROPOLITAN PLANNING ORGANIZATION (MUMPO) PLANNING (PL) SUPPLEMENT.		11000				STPDA PE 800 L PE 200	PE 800 PE 200	PE 800 PE 200	PE 800 PE 200	PE 800 PE 200	PE 800 PE 200	PE 800 PE 200				
FORMERLY U-9999C - IN PROGRESS																			
IREDELL MECKLENBURG UNION	VARIOUS	U-4744	STP-DA IN MECKLENBURG-UNION METROPOLITAN PLANNING ORGANIZATION (MUMPO).		182675				STPDA C 11300 L C 2825	C 13605 C 3401	C 9235 C 2309	C 14000 C 3500	C 14000 C 3500	C 14000 C 3500	C 14000 C 3500	C 14000 C 3500			
MECKLENBURG	CHARLOTTE	U-5133	UPGRADE-EXPAND TRAFFIC SIGNAL AND MANAGEMENT SYSTEM IN CHARLOTTE.		3914	3914													
A VARIOUS - UNDER CONSTRUCTION B NC 51 - UNDER CONSTRUCTION C TRADE STREET - UNDER CONSTRUCTION D UNIVERSITY AREA (NORTH TRYON STREET, W.T. HARRIS AND NC 49) - UNDER CONSTRUCTION																			
MECKLENBURG	CHARLOTTE	U-5507	CONSTRUCT NORTHWEST ARC OF THE I-485/PROSPERITY CHURCH ROAD INTERCHANGE IN CHARLOTTE.		10150	3050			STPDA C 1100 A L C 1420 A STPDA C 2000 B L C 2580 B										
TRN A I-485 TO RIDGE ROAD. - RIGHT OF WAY IN PROGRESS TRN B RIDGE ROAD TO PROSPERITY CHURCH ROAD. - RIGHT OF WAY IN PROGRESS																			
PROJECT TO BE ADMINISTERED BY THE CITY OF CHARLOTTE																			
MECKLENBURG	CHARLOTTE	U-5107	CONSTRUCT TRANSPORTATION IMPROVEMENTS AT THE MARION DIEHL CENTER (QUEENS UNIVERSITY) IN CHARLOTTE.		780				HP C 624 O C 156										
CONSTRUCTION BY OTHERS																			
MECKLENBURG	CHARLOTTE	U-4911	BELMONT NEIGHBORHOOD INFRASTRUCTURE AND STREETSCAPE IMPROVEMENTS IN CHARLOTTE.		1230	1230													
UNDER CONSTRUCTION - BY CITY OF CHARLOTTE																			
MECKLENBURG	HUNTERSVILLE	U-5114	INTERSECTION OF US 21 AND GILEAD ROAD IN HUNTERSVILLE. CONSTRUCT INTERSECTION IMPROVEMENTS, INCLUDING BICYCLE AND PEDESTRIAN ACCOMMODATIONS.		4600				L R 100 STPDA L	C 3600 C 900									
PROJECT TO BE ADMINISTERED BY THE TOWN OF HUNTERSVILLE																			
MECKLENBURG	MATTHEWS	U-5511	INTERSECTION OF NC 51 AND MATTHEWS-MINT HILL ROAD. CONSTRUCT A SUPERSTREET.		758	100			DP C 526 L C 132										
FY 2011 TRANSPORTATION AND COMMUNITY AND SYSTEM PRESERVATION (TCSP) PROJECT																			
MECKLENBURG	MATTHEWS MINT HILL	U-5115	INTERSECTION OF NC 51 AND IDLEWILD ROAD. CONSTRUCT INTERSECTION IMPROVEMENTS.		1625				STPDA R 100 L R 25 STPDA C 1200 L C 300										
PROJECT TO BE ADMINISTERED BY THE TOWNS OF MATTHEWS AND MINT HILL																			
MECKLENBURG	NORTH COMMUNITY HOUSE ROAD	U-5519	NORTH COMMUNITY HOUSE ROAD EXTENSION AND BRIDGE ACROSS I-485.	1.2	8600				O R 100 O C 8500										
PROJECT TO BE ADMINISTERED BY THE TOWN OF CORNELIUS																			
MECKLENBURG	NORTHCROSS DRIVE EXTENSION	U-5108	END OF NORTHCROSS DRIVE TO WESTMORELAND ROAD IN CORNELIUS. CONSTRUCT ROAD ON NEW LOCATION.		8232				STPDA R 955 L R 421 STPDA L	C 4765 C 2091									

DIV - Division Category **EX - Exempt Category**
HF - State Dollars (Non STI) **REG - Regional Category**
SW - Statewide Category **TRN - Transition Project**

COST AND SCHEDULES ARE PRELIMINARY AND SUBJECT TO SIGNIFICANT CHANGE AS MORE INFORMATION BECOMES AVAILABLE

HIGHWAY PROGRAM

DIVISION 10

COUNTY	ROUTE/CITY	ID NUMBER	LOCATION / DESCRIPTION	LENGTH	TOTAL PROJ COST (THOU)	PRIOR YEARS COST (THOU)	FUNDS	FY 2015	TYPE OF WORK / ESTIMATED COST IN THOUSANDS / PROJECT BREAKS										UNFUNDED FUTURE YEARS
									STATE TRANSPORTATION PROGRAM					DEVELOPMENTAL PROGRAM					
									FY 2016	FY 2017	FY 2018	FY 2019	FY 2020	FY 2021	FY 2022	FY 2023	FY 2024	FY 2025	
FEASIBILITY STUDIES																			
MECKLENBURG	I-77	FS-0810A	I-77, SOUTH CAROLINA LINE TO 5TH STREET IN CHARLOTTE. ADD ADDITIONAL LANES.	11															
FEASIBILITY STUDY IN PROGRESS																			
MECKLENBURG	I-77 I-85	FS-1210A	CONSTRUCT IMPROVEMENTS TO THE I-77/I-85 INTERCHANGE.																
SCHEDULED FOR FEASIBILITY STUDY																			
FEDERAL BRIDGE PROJECTS																			
MECKLENBURG	US 29 (SOUTH AND NORTHBOUND LANES)	B-4779 REG	REPLACE BRIDGE NO. 147 (SBL) AND BRIDGE NO. 140 (NBL) OVER MALLARD CREEK.		6688	6688													
UNDER CONSTRUCTION																			
MECKLENBURG	NC 16 SOUTHBOUND	B-5792 HF	REPLACE BRIDGE NO. 342 OVER ANDRILL TERRACE STREET AND IRWIN CREEK.		6860	150	HFB HFB							R	610				
MECKLENBURG	SR 1138 WEST (ARROWOOD ROAD)	B-5803 HF	REPLACE BRIDGE NO. 01 OVER SUGAR CREEK.		2970		HFB HFB							R	270				
															C	2700			
MECKLENBURG	SR 1155 (DIXIE RIVER ROAD)	B-5789 HF	REPLACE BRIDGE NO. 165 OVER COFFEY CREEK.		1320		HFB HFB							R	120				
															C	1200			
MECKLENBURG	SR 2442 (ASBURY CHURCH ROAD)	B-5814 DIV	REPLACE BRIDGE NO. 90 OVER SOUTH PRONG OF CLARKS CREEK.		1155		STPOFF STPOFF								R	55			
																C	1100		
MECKLENBURG	SR 2826	BK-5114 DIV	REPLACE BRIDGE NO. 59 OVER REEDY CREEK.		670	670													
UNDER CONSTRUCTION - BRIDGE PURCHASE ORDER CONTRACT (BPOC)																			
MECKLENBURG	SR 3168 (NEWELL ROAD)	B-4201 DIV	REPLACE BRIDGE NO. 38 OVER GREASY CREEK.		1949	1949													
UNDER CONSTRUCTION																			
MECKLENBURG	SR 4982 (SOUTH POLK STREET)	B-5105 DIV	REPLACE BRIDGE NO. 49 OVER LITTLE SUGAR CREEK.		3427	727	NHPB C	2700											
RIGHT OF WAY IN PROGRESS																			
ANSON CABARRUS MECKLENBURG STANLY UNION	VARIOUS	BD-5110 DIV	DIVISION 10 PURCHASE ORDER CONTRACT BRIDGE REPLACEMENT PROJECTS AT SELECTED LOCATIONS.		18292	16292	STPOFF STPOFF	R C	200 1800										
PART UNDER CONSTRUCTION - BRIDGE PURCHASE ORDER CONTRACT (BPOC)																			
MUNICIPAL BRIDGE PROJECTS																			
MECKLENBURG	BARRINGER DRIVE	B-5242 DIV	REPLACE BRIDGE NO. 376 OVER IRWIN CREEK IN CHARLOTTE.		2175	160	STPOFF L STPOFF L	R R	12 3										
										C	1600								
										C	400								
PROJECT ADMINISTERED BY CITY OF CHARLOTTE - MUNICIPAL BRIDGE																			

DIV - Division Category **EX - Exempt Category**
HF - State Dollars (Non STI) **REG - Regional Category**
SW - Statewide Category **TRN - Transition Project**

HIGHWAY PROGRAM

DIVISION 10

COUNTY	ROUTE/CITY	ID NUMBER	LOCATION / DESCRIPTION	LENGTH	TOTAL PROJ COST (THOU)	PRIOR YEARS COST (THOU)	FUNDS	FY 2015	TYPE OF WORK / ESTIMATED COST IN THOUSANDS / PROJECT BREAKS												
									STATE TRANSPORTATION PROGRAM					DEVELOPMENTAL PROGRAM					UNFUNDED		
									FY 2016	FY 2017	FY 2018	FY 2019	FY 2020	FY 2021	FY 2022	FY 2023	FY 2024	FY 2025	FUTURE YEARS		
CONGESTION MITIGATION PROJECTS																					
UNION	MARSHVILLE	C-4973 EX	ROCKY RIVER RPO TO PROVIDE FUNDING FOR TWO-YEARS FOR OUTREACH AND MARKETING TO SUPPORT EXPANDED 74X CATS EXPRESS BUS SERVICE TO MARSHVILLE. CMAQ FUNDS TRANSFERRED TO FTA.		4	4															
IN PROGRESS																					

DIV - Division Category	EX - Exempt Category
HF - State Dollars (Non STI)	REG - Regional Category
SW - Statewide Category	TRN - Transition Project

