

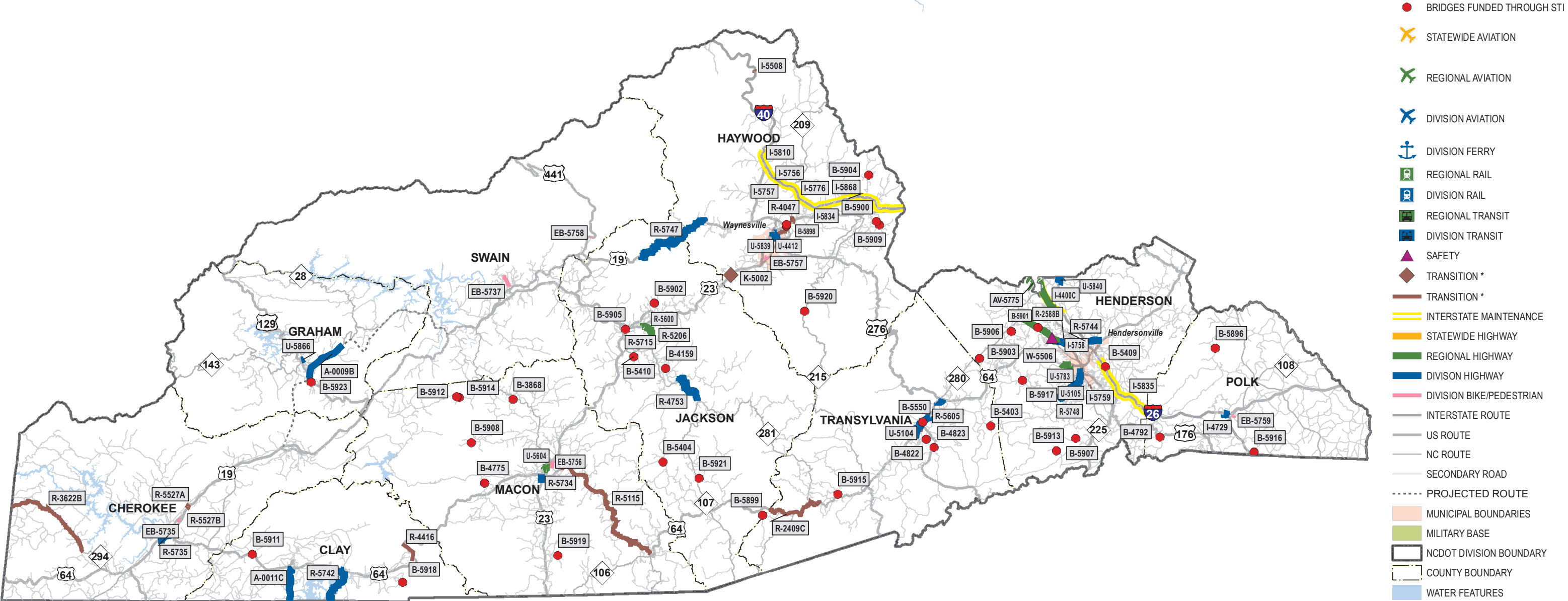
STATE TRANSPORTATION IMPROVEMENT PROGRAM

Division 14

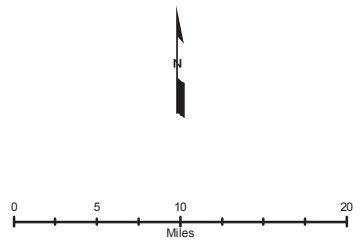
Cherokee
Clay
Graham
Haywood
Henderson
Jackson
Macon
Polk
Swain
Transylvania

DRAFT STIP
FY 2015-2025
STI Projects

DIVISION 14



* Note: Reflects 108 of the Major Transition Projects
Note: FY 2015 projects represent major projects not let as of November 2014



DIVISION 00

HIGHWAY PROGRAM

TYPE OF WORK / ESTIMATED COST IN THOUSANDS / PROJECT BREAKS

[illegible][illegible]

ROUTE/CITY
I - Interstate
US or NC Routes
SR - Secondary Road
Various - multiple routes
NEW ROUTE or City /

IDENTIFICATION NUMBER
Assigned to each project at
conception and remains with
project until completion.

ON

LOCATION / DESCRIPTION	PROJECT TERMINI AND A GENERAL WORK DESCRIPTION.

FUNDING SOURCE (2)

See Highway Funding Key for an explanation of funding categories used for each project phase.

FUNDING CATEGORY (1)

Identifies the "STI" Funding Category for the project and any project breaks.

SW A I-40 TO NC 3
SW B NC 3 TO SR 1003
SW C SR 1003 TO NC 96

PROJECT BREAKS
One or two letter designation for project break.

WORK TYPE (ACTIVITY) (3)

Phases of implementation:
Preliminary engineering, Right of Way,
Mitigation, Utilities or Construction.
For other work types or activities see
Work Type (Activity) box below.

ESTIMATED COST

way, utility, mitigation and construction cost estimates by funding category in current dollars. Cost may include one or more funding types. Multi-year funding of a project segment indicates **(Cash-Flow Funding)** with proposed work type or activity beginning in the initial scheduled year. (Estimates are in thousand of dollars.)

**UNFUNDED
FUTURE
COMMITMENTS**

(1) FUNDING CATEGORY	
DIV	- Division
EX	- Exempt
HF	- State Dollars (Non-STI)
REG	- Regional
SW	- Statewide
TRN	-Transition Project

(2) FUNDING KEY FOR HIGHWAY FUNDING SOURCES	
APD - Appalachian Development	NHPB - National Highway Performance Program (Bridge)
BOND (R) - Revenue Bond	NHPIM - National Highway Performance Program (Interstate Maintenance)
CMAQ - Congestion Mitigation	O - Others
DP - Discretionary or Demonstration	RR - Rail-Highway Safety
ER - Emergency Relief Funds	S (M) - State Match
FED - Federal Rail Funds	SRTS - Safe Routes to School
FLPI - Federal Lands Program (Indian Reservation Roads)	STP - Surface Transportation Program
HFB - Highway Fund Bridge Replacement Program	STPDA - Surface Transportation Program - Direct Attributable
HP - Federal-Aid High Priority	STPEB - Surface Transportation Program, Enhancements (Bike)
HSRRR - High Risk Rural Roads	STPON - Surface Transportation Program Bridge (On System Bridge)
HSIP - Highway Safety Improvement Program	STPOFF - Surface Transportation Program (Off System Bridge)
L - Local	T - State Highway Trust Funds
NHP - National Highway Performance Program	TAP - Transportation Alternatives Program

(3) WORK TYPE (ACTIVITY)

A - Acquisition
C - Construction
CG - Construction (GARVEE)
F - Feasibility Study
G - Grading and Structures
I - Implementation
L - Landscaping
M - Mitigation
O - Operations
P - Paving
PE - Preliminary Engineering
R - Right of Way
RG - Right of Way (GARVEE)
S - Structure
U - Utilities

										TYPE OF WORK / ESTIMATED COST IN THOUSANDS / PROJECT BREAKS																																																																																																																																																																																																																																																																																																																																																																																																																																																																																																																																																																																																																																																																																																																																																																																																																																																																																																																																																																																																																																																																																																																																																																																																																																																																																										
COUNTY	ROUTE/CITY	ID NUMBER	LOCATION / DESCRIPTION	LENGTH	TOTAL PROJ COST (THOU)	PRIOR YEARS COST (THOU)	FUNDS	FY 2015	STATE TRANSPORTATION PROGRAM					DEVELOPMENTAL PROGRAM					UNFUNDED																																																																																																																																																																																																																																																																																																																																																																																																																																																																																																																																																																																																																																																																																																																																																																																																																																																																																																																																																																																																																																																																																																																																																																																																																																																																																	
									FY 2016	FY 2017	FY 2018	FY 2019	FY 2020	FY 2021	FY 2022	FY 2023	FY 2024	FY 2025	FUTURE YEARS																																																																																																																																																																																																																																																																																																																																																																																																																																																																																																																																																																																																																																																																																																																																																																																																																																																																																																																																																																																																																																																																																																																																																																																																																																																																																	
RURAL PROJECTS																																																																																																																																																																																																																																																																																																																																																																																																																																																																																																																																																																																																																																																																																																																																																																																																																																																																																																																																																																																																																																																																																																																																																																																																																																																																																																				
CHEROKEE	US 19/US 74/ US 64/US 129	R-5735	END OF 4-LANE DIVIDED SECTION TO SR 1556 (MARTINS CREEK ROAD). IMPROVE ROADWAY.	1.2	11360																																																																																																																																																																																																																																																																																																																																																																																																																																																																																																																																																																																																																																																																																																																																																																																																																																																																																																																																																																																																																																																																																																																																																																																																																																																																																															</

DIV - Division CategoryEX - Exempt Category
HF - State Dollars (Non STI)REG - Regional Category
SW - Statewide CategoryTRN - Transition Project

										TYPE OF WORK / ESTIMATED COST IN THOUSANDS / PROJECT BREAKS																				
COUNTY	ROUTE/CITY	ID NUMBER	LOCATION / DESCRIPTION	LENGTH	TOTAL PROJ COST (THOU)	PRIOR YEARS COST (THOU)	FUNDS	FY 2015	STATE TRANSPORTATION PROGRAM					DEVELOPMENTAL PROGRAM					UNFUNDED											
									FY 2016	FY 2017	FY 2018	FY 2019	FY 2020	FY 2021	FY 2022	FY 2023	FY 2024	FY 2025	FUTURE YEARS											
FEDERAL BRIDGE PROJECTS																														
CHEROKEE	SR 1548 (OLD HIGHWAY 64)	B-5925	REPLACE BRIDGE NO. 223 OVER HIWASSEE RIVER.		2860		HFB																							
							HFB																							
		HF																												
CHEROKEE	VARIOUS	BD-5114	DIVISION 14 PURCHASE ORDER CONTRACT BRIDGE REPLACEMENT PROJECTS AT SELECTED LOCATIONS.		17255	15255	STPOFF	R	200																					
CLAY							STPOFF	C	1800																					
GRAHAM																														
HAYWOOD																														
HENDERSON																														
JACKSON																														
MACON																														
POLK																														
SWAIN																														
TRANSYLVANIA																														
								DIV																						
PART UNDER CONSTRUCTION - BRIDGE PURCHASE ORDER CONTRACT (BPOC)																														
MITIGATION PROJECTS																														
CHEROKEE	VARIOUS	EE-4914	ECOSYSTEM ENHANCEMENT PROGRAM FOR DIVISION 14 PROJECT MITIGATION.		18871	18871																								
CLAY																														
GRAHAM																														
HAYWOOD																														
HENDERSON																														
JACKSON																														
MACON																														
POLK																														
SWAIN																														
TRANSYLVANIA																														
IN PROGRESS																														
HAZARD ELIMINATION PROJECTS																														
CHEROKEE	VARIOUS	W-5214	DIVISION 14 RUMBLE STRIPS, GUARDRAIL, SAFETY AND LIGHTING IMPROVEMENTS AT SELECTED LOCATIONS.		3128	3128																								
CLAY																														
GRAHAM																														
HAYWOOD																														
HENDERSON																														
JACKSON																														
MACON																														
POLK																														
SWAIN																														
TRANSYLVANIA																														
IN PRGRESS - DIVISION PURCHASE ORDER CONTRACT (DPOC)																														

										TYPE OF WORK / ESTIMATED COST IN THOUSANDS / PROJECT BREAKS											
COUNTY	ROUTE/CITY	ID NUMBER	LOCATION / DESCRIPTION	LENGTH	TOTAL PROJ COST (THOU)	PRIOR YEARS COST (THOU)	FUNDS	FY 2015	STATE TRANSPORTATION PROGRAM					DEVELOPMENTAL PROGRAM					UNFUNDED		
									FY 2016	FY 2017	FY 2018	FY 2019	FY 2020	FY 2021	FY 2022	FY 2023	FY 2024	FY 2025	FUTURE YEARS		
ENHANCEMENT (CALL PROJECTS)																					
ALLEGHANY	VARIOUS	E-4975	BLUE RIDGE NATIONAL HERITAGE SITES.		576	576															
ASHE			INTERPRETATIVE AND GATEWAY MARKERS.																		
AVERY																					
BUNCOMBE																					
BURKE																					
CALDWELL																					
CHEROKEE																					
CLAY																					
GRAHAM																					
HAYWOOD																					
HENDERSON																					
JACKSON																					
MACON																					
MADISON																					
McDOWELL																					
MITCHELL																					
POLK																					
RUTHERFORD																					
SURRY																					
SWAIN																					
TRANSYLVANIA																					
WATAUGA																					
WILKES																					
YANCEY																					
										UNDER CONSTRUCTION											
RURAL PROJECTS																					
CLAY	US 64/NC 69	A-0011	NC 69, GEORGIA STATE LINE TO US 64. WIDEN TO FOUR LANES DIVIDED. US 64, NC 69 TO EAST OF NC 175. WIDEN TO MULTI-LANES.	4.5	103468	30268	APD									R	14700	C			
							APD														
							APD														
							APD														
							A GEORGIA STATE LINE TO US 64 (HAYESVILLE BYPASS). UPGRADE EXISTING TWO-LANES - COMPLETE														
							BA NC 69 IN HAYESVILLE TO EAST OF THE HIWASSEE RIVER - COMPLETE														
							BB EAST OF THE HIWASSEE RIVER TO EAST OF NC 175 - COMPLETE														
							DIV C GEORGIA STATE LINE TO US 64 (HAYESVILLE BYPASS). WIDEN TO FOUR-LANES														
							D EAST OF THE HIWASSEE RIVER TO EAST OF NC 175. WIDEN TO FOUR-LANES.														
CLAY	US 64	R-4416	CHUNKY GAL GAP WESTWARD FOR TWO MILES. CONSTRUCT TRUCK CLIMBING LANE.	2	5675	675	STP	C	5000												
		TRN																			
										DIVISION PROJECT											
CLAY	NC 175	R-5742	GEORGIA STATE LINE TO US 64. UPGRADE ROADWAY.	4.1	4900		T								R	100					
		DIV					T										C	4800			
CHEROKEE	VARIOUS	R-4048	GUARDRAIL INSTALLATION AND SAFETY IMPROVEMENTS.		2519	2519															
CLAY																					
GRAHAM																					
HAYWOOD																					
HENDERSON																					
JACKSON																					
MACON																					
POLK																					
SWAIN																					
TRANSYLVANIA																					
										IN PROGRESS - PURCHASE ORDER CONTRACT (POC)											
FEDERAL BRIDGE PROJECTS																					
CLAY	NC 175	B-4733	REPLACE BRIDGE NO. 11 OVER CHATUGE LAKE.		4072	4072															
		REG																			
										UNDER CONSTRUCTION											

DIV - Division CategoryEX - Exempt Category
HF - State Dollars (Non STI)REG - Regional Category
SW - Statewide CategoryTRN - Transition Project

HIGHWAY PROGRAM

										TYPE OF WORK / ESTIMATED COST IN THOUSANDS / PROJECT BREAKS																																																																																																																																																																																																																																																																																																																																																																																																																																																																																																																																																																																																																																																																																																																																																																																																																																																																																																																																																																																																																																																																																																																																																																																																																																																																																												
COUNTY	ROUTE/CITY	ID NUMBER	LOCATION / DESCRIPTION	LENGTH	TOTAL PROJ COST (THOU)	PRIOR YEARS COST (THOU)	FUNDS	FY 2015	STATE TRANSPORTATION PROGRAM										DEVELOPMENTAL PROGRAM					UNFUNDED																																																																																																																																																																																																																																																																																																																																																																																																																																																																																																																																																																																																																																																																																																																																																																																																																																																																																																																																																																																																																																																																																																																																																																																																																																																																														
									FY 2016	FY 2017	FY 2018	FY 2019	FY 2020	FY 2021	FY 2022	FY 2023	FY 2024	FY 2025	FUTURE YEARS																																																																																																																																																																																																																																																																																																																																																																																																																																																																																																																																																																																																																																																																																																																																																																																																																																																																																																																																																																																																																																																																																																																																																																																																																																																																																			
FEDERAL BRIDGE PROJECTS																																																																																																																																																																																																																																																																																																																																																																																																																																																																																																																																																																																																																																																																																																																																																																																																																																																																																																																																																																																																																																																																																																																																																																																																																																																																																																						
CLAY	SR 1169 (LEFORD ROAD)	B-5918	REPLACE BRIDGE NO. 60 OVER LEFT FORK EAGLE CREEK.		320		STPOFF																																																																																																																																																																																																																																																																																																																																																																																																																																																																																																																																																																																																																																																																																																																																																																																																																																																																																																																																																																																																																																																																																																																																																																																																																																																																																															

DIV - Division Category EX - Exempt Category
HF - State Dollars (Non STI) REG - Regional Category
SW - Statewide Category TRN - Transition Project

HIGHWAY PROGRAM

DIVISION 14

TYPE OF WORK / ESTIMATED COST IN THOUSANDS / PROJECT BREAKS

[illegible]

UNDER CONSTRUCTION

RURAL PROJECTS

CHEROKEE	VARIOUS	R-4048	GUARDRAIL INSTALLATION AND SAFETY	2519	2519
CLAY			IMPROVEMENTS.		
GRAHAM					
HAYWOOD					
HENDERSON					
JACKSON					
MACON					
POLK					
SWAIN					
TRANSYLVANIA					

IN PROGRESS - PURCHASE ORDER CONTRACT (POC)

[illegible]

- | | | |
|-----|----|--|
| | A | US 19 BUSINESS IN ANDREWS TO US 129 |
| DIV | B | US 129 TO NC 143 AT SR 1223 (BEECH CREEK) - DESIGN-BUILD CONTRACT |
| EX | C | NC 143 AT SR 1223 (BEECH CREEK) TO NC 28 AT STECOAH - RIGHT OF WAY ONLY |
| EX | CA | NC 143 AT SR 1223 (BEECH CREEK) TO NC 28 AT STECOAH. GRADING AND STRUCTURES (EXCEPT TUNNELS). - DESIGN-BUILD CONTRACT |
| EX | CB | TUNNELS AT APPALACHIAN TRAIL - DESIGN-BUILD CONTRACT |
| | CC | NC 143 AT SR 1223 (BEECH CREEK) TO NC 28 AT STECOAH. PAVING. |
| | DA | SR 1121 (WATTIA ROAD) AT ALMONDS TO EXISTING US 19/NC 28- COMPLETE |
| | DB | EAST OF CALFPEN GAP IN GRAHAM COUNTY TO SR 1121 (WATTIA ROAD) AT ALMONDS IN SWAIN COUNTY - COMPLETE |
| | DC | WEST OF SR 1231 (TOBACCO BRANCH ROAD) TO CALFPEN GAP - COMPLETE |
| | DD | NC 28 AT STECOAH TO WEST OF SR 1231 (TOBACCO BRANCH ROAD) - COMPLETE |

PROGRAMMED FOR PLANNING AND ENVIRONMENTAL STUDY ONLY

DIV - Division Category	EX - Exempt Category
HF - State Dollars (Non STI)	REG - Regional Category
SW - Statewide Category	TRN - Transition Project

**COST AND SCHEDULES ARE PRELIMINARY AND SUBJECT TO
SIGNIFICANT CHANGE AS MORE INFORMATION BECOMES
AVAILABLE**

										TYPE OF WORK / ESTIMATED COST IN THOUSANDS / PROJECT BREAKS																																																																																																																																																																																																																																																																																																																																																																																																																																																																																																																																																																																																																																																																																																																																																																																																																																																																																																																																																																																																																																																																																																																																																																																																																																																																																					
COUNTY	ROUTE/CITY	ID NUMBER	LOCATION / DESCRIPTION	LENGTH	TOTAL PROJ COST (THOU)	PRIOR YEARS COST (THOU)	FUNDS	FY 2015	STATE TRANSPORTATION PROGRAM					DEVELOPMENTAL PROGRAM					UNFUNDED																																																																																																																																																																																																																																																																																																																																																																																																																																																																																																																																																																																																																																																																																																																																																																																																																																																																																																																																																																																																																																																																																																																																																																																																																																																																												
									FY 2016	FY 2017	FY 2018	FY 2019	FY 2020	FY 2021	FY 2022	FY 2023	FY 2024	FY 2025	FUTURE YEARS																																																																																																																																																																																																																																																																																																																																																																																																																																																																																																																																																																																																																																																																																																																																																																																																																																																																																																																																																																																																																																																																																																																																																																																																																																																																												
URBAN PROJECTS																																																																																																																																																																																																																																																																																																																																																																																																																																																																																																																																																																																																																																																																																																																																																																																																																																																																																																																																																																																																																																																																																																																																																																																																																																																																																															
GRAHAM	NEW ROUTE	U-5866	US 129 (RODNEY ORR BYPASS) TO ROBINSVILLE HIGH SCHOOL AND MIDDLE SCHOOL. CONSTRUCT NEW ROUTE INCLUDING BRIDGE OVER CHEOAH RIVER.	0.3	3970	T																																																																																																																																																																																																																																																																																																																																																																																																																																																																																																																																																																																																																																																																																																																																																																																																																																																																																																																																																																																																																																																																																																																																																																																																																																																																																									</

DIV - Division Category
HF - State Dollars (Non STI)
SW - Statewide Category

EX - Exempt Category
REG - Regional Category
TRN - Transition Project

										TYPE OF WORK / ESTIMATED COST IN THOUSANDS / PROJECT BREAKS																		
COUNTY	ROUTE/CITY	ID NUMBER	LOCATION / DESCRIPTION	LENGTH	TOTAL PROJ COST (THOU)	PRIOR YEARS COST (THOU)	FUNDS	FY 2015	STATE TRANSPORTATION PROGRAM					DEVELOPMENTAL PROGRAM					UNFUNDED									
									FY 2016	FY 2017	FY 2018	FY 2019	FY 2020	FY 2021	FY 2022	FY 2023	FY 2024	FY 2025	FUTURE YEARS									
ENHANCEMENT (CALL PROJECTS)																												
ALLEGHANY	VARIOUS	E-4975	BLUE RIDGE NATIONAL HERITAGE SITES.		576	576																						
ASHE			INTERPRETATIVE AND GATEWAY MARKERS.																									
AVERY																												
BUNCOMBE																												
BURKE																												
CALDWELL																												
CHEROKEE																												
CLAY																												
GRAHAM																												
HAYWOOD																												
HENDERSON																												
JACKSON																												
MACON																												
MADISON																												
McDOWELL																												
MITCHELL																												
POLK																												
RUTHERFORD																												
SURRY																												
SWAIN																												
TRANSYLVANIA																												
WATAUGA																												
WILKES																												
YANCEY																												
										UNDER CONSTRUCTION																		
INTERSTATE PROJECTS																												
HAYWOOD	I-40	I-5834 SW	0.4 MILE EAST OF SR 1366 (ORCHARD COVE ROAD) TO 0.4 MILE EAST OF SR 1535 (THOMPSON COVE ROAD). PAVEMENT REHABILITATION.	5	3047		NHPIM							C	3047													
HAYWOOD	I-40	I-5776 SW	0.4 MILE EAST OF SR 1366 (ORCHARD COVE ROAD) TO SR 1535 (THOMPSON COVE). PAVEMENT REHABILITATION.	5	600		NHPIM						C	600														
HAYWOOD	I-40	I-5757 SW	0.2 MILE EAST OF SR 1513 (HYDER MOUNTAIN ROAD) TO SR 1535 (THOMPSON COVE ROAD). PAVEMENT REHABILITATION.	2	200		NHPIM						C	200														
HAYWOOD	I-40	I-5756 SW	0.4 MILE EAST OF SR 1366 (ORCHARD COVE ROAD) TO 0.2 MILE EAST OF SR 1513 (HYDER MOUNTAIN ROAD). PAVEMENT REHABILITATION.	3	400		NHPIM						C	400														
HAYWOOD	I-40	I-5512 SW	REHABILITATE TUNNELS 15, 17, AND 104.		6000		NHPIM		C	2500																		
							O		C	3500																		
										"O" FUNDS ARE STATE BRIDGE FUNDS.																		
HAYWOOD	I-40	I-5508 TRN	I-40 NEAR MILEPOST 7. SLOPE STABILIZATION, ROCK BOLTING, AND ROCKFALL BARRIER FENCE AND MESH.		6551	251	NHPIM		C	6300																		
										RIGHT OF WAY IN PROGRESS																		
HAYWOOD	I-40	I-5402	MILE POST 35 TO MILE POST 36. ADDRESS SLOPE INSTABILITY THROUGH REPAIRS AND STREAM RESTORATION.		1439	1439																						
										UNDER CONSTRUCTION																		
HAYWOOD	I-40	I-5323	MILE MARKER 34 TO MILE MARKER 36. PAVEMENT REHABILITATION.	2	4473	4473																						
										UNDER CONSTRUCTION																		
HAYWOOD	I-40	I-5322	MILE MARKER 15 TO MILE MARKER 20. PAVEMENT REHABILITATION.	5	9864	9864																						
										UNDER CONSTRUCTION																		

DIV - Division Category
HF - State Dollars (Non STI)
SW - Statewide Category

EX - Exempt Category
REG - Regional Category
TRN - Transition Project

HIGHWAY PROGRAM

DIVISION 14

TYPE OF WORK / ESTIMATED COST IN THOUSANDS / PROJECT BREAKS

										STATE TRANSPORTATION PROGRAM								DEVELOPMENTAL PROGRAM										UNFUNDED			
COUNTY	ROUTE/CITY	ID NUMBER	LOCATION / DESCRIPTION	LENGTH	TOTAL PROJ COST (THOU)	PRIOR YEARS COST (THOU)	FUNDS	FY 2015		FY 2016	FY 2017	FY 2018	FY 2019	FY 2020	FY 2021	FY 2022	FY 2023	FY 2024	FY 2025	FUTURE YEARS											
INTERSTATE PROJECTS																															
HAYWOOD	I-40	I-4910 TRN	TENNESSEE STATE LINE (MILE MARKER 0.0) TO EXIT 15 (MILE MARKER 14.8). PAVEMENT REHABILITATION.	14.8	24728	17673	NHP	CG	1411	CG	1411	CG	1411	CG	1411																
										COMPLETE - GARVEE BOND FUNDING \$12.87 MILLION; PAYBACK FY 2008 - FY 2019																					
HAYWOOD	I-40	I-5868 SW	SR 1535 (THOMPSON COVE RD) TO BUNCOMBE COUNTY LINE. PAVEMENT REHABILITATION.	8.5	4200		NHPIM									C	4200														
HAYWOOD	I-40	I-5810 SW	0.2 MILE EAST OF SR 1338 (WHITEOAK ROAD) TO 0.7 MILE EAST OF US 276. PAVEMENT REHABILITATION.	6.3	2300		NHPIM					C	2300																		
HAYWOOD	I-40	I-5004 TRN	US 74 (MILE MARKER 27) TO BUNCOMBE COUNTY LINE. PAVEMENT REHABILITATION.	7	12404	8732	NHP	CG	918	CG	918	CG	918																		
										COMPLETE - GARVEE BOND FUNDING \$8.37 MILLION; PAYBACK FY 2007 - FY 2018																					
RURAL PROJECTS																															
HAYWOOD JACKSON	US 19	R-5747 DIV	SR 1304 (FIE TOP ROAD) AT GHOST TOWN USA TO JENKINS CREEK ROAD. UPGRADE ROADWAY.	9.4	8800		T										R	100													
HAYWOOD	US 276	R-4904 TRN	3 MILES EAST OF US 23 BUSINESS. REPAIR SLOPE FAILURES AND RESURFACE.		921	921																									
										UNDER CONSTRUCTION - SECTION 115 FUNDS, 2004 APPROPRIATIONS ACT USED FOR PRELIMINARY ENGINEERING																					
HAYWOOD	NC 209	R-4047 TRN	US 23 BUSINESS TO NORTH OF SR 1523 (OLD CLYDE ROAD) AT LAKE JUNALUSKA. WIDEN TO A MULTI-LANE FACILITY AND REPLACE RAILROAD STRUCTURE R-32. (INCLUDES R-2210B).	0.3	31261	19287	STP	C	5987	C	5987																				
										UNDER CONSTRUCTION - INCLUDES R-2210 B																					
CHEROKEE CLAY GRAHAM HAYWOOD HENDERSON JACKSON MACON POLK SWAIN TRANSYLVANIA	VARIOUS	R-4048	GUARDRAIL INSTALLATION AND SAFETY IMPROVEMENTS.		2519	2519																									
										IN PROGRESS - PURCHASE ORDER CONTRACT (POC)																					
URBAN PROJECTS																															
HAYWOOD	US 276 (RUSS AVENUE)	U-5839 DIV	US 23/74 TO US 23 BUSINESS (MAIN STREET). UPGRADE CORRIDOR.	1.1	17750		T									R	6200														
HAYWOOD	SR 1184 (HOWELL MILL ROAD)	U-4412	US 276 TO US 23 BUSINESS IN WAYNESVILLE. UPGRADE TWO LANES AND CONSTRUCT RAILROAD GRADE SEPARATION.	1.5	22023	22023																									
										UNDER CONSTRUCTION																					
BUNCOMBE HAYWOOD HENDERSON	VARIOUS	U-5100 DIV	STP-DA IN THE FRENCH BROAD RIVER METROPOLITAN PLANNING ORGANIZATION.		36950		STPDA			C	500	C	1060	C	3500	C	3500	C	3500	C	3500										
HAYWOOD	BROWN AVENUE	U-5548 DIV	REALIGNMENT OF BROWN AVENUE FROM BOYD AVENUE TO APPROXIMATELY 1200 FEET SOUTH OF THE INTERSECTION. PROJECT INCLUDES CONSTRUCTION OF NEW ROADWAY (SCHOOL STREET), RAISED CROSSWALK, PAINTED CROSSWALKS, REFUGE ISLAND, BULBOUT AND SIGNAGE.		550		STPDA			PE	40																				

DIV - Division Category	EX - Exempt Category
HF - State Dollars (Non STI)	REG - Regional Category
SW - Statewide Category	TRN - Transition Project

**COST AND SCHEDULES ARE PRELIMINARY AND SUBJECT TO
SIGNIFICANT CHANGE AS MORE INFORMATION BECOMES
AVAILABLE**

HIGHWAY PROGRAM

										TYPE OF WORK / ESTIMATED COST IN THOUSANDS / PROJECT BREAKS																																																																																																																																																																																																																																																																																																																																																																																																																																																																																																																																																																																																																																																																																																																																																																																																																																																																																																																																																																																																																																																																																																																																																																																																																																																																																																						
COUNTY	ROUTE/CITY	ID NUMBER	LOCATION / DESCRIPTION	LENGTH	TOTAL PROJ COST (THOU)	PRIOR YEARS COST (THOU)	FUNDS	FY 2015	STATE TRANSPORTATION PROGRAM					DEVELOPMENTAL PROGRAM					UNFUNDED																																																																																																																																																																																																																																																																																																																																																																																																																																																																																																																																																																																																																																																																																																																																																																																																																																																																																																																																																																																																																																																																																																																																																																																																																																																																																													
									FY 2016	FY 2017	FY 2018	FY 2019	FY 2020	FY 2021	FY 2022	FY 2023	FY 2024	FY 2025	FUTURE YEARS																																																																																																																																																																																																																																																																																																																																																																																																																																																																																																																																																																																																																																																																																																																																																																																																																																																																																																																																																																																																																																																																																																																																																																																																																																																																																													
FEDERAL BRIDGE PROJECTS																																																																																																																																																																																																																																																																																																																																																																																																																																																																																																																																																																																																																																																																																																																																																																																																																																																																																																																																																																																																																																																																																																																																																																																																																																																																																																																
HAYWOOD	I-40	B-5541	REPLACE BRIDGE NO. 236 OVER SR 1513.		7700		HFB											R	700																																																																																																																																																																																																																																																																																																																																																																																																																																																																																																																																																																																																																																																																																																																																																																																																																																																																																																																																																																																																																																																																																																																																																																																																																																																																																													

DIV - Division Category

HF - State Dollars (Non STI)

SW - Statewide Category

EX - Exempt Category

REG - Regional Category

TRN - Transition Project

DIVISION14

HIGHWAY PROGRAM

										TYPE OF WORK / ESTIMATED COST IN THOUSANDS / PROJECT BREAKS																			
COUNTY	ROUTE/CITY	ID NUMBER	LOCATION / DESCRIPTION	LENGTH	TOTAL PROJ COST (THOU)	PRIOR YEARS COST (THOU)	FUNDS	FY 2015	STATE TRANSPORTATION PROGRAM										DEVELOPMENTAL PROGRAM										UNFUNDED
									FY 2016	FY 2017	FY 2018	FY 2019	FY 2020	FY 2021	FY 2022	FY 2023	FY 2024	FY 2025	FUTURE YEARS										
CONGESTION MITIGATION PROJECTS																													
HAYWOOD	GREAT SMOKY	C-5202	TRANSPORTATION CHOICES. INCREASE		308	119	CMAQ	I	91		I	60																	
SWAIN	MOUNTAINS		EDUCATION EFFORTS THAT INFORM				L	I	23		I	15																	
	NATIONAL PARK		VISITORS ABOUT THE ROLE THEIR																										
	(GSMNP)		TRANSPORTATION CHOICES HAVE IN																										
		EX	RELATION TO AIR POLLUTION ISSUES IN																										
			GSMNP.																										
IN PROGRESS																													
ENHANCEMENT (CALL PROJECTS)																													
ALLEGHANY	VARIOUS	E-4975	BLUE RIDGE NATIONAL HERITAGE SITES.		576	576																							
ASHE			INTERPRETATIVE AND GATEWAY MARKERS.																										
AVERY																													
BUNCOMBE																													
BURKE																													
CALDWELL																													
CHEROKEE																													
CLAY																													
GRAHAM																													
HAYWOOD																													
HENDERSON																													
JACKSON																													
MACON																													
MADISON																													
McDOWELL																													
MITCHELL																													
POLK																													
RUTHERFORD																													
SURRY																													
SWAIN																													
TRANSYLVANIA																													
WATAUGA																													
WILKES																													
YANCEY																													
UNDER CONSTRUCTION																													
ROADSIDE ENVIRONMENTAL PROJECTS (REST AREA)																													
HAYWOOD	US 23/US 74	K-5002	US 23/US 74, ADD NEW SOUTHBOUND REST		7892	5142	NHP	C	2750																				
		TRN	AREA ON NEW LOCATION AS A COMPANION																										
			TO EXISTING NORTHBOUND REST AREA.																										
			CONNECT NEW REST AREA TO MUNICIPAL																										
			WATER AND SEWER SYSTEM. RENOVATE																										
			EXISTING NORTHBOUND REST AREA TO																										
			INCLUDE ADA COMPLIANT FAMILY																										
			RESTROOM, UPGRADE FIXTURES AND																										
			FINISHES AND CONNECT TO MUNICIPAL																										
			SEWER SYSTEM.																										
UNDER CONSTRUCTION - INCLUDES WORK PREVIOUSLY IN PROJECT K-3803B																													
HAYWOOD	BLUE RIDGE	S-5105	GRAVEYARD FIELDS OVERLOOK AT BLUE		261	261																							
	PARKWAY		RIDGE PARKWAY MILE POST 418. EXPAND																										
			PARKING LOT, CONSTRUCT A THREE-UNIT																										
			CONVENIENCE STATION, INSTALL NEW																										
			INTERPRETIVE EDUCATIONAL SIGNS AND																										
			MAKE TRAIL IMPROVEMENTS.																										
UNDER CONSTRUCTION																													
INTERSTATE PROJECTS																													
HENDERSON	I-26	I-5759	1 MILE EAST OF SR 1793 (TRACY GROVE	1.8	200		NHPIM				C	200																	
		SW	ROAD) TO 0.2 MILE EAST OF US 25.																										
			PAVEMENT REHABILITATION.																										
HENDERSON	I-26 / US 74	I-5835	SR 1525 (DANA ROAD) TO 0.1 MILE EAST OF	7.4	6000		NHPIM										C	6000											
POLK			POLK COUNTY LINE. PAVEMENT																										
		SW	REHABILITATION.																										

DIV - Division Category

HF - State Dollars (Non STI)

SW - Statewide Category

EX - Exempt Category

REG - Regional Category

TRN - Transition Project

DIVISION 14

DIV - Division Category	EX - Exempt Category
HF - State Dollars (Non STI)	REG - Regional Category
SW - Statewide Category	TRN - Transition Project

HIGHWAY PROGRAM

										TYPE OF WORK / ESTIMATED COST IN THOUSANDS / PROJECT BREAKS																			
					TOTAL PROJ COST (THOU)	PRIOR YEARS COST (THOU)			STATE TRANSPORTATION PROGRAM										DEVELOPMENTAL PROGRAM					UNFUNDED					
COUNTY	ROUTE/CITY	ID NUMBER	LOCATION / DESCRIPTION	LENGTH			FUNDS	FY 2015	FY 2016	FY 2017	FY 2018	FY 2019	FY 2020	FY 2021	FY 2022	FY 2023	FY 2024	FY 2025	FUTURE YEARS										
RURAL PROJECTS																													
BUNCOMBE HENDERSON	SR 2277/SR 3526 (OLD FANNING BRIDGE ROAD)	R-5524	CONSTRUCT IMPROVEMENTS TO OLD FANNING BRIDGE ROAD AND CONSTRUCT NEW ACCESS ROAD INTO FERNCLIFF INDUSTRIAL PARK.		2221	2181	T	R	40	C																			
										A INSTALL TRAFFIC SIGNAL. - UNDER CONSTRUCTION																			
										B NC 280 TO SR 1419 (OLD FANNING BRIDGE ROAD). RESURFACE AND ADD BIKE LANES. - UNDER CONSTRUCTION																			
										TRN C CONSTRUCT ROUNDABOUT. - UNDER CONSTRUCTION																			
										D CONSTRUCT NEW ACCESS ROAD INTO FERNCLIFF INDUSTRIAL PARK. - UNDER CONSTRUCTION																			
CHEROKEE CLAY GRAHAM HAYWOOD HENDERSON JACKSON MACON POLK SWAIN TRANSYLVANIA	VARIOUS	R-4048	GUARDRAIL INSTALLATION AND SAFETY IMPROVEMENTS.		2519	2519																							
IN PROGRESS - PURCHASE ORDER CONTRACT (POC)																													
HENDERSON	BALFOUR PARKWAY	R-5744	NC 191 (BREVARD ROAD) TO US 64. CONSTRUCT NEW 4-LANE EXPRESSWAY.	4.6	156200	T											R	8767		R	8766		R	8767					
						T											U	900											
						T																	C	129000					
DIV																													
URBAN PROJECTS																													
HENDERSON	US 64	U-5783	SR 1180 (BLYTHE STREET) TO SR 1173 (WHITE PINE DRIVE)/SR 1186 (DANIEL DRIVE). WIDEN ROADWAY.	1	7270	T								R	1850														
						T								U	220														
						T										C	5200												
REG																													
HENDERSON	SR 1545 (OLD AIRPORT ROAD)	U-5840	US 25 TO MILLS GAP ROAD. WIDEN ROADWAY.	0.9	2300	T							R	100															
						T										C	2200												
DIV																													
BUNCOMBE HAYWOOD HENDERSON	VARIOUS	U-5100	STP-DA IN THE FRENCH BROAD RIVER METROPOLITAN PLANNING ORGANIZATION.		36950	STPDA					C	500	C	1060	C	3500	C	3500	C	3500	C	3500	C	3500					
						L					C	125	C	265	C	875	C	875	C	875	C	875	C	875					
DIV																													
BUNCOMBE HENDERSON	ASHEVILLE	U-3403	NC 191 (BREVARD ROAD - OLD HAYWOOD ROAD), NC 280 TO NC 112 (SARDIS ROAD). WIDEN TO MULTI-LANES.	9.1	49300	STP																	R	9000					
						STP																	C	17700					
						STP																							
						STP																							
						STP																							
										A NC 280 (BOYLSTON HIGHWAY) TO NC 146.																			
										REG B NC 146 TO NORTH OF BLUE RIDGE PARYWAY.																			
										C NORTH OF BLUE RIDGE PARKWAY TO NC 112 (SARDIS ROAD) - COMPLETE																			
HENDERSON	HENDERSONVILLE	U-5192	CONSTRUCT TRANSIT CENTER IN HENDERSONVILLE.		2090	STPDA	C	1672																					
						L		C	418																				
DIV																													
HENDERSON	HENDERSONVILLE	U-5105	NC 225/SR 1164 (ERKWOOD DRIVE)/SR 1779(SHEPHERD STREET) IN HENDERSONVILLE. IMPROVE INTERSECTION.		1900	200	STP	R	200																				
						STP																							
						TRN																							
DIVISION PROJECT																													
FEASIBILITY STUDIES																													
HENDERSON	BALFOUR PARKWAY	FS-1214B	US 64 TO NC 191 (BREVARD ROAD). CONSTRUCT NEW ROUTE.	4.6																									
FEASIBILITY STUDY IN PROGRESS																													

DIV - Division Category EX - Exempt Category
HF - State Dollars (Non STI) REG - Regional Category
SW - Statewide Category TRN - Transition Project

HIGHWAY PROGRAM

										TYPE OF WORK / ESTIMATED COST IN THOUSANDS / PROJECT BREAKS																																																																																																																																																																																																																																																																																																																																																																																																																																																																																																																																																																																																																																																																																																																																																																																																																																																																																																																																																																																																																																																																																																																																																																																																																																																																																																																																																																																																																																																		
COUNTY	ROUTE/CITY	ID NUMBER	LOCATION / DESCRIPTION	LENGTH	TOTAL PROJ COST (THOU)	PRIOR YEARS COST (THOU)	FUNDS	FY 2015	STATE TRANSPORTATION PROGRAM										DEVELOPMENTAL PROGRAM										UNFUNDED																																																																																																																																																																																																																																																																																																																																																																																																																																																																																																																																																																																																																																																																																																																																																																																																																																																																																																																																																																																																																																																																																																																																																																																																																																																																																																																																																																																																																															
									FY 2016	FY 2017	FY 2018	FY 2019	FY 2020	FY 2021	FY 2022	FY 2023	FY 2024	FY 2025	FUTURE YEARS																																																																																																																																																																																																																																																																																																																																																																																																																																																																																																																																																																																																																																																																																																																																																																																																																																																																																																																																																																																																																																																																																																																																																																																																																																																																																																																																																																																																																																									
FEDERAL BRIDGE PROJECTS																																																																																																																																																																																																																																																																																																																																																																																																																																																																																																																																																																																																																																																																																																																																																																																																																																																																																																																																																																																																																																																																																																																																																																																																																																																																																																																																																																																																																																																												
HENDERSON	NC 191	B-5901	REPLACE BRIDGE NO. 121 OVER FRENCH BROAD RIVER OVERFLOW.		2206		NHPB										R	100																																																																																																																																																																																																																																																																																																																																																																																																																																																																																																																																																																																																																																																																																																																																																																																																																																																																																																																																																																																																																																																																																																																																																																																																																																																																																																																																																																																																																																										</

HIGHWAY PROGRAM

										TYPE OF WORK / ESTIMATED COST IN THOUSANDS / PROJECT BREAKS																																																																																																																																																																																																																																																																																																																																																																																																																																																																																																																																																																																																																																																																																																																																																																																																																																																																																																																																																																																																																																																																																																																																																																																																																																																																																																																																																																																																																																																																																																																																																																																																																					
COUNTY	ROUTE/CITY	ID NUMBER	LOCATION / DESCRIPTION	LENGTH	TOTAL PROJ COST (THOU)	PRIOR YEARS COST (THOU)	FUNDS	FY 2015	STATE TRANSPORTATION PROGRAM					DEVELOPMENTAL PROGRAM					UNFUNDED																																																																																																																																																																																																																																																																																																																																																																																																																																																																																																																																																																																																																																																																																																																																																																																																																																																																																																																																																																																																																																																																																																																																																																																																																																																																																																																																																																																																																																																																																																																																																																																																												
									FY 2016	FY 2017	FY 2018	FY 2019	FY 2020	FY 2021	FY 2022	FY 2023	FY 2024	FY 2025	FUTURE YEARS																																																																																																																																																																																																																																																																																																																																																																																																																																																																																																																																																																																																																																																																																																																																																																																																																																																																																																																																																																																																																																																																																																																																																																																																																																																																																																																																																																																																																																																																																																																																																																																																												
FEDERAL BRIDGE PROJECTS																																																																																																																																																																																																																																																																																																																																																																																																																																																																																																																																																																																																																																																																																																																																																																																																																																																																																																																																																																																																																																																																																																																																																																																																																																																																																																																																																																																																																																																																																																																																																																																																																															
HENDERSON	SR 1812 (BLUE RIDGE ROAD)	B-5897	REPLACE BRIDGE NO. 62 OVER KING CREEK.		255		HFB									R	25																																																																																																																																																																																																																																																																																																																																																																																																																																																																																																																																																																																																																																																																																																																																																																																																																																																																																																																																																																																																																																																																																																																																																																																																																																																																																																																																																																																																																																																																																																																																																																																																														</

DIV - Division Category EX - Exempt Category
HF - State Dollars (Non STI) REG - Regional Category
SW - Statewide Category TRN - Transition Project

HIGHWAY PROGRAM

DIVISION 14

TYPE OF WORK / ESTIMATED COST IN THOUSANDS / PROJECT BREAKS

									TYPE OF WORK / ESTIMATED COST IN THOUSANDS / PROJECT BREAKS											
						TOTAL PROJ COST (THOU)	PRIOR YEARS COST (THOU)	FUNDS	FY 2015	STATE TRANSPORTATION PROGRAM					DEVELOPMENTAL PROGRAM					UNFUNDED
COUNTY	ROUTE/CITY	ID NUMBER	LOCATION / DESCRIPTION	LENGTH						FY 2016	FY 2017	FY 2018	FY 2019	FY 2020	FY 2021	FY 2022	FY 2023	FY 2024	FY 2025	FUTURE YEARS
HAZARD ELIMINATION PROJECTS																				
CHEROKEE CLAY GRAHAM HAYWOOD HENDERSON JACKSON MACON POLK SWAIN TRANSYLVANIA	VARIOUS	W-5214	DIVISION 14 RUMBLE STRIPS, GUARDRAIL, SAFETY AND LIGHTING IMPROVEMENTS AT SELECTED LOCATIONS.			3128	3128													
									IN PRGRESS - DIVISION PURCHASE ORDER CONTRACT (DPOC)											
ENHANCEMENT (CALL PROJECTS)																				
ALLEGHANY ASHE AVERY BUNCOMBE BURKE CALDWELL CHEROKEE CLAY GRAHAM HAYWOOD HENDERSON JACKSON MACON MADISON McDOWELL MITCHELL POLK RUTHERFORD SURRY SWAIN TRANSYLVANIA WATAUGA WILKES YANCEY	VARIOUS	E-4975	BLUE RIDGE NATIONAL HERITAGE SITES. INTERPRETATIVE AND GATEWAY MARKERS.			576	576													
									UNDER CONSTRUCTION											
ROADSIDE ENVIRONMENTAL PROJECTS (SCENIC)																				
HENDERSON POLK	VARIOUS	S-5101	PACOLET RIVER BYWAY. COMPREHENSIVE BASELINE ASSESSMENT AND STRATEGIC PLAN FOR BYWAY IN NORTH PACOLET WATERSHED.			46	46													
									IN PROGRESS											
RURAL PROJECTS																				
HAYWOOD JACKSON	US 19	R-5747 DIV	SR 1304 (FIE TOP ROAD) AT GHOST TOWN USA TO JENKINS CREEK ROAD. UPGRADE ROADWAY.	9.4		8800		T T									R	100		
JACKSON TRANSYLVANIA	US 64	R-2409	NC 107 AT CASHIERS TO US 178 AT ROSMAN. SAFETY IMPROVEMENTS AND CLIMBING LANES AT SELECTED LOCATIONS.			22931	12581	HP STP STP	C 	4350 	C 									
									A CASHIERS TO JACKSON-TRANSYLVANIA COUNTY LINE - COMPLETE B 1.1 MILES EAST OF CASHIERS TO 1.6 MILES EAST OF CASHIERS - COMPLETE TRN C WEST OF NC 281 N NEAR LAKE TOXAWAY TO INDIAN CREEK. WIDENING AND REALIGNMENT. - RIGHT OF WAY IN PROGRESS D INDIAN CREEK TO FLAT CREEK VALLEY ROAD. WIDENING AND REALIGNMENT											
									DIVISION PROJECT - PLANNING/DESIGN IN PROGRESS											

DIV - Division Category	EX - Exempt Category
HF - State Dollars (Non STI)	REG - Regional Category
SW - Statewide Category	TRN - Transition Project

HIGHWAY PROGRAM

									TYPE OF WORK / ESTIMATED COST IN THOUSANDS / PROJECT BREAKS														
COUNTY	ROUTE/CITY	ID NUMBER	LOCATION / DESCRIPTION	LENGTH	TOTAL PROJ COST (THOU)	PRIOR YEARS COST (THOU)	FUNDS	FY 2015	STATE TRANSPORTATION PROGRAM					DEVELOPMENTAL PROGRAM					UNFUNDED				
									FY 2016	FY 2017	FY 2018	FY 2019	FY 2020	FY 2021	FY 2022	FY 2023	FY 2024	FY 2025	FUTURE YEARS				
RURAL PROJECTS																							
JACKSON	NC 107	FS-1214C	NC 281 TO APPROXIMATELY 1 MILE NORTH OF SR 1157 (PINE CREEK ROAD). WIDEN PAVEMENT TO 24 FEET WITH 5 FEET PAVED SHOULDERS.	7.1																			
									FEASIBILITY STUDY IN PROGRESS														
JACKSON	NC 107 (E MAIN ST), US 23 BUS. (W MAIN ST) US 23 BUS(ASHEVILLE HW)	R-5715	SR 1449 (COPE CREEK ROAD) TO SR 1783 (COUNCIL CIRCLE). UPGRADE ROADWAY.	1	12000				T						R	5800							
									T						U	700							
									T														
		REG															C	5500					
JACKSON	NC 107	R-5600	NC 116 TO US 23 BUSINESS. UPGRADE TO MEDIAN DIVIDED FACILITY.	1.9	21275				STP						R	7300							
									STP						U	875							
									STP														
		REG															C	13100					
JACKSON	NC 107	R-4753	SR 1002 TO NC 281. UPGRADE EXISTING ROADWAY.	4.1	19680	813			STP		R	5000											
									STP		M	267											
									STP														
		DIV											C	6800		C	6800						
									PLANNING/DESIGN IN PROGRESS														
JACKSON	SR 1449 (COPE CREEK ROAD)	R-5206	SR 1710 TO US 23/US 74. SAFETY IMPROVEMENTS AND WIDENING TO 10 FEET LANES.	1.9	3857	1576			T		C	10											
									T		M	71											
									T		C	2200											
		TRN							TRN A SR 1710 TO US 23/US 74. - CLEARING AND GRUBBING ONLY														
									RIGHT OF WAY IN PROGRESS														
JACKSON	NEW ROUTE	R-5000	NC 116 TO NC 107 IN WEBSTER. CONSTRUCT CONNECTOR ON NEW LOCATION.	0.7	26857	26857																	
									UNDER CONSTRUCTION														
JACKSON SWAIN	VARIOUS	R-5500	INDIAN RESERVATION ROAD (IRR) PROGRAM. ROAD AND BRIDGE IMPROVEMENTS TO BE CONSTRUCTED BY EASTERN BAND OF CHEROKEE INDIANS.		5672				FLPI		C	5672											
		EX																					
CHEROKEE CLAY GRAHAM HAYWOOD HENDERSON JACKSON MACON POLK SWAIN TRANSYLVANIA	VARIOUS	R-4048	GUARDRAIL INSTALLATION AND SAFETY IMPROVEMENTS.		2519	2519																	
									IN PROGRESS - PURCHASE ORDER CONTRACT (POC)														
FEDERAL BRIDGE PROJECTS																							
JACKSON	US 23 BUSINESS	B-5905	REPLACE BRIDGE NO. 27 OVER SCOTT CREEK AND SOUTHERN RAILROAD.		5820	150			STPON						R	270							
									STPON								C	5400					
		REG																					
JACKSON	US 23/US 74	B-4554 SW	REPLACE BRIDGE NO. 145 OVER SR 1705, SOUTHERN RAILROAD, AND SCOTT CREEK.		8000	8000																	
									UNDER CONSTRUCTION														
JACKSON	NC 107	B-3480 REG	REPLACE BRIDGE NO. 39 OVER EAST FORK TUCKASEGEE RIVER.		6274	6274																	
									UNDER CONSTRUCTION														
JACKSON	NC 116	B-5910	REPLACE BRIDGE NO. 32 OVER SAVANNAH CREEK.		2130	150			HFB									R	180				
									HFB														
		HF																C	1800				

DIV - Division Category EX - Exempt Category
HF - State Dollars (Non STI) REG - Regional Category
SW - Statewide Category TRN - Transition Project

HIGHWAY PROGRAM

										TYPE OF WORK / ESTIMATED COST IN THOUSANDS / PROJECT BREAKS																																																																																																																																																																																																																																																																																																																																																																																																																																																																																																																																																																																																																																																																																																																																																																																																																																																																																																																																																																																																																																																																																																																																																																																																																																																																																																																																																																																																																																																																																																																																																																																																																																																																																																											
COUNTY	ROUTE/CITY	ID NUMBER	LOCATION / DESCRIPTION	LENGTH	TOTAL PROJ COST (THOU)	PRIOR YEARS COST (THOU)	FUNDS	FY 2015	STATE TRANSPORTATION PROGRAM										DEVELOPMENTAL PROGRAM					UNFUNDED																																																																																																																																																																																																																																																																																																																																																																																																																																																																																																																																																																																																																																																																																																																																																																																																																																																																																																																																																																																																																																																																																																																																																																																																																																																																																																																																																																																																																																																																																																																																																																																																																																																																																													
									FY 2016	FY 2017	FY 2018	FY 2019	FY 2020	FY 2021	FY 2022	FY 2023	FY 2024	FY 2025	FUTURE YEARS																																																																																																																																																																																																																																																																																																																																																																																																																																																																																																																																																																																																																																																																																																																																																																																																																																																																																																																																																																																																																																																																																																																																																																																																																																																																																																																																																																																																																																																																																																																																																																																																																																																																																																		
FEDERAL BRIDGE PROJECTS																																																																																																																																																																																																																																																																																																																																																																																																																																																																																																																																																																																																																																																																																																																																																																																																																																																																																																																																																																																																																																																																																																																																																																																																																																																																																																																																																																																																																																																																																																																																																																																																																																																																																																																					
JACKSON	SR 1002 (ROGER ROAD)	B-4159	REPLACE BRIDGE NO. 108 OVER TUCKASEGEE RIVER.		6686	886	STPON	C	5800																																																																																																																																																																																																																																																																																																																																																																																																																																																																																																																																																																																																																																																																																																																																																																																																																																																																																																																																																																																																																																																																																																																																																																																																																																																																																																																																																																																																																																																																																																																																																																																																																																																																																																												

DIV - Division Category EX - Exempt Category
HF - State Dollars (Non STI) REG - Regional Category
SW - Statewide Category TRN - Transition Project

										TYPE OF WORK / ESTIMATED COST IN THOUSANDS / PROJECT BREAKS																																																																																																																																																																																																																																																																																																																																																																																																																																																																																																																																																																																																																																																																																																																																																																																																																																																																																																																																																																																																																																																																																																																																																																																																																																																																																																																																																																																																																																																																																																																																																																
COUNTY	ROUTE/CITY	ID NUMBER	LOCATION / DESCRIPTION	LENGTH	TOTAL PROJ COST (THOU)	PRIOR YEARS COST (THOU)	FUNDS	FY 2015	STATE TRANSPORTATION PROGRAM										DEVELOPMENTAL PROGRAM					UNFUNDED																																																																																																																																																																																																																																																																																																																																																																																																																																																																																																																																																																																																																																																																																																																																																																																																																																																																																																																																																																																																																																																																																																																																																																																																																																																																																																																																																																																																																																																																																																																																																		
									FY 2016	FY 2017	FY 2018	FY 2019	FY 2020	FY 2021	FY 2022	FY 2023	FY 2024	FY 2025	FUTURE YEARS																																																																																																																																																																																																																																																																																																																																																																																																																																																																																																																																																																																																																																																																																																																																																																																																																																																																																																																																																																																																																																																																																																																																																																																																																																																																																																																																																																																																																																																																																																																																																							
FEDERAL BRIDGE PROJECTS																																																																																																																																																																																																																																																																																																																																																																																																																																																																																																																																																																																																																																																																																																																																																																																																																																																																																																																																																																																																																																																																																																																																																																																																																																																																																																																																																																																																																																																																																																																																																																										
CHEROKEE	VARIOUS	BD-5114	DIVISION 14 PURCHASE ORDER CONTRACT		17255	15255	STPOFF	R	200																																																																																																																																																																																																																																																																																																																																																																																																																																																																																																																																																																																																																																																																																																																																																																																																																																																																																																																																																																																																																																																																																																																																																																																																																																																																																																																																																																																																																																																																																																																																																																	

										TYPE OF WORK / ESTIMATED COST IN THOUSANDS / PROJECT BREAKS																																																																																																																																																																																																																																																																																																																																																																																																																																																																																																																																																																																																																																																																																																																																													
COUNTY	ROUTE/CITY	ID NUMBER	LOCATION / DESCRIPTION	LENGTH	TOTAL PROJ COST (THOU)	PRIOR YEARS COST (THOU)	FUNDS	FY 2015	STATE TRANSPORTATION PROGRAM					DEVELOPMENTAL PROGRAM					UNFUNDED																																																																																																																																																																																																																																																																																																																																																																																																																																																																																																																																																																																																																																																																																																																																				
									FY 2016	FY 2017	FY 2018	FY 2019	FY 2020	FY 2021	FY 2022	FY 2023	FY 2024	FY 2025	FUTURE YEARS																																																																																																																																																																																																																																																																																																																																																																																																																																																																																																																																																																																																																																																																																																																																				
ENHANCEMENT (CALL PROJECTS)																																																																																																																																																																																																																																																																																																																																																																																																																																																																																																																																																																																																																																																																																																																																																							
ALLEGHANY	VARIOUS	E-4975	BLUE RIDGE NATIONAL HERITAGE SITES.		576	576																																																																																																																																																																																																																																																																																																																																																																																																																																																																																																																																																																																																																																																																																																																																																	
ASHE			INTERPRETATIVE AND GATEWAY MARKERS.																																																																																																																																																																																																																																																																																																																																																																																																																																																																																																																																																																																																																																																																																																																																																				
AVERY																																																																																																																																																																																																																																																																																																																																																																																																																																																																																																																																																																																																																																																																																																																																																							
BUNCOMBE																																																																																																																																																																																																																																																																																																																																																																																																																																																																																																																																																																																																																																																																																																																																																							
BURKE																																																																																																																																																																																																																																																																																																																																																																																																																																																																																																																																																																																																																																																																																																																																																							
CALDWELL																																																																																																																																																																																																																																																																																																																																																																																																																																																																																																																																																																																																																																																																																																																																																							
CHEROKEE																																																																																																																																																																																																																																																																																																																																																																																																																																																																																																																																																																																																																																																																																																																																																							
CLAY																																																																																																																																																																																																																																																																																																																																																																																																																																																																																																																																																																																																																																																																																																																																																							
GRAHAM																																																																																																																																																																																																																																																																																																																																																																																																																																																																																																																																																																																																																																																																																																																																																							
HAYWOOD																																																																																																																																																																																																																																																																																																																																																																																																																																																																																																																																																																																																																																																																																																																																																							
HENDERSON																																																																																																																																																																																																																																																																																																																																																																																																																																																																																																																																																																																																																																																																																																																																																							
JACKSON																																																																																																																																																																																																																																																																																																																																																																																																																																																																																																																																																																																																																																																																																																																																																							
MACON																																																																																																																																																																																																																																																																																																																																																																																																																																																																																																																																																																																																																																																																																																																																																							
MADISON																																																																																																																																																																																																																																																																																																																																																																																																																																																																																																																																																																																																																																																																																																																																																							
McDOWELL																																																																																																																																																																																																																																																																																																																																																																																																																																																																																																																																																																																																																																																																																																																																																							
MITCHELL																																																																																																																																																																																																																																																																																																																																																																																																																																																																																																																																																																																																																																																																																																																																																							
POLK																																																																																																																																																																																																																																																																																																																																																																																																																																																																																																																																																																																																																																																																																																																																																							
RUTHERFORD																																																																																																																																																																																																																																																																																																																																																																																																																																																																																																																																																																																																																																																																																																																																																							
SURRY																																																																																																																																																																																																																																																																																																																																																																																																																																																																																																																																																																																																																																																																																																																																																							
SWAIN																																																																																																																																																																																																																																																																																																																																																																																																																																																																																																																																																																																																																																																																																																																																																							
TRANSYLVANIA																																																																																																																																																																																																																																																																																																																																																																																																																																																																																																																																																																																																																																																																																																																																																							
WATAUGA																																																																																																																																																																																																																																																																																																																																																																																																																																																																																																																																																																																																																																																																																																																																																							
WILKES																																																																																																																																																																																																																																																																																																																																																																																																																																																																																																																																																																																																																																																																																																																																																							
YANCEY																																																																																																																																																																																																																																																																																																																																																																																																																																																																																																																																																																																																																																																																																																																																																							
							UNDER CONSTRUCTION																																																																																																																																																																																																																																																																																																																																																																																																																																																																																																																																																																																																																																																																																																																																																
RURAL PROJECTS																																																																																																																																																																																																																																																																																																																																																																																																																																																																																																																																																																																																																																																																																																																																																							
MACON	US 23/US 441	R-5734	US 64 TO SR 1652 (WIDE HORIZON DRIVE)/SR 1152 (BELDEN CIRCLE). IMPLEMENT ACCESS MANAGEMENT STRATEGIES.	0.8	6290		T								R	530																																																																																																																																																																																																																																																																																																																																																																																																																																																																																																																																																																																																																																																																																																																																							

HIGHWAY PROGRAM

										TYPE OF WORK / ESTIMATED COST IN THOUSANDS / PROJECT BREAKS																																																																																																																																																																																																																																																																																																																																																																																																																																																																																																																																																																																																																																																																																																																																																																																																																																																																																																																																																																																																																																																																																																																																																																																																																																																																																																																																																																																																																																																																																																																																																																																																						
COUNTY	ROUTE/CITY	ID NUMBER	LOCATION / DESCRIPTION	LENGTH	TOTAL PROJ COST (THOU)	PRIOR YEARS COST (THOU)	FUNDS	FY 2015	STATE TRANSPORTATION PROGRAM					DEVELOPMENTAL PROGRAM					UNFUNDED																																																																																																																																																																																																																																																																																																																																																																																																																																																																																																																																																																																																																																																																																																																																																																																																																																																																																																																																																																																																																																																																																																																																																																																																																																																																																																																																																																																																																																																																																																																																																																																													
									FY 2016	FY 2017	FY 2018	FY 2019	FY 2020	FY 2021	FY 2022	FY 2023	FY 2024	FY 2025	FUTURE YEARS																																																																																																																																																																																																																																																																																																																																																																																																																																																																																																																																																																																																																																																																																																																																																																																																																																																																																																																																																																																																																																																																																																																																																																																																																																																																																																																																																																																																																																																																																																																																																																																													
<u>URBAN PROJECTS</u>																																																																																																																																																																																																																																																																																																																																																																																																																																																																																																																																																																																																																																																																																																																																																																																																																																																																																																																																																																																																																																																																																																																																																																																																																																																																																																																																																																																																																																																																																																																																																																																																																
MACON	US 441 BUSINESS	U-5604	US 23/US 64/US 441 TO PORTER STREET. INTERSECTION IMPROVEMENTS AT WOMAK STREET, MAPLE STREET, PORTER STREET, AND DEPOT STREET IN FRANKLIN.	1.4	7300		STP									R	1600																																																																																																																																																																																																																																																																																																																																																																																																																																																																																																																																																																																																																																																																																																																																																																																																																																																																																																																																																																																																																																																																																																																																																																																																																																																																																																																																																																																																																																																																																																																																																																																															

DIV - Division Category EX - Exempt Category
HF - State Dollars (Non STI) REG - Regional Category
SW - Statewide Category TRN - Transition Project

</

DIV - Division Category

HF - State Dollars (Non STI)

SW - Statewide Category

EX - Exempt Category

REG - Regional Category

TRN - Transition Project

HIGHWAY PROGRAM

									TYPE OF WORK / ESTIMATED COST IN THOUSANDS / PROJECT BREAKS											
					TOTAL PROJ COST (THOU)	PRIOR YEARS COST (THOU)	FUNDS	FY 2015	STATE TRANSPORTATION PROGRAM					DEVELOPMENTAL PROGRAM					UNFUNDED	
COUNTY	ROUTE/CITY	ID NUMBER	LOCATION / DESCRIPTION	LENGTH					FY 2016	FY 2017	FY 2018	FY 2019	FY 2020	FY 2021	FY 2022	FY 2023	FY 2024	FY 2025	FUTURE YEARS	
<u>ROADSIDE ENVIRONMENTAL PROJECTS (REST AREA)</u>																				
MACON	US 64	S-5102	US 64. MOUNTAIN WATERS SCENIC BYWAY- DRY FALLS. RESTORATION AND IMPROVEMENTS IN THE CULLASAJA GORGE.			256	256													
									UNDER CONSTRUCTION											
<u>INTERSTATE PROJECTS</u>																				
POLK	I-26	I-4729	US 74/NC 108 INTERCHANGE (EXIT 36). REVISE INTERCHANGE AND CONSTRUCT IMPROVEMENTS TO NC 108.			19000		T						R	1400					
		DIV						T						C	17600					
HENDERSON POLK	I-26 / US 74	I-5835	SR 1525 (DANA ROAD) TO 0.1 MILE EAST OF POLK COUNTY LINE. PAVEMENT REHABILITATION.	7.4		6000		NHPIM						C	6000					
		SW																		
<u>RURAL PROJECTS</u>																				
CHEROKEE CLAY GRAHAM HAYWOOD HENDERSON JACKSON MACON POLK SWAIN TRANSYLVANIA	VARIOUS	R-4048	GUARDRAIL INSTALLATION AND SAFETY IMPROVEMENTS.			2519	2519													
									IN PROGRESS - PURCHASE ORDER CONTRACT (POC)											
<u>FEDERAL BRIDGE PROJECTS</u>																				
POLK	SR 1102 (PEARSON FALLS)	B-4792	REPLACE BRIDGE NO. 4 OVER FORK CREEK (SMALL BRANCH OF PACOLET RIVER).			759	69	STPOFF	R	40										
		DIV						STPOFF						C	650					
									DIVISION PURCHASE ORDER CONTRACT (DPOC)											
POLK	SR 1138 (SILVER CREEK ROAD)	B-5896	REPLACE BRIDGE NO. 143 OVER PANTHER CREEK.			260		STPOFF						R	10					
		DIV						STPOFF						C	250					
POLK	SR 1311 (ROCK SPRINGS ROAD)	B-5407	REPLACE BRIDGE NO. 34 OVER WALNUT CREEK.			1800	150	HFB						R	150					
		HF						HFB						C	1500					
POLK	SR 1501 (HUNTING COUNTRY)	B-5916	REPLACE BRIDGE NO. 22 OVER WOLFE CREEK.			300		STPOFF									R	10		
		DIV						STPOFF									C	290		
POLK	SR 1520 (LANDRUM ROAD)	B-4241	REPLACE BRIDGE NO. 24 OVER HOOPER CREEK.			623	623													
		DIV																		
									UNDER CONSTRUCTION - BRIDGE PURCHASE ORDER CONTRACT (BPOC)											

DIV - Division Category
HF - State Dollars (Non STI)
SW - Statewide Category

EX - Exempt Category
REG - Regional Category
TRN - Transition Project

										TYPE OF WORK / ESTIMATED COST IN THOUSANDS / PROJECT BREAKS																
COUNTY	ROUTE/CITY	ID NUMBER	LOCATION / DESCRIPTION	LENGTH	TOTAL PROJ COST (THOU)	PRIOR YEARS COST (THOU)	FUNDS	FY 2015	STATE TRANSPORTATION PROGRAM										DEVELOPMENTAL PROGRAM					UNFUNDED		
									FY 2016	FY 2017	FY 2018	FY 2019	FY 2020	FY 2021	FY 2022	FY 2023	FY 2024	FY 2025	FUTURE YEARS							
FEDERAL BRIDGE PROJECTS																										
CHEROKEE	VARIOUS	BD-5114	DIVISION 14 PURCHASE ORDER CONTRACT		17255	15255	STPOFF	R	200																	
CLAY			BRIDGE REPLACEMENT PROJECTS AT				STPOFF	C	1800																	
GRAHAM			SELECTED LOCATIONS.																							
HAYWOOD																										
HENDERSON																										
JACKSON																										
MACON																										
POLK																										
SWAIN																										
TRANSYLVANIA																										
		DIV																								
									PART UNDER CONSTRUCTION - BRIDGE PURCHASE ORDER CONTRACT (BPOC)																	
MITIGATION PROJECTS																										
CHEROKEE	VARIOUS	EE-4914	ECOSYSTEM ENHANCEMENT PROGRAM FOR		18871	18871																				
CLAY			DIVISION 14 PROJECT MITIGATION.																							
GRAHAM																										
HAYWOOD																										
HENDERSON																										
JACKSON																										
MACON																										
POLK																										
SWAIN																										
TRANSYLVANIA																										
									IN PROGRESS																	
HAZARD ELIMINATION PROJECTS																										
POLK	SR 1151	SF-4914D	SR 1150 TO BRIDGE #202. INSTALL		106	106																				
	(GREEN RIVER		GUARDRAIL ALONG STEEP FILL SECTIONS.																							
	COVE ROAD)																									
									UNDER CONSTRUCTION																	
CHEROKEE	VARIOUS	W-5214	DIVISION 14 RUMBLE STRIPS, GUARDRAIL,		3128	3128																				
CLAY			SAFETY AND LIGHTING IMPROVEMENTS AT																							
GRAHAM			SELECTED LOCATIONS.																							
HAYWOOD																										
HENDERSON																										
JACKSON																										
MACON																										
POLK																										
SWAIN																										
TRANSYLVANIA																										
									IN PRGRESS - DIVISION PURCHASE ORDER CONTRACT (DPOC)																	

										TYPE OF WORK / ESTIMATED COST IN THOUSANDS / PROJECT BREAKS															
COUNTY	ROUTE/CITY	ID NUMBER	LOCATION / DESCRIPTION	LENGTH	TOTAL PROJ COST (THOU)	PRIOR YEARS COST (THOU)	FUNDS	FY 2015	STATE TRANSPORTATION PROGRAM					DEVELOPMENTAL PROGRAM					UNFUNDED						
									FY 2016	FY 2017	FY 2018	FY 2019	FY 2020	FY 2021	FY 2022	FY 2023	FY 2024	FY 2025	FUTURE YEARS						
ENHANCEMENT (CALL PROJECTS)																									
ALLEGHANY	VARIOUS	E-4975	BLUE RIDGE NATIONAL HERITAGE SITES.		576	576																			
ASHE			INTERPRETATIVE AND GATEWAY MARKERS.																						
AVERY																									
BUNCOMBE																									
BURKE																									
CALDWELL																									
CHEROKEE																									
CLAY																									
GRAHAM																									
HAYWOOD																									
HENDERSON																									
JACKSON																									
MACON																									
MADISON																									
McDOWELL																									
MITCHELL																									
POLK																									
RUTHERFORD																									
SURRY																									
SWAIN																									
TRANSYLVANIA																									
WATAUGA																									
WILKES																									
YANCEY																									
										UNDER CONSTRUCTION															
ROADSIDE ENVIRONMENTAL PROJECTS (SCENIC)																									
HENDERSON	VARIOUS	S-5101	PACOLET RIVER BYWAY. COMPREHENSIVE		46	46																			
POLK			BASELINE ASSESSMENT AND STRATEGIC																						
			PLAN FOR BYWAY IN NORTH PACOLET																						
			WATERSHED.																						
										IN PROGRESS															
RURAL PROJECTS																									
SWAIN	NC 28	R-5529	CONSTRUCT HELIPAD ADJACENT TO NC 28		71	71																			
		EX	NEAR TSALI FOREST SERVICE																						
			RECREATIONAL AREA. FEDERAL AID																						
			NUMBER NC FLAP SWN HPAD(1)																						
										UNDER CONSTRUCTION - FEDERAL LANDS ACCESS PROGRAM (FLAP) PROJECT															
JACKSON	VARIOUS	R-5500	INDIAN RESERVATION ROAD (IRR)		5672		FLPI	C	5672																
SWAIN			PROGRAM. ROAD AND BRIDGE																						
		EX	IMPROVEMENTS TO BE CONSTRUCTED BY																						
			EASTERN BAND OF CHEROKEE INDIANS.																						
CHEROKEE	VARIOUS	R-4048	GUARDRAIL INSTALLATION AND SAFETY		2519	2519																			
CLAY			IMPROVEMENTS.																						
GRAHAM																									
HAYWOOD																									
HENDERSON																									
JACKSON																									
MACON																									
POLK																									
SWAIN																									
TRANSYLVANIA																									
										IN PROGRESS - PURCHASE ORDER CONTRACT (POC)															

DIVISION 14

DIV - Division Category	EX - Exempt Category
HF - State Dollars (Non STI)	REG - Regional Category
SW - Statewide Category	TRN - Transition Project

										TYPE OF WORK / ESTIMATED COST IN THOUSANDS / PROJECT BREAKS																																																																																																																																																																																																																																																																																																																																																																																																																																																																																																																																																																																																																																																																																																																																																																																																																																																																																																																																																																																																																																																																																																																																																																																																																																																																																																						
COUNTY	ROUTE/CITY	ID NUMBER	LOCATION / DESCRIPTION	LENGTH	TOTAL PROJ COST (THOU)	PRIOR YEARS COST (THOU)	FUNDS	FY 2015	STATE TRANSPORTATION PROGRAM					DEVELOPMENTAL PROGRAM					UNFUNDED																																																																																																																																																																																																																																																																																																																																																																																																																																																																																																																																																																																																																																																																																																																																																																																																																																																																																																																																																																																																																																																																																																																																																																																																																																																																																													
									FY 2016	FY 2017	FY 2018	FY 2019	FY 2020	FY 2021	FY 2022	FY 2023	FY 2024	FY 2025	FUTURE YEARS																																																																																																																																																																																																																																																																																																																																																																																																																																																																																																																																																																																																																																																																																																																																																																																																																																																																																																																																																																																																																																																																																																																																																																																																																																																																																													
HAZARD ELIMINATION PROJECTS																																																																																																																																																																																																																																																																																																																																																																																																																																																																																																																																																																																																																																																																																																																																																																																																																																																																																																																																																																																																																																																																																																																																																																																																																																																																																																																
CHEROKEE CLAY GRAHAM HAYWOOD HENDERSON JACKSON MACON POLK SWAIN TRANSYLVANIA	VARIOUS	W-5214	DIVISION 14 RUMBLE STRIPS, GUARDRAIL, SAFETY AND LIGHTING IMPROVEMENTS AT SELECTED LOCATIONS.		3128	3128																																																																																																																																																																																																																																																																																																																																																																																																																																																																																																																																																																																																																																																																																																																																																																																																																																																																																																																																																																																																																																																																																																																																																																																																																																																																																																										

										TYPE OF WORK / ESTIMATED COST IN THOUSANDS / PROJECT BREAKS																	
COUNTY	ROUTE/CITY	ID NUMBER	LOCATION / DESCRIPTION	LENGTH	TOTAL PROJ COST (THOU)	PRIOR YEARS COST (THOU)	FUNDS	FY 2015	STATE TRANSPORTATION PROGRAM					DEVELOPMENTAL PROGRAM					UNFUNDED								
									FY 2016	FY 2017	FY 2018	FY 2019	FY 2020	FY 2021	FY 2022	FY 2023	FY 2024	FY 2025	FUTURE YEARS								
ENHANCEMENT (CALL PROJECTS)																											
ALLEGHANY	VARIOUS	E-4975	BLUE RIDGE NATIONAL HERITAGE SITES.		576	576																					
ASHE			INTERPRETATIVE AND GATEWAY MARKERS.																								
AVERY																											
BUNCOMBE																											
BURKE																											
CALDWELL																											
CHEROKEE																											
CLAY																											
GRAHAM																											
HAYWOOD																											
HENDERSON																											
JACKSON																											
MACON																											
MADISON																											
McDOWELL																											
MITCHELL																											
POLK																											
RUTHERFORD																											
SURRY																											
SWAIN																											
TRANSYLVANIA																											
WATAUGA																											
WILKES																											
YANCEY																											
							UNDER CONSTRUCTION																				
RURAL PROJECTS																											
TRANSYLVANIA	US 64	R-2702	TWO LANES ON MULTI-LANE RIGHT OF WAY.	4.8	27000		STP																	R	7100		
	BREVARD BYPASS						STP																		C	19900	
							FEASIBILITY STUDY REEVALUATION IN PROGRESS																				
JACKSON	US 64	R-2409	NC 107 AT CASHIERS TO US 178 AT		22931	12581	HP	C	4350	C															R		
TRANSYLVANIA			ROSMAN. SAFETY IMPROVEMENTS AND				STP																			C	1000
			CLIMBING LANES AT SELECTED LOCATIONS.				STP																			D	
							A CASHIERS TO JACKSON-TRANSYLVANIA COUNTY LINE - COMPLETE																				
							B 1.1 MILES EAST OF CASHIERS TO 1.6 MILES EAST OF CASHIERS - COMPLETE																				
							TRN C WEST OF NC 281 N NEAR LAKE TOXAWAY TO INDIAN CREEK. WIDENING AND REALIGNMENT. - RIGHT OF WAY IN PROGRESS																				
							D INDIAN CREEK TO FLAT CREEK VALLEY ROAD. WIDENING AND REALIGNMENT																				
							DIVISION PROJECT - PLANNING/DESIGN IN PROGRESS																				
TRANSYLVANIA	SR 1540	FS-1514A	SR 1504 (OLD US 64) TO US 276. UPGRADE	3.7																							
	(WILSON ROAD)		ROADWAY.																								
							SCHEDULED FOR FEASIBILITY STUDY																				
TRANSYLVANIA	NEW ROUTE	R-5743	US 64/US 276 TO US 64. CONSTRUCT NEW	2.7	26050		T																				
			ROUTE				T																				
							T																				
							DIV																				
CHEROKEE	VARIOUS	R-4048	GUARDRAIL INSTALLATION AND SAFETY		2519	2519																					
CLAY			IMPROVEMENTS.																								
GRAHAM																											
HAYWOOD																											
HENDERSON																											
JACKSON																											
MACON																											
POLK																											
SWAIN																											
TRANSYLVANIA																											
							IN PROGRESS - PURCHASE ORDER CONTRACT (POC)																				

DIV - Division CategoryEX - Exempt Category
HF - State Dollars (Non STI)REG - Regional Category
SW - Statewide CategoryTRN - Transition Project

HIGHWAY PROGRAM

										TYPE OF WORK / ESTIMATED COST IN THOUSANDS / PROJECT BREAKS																																																																																																																																																																																																																																																																																																																																																																																																																																																																																																																																																																																																																																																																																																																																																																																																																																																																																																																																																																																																																																																																																																																																																																																																																																																																																												
COUNTY	ROUTE/CITY	ID NUMBER	LOCATION / DESCRIPTION	LENGTH	TOTAL PROJ COST (THOU)	PRIOR YEARS COST (THOU)	FUNDS	FY 2015	STATE TRANSPORTATION PROGRAM										DEVELOPMENTAL PROGRAM					UNFUNDED																																																																																																																																																																																																																																																																																																																																																																																																																																																																																																																																																																																																																																																																																																																																																																																																																																																																																																																																																																																																																																																																																																																																																																																																																																																																														
									FY 2016	FY 2017	FY 2018	FY 2019	FY 2020	FY 2021	FY 2022	FY 2023	FY 2024	FY 2025	FUTURE YEARS																																																																																																																																																																																																																																																																																																																																																																																																																																																																																																																																																																																																																																																																																																																																																																																																																																																																																																																																																																																																																																																																																																																																																																																																																																																																																			
RURAL PROJECTS																																																																																																																																																																																																																																																																																																																																																																																																																																																																																																																																																																																																																																																																																																																																																																																																																																																																																																																																																																																																																																																																																																																																																																																																																																																																																																						
TRANSYLVANIA	DAVIDSON RIVER VILLAGE CONNECTOR	R-5605	US 64 TO US 276/US 64 IN PISGAH FOREST.	0.8	10700		T																																																																																																																																																																																																																																																																																																																																																																																																																																																																																																																																																																																																																																																																																																																																																																																																																																																																																																																																																																																																																																																																																																																																																																																																																																																																																															

DIV - Division Category EX - Exempt Category
HF - State Dollars (Non STI) REG - Regional Category
SW - Statewide Category TRN - Transition Project

										TYPE OF WORK / ESTIMATED COST IN THOUSANDS / PROJECT BREAKS																		
COUNTY	ROUTE/CITY	ID NUMBER	LOCATION / DESCRIPTION	LENGTH	TOTAL PROJ COST (THOU)	PRIOR YEARS COST (THOU)	FUNDS	FY 2015	STATE TRANSPORTATION PROGRAM										DEVELOPMENTAL PROGRAM					UNFUNDED				
									FY 2016	FY 2017	FY 2018	FY 2019	FY 2020	FY 2021	FY 2022	FY 2023	FY 2024	FY 2025	FUTURE YEARS									
FEDERAL BRIDGE PROJECTS																												
CHEROKEE	VARIOUS	BD-5114	DIVISION 14 PURCHASE ORDER CONTRACT		17255	15255	STPOFF	R	200																			
CLAY			BRIDGE REPLACEMENT PROJECTS AT				STPOFF	C	1800																			
GRAHAM			SELECTED LOCATIONS.																									
HAYWOOD																												
HENDERSON																												
JACKSON																												
MACON																												
POLK																												
SWAIN																												
TRANSYLVANIA																												
		DIV																										
PART UNDER CONSTRUCTION - BRIDGE PURCHASE ORDER CONTRACT (BPOC)																												
MUNICIPAL BRIDGE PROJECTS																												
TRANSYLVANIA	BREVARD	B-5550	RAILROAD AVENUE OVER KINGS CREEK.		883	83	STPON	R	120																			
			REPLACE BRIDGE NO. 102.				L	R	30																			
							STPON				C	520																
							L				C	130																
		DIV																										
PLANNING/DESIGN BY CITY OF BREVARD																												
MITIGATION PROJECTS																												
CHEROKEE	VARIOUS	EE-4914	ECOSYSTEM ENHANCEMENT PROGRAM FOR		18871	18871																						
CLAY			DIVISION 14 PROJECT MITIGATION.																									
GRAHAM																												
HAYWOOD																												
HENDERSON																												
JACKSON																												
MACON																												
POLK																												
SWAIN																												
TRANSYLVANIA																												
IN PROGRESS																												
HAZARD ELIMINATION PROJECTS																												
CHEROKEE	VARIOUS	W-5214	DIVISION 14 RUMBLE STRIPS, GUARDRAIL,		3128	3128																						
CLAY			SAFETY AND LIGHTING IMPROVEMENTS AT																									
GRAHAM			SELECTED LOCATIONS.																									
HAYWOOD																												
HENDERSON																												
JACKSON																												
MACON																												
POLK																												
SWAIN																												
TRANSYLVANIA																												
IN PROGRESS																												
IN PROGRESS - DIVISION PURCHASE ORDER CONTRACT (DPOC)																												
CONGESTION MITIGATION PROJECTS																												
BUNCOMBE	VARIOUS	C-5564	LAND OF SKY RPO TO WORK WITH		172	52	CMAQ	I	65		I	30																
HAYWOOD			REGIONAL CLEAN AIR CAMPAIGN AND				L	I	17		I	8																
MADISON			CLEAN VEHICLE COALITION TO IMPLEMENT																									
TRANSYLVANIA			AN EDUCATIONAL AND OUTREACH																									
		EX	PROGRAM IN COMMUNITIES ADJACENT TO																									
			GREAT SMOKY MOUNTAINS NATIONAL																									
			PARK.																									
IN PROGRESS																												

DIV - Division CategoryEX - Exempt Category
HF - State Dollars (Non STI)REG - Regional Category
SW - Statewide CategoryTRN - Transition Project

										TYPE OF WORK / ESTIMATED COST IN THOUSANDS / PROJECT BREAKS										
COUNTY	ROUTE/CITY	ID NUMBER	LOCATION / DESCRIPTION	LENGTH	TOTAL PROJ COST (THOU)	PRIOR YEARS COST (THOU)	FUNDS	FY 2015	STATE TRANSPORTATION PROGRAM					DEVELOPMENTAL PROGRAM					UNFUNDED	
									FY 2016	FY 2017	FY 2018	FY 2019	FY 2020	FY 2021	FY 2022	FY 2023	FY 2024	FY 2025	FUTURE YEARS	
ENHANCEMENT (CALL PROJECTS)																				
ALLEGHANY	VARIOUS	E-4975	BLUE RIDGE NATIONAL HERITAGE SITES.		576	576														
ASHE			INTERPRETATIVE AND GATEWAY MARKERS.																	
AVERY																				
BUNCOMBE																				
BURKE																				
CALDWELL																				
CHEROKEE																				
CLAY																				
GRAHAM																				
HAYWOOD																				
HENDERSON																				
JACKSON																				
MACON																				
MADISON																				
McDOWELL																				
MITCHELL																				
POLK																				
RUTHERFORD																				
SURRY																				
SWAIN																				
TRANSYLVANIA																				
WATAUGA																				
WILKES																				
YANCEY																				
UNDER CONSTRUCTION																				

			TYPE OF WORK / ESTIMATED COST IN THOUSANDS / PROJECT BREAKS																				
COUNTY	ROUTE / CITY / TRANSIT PARTNER	ID NUMBER	LOCATION / DESCRIPTION	TOTAL PROJECT COST (THOU)	PRIOR YEARS COST (THOU)	FUNDS	STATE TRANSPORTATION IMPROVEMENT PROGRAM						DEVELOPMENTAL PROGRAM					UNFUNDED					
							FY 2015	FY 2016	FY 2017	FY 2018	FY 2019	FY 2020	FY 2021	FY 2022		FY 2023	FY 2024	FY 2025	FUTURE YEARS				
DURHAM	DURHAM AREA TRANSIT AUTHORITY	TA-4738	PASSENGER AMENITIES - BUS STOP SHELTERS, BENCHES, SHOP EQUIPMENT SPARE PARTS, ENGINES, SERVICE VEHICLES, ETC.			FUZCP FUZCP	4000	A															
							700	A															

NON HIGHWAY PROGRAM

										TYPE OF WORK / ESTIMATED COST IN THOUSANDS / PROJECT BREAKS																																																																																																																																																																																																																																																																																																																																																																																																																																																																																																																																																																																																																																																																																																																																																																																																																																																																																																																																																																																																																																																																																																																																																																																																																																																																																											
COUNTY	ROUTE/CITY	ID NUMBER	LOCATION / DESCRIPTION	LENGTH	TOTAL PROJ COST (THOU)	PRIOR YEARS COST (THOU)	FUNDS	FY 2015	STATE TRANSPORTATION PROGRAM										DEVELOPMENTAL PROGRAM					UNFUNDED																																																																																																																																																																																																																																																																																																																																																																																																																																																																																																																																																																																																																																																																																																																																																																																																																																																																																																																																																																																																																																																																																																																																																																																																																																																																													
									FY 2016	FY 2017	FY 2018	FY 2019	FY 2020	FY 2021	FY 2022	FY 2023	FY 2024	FY 2025	FUTURE YEARS																																																																																																																																																																																																																																																																																																																																																																																																																																																																																																																																																																																																																																																																																																																																																																																																																																																																																																																																																																																																																																																																																																																																																																																																																																																																																		
BICYCLE AND PEDESTRIAN PROJECTS																																																																																																																																																																																																																																																																																																																																																																																																																																																																																																																																																																																																																																																																																																																																																																																																																																																																																																																																																																																																																																																																																																																																																																																																																																																																																																					
CHEROKEE	CAMPUS OF MURPHY MIDDLE SCHOOL	EB-5735	SR 1649 (BULLDOG DRIVE) TO SR 1680 (MURPHY MIDDLE SCHOOL DRIVE). CONSTRUCT SIDEWALK.	0.2	225	TAP																																																																																																																																																																																																																																																																																																																																																																																																																																																																																																																																																																																																																																																																																																																																																																																																																																																																																																																																																																																																																																																																																																																																																																																																																																																																																															

DIV - Division Category EX - Exempt Category
HF - State Dollars (Non STI) REG - Regional Category
SW - Statewide Category TRN - Transition Project

NON HIGHWAY PROGRAM

										TYPE OF WORK / ESTIMATED COST IN THOUSANDS / PROJECT BREAKS																																																																																																																																																																																																																																																																																																																																																																																																																																																																																																																																																																																																																																																																																																																																																																																																																																																																																																																																																																																																																																																																																																																																																																																																																																																																																								
COUNTY	ROUTE/CITY	ID NUMBER	LOCATION / DESCRIPTION	LENGTH	TOTAL PROJ COST (THOU)	PRIOR YEARS COST (THOU)	FUNDS	FY 2015	STATE TRANSPORTATION PROGRAM										DEVELOPMENTAL PROGRAM										UNFUNDED																																																																																																																																																																																																																																																																																																																																																																																																																																																																																																																																																																																																																																																																																																																																																																																																																																																																																																																																																																																																																																																																																																																																																																																																																																																																					
									FY 2016	FY 2017	FY 2018	FY 2019	FY 2020	FY 2021	FY 2022	FY 2023	FY 2024	FY 2025	FUTURE YEARS																																																																																																																																																																																																																																																																																																																																																																																																																																																																																																																																																																																																																																																																																																																																																																																																																																																																																																																																																																																																																																																																																																																																																																																																																																																																															
PUBLIC TRANSPORTATION PROJECTS																																																																																																																																																																																																																																																																																																																																																																																																																																																																																																																																																																																																																																																																																																																																																																																																																																																																																																																																																																																																																																																																																																																																																																																																																																																																																																		
CLAY	CLAY COUNTY	TQ-6178	MOBILITY MANAGEMENT		72				FEPD	CP	58																																																																																																																																																																																																																																																																																																																																																																																																																																																																																																																																																																																																																																																																																																																																																																																																																																																																																																																																																																																																																																																																																																																																																																																																																																																																																							</

DIV - Division Category
HF - State Dollars (Non STI)
SW - Statewide Category

EX - Exempt Category
REG - Regional Category
TRN - Transition Project

NON HIGHWAY PROGRAM

										TYPE OF WORK / ESTIMATED COST IN THOUSANDS / PROJECT BREAKS																																																																																																																																																																																																																																																																																																																																																																																																																																																																																																																																																																																																																																																																																																																																																																																																																																																																																																																																																																																																																																																																																																																																																																																																																																																																																														
COUNTY	ROUTE/CITY	ID NUMBER	LOCATION / DESCRIPTION	LENGTH	TOTAL PROJ COST (THOU)	PRIOR YEARS COST (THOU)	FUNDS	FY 2015	STATE TRANSPORTATION PROGRAM										DEVELOPMENTAL PROGRAM										UNFUNDED																																																																																																																																																																																																																																																																																																																																																																																																																																																																																																																																																																																																																																																																																																																																																																																																																																																																																																																																																																																																																																																																																																																																																																																																																																																																											
									FY 2016	FY 2017	FY 2018	FY 2019	FY 2020	FY 2021	FY 2022	FY 2023	FY 2024	FY 2025	FUTURE YEARS																																																																																																																																																																																																																																																																																																																																																																																																																																																																																																																																																																																																																																																																																																																																																																																																																																																																																																																																																																																																																																																																																																																																																																																																																																																																																					
PUBLIC TRANSPORTATION PROJECTS																																																																																																																																																																																																																																																																																																																																																																																																																																																																																																																																																																																																																																																																																																																																																																																																																																																																																																																																																																																																																																																																																																																																																																																																																																																																																																								
HAYWOOD	MOUNTAIN PROJECTS, INC.	TQ-6183	MOBILITY MANAGEMENT		127				FEPD	CP	101																																																																																																																																																																																																																																																																																																																																																																																																																																																																																																																																																																																																																																																																																																																																																																																																																																																																																																																																																																																																																																																																																																																																																																																																																																																																																													

DIV - Division Category
HF - State Dollars (Non STI)
SW - Statewide Category

EX - Exempt Category
REG - Regional Category
TRN - Transition Project

NON HIGHWAY PROGRAM

										TYPE OF WORK / ESTIMATED COST IN THOUSANDS / PROJECT BREAKS																			
COUNTY	ROUTE/CITY	ID NUMBER	LOCATION / DESCRIPTION	LENGTH	TOTAL PROJ COST (THOU)	PRIOR YEARS COST (THOU)	FUNDS	FY 2015	STATE TRANSPORTATION PROGRAM										DEVELOPMENTAL PROGRAM					UNFUNDED					
									FY 2016	FY 2017	FY 2018	FY 2019	FY 2020	FY 2021	FY 2022	FY 2023	FY 2024	FY 2025	FUTURE YEARS										
PUBLIC TRANSPORTATION PROJECTS																													
CHEROKEE GRAHAM JACKSON SWAIN	EASTERN BAND OF CHEROKEE INDIANS	TA-6163	CAPITAL		338	127	FNU	CP	211																				
HF																													
CHEROKEE GRAHAM JACKSON SWAIN	EASTERN BAND OF CHEROKEE INDIANS	TK-6127	ADMINISTRATION		1644	484	FNU	O	232	O	116	O	116	O	116	O	116	O	116	O	116								
HF																													
JACKSON	JACKSON COUNTY	TA-6266	CAPITAL		335	58	FNU	CP	277																				
HF																													
JACKSON	JACKSON COUNTY	TK-6137	ADMINISTRATION		2632	752	FNU	O	376	O	188	O	188	O	188	O	188	O	188	O	188								
HF																													
JACKSON	JACKSON COUNTY	TQ-6179	OPERATING ASSISTANCE		276		FEPD	O	138																				
HF																													
JACKSON	JACKSON COUNTY	TQ-7180	MOBILITY MANAGEMENT		77		FEPD	CP	61																				
HF																													
JACKSON	TRANSPORTATION ADMIN. OF CLEVELAND COUNTY	TA-6192	REPLACEMENT VAN		457	177	FNU	CP	280																				
HF																													
BICYCLE AND PEDESTRIAN PROJECTS																													
MACON	SR 1729 (DEPOT STREET)	EB-5756	US 441 BUSINESS (EAST MAIN STREET) TO SR 1667 (WAYAH STREET). CONSTRUCT MISSING SECTIONS OF SIDEWALK ALONG WEST SIDE AND CONSTRUCT NEW SIDEWALK ALONG EAST SIDE.	0.6	294		TAP																						
DIV																													
PUBLIC TRANSPORTATION PROJECTS																													
MACON	MACON COUNTY	TA-6198	CAPITAL		39	28	FNU	CP	11																				
HF																													
MACON	MACON COUNTY	TA-6530	CAPITAL		7		FEPD	CP	5																				
HF																													
MACON	MACON COUNTY	TK-6142	ADMINISTRATION		2815	907	FNU	O	380	O	191	O	191	O	191	O	191	O	191	O	191								
HF																													
MACON	MACON COUNTY	TN-6123	SECTION 5317 OPERATING		40		FNF	O	40																				
HF																													
MACON	MACON COUNTY	TQ-8006	MACON COUNTY 5317 CAPITAL		9		FNF	CP	7																				
HF																													
MACON	MACON COUNTY	TQ-6781	OPERATING ASSISTANCE		356		FEPD	O	178																				
HF																													

DIV - Division Category EX - Exempt Category
HF - State Dollars (Non STI) REG - Regional Category
SW - Statewide Category TRN - Transition Project

NON HIGHWAY PROGRAM

										TYPE OF WORK / ESTIMATED COST IN THOUSANDS / PROJECT BREAKS																					
COUNTY	ROUTE/CITY	ID NUMBER	LOCATION / DESCRIPTION	LENGTH	TOTAL PROJ COST (THOU)	PRIOR YEARS COST (THOU)	FUNDS	FY 2015	STATE TRANSPORTATION PROGRAM										DEVELOPMENTAL PROGRAM					UNFUNDED							
									FY 2016	FY 2017	FY 2018	FY 2019	FY 2020	FY 2021	FY 2022	FY 2023	FY 2024	FY 2025	FUTURE YEARS												
BICYCLE AND PEDESTRIAN PROJECTS																															
POLK	PENIEL ROAD	EB-5759	WALKER ROAD TO WHEELER ROAD. CONSTRUCT SIDEWALK.	0.4	250	TAP																									
						L																									
						L																									
						TAP																									
						L																									
DIV																															
PUBLIC TRANSPORTATION PROJECTS																															
POLK	POLK COUNTY TRANSPORTATION	TA-6208	CAPITAL		595	197	FNU	CP	318																						
							L	CP	40																						
							S	CP	40																						
HF																															
POLK	POLK COUNTY TRANSPORTATION	TK-6155	ADMINISTRATION		2679	736	FNU	O	471																						
							FNU																								
HF																															
BICYCLE AND PEDESTRIAN PROJECTS																															
SWAIN	SR 1364 (FONTANA DRIVE)	EB-5737	DOWNTOWN BRYSON CITY TO SWAIN COUNTY HIGH SCHOOL. CONSTRUCT MULTI- USE PATH.	1.3	448	TAP																									
						L																									
						L																									
						TAP																									
						L																									
DIV																															
SWAIN	SR 1378 (ACQUONI ROAD)	EB-5758	US 441 END OF SIDEWALK TO ACQUONI ROAD END OF SIDEWALK. CONSTRUCT SIDEWALK, CURB CUTS, AND PEDESTRIAN SIGNALS.	0.1	100	TAP																									
						L																									
						TAP																									
						L																									
DIV																															
PUBLIC TRANSPORTATION PROJECTS																															
CHEROKEE GRAHAM JACKSON SWAIN	EASTERN BAND OF CHEROKEE INDIANS	TA-6163	CAPITAL		338	127	FNU	CP	211																						
							HF																								
CHEROKEE GRAHAM JACKSON SWAIN	EASTERN BAND OF CHEROKEE INDIANS	TK-6127	ADMINISTRATION		1644	484	FNU	O	232																						
							FNU																								
HF																															
SWAIN	SWAIN COUNTY FOCAL POINT ON AGING, INC.	TA-6532	CAPITAL		5	FEPD	CP	3																							
						L	CP	1																							
						S	CP	1																							
HF																															
SWAIN	SWAIN COUNTY FOCAL POINT ON AGING, INC.	TA-6545	CAPITAL		2400	FNU	CP	1920																							
						L	CP	240																							
						S	CP	240																							
HF																															
SWAIN	SWAIN COUNTY FOCAL POINT ON AGING, INC.	TA-6557	CAPITAL		2400	FNU	CP	1920																							
						L	CP	240																							
						S	CP	240																							
HF																															
SWAIN	SWAIN COUNTY FOCAL POINT ON AGING, INC.	TK-6165	ADMINISTRATION		1784	514	FNU	O	204																						
							FNU																								
							L	O	38																						
							S	O	12																						
HF																															

DIV - Division Category

HF - State Dollars (Non STI)

SW - Statewide Category

EX - Exempt Category

REG - Regional Category

TRN - Transition Project

NON HIGHWAY PROGRAM

										TYPE OF WORK / ESTIMATED COST IN THOUSANDS / PROJECT BREAKS																																																																																																																																																																																																																																																																																																																																																																																																																																																																																																																																																																																																																																																																																																																																																																																																																																																																																																																																																																																																																																																																																																																																																																																																																																																																																																															
COUNTY	ROUTE/CITY	ID NUMBER	LOCATION / DESCRIPTION	LENGTH	TOTAL PROJ COST (THOU)	PRIOR YEARS COST (THOU)	FUNDS	FY 2015	STATE TRANSPORTATION PROGRAM										DEVELOPMENTAL PROGRAM					UNFUNDED																																																																																																																																																																																																																																																																																																																																																																																																																																																																																																																																																																																																																																																																																																																																																																																																																																																																																																																																																																																																																																																																																																																																																																																																																																																																																																	
									FY 2016	FY 2017	FY 2018	FY 2019	FY 2020	FY 2021	FY 2022	FY 2023	FY 2024	FY 2025	FUTURE YEARS																																																																																																																																																																																																																																																																																																																																																																																																																																																																																																																																																																																																																																																																																																																																																																																																																																																																																																																																																																																																																																																																																																																																																																																																																																																																																																						
PUBLIC TRANSPORTATION PROJECTS																																																																																																																																																																																																																																																																																																																																																																																																																																																																																																																																																																																																																																																																																																																																																																																																																																																																																																																																																																																																																																																																																																																																																																																																																																																																																																																									
SWAIN	SWAIN COUNTY FOCAL POINT ON AGING, INC.	TQ-6184	MOBILITY MANAGEMENT		59		FEPD	CP	47																																																																																																																																																																																																																																																																																																																																																																																																																																																																																																																																																																																																																																																																																																																																																																																																																																																																																																																																																																																																																																																																																																																																																																																																																																																																																																																

DIV - Division Category EX - Exempt Category
HF - State Dollars (Non STI) REG - Regional Category
SW - Statewide Category TRN - Transition Project