



**NORTH CAROLINA**  
Department of Transportation



# N.C. Strategic Transportation Corridors Master Plans

## Jacksonville to Greenville (Corridor X)

2018 Greenville Urban Area MPO TAC and TCC Meetings

# Strategic Transportation Corridors

## Goals

**System Connectivity:** Provide essential connections to national transportation networks critical to interstate commerce and national defense;

**Mobility:** Facilitate significant high-volume, inter-regional movements of people and goods across the state; and

**Economic Prosperity:** Support economic development and efficiency of transport logistics for economic regions and clusters of activity centers.

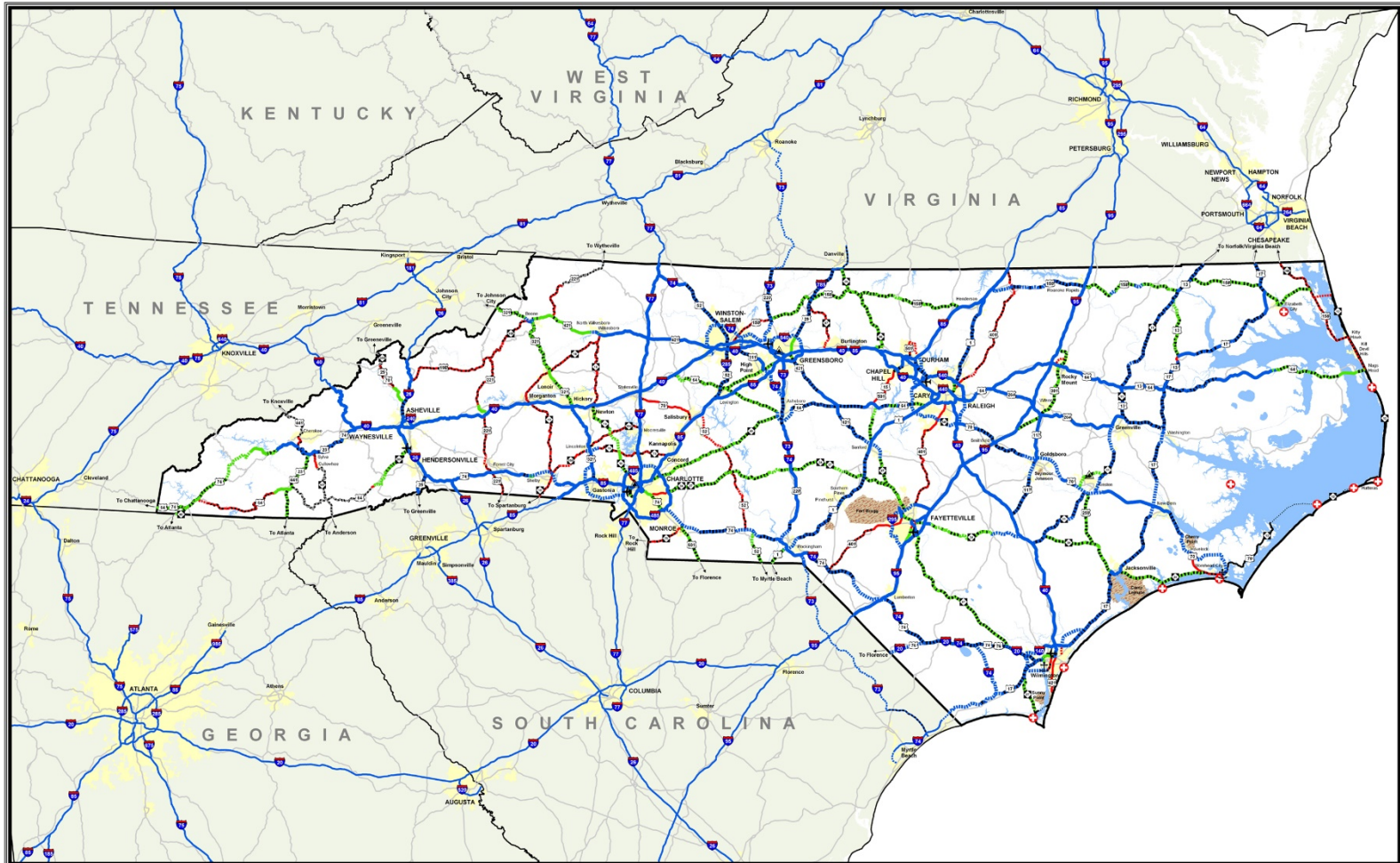


# Strategic Highway Corridors vs. Strategic Transportation Corridors

SHC	STC
Identified vision	Collaborative vision
55 corridors	25 corridors
Vehicle-focused	Multimodal



# Strategic Highway Corridors

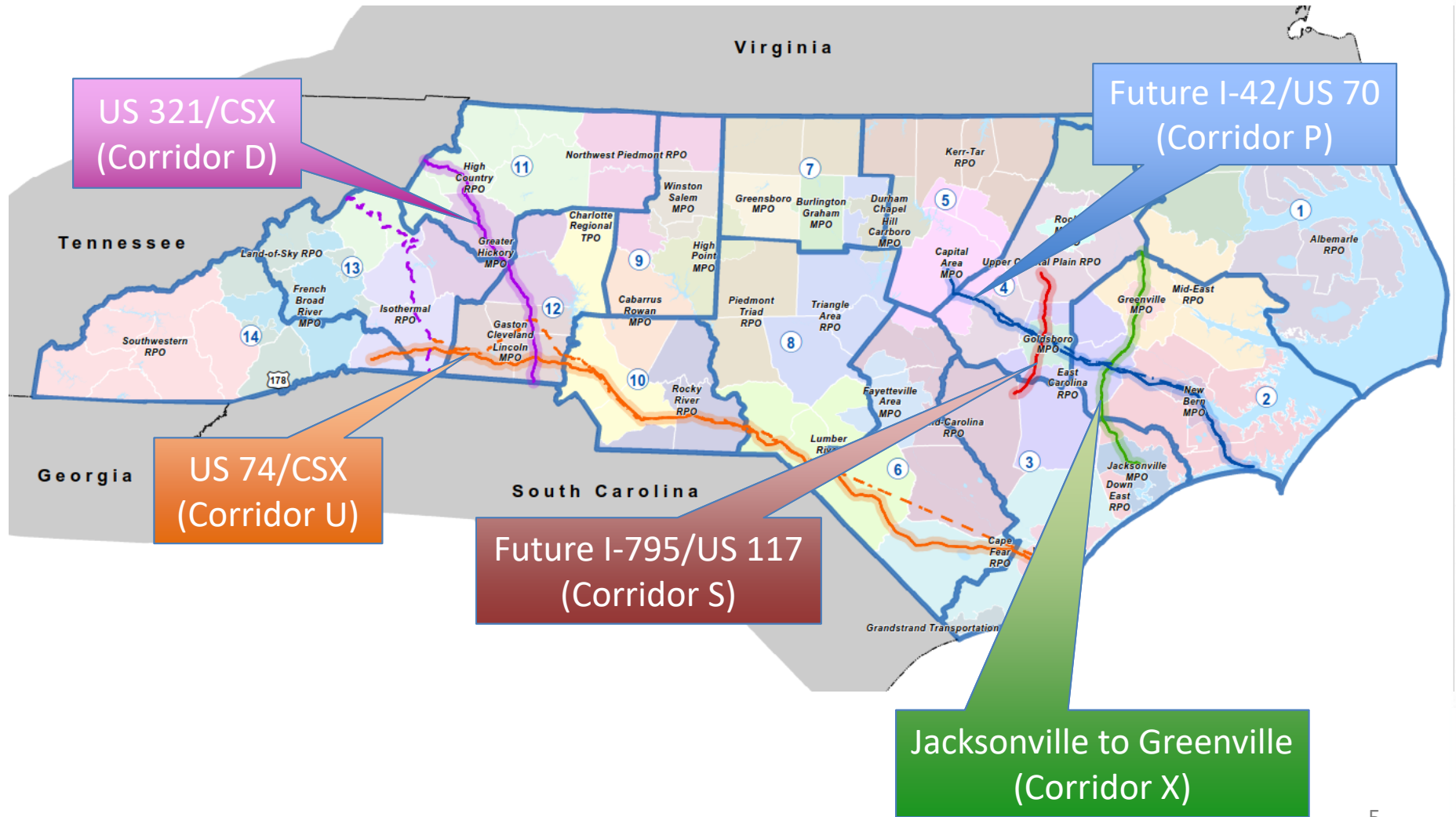


**Vision Plan**  
 Adopted by The North Carolina Board of Transportation  
 Plan Date: September 2, 2004  
 Revised: July 10, 2008



Strategic Highway Corridors		Legend	
<b>Freeways</b>	<b>Boulevards</b>	— US/Other Route	— Statewide Tier Ferry Route
— Existing	— Existing	⚓ State Port	✈ Major Airport
— Needs Upgrade	— Needs Upgrade	⚓ Intermodal Connector	⚓ Coast Guard Station
— Recommended	— Recommended	⚓ Major Military Base	⚓ Urban Area
<b>Expressways</b>	<b>Thoroughfares</b>	⚓ Water Features	
— Existing	— Existing		
— Needs Upgrade	— Needs Upgrade		
— Recommended	— Recommended		

# Initial Corridors



US 321/CSX  
(Corridor D)

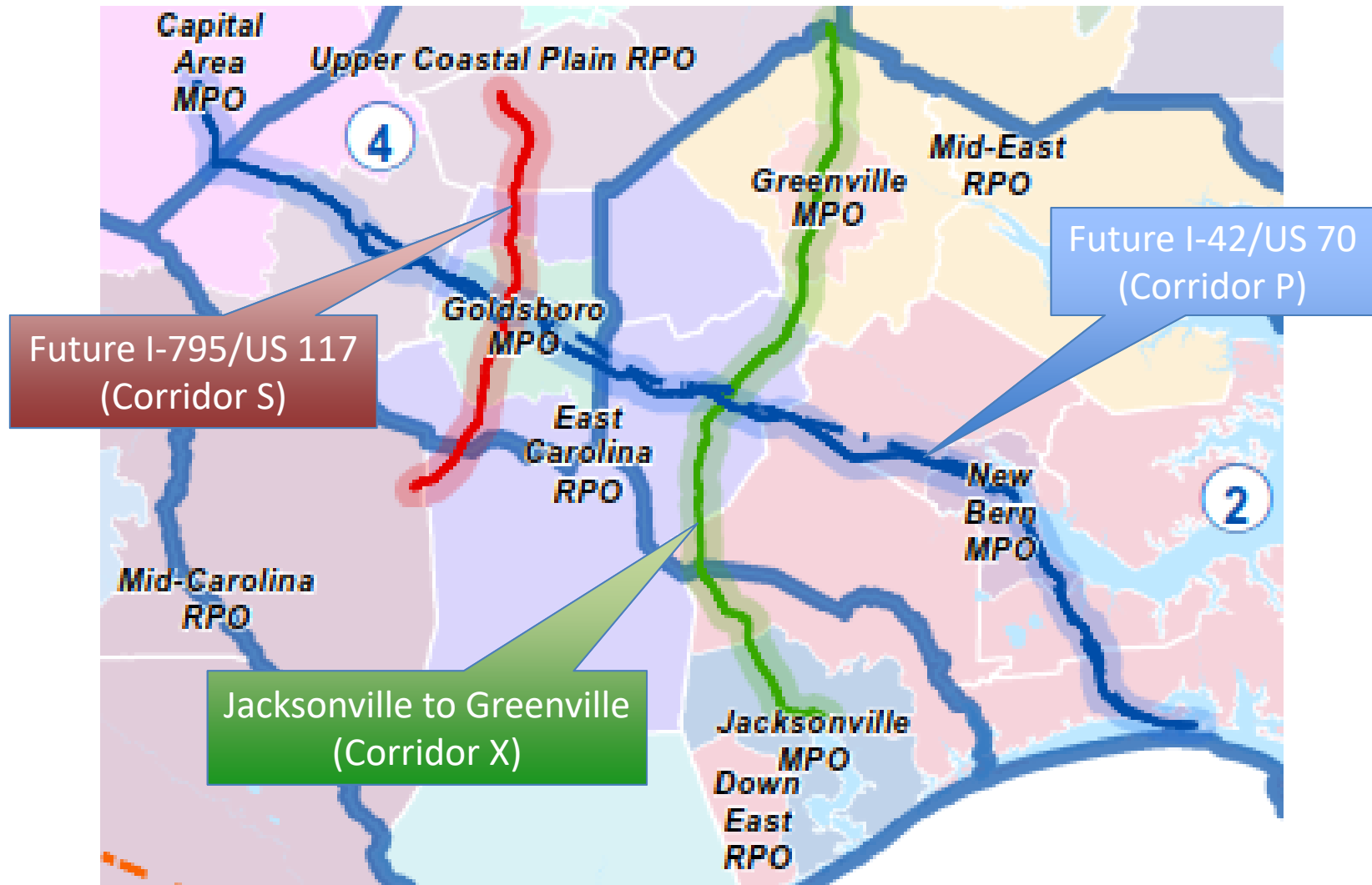
Future I-42/US 70  
(Corridor P)

US 74/CSX  
(Corridor U)

Future I-795/US 117  
(Corridor S)

Jacksonville to Greenville  
(Corridor X)

# Initial Corridors: Bundle 1



# Jacksonville to Greenville

(Corridor X)

US 258 – NC 11 – US 13  
*US 17 to US 64*

- Not viewed as a consistent, cohesive corridor
- No previous studies done on this corridor as a whole

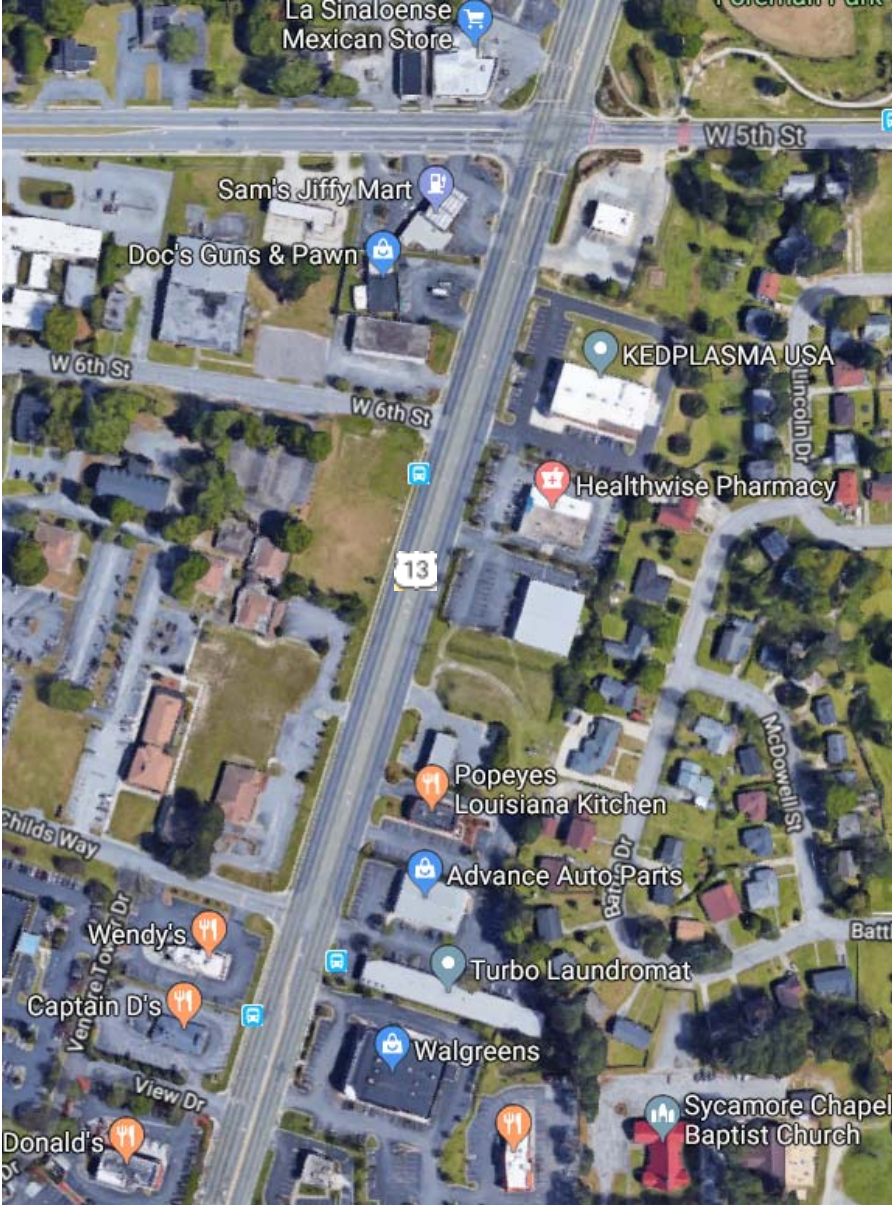




# Existing Uses

- Mix of 2-lane undivided and 4-lane divided
- Uncontrolled intersections
- Connects Jacksonville, Kinston, and Greenville
- Carries military traffic from Jacksonville to Camp Lejeune
- Carries heavy traffic to Global TransPark









# Corridor Inspections

- Physical/environmental constraints
- Travel experience
- Major connections
- Major land uses





# Data Collection

- Previous studies and STIP projects
- Local transportation and land use plans
- Mapping (GIS) data
- Travel demand models
- Ports, airports, and transit inventory
- Bicycle inventory / bike & ped plans
- Travel markets and freight flows



# Agency Engagement

- Corridor Steering Committee
  - MPO/RPO staff
  - NCDOT disciplines and Divisions
  - FHWA
  - USMC, Ports, Global TransPark
- Meetings with MPO/RPO
  - Staff (March 2018)
  - Jacksonville Urban Area MPO TAC (June 14)
  - Jacksonville Urban Area MPO TCC (May 10)

# Stakeholder Engagement

Municipal  
and County  
Managers

Marine  
Corps: Camp  
Lejeune and  
New River

Onslow  
Chamber of  
Commerce

Health  
Services,  
Emergency  
Management

Jacksonville  
Transit &  
Onslow  
Public  
Transp.

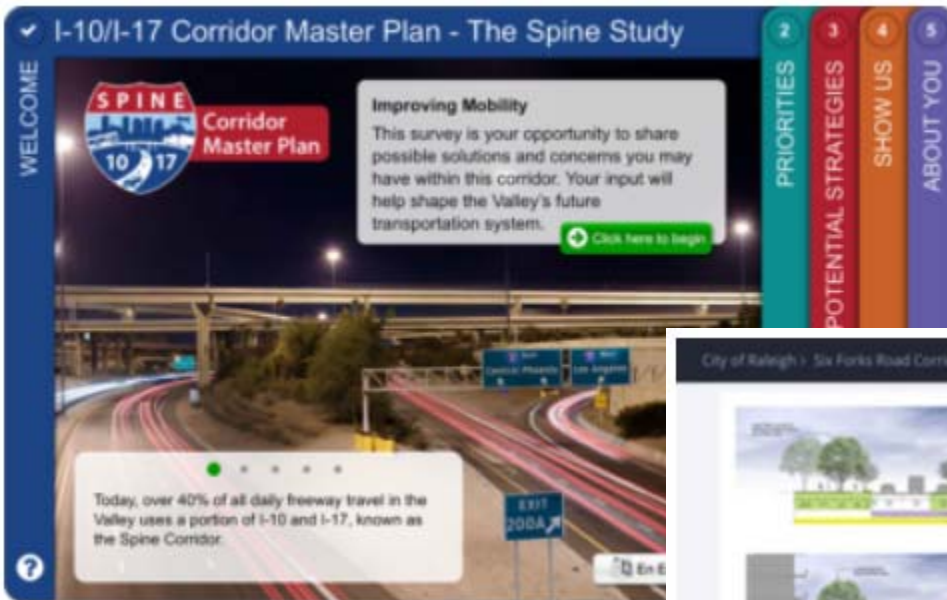
Albert J. Ellis  
Regional  
Airport

Coastal  
Carolina  
Community  
College &  
Onslow Co  
Schools

Walmart &  
other large  
businesses

Onslow  
Memorial  
Hospitals

# Public Engagement Via MPO/RPO and Stakeholders



MetroQuest

PublicInput.com



# Plan Deliverable:

## Unified Statewide Vision per Corridor

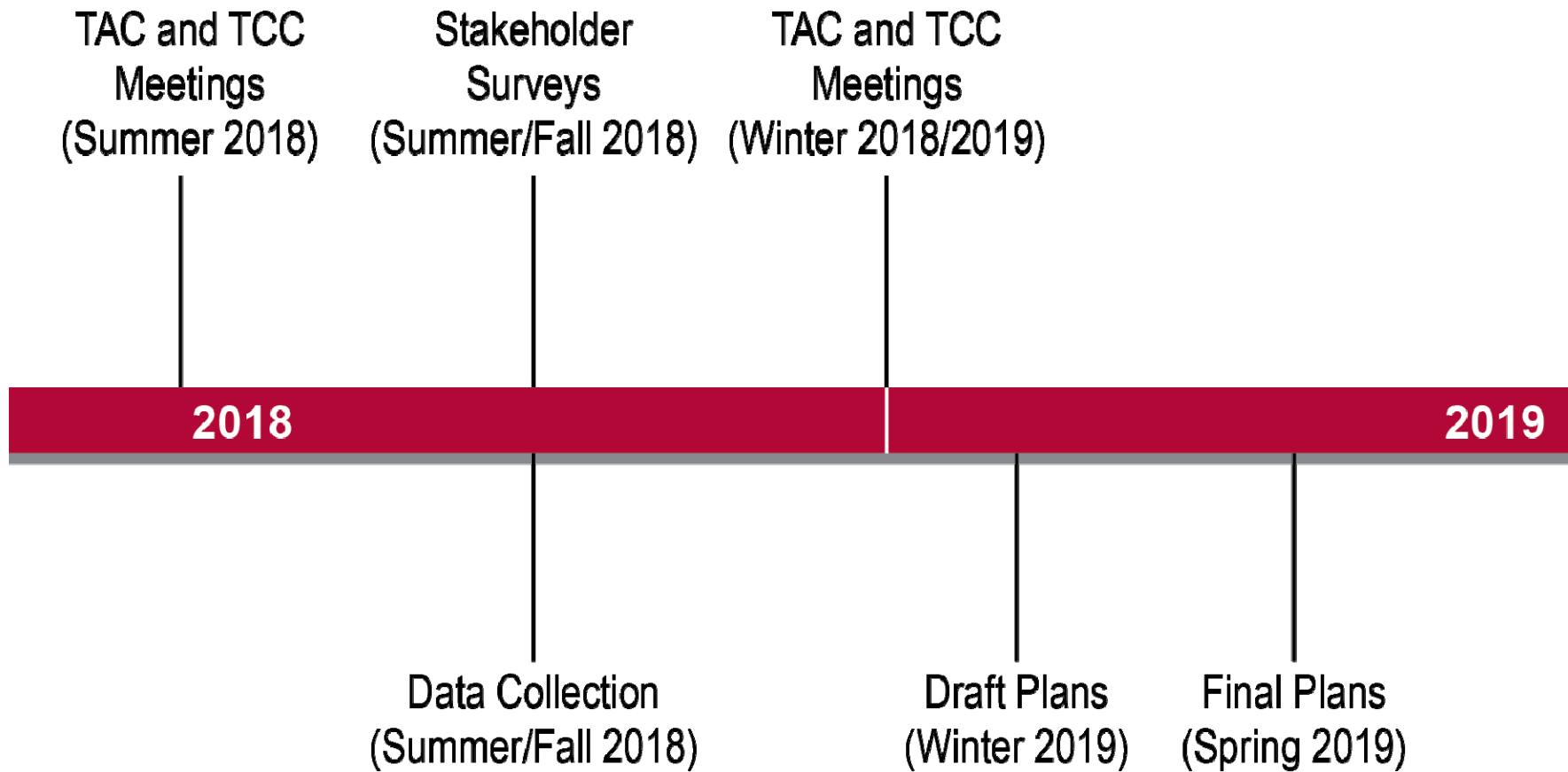
- Corridor Map
- Corridor Profile
- Problem Statement for Sub-Corridors
- Corridor Access Management Recommendations
- Strategic Corridor Conditions Report
- Developing Strategies and Identifying Recommendations Report



# Elements Potentially Included

- Facility type
- Multimodal accommodations
- Access management / UDO change
- Sub-corridors
  - Sequencing of potential projects
  - Purpose and need statements
  - Timeframe
- Interim strategies

# Master Plan Next Steps



Questions?