
Appendix F:

Corridor S

Future I-795

Electric Charging Stations

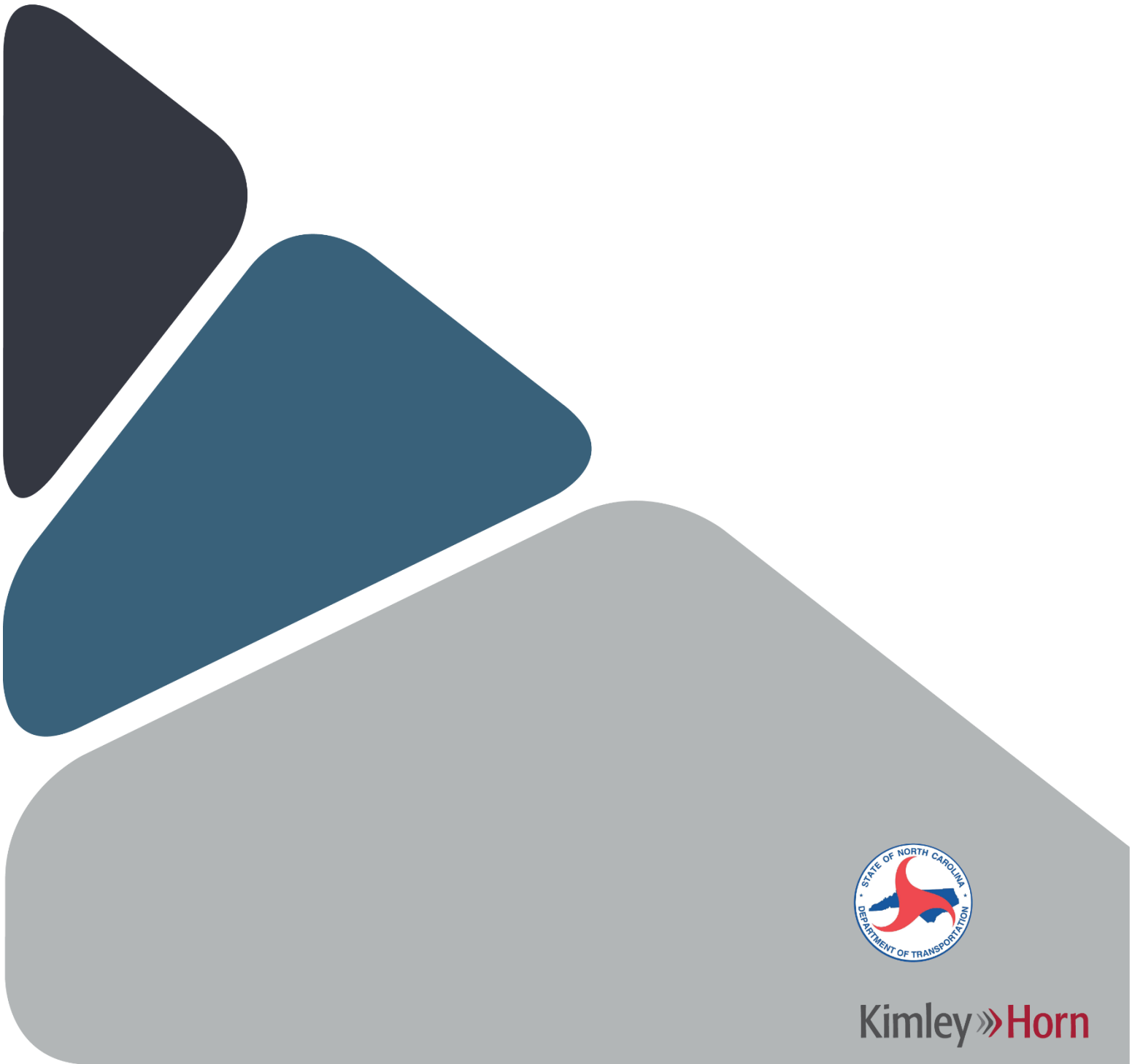
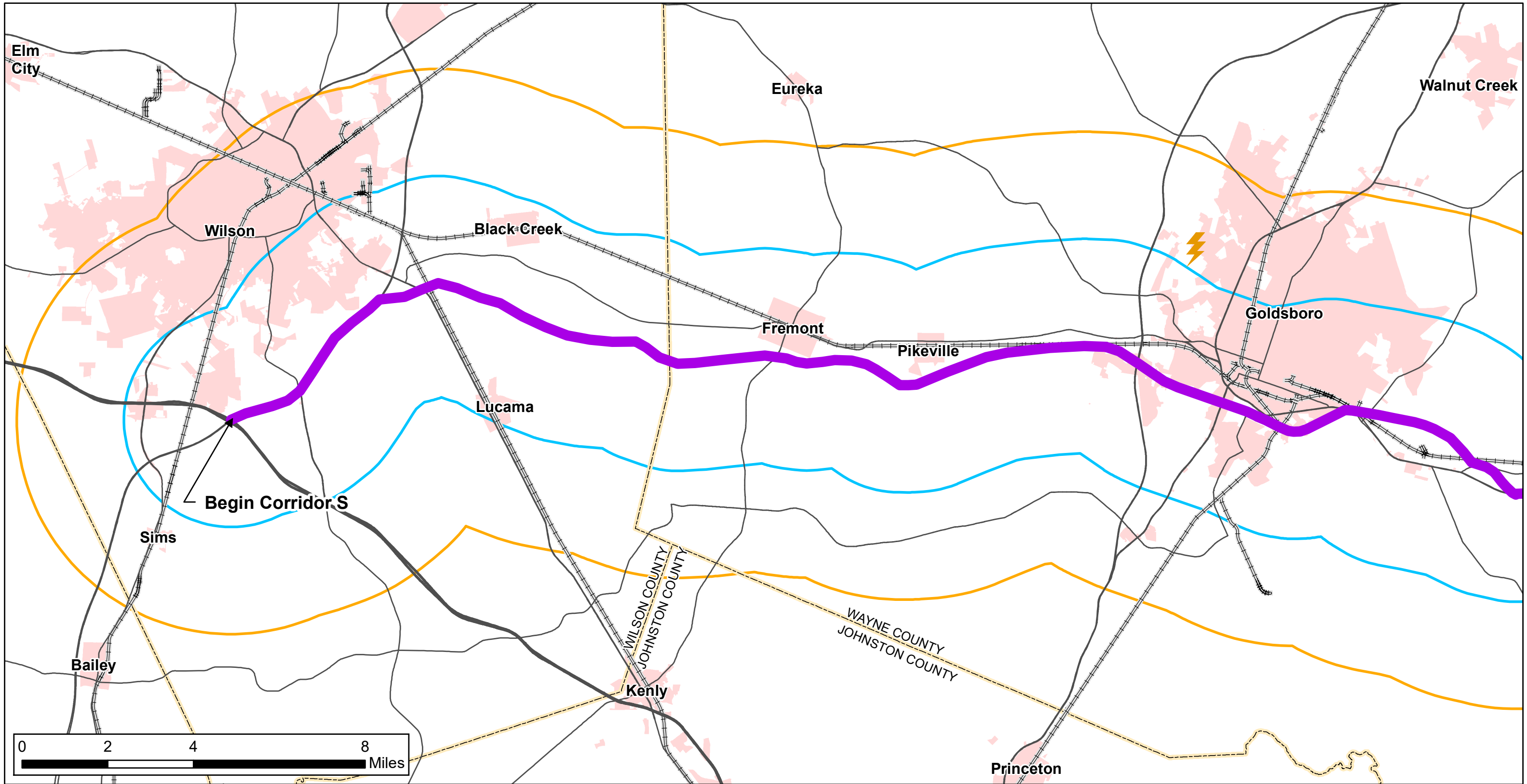


Table of Contents

Figures

Figures 4A-4B. Electric Charging Stations

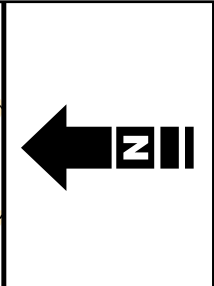
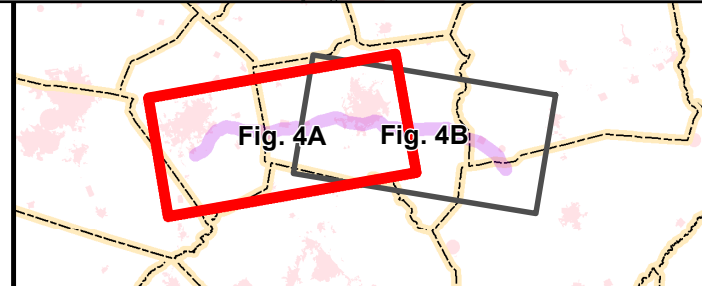


**NC STRATEGIC
TRANSPORTATION
CORRIDORS (STC)**

FEBRUARY 2022
Source: NCOneMap, NCDOT GIS, ESRI, Plug-In NC

Legend

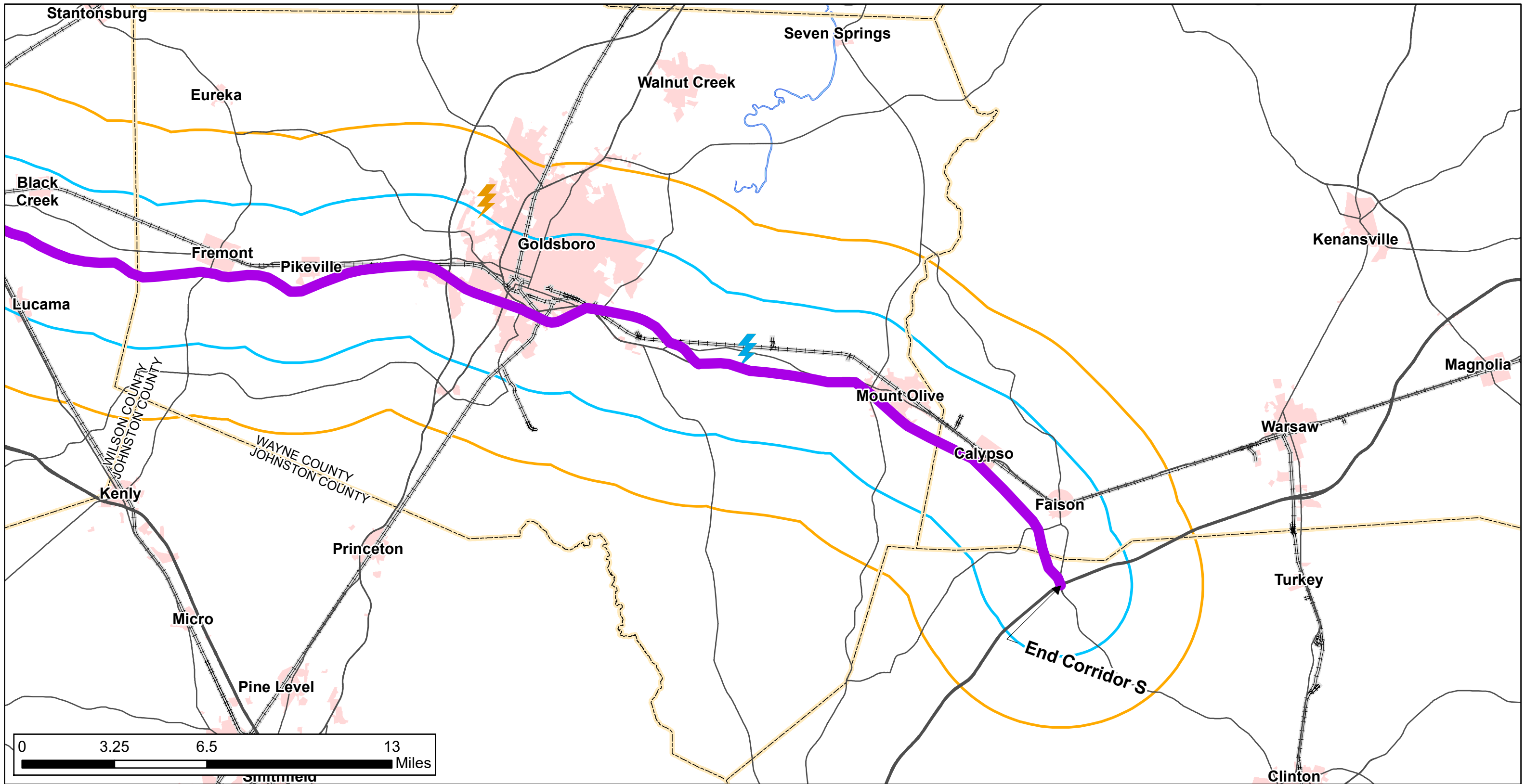
- STC Highway Corridor S
- Interstate
- U.S./N.C. Route
- Rail
- Municipal Boundary
- Counties
- Charging Stations Within 10 miles
- 5 Mile STC Buffer
- 10 Mile STC Buffer



**CORRIDOR S:
ELECTRIC CHARGING
STATIONS**

**FIGURE 4A:
I-95/I-795 TO GOLDSBORO**

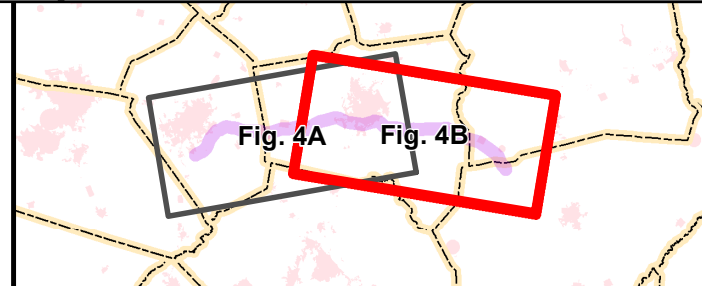
This map is accurate as of October 2021. For updated charging station locations and location addresses, please visit <https://pluginnc.com/find-a-charging-station/>



NC STRATEGIC TRANSPORTATION CORRIDORS (STC)

FEBRUARY 2022
 Source: NCOneMap, NCDOT GIS, ESRI, Plug-In NC

STC Highway Corridor S	Municipal Boundary	5 Mile STC Buffer
Interstate	Counties	10 Mile STC Buffer
U.S./N.C. Route	Charging Stations Within 5 miles	
Rail	Charging Stations Within 10 miles	
Major Water Bodies		



CORRIDOR S: ELECTRIC CHARGING STATIONS

FIGURE 4B: GOLDSBORO TO I-40

This map is accurate as of October 2021. For updated charging station locations and location addresses, please visit <https://pluginncc.com/find-a-charging-station/>