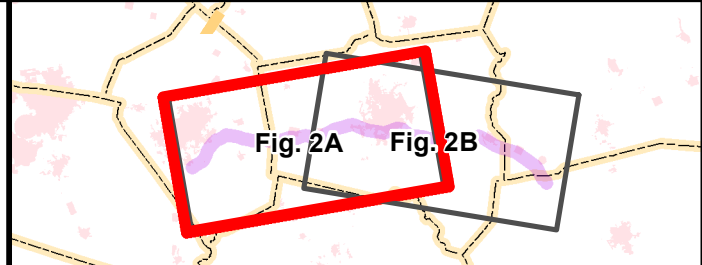


**NC STRATEGIC
TRANSPORTATION
CORRIDOR S (STC)**

JULY 2021
Source: NCOneMap, NCDOT GIS, ESRI

| Legend | |
|--------|--------------------------------|
| | STC Highway Corridor S |
| | Evacuation Route |
| | Interstate |
| | U.S./N.C. Route |
| | Rail |
| | Major Rivers/Streams |
| | Flood Incident* |
| | Road Inundation Incident** |
| | 100- Year Storm Event Incident |
| | Major Water Bodies |
| | 500-Year Floodplain |
| | 100-Year Floodplain |
| | Floodway |
| | Municipal Boundary |
| | Counties |



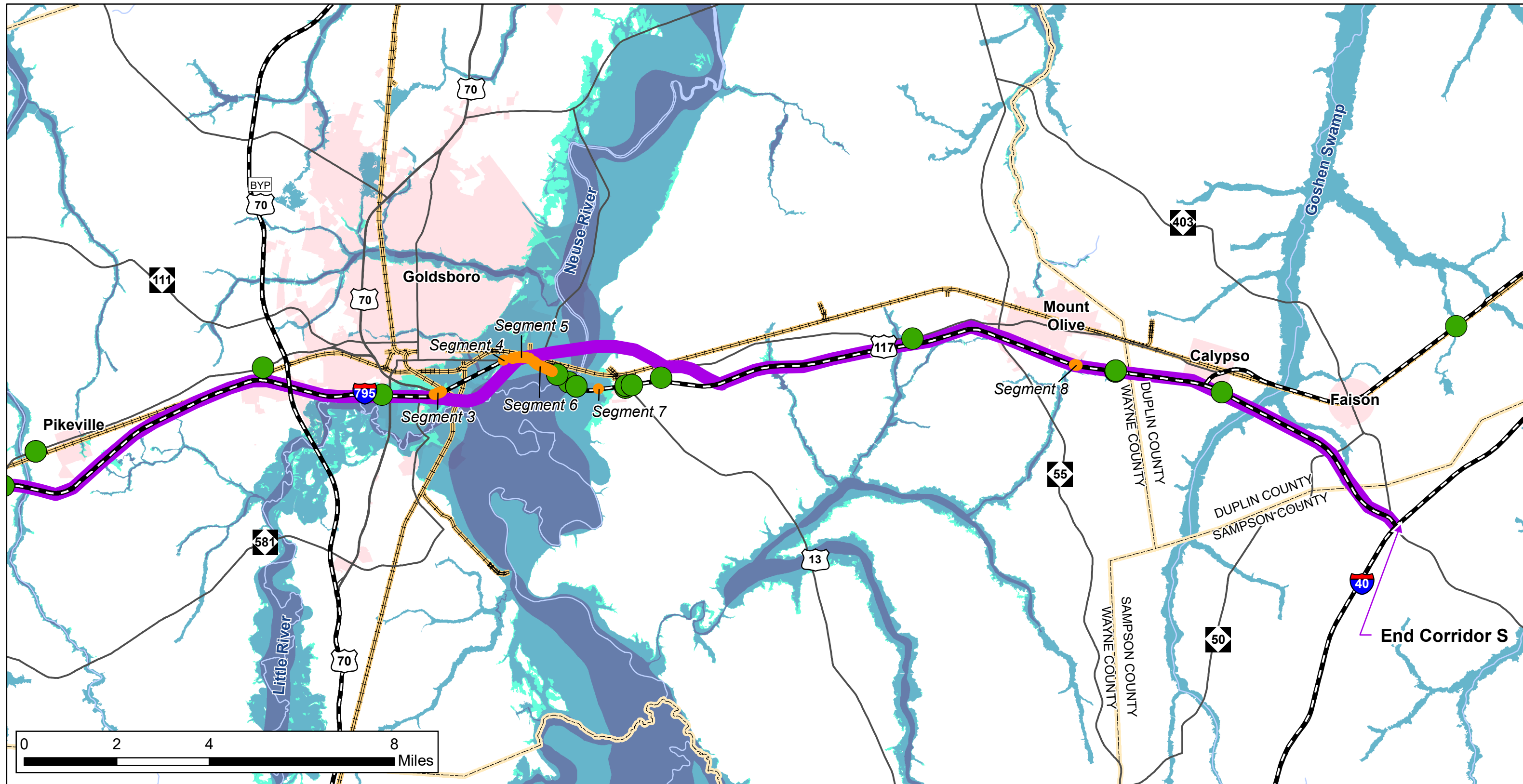
**CORRIDOR S:
RESILIENCY MAP**

FUTURE I-795

**FIGURE 2A:
I-95/I-795 TO GOLDSBORO**

*Flood Incidents represent historic flood events catalogued in the NCDOT Drive N.C. database from 2011-2019.

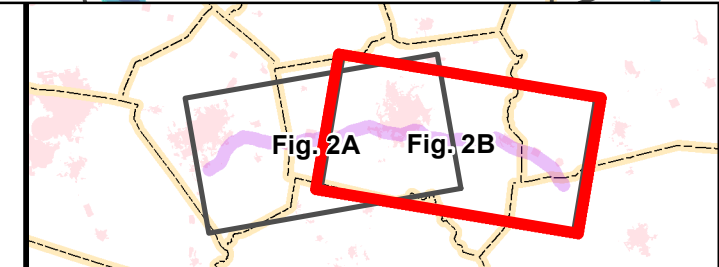
**Road Inundation Incidents are displayed at the 100-year recurrence interval. Segments are defined based on clusters of 100-year recurrence interval incidents. Road Inundation Incidents displayed on this map are those only within 10 miles of the Corridor.



**NC STRATEGIC
TRANSPORTATION
CORRIDOR S (STC)**

JULY 2021
Source: NCOneMap, NCDOT GIS, ESRI

| Legend | |
|--------|--------------------------------|
| | STC Highway Corridor S |
| | Evacuation Route |
| | Interstate |
| | U.S./N.C. Route |
| | Rail |
| | Major Rivers/Streams |
| | Flood Incident* |
| | Road Inundation Incident** |
| | 100- Year Storm Event Incident |
| | Major Water Bodies |
| | 500-Year Floodplain |
| | 100-Year Floodplain |
| | Floodway |
| | Municipal Boundary |
| | Counties |



**CORRIDOR S:
RESILIENCY MAP**

FUTURE I-795

**FIGURE 2B:
GOLDSBORO TO I-40**

*Flood Incidents represent historic flood events catalogued in the NCDOT Drive N.C. database from 2011-2019.
 **Road Inundation Incidents are displayed at the 100-year recurrence interval. Segments are defined based on clusters of 100-year recurrence interval incidents. Road Inundation Incidents displayed on this map are those only within 10 miles of the Corridor.