
Appendix H:

Corridor X

Jacksonville to Greenville

(U.S. 13/U.S. 264/N.C. 11/C.F. Harvey Pkwy/U.S. 258)

Population and Employment Growth
Regional Model





Table of Contents

Tables

Table H-1. Population and Employment Growth – Kinston Regional Model Traffic Analysis Zone	3
Table H-2. Population and Employment Growth – Jacksonville Regional Model Traffic Analysis Zone	7
Table H-3. Population and Employment Growth – Greenville Regional Model Traffic Analysis Zone	10

Figures

Figure 7. Population Growth – Regional Model Traffic Analysis Zone Map	16
Figure 8. Employment Growth – Regional Model Traffic Analysis Zone Map	16



Population and Employment Growth

This appendix presents base and future year population and employment growth for Corridor X of the North Carolina Strategic Transportation Corridors (STC). The following data is collected using the Kinston, Jacksonville, and Greenville Regional Traffic Model Traffic Analysis Zones (TAZ) and is organized numerically by TAZ Number. TAZs within a 2-mile buffer area on both sides of the corridor were used to capture population and employment totals.



Table H-1. Population and Employment Growth – Kinston Regional Model Traffic Analysis Zone

TAZ Number	Population in 2010	Population in 2040	Annual Population Growth (2010-2040)	Total Number of Employed Persons in 2010	Total Number of Employed Persons in 2040	Annual Employment Growth (2010-2040)
74	111	111	0.0%	9	11	0.7%
85	4	4	0.0%	2	2	0.0%
86	374	374	0.0%	30	32	0.2%
87	4	4	0.0%	4	5	0.7%
102	57	57	0.0%	108	129	0.6%
103	8	8	0.0%	830	942	0.4%
104	55	55	0.0%	7	9	0.8%
105	104	104	0.0%	787	833	0.2%
106	280	280	0.0%	340	369	0.3%
107	195	195	0.0%	412	529	0.8%
108	102	102	0.0%	128	144	0.4%
109	340	340	0.0%	38	53	1.1%
110	231	231	0.0%	55	75	1.0%
111	1554	1554	0.0%	3514	3791	0.3%
112	61	61	0.0%	64	75	0.5%
113	282	282	0.0%	5	5	0.0%
114	705	705	0.0%	25	25	0.0%
115	1808	1808	0.0%	81	94	0.5%
116	87	87	0.0%	90	106	0.5%
117	5	5	0.0%	9	9	0.0%
118	485	485	0.0%	11	12	0.3%
119	215	215	0.0%	10	11	0.3%
120	150	150	0.0%	27	29	0.2%
121	264	264	0.0%	249	290	0.5%
122	217	217	0.0%	276	458	1.7%
123	1251	1251	0.0%	45	104	2.8%
124	0	0	0.0%	84	104	0.7%
125	52	52	0.0%	1	151	18.2%
127	95	95	0.0%	1	1	0.0%
130	131	131	0.0%	5	27	5.8%
131	54	54	0.0%	5	19	4.6%
132	27	27	0.0%	335	606	2.0%
133	378	378	0.0%	13	615	13.7%
134	18	18	0.0%	1086	1410	0.9%

(Continued on next page)



Table H-1. Population and Employment Growth – Kinston Regional Model Traffic Analysis Zone
(Continued)

TAZ Number	Population in 2010	Population in 2040	Annual Population Growth (2010-2040)	Total Number of Employed Persons in 2010	Total Number of Employed Persons in 2040	Annual Employment Growth (2010-2040)
135	146	146	0.0%	43	312	6.8%
136	0	0	0.0%	30	86	3.6%
137	1072	1072	0.0%	630	750	0.6%
138	399	399	0.0%	16	16	0.0%
139	191	191	0.0%	172	182	0.2%
144	596	596	0.0%	249	260	0.1%
148	351	351	0.0%	281	293	0.1%
161	482	482	0.0%	320	340	0.2%
162	306	306	0.0%	155	158	0.1%
171	2	2	0.0%	373	438	0.5%
172	269	269	0.0%	509	615	0.6%
173	30	30	0.0%	55	57	0.1%
189	18	18	0.0%	305	322	0.2%
193	120	120	0.0%	9	10	0.4%
194	963	963	0.0%	602	636	0.2%
195	72	72	0.0%	219	240	0.3%
205	364	364	0.0%	32	34	0.2%
207	90	90	0.0%	0	0	0.0%
210	48	48	0.0%	132	42	-3.7%
211	33	33	0.0%	14	252	10.1%
212	111	111	0.0%	1	15	9.4%
213	53	53	0.0%	56	0	-100.0%
214	20	20	0.0%	1	67	15.0%
215	0	0	0.0%	12	0	-100.0%
216	325	325	0.0%	3	13	5.0%
217	66	66	0.0%	34	4	-6.9%
218	22	22	0.0%	71	53	-1.0%
219	30	30	0.0%	7	83	8.6%
220	49	49	0.0%	0	0	0.0%
221	66	66	0.0%	97	12	-6.7%
222	210	210	0.0%	2	97	13.8%
223	9	9	0.0%	37	2	-9.3%
224	30	30	0.0%	1	39	13.0%
225	63	63	0.0%	2	0	-100.0%

(Continued on next page)



Table H-1. Population and Employment Growth – Kinston Regional Model Traffic Analysis Zone
(Continued)

TAZ Number	Population in 2010	Population in 2040	Annual Population Growth (2010-2040)	Total Number of Employed Persons in 2010	Total Number of Employed Persons in 2040	Annual Employment Growth (2010-2040)
226	0	0	0.0%	4	2	-2.3%
228	3	3	0.0%	30	0	-100.0%
229	10	10	0.0%	1	40	13.1%
237	129	129	0.0%	1	4	4.7%
238	11	11	0.0%	10	0	-100.0%
239	76	76	0.0%	3	11	4.4%
240	114	114	0.0%	1	4	4.7%
241	283	283	0.0%	3	0	-100.0%
246	68	68	0.0%	1	2	2.3%
247	85	85	0.0%	0	0	0.0%
252	147	147	0.0%	27	0	-100.0%
287	245	245	0.0%	8	9	0.4%
288	140	140	0.0%	1	9	7.6%
292	425	425	0.0%	21	636	12.0%
293	80	80	0.0%	40	21	-2.1%
296	209	209	0.0%	23	98	5.0%
297	62	62	0.0%	7	23	4.0%
298	3	3	0.0%	2	7	4.3%
299	0	0	0.0%	64	2	-10.9%
300	48	48	0.0%	45	70	1.5%
301	34	34	0.0%	0	0	0.0%
302	650	650	0.0%	5	5	0.0%
303	68	68	0.0%	206	237	0.5%
304	175	175	0.0%	213	231	0.3%
305	119	119	0.0%	249	261	0.2%
306	22	22	0.0%	39	39	0.0%
307	1028	1028	0.0%	6	6	0.0%
308	174	174	0.0%	25	31	0.7%
309	274	274	0.0%	0	0	0.0%
310	52	52	0.0%	42	45	0.2%
313	136	136	0.0%	1	1	0.0%
314	209	209	0.0%	4	5	0.7%
315	183	183	0.0%	54	56	0.1%
317	357	357	0.0%	0	0	0.0%
321	114	114	0.0%	5	5	0.0%

(Continued on next page)



Table H-1. Population and Employment Growth – Kinston Regional Model Traffic Analysis Zone
(Continued)

TAZ Number	Population in 2010	Population in 2040	Annual Population Growth (2010-2040)	Total Number of Employed Persons in 2010	Total Number of Employed Persons in 2040	Annual Employment Growth (2010-2040)
325	750	750	0.0%	0	0	0.0%
331	0	0	0.0%	0	0	0.0%
332	56	56	0.0%	0	0	0.0%
333	67	67	0.0%	0	0	0.0%
334	98	98	0.0%	0	0	0.0%
335	185	185	0.0%	0	0	0.0%
336	0	0	0.0%	0	0	0.0%
337	0	0	0.0%	0	0	0.0%
338	67	67	0.0%	0	0	0.0%
339	13	13	0.0%	0	0	0.0%
340	0	0	0.0%	0	0	0.0%
341	203	203	0.0%	10	7	-1.2%
342	134	134	0.0%	0	0	0.0%
343	0	0	0.0%	0	0	0.0%
344	471	471	0.0%	0	0	0.0%
345	0	0	0.0%	0	0	0.0%
346	0	0	0.0%	0	0	0.0%
347	50	50	0.0%	86	96	0.4%
348	30	30	0.0%	0	0	0.0%
349	11	11	0.0%	0	0	0.0%



Table H-2. Population and Employment Growth – Jacksonville Regional Model Traffic Analysis Zone

TAZ Number	Population in 2010	Population in 2040	Annual Population Growth (2010-2040)	Total Number of Employed Persons in 2010	Total Number of Employed Persons in 2040	Annual Employment Growth (2010-2040)
39	215	356	1.7%	10	17	1.8%
40	621	1029	1.7%	45	79	1.9%
41	347	575	1.7%	10	17	1.8%
42	295	489	1.7%	13	23	1.9%
43	359	595	1.7%	16	28	1.9%
44	70	116	1.7%	4	7	1.9%
45	27	44	1.6%	32	56	1.9%
48	636	1986	3.9%	4	7	1.9%
49	72	224	3.9%	21	37	1.9%
50	536	1674	3.9%	6	10	1.7%
53	209	652	3.9%	0	0	0.0%
54	200	624	3.9%	31	54	1.9%
55	266	784	3.7%	28	49	1.9%
56	93	154	1.7%	8	14	1.9%
57	77	127	1.7%	46	81	1.9%
58	314	520	1.7%	75	132	1.9%
59	164	271	1.7%	228	403	1.9%
60	299	535	2.0%	52	92	1.9%
61	28	46	1.7%	12	21	1.9%
62	171	283	1.7%	208	368	1.9%
63	203	336	1.7%	4	7	1.9%
64	22	36	1.7%	311	550	1.9%
65	367	608	1.7%	1	1	0.0%
66	104	172	1.7%	23	40	1.9%
67	128	212	1.7%	2	3	1.4%
68	254	421	1.7%	9	15	1.7%
76	185	306	1.7%	2	3	1.4%
77	64	106	1.7%	1	1	0.0%
79	1125	3514	3.9%	57	100	1.9%
80	1164	1930	1.7%	157	277	1.9%
81	978	1621	1.7%	14	24	1.8%
82	690	1144	1.7%	192	339	1.9%
83	296	490	1.7%	140	247	1.9%
84	1136	1883	1.7%	62	109	1.9%
85	655	1086	1.7%	308	545	1.9%

(Continued on next page)



Table H-2. Population and Employment Growth – Jacksonville Regional Model Traffic Analysis Zone
(Continued)

TAZ Number	Population in 2010	Population in 2040	Annual Population Growth (2010-2040)	Total Number of Employed Persons in 2010	Total Number of Employed Persons in 2040	Annual Employment Growth (2010-2040)
86	293	485	1.7%	66	116	1.9%
87	3438	5700	1.7%	122	215	1.9%
103	845	1401	1.7%	11	19	1.8%
158	944	1565	1.7%	6	10	1.7%
159	52	86	1.7%	101	178	1.9%
160	310	514	1.7%	594	1051	1.9%
161	838	1389	1.7%	10	17	1.8%
162	500	829	1.7%	27	47	1.9%
163	823	1364	1.7%	15	26	1.9%
164	1118	1853	1.7%	115	203	1.9%
165	235	389	1.7%	851	1506	1.9%
166	565	936	1.7%	806	1426	1.9%
167	191	191	0.0%	3	5	1.7%
168	11	11	0.0%	251	444	1.9%
169	312	312	0.0%	26	46	1.9%
170	1389	2303	1.7%	337	596	1.9%
171	1143	1895	1.7%	95	168	1.9%
172	687	1139	1.7%	107	189	1.9%
179	1458	2417	1.7%	89	157	1.9%
186	2703	2703	0.0%	2801	4958	1.9%
187	5188	7415	1.2%	507	897	1.9%
188	1190	1973	1.7%	616	1090	1.9%
189	1200	1989	1.7%	21	37	1.9%
190	1895	2316	0.7%	997	1765	1.9%
191	679	1125	1.7%	551	975	1.9%
192	86	142	1.7%	43	76	1.9%
193	2	3	1.4%	53	93	1.9%
194	17	28	1.7%	142	251	1.9%
195	304	504	1.7%	138	244	1.9%
196	16	26	1.6%	94	166	1.9%
197	1	1	0.0%	125	221	1.9%
198	0	0	0.0%	608	1076	1.9%
199	0	0	0.0%	144	254	1.9%
200	8	13	1.6%	74	131	1.9%
201	3	4	1.0%	35	61	1.9%

(Continued on next page)



Table H-2. Population and Employment Growth – Jacksonville Regional Model Traffic Analysis Zone (Continued)

TAZ Number	Population in 2010	Population in 2040	Annual Population Growth (2010-2040)	Total Number of Employed Persons in 2010	Total Number of Employed Persons in 2040	Annual Employment Growth (2010-2040)
202	120	198	1.7%	551	975	1.9%
203	590	978	1.7%	331	585	1.9%
204	143	237	1.7%	182	322	1.9%
205	353	585	1.7%	219	387	1.9%
206	1433	2376	1.7%	1836	3250	1.9%
214	0	0	0.0%	1131	2002	1.9%
216	1505	2495	1.7%	151	267	1.9%
218	2284	2284	0.0%	66	116	1.9%
219	2435	2435	0.0%	526	931	1.9%
220	1670	1670	0.0%	976	1727	1.9%
221	0	0	0.0%	105	185	1.9%
239	774	774	0.0%	349	617	1.9%
240	739	739	0.0%	357	632	1.9%
241	306	306	0.0%	106	187	1.9%
242	151	151	0.0%	294	520	1.9%
243	551	913	1.7%	542	959	1.9%
244	1	1	0.0%	91	161	1.9%
245	592	981	1.7%	20	35	1.9%
246	71	71	0.0%	650	1150	1.9%
247	219	219	0.0%	44	77	1.9%
248	104	104	0.0%	35	61	1.9%
249	343	343	0.0%	2423	4289	1.9%
250	273	273	0.0%	5	8	1.6%
251	15	15	0.0%	383	678	1.9%
252	1	1	0.0%	1308	2315	1.9%
253	61	61	0.0%	855	1513	1.9%
254	0	0	0.0%	427	755	1.9%
501	4742	5508	0.5%	257	454	1.9%



Table H-3. Population and Employment Growth – Greenville Regional Model Traffic Analysis Zone

TAZ Number	Population in 2016	Population in 2045	Annual Population Growth (2016-2045)	Total Number of Employed Persons in 2016	Total Number of Employed Persons in 2045	Annual Employment Growth (2016-2045)
72	1017	1100	0.3%	65	70	0.3%
73	21	23	0.3%	215	233	0.3%
74	0	0	0.0%	8430	9126	0.3%
76	0	0	0.0%	381	413	0.3%
78	0	0	0.0%	1104	1196	0.3%
79	619	670	0.3%	393	426	0.3%
80	1074	1162	0.3%	69	75	0.3%
81	140	151	0.3%	449	486	0.3%
82	1075	1163	0.3%	45	48	0.2%
84	107	116	0.3%	195	210	0.3%
85	3523	3811	0.3%	273	295	0.3%
87	862	933	0.3%	264	286	0.3%
88	1170	1266	0.3%	40	43	0.2%
89	141	153	0.3%	56	61	0.3%
90	3146	3403	0.3%	669	726	0.3%
92	1488	1610	0.3%	499	540	0.3%
115	30	32	0.2%	150	163	0.3%
116	120	130	0.3%	5	5	0.0%
117	22	24	0.3%	190	206	0.3%
118	132	143	0.3%	206	224	0.3%
119	28	30	0.2%	15	16	0.2%
121	0	0	0.0%	442	478	0.3%
122	0	0	0.0%	673	731	0.3%
123	28	30	0.2%	1244	1347	0.3%
124	70	76	0.3%	214	233	0.3%
128	201	217	0.3%	59	64	0.3%
130	0	0	0.0%	0	0	0.0%
131	0	0	0.0%	207	225	0.3%
132	923	999	0.3%	50	53	0.2%
159	50	54	0.3%	32	35	0.3%
160	5	5	0.0%	679	736	0.3%
161	15	16	0.2%	1344	1456	0.3%
168	0	0	0.0%	2397	2597	0.3%
196	1104	1194	0.3%	1522	1649	0.3%
197	362	392	0.3%	85	92	0.3%
198	1841	1992	0.3%	93	100	0.3%

(Continued on next page)



Table H-3. Population and Employment Growth – Greenville Regional Model Traffic Analysis Zone
(Continued)

TAZ Number	Population in 2016	Population in 2045	Annual Population Growth (2016-2045)	Total Number of Employed Persons in 2016	Total Number of Employed Persons in 2045	Annual Employment Growth (2016-2045)
200	1781	1927	0.3%	600	651	0.3%
215	1288	1393	0.3%	239	258	0.3%
217	990	1071	0.3%	44	48	0.3%
222	55	60	0.3%	1	1	0.0%
224	119	129	0.3%	1	1	0.0%
263	42	45	0.2%	3	3	0.0%
264	428	463	0.3%	10	10	0.0%
265	20	22	0.3%	0	0	0.0%
266	374	405	0.3%	5	5	0.0%
267	53	57	0.3%	10	10	0.0%
268	266	288	0.3%	41	44	0.2%
269	271	293	0.3%	17	18	0.2%
270	98	106	0.3%	13	14	0.3%
271	80	87	0.3%	15	16	0.2%
272	158	171	0.3%	20	21	0.2%
273	88	95	0.3%	6	6	0.0%
315	368	398	0.3%	5	5	0.0%
316	427	462	0.3%	286	310	0.3%
318	281	304	0.3%	76	82	0.3%
320	189	204	0.3%	137	148	0.3%
322	6	6	0.0%	6	6	0.0%
323	593	642	0.3%	41	44	0.2%
324	32	35	0.3%	0	0	0.0%
325	87	94	0.3%	48	51	0.2%
335	10	11	0.3%	0	0	0.0%
336	116	125	0.3%	277	302	0.3%
341	850	920	0.3%	43	46	0.2%
342	698	755	0.3%	35	38	0.3%
343	302	327	0.3%	316	342	0.3%
344	131	142	0.3%	3	3	0.0%
345	22	24	0.3%	3	3	0.0%
346	16	17	0.2%	15	16	0.2%
347	224	242	0.3%	15	15	0.0%
348	520	563	0.3%	30	32	0.2%
349	188	203	0.3%	57	61	0.2%

(Continued on next page)



Table H-3. Population and Employment Growth – Greenville Regional Model Traffic Analysis Zone
(Continued)

TAZ Number	Population in 2016	Population in 2045	Annual Population Growth (2016-2045)	Total Number of Employed Persons in 2016	Total Number of Employed Persons in 2045	Annual Employment Growth (2016-2045)
350	107	116	0.3%	58	63	0.3%
351	77	83	0.3%	4	4	0.0%
353	273	295	0.3%	10	10	0.0%
355	8	9	0.4%	0	0	0.0%
356	50	54	0.3%	8	8	0.0%
357	480	519	0.3%	42	46	0.3%
358	98	106	0.3%	10	11	0.3%
359	804	870	0.3%	15	16	0.2%
363	471	510	0.3%	79	85	0.3%
364	96	104	0.3%	37	39	0.2%
365	540	584	0.3%	299	325	0.3%
366	418	452	0.3%	114	124	0.3%
367	51	55	0.3%	2	2	0.0%
368	0	0	0.0%	62	67	0.3%
370	469	507	0.3%	207	224	0.3%
371	147	159	0.3%	37	40	0.3%
372	19	21	0.3%	9	9	0.0%
373	3	3	0.0%	0	0	0.0%
374	507	548	0.3%	48	51	0.2%
376	1166	1261	0.3%	92	99	0.3%
377	1062	1149	0.3%	37	41	0.4%
381	1219	1319	0.3%	43	46	0.2%
383	61	66	0.3%	10	10	0.0%
390	120	130	0.3%	18	20	0.4%
391	289	313	0.3%	32	35	0.3%
401	62	67	0.3%	8	9	0.4%
407	16	17	0.2%	0	0	0.0%
408	62	67	0.3%	19	20	0.2%
409	30	32	0.2%	0	0	0.0%
410	39	42	0.3%	3	3	0.0%
411	10	11	0.3%	0	0	0.0%
413	74	80	0.3%	26	28	0.3%
414	61	66	0.3%	15	16	0.2%
417	6	6	0.0%	0	0	0.0%
418	103	111	0.3%	10	11	0.3%

(Continued on next page)



Table H-3. Population and Employment Growth – Greenville Regional Model Traffic Analysis Zone
(Continued)

TAZ Number	Population in 2016	Population in 2045	Annual Population Growth (2016-2045)	Total Number of Employed Persons in 2016	Total Number of Employed Persons in 2045	Annual Employment Growth (2016-2045)
419	24	26	0.3%	0	0	0.0%
420	138	149	0.3%	12	13	0.3%
472	23	25	0.3%	4	4	0.0%
473	553	598	0.3%	265	285	0.3%
474	197	213	0.3%	272	294	0.3%
475	197	213	0.3%	250	272	0.3%
476	50	54	0.3%	5	5	0.0%
477	67	72	0.2%	5	5	0.0%
478	429	464	0.3%	369	399	0.3%
479	0	0	0.0%	250	271	0.3%
480	229	248	0.3%	222	240	0.3%
481	826	894	0.3%	253	274	0.3%
482	279	302	0.3%	53	56	0.2%
483	61	66	0.3%	3	3	0.0%
484	58	63	0.3%	0	0	0.0%
485	678	733	0.3%	121	131	0.3%
486	110	119	0.3%	125	135	0.3%
487	85	92	0.3%	451	489	0.3%
488	94	102	0.3%	51	54	0.2%
489	206	223	0.3%	19	20	0.2%
490	182	197	0.3%	8	8	0.0%
491	41	44	0.2%	4	4	0.0%
494	325	352	0.3%	35	38	0.3%
495	78	84	0.3%	11	12	0.3%
496	29	31	0.2%	17	18	0.2%
497	26	28	0.3%	0	0	0.0%
498	19	21	0.3%	4	4	0.0%
499	143	155	0.3%	12	13	0.3%
501	390	422	0.3%	10	10	0.0%
503	235	254	0.3%	57	62	0.3%
504	91	98	0.3%	10	11	0.3%
505	91	98	0.3%	17	18	0.2%
506	293	317	0.3%	27	29	0.2%
509	273	295	0.3%	105	114	0.3%
510	183	198	0.3%	48	52	0.3%

(Continued on next page)



Table H-3. Population and Employment Growth – Greenville Regional Model Traffic Analysis Zone
(Continued)

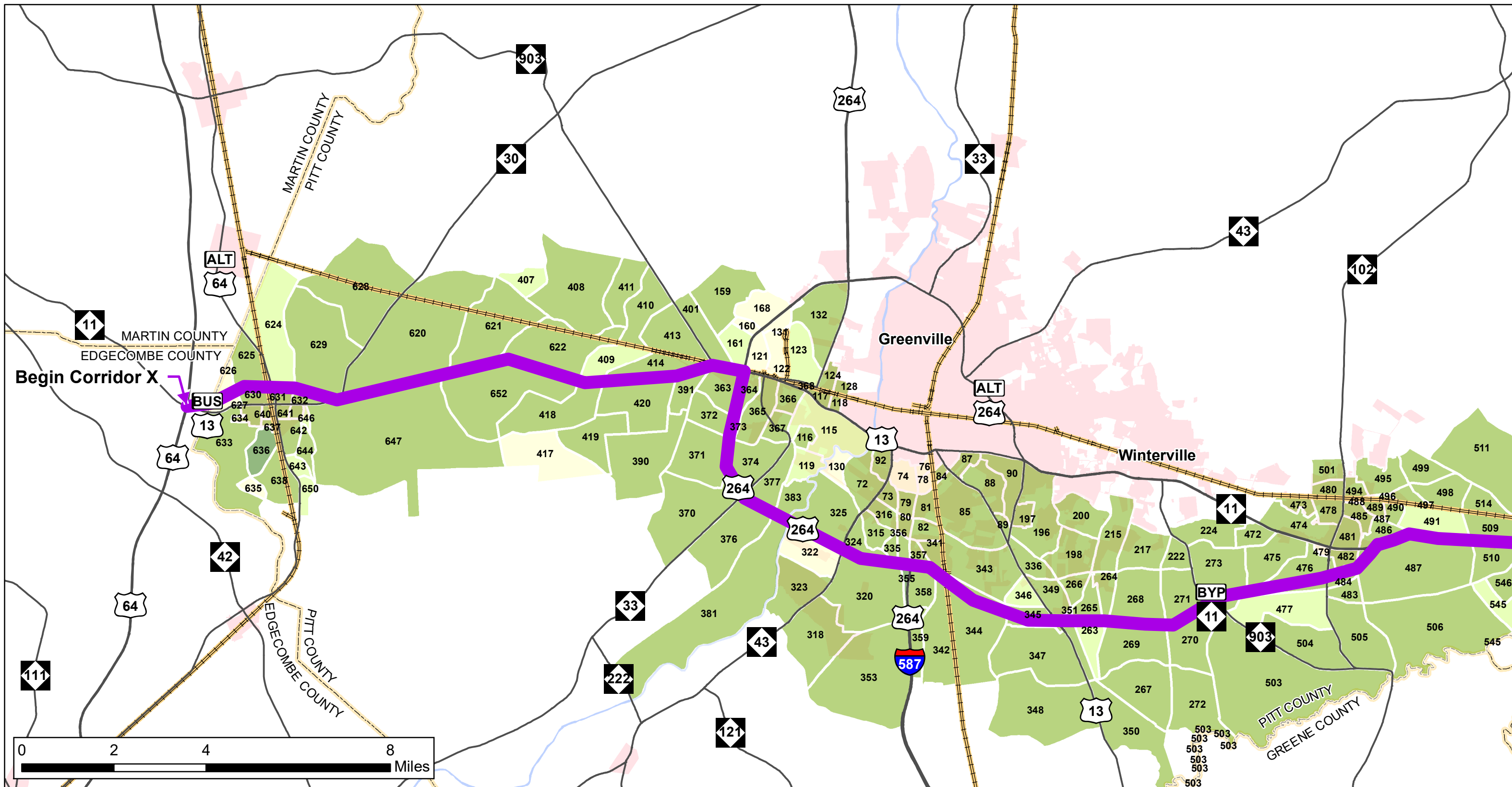
TAZ Number	Population in 2016	Population in 2045	Annual Population Growth (2016-2045)	Total Number of Employed Persons in 2016	Total Number of Employed Persons in 2045	Annual Employment Growth (2016-2045)
511	297	321	0.3%	262	283	0.3%
514	34	37	0.3%	0	0	0.0%
515	187	202	0.3%	11	12	0.3%
516	321	347	0.3%	5	5	0.0%
517	341	369	0.3%	25	27	0.3%
518	13	14	0.3%	3	3	0.0%
519	44	48	0.3%	3	3	0.0%
520	224	242	0.3%	16	17	0.2%
521	144	156	0.3%	3	3	0.0%
522	114	123	0.3%	0	0	0.0%
523	86	93	0.3%	200	216	0.3%
524	229	248	0.3%	10	11	0.3%
525	277	300	0.3%	8	8	0.0%
526	25	27	0.3%	63	68	0.3%
527	26	28	0.3%	17	18	0.2%
536	88	95	0.3%	10	11	0.3%
537	118	128	0.3%	42	46	0.3%
538	179	194	0.3%	15	15	0.0%
539	124	134	0.3%	31	33	0.2%
540	49	53	0.3%	10	10	0.0%
541	50	54	0.3%	0	0	0.0%
545	54	58	0.2%	17	19	0.4%
546	32	35	0.3%	0	0	0.0%
620	57	62	0.3%	15	17	0.4%
621	65	70	0.3%	132	142	0.3%
622	108	117	0.3%	6	6	0.0%
624	18	19	0.2%	9	10	0.4%
625	33	36	0.3%	5	5	0.0%
626	0	0	0.0%	0	0	0.0%
627	3	3	0.0%	4	4	0.0%
628	71	77	0.3%	13	13	0.0%
629	86	93	0.3%	15	16	0.2%
630	68	74	0.3%	5	5	0.0%
631	240	260	0.3%	50	54	0.3%
632	131	142	0.3%	55	60	0.3%

(Continued on next page)



Table H-3. Population and Employment Growth – Greenville Regional Model Traffic Analysis Zone
(Continued)

TAZ Number	Population in 2016	Population in 2045	Annual Population Growth (2016-2045)	Total Number of Employed Persons in 2016	Total Number of Employed Persons in 2045	Annual Employment Growth (2016-2045)
633	38	41	0.3%	2	2	0.0%
634	339	367	0.3%	0	0	0.0%
635	6	6	0.0%	0	0	0.0%
636	9	10	0.4%	0	0	0.0%
637	120	130	0.3%	0	0	0.0%
638	31	34	0.3%	0	0	0.0%
640	142	154	0.3%	67	72	0.2%
641	275	298	0.3%	6	6	0.0%
642	163	176	0.3%	7	7	0.0%
643	41	44	0.2%	0	0	0.0%
644	33	36	0.3%	0	0	0.0%
645	133	144	0.3%	20	21	0.2%
646	14	15	0.2%	0	0	0.0%
647	21	23	0.3%	0	0	0.0%
650	27	29	0.2%	5	5	0.0%
652	43	47	0.3%	149	162	0.3%



NC STRATEGIC TRANSPORTATION CORRIDOR X (STC)

FEBRUARY 2022

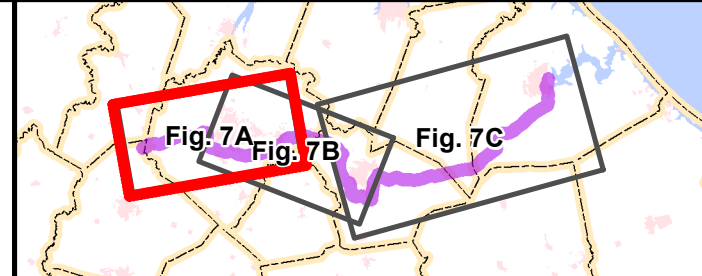
Source: NCOneMap, NCDOT GIS, ESRI

Legend

- STC Highway Corridor X
- Interstate
- U.S./N.C. Route
- Rail
- Major Water Bodies
- Municipal Boundary
- Counties

Greenville Regional Model Annual Population Growth

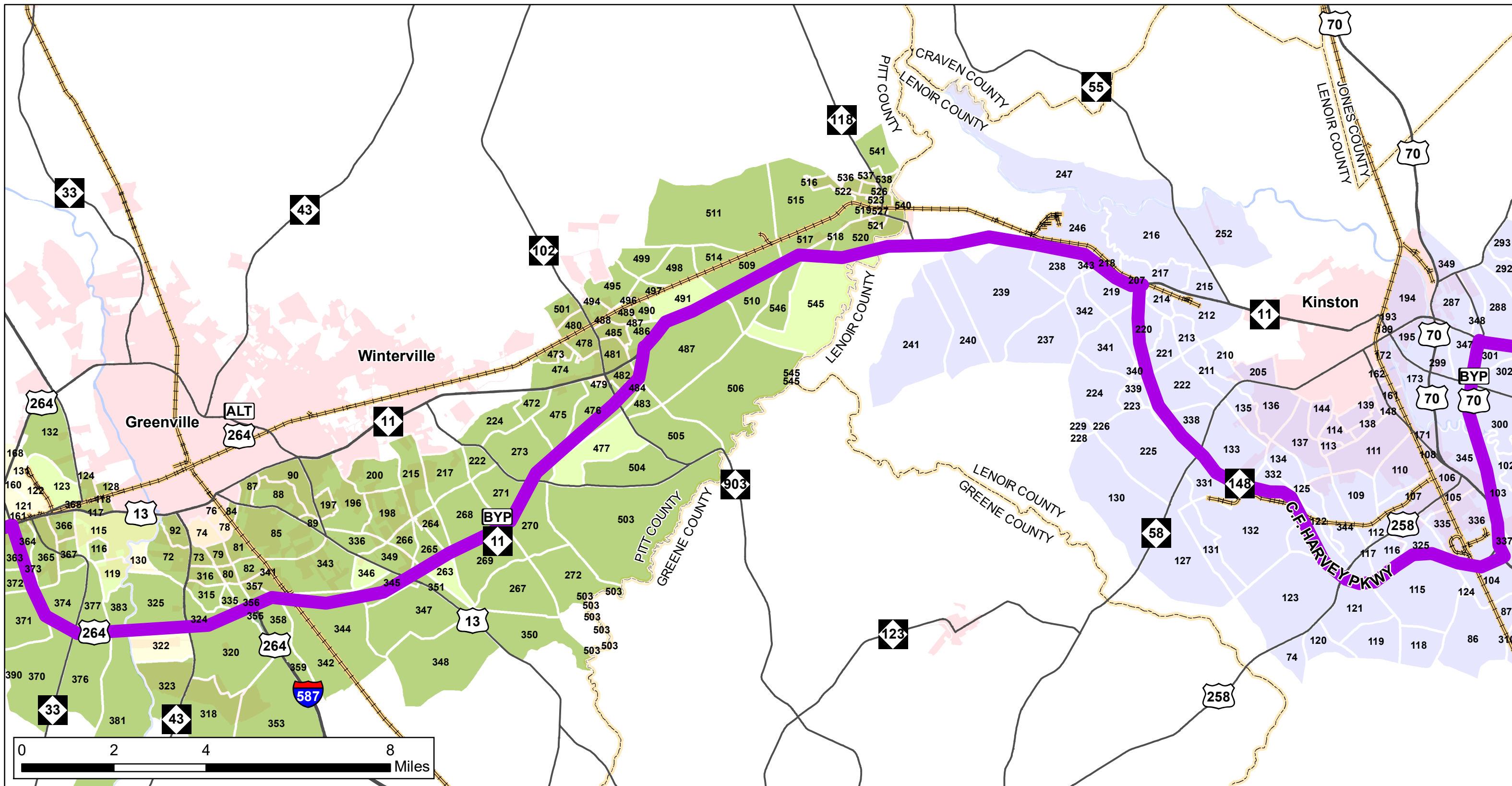
- 0.0% - 0.1%
- 0.1% - 0.2%
- 0.2% - 0.3%
- 0.3% - 0.4%



CORRIDOR X: POPULATION GROWTH - REGIONAL MODEL TRAFFIC ANALYSIS ZONES (TAZ)

FIGURE 7A: U.S. 13 TO GREENVILLE

No regional models were available in other segments of the corridor. TAZ Number on the map correlates to TAZ Number in Appendix G of the Mobility Analysis Report. Additional population and employment data can be found in the data tables. *TAZ Number is the 1-4 digit solid, bold number in map. Kinston, and Jacksonville Annual Growth is 2010-2040, the Greenville Annual Growth is 2016-2045.



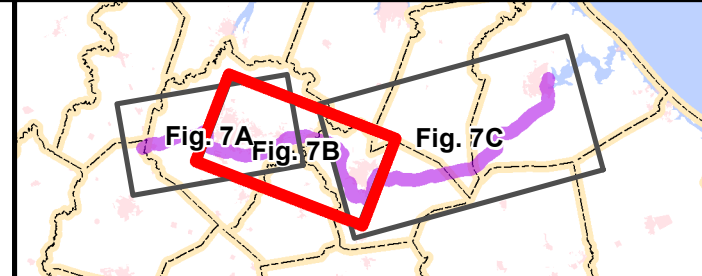
NC STRATEGIC TRANSPORTATION CORRIDOR X (STC)

FEBRUARY 2022
Source: NCOneMap, NCDOT GIS, ESRI

Legend

- STC Highway Corridor X
- Interstate
- U.S./N.C. Route
- Rail
- Major Water Bodies
- Municipal Boundary
- Counties

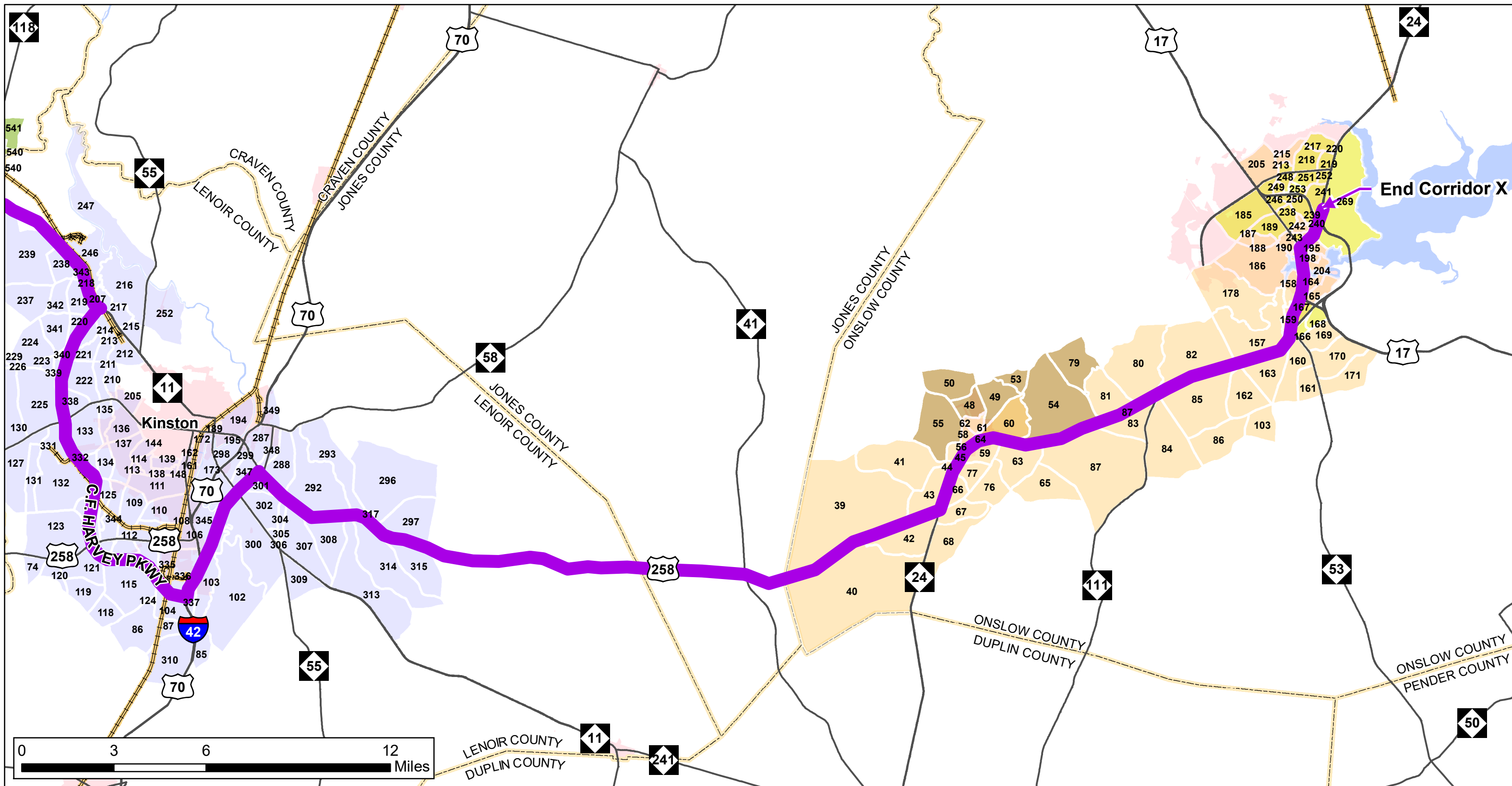
Greenville Regional Model	Kinston Regional Model
Annual Population Growth	Annual Population Growth
0.0% - 0.1%	0%
0.1% - 0.2%	
0.2% - 0.3%	
0.3% - 0.4%	



CORRIDOR X: POPULATION GROWTH - REGIONAL MODEL TRAFFIC ANALYSIS ZONES (TAZ)

FIGURE 7B: GREENVILLE TO KINSTON

No regional models were available in other segments of the corridor. TAZ Number on the map correlates to TAZ Number in Appendix G of the Mobility Analysis Report. Additional population and employment data can be found in the data tables.
*TAZ Number is the 1-4 digit solid, bold number in map. Kinston, and Jacksonville Annual Growth is 2010-2040, the Greenville Annual Growth is 2016-2045.

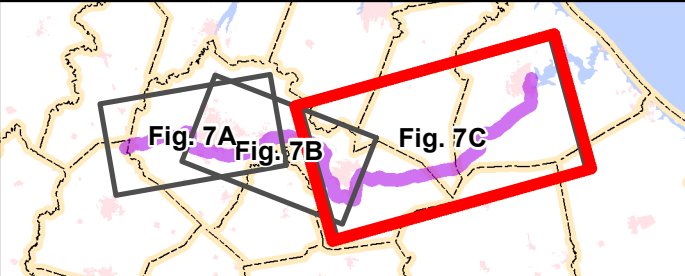


NC STRATEGIC TRANSPORTATION CORRIDOR X (STC)

FEBRUARY 2022

Source: NCOneMap, NCDOT GIS, ESRI

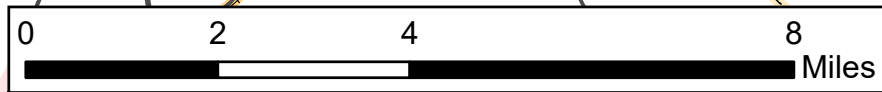
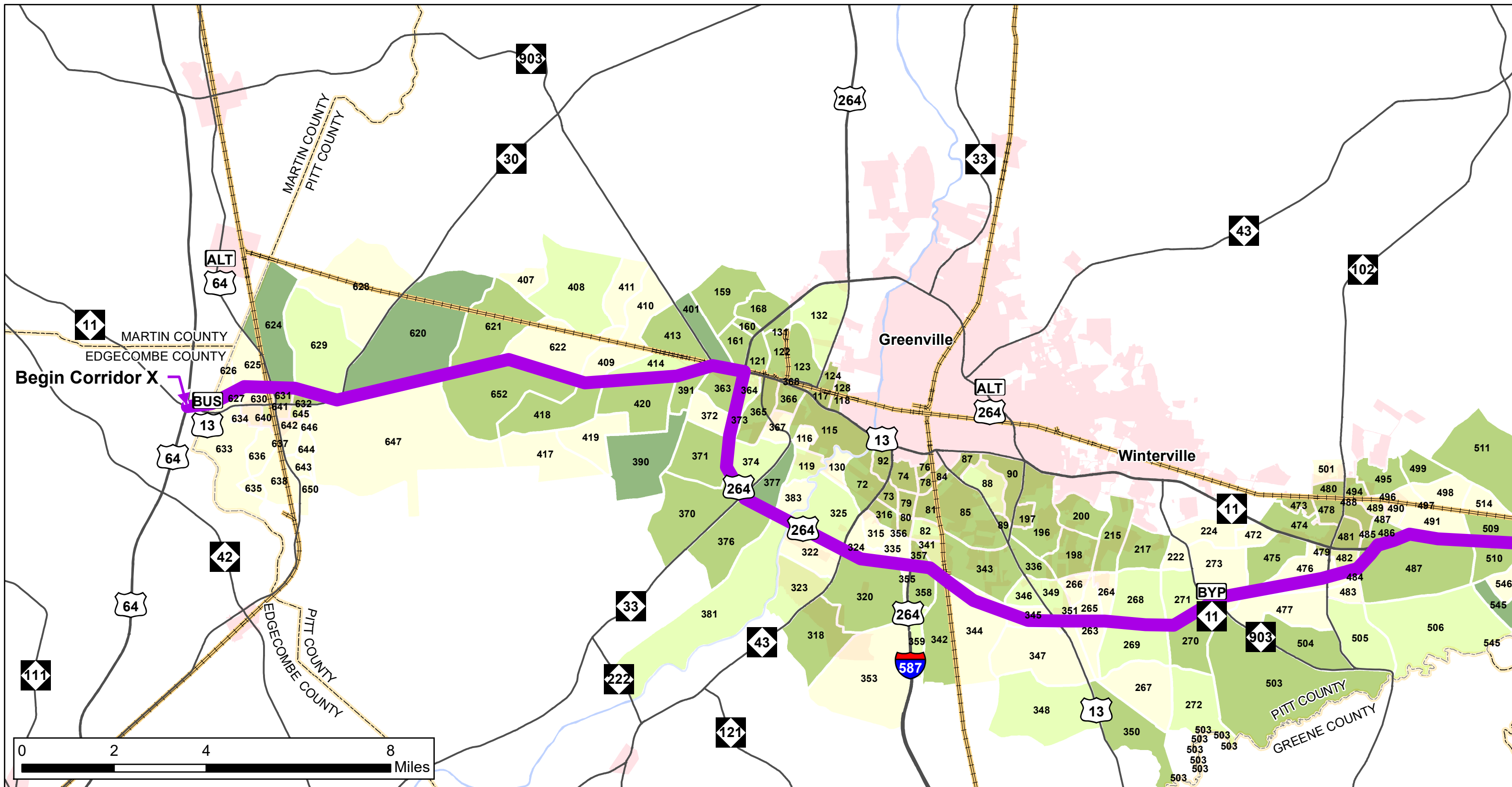
Legend		Greenville Regional Model	Kinston Regional Model	Jacksonville Regional Model
		Annual Population Growth	Annual Population Growth	Annual Population Growth
	STC Highway Corridor X			
	Interstate	0.2% - 0.3%	0%	0.0% - 0.975%
	U.S./N.C. Route			0.975% - 1.95%
	Rail			1.95% - 2.925%
	Major Water Bodies			2.925% - 3.9%
	Municipal Boundary			
	Counties			



CORRIDOR X: POPULATION GROWTH - REGIONAL MODEL TRAFFIC ANALYSIS ZONES (TAZ)

FIGURE 7C: KINSTON TO JACKSONVILLE

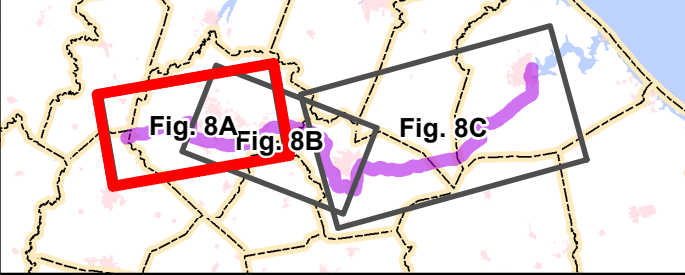
No regional models were available in other segments of the corridor. TAZ Number on the map correlates to TAZ Number in Appendix G of the Mobility Analysis Report. Additional population and employment data can be found in the data tables. *TAZ Number is the 1-4 digit solid, bold number in map. Kinston, and Jacksonville Annual Growth is 2010-2040, the Greenville Annual Growth is 2016-2045.



NC STRATEGIC TRANSPORTATION CORRIDOR X (STC)

FEBRUARY 2022
 Source: NCOneMap, NCDOT GIS, ESRI

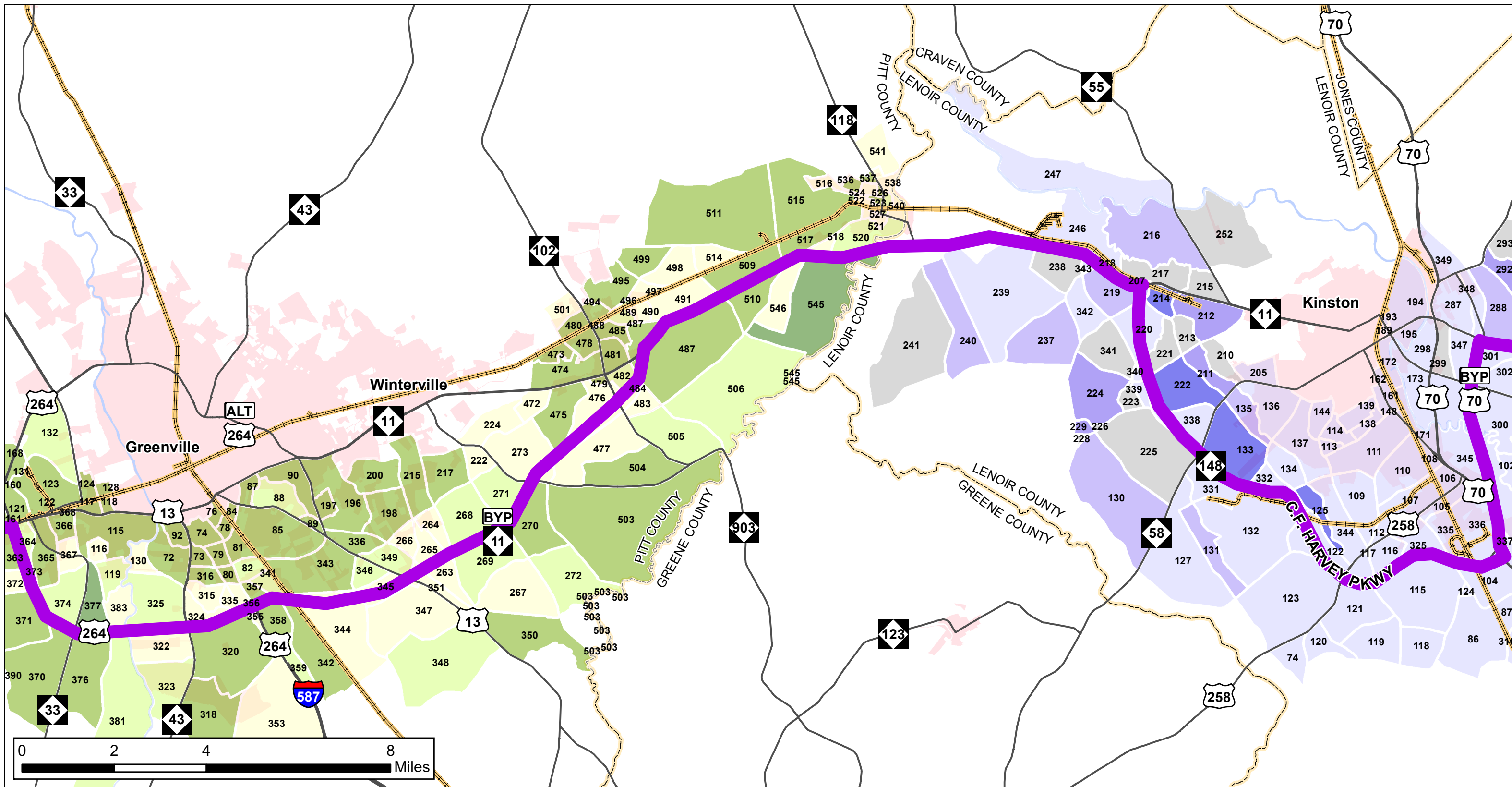
- Legend**
- █ STC Highway Corridor X
 - Interstate
 - U.S./N.C. Route
 - Rail
 - Major Water Bodies
 - Municipal Boundary
 - Counties
- Greenville Regional Model Annual Employment Growth**
- 0.0% - 0.1%
 - 0.1% - 0.2%
 - 0.2% - 0.3%
 - 0.3% - 0.4%



CORRIDOR X: EMPLOYMENT GROWTH - REGIONAL MODEL TRAFFIC ANALYSIS ZONES (TAZ)

FIGURE 8A: U.S. 13 TO GREENVILLE

No regional models were available in other segments of the corridor. TAZ Number on the map correlates to TAZ Number in Appendix G of the Mobility Analysis Report. Additional population and employment data can be found in the data tables. *TAZ Number is the 1-4 digit solid, bold number in map. Kinston, and Jacksonville Annual Growth is 2010-2040, the Greenville Annual Growth is 2016-2045.



NC STRATEGIC TRANSPORTATION CORRIDOR X (STC)

FEBRUARY 2022
Source: NCOneMap, NCDOT GIS, ESRI

Legend

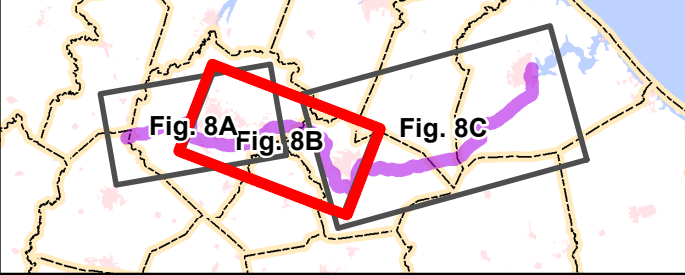
- STC Highway Corridor X
- Interstate
- U.S./N.C. Route
- Rail
- Major Water Bodies
- Municipal Boundary
- Counties

Greenville Regional Model Annual Employment Growth

- 0.0% - 0.1%
- 0.1% - 0.2%
- 0.2% - 0.3%
- 0.3% - 0.4%

Kinston Regional Model Annual Employment Growth

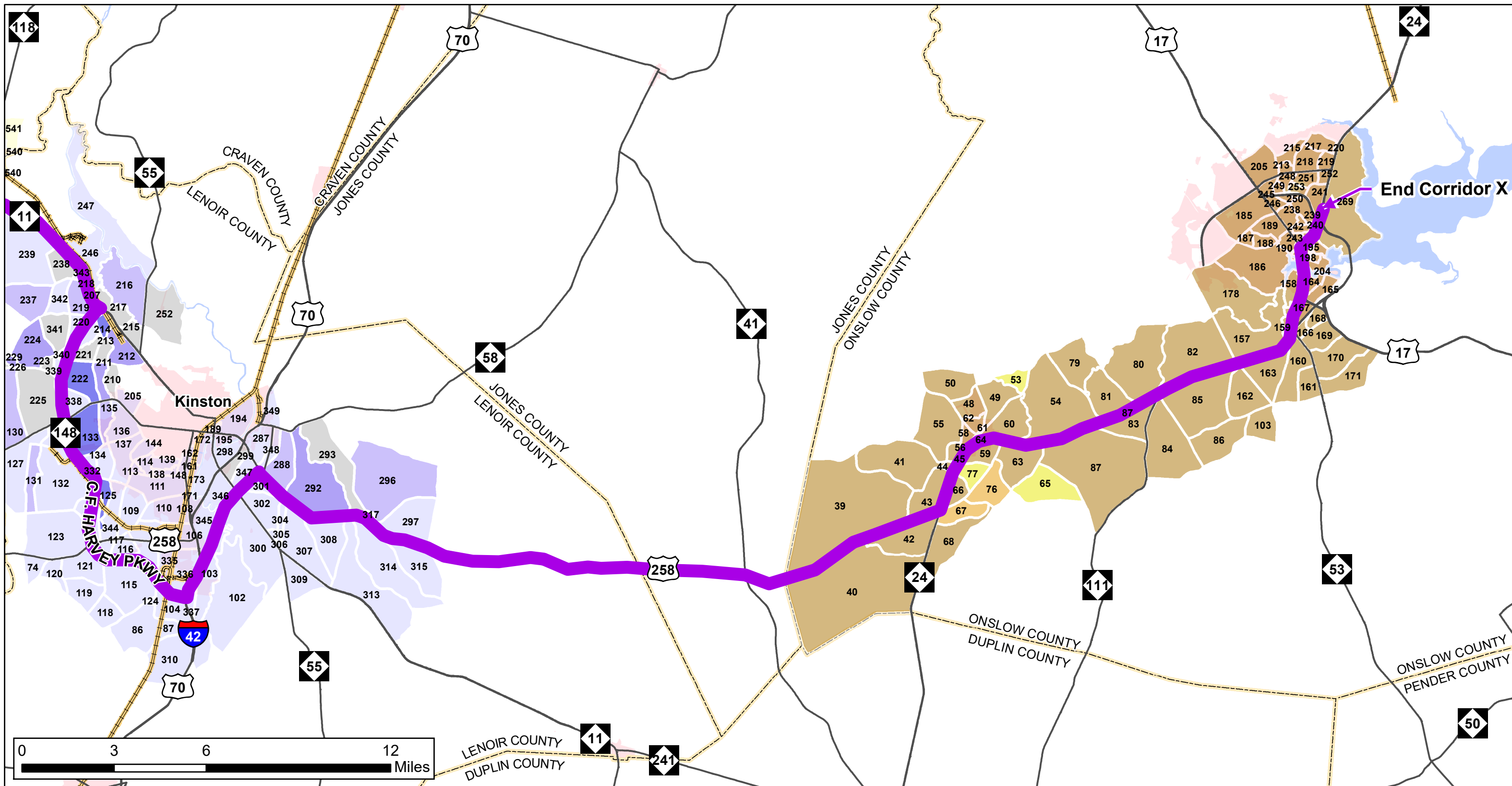
- <0%
- 0.0% - 4.5%
- 4.5% - 9.1%
- 9.1% - 13.6%
- 13.6% - 18.2%



CORRIDOR X: EMPLOYMENT GROWTH - REGIONAL MODEL TRAFFIC ANALYSIS ZONES (TAZ)

FIGURE 8B: GREENVILLE TO KINSTON

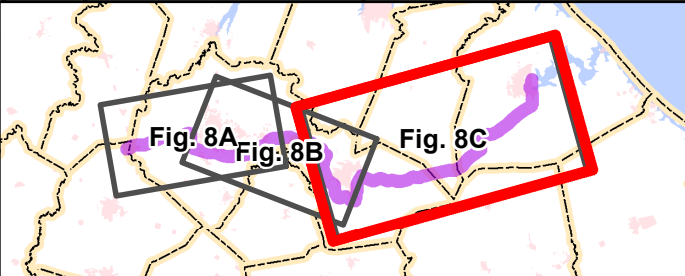
No regional models were available in other segments of the corridor. TAZ Number on the map correlates to TAZ Number in Appendix G of the Mobility Analysis Report. Additional population and employment data can be found in the data tables. *TAZ Number is the 1-4 digit solid, bold number in map. Kinston, and Jacksonville Annual Growth is 2010-2040, the Greenville Annual Growth is 2016-2045.



NC STRATEGIC TRANSPORTATION CORRIDOR X (STC)

FEBRUARY 2022
Source: NCOneMap, NCDOT GIS, ESRI

Legend		Greenville Regional Model	Kinston Regional Model	Jacksonville Regional Model
		Annual Employment Growth	Annual Employment Growth	Annual Employment Growth
	STC Highway Corridor X			
	Interstate			
	U.S./N.C. Route			
	Rail			
	Major Water Bodies			
	Municipal Boundary			
	Counties			



CORRIDOR X: EMPLOYMENT GROWTH - REGIONAL MODEL TRAFFIC ANALYSIS ZONES (TAZ)

FIGURE 8C: KINSTON TO JACKSONVILLE

No regional models were available in other segments of the corridor. TAZ Number on the map correlates to TAZ Number in Appendix G of the Mobility Analysis Report. Additional population and employment data can be found in the data tables.
*TAZ Number is the 1-4 digit solid, bold number in map. Kinston, and Jacksonville Annual Growth is 2010-2040, the Greenville Annual Growth is 2016-2045.