



NCDOT Prioritization 3.0 Project Summary

SPOT ID: H090383

Mode: Highway

Status: Submitted

US-117

From/Cross Street: NC 55

Specific Improvement Type: 6 - Widen Existing Roadway and Construct Part on New Location

To: US 117 Relocation South of US 70

Project Category: Statewide Mobility

Length: 12.71

TIP#: U-3125

Fully Funded in Draft STIP? No

Cost to NCDOT: \$230,209,000

Description:

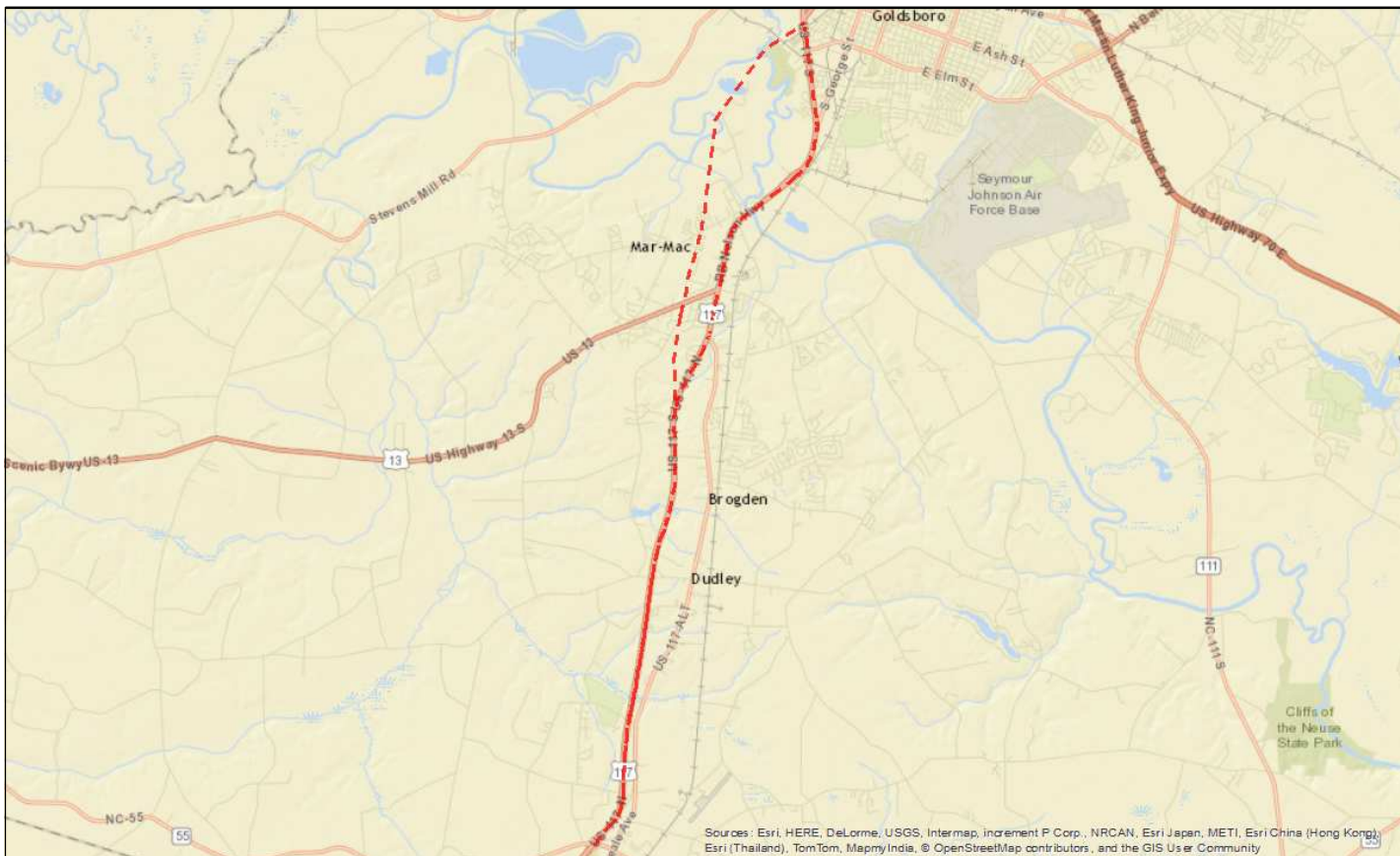
NC 55 to US 117 Relocation South of US 70. Upgrade Roadway to Freeway Standards, Part on New Location

Division(s): Division 4

County(s): WAYNE

MPOS(s)/RPO(s): Goldsboro Urban Area MPO, East Carolina RPO

Project Location



Statewide Mobility Total Score: 18.68

Quantitative Score	Division Engineer Local Input Points	MPO/RPO Local Input Points
Congestion (V/C) (30%) 26.25	N/A	N/A
Safety (10%) 52.15		
Economic Competitiveness (10%) 20.20		
Multimodal + [Freight & Military] (20%) 16.59		
[Travel Time] Benefit/Cost (30%) 0.84		
Totals: Weight: 100% Weighted Score: 18.68		

Regional Impact Total Score: 31.93

Quantitative Score	Division Engineer Local Input Points	MPO/RPO Local Input Points
Congestion (V/C) (15%) 26.25	Percent: 15% Points: 0	Percent: 15% Points: 100
Safety (15%) 52.15		
Lane Width (10%) 0.00		
[Paved] Shoulder Width (10%) 50.00		
[Travel Time] Benefit/Cost (20%) 0.84		
Totals: Weight: 70% Weighted Score: 16.93		

Division Needs Total Score: 37.92

Quantitative Score	Division Engineer Local Input Points	MPO/RPO Local Input Points
Congestion (V/C) (10%) 26.25	Percent: 25% Points: 0	Percent: 25% Points: 100
Safety (10%) 52.15		
Lane Width (10%) 0.00		
[Paved] Shoulder Width (10%) 50.00		
[Travel Time] Benefit/Cost (10%) 0.84		
Totals: Weight: 50% Weighted Score: 12.92		

Project Data ***Existing Conditions**

Existing Cross-Section:	
Speed Limit:	53
Length (miles):	12.7
Facility Type:	Multi-Lane Highway
Access Control:	Limited
Functional Classification:	Other Principal Arterial
Terrain Type:	Level
Lane Width:	12
Paved Shoulder Width:	2
Roadway has Curb & Gutter?	No
Volume (AADT):	17266
Capacity:	53548.22
Volume/Capacity Ratio:	0.32
% Autos:	90%
% Trucks:	10%
Truck Volume:	1705.11
Crash Density:	44.89
Crash Severity:	64.07
Critical Crash Rate:	47.52
Crash Frequency:	0
Severity Index:	0
County Tier Designation:	2
Non-Interstate STRAHNET Route?	Yes
Average Commuting Time:	21
Existing Median Type (for Cost Estimation):	Divided
Pavement Condition Rating:	84
Actual Congested Speed:	14.46
Travel Time Index:	1.27

Project Benefits

Project Cross-Section:	4A - 4 Lane Divided (46' Depressed Median) with Paved Shoulders
Speed Limit:	70
Length (miles):	12.71
Facility Type:	Freeway
Access Control:	Full
Functional Classification:	Other Principal Arterial-Other Freeway
TerrainType:	Level
DOT Design Lane Width:	12
DOT Design Paved Shoulder Width:	4
Travel Time Savings for 30 Years (Total):	8463457.85
Travel Time Savings for 30 Years (Autos):	7627643.67
Travel Time Savings for 30 Years (Trucks):	835814.18
Long-Term Employment:	139
% Change in Economy:	0.000265
Provides Direct Connection to Transportation Terminal?	No
Does project upgrade how the roadway functions?	Yes
In CTP or LRTP?	No
CTP/LRTP Name:	
CTP/LRTP Completion Year:	
Submitted by:	Division 4

* Data reflects calculations which include weighted averages (where applicable) and represent raw output from the Department's SPOT Online tool and associated databases.

Project Ownership**Division**

Division	Percent	Regional Impact	Division Needs
Division 4	100%	0	0
	0%	0	0
	0%	0	0
TOTAL Division Points		0	0

MPO/RPO

MPO/RPO	Percent	Regional Impact	Division Needs
Goldsboro Urban Area MPO	82%	82	82
East Carolina RPO	18%	18	18
	0%	0	0
TOTAL MPO/RPO Points		100	100

Project Cost and Source

Construction Cost:	\$194,826,000	TIP Unit
Right-of-Way Cost:	\$31,592,000	Cost Estimation Tool
Utilities Cost:	\$3,791,000	Cost Estimation Tool
Total Project Cost:	\$230,209,000	
Other Funding:	\$0	None
Cost to NCDOT :	\$230,209,000	