



# NCDOT Prioritization 3.0 Project Summary

SPOT ID: H129646

Mode: Highway

Status: Submitted

## (New Route - Cape Fear Crossings)

From/Cross Street: US 17 in Brunswick County

Specific Improvement Type: 5 - Construct Roadway on New Location

To: US 421 (Independence Boulevard) in New Hanover County

Project Category: Statewide Mobility

Length: 9.75

TIP#: U-4738

Fully Funded in Draft STIP? No

Cost to NCDOT: \$641,996,000

### Description:

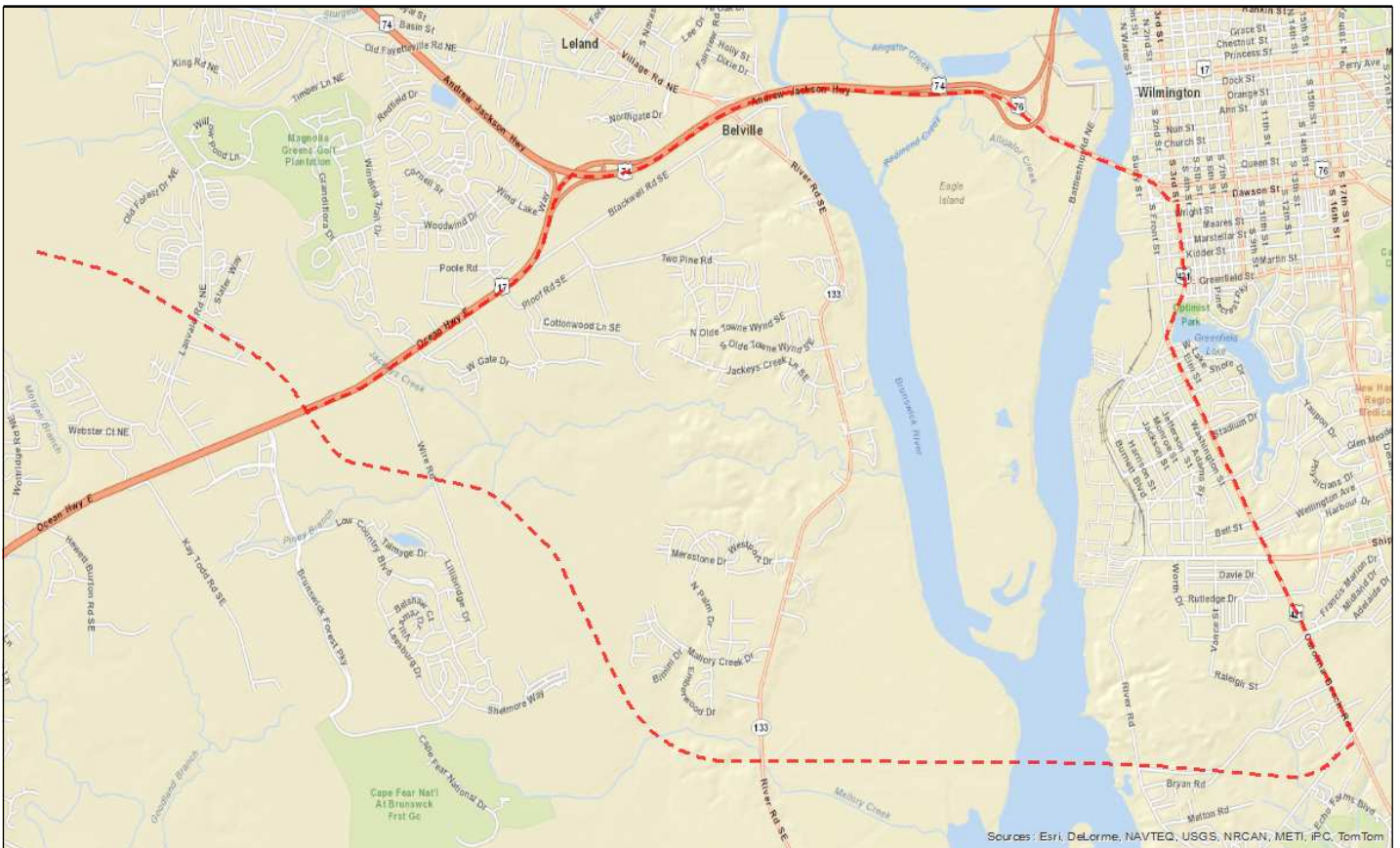
Construct Freeway on New Location with a Structure Over the Cape Fear River

Division(s): Division 3

County(s): BRUNSWICK, NEW HANOVER

MPOS(s)/RPO(s): Wilmington Urban Area MPO

### Project Location



Sources: Esri, DeLorme, NAVTEQ, USGS, NRCAN, METI, JFC, TomTom

**Statewide Mobility Total Score: 38.38**

<b>Quantitative Score</b>	<b>Division Engineer Local Input Points</b>	<b>MPO/RPO Local Input Points</b>
Congestion (V/C) (30%) 60.25 Safety (10%) 71.76 Economic Competitiveness (10%) 65.45 Multimodal + [Freight & Military] (20%) 31.05 [Travel Time] Benefit/Cost (30%) 1.24	N/A	N/A
<b>Totals: Weight: 100% Weighted Score: 38.38</b>		

**Regional Impact Total Score: 0**

<b>Quantitative Score</b>	<b>Division Engineer Local Input Points</b>	<b>MPO/RPO Local Input Points</b>
Safety (25%) 71.76 Multimodal + [Freight & Military] (25%) 31.05 [Travel Time] Benefit/Cost (20%) 1.24	Percent: 15% Points:	Percent: 15% Points:
<b>Totals: Weight: 70% Weighted Score: 25.95</b>		

**Division Needs Total Score: 0**

<b>Quantitative Score</b>	<b>Division Engineer Local Input Points</b>	<b>MPO/RPO Local Input Points</b>
Congestion (V/C) (20%) 60.25 Safety (20%) 71.76 Multimodal + [Freight & Military] (10%) 31.05	Percent: 25% Points:	Percent: 25% Points:
<b>Totals: Weight: 50% Weighted Score: 29.51</b>		

**Project Data \*****Existing Conditions**

Existing Cross-Section:	
Speed Limit:	46
Length (miles);	10.12
Facility Type:	Freeway
Access Control:	None
Functional Classification:	Other Principal Arterial
Terrain Type:	Level
Lane Width:	12
Paved Shoulder Width:	2
Roadway has Curb & Gutter?	No
Volume (AADT):	40538.96
Capacity:	55240.52
Volume/Capacity Ratio:	0.73
% Autos:	94%
% Trucks:	6%
Truck Volume:	2539.9
Crash Density:	83.27
Crash Severity:	61.96
Critical Crash Rate:	70.08
Crash Frequency:	0
Severity Index:	0
County Tier Designation:	3
Non-Interstate STRAHNET Route?	Yes
Average Commuting Time:	23
Existing Median Type (for Cost Estimation):	Divided
Pavement Condition Rating:	75
Actual Congested Speed:	42.72
Travel Time Index:	0.97

**Project Benefits**

Project Cross-Section:	4A - 4 Lane Divided (46' Depressed Median) with Paved Shoulders
Speed Limit:	65
Length (miles):	9.75
Facility Type:	Freeway
Access Control:	Full
Functional Classification:	Interstate
Terrain Type:	Level
DOT Design Lane Width:	12
DOT Design Paved Shoulder Width:	10
Travel Time Savings for 30 Years (Total):	35347858.87
Travel Time Savings for 30 Years (Autos):	33133195.71
Travel Time Savings for 30 Years (Trucks):	2214663.16
Long-Term Employment:	556
% Change in Economy:	0.00075292
Provides Direct Connection to Transportation Terminal?	No
Does project upgrade how the roadway functions?	Yes
In CTP or LRTP?	No
CTP/LRTP Name:	
CTP/LRTP Completion Year:	
Submitted by:	Division 3

\* Data reflects calculations which include weighted averages (where applicable) and represent raw output from the Department's SPOT On!ine tool and associated databases.

**Project Ownership**

**Division**

<b>Division</b>	<b>Percent</b>	<b>Regional Impact</b>	<b>Division Needs</b>
Division 3	100%	0	0
	0%	0	0
	0%	0	0
<b>TOTAL Division Points</b>		<b>0</b>	<b>0</b>

**MPO/RPO**

<b>MPO/RPO</b>	<b>Percent</b>	<b>Regional Impact</b>	<b>Division Needs</b>
Wilmington Urban Area MPO	100%	0	0
	0%	0	0
	0%	0	0
<b>TOTAL MPO/RPO Points</b>		<b>0</b>	<b>0</b>

**Project Cost and Source**

Construction Cost:	\$788,875,000	TIP Unit
Right-of-Way Cost:	\$108,929,000	TIP Unit
Utilities Cost:	\$3,750,000	TIP Unit
Total Project Cost:	\$901,554,000	
Other Funding:	\$259,557,500	Toll Revenue less Roadway Maintenance & Financing
<b>Cost to NCDOT :</b>	<b>\$641,996,000</b>	