



NCDOT Prioritization 3.0 Project Summary

SPOT ID: H140728

Mode: Highway

Status: Submitted

I-40

From/Cross Street: SR 1728 (Wade Ave)

Specific Improvement Type: 1 - Widen Existing Roadway

To: I-440

Project Category: Statewide Mobility

Length: 13.16

TIP#:

Fully Funded in Draft STIP? No

Cost to NCDOT: \$488,820,000

Description:

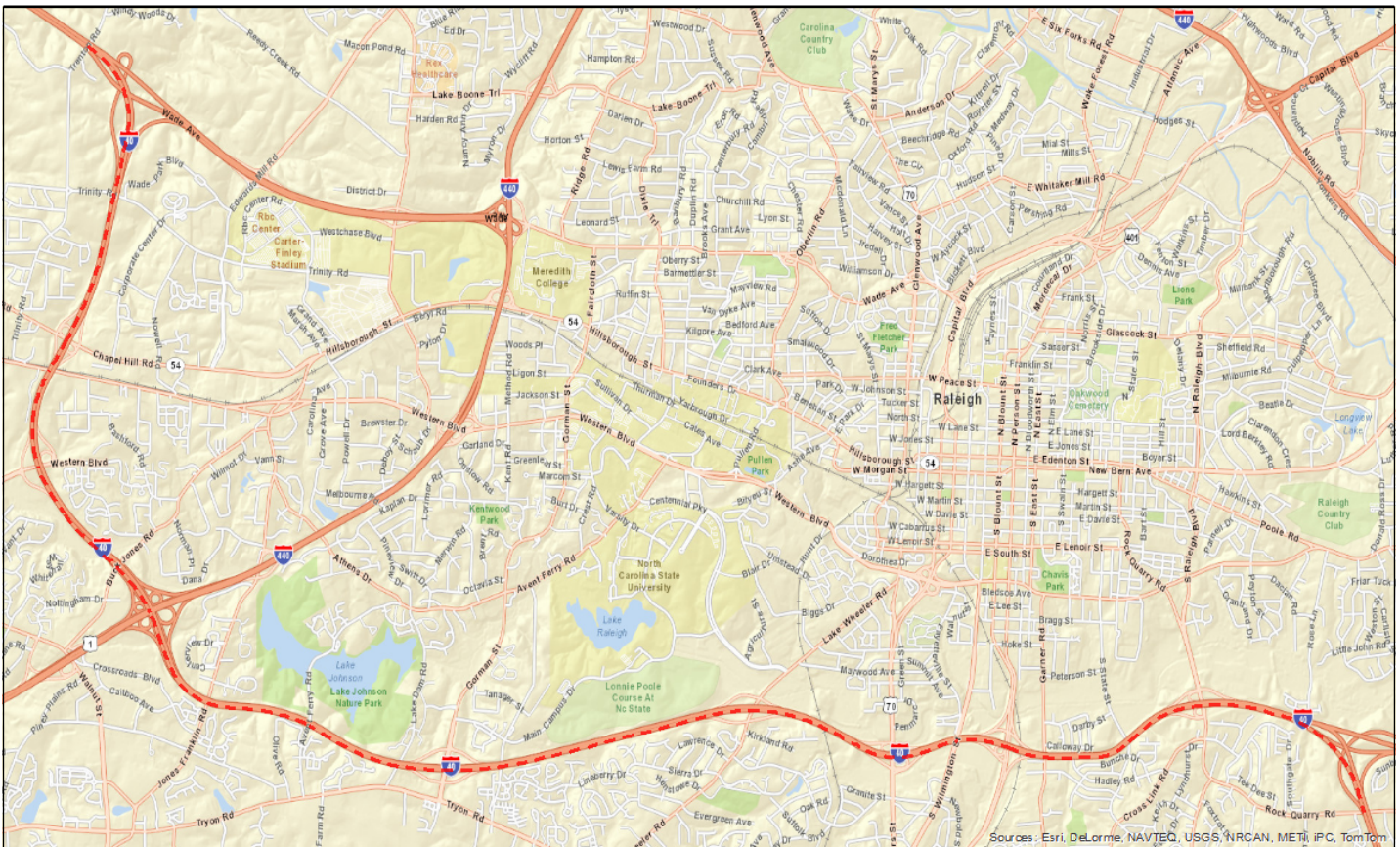
Construct Managed Lanes in each direction

Division(s): Division 5

County(s): WAKE

MPOS(s)/RPO(s): Capital Area MPO

Project Location



Statewide Mobility Total Score: 52.47

Quantitative Score		Division Engineer Local Input Points	MPO/RPO Local Input Points
Congestion (V/C) (30%)	97.75	N/A	N/A
Safety (10%)	72.14		
Economic Competitiveness (10%)	90.83		
Multimodal + [Freight & Military] (20%)	29.76		
[Travel Time] Benefit/Cost (30%)	3.00		
Totals: Weight: 100% Weighted Score: 52.47			

Regional Impact Total Score: 0

Quantitative Score		Division Engineer Local Input Points	MPO/RPO Local Input Points
Congestion (V/C) (25%)	97.75	Percent: 15% Points:	Percent: 15% Points:
Safety (10%)	72.14		
[Travel Time] Benefit/Cost (25%)	3.00		
Accessibility / Connectivity (10%)	40.16		
Totals: Weight: 70% Weighted Score: 36.42			

Division Needs Total Score: 0

Quantitative Score		Division Engineer Local Input Points	MPO/RPO Local Input Points
Congestion (V/C) (20%)	97.75	Percent: 25% Points:	Percent: 25% Points:
Safety (10%)	72.14		
[Travel Time] Benefit/Cost (20%)	3.00		
Totals: Weight: 50% Weighted Score: 27.36			

Project Data ***Existing Conditions**

Existing Cross-Section:	
Speed Limit:	65
Length (miles):	13.16
Facility Type:	Freeway
Access Control:	Full
Functional Classification:	Interstate
Terrain Type:	Rolling
Lane Width:	12
Paved Shoulder Width:	10
Roadway has Curb & Gutter?	No
Volume (AADT):	108465.33
Capacity:	119700.85
Volume/Capacity Ratio:	0.91
% Autos:	95%
% Trucks:	5%
Truck Volume:	5952.01
Crash Density:	83.37
Crash Severity:	52.22
Critical Crash Rate:	80.84
Crash Frequency:	0
Severity Index:	0
County Tier Designation:	3
Non-Interstate STRAHNET Route?	No
Average Commuting Time:	22
Existing Median Type (for Cost Estimation):	Divided
Pavement Condition Rating:	94
Actual Congested Speed:	57.52
Travel Time Index:	1.13

Project Benefits

Project Cross-Section:	10B - 10 Lane Freeway (8 General Purpose Lanes, 2 Managed Lanes, and 27' Median with Jersey Barrier) with Paved Shoulders
Speed Limit:	65
Length (miles):	13.16
Facility Type:	Freeway
Access Control:	Full
Functional Classification:	Interstate
Terrain Type:	Rolling
DOT Design Lane Width:	12
DOT Design Paved Shoulder Width:	10
Travel Time Savings for 30 Years (Total):	65087870.46
Travel Time Savings for 30 Years (Autos):	61516189.84
Travel Time Savings for 30 Years (Trucks):	3571680.62
Long-Term Employment:	1059.62
% Change in Economy:	0.00075689
Provides Direct Connection to Transportation Terminal?	No
Does project upgrade how the roadway functions?	No
In CTP or LRTP?	Yes
CTP/LRTP Name:	2040 CAMPO MTP
CTP/LRTP Completion Year:	2012
Submitted by:	Division 5

* Data reflects calculations which include weighted averages (where applicable) and represent raw output from the Department's SPOT On!line tool and associated databases.

Project Ownership**Division**

Division	Percent	Regional Impact	Division Needs
Division 5	100%	0	0
	0%	0	0
	0%	0	0
TOTAL Division Points		0	0

MPO/RPO

MPO/RPO	Percent	Regional Impact	Division Needs
Capital Area MPO	100%	0	0
	0%	0	0
	0%	0	0
TOTAL MPO/RPO Points		0	0

Project Cost and Source

Construction Cost:	\$510,000,000	TIP Unit
Right-of-Way Cost:	\$51,000,000	TIP Unit
Utilities Cost:	\$1,200,000	TIP Unit
Total Project Cost:	\$562,200,000	
Other Funding:	\$0	None
Cost to NCDOT :	\$488,820,000	