

**Integrating Transportation and
Land Use:
Land Development Plan Standards and
Evaluation Tools**

Anna Leos-Urbel

CTE, UNC

April 26, 2006

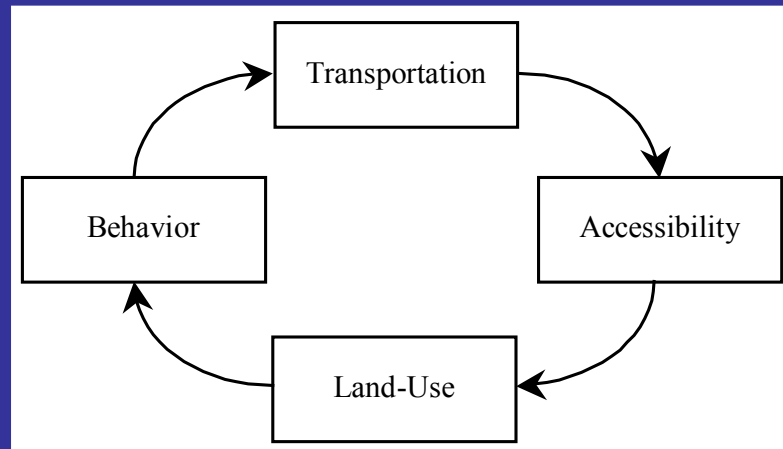
annalu@unc.edu

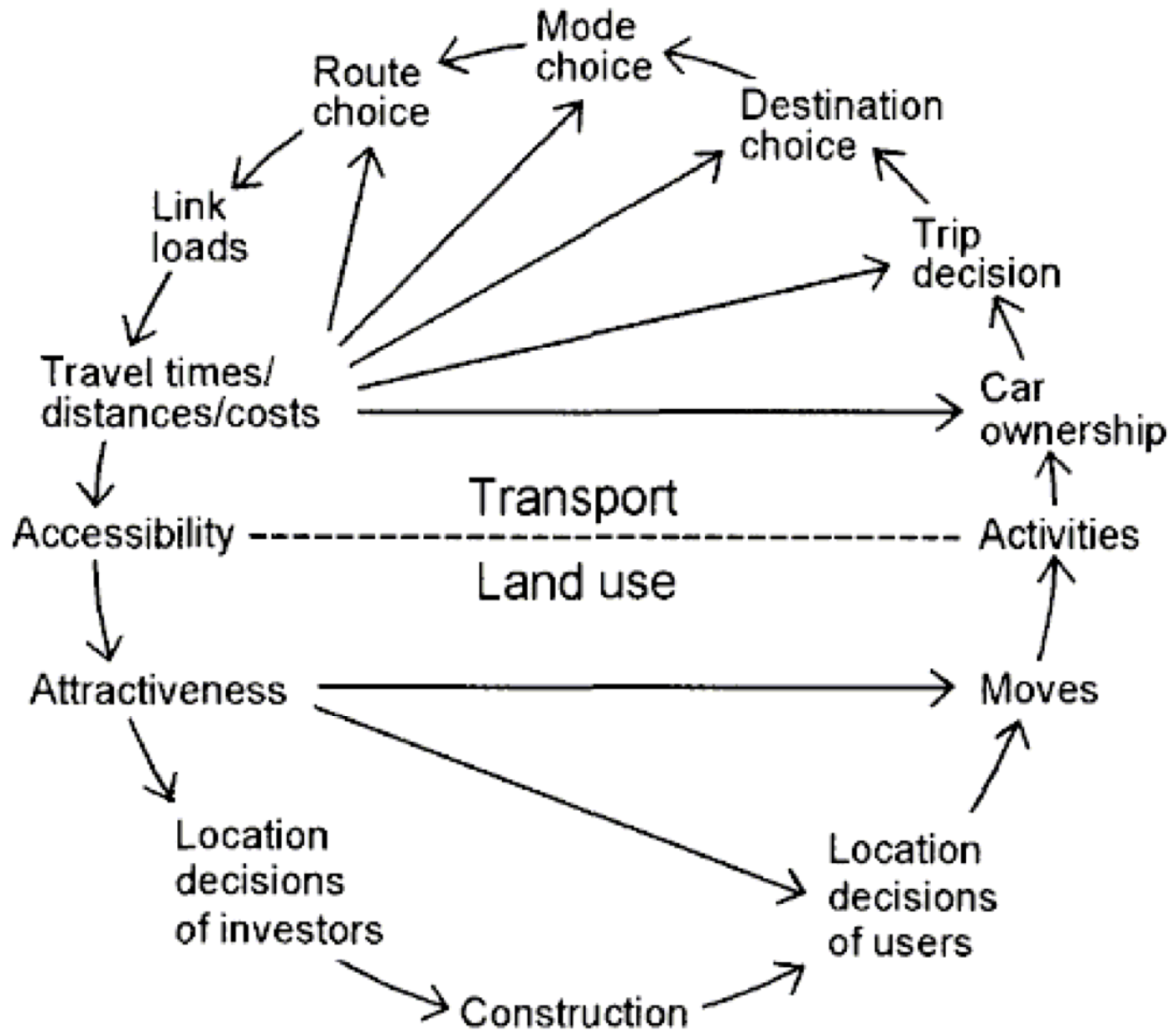
Outline

- **Land Use-Transportation Connection**
- **North Carolina Context**
- **Research Questions**
- **Land Development-Related Data and Policy Information Required for Transportation Planning**

Land Use-Transportation Connection

- Development, location decisions based on accessibility
- Accessibility based on transportation improvements
- Improvements based on existing and anticipated development
- Cycle





Planning Responsibility

- **Land Development Planning**
 - **Local government authority**
 - **Municipalities and/or counties**
 - **Make land development (LD) plans based on current transportation system**
- **Transportation Planning**
 - **MPO/DOT authority**
 - **Make transportation plans based on current LU system**

2001 Amendment to NC General Statutes

“The Department of Transportation may participate in the development and adoption of a transportation plan or updated transportation plan when all local governments within the area covered by the transportation plan have adopted land development plans within the previous five years. ...

A qualifying land development plan may be a comprehensive plan, land use plan, master plan, strategic plan, or any type of plan or policy document that expresses a jurisdiction’s goals and objectives for the development of land within that jurisdiction.” [\[1\]](#)

[\[1\]](#) G.S. 136-66.2 (b1)

Basic Goals

- **Transportation plans consistent with:**
 - Land development plans
 - Utilities and public facilities plans
- **Consistent with other localities' plans (intra-MPO)**

Basic Goals

“Environmentally friendly” plans:

- Place development where transportation can reasonably be provided**
- Place transportation facilities for minimal human and natural environment impacts**
- Are consistent with environmental regulations and polices**

Research Questions

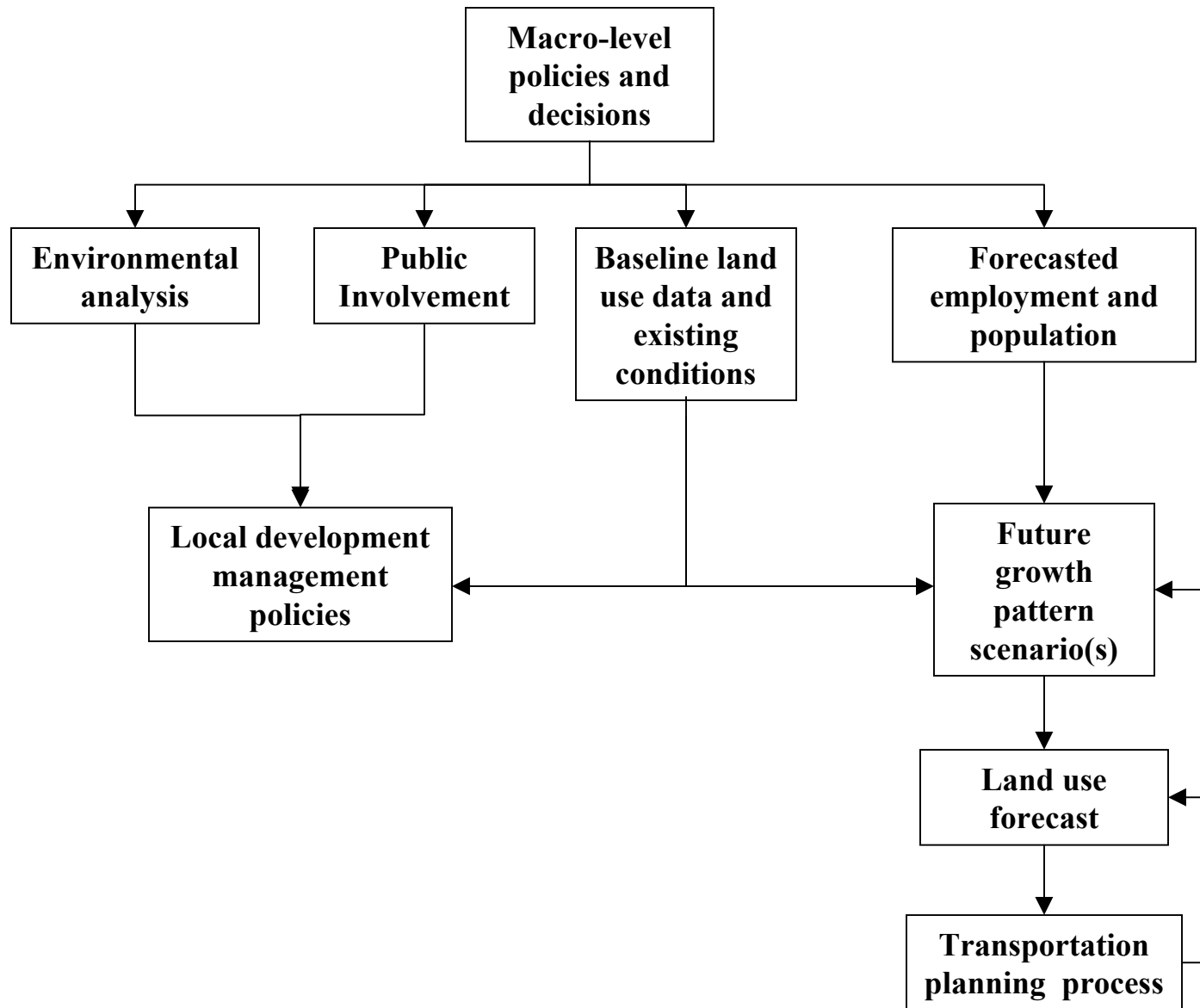
How can local Land Development Plans better feed transportation modeling and planning?

- Data components?**
- Policy information?**
- Specific transportation components?**
- Public Involvement: How do we know that the plan has general community support?**
- Plan Evaluation: How do we know that the plan has what we need?**

More specifically:

What information should the LDP contain so that you can make better travel models and predictions of transportation infrastructure demands and capacity?

Land Dev. Planning Process



Plan Components

- **Introduction to Plan**
- **Discussion of Current Conditions**
- **Explanation of Public Involvement Process**
- **Land Use Vision and Principles**
- **Land Analysis**
- **Monitoring and Implementation**

Travel Model Inputs

Most directly informed by:

- **Land Use Vision and Principles**
 - Goals
 - Objectives
 - Policies
- **Land Analysis**
 - Land Needs Assessment
 - Suitability Analysis
 - Supply and Capacity
 - Land Classification Districts

Questions for you:

- **What is missing from this list?**
- **What does not need to be on this list?**
- **Are there ways you can better include land use data in your models now?**