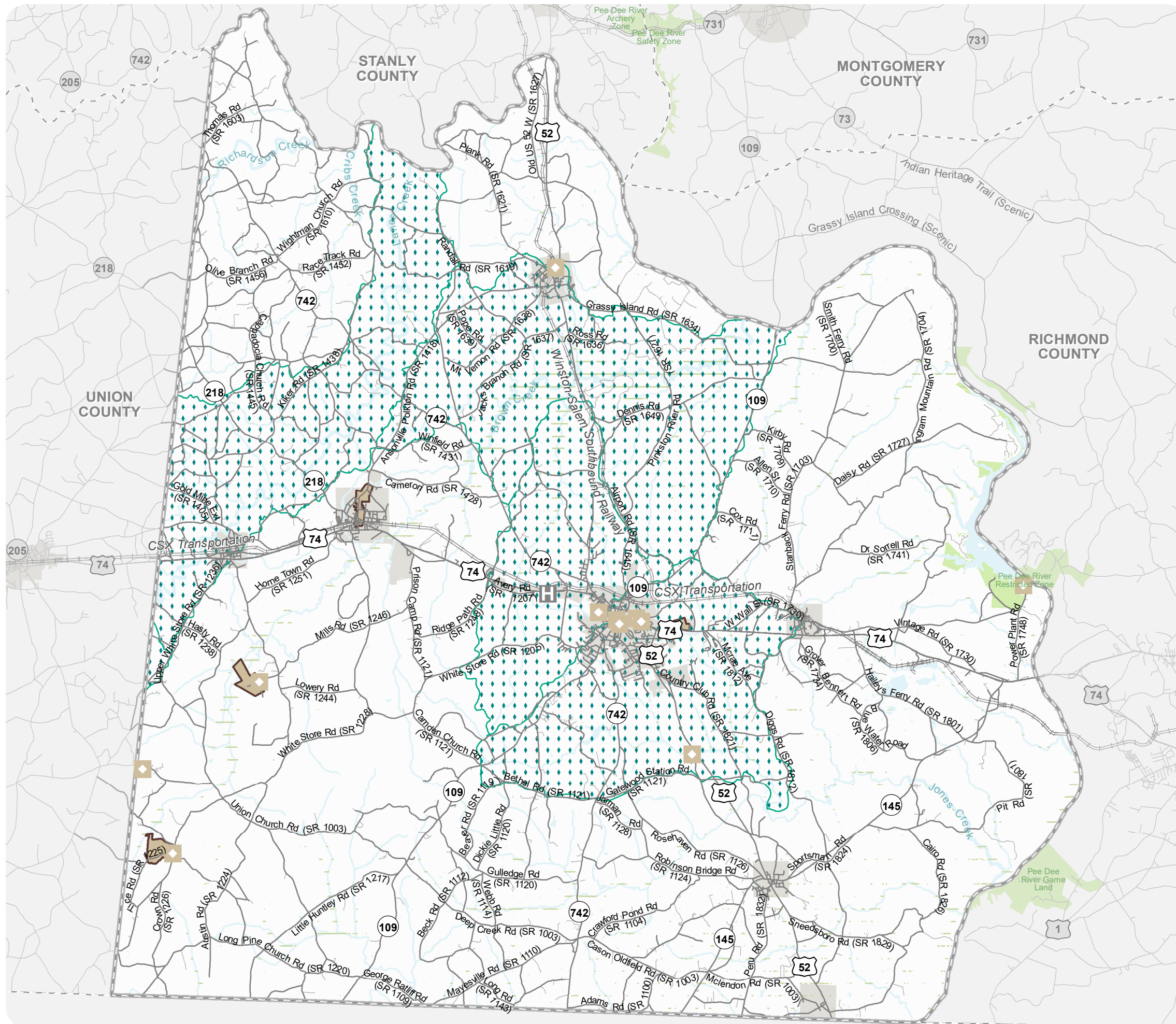


Figure 7  
**ENVIRONMENTAL FEATURES**



## ANSON COUNTY

### CTP Analysis and Information

#### Primary Environmental Features Legend

-  Hospital
-  Historic Resources - National Register and Determined Eligible (Point)
-  Targeted Local Watersheds - EEP
-  Historic Resources - National Register and Determined Eligible (Polygon)
-  National Wetlands Inventory (NWI)



WebAddress



Sheet 1.1 of 3

Base map date: September 20, 2021

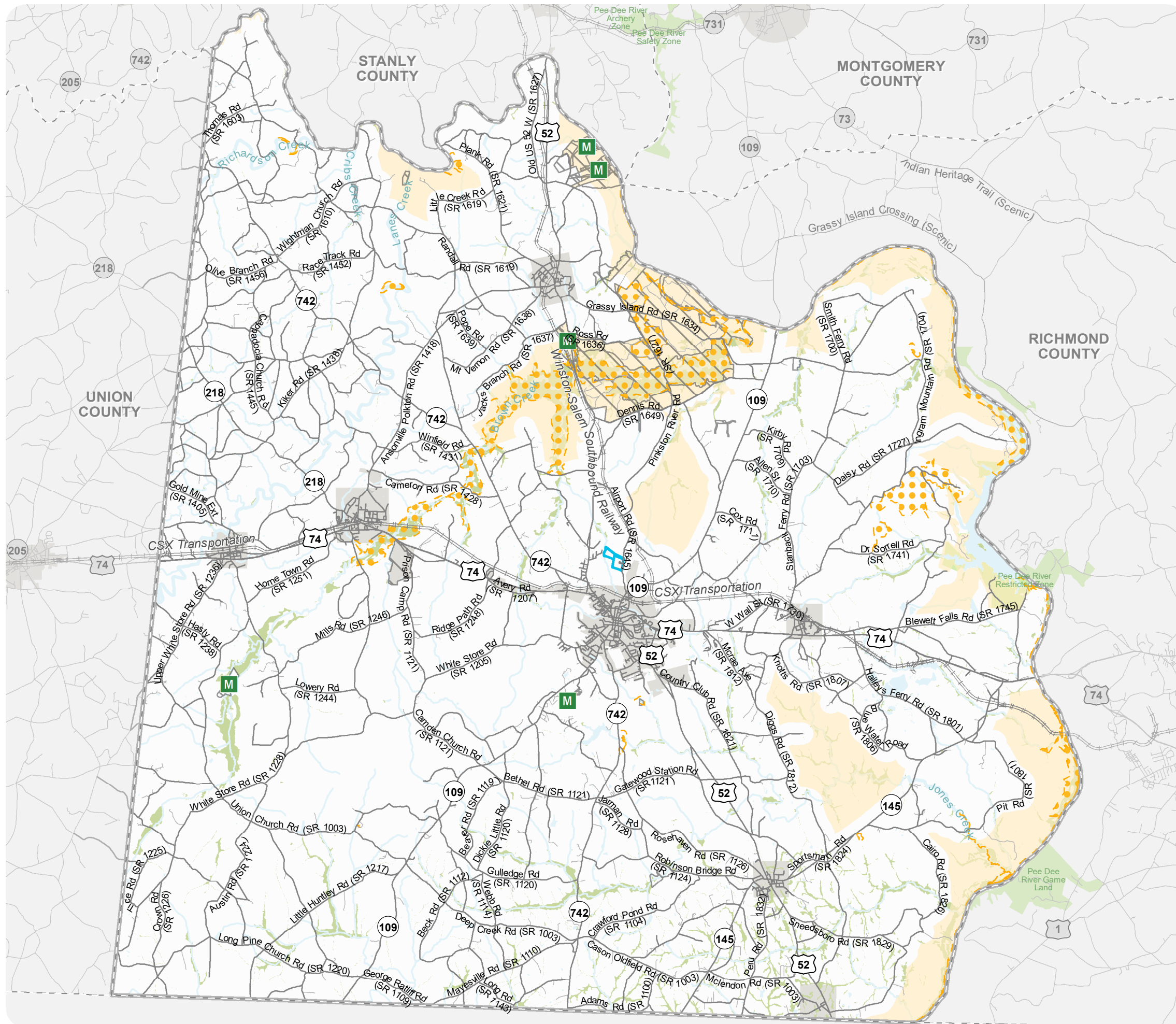
#### Legal Disclaimer

This product contains mapping data for informational and planning purposes only, and is subject to change. Users should review or consult the primary data sources to ascertain the usability of the information.

**WORKING COPY**  
 Plan Date: March 23, 2022



Figure 7  
**ENVIRONMENTAL FEATURES**



# ANSON COUNTY

## CTP Analysis and Information

### Primary Environmental Features Legend

- Mitigation Site - NCDOT Maintained
- Land and Water Conservation Fund (Recreation Projects)
- Natural Heritage Significant Areas
- Managed Areas
- Landscape Habitat Indicator Guilds



WebAddress



Sheet 1.2 of 3

Base map date: September 20, 2021

#### Legal Disclaimer

This product contains mapping data for informational and planning purposes only, and is subject to change. Users should review or consult the primary data sources to ascertain the usability of the information.











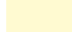


**WORKING COPY**  
 Plan Date: March 23, 2022



Figure 7  
**ENVIRONMENTAL FEATURES**



**ANSON COUNTY**  
 CTP Analysis and Information  
 Primary Environmental Features Legend

-  School - Colleges & Universities
-  24K Hydro
-  Airport Boundaries
-  Flood Hazard Area
- Biodiversity Wildlife Habitat Assessment**
-  9 - 10 (Maximum)
-  8
-  7
-  6
-  5
-  2 - 4
-  1 (Moderate)
-  0 (Unrated)
-  Impervious Surface > 20%



WebAddress



0 1 2 4 6 Miles

Sheet 1.3 of 3

Base map date: September 20, 2021

**Legal Disclaimer**

This product contains mapping data for informational and planning purposes only, and is subject to change. Users should review or consult the primary data sources to ascertain the usability of the information.

**WORKING COPY**  
 Plan Date: March 23, 2022

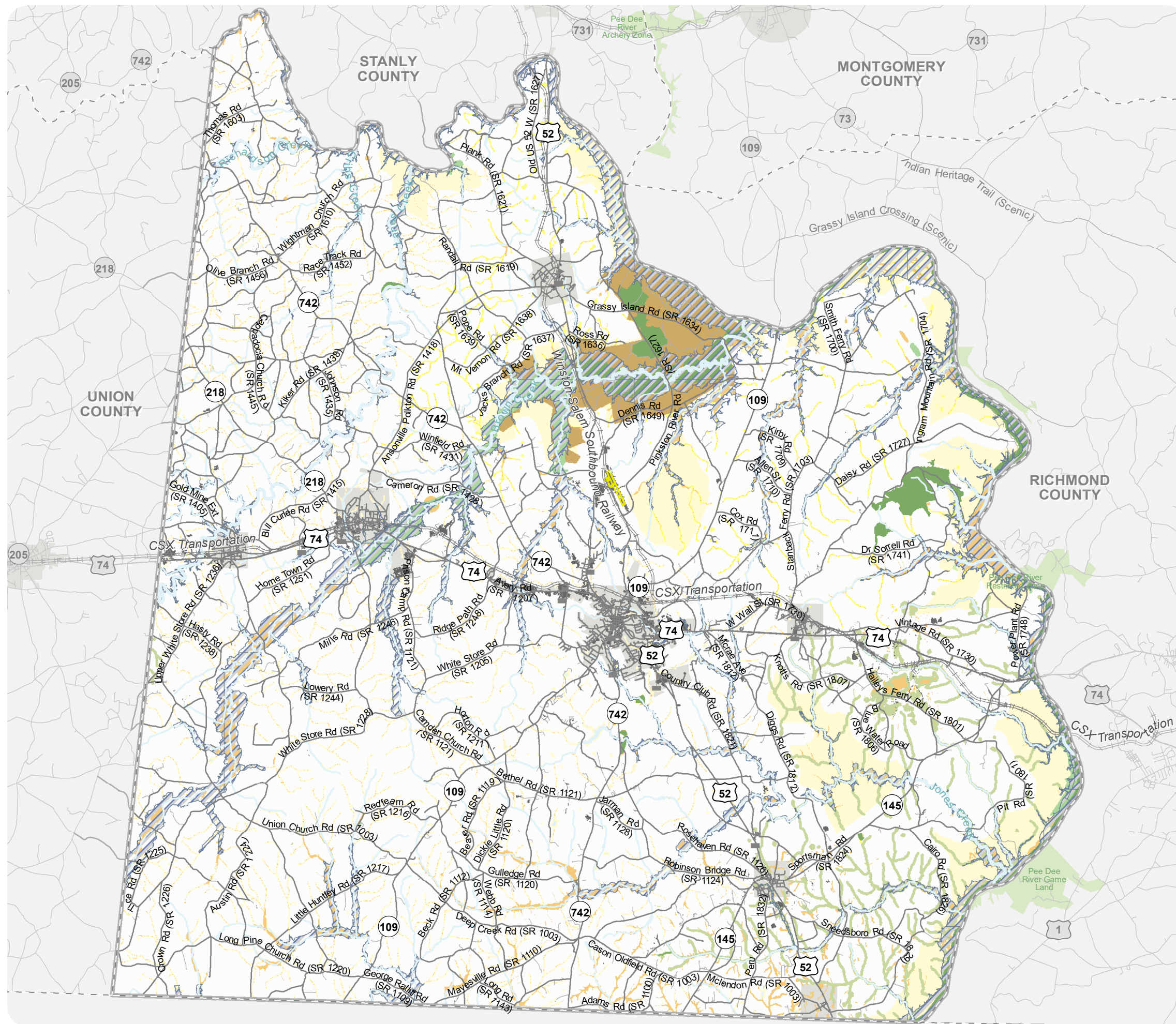
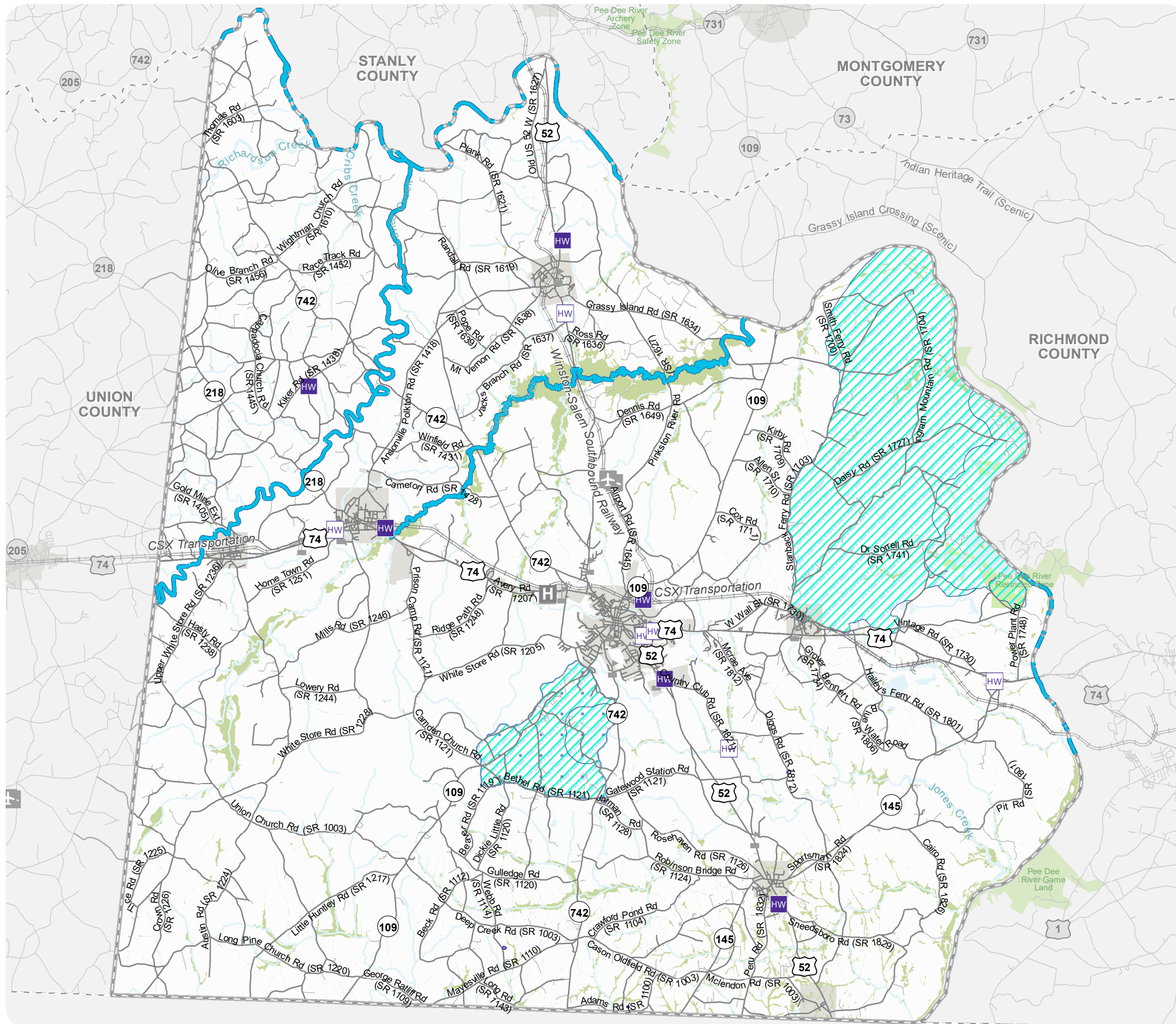











Figure 7  
**ENVIRONMENTAL FEATURES**



# ANSON COUNTY

## CTP Analysis and Information

### Environmental Features Legend

-  Hazard Substance Disposal Site
-  Hazardous Waste Facility
-  Impaired Streams
-  Hazard Substance Disposal Area
-  High Quality Waters and Outstanding Resource Water Management
-  Water Supply Watershed
-  Colonial Waterbird Nesting Sites



WebAddress



Sheet 2.1 of 3

Base map date: September 20, 2021

#### Legal Disclaimer

This product contains mapping data for informational and planning purposes only, and is subject to change. Users should review or consult the primary data sources to ascertain the usability of the information.

**WORKING COPY**  
 Plan Date: March 23, 2022







Figure 7  
**ENVIRONMENTAL FEATURES**



# ANSON COUNTY

## CTP Analysis and Information

### Environmental Features Legend

-  Boating Access - Public
-  Emergency Operation Center
-  Bicycle Routes
-  Natural Heritage Element Occurrences



WebAddress



Sheet 2.2 of 3

Base map date: September 20, 2021

#### Legal Disclaimer

This product contains mapping data for informational and planning purposes only, and is subject to change. Users should review or consult the primary data sources to ascertain the usability of the information.

**WORKING COPY**  
 Plan Date: March 23, 2022