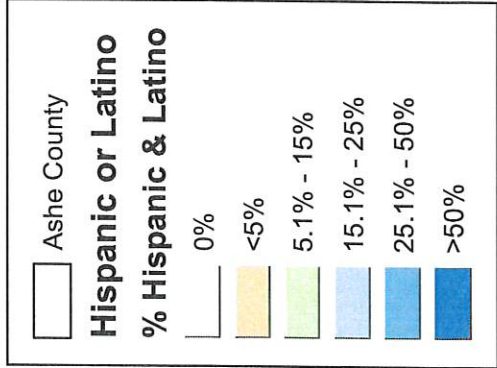
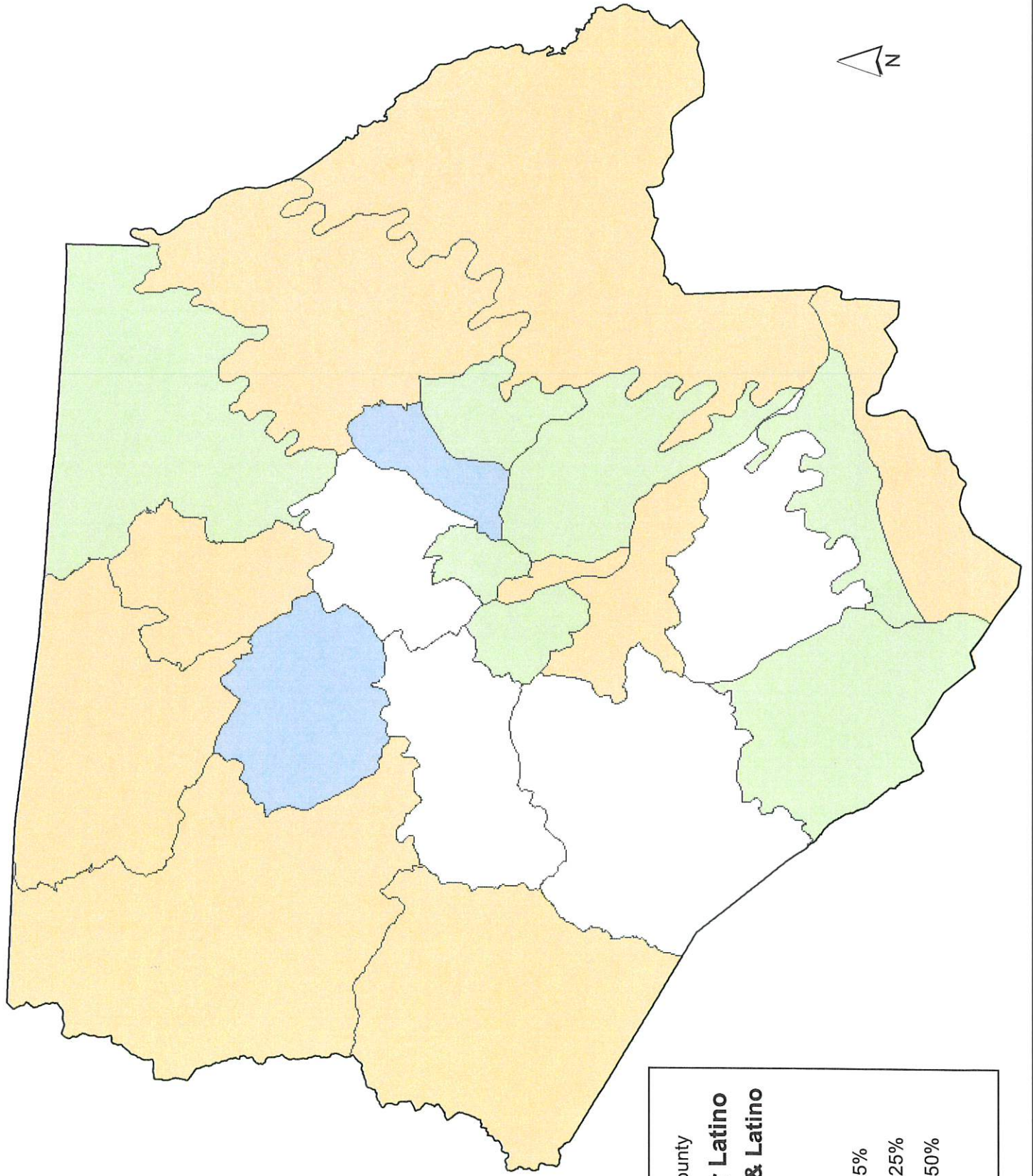
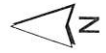
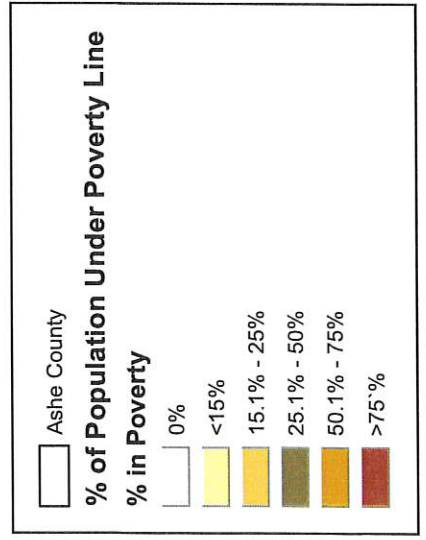
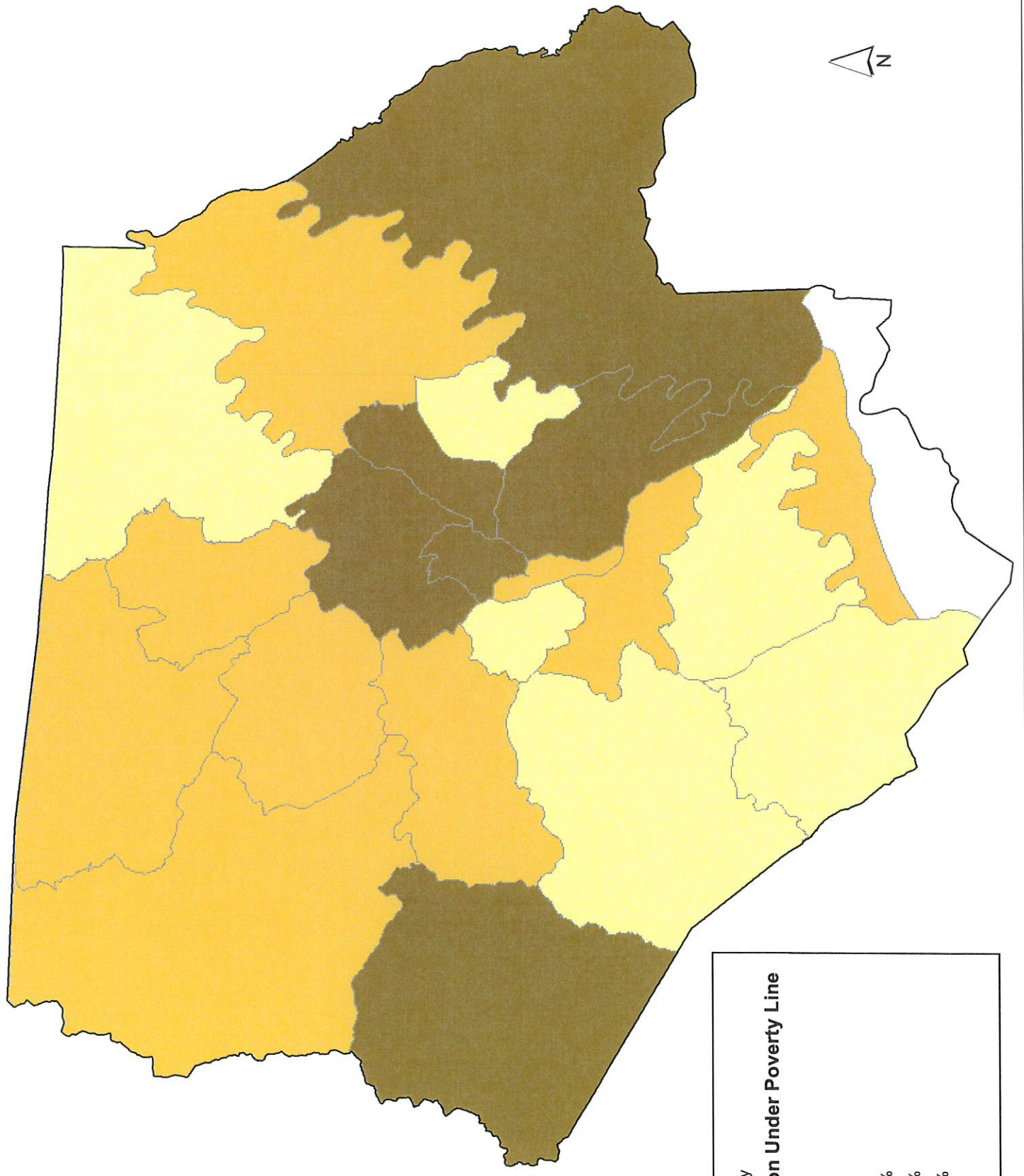








Ashe County Percent of Population Hispanic & Latino



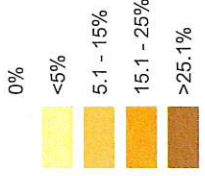
Ashe County Percent of Population Under Poverty Line



Title VI
2011-2015 ACS
Block Group Level
- Limited English
Proficiency:
Spanish
Legend

-  High Country RPO Region
-  Interstate
-  US Highways
-  NC Highways
-  Other Roads
-  County Boundaries

LEP Spanish

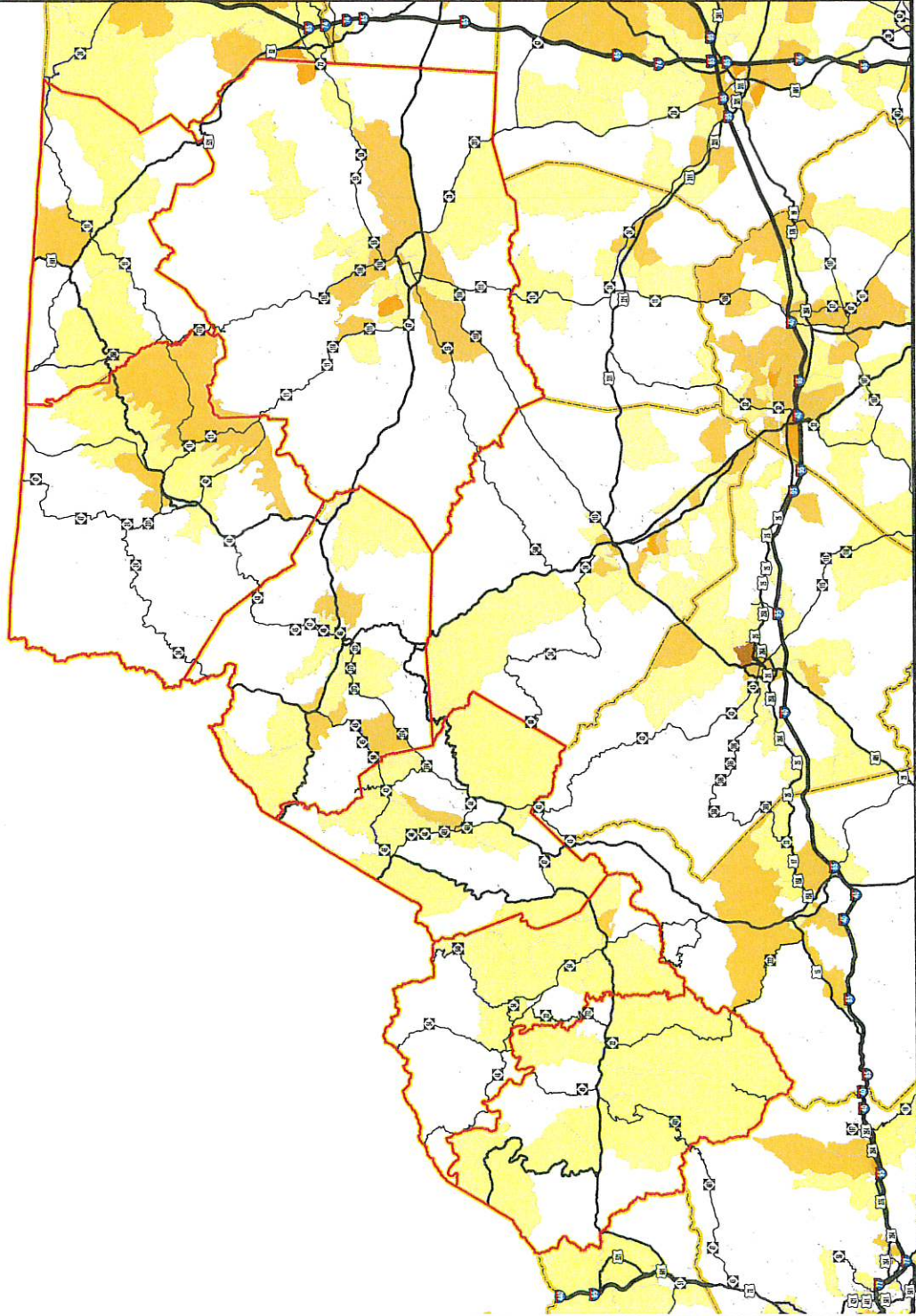


123 - Population in
Census Block Group

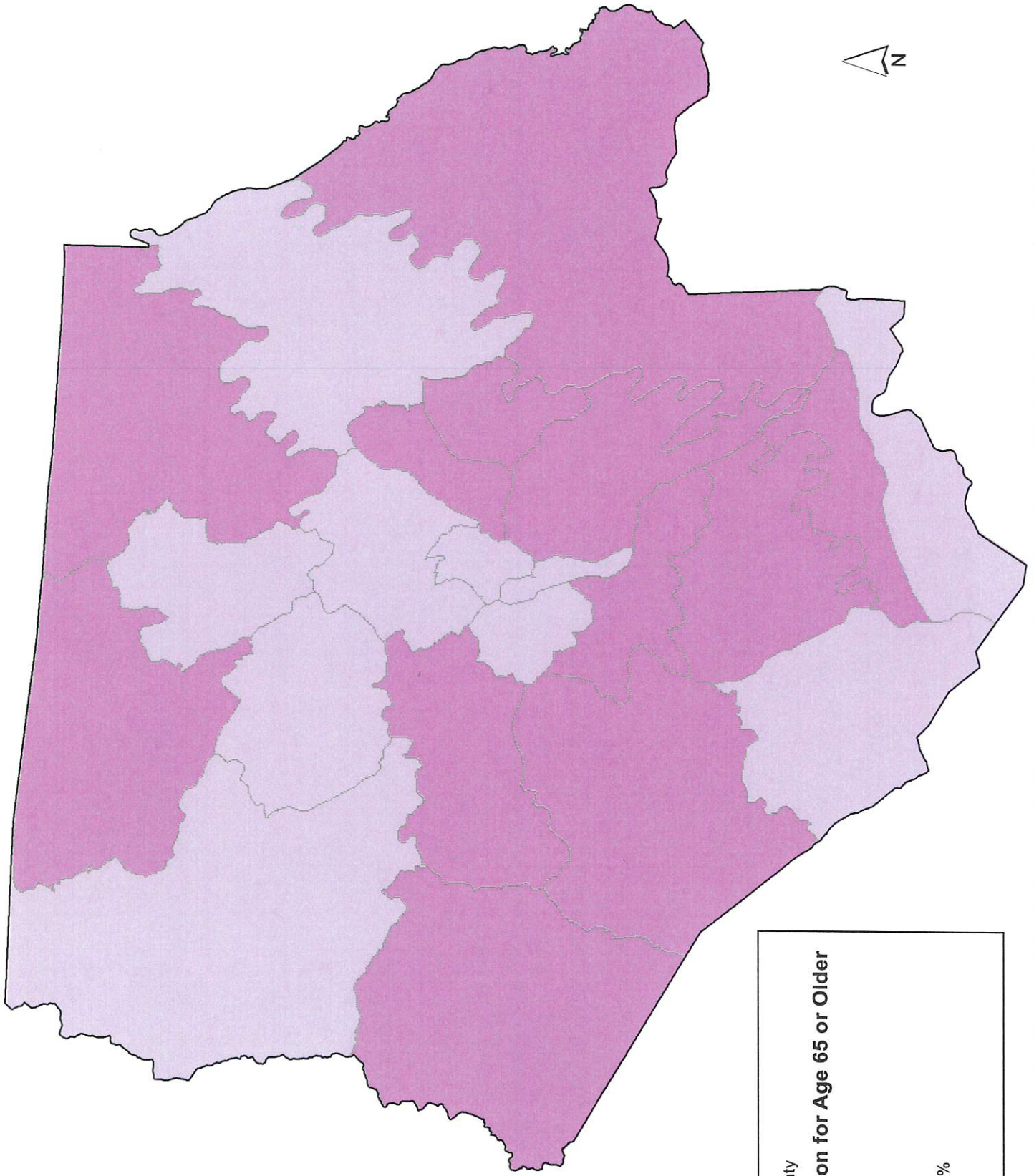
12.3% - Percentage
of Population in
Census Block Group



Title VI Map: Sheet #6
 Title VI Map Date: January 2017



Ashe County Percent of Population Age 65 or Older

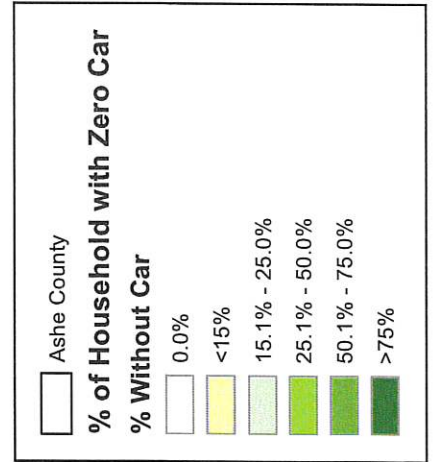
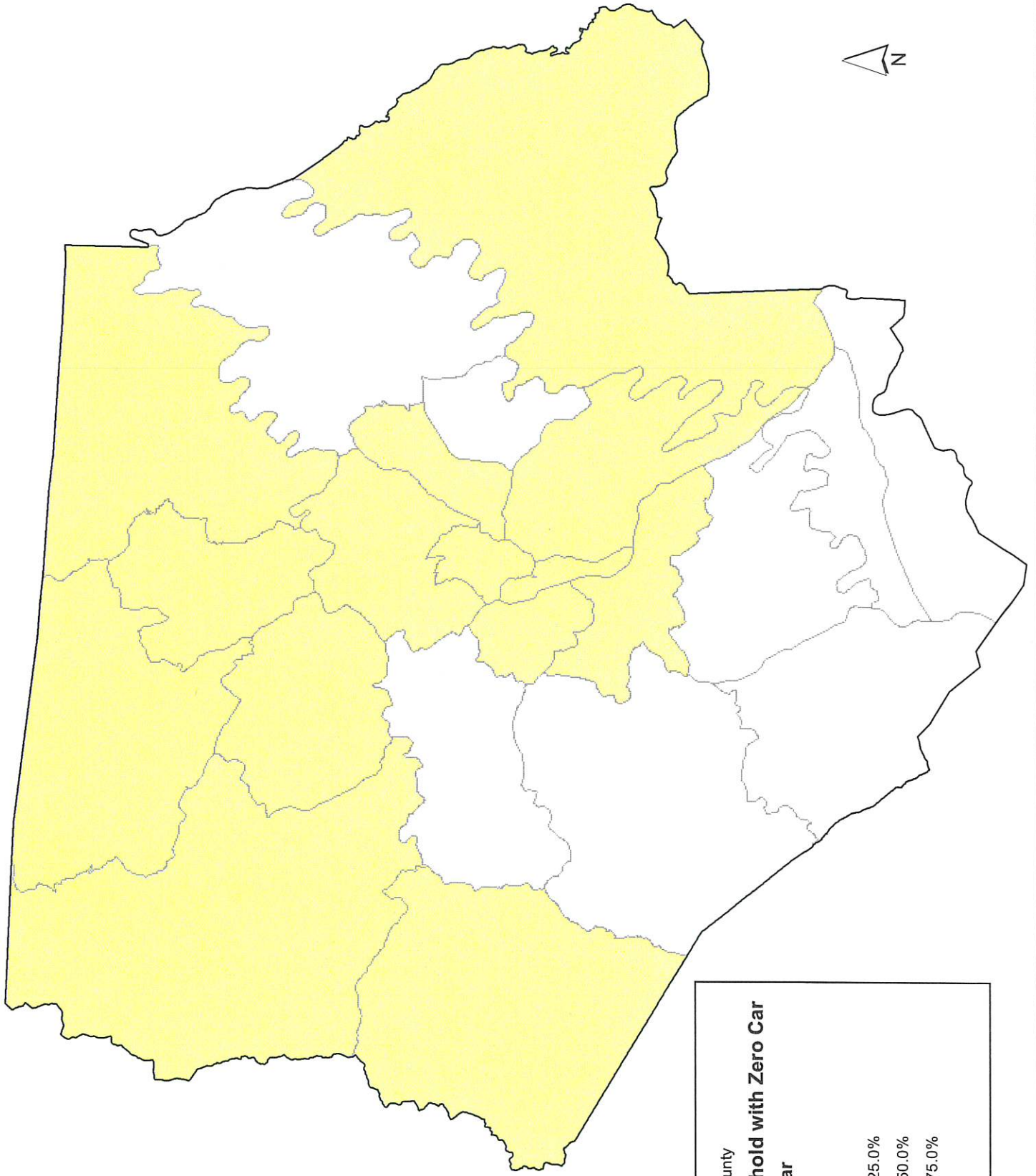


Ashe County

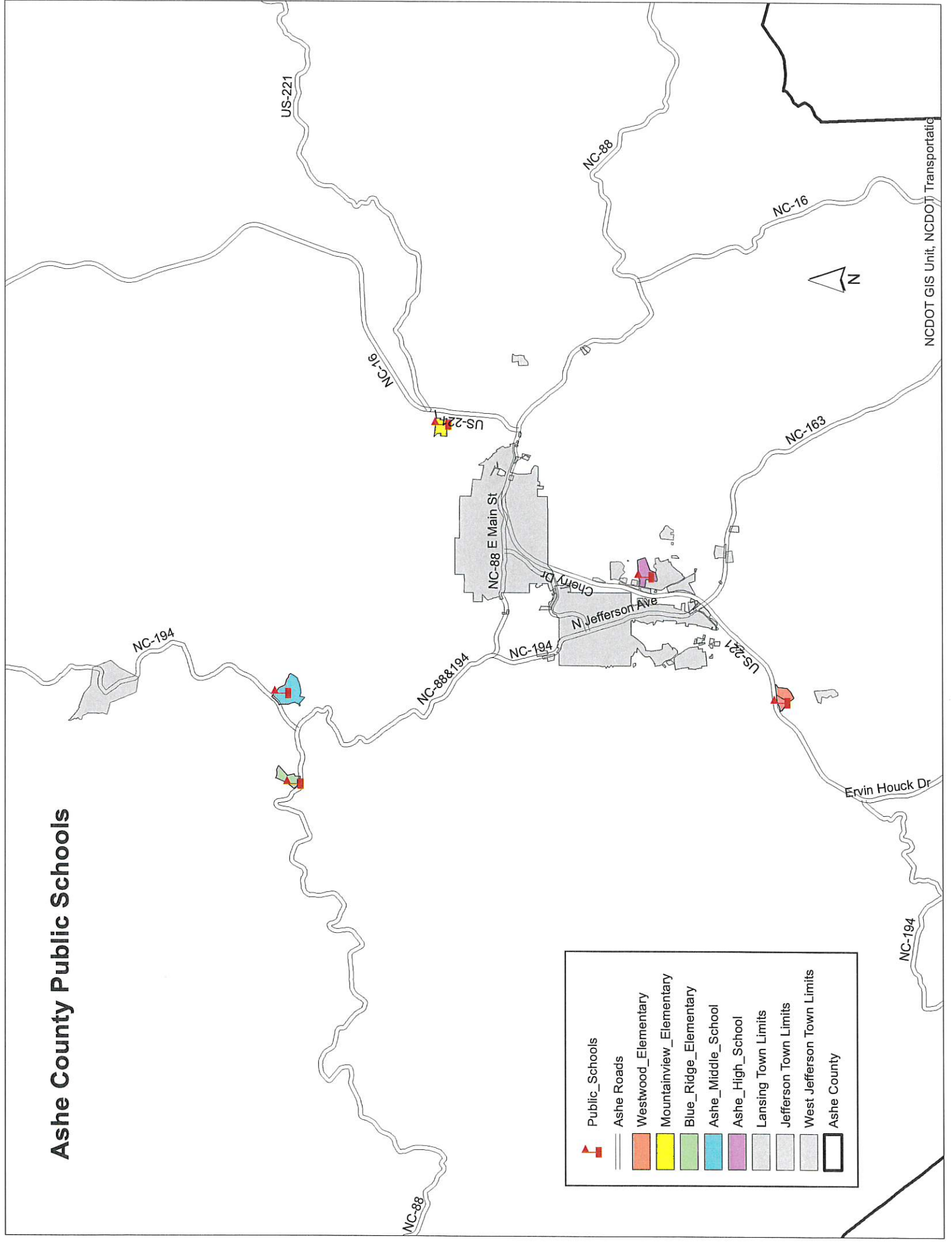
% of Population for Age 65 or Older

0%
<25%
25.1% - 50%
>50%

Ashe County Percent of Households with Zero Car



Ashe County Public Schools



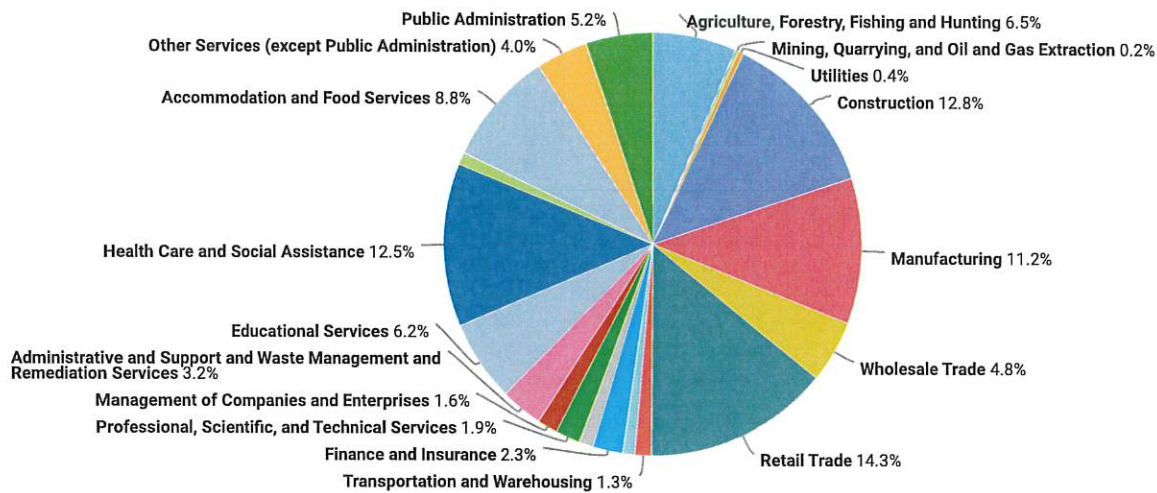
Ashe County Major Employment Centers

Area Name	Year	Month	Company Name	Industry	Class	Employment Range	Rank
Ashe County	2021	01	Ashe County Board Of Education	Educational Services	Public Sector	250-499	1
Ashe County	2021	01	American Emergency Vehicles	Manufacturing	Private Sector	250-499	2
Ashe County	2021	01	County Of Ashe	Public Administration	Public Sector	250-499	3
Ashe County	2021	01	Ashe Memorial Hospital Inc	Health Care and Social Assistance	Private Sector	250-499	4
Ashe County	2021	01	James R Vannoy & Sons Construction	Construction	Private Sector	250-499	5
Ashe County	2021	01	General Electric Company	Wholesale Trade	Private Sector	100-249	6
Ashe County	2021	01	Wal-Mart Associates Inc.	Retail Trade	Private Sector	100-249	7
Ashe County	2021	01	Ingles Markets, Inc	Retail Trade	Private Sector	100-249	8
Ashe County	2021	01	United Chemi-Con Inc	Manufacturing	Private Sector	100-249	9
Ashe County	2021	01	Skyline Telephone Membership Corp	Management of Companies and Enterprises	Private Sector	100-249	10
Ashe County	2021	01	Ashe Services For Aging Inc	Health Care and Social Assistance	Private Sector	100-249	11
Ashe County	2021	01	Lowes Home Centers Inc	Retail Trade	Private Sector	100-249	12
Ashe County	2021	01	Suncrest Health Management Inc	Health Care and Social Assistance	Private Sector	50-99	13
Ashe County	2021	01	Dr Pepper Bottling Co	Manufacturing	Private Sector	50-99	14
Ashe County	2021	01	Leviton Manufacturing Co Inc	Manufacturing	Private Sector	50-99	15
Ashe County	2021	01	Mcdonald's Restaurant 6409	Accommodation and Food Services	Private Sector	50-99	16
Ashe County	2021	01	The Hastings Co	Accommodation and Food Services	Private Sector	50-99	17
Ashe County	2021	01	Lifestore Bank	Finance and Insurance	Private Sector	50-99	18
Ashe County	2021	01	Food Lion	Retail Trade	Private Sector	50-99	19
Ashe County	2021	01	U S Postal Service	Transportation and Warehousing	Public Sector	50-99	20
Ashe County	2021	01	Forest Ridge Assisted Living	Health Care and Social Assistance	Private Sector	Below 50	21
Ashe County	2021	01	Wilkes Community College	Educational Services	Public Sector	Below 50	22
Ashe County	2021	01	Mcfarland & Co Inc	Information	Private Sector	Below 50	23
Ashe County	2021	01	Medical Services Of America Inc	Health Care and Social Assistance	Private Sector	Below 50	24
Ashe County	2021	01	Ashe Home Care Inc	Health Care and Social Assistance	Private Sector	Below 50	25

Industry Snapshot

The largest sector in Ashe County, North Carolina is Retail Trade, employing 1,222 workers. The next-largest sectors in the region are Construction (1,090 workers) and Health Care and Social Assistance (1,066). High location quotients (LQs) indicate sectors in which a region has high concentrations of employment compared to the national average. The sectors with the largest LQs in the region are Agriculture, Forestry, Fishing and Hunting (LQ = 4.62), Construction (2.15), and Retail Trade (1.37).

Total Workers for Ashe County, North Carolina by Industry



Source: JobsEQ®, Data as of 2021Q2

Employment data are derived from the Quarterly Census of Employment and Wages, provided by the Bureau of Labor Statistics and imputed where necessary. Data are updated through 2021Q1 with preliminary estimates updated to 2021Q2.

Sectors in Ashe County, North Carolina with the highest average wages per worker are Utilities (\$73,655), Management of Companies and Enterprises (\$64,235), and Finance and Insurance (\$62,014). Regional sectors with the best job growth (or most moderate job losses) over the last 10 years are Wholesale Trade (+150 jobs), Construction (+138), and Accommodation and Food Services (+116).

Over the next 10 years, employment in Ashe County, North Carolina is projected to contract by 169 jobs. The fastest growing sector in the region is expected to be Health Care and Social Assistance with a +1.1% year-over-year rate of growth. The strongest forecast by number of jobs over this period is expected for Health Care and Social Assistance (+125 jobs), Accommodation and Food Services (+16), and Administrative and Support and Waste Management and Remediation Services (+10).

Ashe County, North Carolina, 2021Q2¹

NAICS	Industry	Empl	Current		10-Year History		Total Demand	10-Year Forecast			
			Avg Ann Wages	LQ	Empl Change	Ann %		Exits	Transfers	Empl Growth	Ann % Growth
44	Retail Trade	1,222	\$27,938	1.37	82	0.7%	1,462	690	873	-101	-0.9%
23	Construction	1,090	\$47,613	2.15	138	1.4%	1,027	377	676	-27	-0.3%
62	Health Care and Social Assistance	1,066	\$37,394	0.84	-171	-1.5%	1,184	520	538	125	1.1%
31	Manufacturing	953	\$40,204	1.36	-219	-2.1%	968	362	621	-15	-0.2%
72	Accommodation and Food Services	750	\$15,395	1.15	116	1.7%	1,240	542	682	16	0.2%
11	Agriculture, Forestry, Fishing and Hunting	555	\$15,491	4.62	-116	-1.9%	517	243	328	-54	-1.0%
61	Educational Services	532	\$42,917	0.77	-177	-2.8%	452	230	248	-27	-0.5%
92	Public Administration	442	\$38,625	1.05	-18	-0.4%	393	170	231	-7	-0.2%
42	Wholesale Trade	407	\$54,078	1.26	150	4.7%	380	154	257	-31	-0.8%
81	Other Services (except Public Administration)	341	\$24,216	0.92	-16	-0.5%	376	175	209	-8	-0.2%
56	Administrative and Support and Waste Management and Remediation Services	277	\$22,588	0.51	90	4.0%	334	137	187	10	0.4%
52	Finance and Insurance	196	\$62,014	0.55	-24	-1.1%	169	67	111	-9	-0.5%
54	Professional, Scientific, and Technical Services	163	\$39,893	0.27	31	2.1%	135	51	87	-3	-0.2%
55	Management of Companies and Enterprises	133	\$64,235	1.02	-58	-3.6%	121	44	76	1	0.1%
48	Transportation and Warehousing	109	\$48,304	0.26	-33	-2.6%	94	46	62	-14	-1.4%
53	Real Estate and Rental and Leasing	92	\$34,040	0.62	7	0.8%	83	41	49	-6	-0.7%
51	Information	80	\$36,337	0.47	-28	-3.0%	49	24	43	-18	-2.6%
71	Arts, Entertainment, and Recreation	80	\$25,865	0.59	-17	-1.9%	119	52	64	4	0.4%
22	Utilities	37	\$73,655	0.82	-2	-0.6%	26	11	20	-5	-1.4%
21	Mining, Quarrying, and Oil and Gas Extraction	18	\$34,145	0.63	9	7.2%	19	6	13	0	0.0%
Total - All Industries		8,542	\$35,893	1.00	-256	-0.3%	9,032	3,931	5,270	-169	-0.2%

Source: [JobsEQ®](#)

Data as of 2021Q2

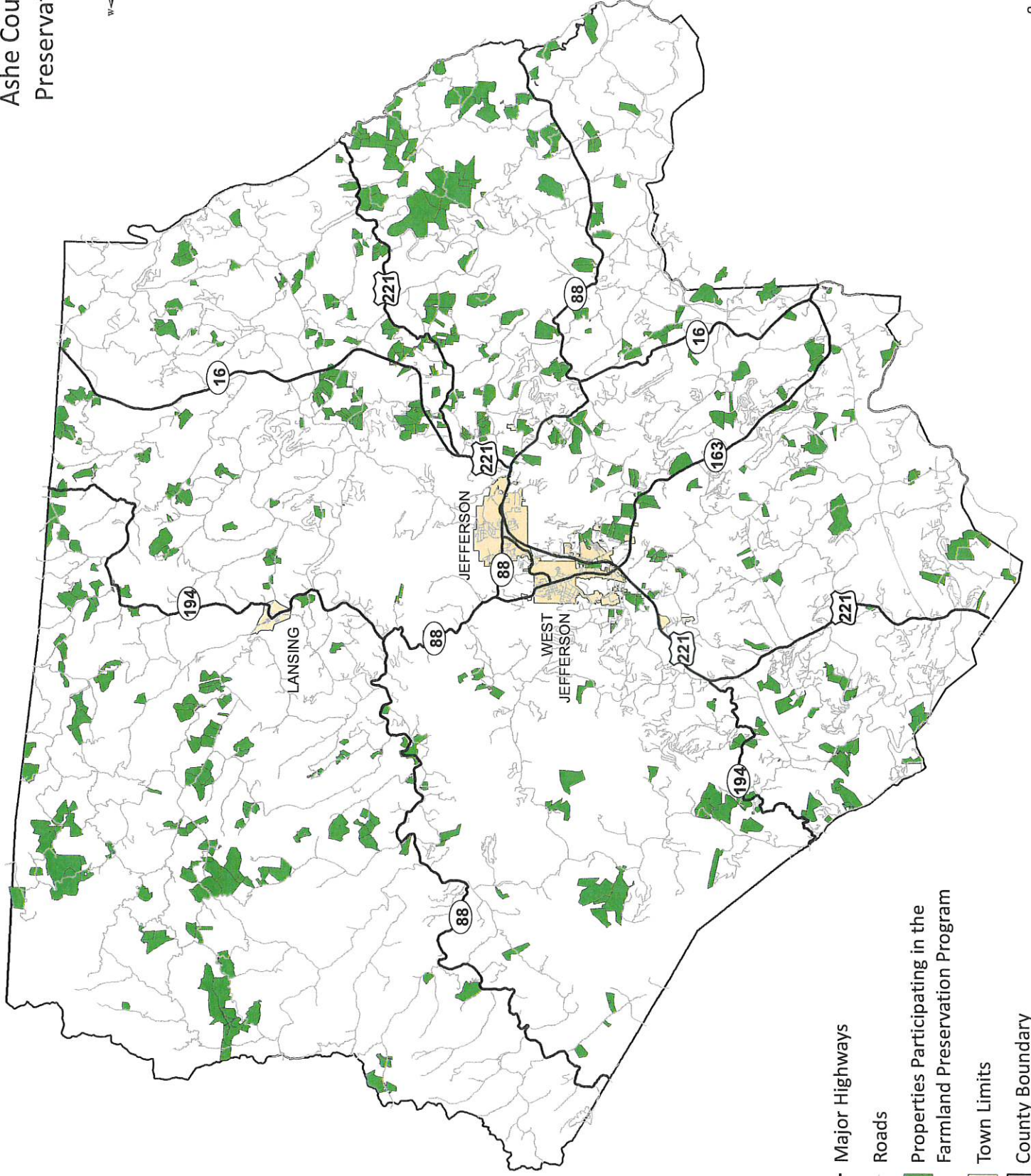
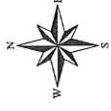
Note: Figures may not sum due to rounding.

1. All data based upon a four-quarter moving average

Exits and transfers are approximate estimates based upon occupation separation rates.

Employment data are derived from the Quarterly Census of Employment and Wages, provided by the Bureau of Labor Statistics and imputed where necessary. Data are updated through 2021Q1 with preliminary estimates updated to 2021Q2. Forecast employment growth uses national projections adapted for regional growth patterns.

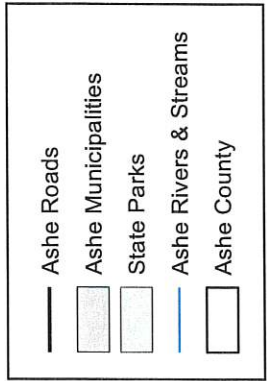
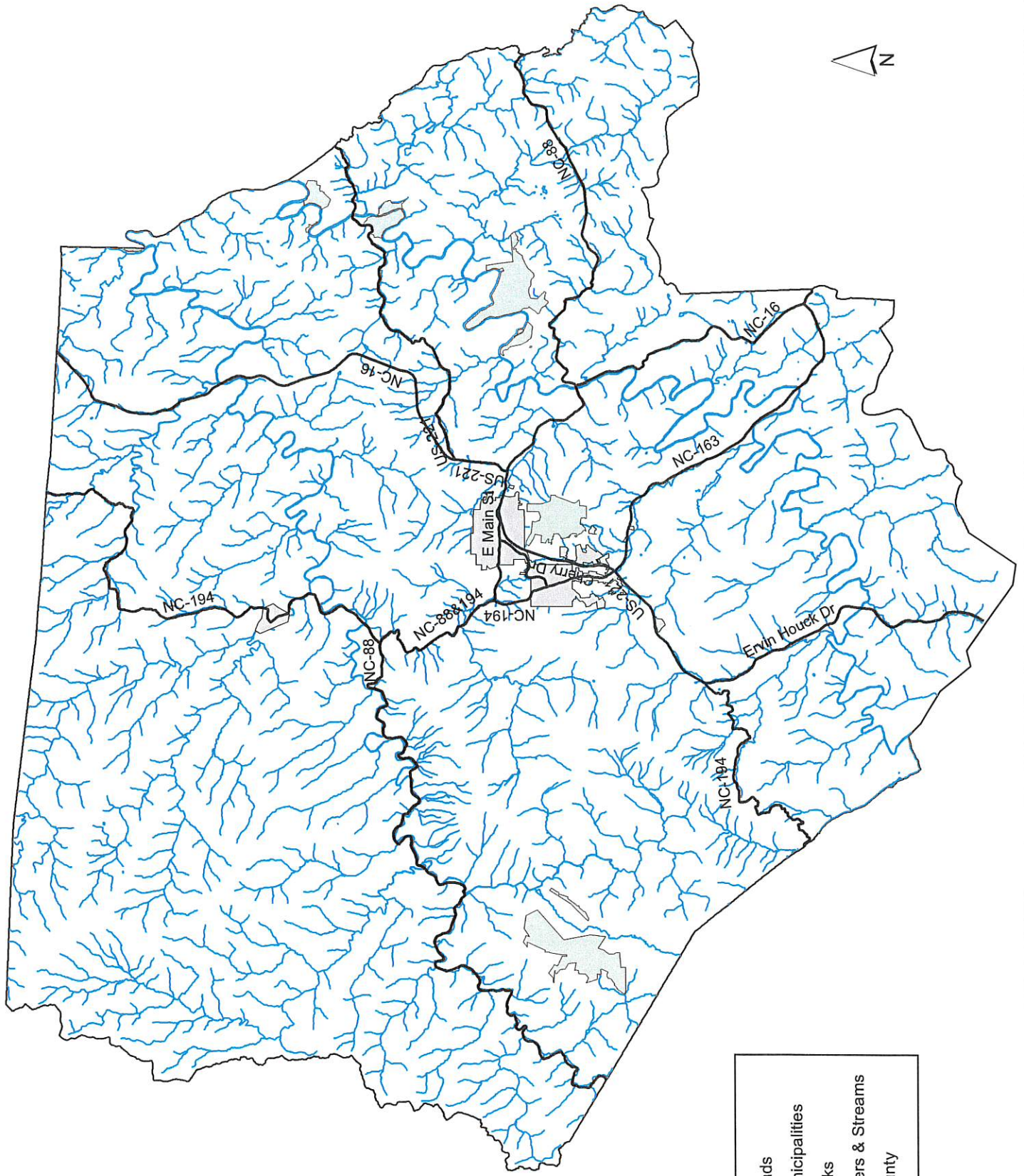
Ashe County Farmland Preservation Program



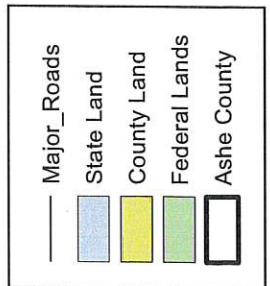
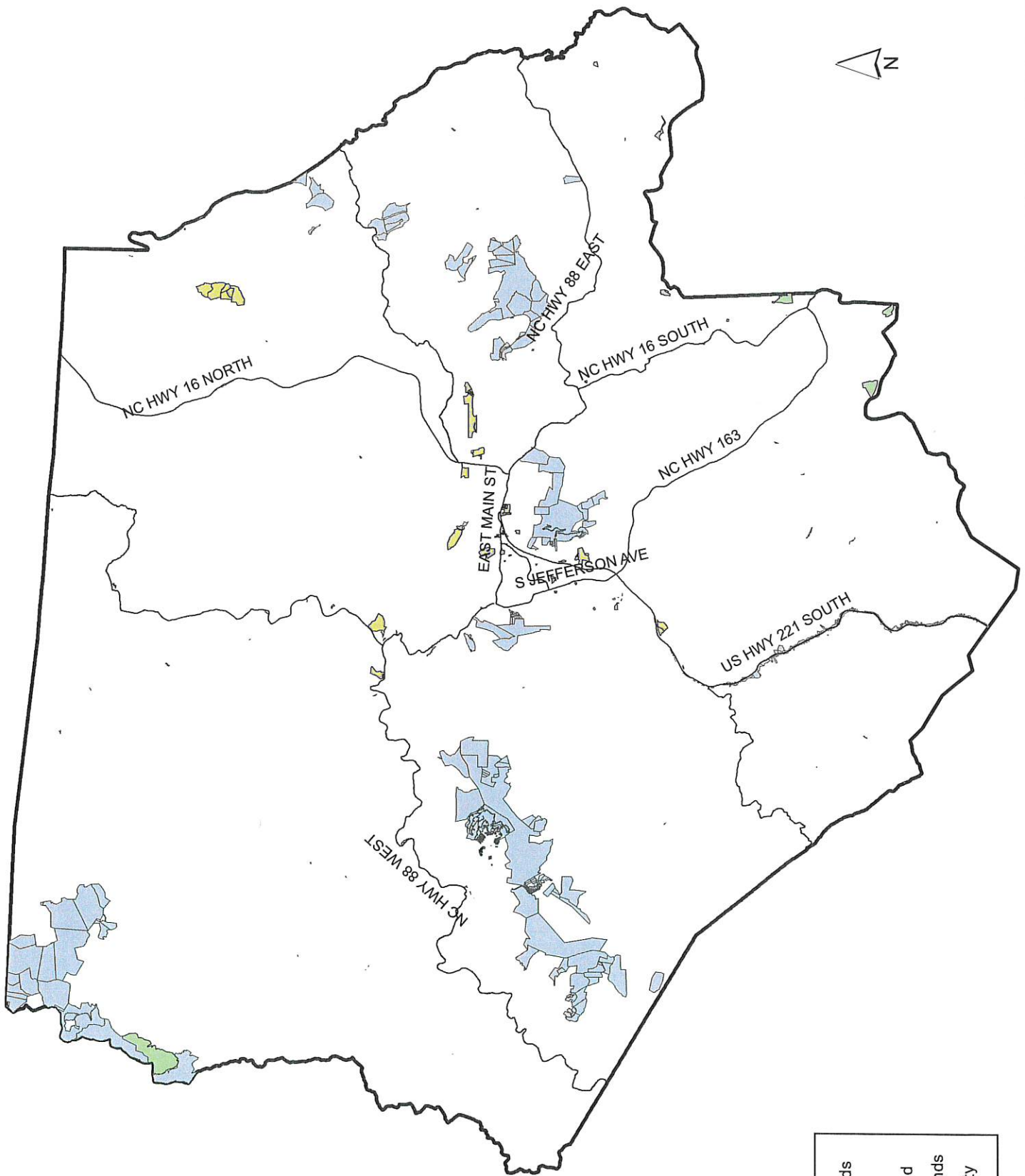
- Major Highways
- Roads
- Properties Participating in the Farmland Preservation Program
- Town Limits
- County Boundary

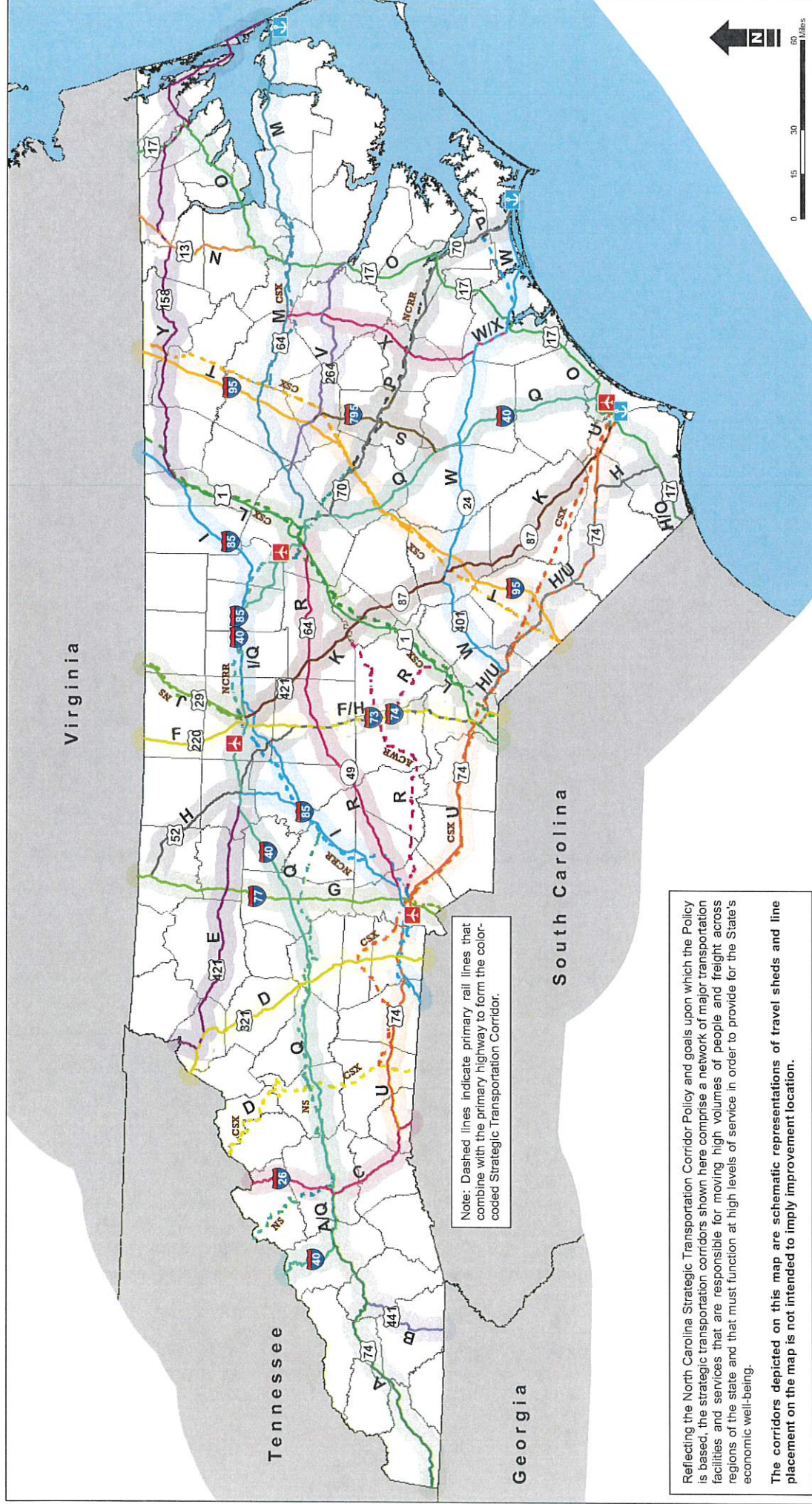


Ashe County Natural Areas



Ashe County Public Lands





Note: Dashed lines indicate primary rail lines that combine with the primary highway to form the color-coded Strategic Transportation Corridor.

Reflecting the North Carolina Strategic Transportation Corridor Policy and goals upon which the Policy is based, the strategic transportation corridors shown here comprise a network of major transportation facilities and services that are responsible for moving high volumes of people and freight across regions of the state and that must function at high levels of service in order to provide for the State's economic well-being.

The corridors depicted on this map are schematic representations of travel sheds and line placement on the map is not intended to imply improvement location.

NORTH CAROLINA TRANSPORTATION NETWORK
MARCH 2015
Sources: NCDOT, GIS, ESRI

NORTH CAROLINA STRATEGIC TRANSPORTATION CORRIDORS NETWORK

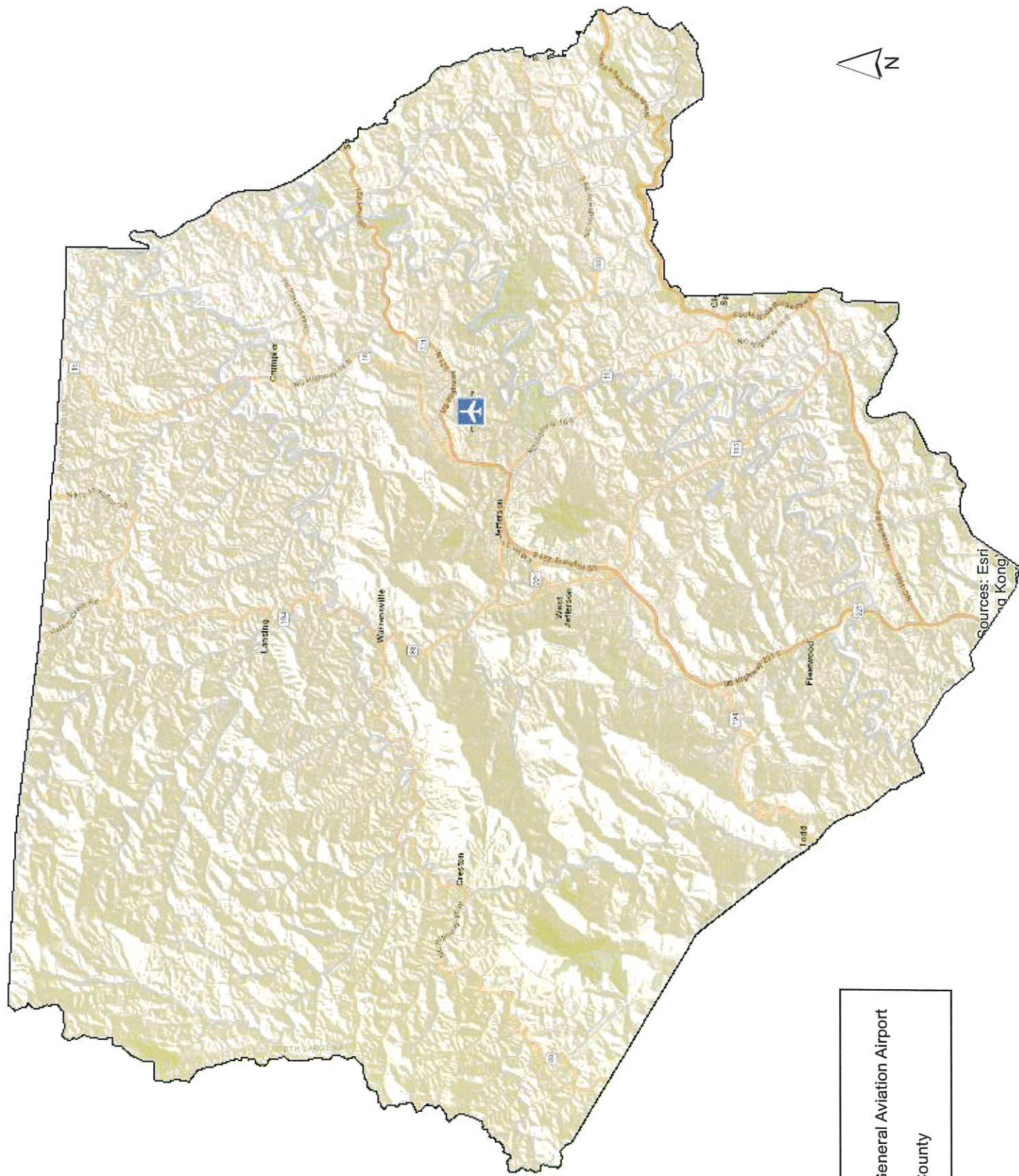
NC Seaports
NC Int'l or Major Freight Airports


Strategic Transportation Corridors (solid = highway; dashed = rail)


A (US74W)	F (I73/Future I73)	K (US421/NC87)	P (US70E/NCRR)	U (US74W/US74E)
B (US441)	G (I77)	L (US1)	Q (I40)	V (US264E)
C (I26/US23)	H (I74/Future I74)	M (I495/US64E)	R (US64W/NC49)	W (US401/NC24/US258)
D (US321/CSX)	I (I85)	N (US13)	S (I795/US117)	X (US258/NC11/US13)
E (US421W)	J (US29N/NS)	O (US17)	T (I95/CSX)	Y (US158)



Ashe County Airport



 Ashe General Aviation Airport

 Ashe County

Sources: Esri, DeLorme, Garmin, Bing, Google, Mapbox, OpenStreetMap contributors, Swatch, Esri, DeLorme, Garmin, Bing, Google, Mapbox, OpenStreetMap contributors, Swatch, Esri, DeLorme, Garmin, Bing, Google, Mapbox, OpenStreetMap contributors, Swatch