

Rural Areas of Buncombe County

Comprehensive Transportation Plan

Plan date: October 12, 2007

Sheet 1 **Adoption Sheet**





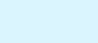


Sheet 2 **Highway Map**

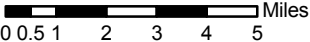
Sheet 3 **Public Transportation and Rail Map**

Sheet 4 **Bicycle Map**

Sheet 5 **Pedestrian Map**

Legend

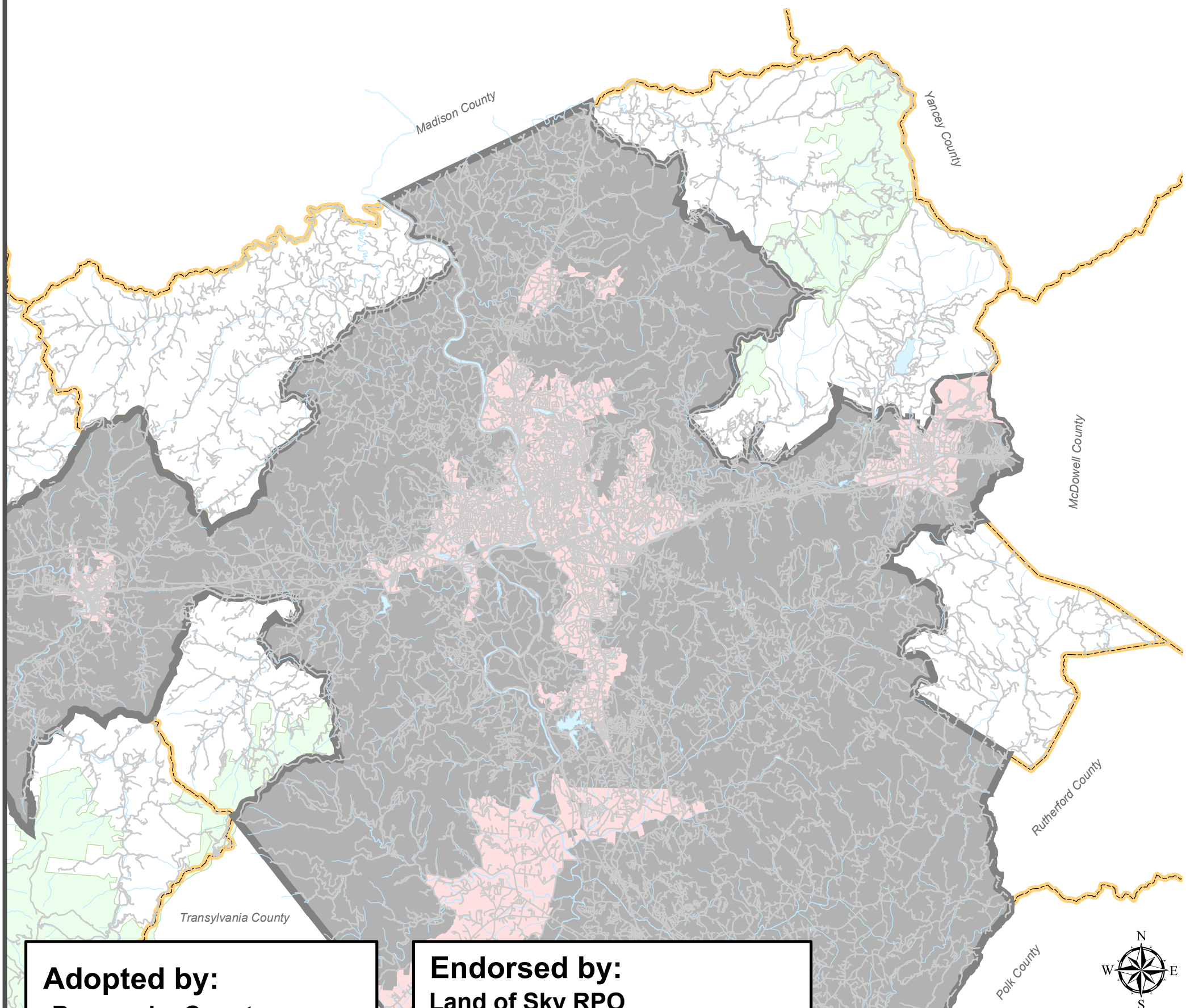
-  Railroads
-  Roads
-  Rivers & Streams
-  FBRMPO Boundary
-  Water Bodies
-  County Boundary
-  Forest and Parks

 Miles
0 0.5 1 2 3 4 5

Sheet 1 of 5

Base map date: October 15, 2004

Refer to CTP document for more details



Adopted by:
Buncombe County
Date: October 16, 2007

NCDOT
Date: January 10, 2008

Endorsed by:
Land of Sky RPO
Date: October 19, 2007

Recommended by
Transportation Planning Branch
Date: December 14, 2007

NOTES:
 No public transportation or rail facilities are existing or planned.
 Format for Sheet 5 Pedestrian Map is pending.

