

Bicycle Map



Carteret County

Comprehensive Transportation Plan

Plan date: May 30, 2012

On-road

- Existing
- Needs Improvement
- Recommended

Off-road

- Existing
- Needs Improvement
- Recommended

Multi-Use Paths

- Existing
- Needs Improvement
- Recommended

- County Boundary
- Municipal Boundary

- Railroads
- Airports
- Hospitals/Medical Centers
- Schools
- Ferry



Figure 1 (Sheet 4 of 5)
Base map date: November 30, 2011
Refer to CTP document for more details

Bicycle Map (Inset 1)



Beaufort Carteret County

Comprehensive Transportation Plan

Plan date: May 30, 2012

On-road

- Existing
- Needs Improvement
- Recommended

Off-road

- Existing
- Needs Improvement
- Recommended

Multi-Use Paths

- Existing
- Needs Improvement
- Recommended

- County Boundary
- Municipal Boundary

- Railroads
- Airports
- Hospitals/Medical Centers
- Schools

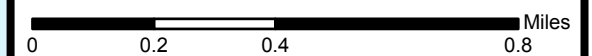
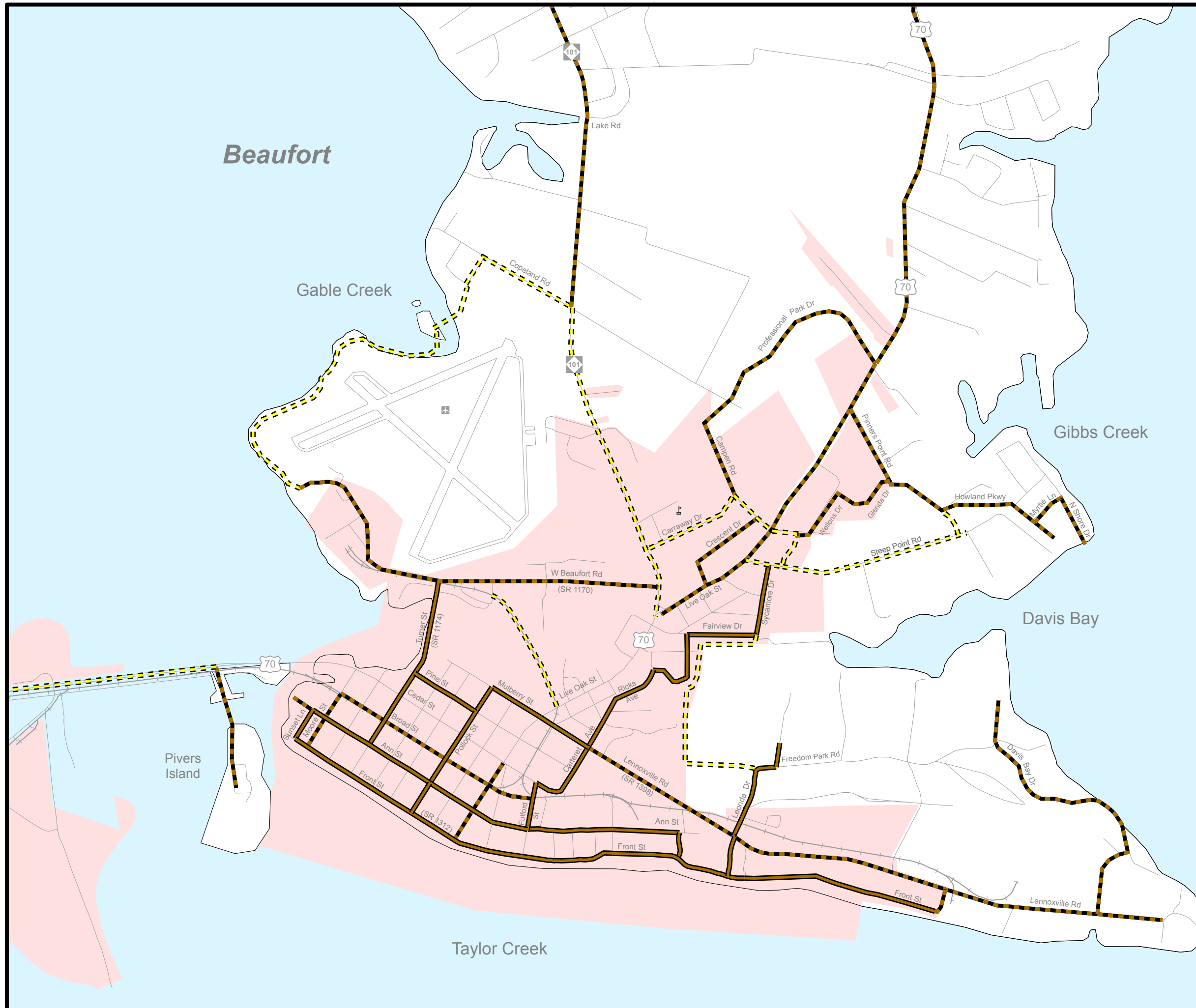
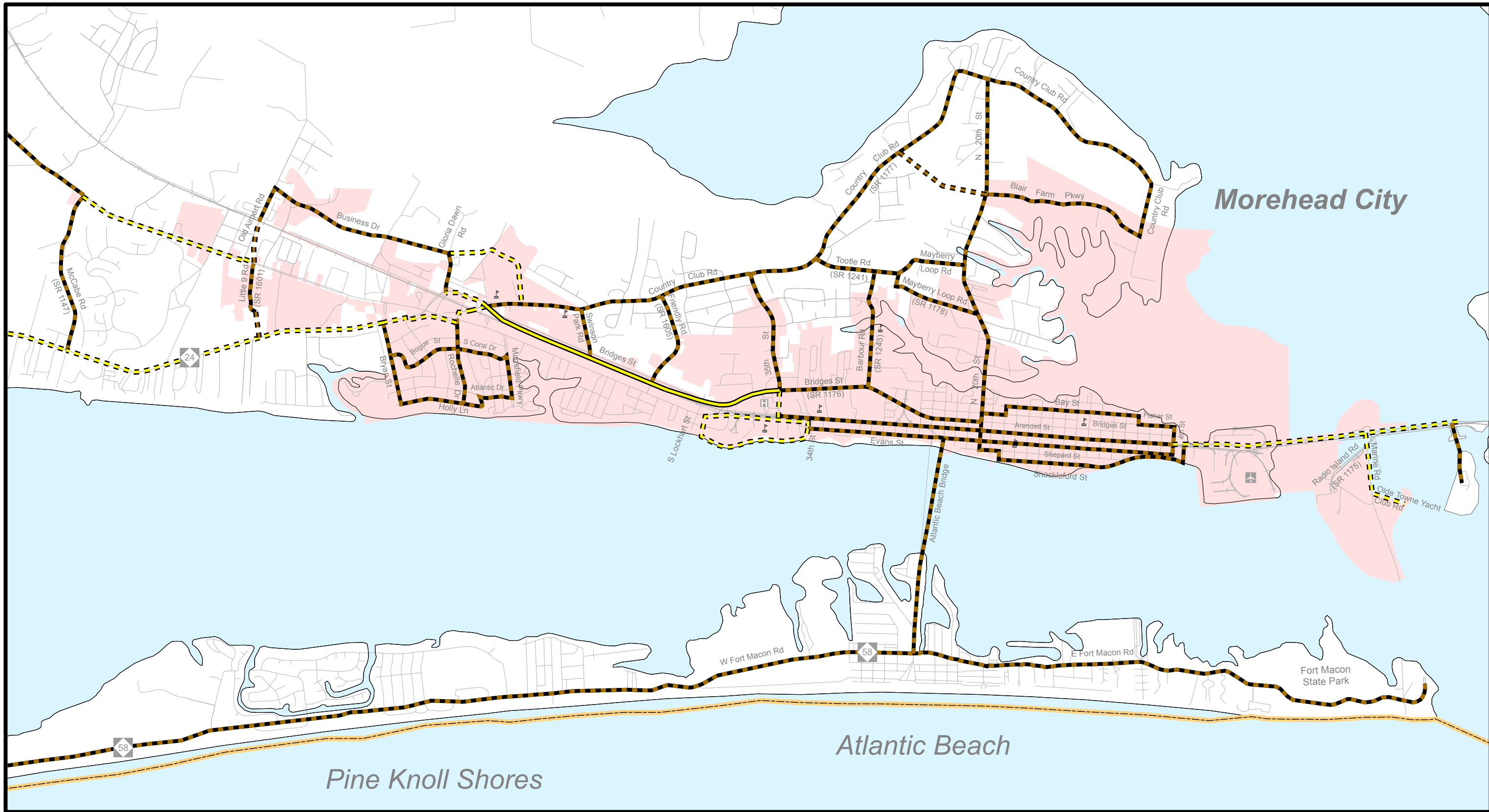


Figure 1 (Sheet 4A of 5)

Base map date: November 30, 2011

Refer to CTP document for more details





On Road	Off Road	Multi-Use Paths
Existing	Existing	Existing
Needs Improvement	Needs Improvement	Needs Improvement
Recommended	Recommended	Recommended
Railroads	County Boundary	Hospitals/Medical Centers
Airports	Municipal Boundary	Schools

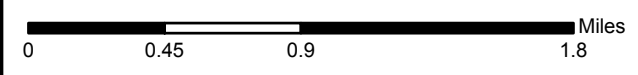


Figure 1 (Sheet 4B of 5)
 Base map date: November 30, 2011
 Refer to CTP document for more details

Bicycle Map (Inset 2)
Morehead City
Carteret County
Comprehensive
Transportation Plan
 Plan date: May 30, 2012

Bicycle Map (Inset 3)



Newport Carteret County

Comprehensive Transportation Plan

Plan date: May 30, 2012

On-road

- Existing
- Needs Improvement
- Recommended

Off-road

- Existing
- Needs Improvement
- Recommended

Multi-Use Paths

- Existing
- Needs Improvement
- Recommended

- County Boundary
- Municipal Boundary

- Railroads
- Airports
- Hospitals/Medical Centers
- Schools

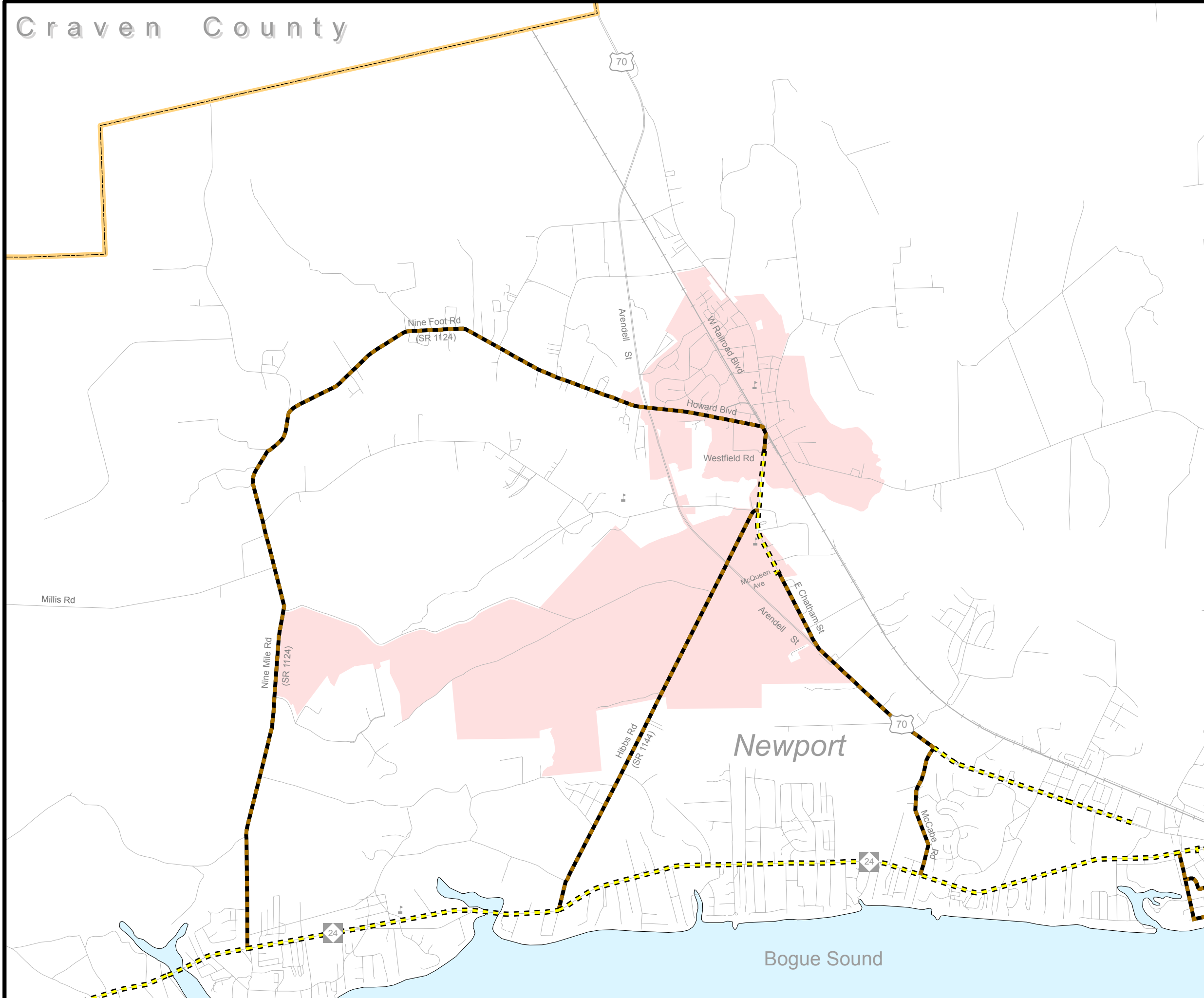
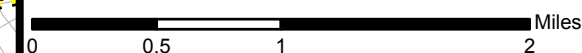


Figure 1 (Sheet 4C of 5)
Base map date: November 30, 2011
Refer to CTP document for more details



On Road

- Existing
- Needs Improvement
- Recommended

Off Road

- Existing
- Needs Improvement
- Recommended
- Crosswalk

Multi-Use Paths

- Existing
- Needs Improvement
- Recommended

- Railroads
- Airports

- County Boundary
- Municipal Boundary

- Hospitals/Medical Centers
- Schools

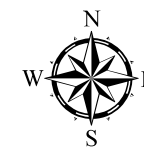
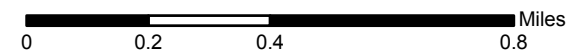


Figure 1 (Sheet 4AA of 5)
 Base map date: November 30, 2011
 Refer to CTP document for more details

**Bicycle Map (Inset 4A)
 Emerald Isle
 Carteret County**

**Comprehensive
 Transportation Plan**
 Plan date: May 30, 2012



On Road

- Existing
- Needs Improvement
- Recommended

Off Road

- Existing
- Needs Improvement
- Recommended

Multi-Use Paths

- Existing
- Needs Improvement
- Recommended

- Railroads
- Airports

- County Boundary
- Municipal Boundary

- Hospitals/Medical Centers
- Schools

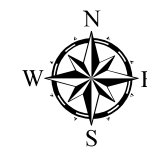
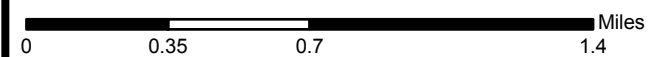


Figure 1 (Sheet 4AB of 5)
 Base map date: November 30, 2011
 Refer to CTP document for more details

**Bicycle Map (Inset 4B)
 Emerald Isle
 Carteret County**

**Comprehensive
 Transportation Plan**

Plan date: May 30, 2012