

# Highway Map

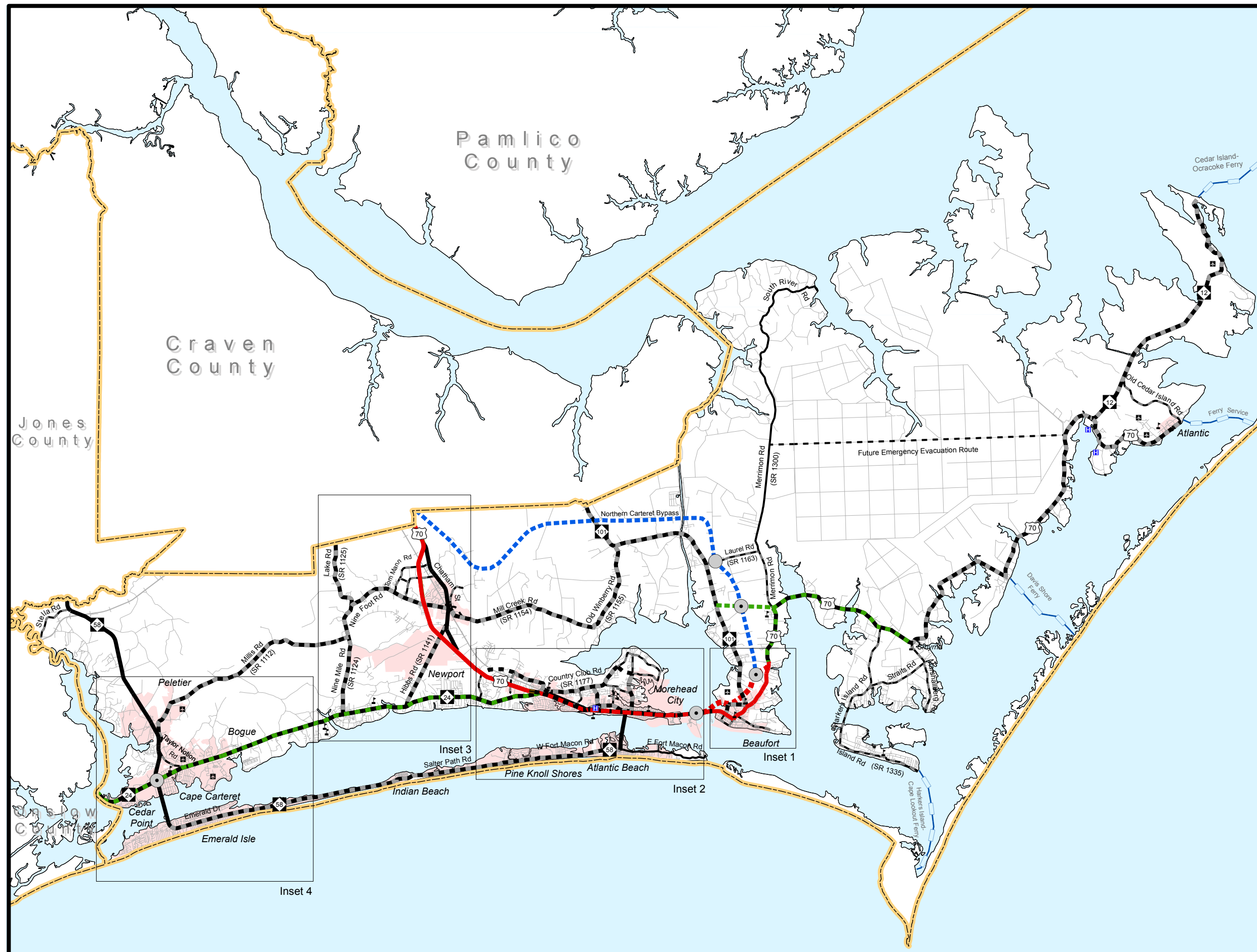


## Carteret County

### Comprehensive Transportation Plan

Plan Date: May 30, 2012  
Revised: August 1, 2013

- Freeways**
  - Existing
  - Needs Improvement
  - Recommended
- Expressways**
  - Existing
  - Needs Improvement
  - Recommended
- Boulevards**
  - Existing
  - Needs Improvement
  - Recommended
- Other Major Thoroughfares**
  - Existing
  - Needs Improvement
  - Recommended
- Minor Thoroughfares**
  - Existing
  - Needs Improvement
  - Recommended
- County Boundaries
- Municipal Boundaries
- Railroads
- Airports
- Hospitals/Medical Centers
- Schools
- Ferry
- Existing Interchange
- Proposed Interchange
- Existing Grade Separation
- Proposed Grade Separation



Atlantic Ocean

Figure 1 - Sheet 2 of 5

Base map date: November 30, 2011

Refer to CTP document for more details

# Highway Map (Inset 1)



## Beaufort Carteret County

### Comprehensive Transportation Plan

Plan date: May 30, 2012

#### Freeways

- Existing
- Needs Improvement
- Recommended

#### Expressways

- Existing
- Needs Improvement
- Recommended

#### Boulevards

- Existing
- Needs Improvement
- Recommended

#### Other Major Thoroughfares

- Existing
- Needs Improvement
- Recommended

#### Minor Thoroughfares

- Existing
- Needs Improvement
- Recommended

Municipal Boundary

Railroads

Airports

Schools

Existing Interchange

Proposed Interchange

Existing Grade Separation

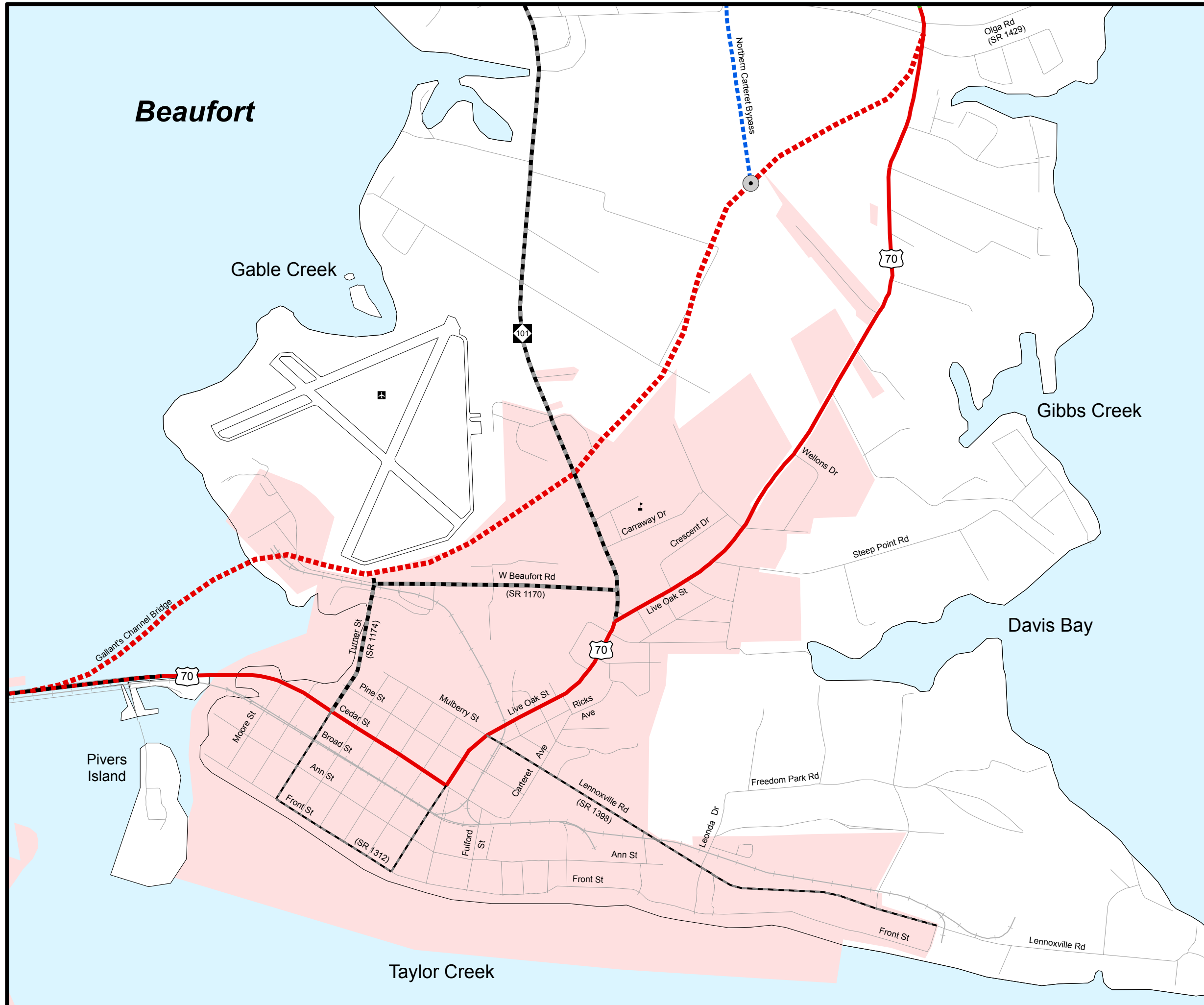
Proposed Grade Separation

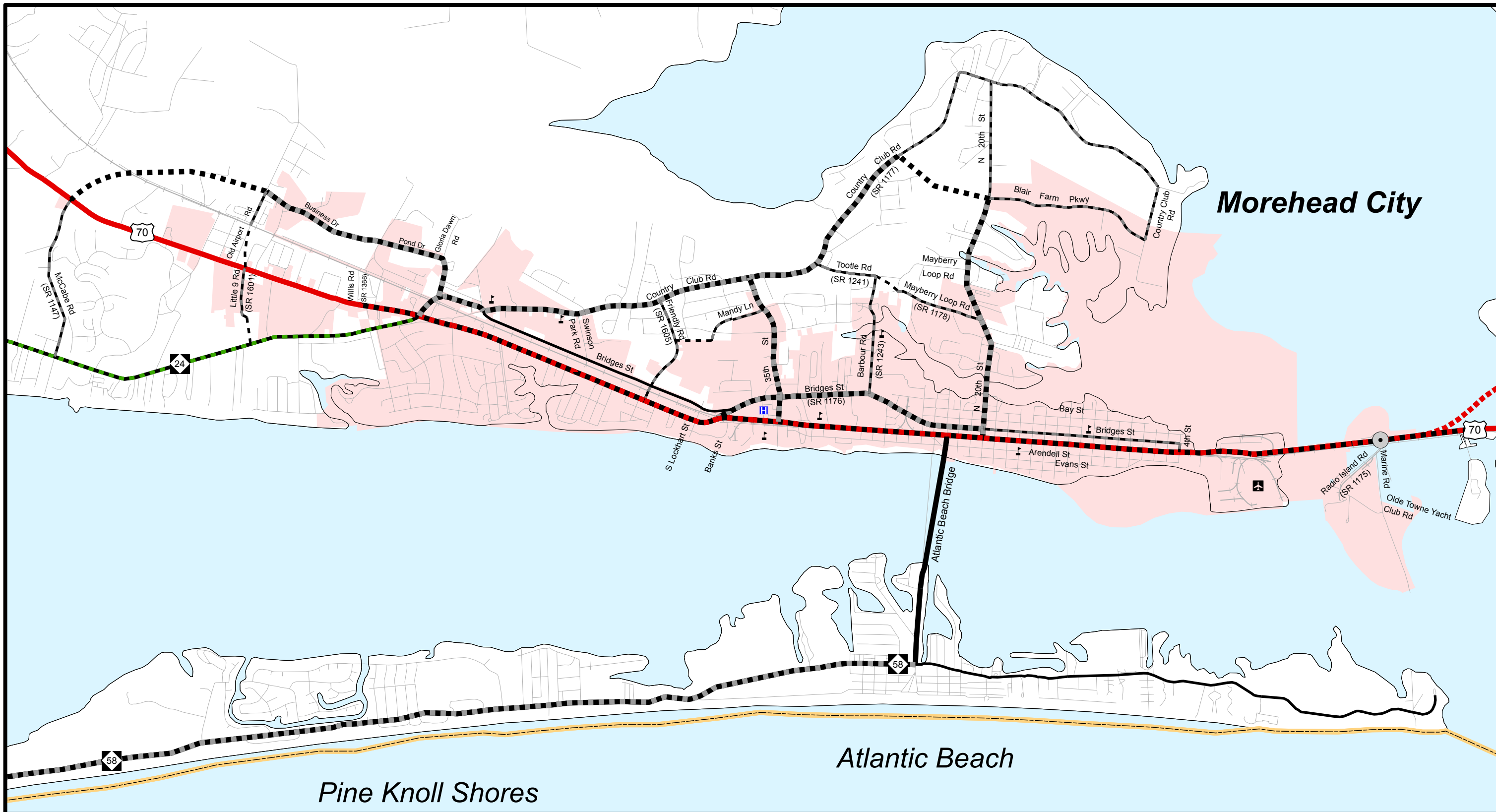


Figure 1 (Sheet 2A of 5)

Base map date: November 30, 2011

Refer to CTP document for more details





<b>Freeways</b> Existing Needs Improvement Recommended	<b>Boulevards</b> Existing Needs Improvement Recommended	<b>Minor Thoroughfares</b> Existing Needs Improvement Recommended	County Boundary Municipal Boundary Railroads Airports Hospitals Schools
<b>Expressways</b> Existing Needs Improvement Recommended	<b>Other Major Thoroughfares</b> Existing Needs Improvement Recommended	Existing Interchange Proposed Interchange Existing Grade Separation Proposed Grade Separation	

0 0.25 0.5 1 1.5 Miles

Figure 1 (Sheet 2B of 5)

Base map date: November 30, 2011  
Refer to CTP document for more details

**Highway Map (Inset 2)**  
**Morehead City**  
**Carteret County**

**Comprehensive**  
**Transportation Plan**

Plan date: May 30, 2012 ; Revised: August 1, 2013



# Newport-Carteret County

## Comprehensive Transportation Plan

Plan date: May 30, 2012

### Freeways

- Existing: Solid blue line
- Needs Improvement: Blue line with yellow dashes
- Recommended: Dotted blue line

### Expressways

- Existing: Solid green line
- Needs Improvement: Green line with black dashes
- Recommended: Dotted green line

### Boulevards

- Existing: Solid red line
- Needs Improvement: Red line with black dashes
- Recommended: Dotted red line

### Other Major Thoroughfares

- Existing: Solid black line
- Needs Improvement: Black line with grey dashes
- Recommended: Dotted black line

### Minor Thoroughfares

- Existing: Solid grey line
- Needs Improvement: Grey line with black dashes
- Recommended: Dotted grey line

- County Boundary: Yellow dashed line
- Municipal Boundary: Light pink shaded area

- Airports: Square with airplane icon
- Schools: Square with school icon

- Existing Interchange: Circle with black outline
- Proposed Interchange: Circle with grey outline
- Existing Grade Separation: Circle with black outline
- Proposed Grade Separation: Circle with grey outline

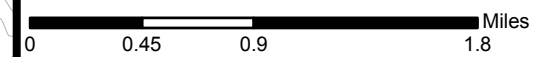
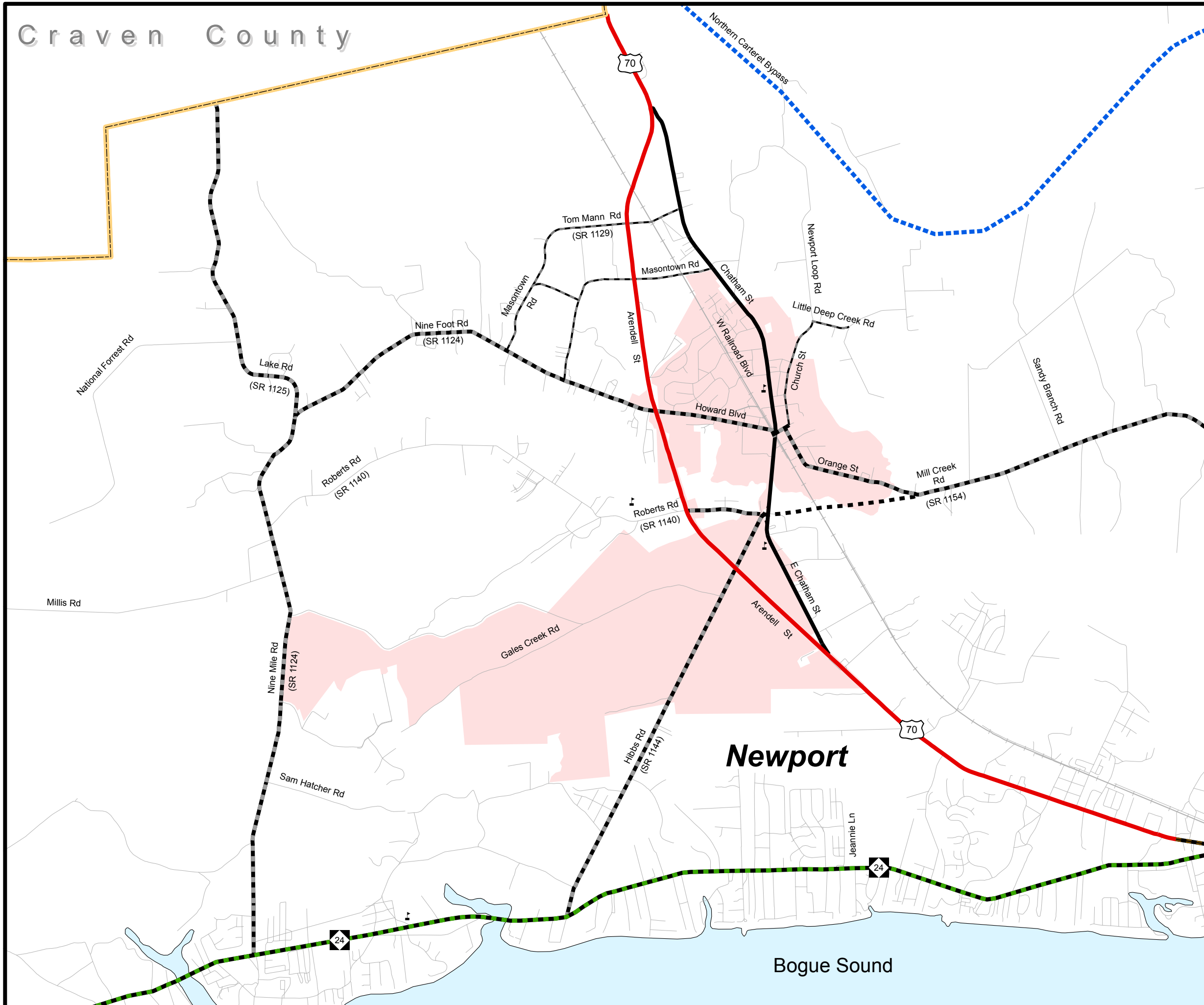


Figure 1 (Sheet 2C of 5)

Base map date: November 30, 2011

Refer to CTP document for more details



# Highway Map (Inset 4)



## Bogue, Cape Carteret, Cedar Point, Emerald Isle, Peletier Carteret County

### Comprehensive Transportation Plan

Plan date: May 30, 2012

#### Freeways

- Existing
- Needs Improvement
- Recommended

#### Expressways

- Existing
- Needs Improvement
- Recommended

#### Boulevards

- Existing
- Needs Improvement
- Recommended

#### Other Major Thoroughfares

- Existing
- Needs Improvement
- Recommended

#### Minor Thoroughfares

- Existing
- Needs Improvement
- Recommended

County Boundary

Municipal Boundary

- Airports
- Schools

- Existing Interchange
- Proposed Interchange
- Existing Grade Separation
- Proposed Grade Separation

0 0.45 0.9 1.8 Miles



Figure 1 (Sheet 2D of 5)

Base map date: November 30, 2011

Refer to CTP document for more details

