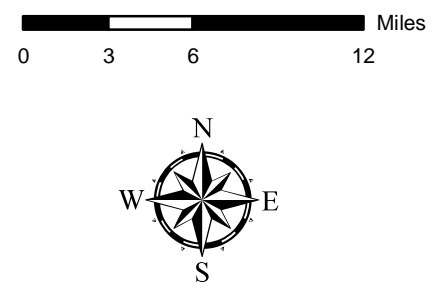


- | | |
|---|------------------------|
| Sidewalks | Multi-Use Paths |
| Existing | Existing |
| Needs Improvement | Needs Improvement |
| Recommended | Recommended |
| Grade Separations | Interchanges |
| Existing | Existing |
| Needs Improvement | Needs Improvement |
| Recommended | Recommended |
| Interchanges with Managed Lanes Access | |
| Existing | |
| Needs Improvement | |
| Recommended | |



Sheet 5 of 5

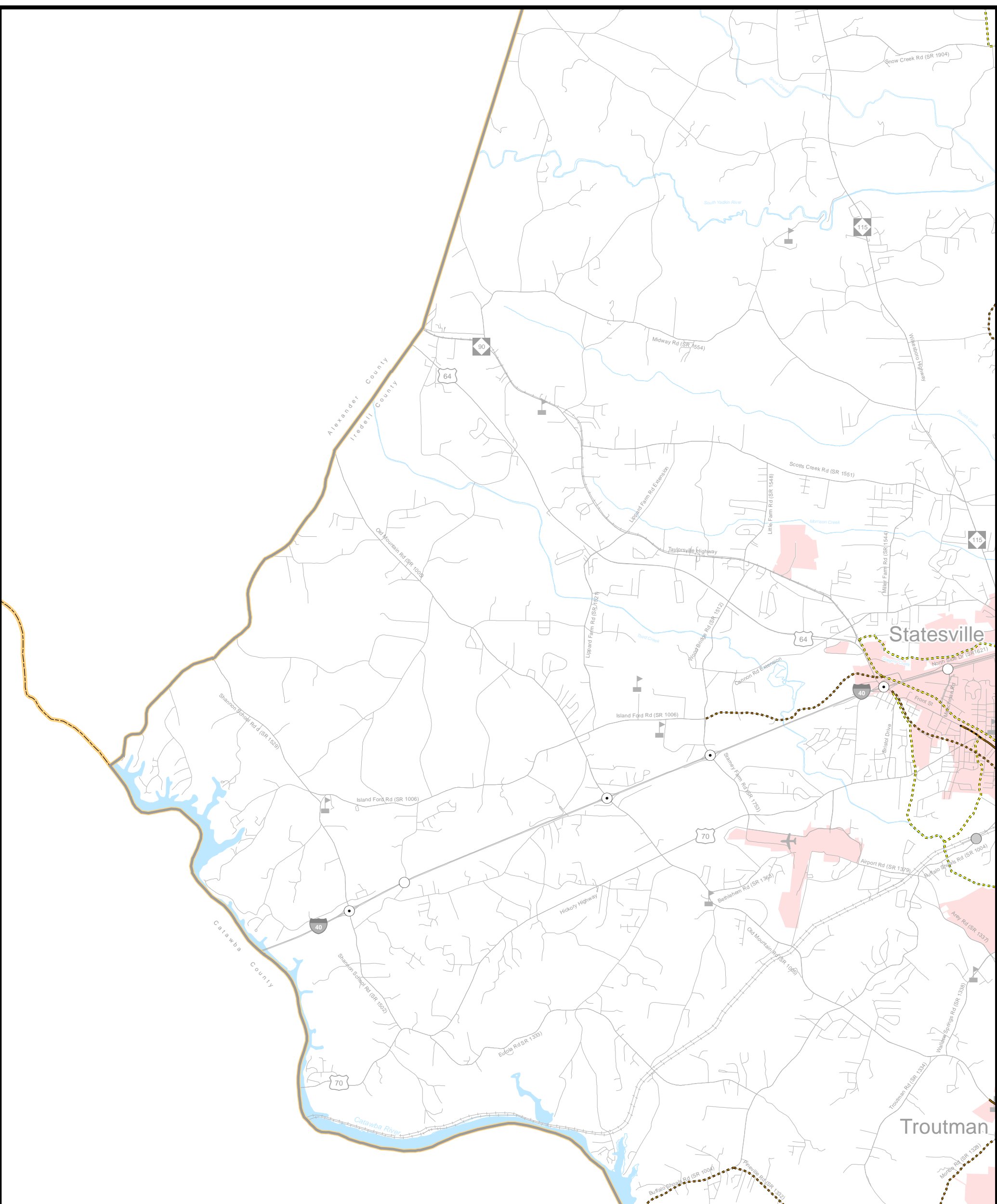
Base map date: January 4, 2017
 Refer to CTP document for more details

Pedestrian Map



AMENDED
Charlotte Regional Transportation Planning Organization
 North Carolina

Comprehensive Transportation Plan
 Plan date: January 18, 2017
 Revision date: October 17, 2018



- | | |
|---|------------------------|
| Sidewalks | Multi-Use Paths |
| Existing | Existing |
| Needs Improvement | Needs Improvement |
| Recommended | Recommended |
| Grade Separations | Interchanges |
| Existing | Existing |
| Needs Improvement | Needs Improvement |
| Recommended | Recommended |
| Interchanges with Managed Lanes Access | |
| Existing | |
| Needs Improvement | |
| Recommended | |



Sheet 5A of 5

Base map date: January 4, 2017

Refer to CTP document for more details

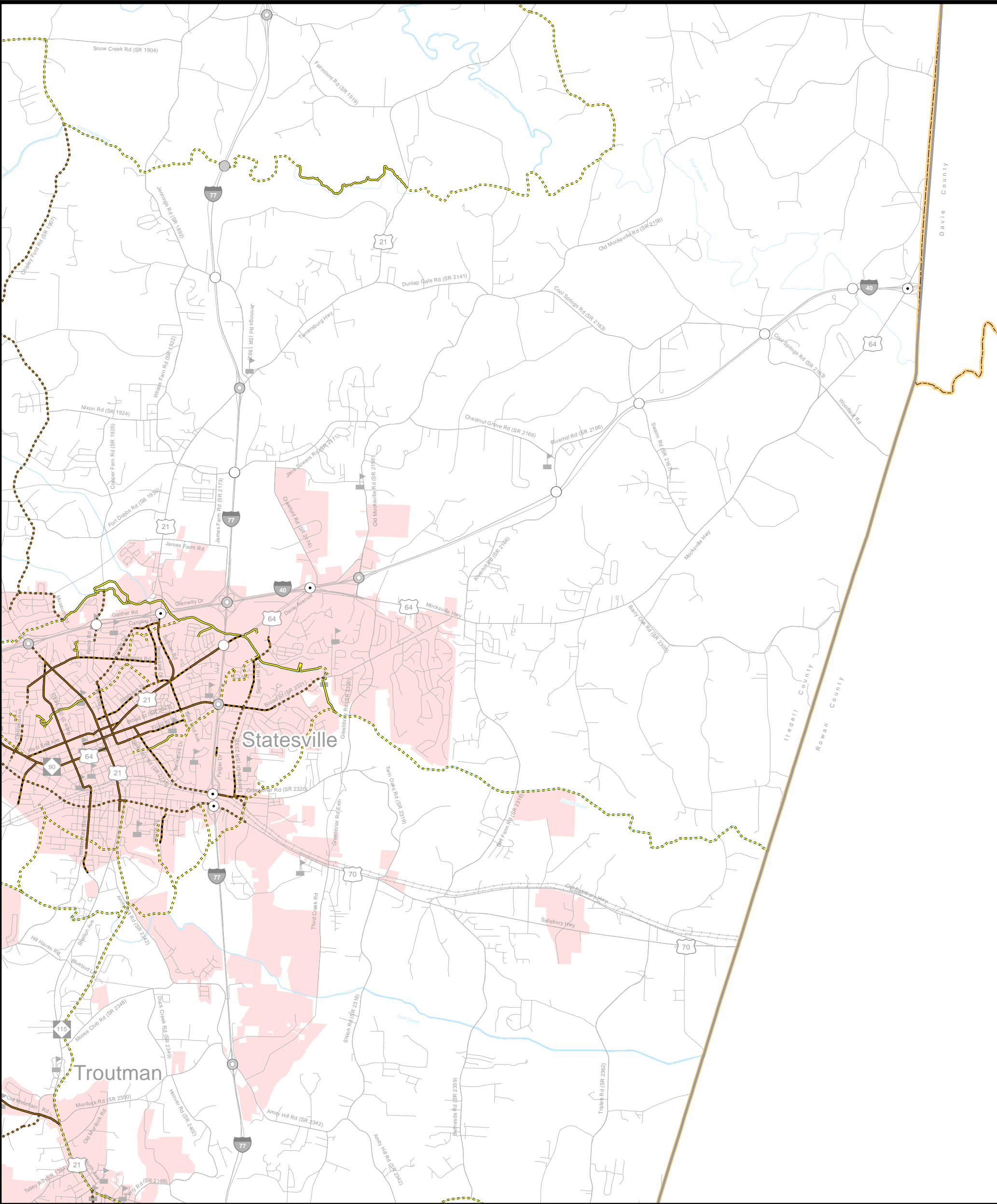
Pedestrian Map

Inset A



AMENDED
Charlotte Regional Transportation
Planning Organization
North Carolina

**Comprehensive
Transportation Plan**
Plan date: January 18, 2017
Revision date: October 17, 2018



Sidewalks

- Existing
- Needs Improvement
- Recommended

Multi-Use Paths

- Existing
- Needs Improvement
- Recommended

Grade Separations

- Existing
- Needs Improvement
- Recommended

Interchanges

- Existing
- Needs Improvement
- Recommended

Interchanges with Managed Lanes Access

- Existing
- Needs Improvement
- Recommended



Sheet 5B of 5

Base map date: January 4, 2017

Refer to CTP document for more details

Pedestrian Map

Inset B



charlotte regional transportation planning organization

AMENDED

Charlotte Regional Transportation Planning Organization

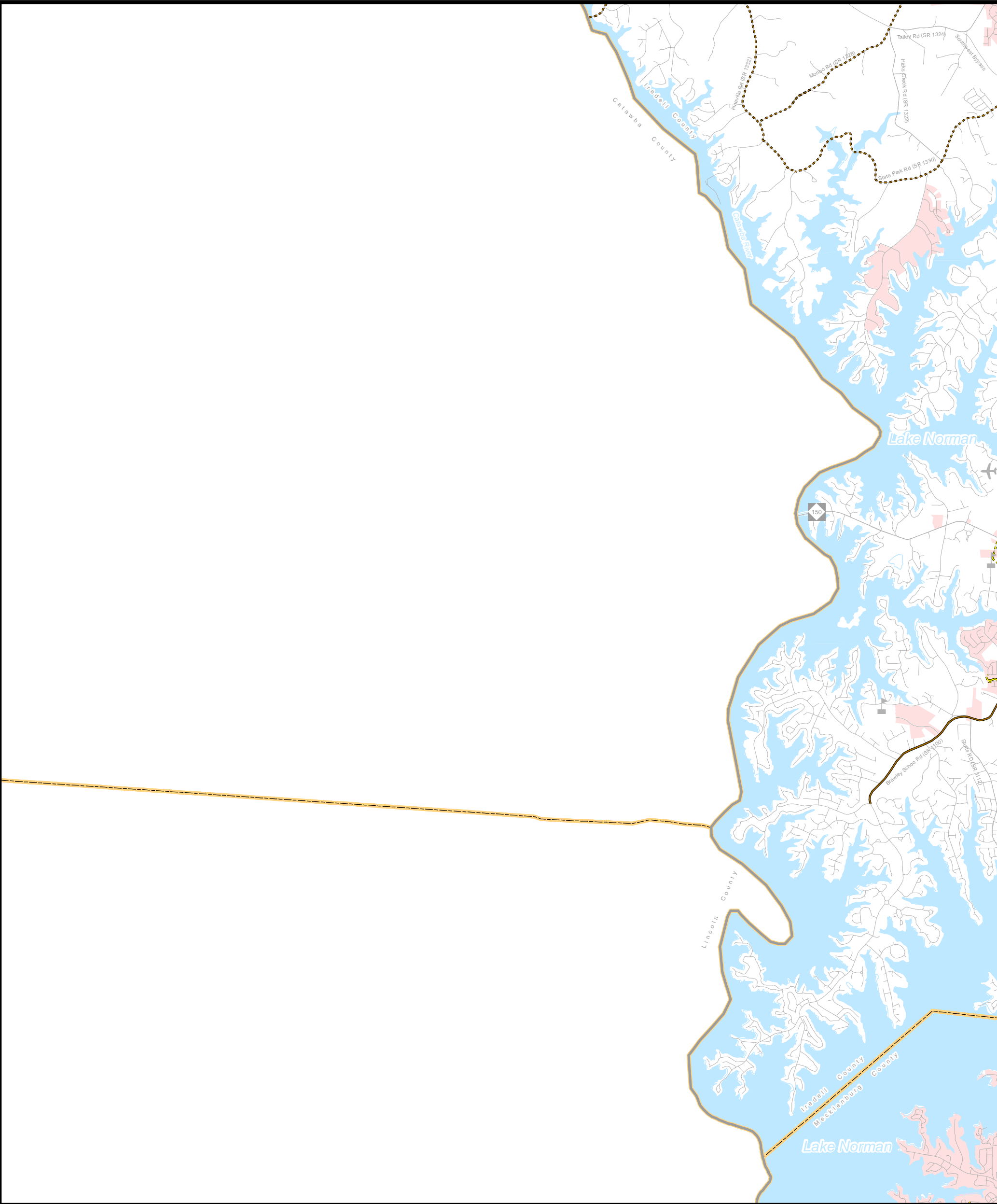
North Carolina

Comprehensive

Transportation Plan

Plan date: January 18, 2017

Revision date: October 17, 2018



Sidewalks

- Existing
- Needs Improvement
- Recommended

Multi-Use Paths

- Existing
- Needs Improvement
- Recommended

Grade Separations

- Existing
- Needs Improvement
- Recommended

Interchanges

- Existing
- Needs Improvement
- Recommended

Interchanges with Managed Lanes Access

- Existing
- Needs Improvement
- Recommended



Sheet 5C of 5

Base map date: January 4, 2017

Refer to CTP document for more details

Pedestrian Map

Inset C



charlotte regional transportation planning organization

AMENDED

Charlotte Regional Transportation Planning Organization

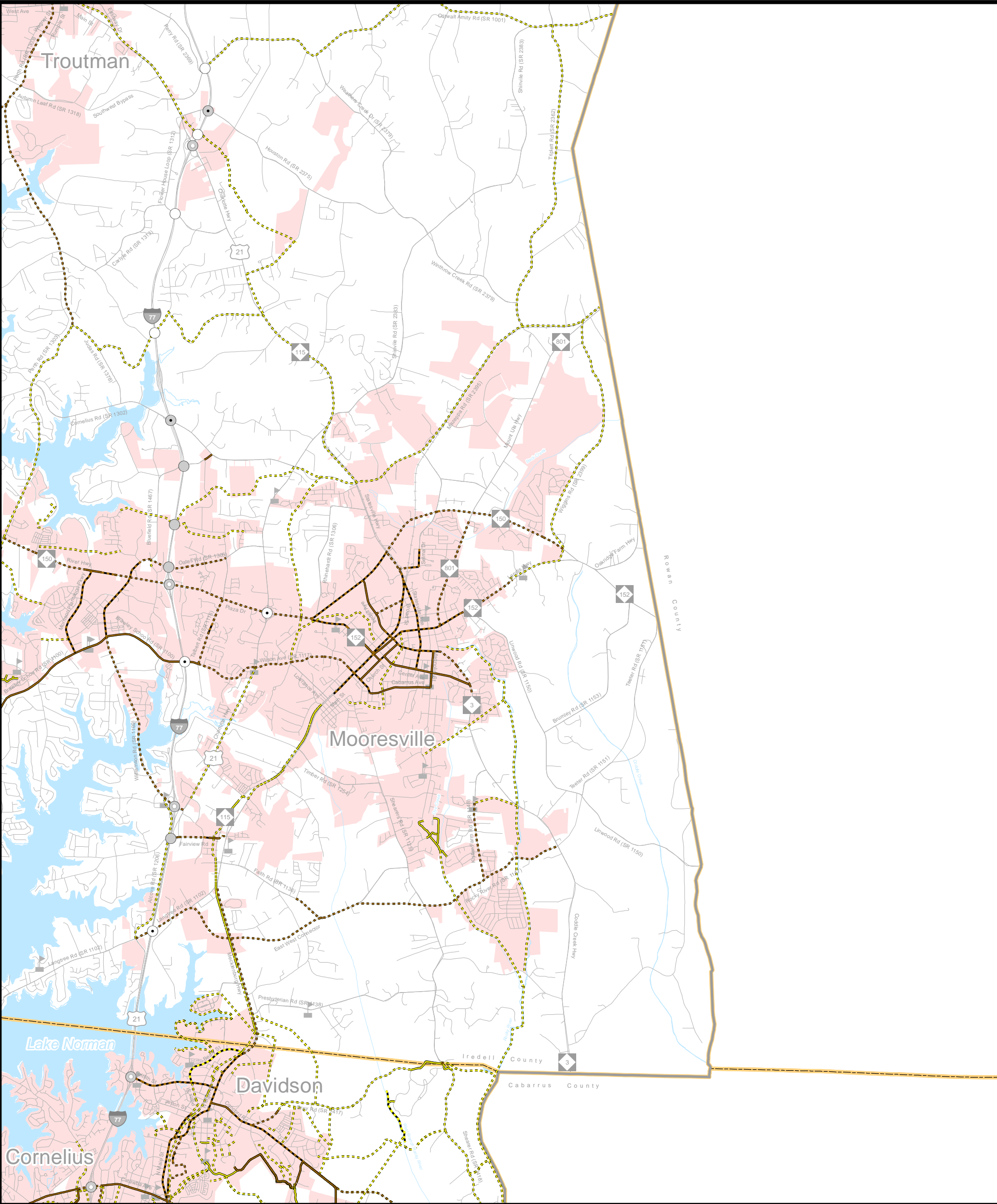
North Carolina

Comprehensive

Transportation Plan

Plan date: January 18, 2017

Revision date: October 17, 2018



- | | |
|--|---|
| <p>Sidewalks</p> <ul style="list-style-type: none"> Existing Needs Improvement Recommended | <p>Multi-Use Paths</p> <ul style="list-style-type: none"> Existing Needs Improvement Recommended |
| <p>Grade Separations</p> <ul style="list-style-type: none"> Existing Needs Improvement Recommended | <p>Interchanges</p> <ul style="list-style-type: none"> Existing Needs Improvement Recommended |
| <p>Interchanges with Managed Lanes Access</p> <ul style="list-style-type: none"> Existing Needs Improvement Recommended | |



Sheet 5D of 5

Base map date: January 4, 2017

Refer to CTP document for more details

Pedestrian Map

Inset D



charlotte regional transportation planning organization

AMENDED

Charlotte Regional Transportation Planning Organization

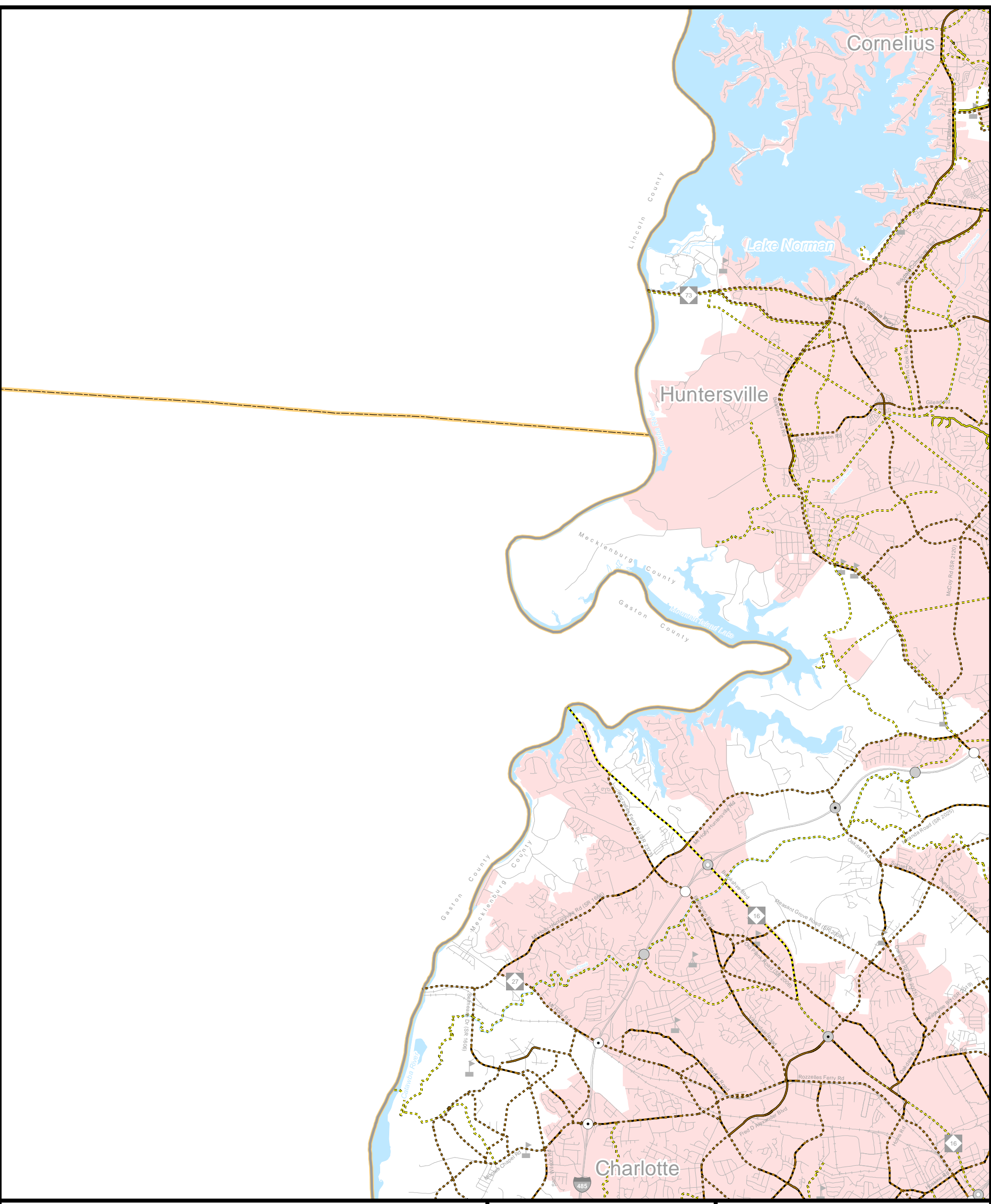
North Carolina

Comprehensive

Transportation Plan

Plan date: January 18, 2017

Revision date: October 17, 2018



- | | |
|---|------------------------|
| Sidewalks | Multi-Use Paths |
| Existing | Existing |
| Needs Improvement | Needs Improvement |
| Recommended | Recommended |
| Grade Separations | Interchanges |
| Existing | Existing |
| Needs Improvement | Needs Improvement |
| Recommended | Recommended |
| Interchanges with Managed Lanes Access | |
| Existing | |
| Needs Improvement | |
| Recommended | |



Sheet 5E of 5

Base map date: January 4, 2017

Refer to CTP document for more details

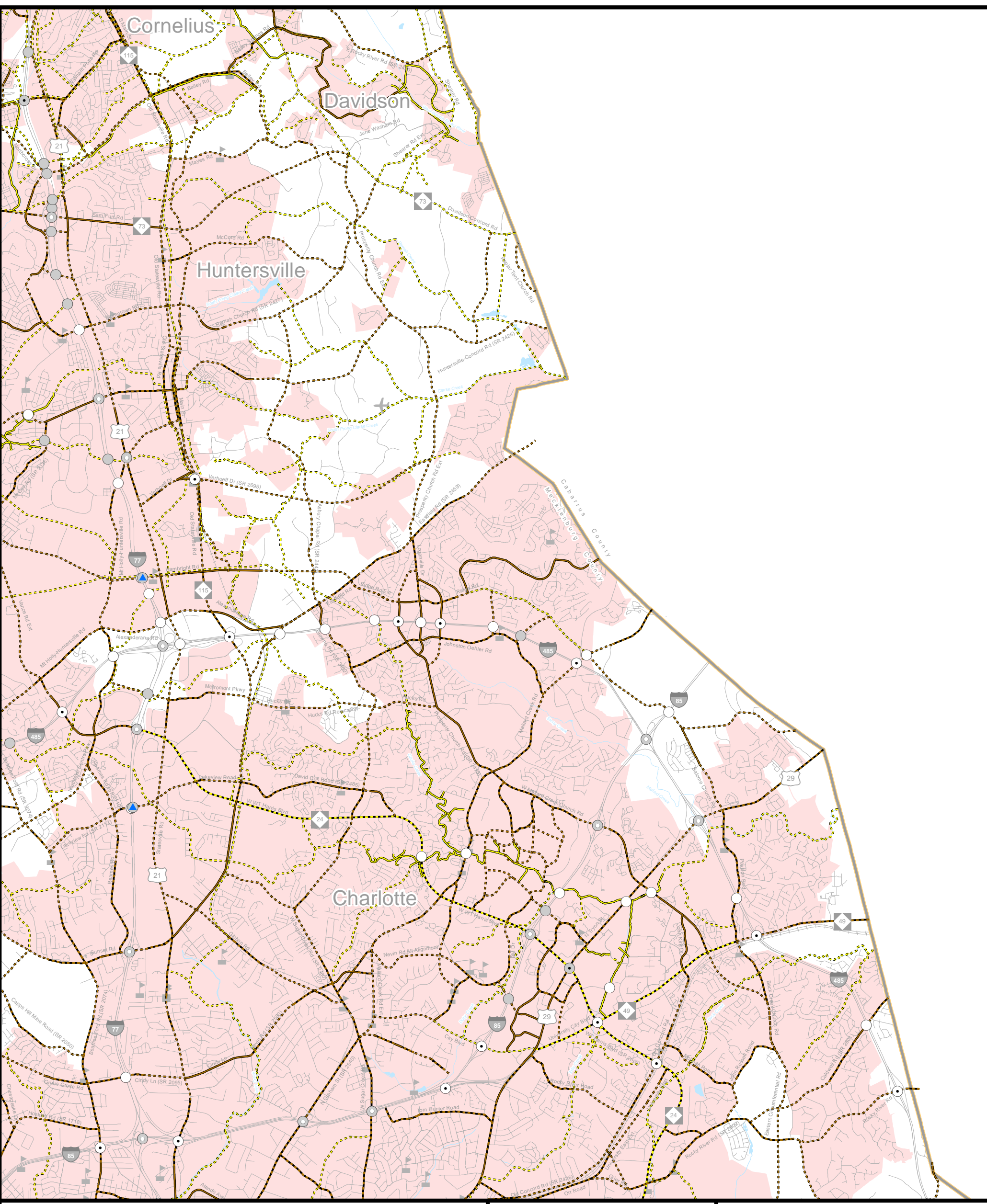
Pedestrian Map

Inset E



AMENDED
Charlotte Regional Transportation Planning Organization
 North Carolina

Comprehensive Transportation Plan
 Plan date: January 18, 2017
 Revision date: October 17, 2018



- | | |
|--|---|
| <p>Sidewalks</p> <ul style="list-style-type: none"> Existing Needs Improvement Recommended | <p>Multi-Use Paths</p> <ul style="list-style-type: none"> Existing Needs Improvement Recommended |
| <p>Grade Separations</p> <ul style="list-style-type: none"> Existing Needs Improvement Recommended | <p>Interchanges</p> <ul style="list-style-type: none"> Existing Needs Improvement Recommended |
| <p>Interchanges with Managed Lanes Access</p> <ul style="list-style-type: none"> Existing Needs Improvement Recommended | |



Sheet 5F of 5

Base map date: January 4, 2017

Refer to CTP document for more details

Pedestrian Map

Inset F



AMENDED

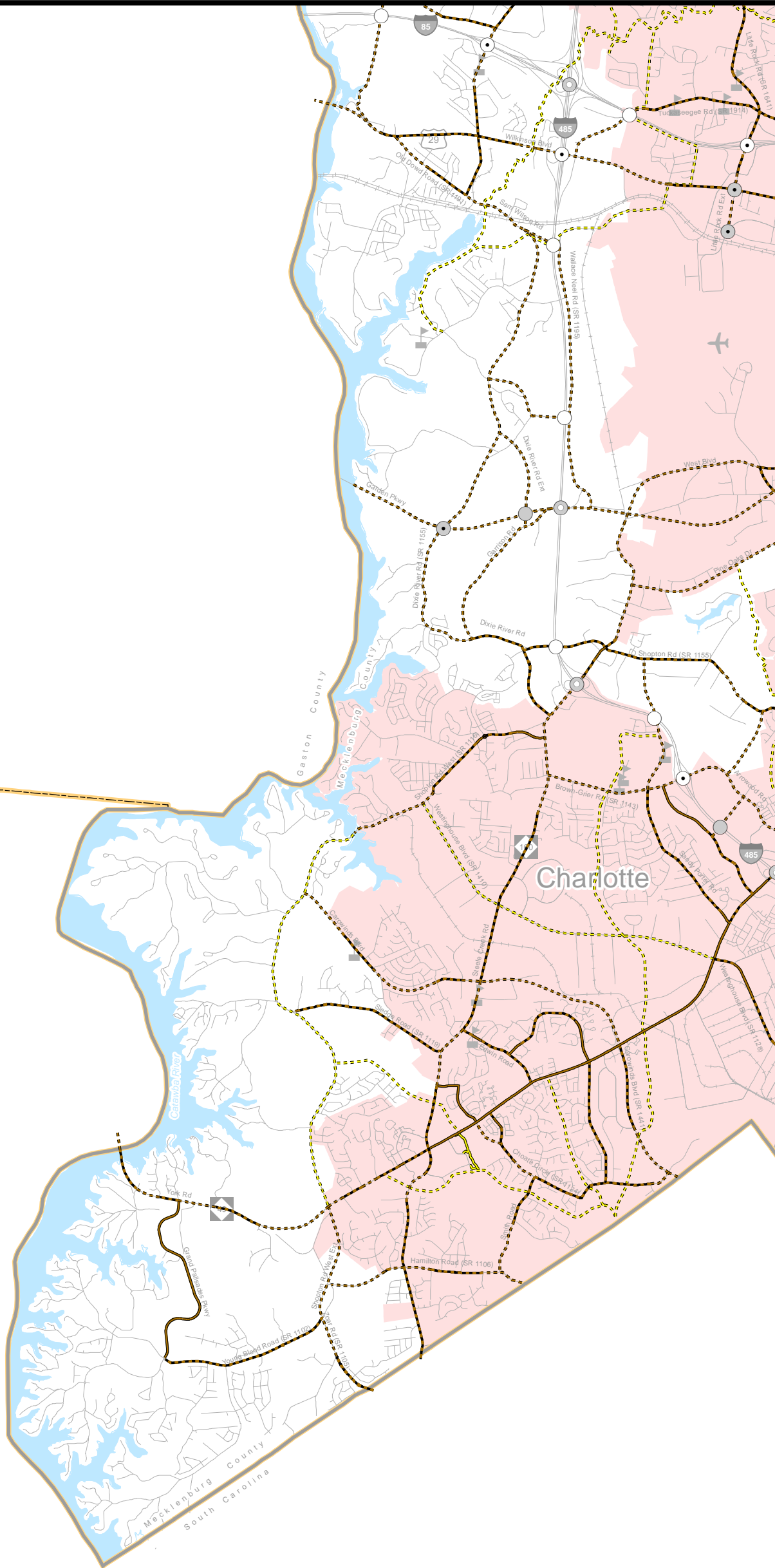
Charlotte Regional Transportation Planning Organization

North Carolina

Comprehensive Transportation Plan

Plan date: January 18, 2017

Revision date: October 17, 2018



Sidewalks

- Existing
- Needs Improvement
- Recommended

Grade Separations

- Existing
- Needs Improvement
- Recommended

Interchanges with Managed Lanes Access

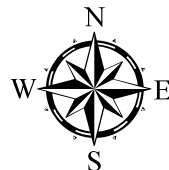
- Existing
- Needs Improvement
- Recommended

Multi-Use Paths

- Existing
- Needs Improvement
- Recommended

Interchanges

- Existing
- Needs Improvement
- Recommended



Sheet 5G of 5

Base map date: January 4, 2017

Refer to CTP document for more details

Pedestrian Map

Inset G



charlotte regional transportation planning organization

AMENDED

Charlotte Regional Transportation Planning Organization

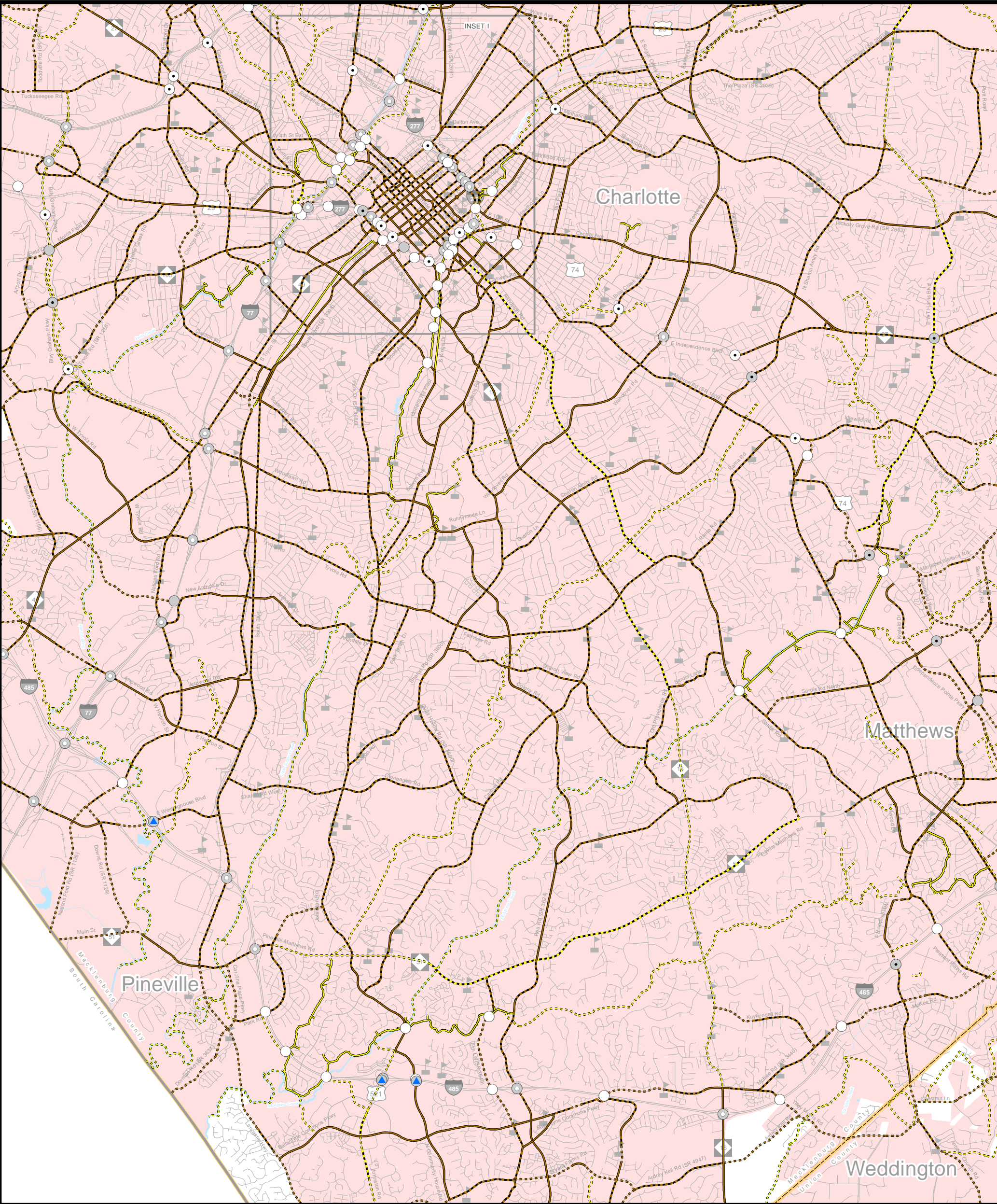
North Carolina

Comprehensive

Transportation Plan

Plan date: January 18, 2017

Revision date: October 17, 2018



Sidewalks

- Existing
- Needs Improvement
- Recommended

Grade Separations

- Existing
- Needs Improvement
- Recommended

Interchanges with Managed Lanes Access

- Existing
- Needs Improvement
- Recommended

Multi-Use Paths

- Existing
- Needs Improvement
- Recommended

Interchanges

- Existing
- Needs Improvement
- Recommended



Sheet 5H of 5

Base map date: January 4, 2017

Refer to CTP document for more details

Pedestrian Map

Inset H



charlotte regional transportation planning organization

AMENDED

Charlotte Regional Transportation Planning Organization

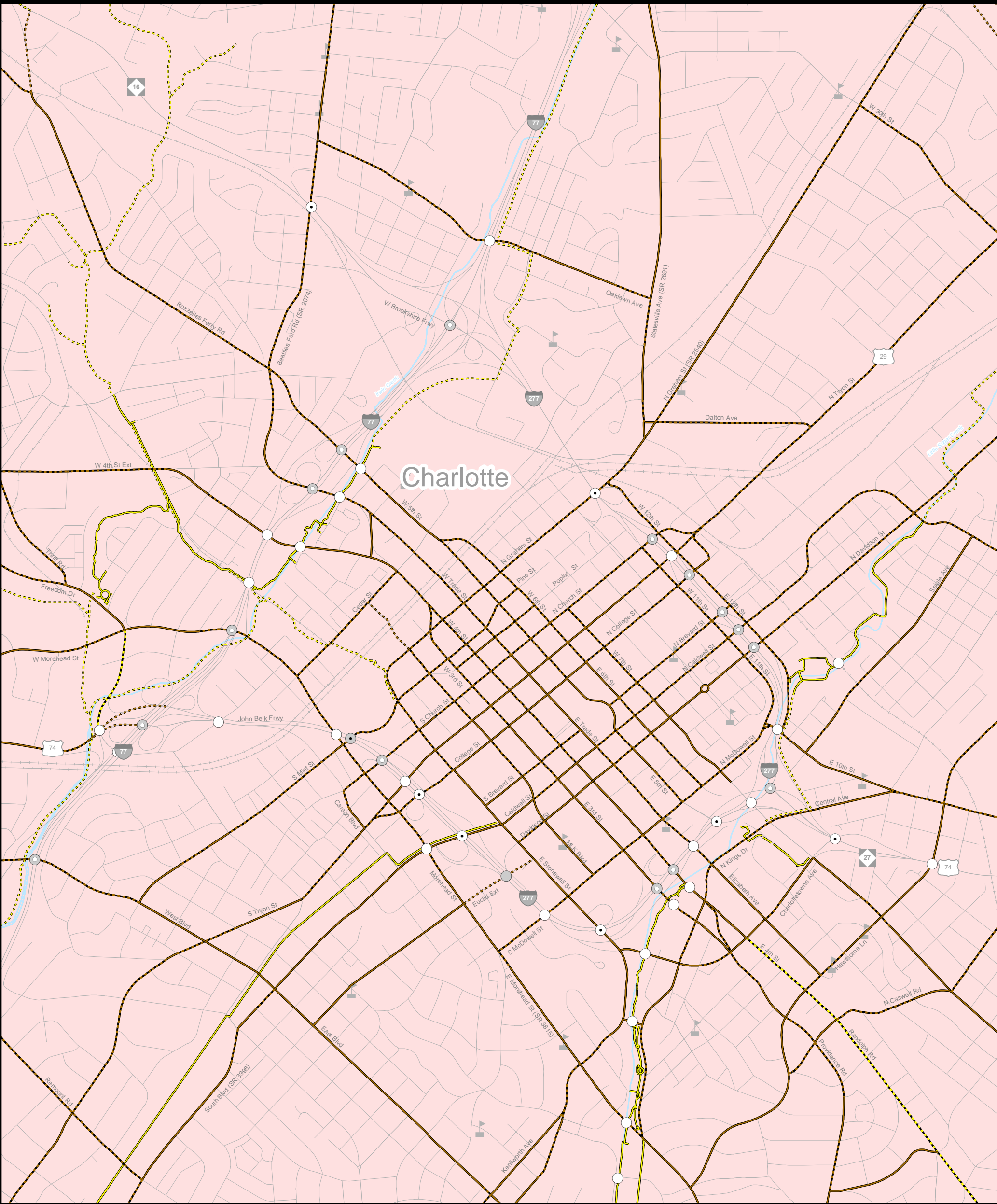
North Carolina

Comprehensive

Transportation Plan

Plan date: January 18, 2017

Revision date: October 17, 2018



Sidewalks

- Existing
- Needs Improvement
- Recommended

Grade Separations

- Existing
- Needs Improvement
- Recommended

Interchanges with Managed Lanes Access

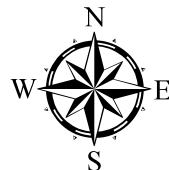
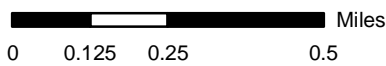
- Existing
- Needs Improvement
- Recommended

Multi-Use Paths

- Existing
- Needs Improvement
- Recommended

Interchanges

- Existing
- Needs Improvement
- Recommended



Sheet 51 of 5

Base map date: January 4, 2017

Refer to CTP document for more details

Pedestrian Map

Inset I



charlotte regional transportation planning organization

AMENDED

Charlotte Regional Transportation Planning Organization

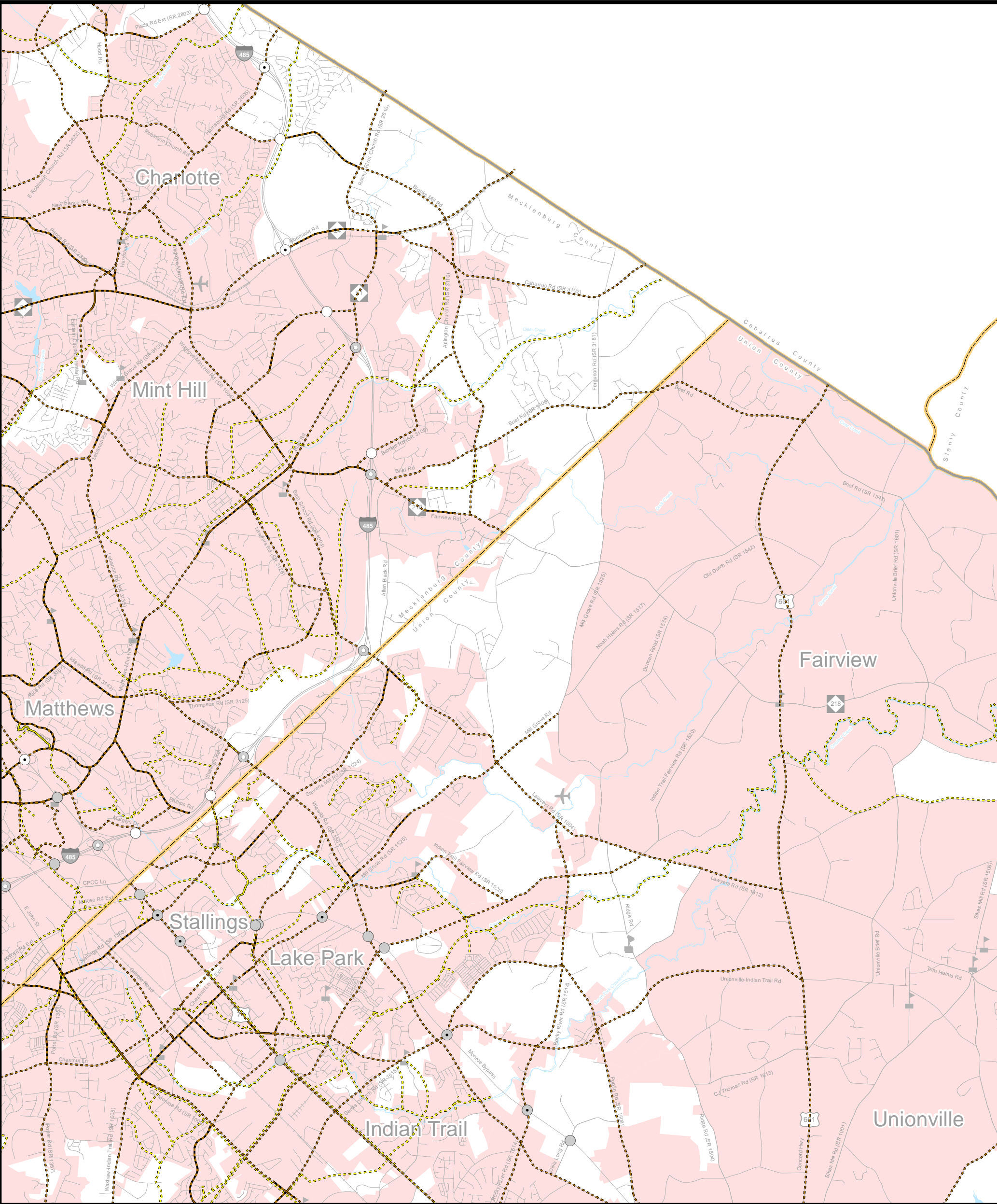
North Carolina

Comprehensive

Transportation Plan

Plan date: January 18, 2017

Revision date: October 17, 2018



Sidewalks

- Existing
- Needs Improvement
- Recommended

Multi-Use Paths

- Existing
- Needs Improvement
- Recommended

Grade Separations

- Existing
- Needs Improvement
- Recommended

Interchanges

- Existing
- Needs Improvement
- Recommended

Interchanges with Managed Lanes Access

- Existing
- Needs Improvement
- Recommended



Sheet 5J of 5

Base map date: January 4, 2017

Refer to CTP document for more details

Pedestrian Map

Inset J



charlotte regional transportation planning organization

AMENDED

Charlotte Regional Transportation Planning Organization

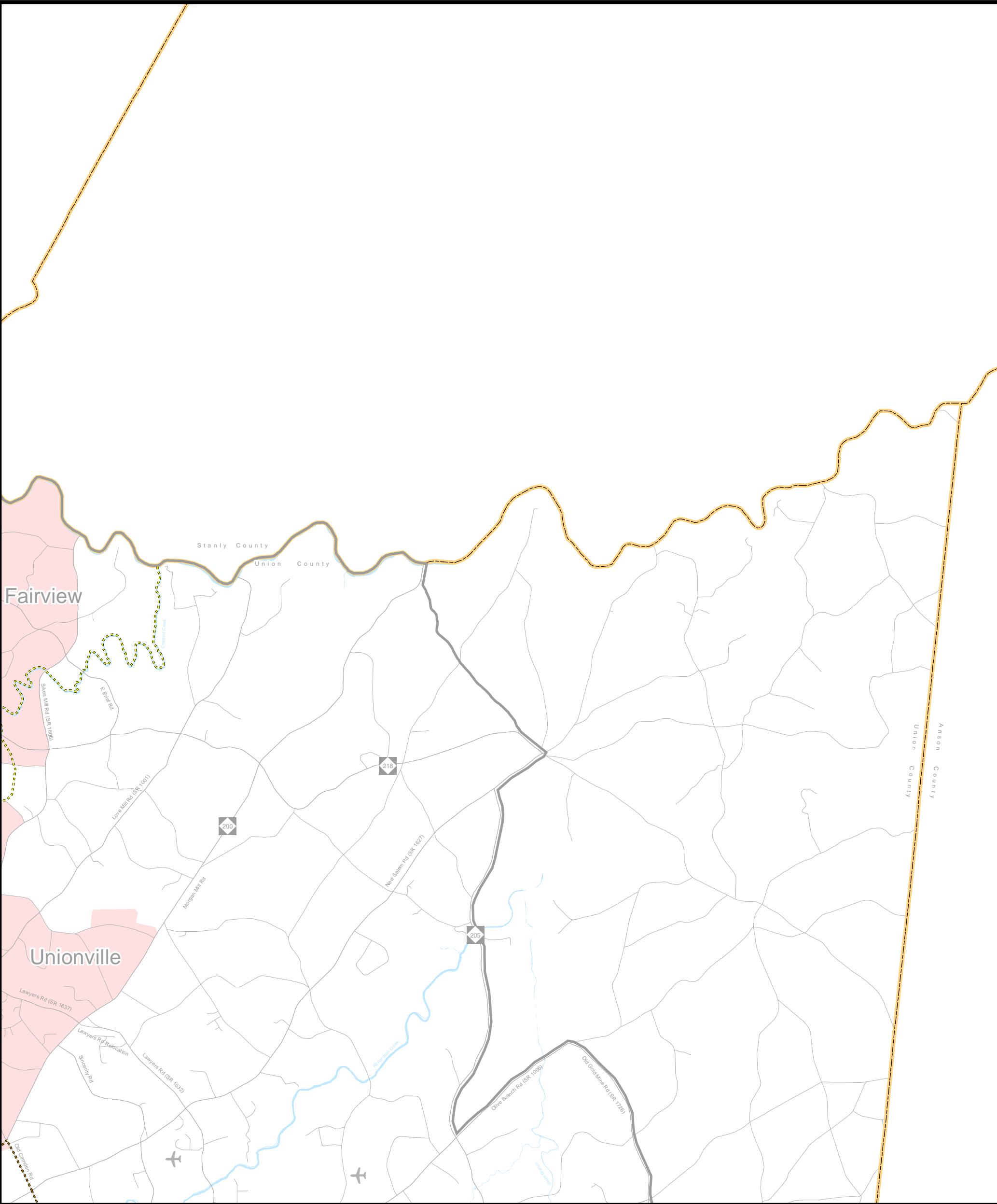
North Carolina

Comprehensive

Transportation Plan

Plan date: January 18, 2017

Revision date: October 17, 2018



Sidewalks

- Existing
- Needs Improvement
- Recommended

Multi-Use Paths

- Existing
- Needs Improvement
- Recommended

Grade Separations

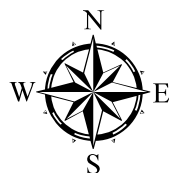
- Existing
- Needs Improvement
- Recommended

Interchanges

- Existing
- Needs Improvement
- Recommended

Interchanges with Managed Lanes Access

- Existing
- Needs Improvement
- Recommended



Sheet 5K of 5

Base map date: January 4, 2017

Refer to CTP document for more details

Pedestrian Map

Inset K



charlotte regional transportation planning organization

AMENDED

Charlotte Regional Transportation Planning Organization

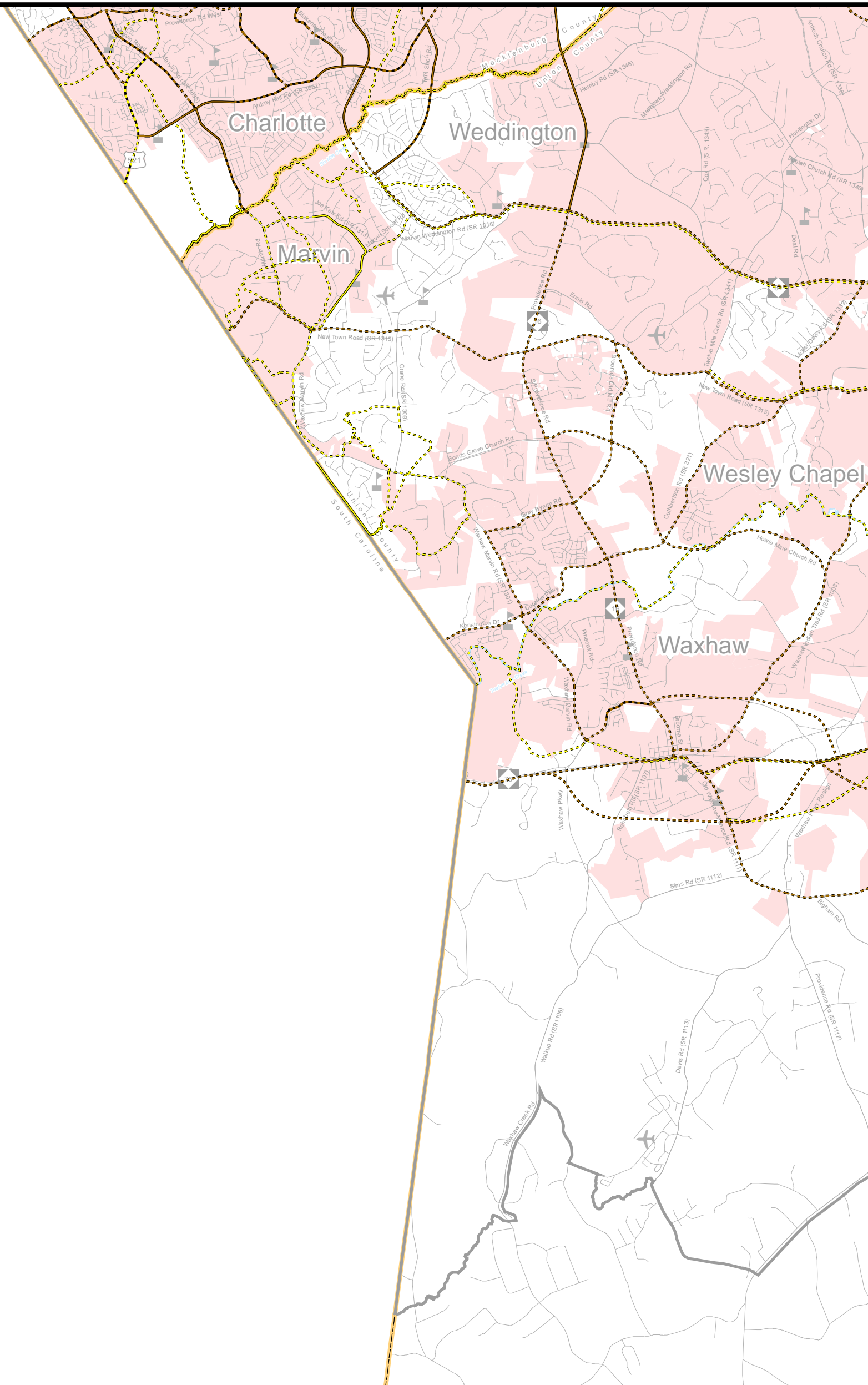
North Carolina

Comprehensive

Transportation Plan

Plan date: January 18, 2017

Revision date: October 17, 2018



Sidewalks

- Existing
- Needs Improvement
- Recommended

Multi-Use Paths

- Existing
- Needs Improvement
- Recommended

Grade Separations

- Existing
- Needs Improvement
- Recommended

Interchanges

- Existing
- Needs Improvement
- Recommended

Interchanges with Managed Lanes Access

- Existing
- Needs Improvement
- Recommended



Sheet 5L of 5

Base map date: January 4, 2017

Refer to CTP document for more details

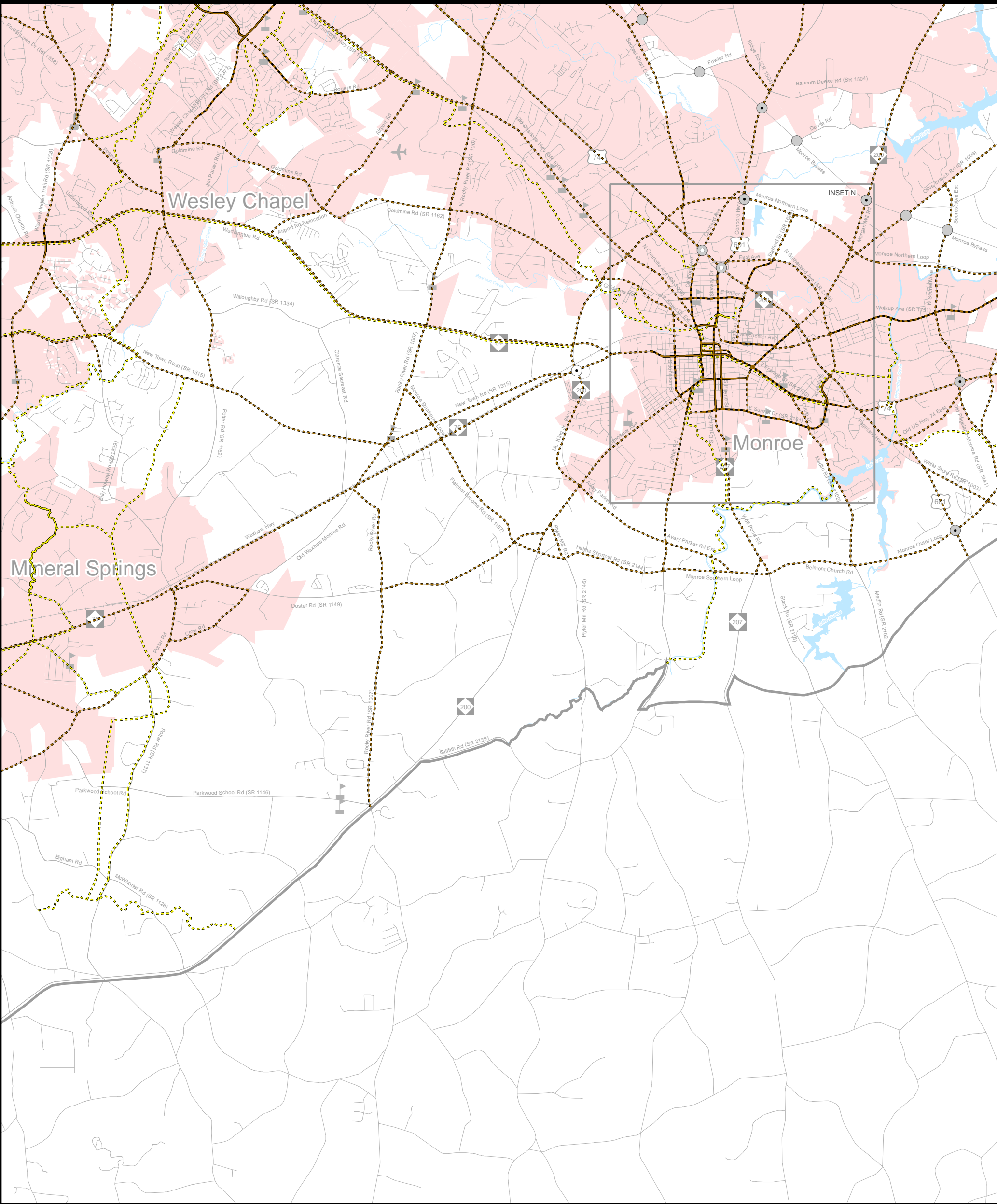
Pedestrian Map

Inset L



AMENDED
Charlotte Regional Transportation Planning Organization
 North Carolina

Comprehensive Transportation Plan
 Plan date: January 18, 2017
 Revision date: October 17, 2018



<p>Sidewalks</p> <p>Existing: Solid brown line</p> <p>Needs Improvement: Dashed brown line</p> <p>Recommended: Dotted brown line</p>	<p>Multi-Use Paths</p> <p>Existing: Solid yellow line</p> <p>Needs Improvement: Dashed yellow line</p> <p>Recommended: Dotted yellow line</p>
<p>Grade Separations</p> <p>Existing: Circle with a dot</p> <p>Needs Improvement: Circle with a horizontal line</p> <p>Recommended: Circle with a vertical line</p>	<p>Interchanges</p> <p>Existing: Circle with a dot</p> <p>Needs Improvement: Circle with a horizontal line</p> <p>Recommended: Circle with a vertical line</p>
<p>Interchanges with Managed Lanes Access</p> <p>Existing: Blue triangle pointing up</p> <p>Needs Improvement: Grey triangle pointing up</p> <p>Recommended: Blue triangle pointing up</p>	

0 0.5 1 2 Miles

Sheet 5M of 5

Base map date: January 4, 2017

Refer to CTP document for more details

Pedestrian Map

Inset M

charlotte regional transportation planning organization

AMENDED

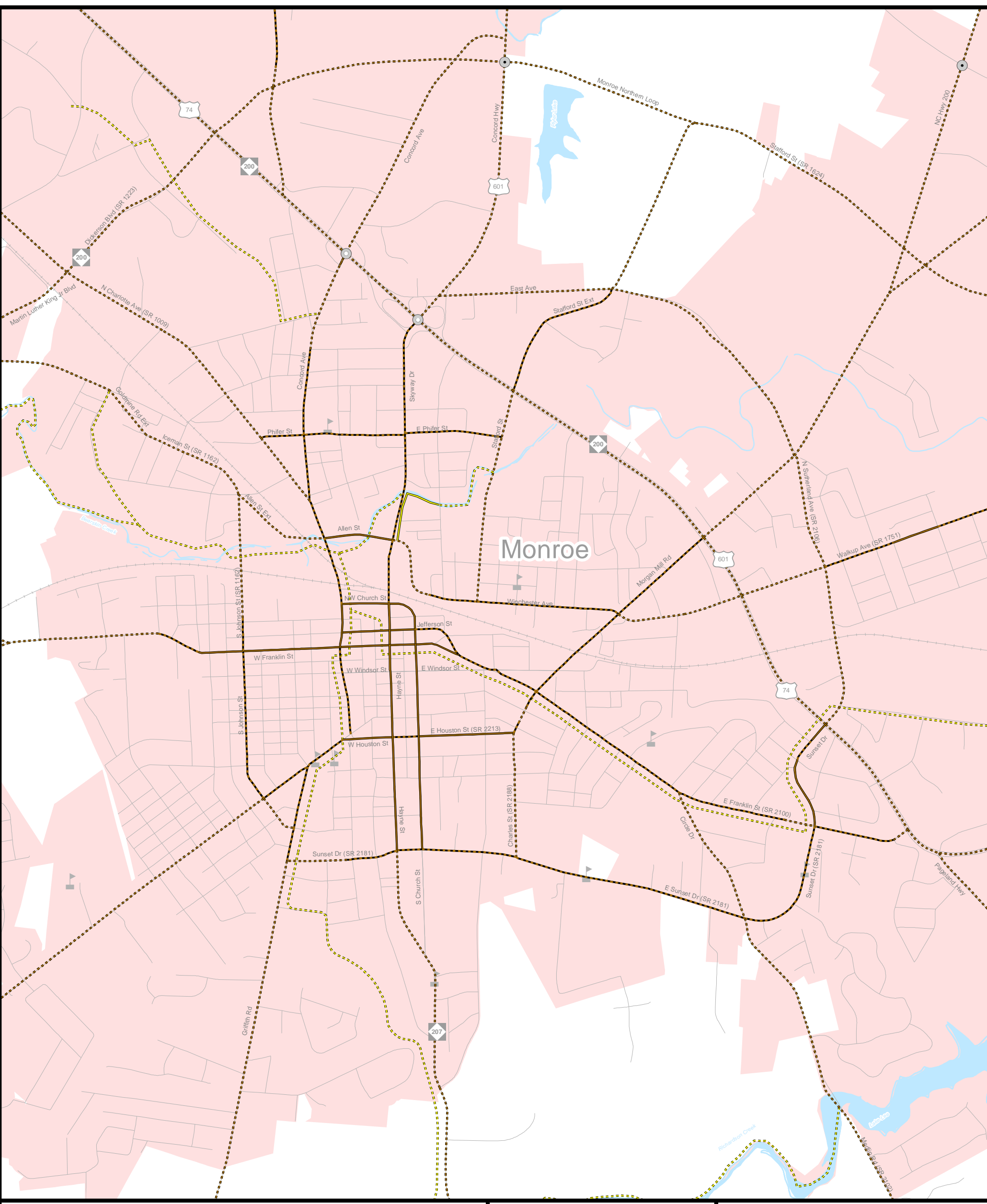
Charlotte Regional Transportation Planning Organization

North Carolina

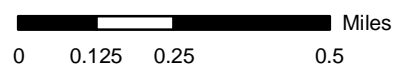
Comprehensive Transportation Plan

Plan date: January 18, 2017

Revision date: October 17, 2018



- | | |
|--|---|
| <p>Sidewalks</p> <ul style="list-style-type: none"> Existing Needs Improvement Recommended | <p>Multi-Use Paths</p> <ul style="list-style-type: none"> Existing Needs Improvement Recommended |
| <p>Grade Separations</p> <ul style="list-style-type: none"> Existing Needs Improvement Recommended | <p>Interchanges</p> <ul style="list-style-type: none"> Existing Needs Improvement Recommended |
| <p>Interchanges with Managed Lanes Access</p> <ul style="list-style-type: none"> Existing Needs Improvement Recommended | |



Sheet 5N of 5

Base map date: January 4, 2017
 Refer to CTP document for more details

Pedestrian Map
Inset N

CRTPO
charlotte regional transportation planning organization

AMENDED
Charlotte Regional Transportation Planning Organization
 North Carolina

Comprehensive Transportation Plan
 Plan date: January 18, 2017
 Revision date: October 17, 2018