

Sidewalks

- Existing
- Needs Improvement
- Recommended

Multi-Use Paths

- Existing
- Needs Improvement
- Recommended

Grade Separations

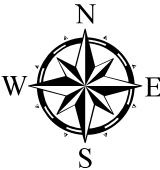
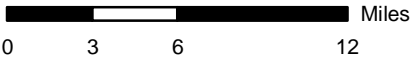
- Existing
- Needs Improvement
- Recommended

Interchanges

- Existing
- Needs Improvement
- Recommended

Interchanges with Managed Lanes Access

- Existing
- Needs Improvement
- Recommended



Sheet 5 of 5

Base map date: January 4, 2017

Refer to CTP document for more details

Pedestrian Map

C RTP

charlotte regional transportation planning organization

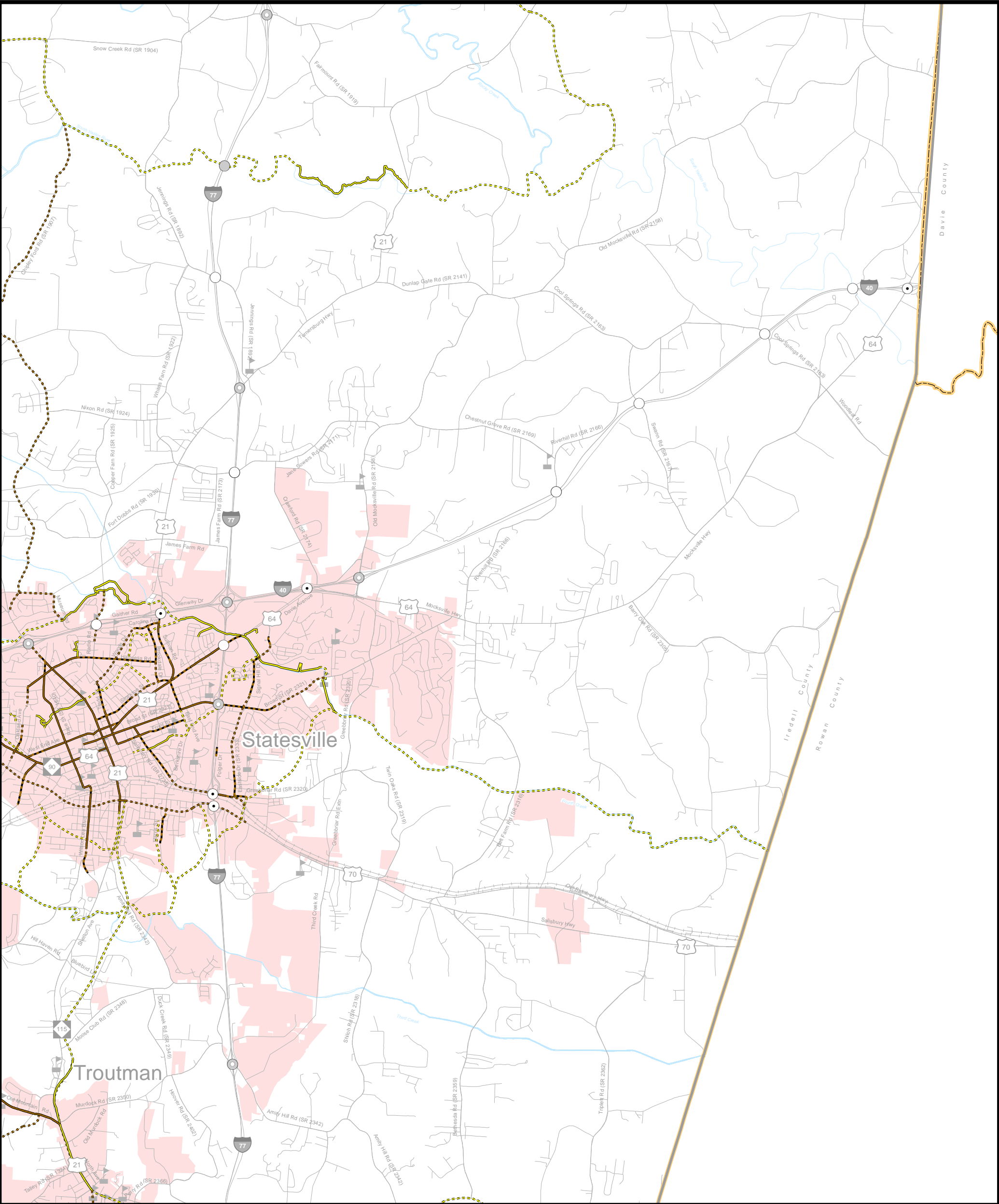
AMENDED

Charlotte Regional Transportation Planning Organization

North Carolina

Comprehensive Transportation Plan

Plan date: January 18, 2017
Revision date: October 17, 2018
Revision date(2): January 15, 2020



Sidewalks

Existing

Needs Improvement

Recommended

Multi-Use Paths

Existing

Needs Improvement

Recommended

Grade Separations

Existing

Needs Improvement

Recommended

Interchanges

Existing

Needs Improvement

Recommended

Interchanges with Managed Lanes Access

Existing

Needs Improvement


Recommended

Sheet 5B of 5

Base map date: January 4, 2017

Refer to CTP document for more details

Pedestrian Map
Inset B



charlotte regional transportation planning organization

AMENDED

Charlotte Regional Transportation
Planning Organization

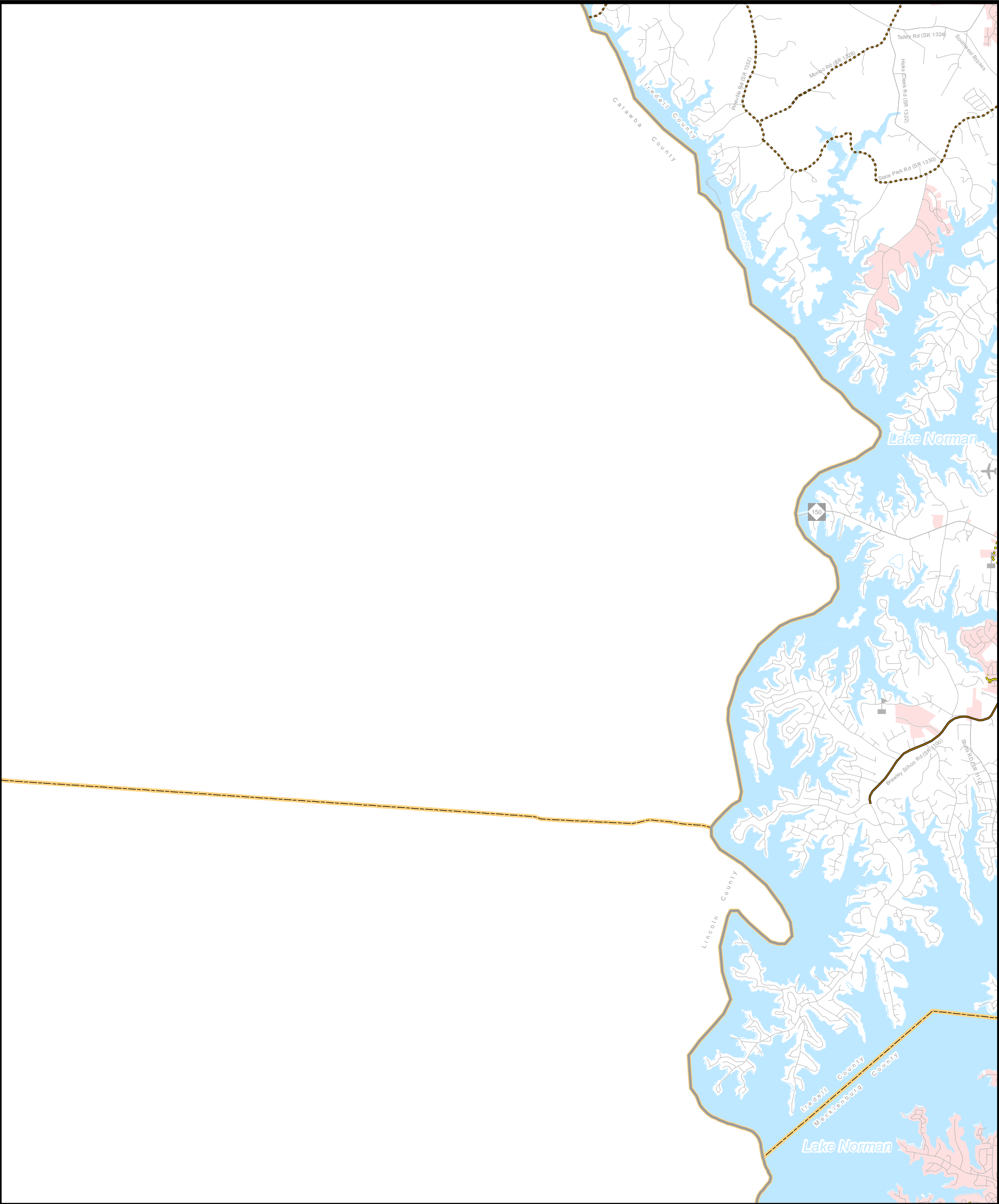
North Carolina

Comprehensive
Transportation Plan

Plan date: January 18, 2017

Revision date: October 17, 2018

Revision date(2): January 15, 2020



Sidewalks

Existing

Needs Improvement

Recommended

Multi-Use Paths

Existing

Needs Improvement

Recommended

Grade Separations

Existing

Needs Improvement

Recommended

Interchanges

Existing

Needs Improvement

Recommended

Interchanges with Managed Lanes Access

Existing

Needs Improvement

Recommended

00.512Miles

N

W

E

S

Sheet 5C of 5

Base map date: January 4, 2017

Refer to CTP document for more details

Pedestrian Map

Inset C

C RTP

charlotte regional transportation planning organization

AMENDED

Charlotte Regional Transportation Planning Organization

North Carolina

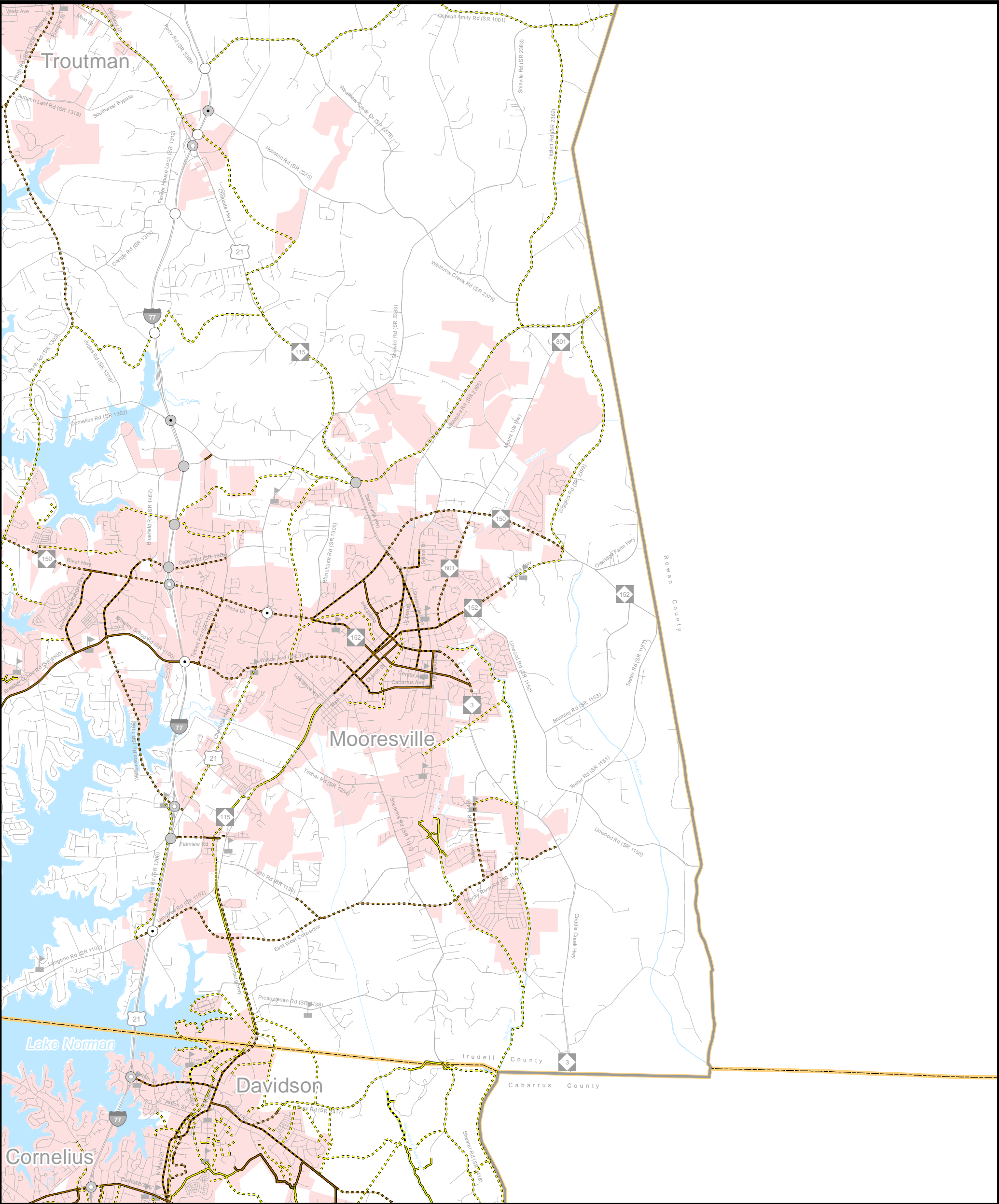
Comprehensive

Transportation Plan

Plan date: January 18, 2017

Revision date: October 17, 2018

Revision date(2): January 15, 2020



- Sidewalks**

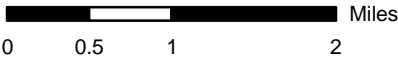
 - Existing
 - Needs Improvement
 - Recommended
- Multi-Use Paths**

 - Existing
 - Needs Improvement
 - Recommended
- Grade Separations**

 - Existing
 - Needs Improvement
 - Recommended
- Interchanges**

 - Existing
 - Needs Improvement
 - Recommended
- Interchanges with Managed Lanes Access**

 - Existing
 - Needs Improvement
 - Recommended



Sheet 5D of 5

Base map date: January 4, 2017

Refer to CTP document for more details

Pedestrian Map Inset D

CRTPO
charlotte regional transportation planning organization

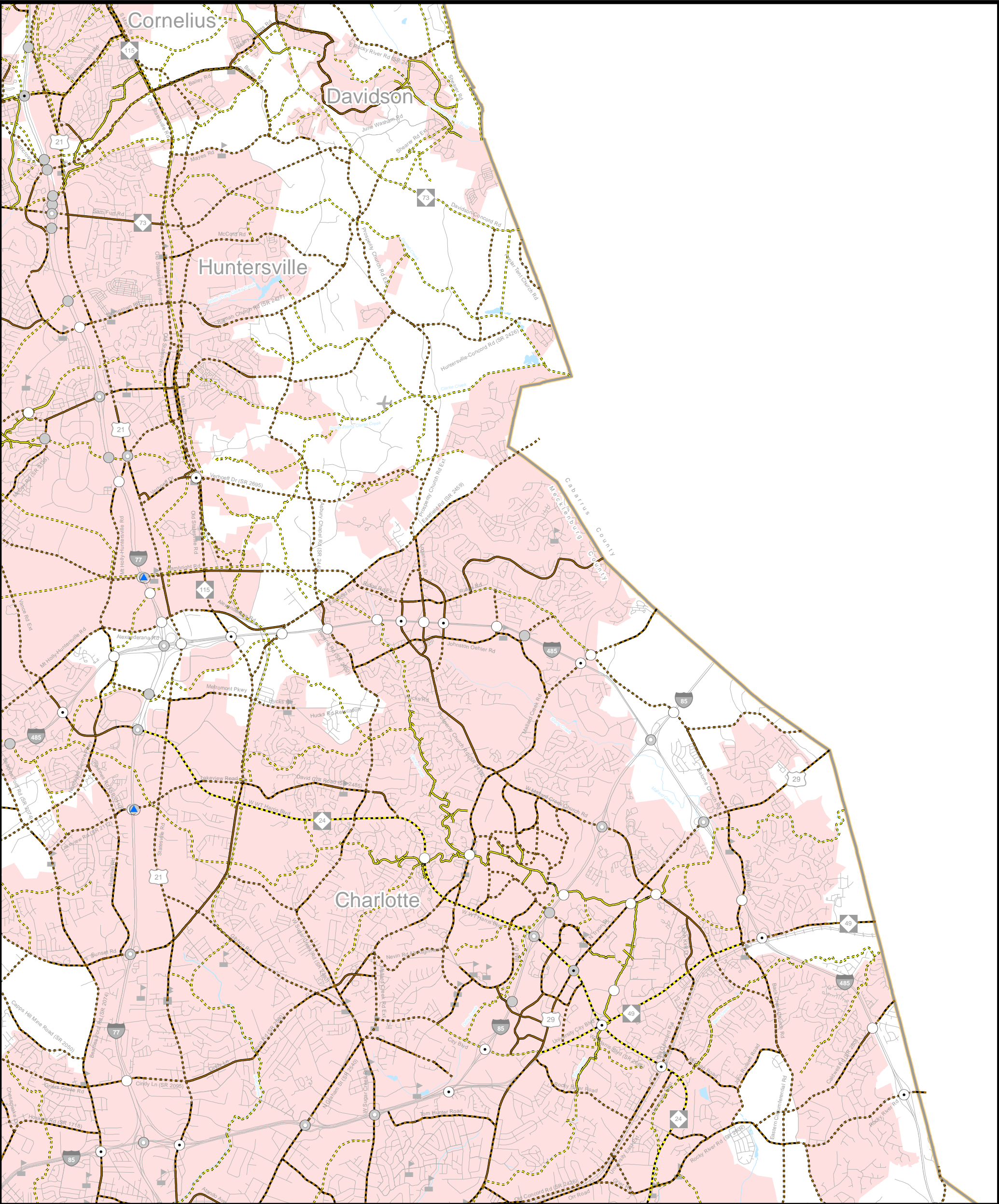
AMENDED

Charlotte Regional Transportation Planning Organization

North Carolina

Comprehensive Transportation Plan

Plan date: January 18, 2017
Revision date: October 17, 2018
Revision date(2): January 15, 2020



Sidewalks

- Existing
- Needs Improvement
- Recommended

Multi-Use Paths

- Existing
- Needs Improvement
- Recommended

Grade Separations

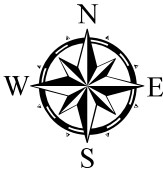
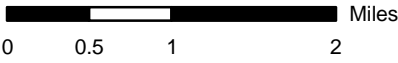
- Existing
- Needs Improvement
- Recommended

Interchanges

- Existing
- Needs Improvement
- Recommended

Interchanges with Managed Lanes Access

- Existing
- Needs Improvement
- Recommended



Sheet 5F of 5

Base map date: January 4, 2017

Refer to CTP document for more details

Pedestrian Map Inset F



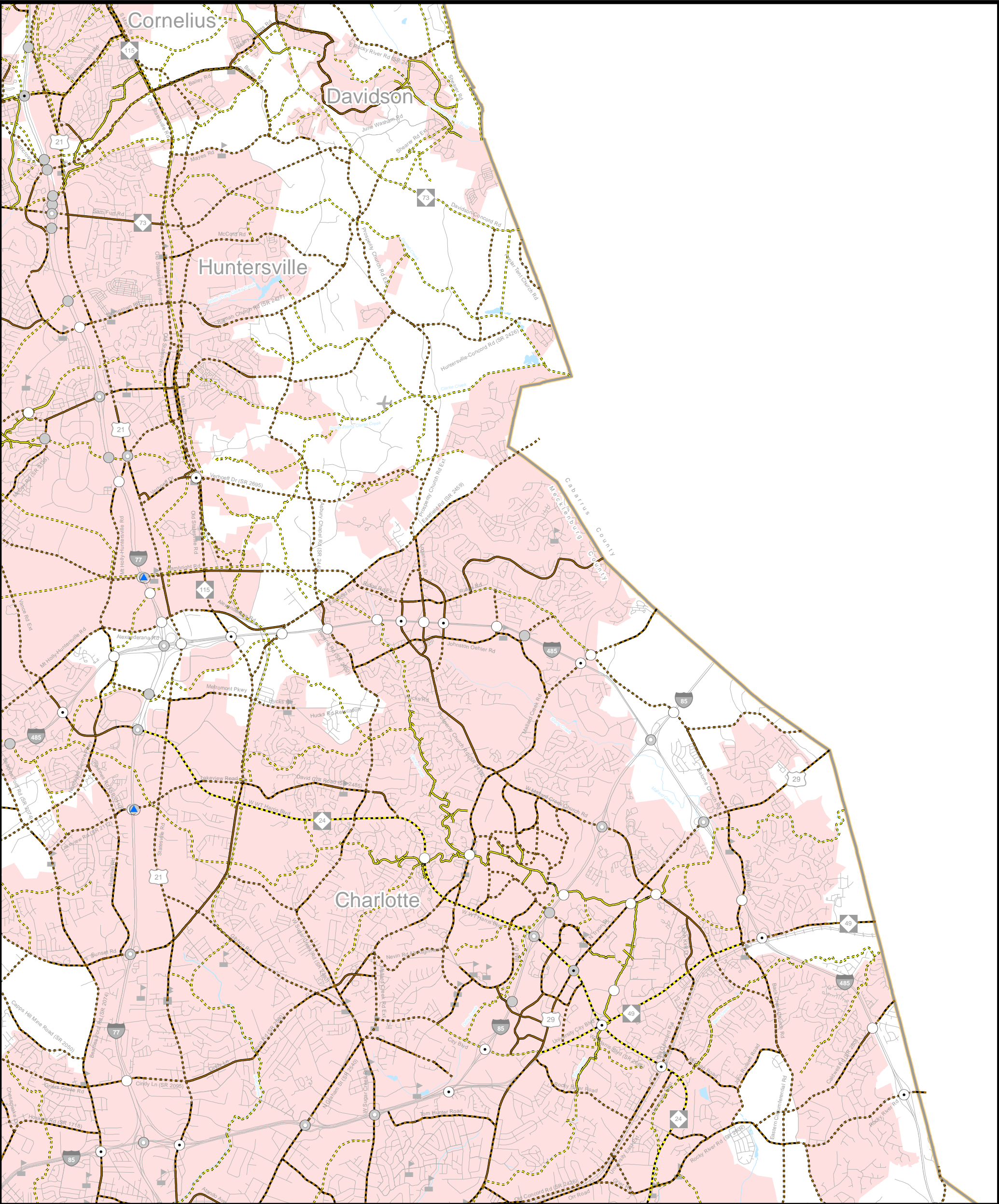
AMENDED

Charlotte Regional Transportation Planning Organization

North Carolina

Comprehensive Transportation Plan

Plan date: January 18, 2017
Revision date: October 17, 2018
Revision date(2): January 15, 2020



Sidewalks

- Existing
- Needs Improvement
- Recommended

Multi-Use Paths

- Existing
- Needs Improvement
- Recommended

Grade Separations

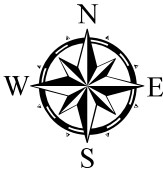
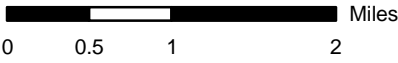
- Existing
- Needs Improvement
- Recommended

Interchanges

- Existing
- Needs Improvement
- Recommended

Interchanges with Managed Lanes Access

- Existing
- Needs Improvement
- Recommended



Sheet 5F of 5

Base map date: January 4, 2017

Refer to CTP document for more details

Pedestrian Map Inset F



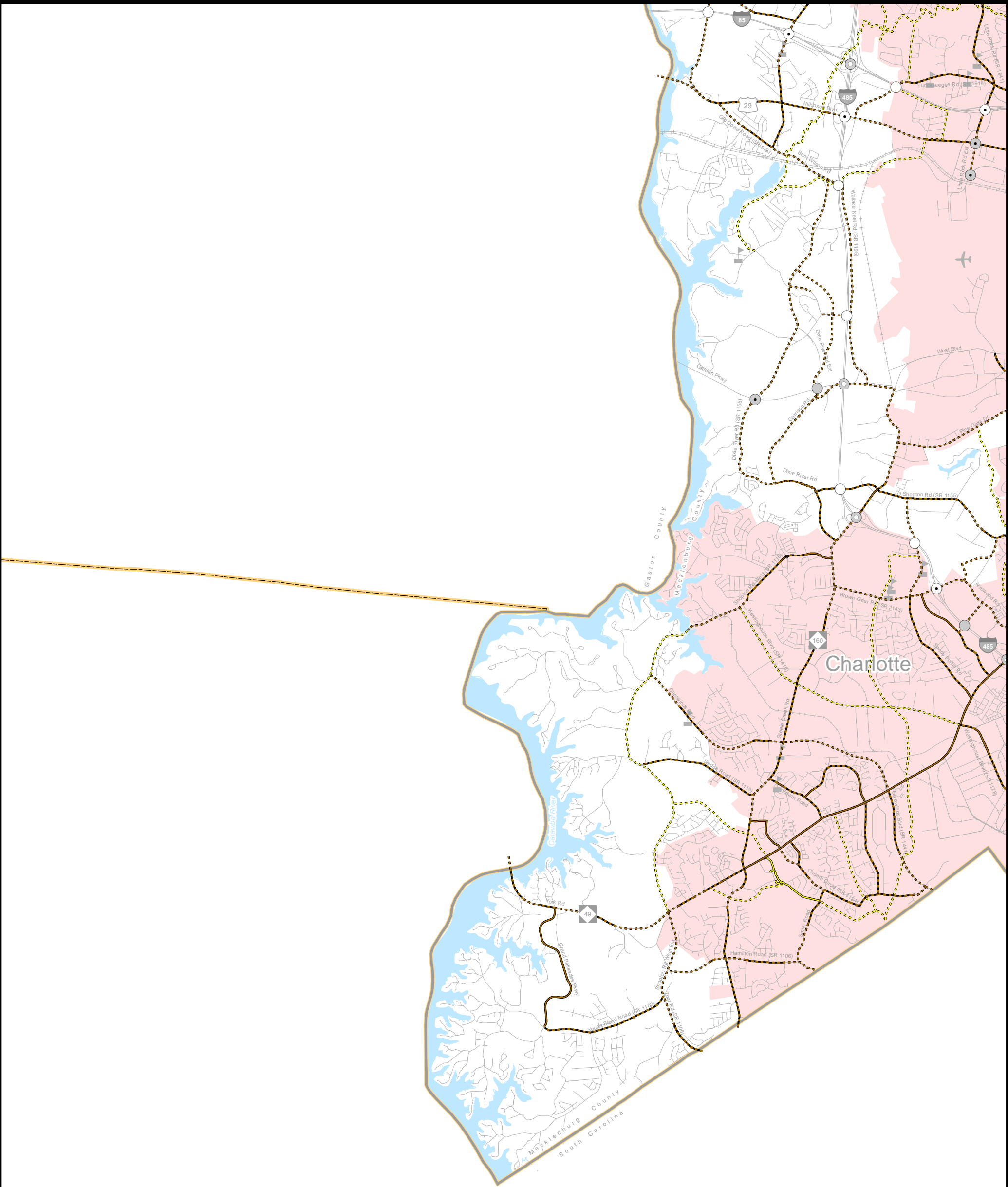
AMENDED

Charlotte Regional Transportation Planning Organization

North Carolina

Comprehensive Transportation Plan

Plan date: January 18, 2017
Revision date: October 17, 2018
Revision date(2): January 15, 2020



Sidewalks

Existing

Needs Improvement

Recommended

Multi-Use Paths

Existing

Needs Improvement

Recommended

Grade Separations

Existing

Needs Improvement

Recommended

Interchanges

Existing

Needs Improvement

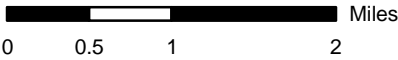
Recommended

Interchanges with Managed Lanes Access

Existing

Needs Improvement

Recommended



Sheet 5G of 5

Base map date: January 4, 2017

Refer to CTP document for more details

Pedestrian Map
Inset G

C RTP

charlotte regional transportation planning organization

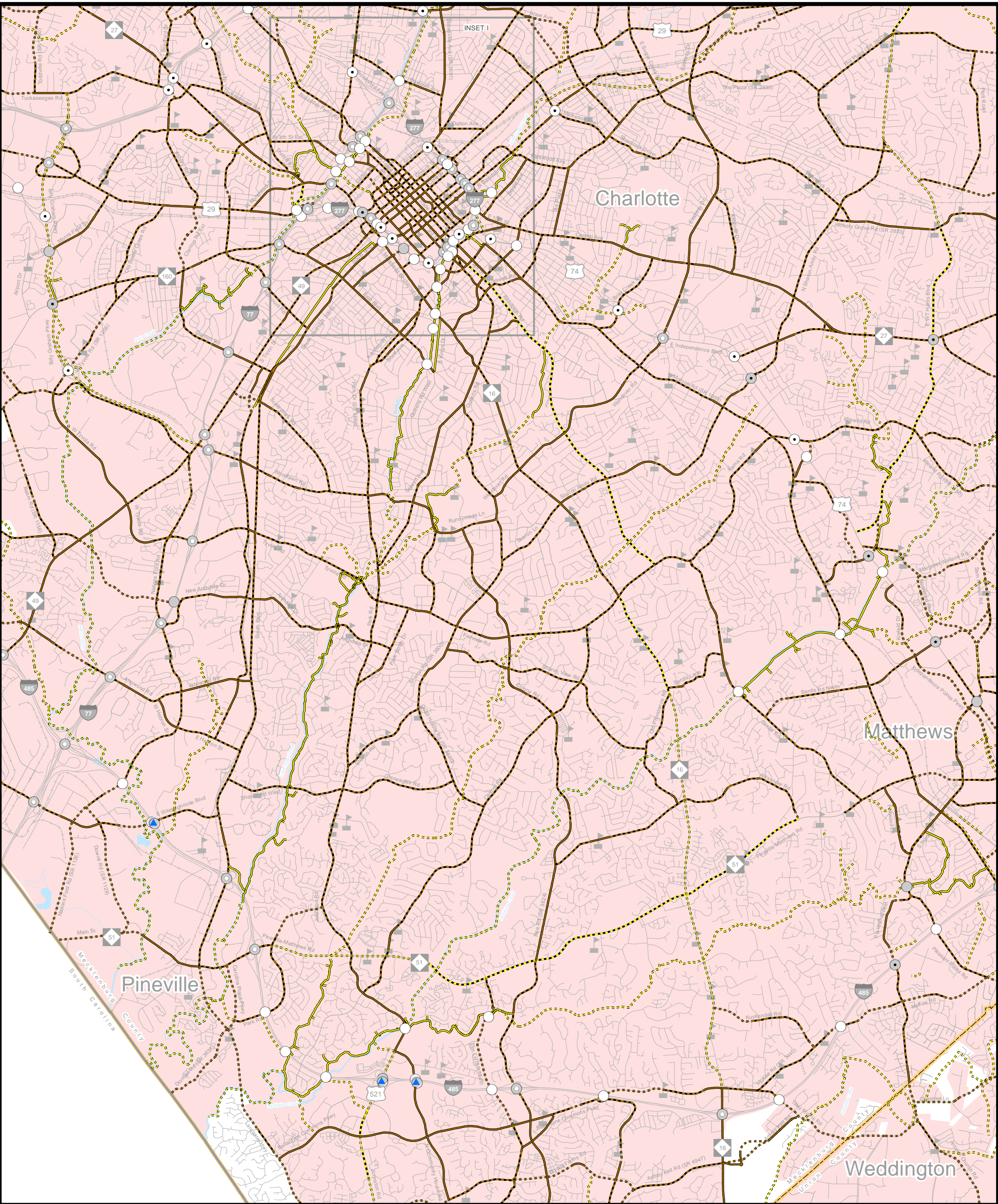
AMENDED

Charlotte Regional Transportation
Planning Organization

North Carolina

Comprehensive
Transportation Plan

Plan date: January 18, 2017
Revision date: October 17, 2018
Revision date(2): January 15, 2020



- Sidewalks**

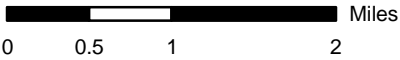
 - Existing
 - Needs Improvement
 - Recommended
- Multi-Use Paths**

 - Existing
 - Needs Improvement
 - Recommended
- Grade Separations**

 - Existing
 - Needs Improvement
 - Recommended
- Interchanges**

 - Existing
 - Needs Improvement
 - Recommended
- Interchanges with Managed Lanes Access**

 - Existing
 - Needs Improvement
 - Recommended



Sheet 5H of 5

Base map date: January 4, 2017

Refer to CTP document for more details

**Pedestrian Map
Inset H**

C RTP
charlotte regional transportation planning organization

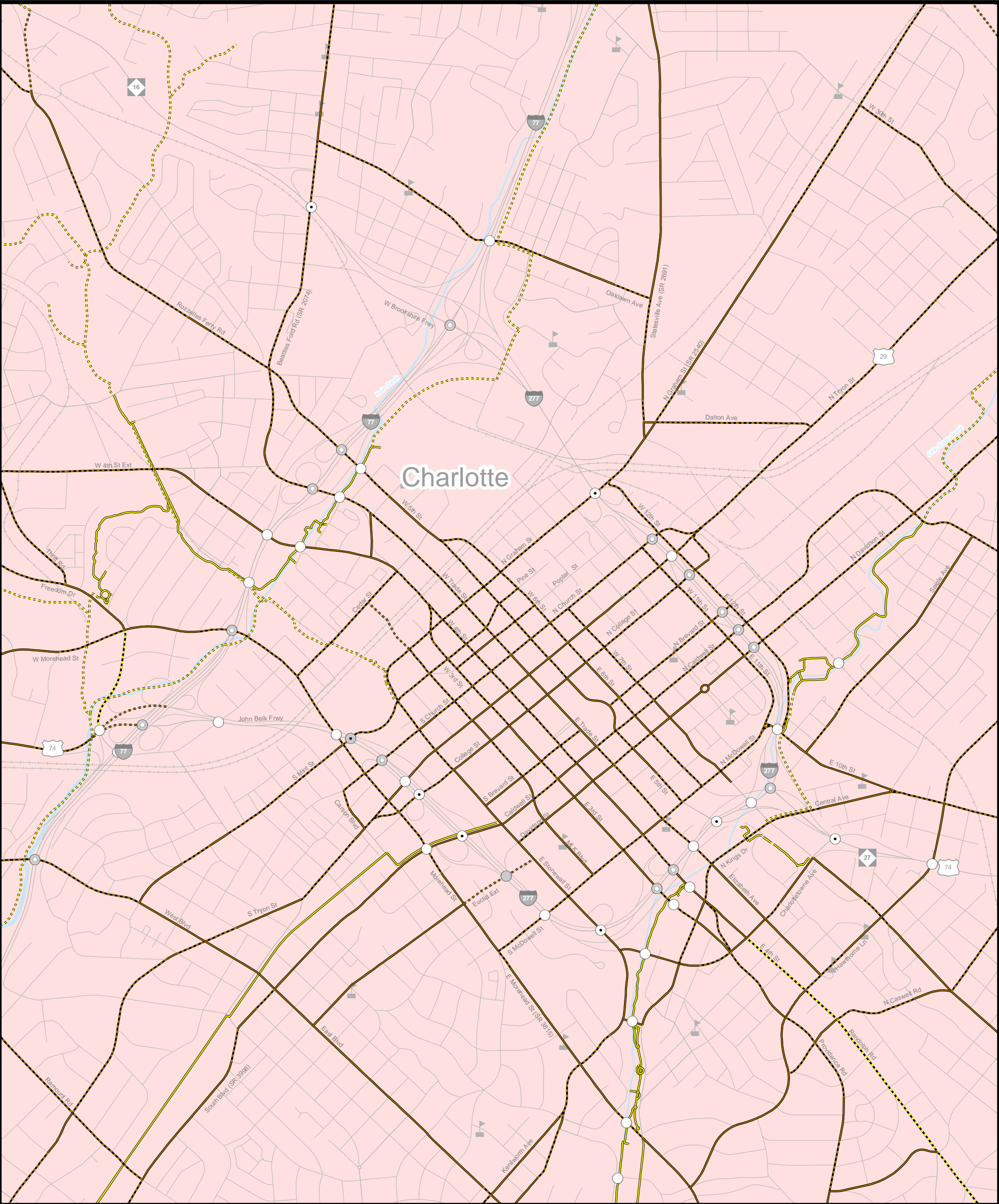
AMENDED

**Charlotte Regional Transportation
Planning Organization**

North Carolina

**Comprehensive
Transportation Plan**

Plan date: January 18, 2017
Revision date: October 17, 2018
Revision date(2): January 15, 2020



- Sidewalks**

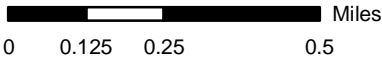
 - Existing
 - Needs Improvement
 - Recommended
- Multi-Use Paths**

 - Existing
 - Needs Improvement
 - Recommended
- Grade Separations**

 - Existing
 - Needs Improvement
 - Recommended
- Interchanges**

 - Existing
 - Needs Improvement
 - Recommended
- Interchanges with Managed Lanes Access**

 - Existing
 - Needs Improvement
 - Recommended



Sheet 5I of 5

Base map date: January 4, 2017

Refer to CTP document for more details

Pedestrian Map Inset I

C RTP
charlotte regional transportation planning organization

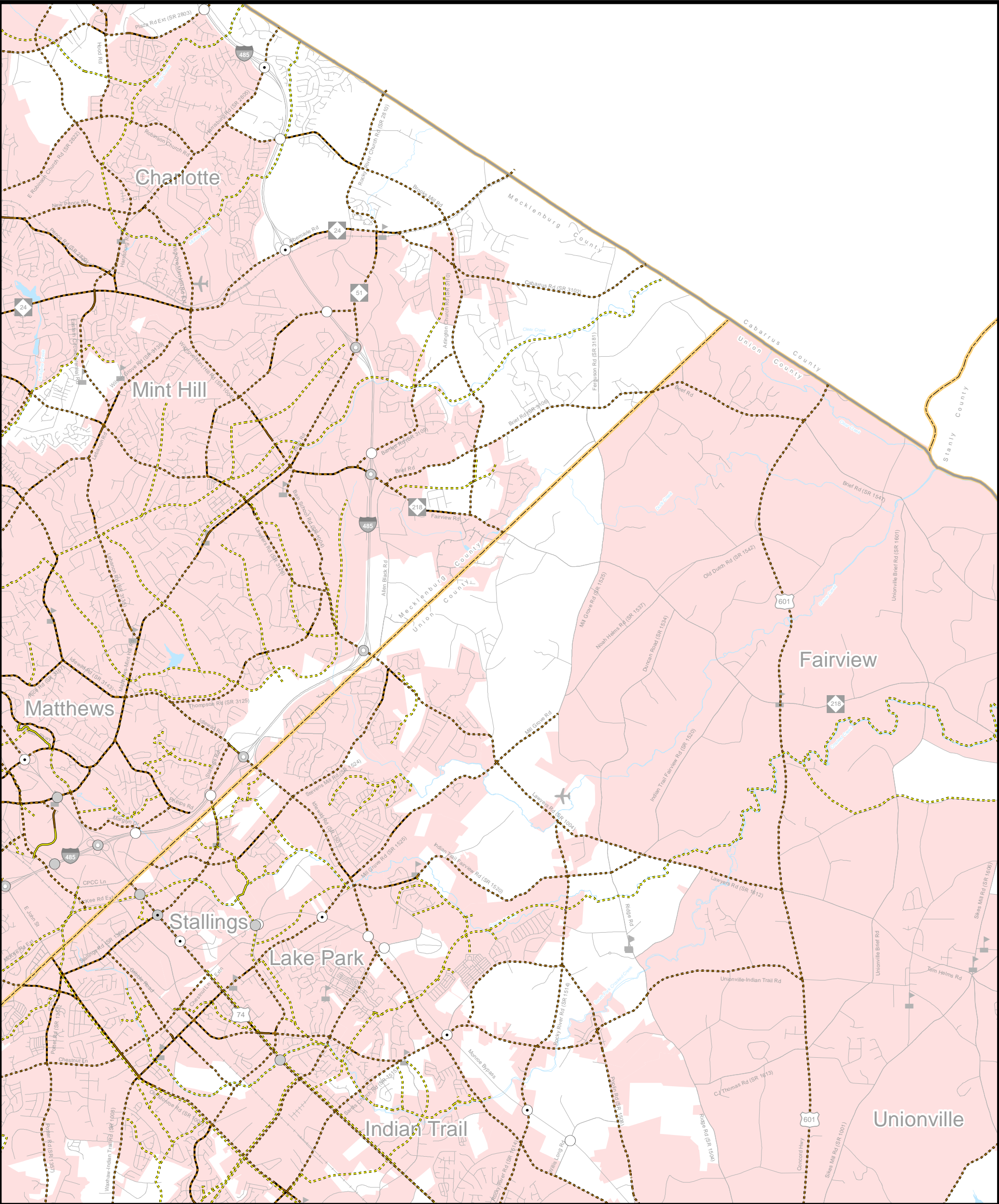
AMENDED

Charlotte Regional Transportation Planning Organization

North Carolina

Comprehensive Transportation Plan

Plan date: January 18, 2017
Revision date: October 17, 2018
Revision date(2): January 15, 2020



Sidewalks

- Existing
- Needs Improvement
- Recommended

Multi-Use Paths

- Existing
- Needs Improvement
- Recommended

Grade Separations

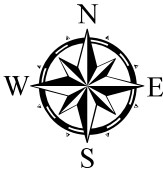
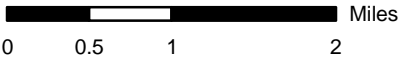
- Existing
- Needs Improvement
- Recommended

Interchanges

- Existing
- Needs Improvement
- Recommended

Interchanges with Managed Lanes Access

- Existing
- Needs Improvement
- Recommended



Sheet 5J of 5

Base map date: January 4, 2017

Refer to CTP document for more details

Pedestrian Map Inset J



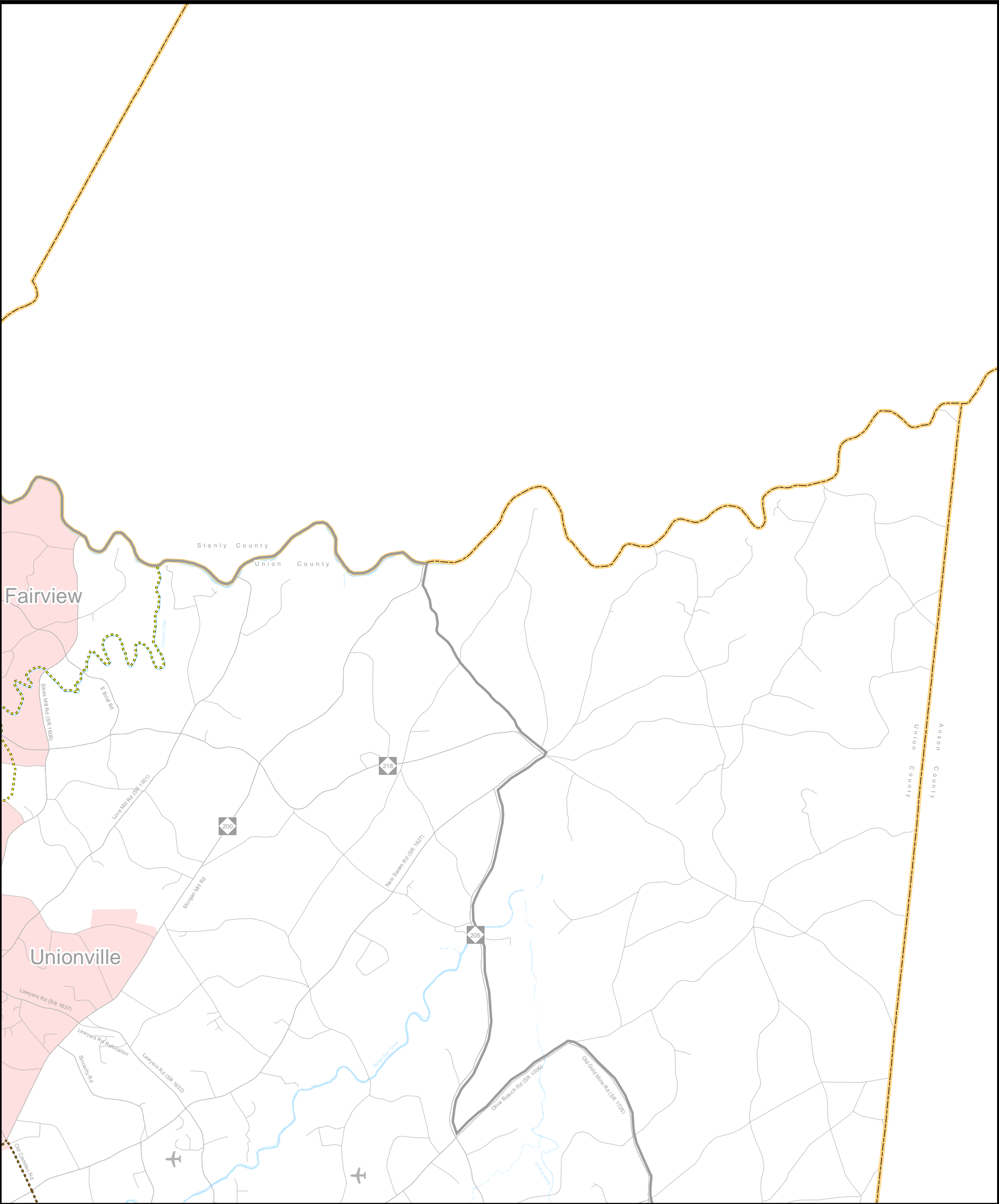
AMENDED

Charlotte Regional Transportation Planning Organization

North Carolina

Comprehensive Transportation Plan

Plan date: January 18, 2017
Revision date: October 17, 2018
Revision date(2): January 15, 2020



Sidewalks

- Existing
- Needs Improvement
- Recommended

Multi-Use Paths

- Existing
- Needs Improvement
- Recommended

Grade Separations

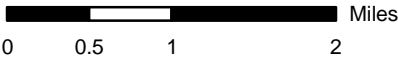
- Existing
- Needs Improvement
- Recommended

Interchanges

- Existing
- Needs Improvement
- Recommended

Interchanges with Managed Lanes Access

- Existing
- Needs Improvement
- Recommended



Sheet 5K of 5

Base map date: January 4, 2017

Refer to CTP document for more details

Pedestrian Map
Inset K



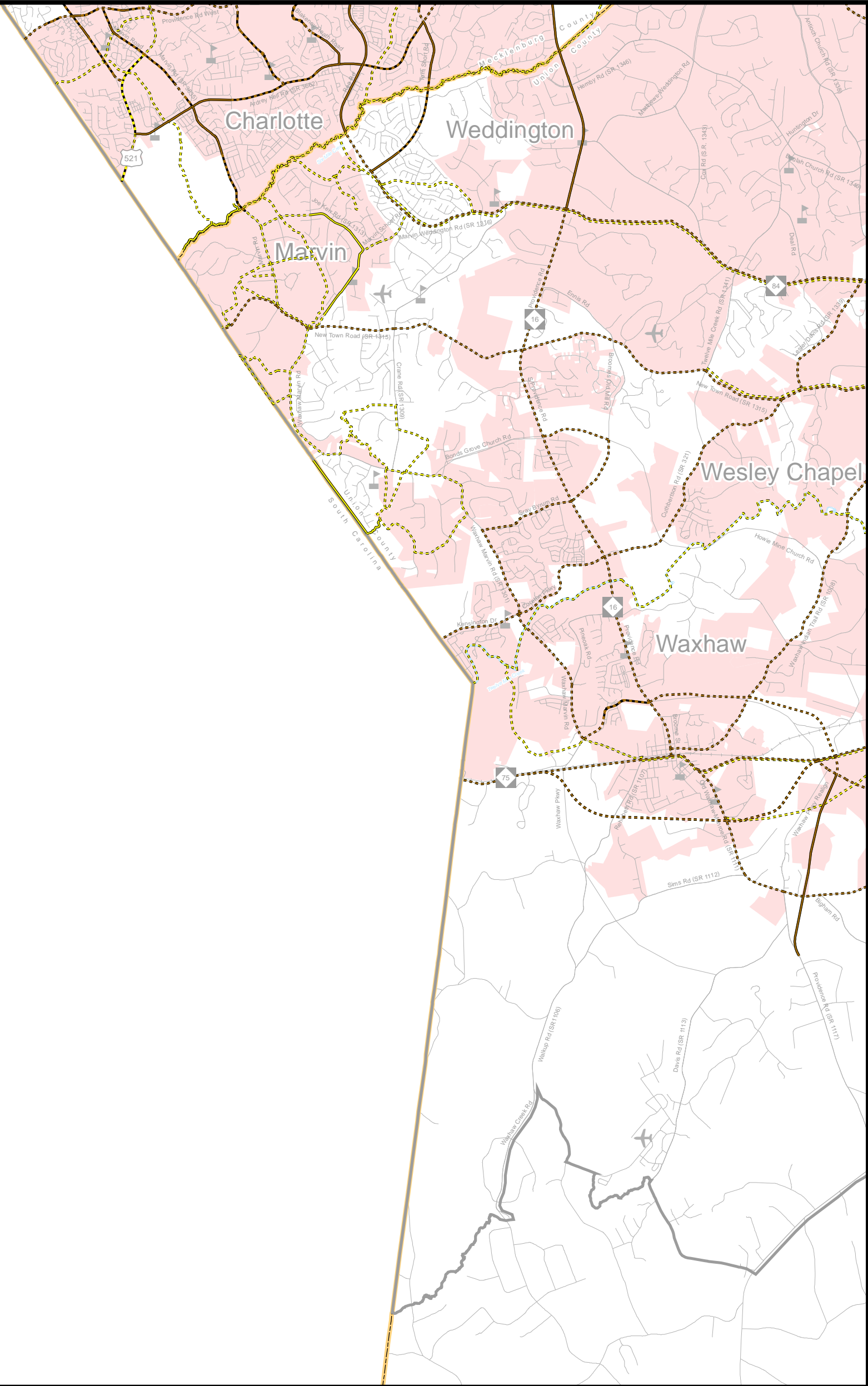
AMENDED

Charlotte Regional Transportation
Planning Organization

North Carolina

Comprehensive
Transportation Plan

Plan date: January 18, 2017
Revision date: October 17, 2018
Revision date(2): January 15, 2020



Sidewalks

Existing

Needs Improvement

Recommended

Multi-Use Paths

Existing

Needs Improvement

Recommended

Grade Separations

Existing

Needs Improvement

Recommended

Interchanges

Existing

Needs Improvement

Recommended

Interchanges with Managed Lanes Access

Existing

Needs Improvement

Recommended

A horizontal scale bar with markings at 0, 0.5, 1, and 2 miles.

A compass rose with a star-like center, indicating North (N), South (S), East (E), and West (W).

Sheet 5L of 5

Base map date: January 4, 2017
Refer to CTP document for more details

Pedestrian Map Inset L

C RTP

charlotte regional transportation planning organization

AMENDED

Charlotte Regional Transportation Planning Organization

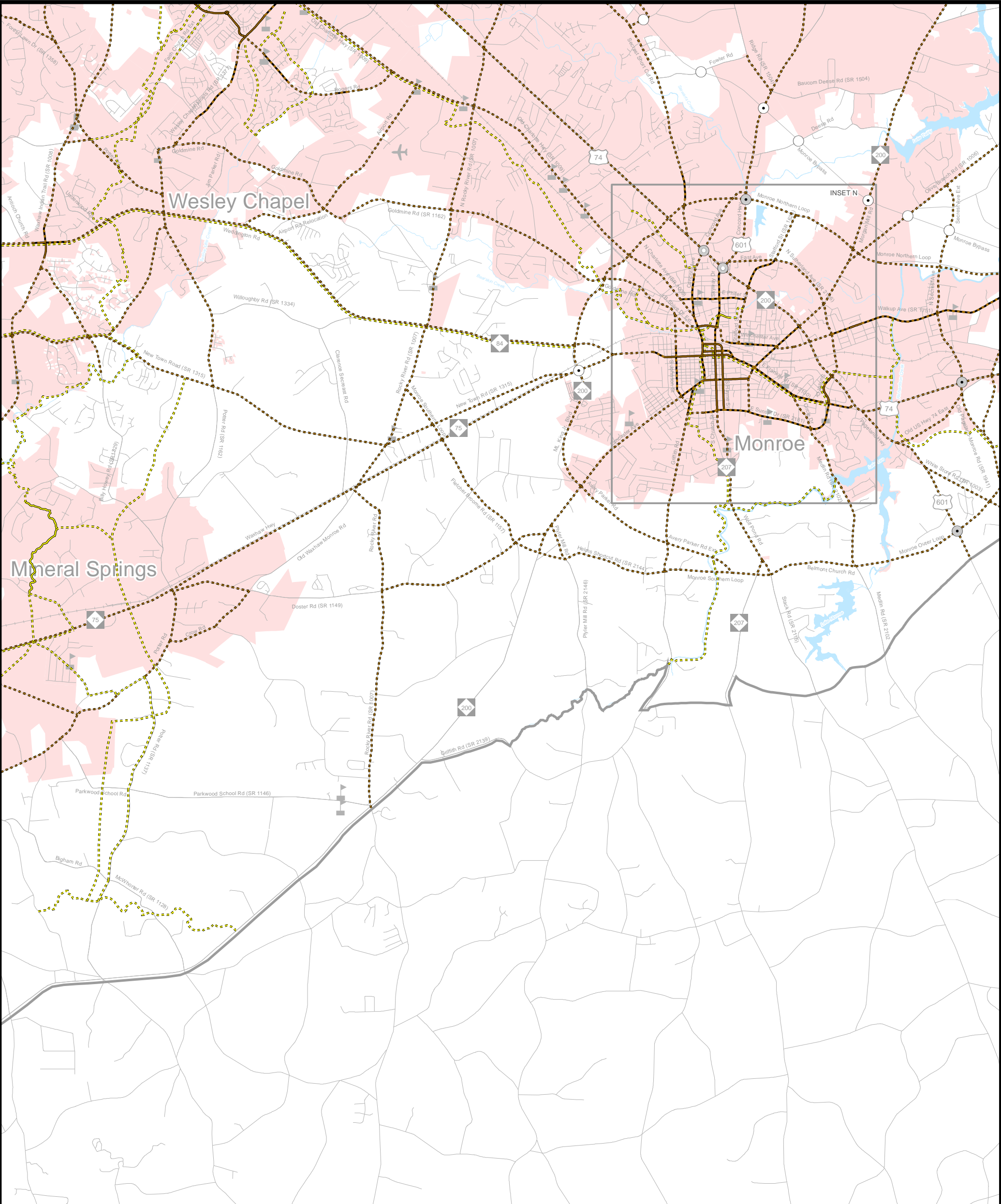
North Carolina

Comprehensive Transportation Plan

Plan date: January 18, 2017

Revision date: October 17, 2018

Revision date(2): January 15, 2020



Sidewalks

- Existing
- Needs Improvement
- Recommended

Multi-Use Paths

- Existing
- Needs Improvement
- Recommended

Grade Separations

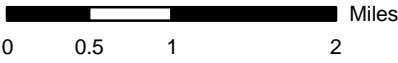
- Existing
- Needs Improvement
- Recommended

Interchanges

- Existing
- Needs Improvement
- Recommended

Interchanges with Managed Lanes Access

- Existing
- Needs Improvement
- Recommended



Sheet 5M of 5

Base map date: January 4, 2017

Refer to CTP document for more details

Pedestrian Map
Inset M



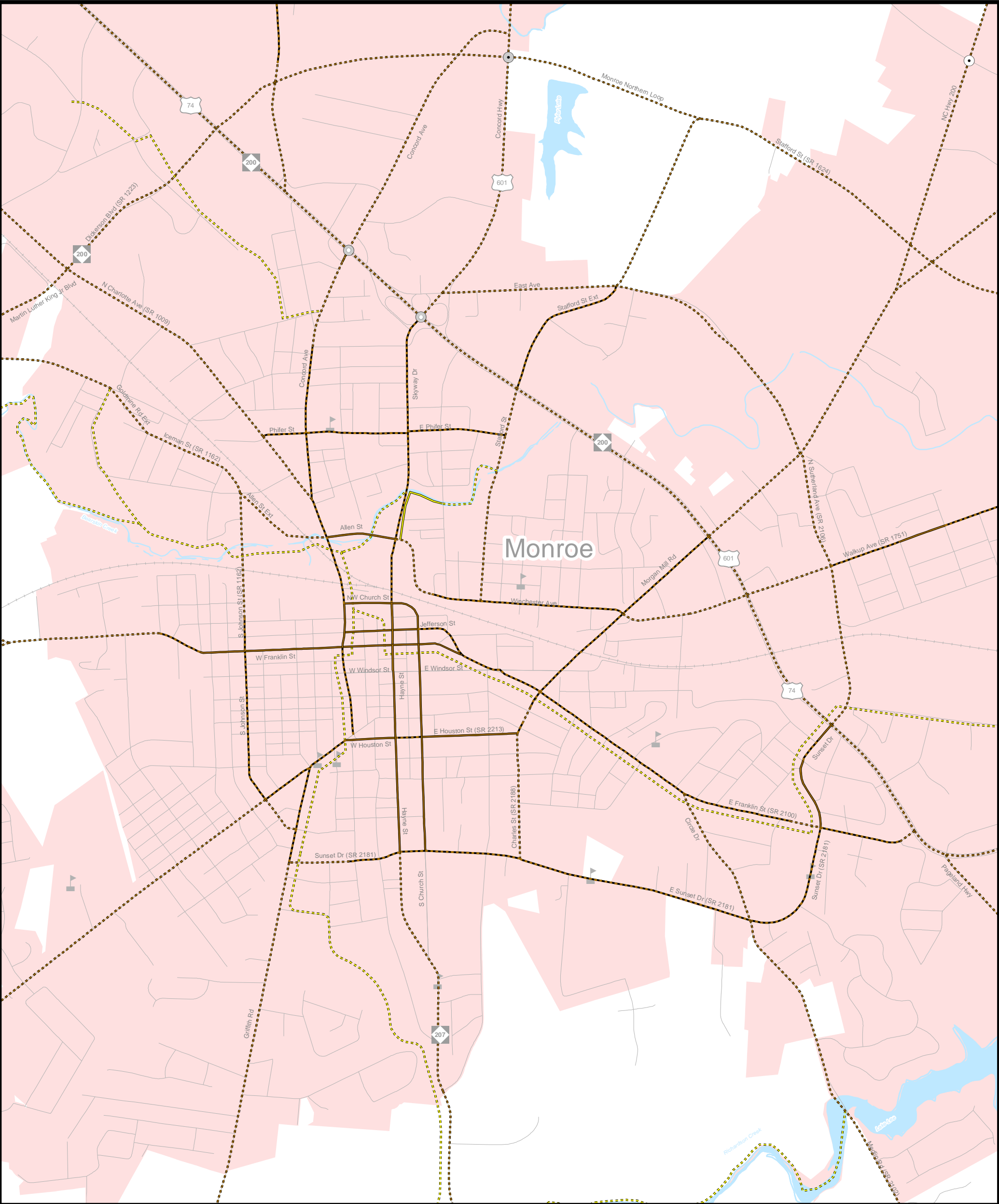
AMENDED

Charlotte Regional Transportation
Planning Organization

North Carolina

Comprehensive
Transportation Plan

Plan date: January 18, 2017
Revision date: October 17, 2018
Revision date(2): January 15, 2020



Sidewalks

Existing

Needs Improvement

Recommended

Multi-Use Paths

Existing

Needs Improvement

Recommended

Grade Separations

Existing

Needs Improvement

Recommended

Interchanges

Existing

Needs Improvement

Recommended

Interchanges with Managed Lanes Access

Existing

Needs Improvement

Recommended

Sheet 5N of 5

Base map date: Janaury 4, 2017
Refer to CTP document for more details

Pedestrian Map
Inset N

C RTP

charlotte regional transportation planning organization

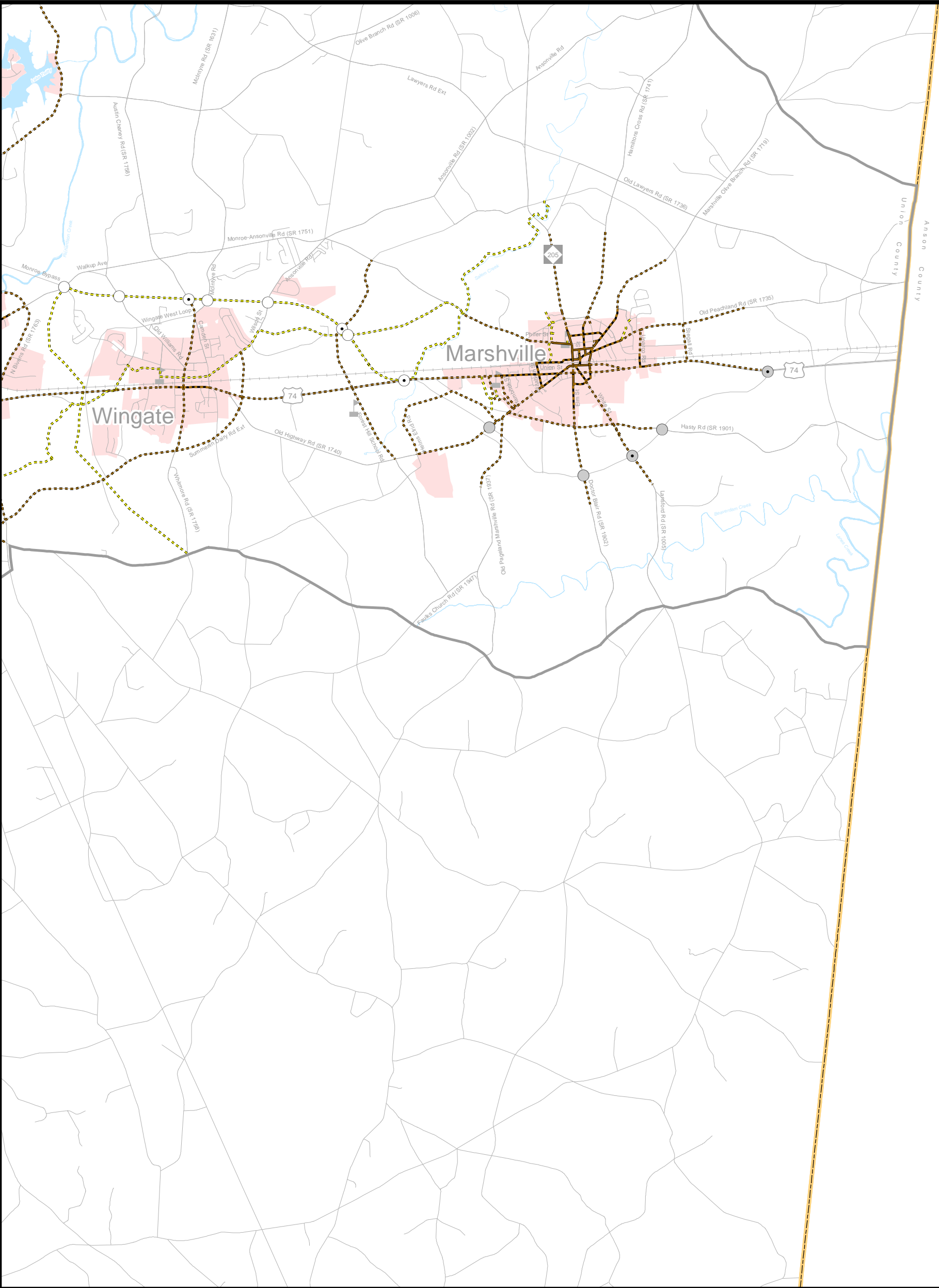
AMENDED

Charlotte Regional Transportation
Planning Organization

North Carolina

Comprehensive
Transportation Plan

Plan date: January 18, 2017
Revision date: October 17, 2018
Revision date(2): January 15, 2020



Sidewalks

- Existing
- Needs Improvement
- Recommended

Multi-Use Paths

- Existing
- Needs Improvement
- Recommended

Grade Separations

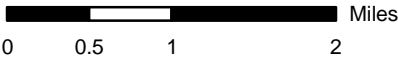
- Existing
- Needs Improvement
- Recommended

Interchanges

- Existing
- Needs Improvement
- Recommended

Interchanges with Managed Lanes Access

- Existing
- Needs Improvement
- Recommended



Sheet 50 of 5

Base map date: January 4, 2017

Refer to CTP document for more details

Pedestrian Map
Inset O



AMENDED

Charlotte Regional Transportation
Planning Organization

North Carolina

Comprehensive
Transportation Plan

Plan date: January 18, 2017
Revision date: October 17, 2018
Revision date(2): January 15, 2020