

<b>High Speed Rail Corridor</b> Existing Recommended	<b>Fixed Guideway</b> Existing Needs Improvement Recommended	<b>Rail Corridor</b> Active Inactive Recommended
<b>Operational Strategies</b> Existing Needs Improvement Recommended	<b>Stations</b> Existing Needs Improvement Recommended	<b>Stations with Park and Ride Lot</b> Existing Needs Improvement Recommended
<b>Bus Park and Ride Lot</b> Existing Needs Improvement Recommended	<b>Intermodal Connector</b> Existing Recommended	
<b>Grade Separations</b> Existing Needs Improvement Recommended	<b>Interchanges</b> Existing Needs Improvement Recommended	<b>Interchanges with Managed Lanes Access</b> Existing Needs Improvement Recommended

03612

Miles

N

W

E

S

Sheet 3 of 5

Base map date: January 4, 2017

Refer to CTP document for more details

Public Transportation and Rail Map

C RTP

charlotte regional transportation planning organization

AMENDED

Charlotte Regional Transportation Planning Organization

North Carolina

Comprehensive Transportation Plan

Plan date: January 18, 2017

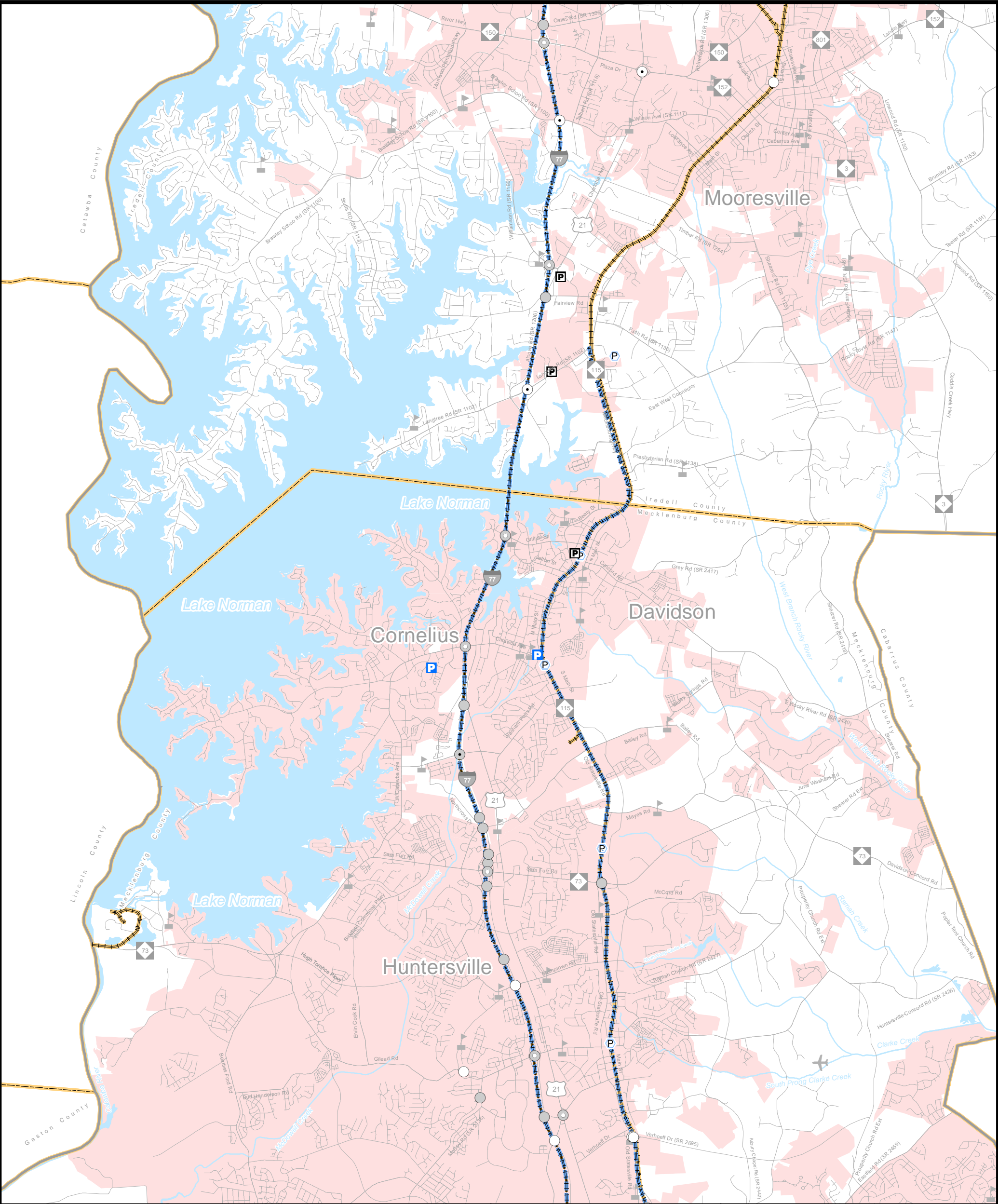
Revision date: October 17, 2018

Revision date(2): January 15, 2020









<b>High Speed Rail Corridor</b> Existing Recommended	<b>Fixed Guideway</b> Existing Needs Improvement Recommended	<b>Rail Corridor</b> Active Inactive Recommended
<b>Operational Strategies</b> Existing Needs Improvement Recommended	<b>Stations</b> Existing Needs Improvement Recommended	<b>Stations with Park and Ride Lot</b> Existing Needs Improvement Recommended
<b>Bus Park and Ride Lot</b> Existing Needs Improvement Recommended	<b>Intermodal Connector</b> Existing Recommended	<b>Interchanges with Managed Lanes Access</b> Existing Needs Improvement Recommended
<b>Grade Separations</b> Existing Needs Improvement Recommended	<b>Interchanges</b> Existing Needs Improvement Recommended	

0

0.5

1

2

Miles

N

W

E

S

Sheet 3B of 5

Base map date: January 4, 2017

Refer to CTP document for more details

Public Transportation and Rail Map Inset B

C RTP

charlotte regional transportation planning organization

AMENDED

Charlotte Regional Transportation Planning Organization

North Carolina

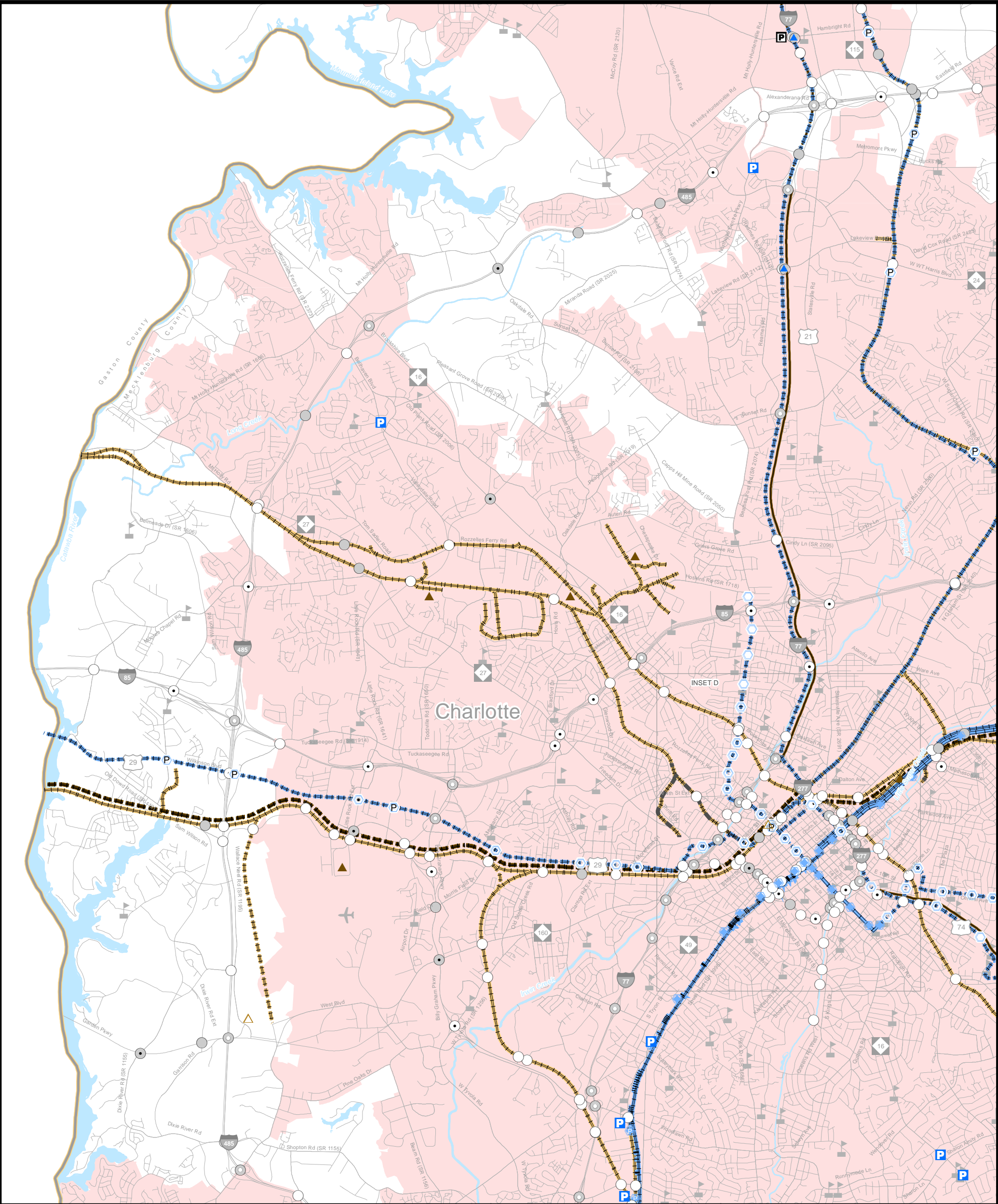
Comprehensive Transportation Plan

Plan date: January 18, 2017

Revision date: October 17, 2018

Revision date(2): January 15, 2020





<b>High Speed Rail Corridor</b> Existing Recommended	<b>Fixed Guideway</b> Existing Needs Improvement Recommended	<b>Rail Corridor</b> Active Inactive Recommended
<b>Operational Strategies</b> Existing Needs Improvement Recommended	<b>Stations</b> Existing Needs Improvement Recommended	<b>Stations with Park and Ride Lot</b> Existing Needs Improvement Recommended
<b>Bus Park and Ride Lot</b> Existing Needs Improvement Recommended	<b>Intermodal Connector</b> Existing Recommended	<b>Interchanges with Managed Lanes Access</b> Existing Needs Improvement Recommended
<b>Grade Separations</b> Existing Needs Improvement Recommended	<b>Interchanges</b> Existing Needs Improvement Recommended	

00.512Miles

N

W

E

S

Sheet 3C of 5

Base map date: January 4, 2017

Refer to CTP document for more details

Public Transportation and Rail Map Inset C

CRTPO

charlotte regional transportation planning organization

AMENDED

Charlotte Regional Transportation Planning Organization

North Carolina

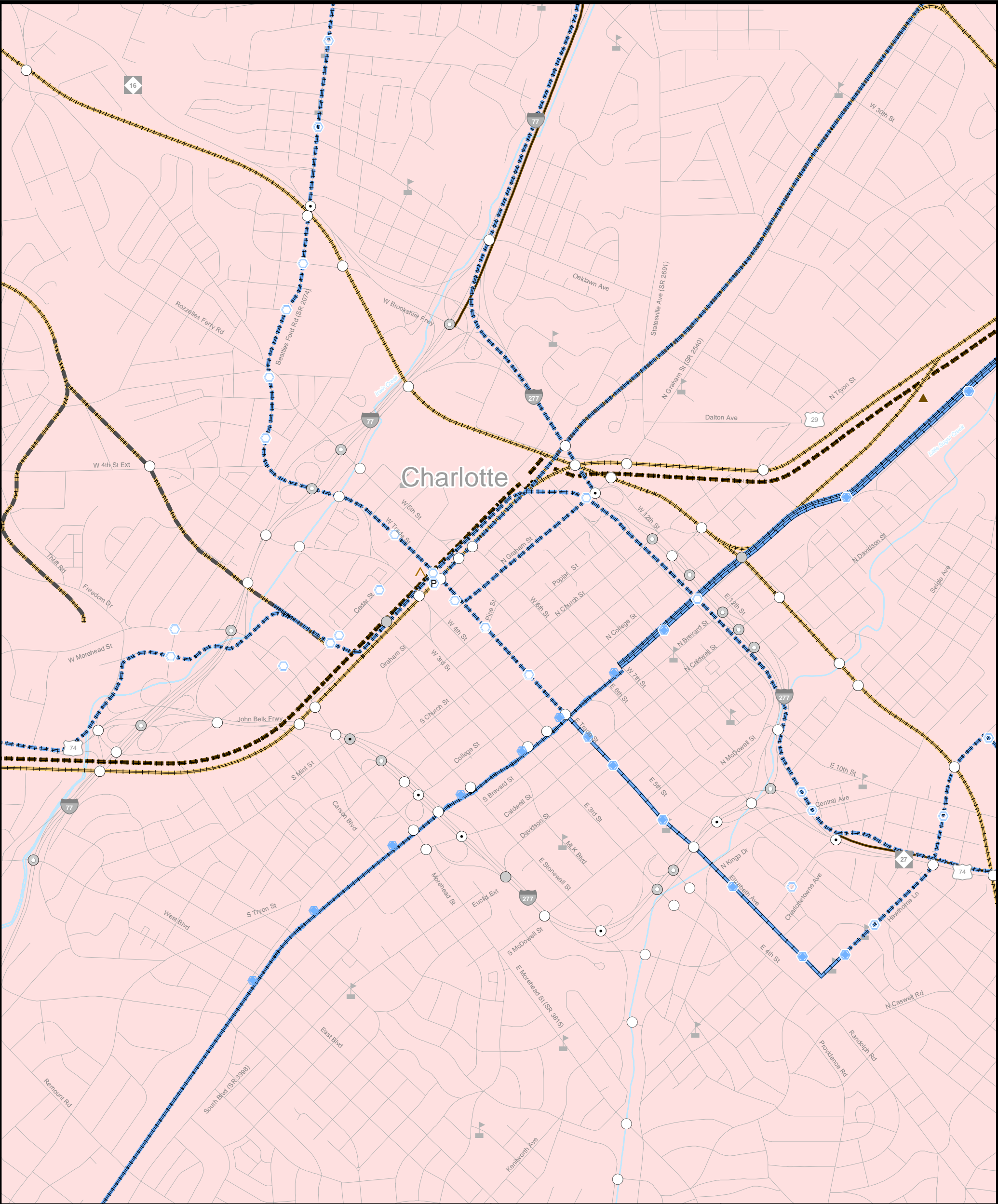
Comprehensive Transportation Plan

Plan date: January 18, 2017

Revision date: October 17, 2018

Revision date(2): January 15, 2020





<b>High Speed Rail Corridor</b> Existing Recommended	<b>Fixed Guideway</b> Existing Needs Improvement Recommended	<b>Rail Corridor</b> Active Inactive Recommended
<b>Operational Strategies</b> Existing Needs Improvement Recommended	<b>Stations</b> Existing Needs Improvement Recommended	<b>Stations with Park and Ride Lot</b> Existing Needs Improvement Recommended
<b>Bus Park and Ride Lot</b> Existing Needs Improvement Recommended	<b>Intermodal Connector</b> Existing Recommended	
<b>Grade Separations</b> Existing Needs Improvement Recommended	<b>Interchanges</b> Existing Needs Improvement Recommended	<b>Interchanges with Managed Lanes Access</b> Existing Needs Improvement Recommended

00.1250.250.5

Miles

N

W

E

S

Sheet 3D of 5

Base map date: January 4, 2017

Refer to CTP document for more details

Public Transportation and Rail Map Inset D

CRTPO

charlotte regional transportation planning organization

AMENDED

Charlotte Regional Transportation Planning Organization

North Carolina

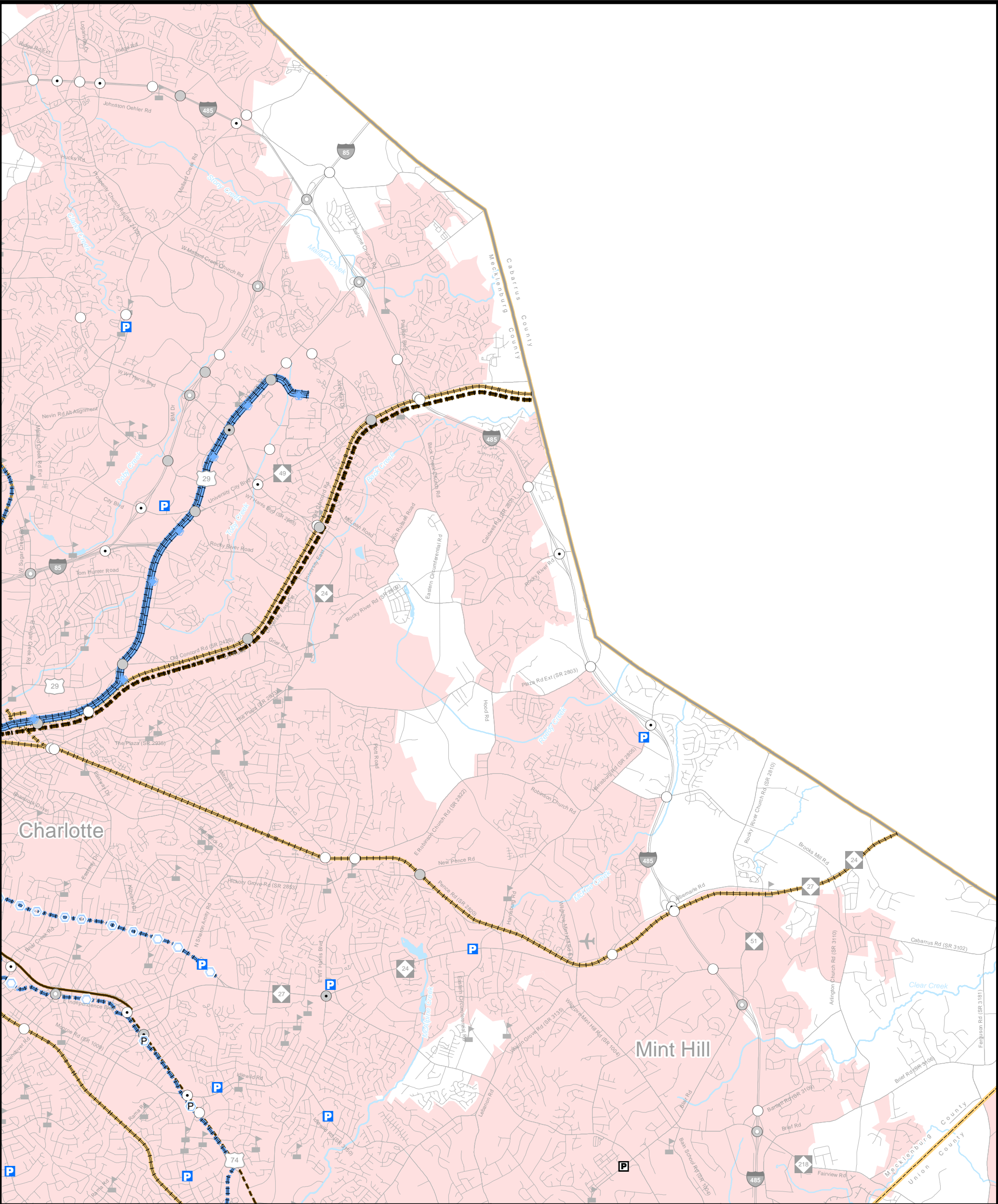
Comprehensive Transportation Plan

Plan date: January 18, 2017

Revision date: October 17, 2018

Revision date(2): January 15, 2020





<b>High Speed Rail Corridor</b> Existing Recommended	<b>Fixed Guideway</b> Existing Needs Improvement Recommended	<b>Rail Corridor</b> Active Inactive Recommended
<b>Operational Strategies</b> Existing Needs Improvement Recommended	<b>Stations</b> Existing Needs Improvement Recommended	<b>Stations with Park and Ride Lot</b> Existing Needs Improvement Recommended
<b>Bus Park and Ride Lot</b> Existing Needs Improvement Recommended	<b>Intermodal Connector</b> Existing Recommended	
<b>Grade Separations</b> Existing Needs Improvement Recommended	<b>Interchanges</b> Existing Needs Improvement Recommended	<b>Interchanges with Managed Lanes Access</b> Existing Needs Improvement Recommended

00.512

Miles

N

W

E

S

Sheet 3E of 5

Base map date: January 4, 2017

Refer to CTP document for more details

Public Transportation and Rail Map Inset E

C RTP

charlotte regional transportation planning organization

AMENDED

Charlotte Regional Transportation Planning Organization

North Carolina

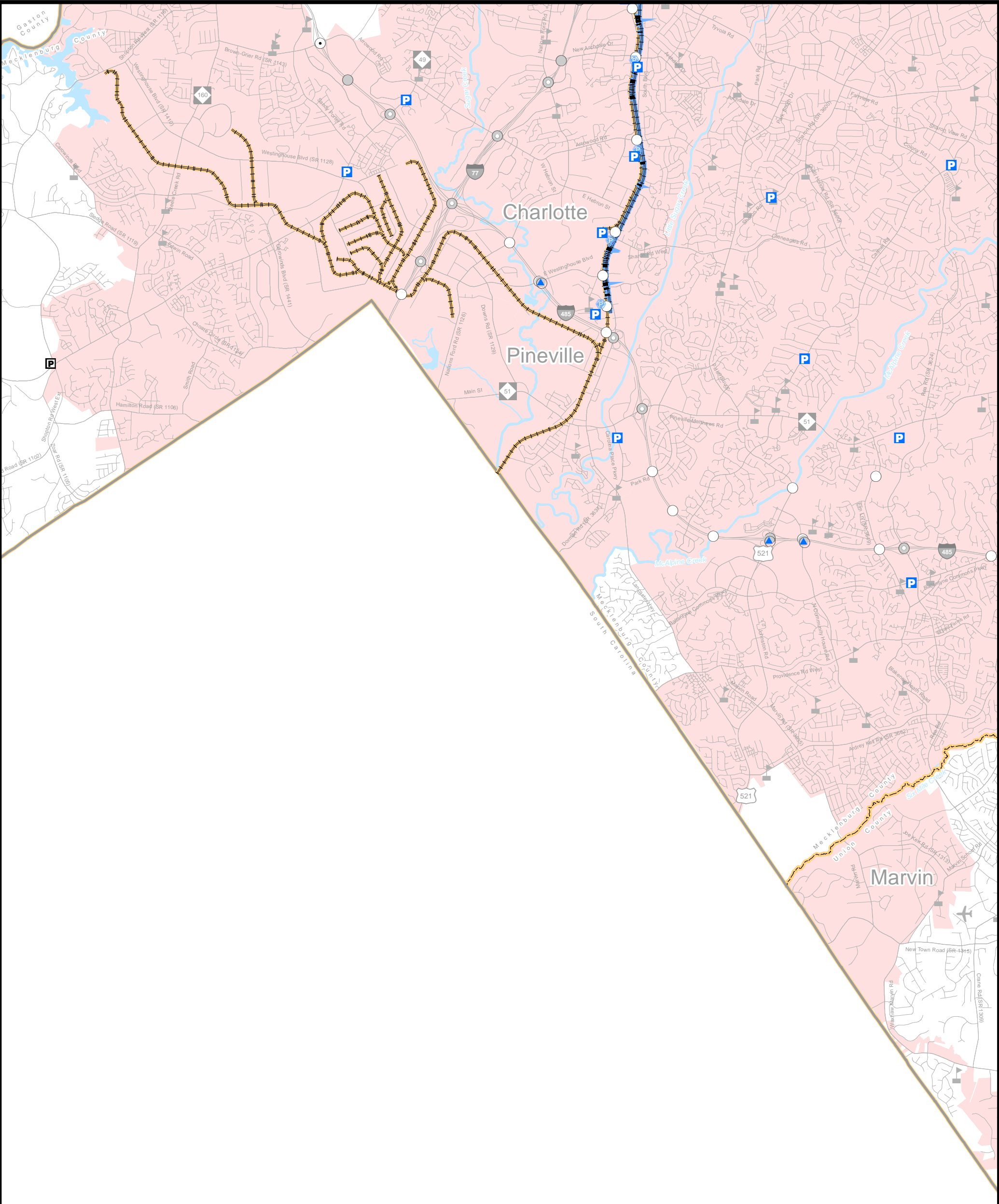
Comprehensive Transportation Plan

Plan date: January 18, 2017

Revision date: October 17, 2018

Revision date(2): January 15, 2020





<b>High Speed Rail Corridor</b> Existing Recommended	<b>Fixed Guideway</b> Existing Needs Improvement Recommended	<b>Rail Corridor</b> Active Inactive Recommended
<b>Operational Strategies</b> Existing Needs Improvement Recommended	<b>Stations</b> Existing Needs Improvement Recommended	<b>Stations with Park and Ride Lot</b> Existing Needs Improvement Recommended
<b>Bus Park and Ride Lot</b> Existing Needs Improvement Recommended	<b>Intermodal Connector</b> Existing Recommended	
<b>Grade Separations</b> Existing Needs Improvement Recommended	<b>Interchanges</b> Existing Needs Improvement Recommended	<b>Interchanges with Managed Lanes Access</b> Existing Needs Improvement Recommended

00.512Miles

N

W

E

S

Sheet 3F of 5

Base map date: January 4, 2017

Refer to CTP document for more details

Public Transportation and Rail Map Inset F

CRTPO

charlotte regional transportation planning organization

AMENDED

Charlotte Regional Transportation Planning Organization

North Carolina

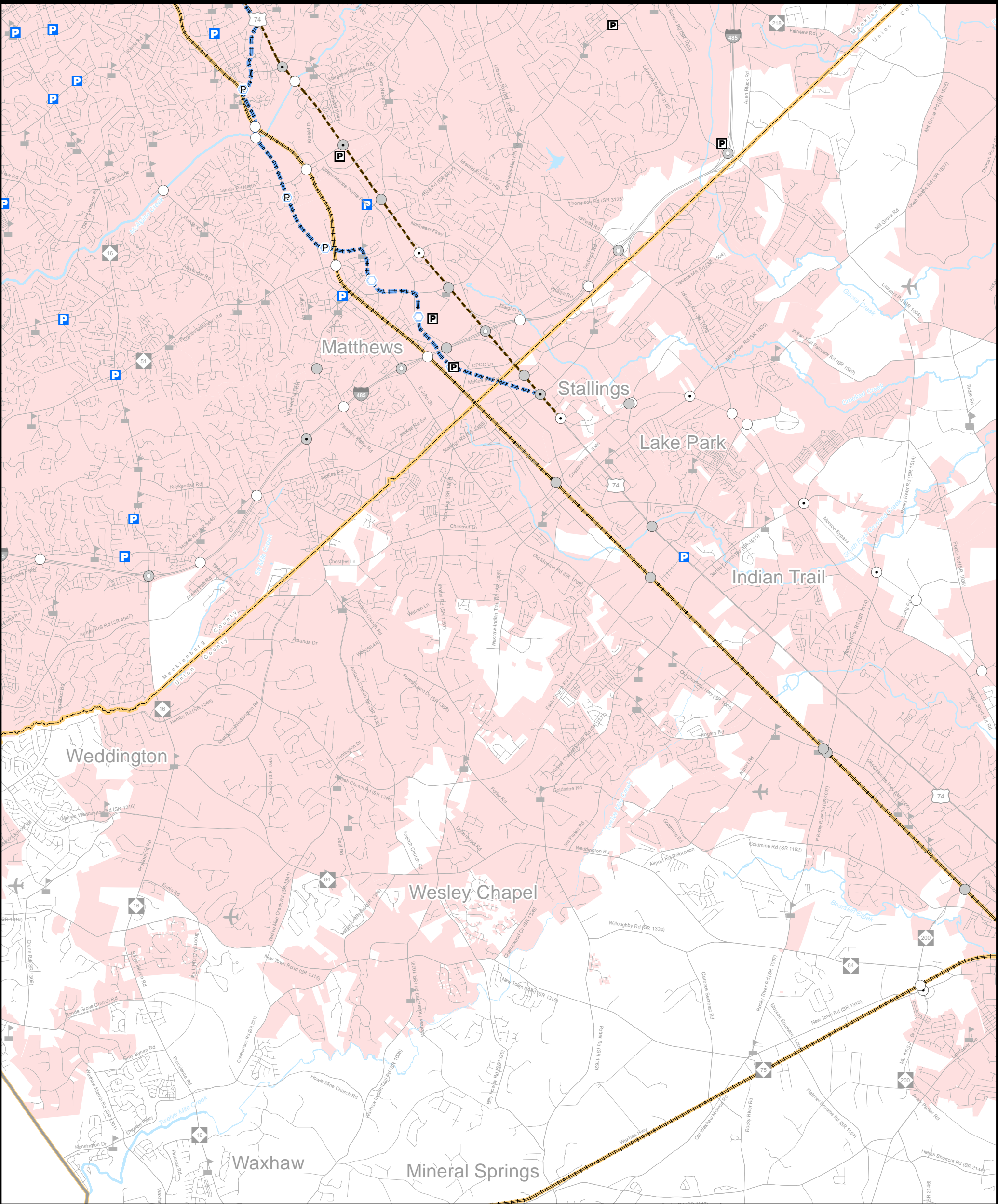
Comprehensive Transportation Plan

Plan date: January 18, 2017

Revision date: October 17, 2018

Revision date(2): January 15, 2020





<b>High Speed Rail Corridor</b> Existing Recommended	<b>Fixed Guideway</b> Existing Needs Improvement Recommended	<b>Rail Corridor</b> Active Inactive Recommended
<b>Operational Strategies</b> Existing Needs Improvement Recommended	<b>Stations</b> Existing Needs Improvement Recommended	<b>Stations with Park and Ride Lot</b> Existing Needs Improvement Recommended
<b>Bus Park and Ride Lot</b> Existing Needs Improvement Recommended	<b>Intermodal Connector</b> Existing Recommended	<b>Interchanges with Managed Lanes Access</b> Existing Needs Improvement Recommended
<b>Grade Separations</b> Existing Needs Improvement Recommended	<b>Interchanges</b> Existing Needs Improvement Recommended	

00.512

Miles

N

W

E

S

Sheet 3G of 5

Base map date: January 4, 2017

Refer to CTP document for more details

Public Transportation and Rail Map Inset G

CRTPO

charlotte regional transportation planning organization

AMENDED

Charlotte Regional Transportation Planning Organization

North Carolina

Comprehensive Transportation Plan

Plan date: January 18, 2017

Revision date: October 17, 2018

Revision date(2): January 15, 2020