

Sidewalks

- Existing
- Needs Improvement
- Recommended

Multi-Use Paths

- Existing
- Needs Improvement
- Recommended

Grade Separations

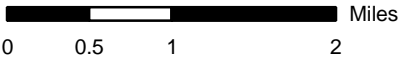
- Existing
- Needs Improvement
- Recommended

Interchanges

- Existing
- Needs Improvement
- Recommended

Interchanges with Managed Lanes Access

- Existing
- Needs Improvement
- Recommended



Sheet 5A of 5

Base map date: January 4, 2017

Refer to CTP document for more details

Pedestrian Map

Inset A

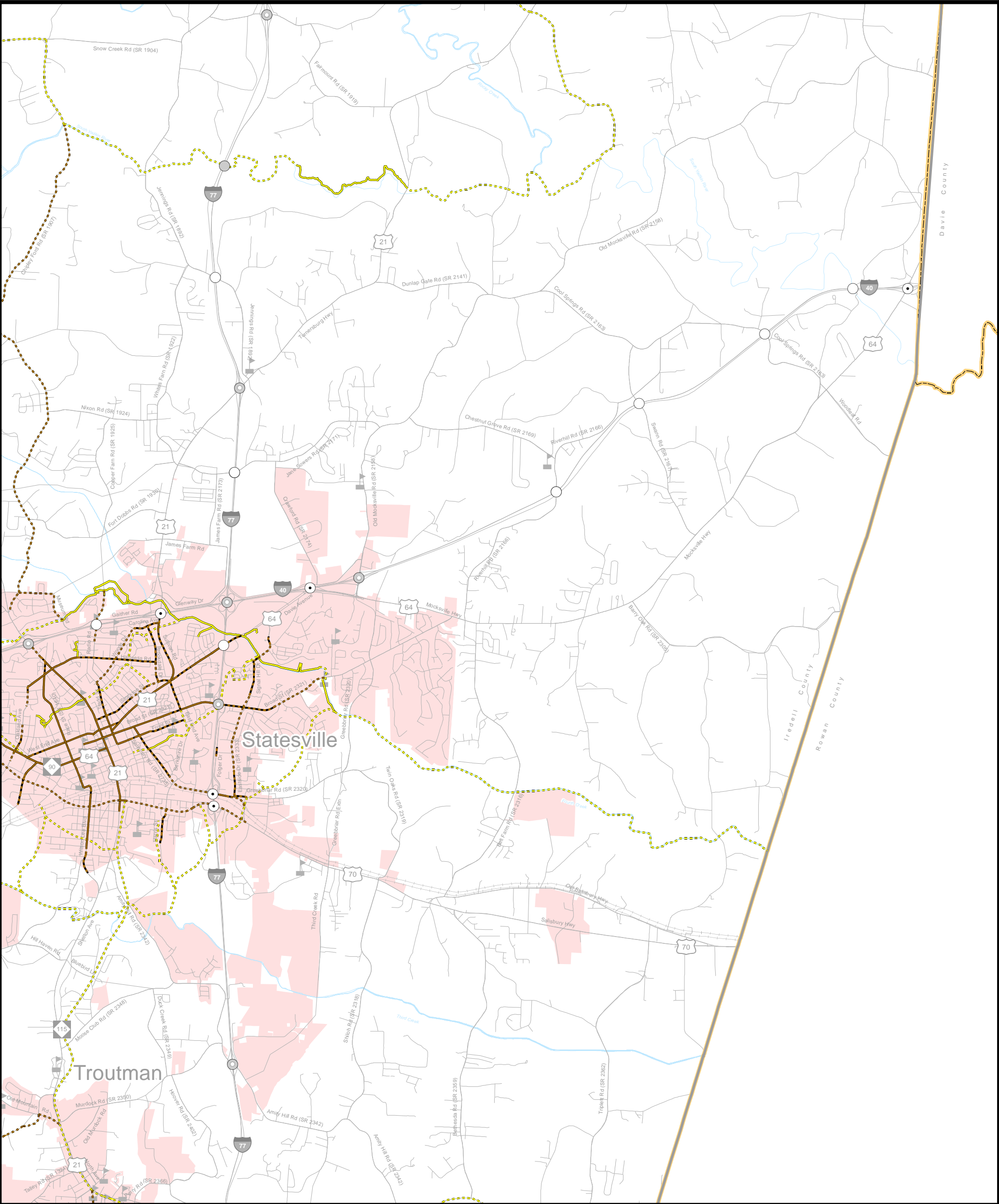
CRTPO
charlotte regional transportation planning organization

Charlotte Regional Transportation Planning Organization

North Carolina

Comprehensive Transportation Plan

Plan date: January 18, 2017



Sidewalks

- Existing
- Needs Improvement
- Recommended

Multi-Use Paths

- Existing
- Needs Improvement
- Recommended

Grade Separations

- Existing
- Needs Improvement
- Recommended

Interchanges

- Existing
- Needs Improvement
- Recommended

Interchanges with Managed Lanes Access

- Existing
- Needs Improvement
- Recommended



Sheet 5B of 5

Base map date: January 4, 2017

Refer to CTP document for more details

Pedestrian Map

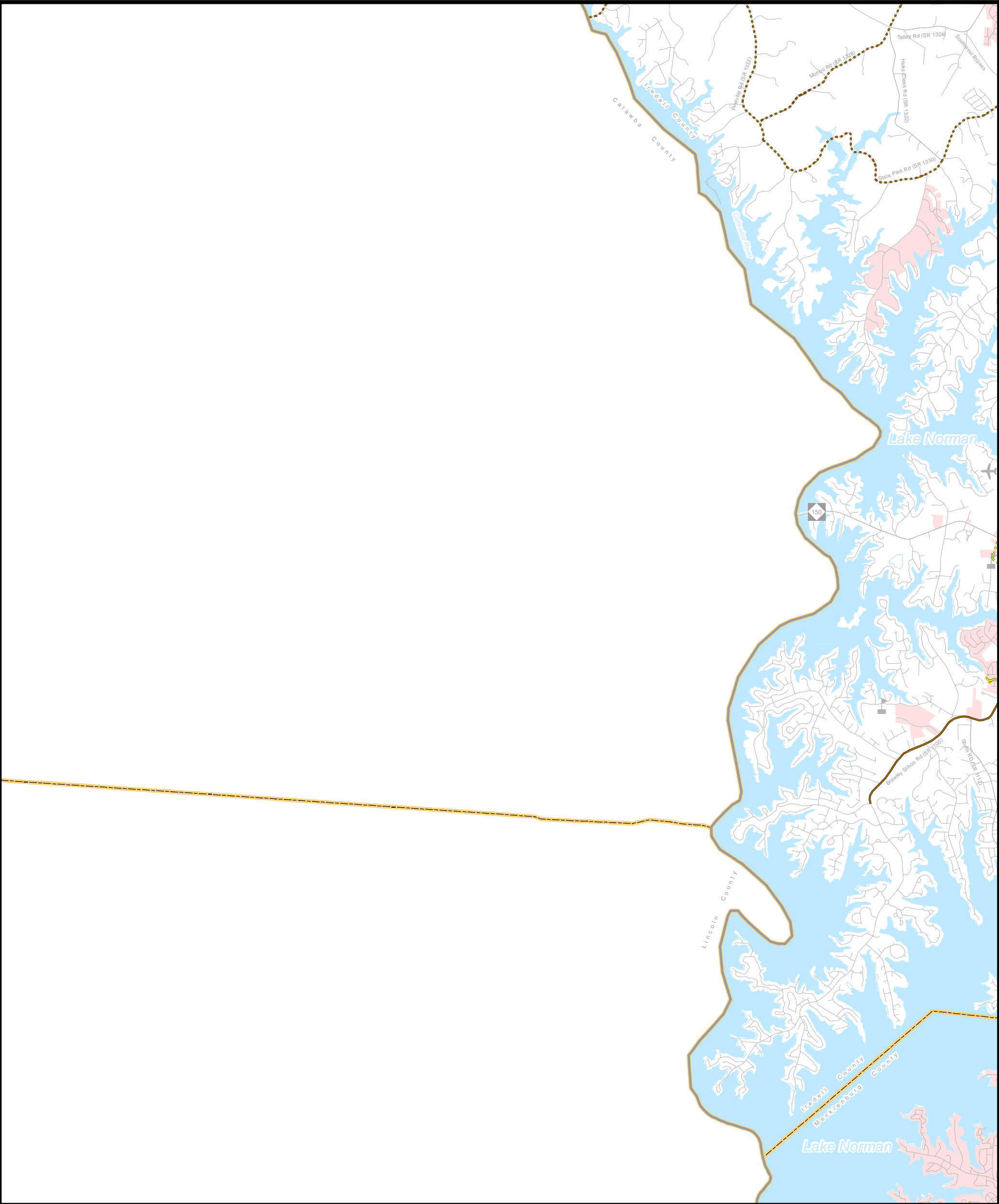
Inset B



Charlotte Regional Transportation Planning Organization
North Carolina

Comprehensive Transportation Plan

Plan date: January 18, 2017



Sidewalks

Existing

Needs Improvement

Recommended

Multi-Use Paths

Existing

Needs Improvement

Recommended

Grade Separations

Existing

Needs Improvement

Recommended

Interchanges

Existing

Needs Improvement

Recommended

Interchanges with Managed Lanes Access

Existing

Needs Improvement

Recommended

Sheet 5C of 5

Base map date: January 4, 2017

Refer to CTP document for more details

Pedestrian Map

Inset C

CRTPO

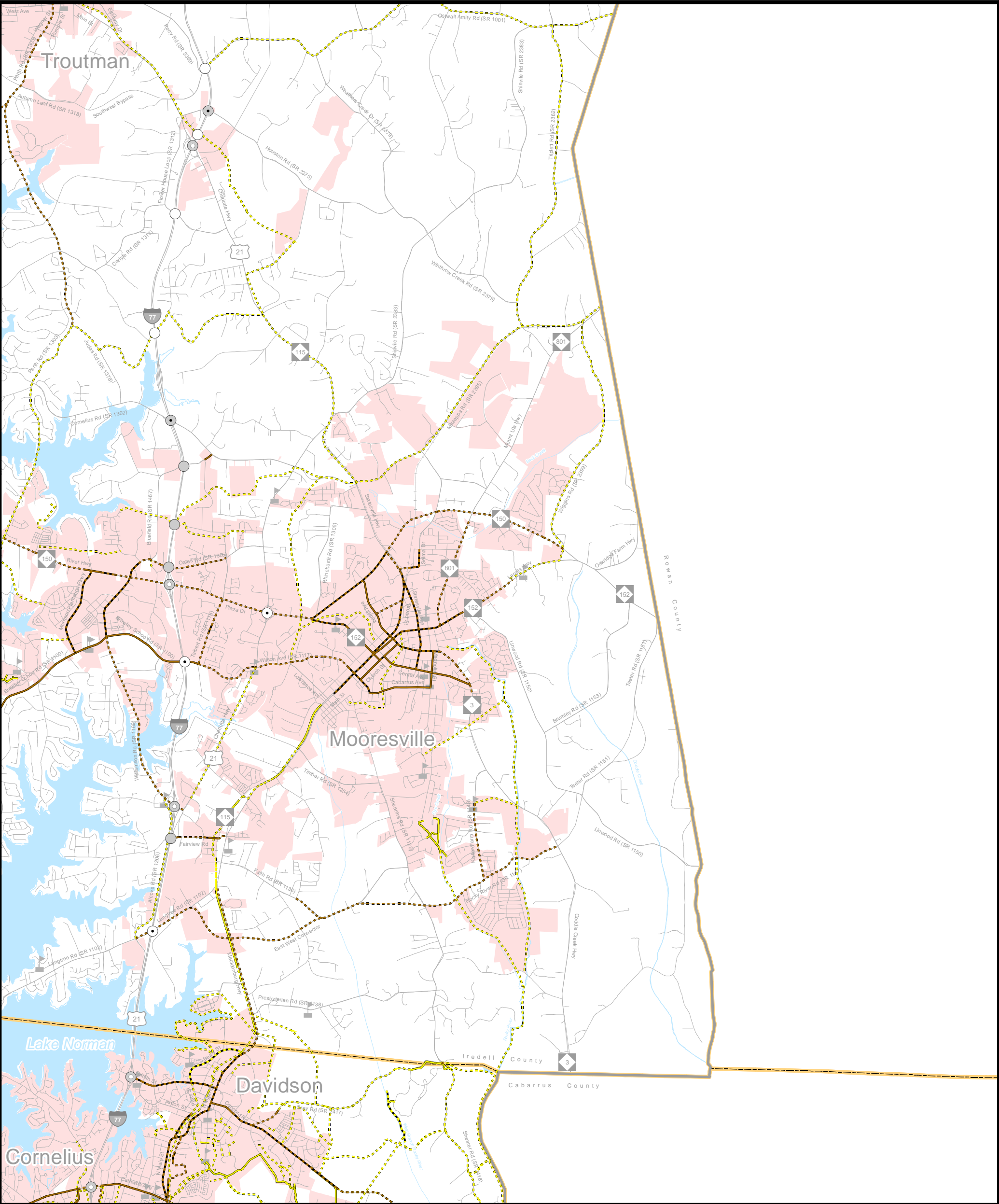
charlotte regional transportation planning organization

Charlotte Regional Transportation Planning Organization

North Carolina

Comprehensive Transportation Plan

Plan date: January 18, 2017



- Sidewalks**

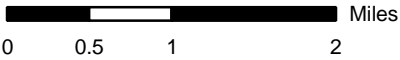
 - Existing
 - Needs Improvement
 - Recommended
- Multi-Use Paths**

 - Existing
 - Needs Improvement
 - Recommended
- Grade Separations**

 - Existing
 - Needs Improvement
 - Recommended
- Interchanges**

 - Existing
 - Needs Improvement
 - Recommended
- Interchanges with Managed Lanes Access**

 - Existing
 - Needs Improvement
 - Recommended



Sheet 5D of 5

Base map date: January 4, 2017

Refer to CTP document for more details

Pedestrian Map

Inset D

C RTP

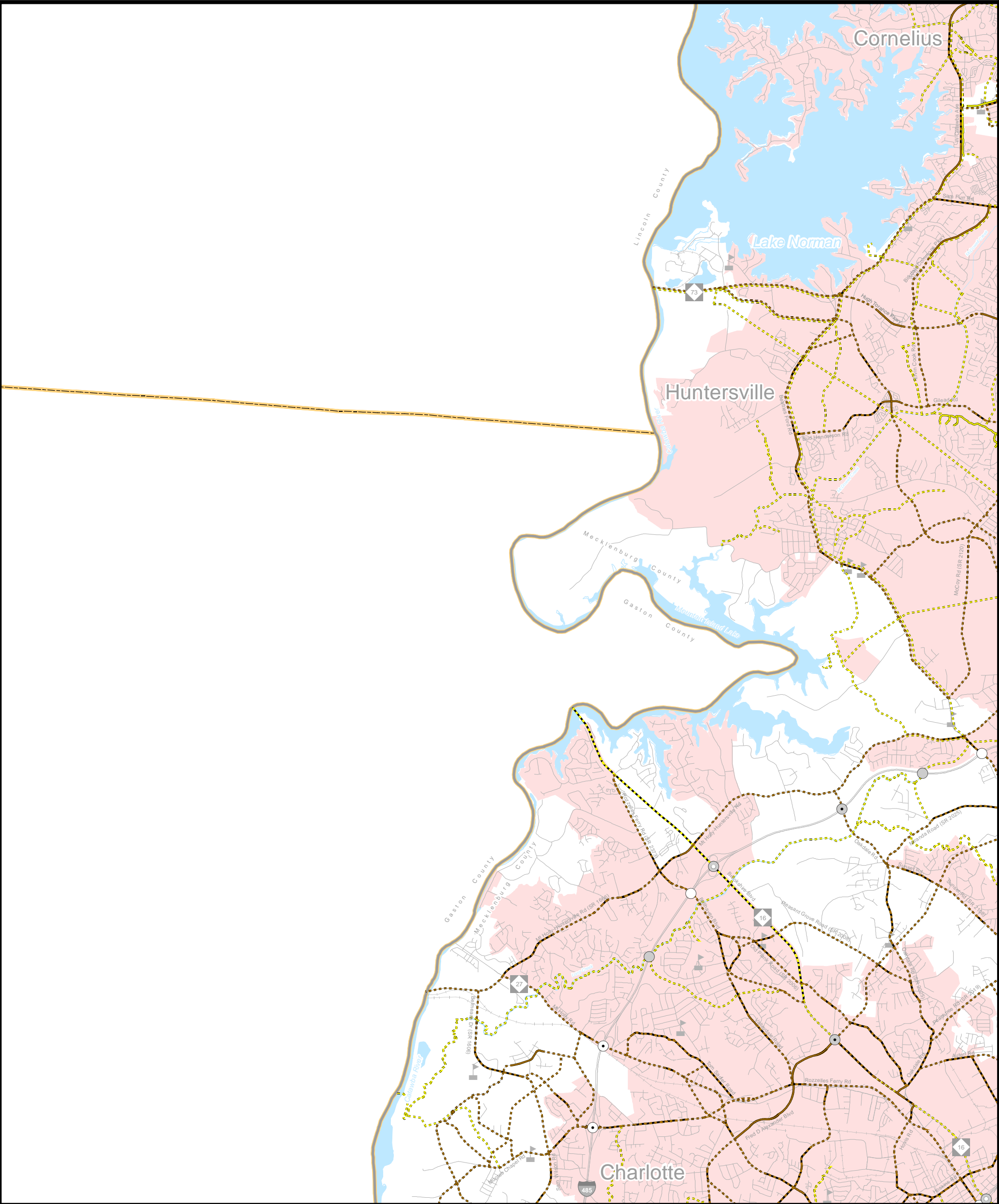
charlotte regional transportation planning organization

Charlotte Regional Transportation Planning Organization

North Carolina

Comprehensive Transportation Plan

Plan date: January 18, 2017



Sidewalks

- Existing
- Needs Improvement
- Recommended

Multi-Use Paths

- Existing
- Needs Improvement
- Recommended

Grade Separations

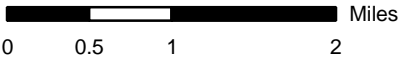
- Existing
- Needs Improvement
- Recommended

Interchanges

- Existing
- Needs Improvement
- Recommended

Interchanges with Managed Lanes Access

- Existing
- Needs Improvement
- Recommended



Sheet 5E of 5

Base map date: January 4, 2017

Refer to CTP document for more details

Pedestrian Map

Inset E

C RTP

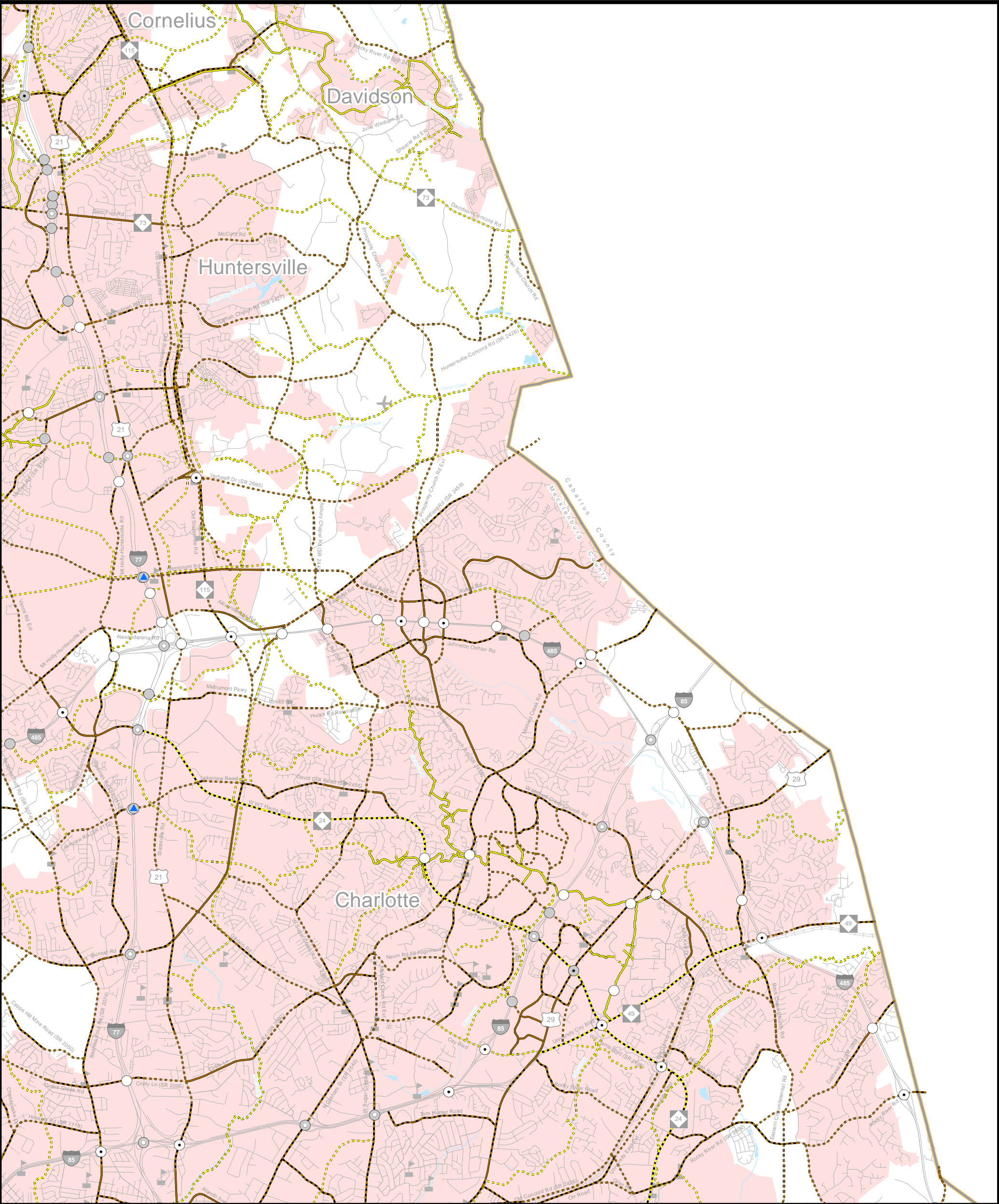
charlotte regional transportation planning organization

Charlotte Regional Transportation Planning Organization

North Carolina

Comprehensive Transportation Plan

Plan date: January 18, 2017



Sidewalks

- Existing
- Needs Improvement
- Recommended

Multi-Use Paths

- Existing
- Needs Improvement
- Recommended

Grade Separations

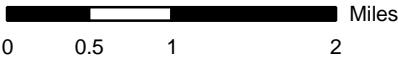
- Existing
- Needs Improvement
- Recommended

Interchanges

- Existing
- Needs Improvement
- Recommended

Interchanges with Managed Lanes Access

- Existing
- Needs Improvement
- Recommended



Sheet 5F of 5

Base map date: January 4, 2017

Refer to CTP document for more details

Pedestrian Map

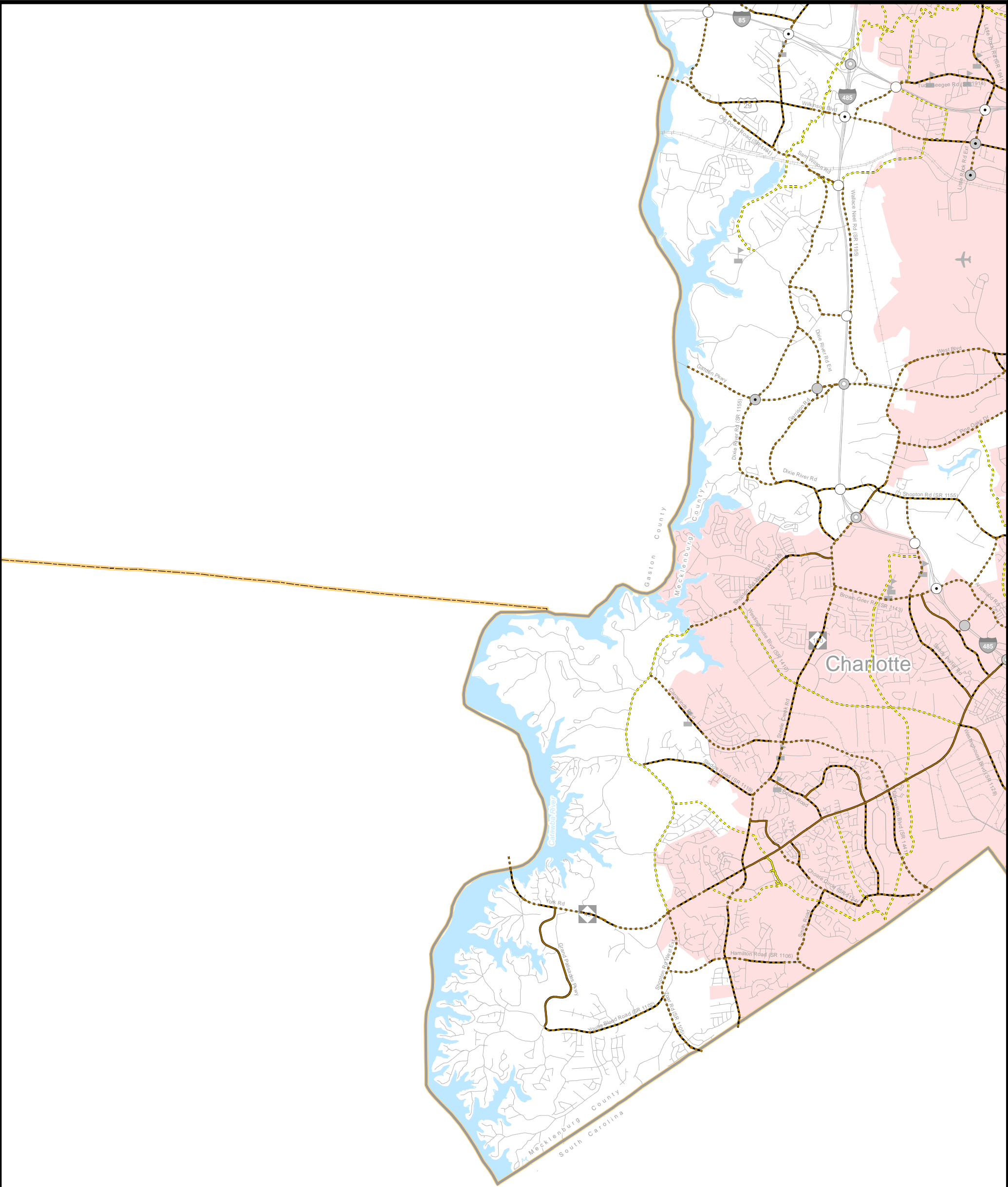
Inset F



Charlotte Regional Transportation Planning Organization
North Carolina

Comprehensive Transportation Plan

Plan date: January 18, 2017



Sidewalks

- Existing
- Needs Improvement
- Recommended

Multi-Use Paths

- Existing
- Needs Improvement
- Recommended

Grade Separations

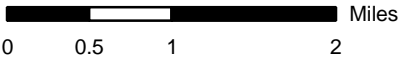
- Existing
- Needs Improvement
- Recommended

Interchanges

- Existing
- Needs Improvement
- Recommended

Interchanges with Managed Lanes Access

- Existing
- Needs Improvement
- Recommended



Sheet 5G of 5

Base map date: January 4, 2017

Refer to CTP document for more details

Pedestrian Map

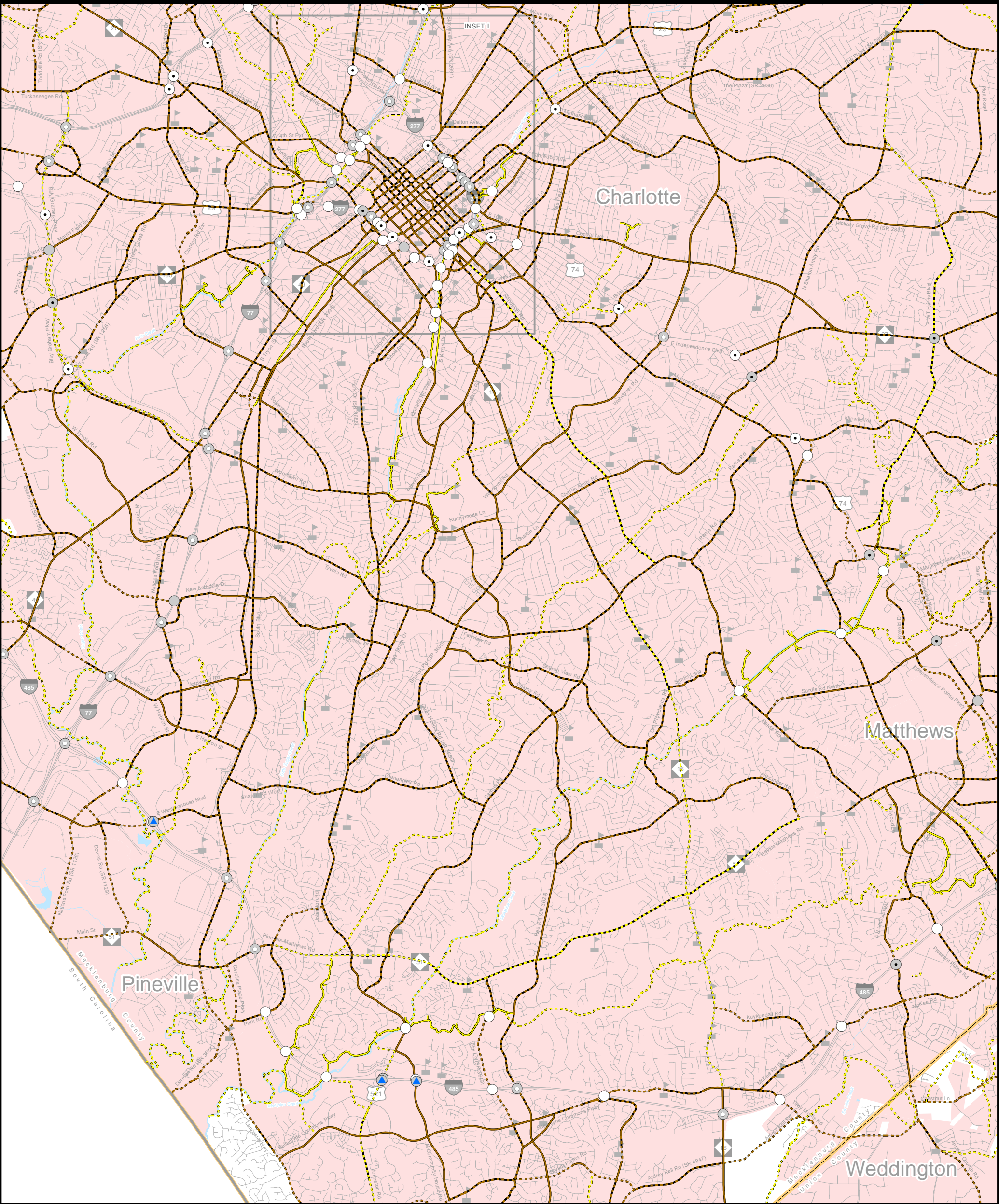
Inset G



Charlotte Regional Transportation Planning Organization
North Carolina

Comprehensive Transportation Plan

Plan date: January 18, 2017



Sidewalks

- Existing
- Needs Improvement
- Recommended

Multi-Use Paths

- Existing
- Needs Improvement
- Recommended

Grade Separations

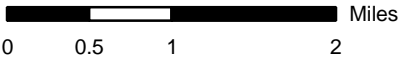
- Existing
- Needs Improvement
- Recommended

Interchanges

- Existing
- Needs Improvement
- Recommended

Interchanges with Managed Lanes Access

- Existing
- Needs Improvement
- Recommended



Sheet 5H of 5

Base map date: January 4, 2017

Refer to CTP document for more details

Pedestrian Map

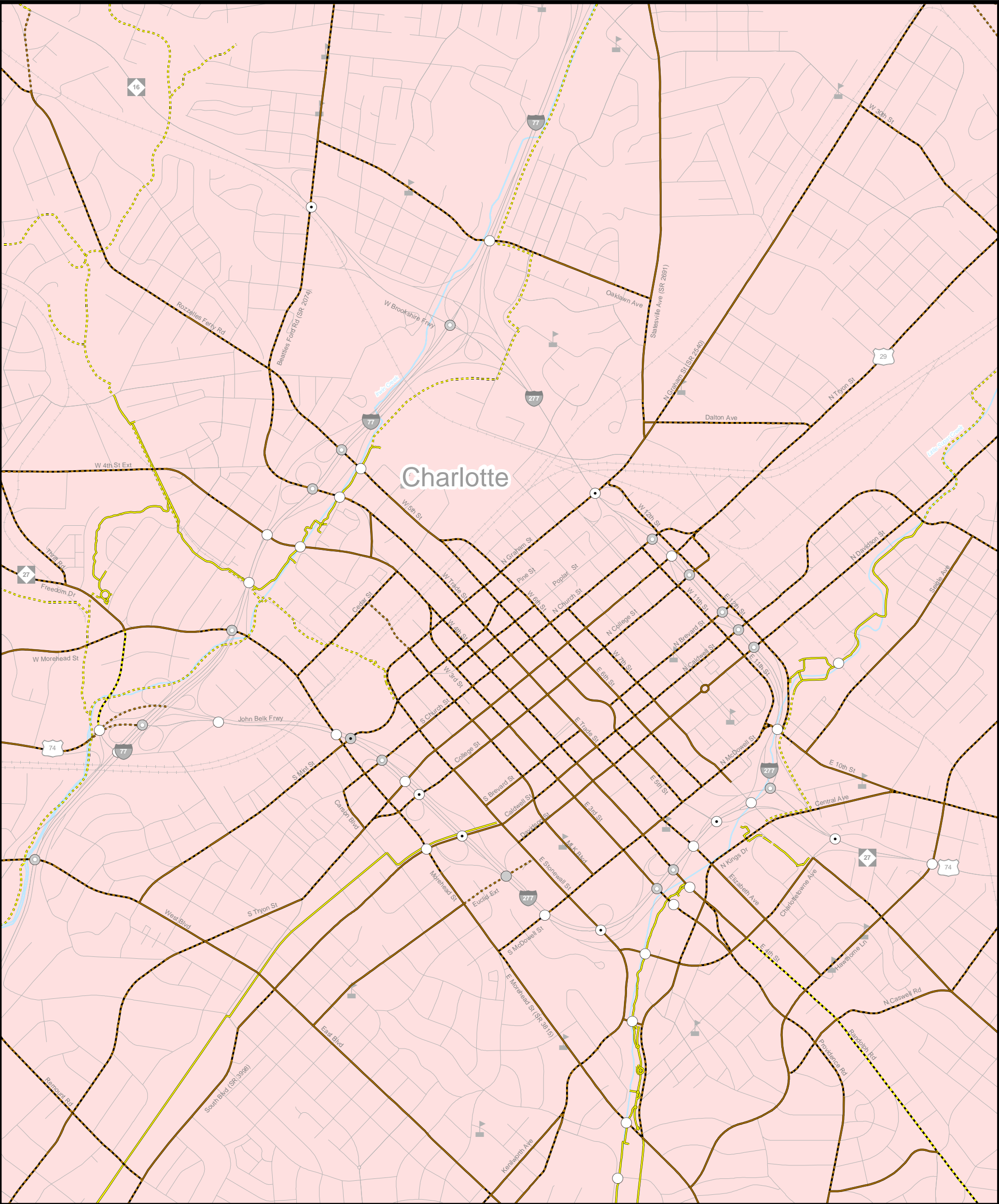
Inset H



Charlotte Regional Transportation Planning Organization
North Carolina

Comprehensive Transportation Plan

Plan date: January 18, 2017



Sidewalks

- Existing
- Needs Improvement
- Recommended

Multi-Use Paths

- Existing
- Needs Improvement
- Recommended

Grade Separations

- Existing
- Needs Improvement
- Recommended

Interchanges

- Existing
- Needs Improvement
- Recommended

Interchanges with Managed Lanes Access

- Existing
- Needs Improvement
- Recommended

0 0.125 0.25 0.5 Miles

Sheet 5I of 5

Base map date: January 4, 2017

Refer to CTP document for more details

Pedestrian Map

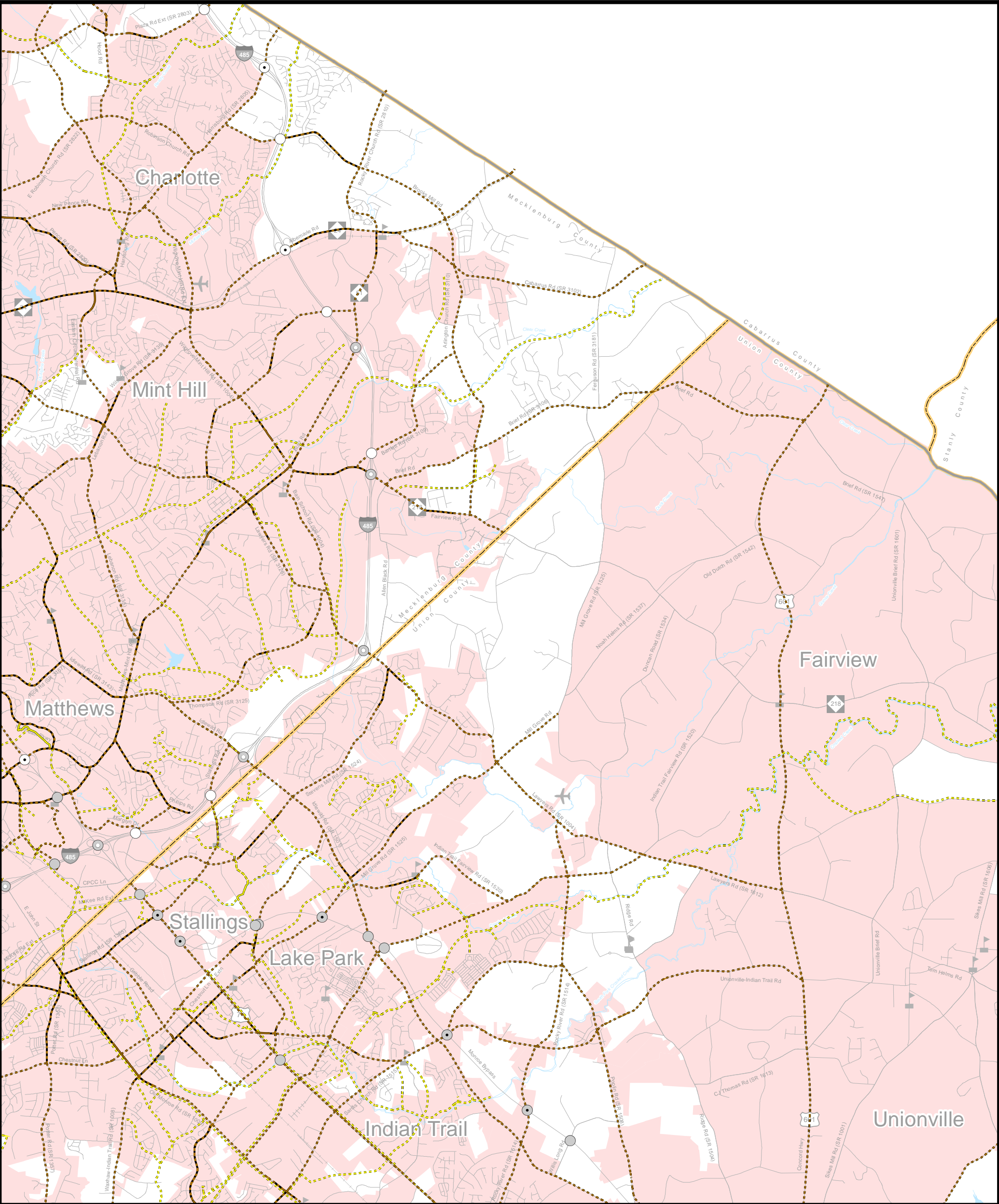
Inset I

Charlotte Regional Transportation Planning Organization

North Carolina

Comprehensive Transportation Plan

Plan date: January 18, 2017



Sidewalks

- Existing
- Needs Improvement
- Recommended

Multi-Use Paths

- Existing
- Needs Improvement
- Recommended

Grade Separations

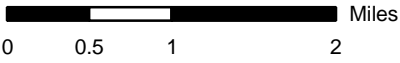
- Existing
- Needs Improvement
- Recommended

Interchanges

- Existing
- Needs Improvement
- Recommended

Interchanges with Managed Lanes Access

- Existing
- Needs Improvement
- Recommended



Sheet 5J of 5

Base map date: January 4, 2017

Refer to CTP document for more details

Pedestrian Map

Inset J

C RTP

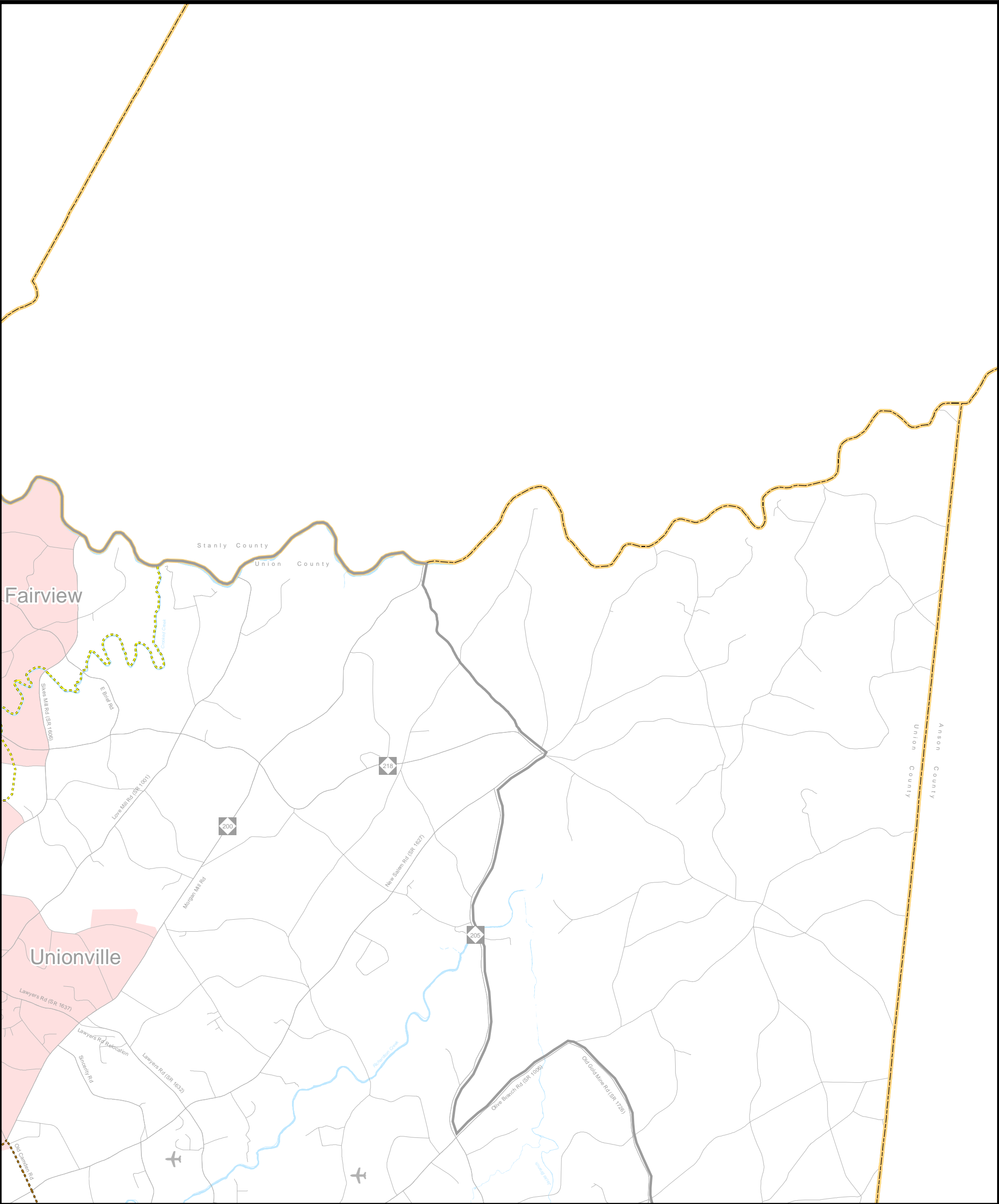
charlotte regional transportation planning organization

Charlotte Regional Transportation Planning Organization

North Carolina

Comprehensive Transportation Plan

Plan date: January 18, 2017



Sidewalks

- Existing
- Needs Improvement
- Recommended

Multi-Use Paths

- Existing
- Needs Improvement
- Recommended

Grade Separations

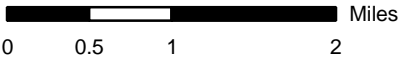
- Existing
- Needs Improvement
- Recommended

Interchanges

- Existing
- Needs Improvement
- Recommended

Interchanges with Managed Lanes Access

- Existing
- Needs Improvement
- Recommended



Sheet 5K of 5

Base map date: January 4, 2017

Refer to CTP document for more details

Pedestrian Map

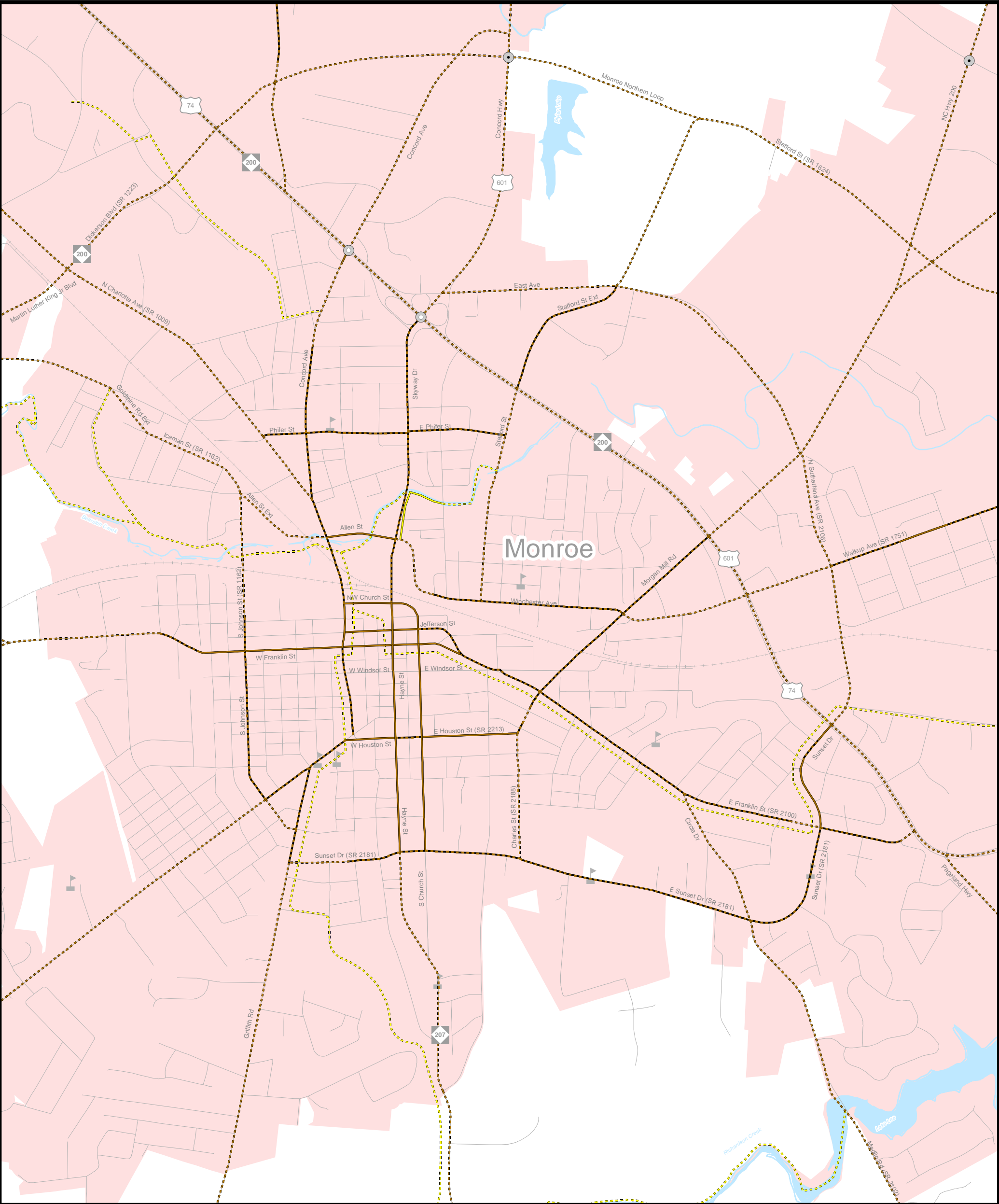
Inset K



Charlotte Regional Transportation Planning Organization
North Carolina

Comprehensive Transportation Plan

Plan date: January 18, 2017



Sidewalks

- Existing
- Needs Improvement
- Recommended

Multi-Use Paths

- Existing
- Needs Improvement
- Recommended

Grade Separations

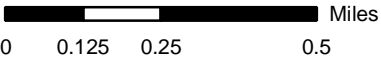
- Existing
- Needs Improvement
- Recommended

Interchanges

- Existing
- Needs Improvement
- Recommended

Interchanges with Managed Lanes Access

- Existing
- Needs Improvement
- Recommended



Sheet 5N of 5

Base map date: Janaury 4, 2017

Refer to CTP document for more details

Pedestrian Map

Inset N

C RTP

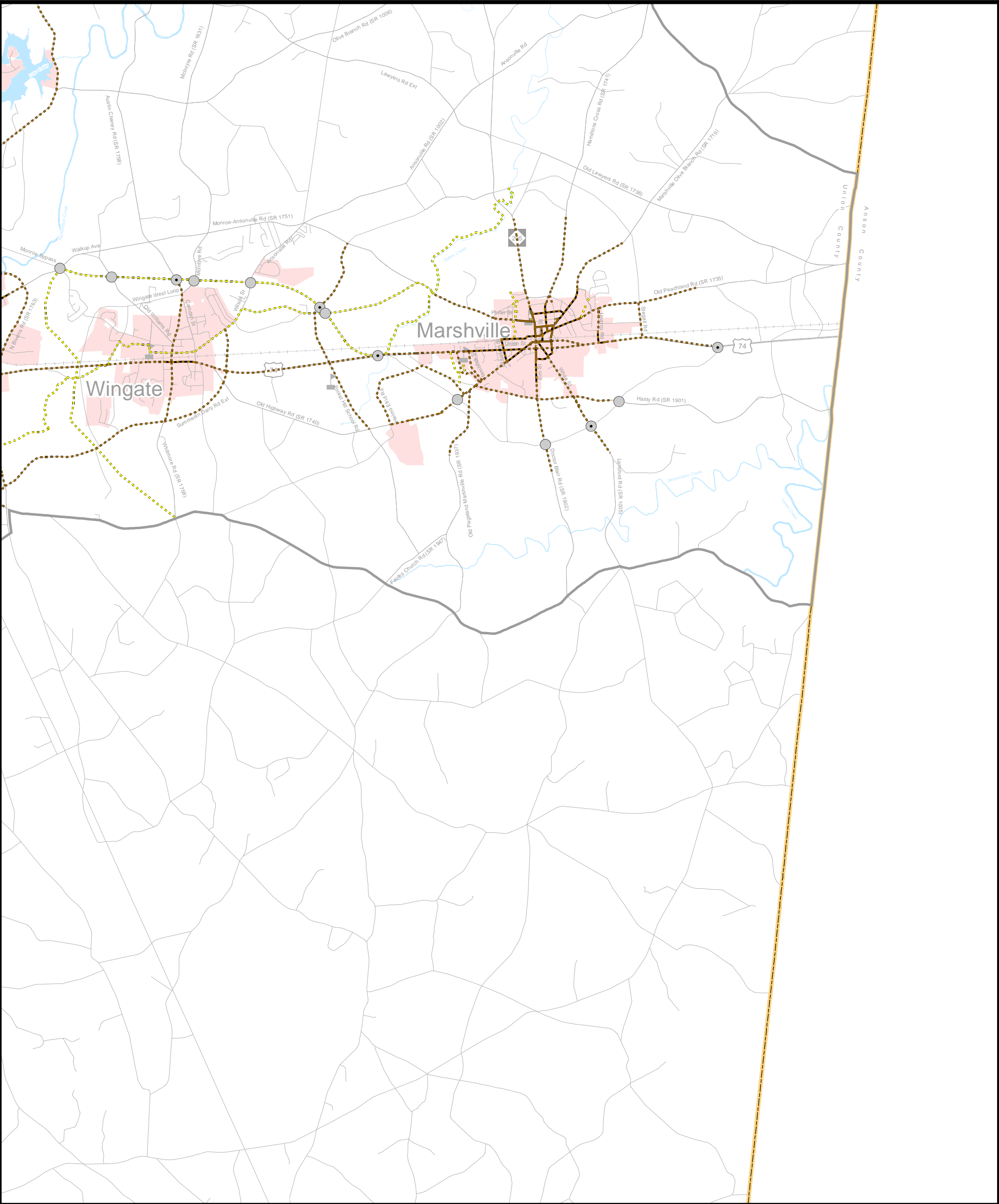
charlotte regional **transportation** planning organization

Charlotte Regional Transportation Planning Organization

North Carolina

Comprehensive Transportation Plan

Plan date: January 18, 2017



Sidewalks

- Existing
- Needs Improvement
- Recommended

Multi-Use Paths

- Existing
- Needs Improvement
- Recommended

Grade Separations

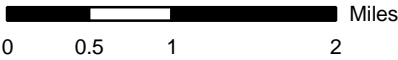
- Existing
- Needs Improvement
- Recommended

Interchanges

- Existing
- Needs Improvement
- Recommended

Interchanges with Managed Lanes Access

- Existing
- Needs Improvement
- Recommended



Sheet 50 of 5

Base map date: January 4, 2017

Refer to CTP document for more details

Pedestrian Map

Inset O



charlotte regional transportation planning organization

Charlotte Regional Transportation
Planning Organization
North Carolina

Comprehensive
Transportation Plan

Plan date: January 18, 2017