

Adopted by:

Clay County

Date: March 1, 2012

Hayesville

Date: April 9, 2012

NCDOT

Date: June 7, 2012

Endorsed by:

Southwestern RPO

Date: May 15, 2012

Recommended by:

Transportation Planning Branch

Date: May 16, 2012

NOTES:

Sheet 1 Adoption Sheet






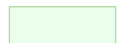
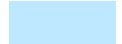
Sheet 2 Highway Map

Sheet 3 Public Transportation
and Rail Map

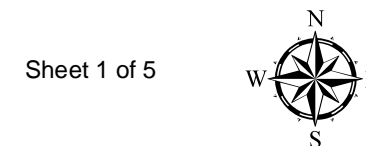
Sheet 4 Bicycle Map

Sheet 5 Pedestrian Map

Legend

-  Schools
-  Roads
-  Rivers and Streams
-  County Boundary
-  Municipal Boundary
-  National Forest
-  Water Bodies

0 0.5 1 2 3 Miles



Sheet 1 of 5

Base map date: September 28, 2011

Refer to CTP document for more details

Clay County
North Carolina

**Comprehensive
Transportation Plan**

Plan date: October 4, 2011

CHEROKEE COUNTY

MACON COUNTY

GEORGIA

NANTHALA NATIONAL FOREST

Hayesville

Chatuge Lake

Fires Creek Rd (SR 1300)

Tusquitee Rd (SR 1307)

Downings Creek Rd (SR 1325)

Cold Branch Rd (SR 1330)

Qualla Rd (SR 1305)

Myers Chapel Rd (SR 1140)

Old Highway 64 (SR 1353)

Old Highway 64 West (SR 1100)

Carter Cove Rd (SR 1126)

Myers Chapel Rd (SR 1140)

Myers Chapel Rd (SR 1140)

Myers Chapel Rd (SR 1140)

Myers Chapel Rd (SR 1140)

Myers Chapel Rd (SR 1140)

Myers Chapel Rd (SR 1140)

Myers Chapel Rd (SR 1140)

Myers Chapel Rd (SR 1140)

Myers Chapel Rd (SR 1140)

Myers Chapel Rd (SR 1140)

Myers Chapel Rd (SR 1140)

Myers Chapel Rd (SR 1140)

Myers Chapel Rd (SR 1140)

Myers Chapel Rd (SR 1140)

Myers Chapel Rd (SR 1140)

Myers Chapel Rd (SR 1140)

Myers Chapel Rd (SR 1140)

Myers Chapel Rd (SR 1140)

Myers Chapel Rd (SR 1140)

Myers Chapel Rd (SR 1140)

Myers Chapel Rd (SR 1140)

Myers Chapel Rd (SR 1140)

Myers Chapel Rd (SR 1140)

Myers Chapel Rd (SR 1140)

Myers Chapel Rd (SR 1140)

Myers Chapel Rd (SR 1140)

Myers Chapel Rd (SR 1140)

Myers Chapel Rd (SR 1140)

Myers Chapel Rd (SR 1140)

Myers Chapel Rd (SR 1140)