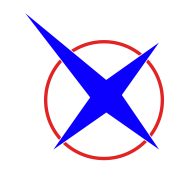
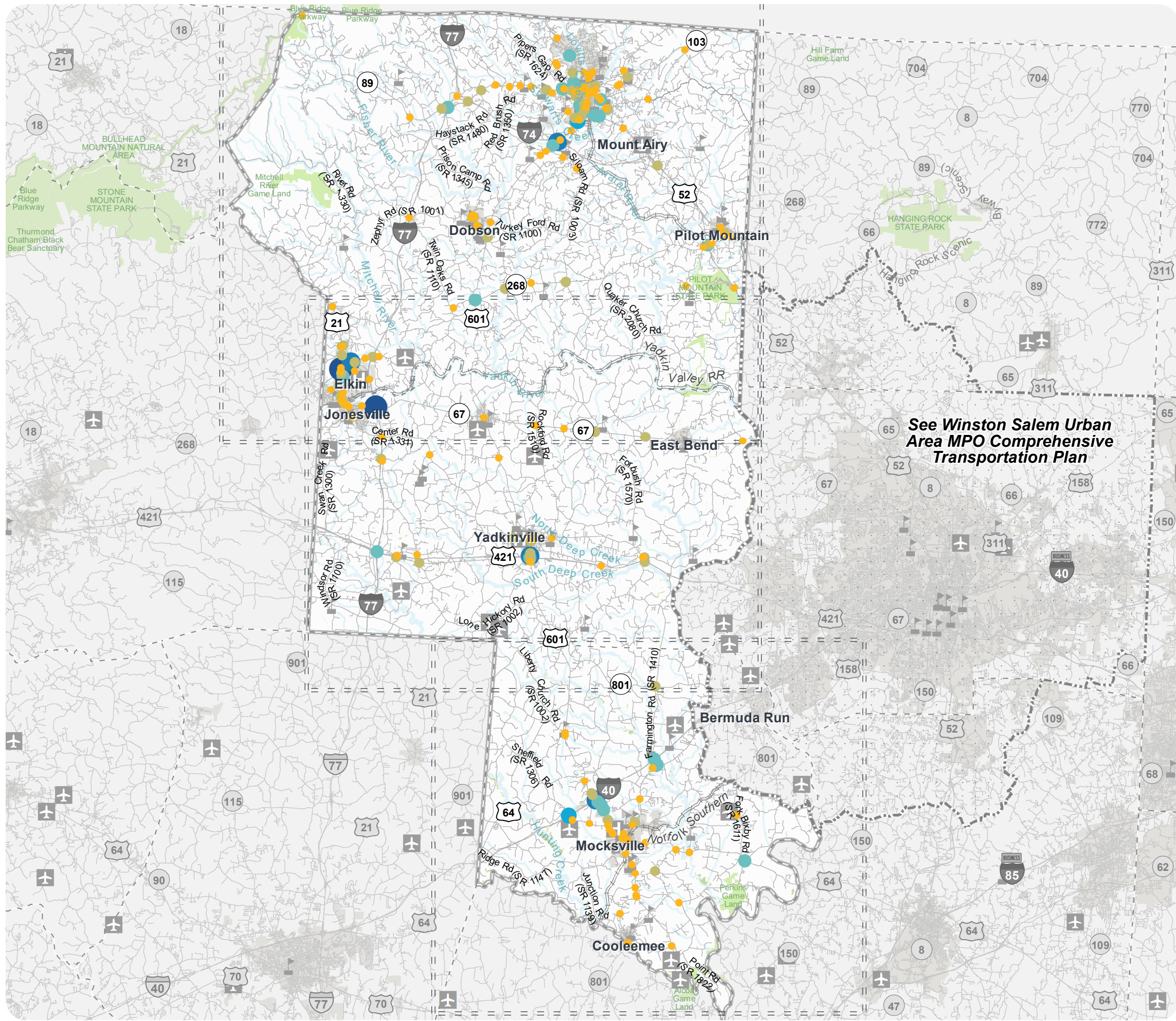


Figure 5
HIGH FREQUENCY CRASH LOCATIONS



DAVIE YADKIN AND SURRY COUNTIES REGIONAL
 CTP Analysis and Information

High Frequency Crash Features
 (January 2014 - December 2018)

Total Crashes	Intersection	Road Section
5 - 9		
10 - 19		
20 - 29		
31 - 39		
40 - 49		
50 and above		

- Other Features
- Study Road
 - MPO_Name
 - Northwest Piedmont RPO



Full report at:
<https://tinyurl.com/DavSurYadRegCTP>



Sheet 2 of 3

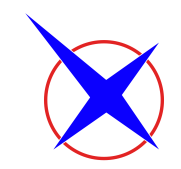
Base map date: March 13, 2019

Legal Disclaimer

This product contains mapping data for informational and planning purposes only, and is subject to change. Users should review or consult the primary data sources to ascertain the usability of the information.

WORKING COPY
 Plan Date: May 27, 2020

Figure 5
HIGH FREQUENCY CRASH LOCATIONS



DAVIE YADKIN AND SURRY COUNTIES REGIONAL
DAVIE COUNTY INSET
 CTP Analysis and Information
 High Frequency Crash Features
 (January 2012 - December 2016)

Total Crashes	Intersection	Road Section
5 - 9		
10 - 19		
20 - 29		
31 - 39		
40 - 49		
50 and above		

- Other Features
- Study Road
 - MPO_Name
 - Northwest Piedmont RPO



Full report at:
<https://tinyurl.com/DavSurYadRegCTP>



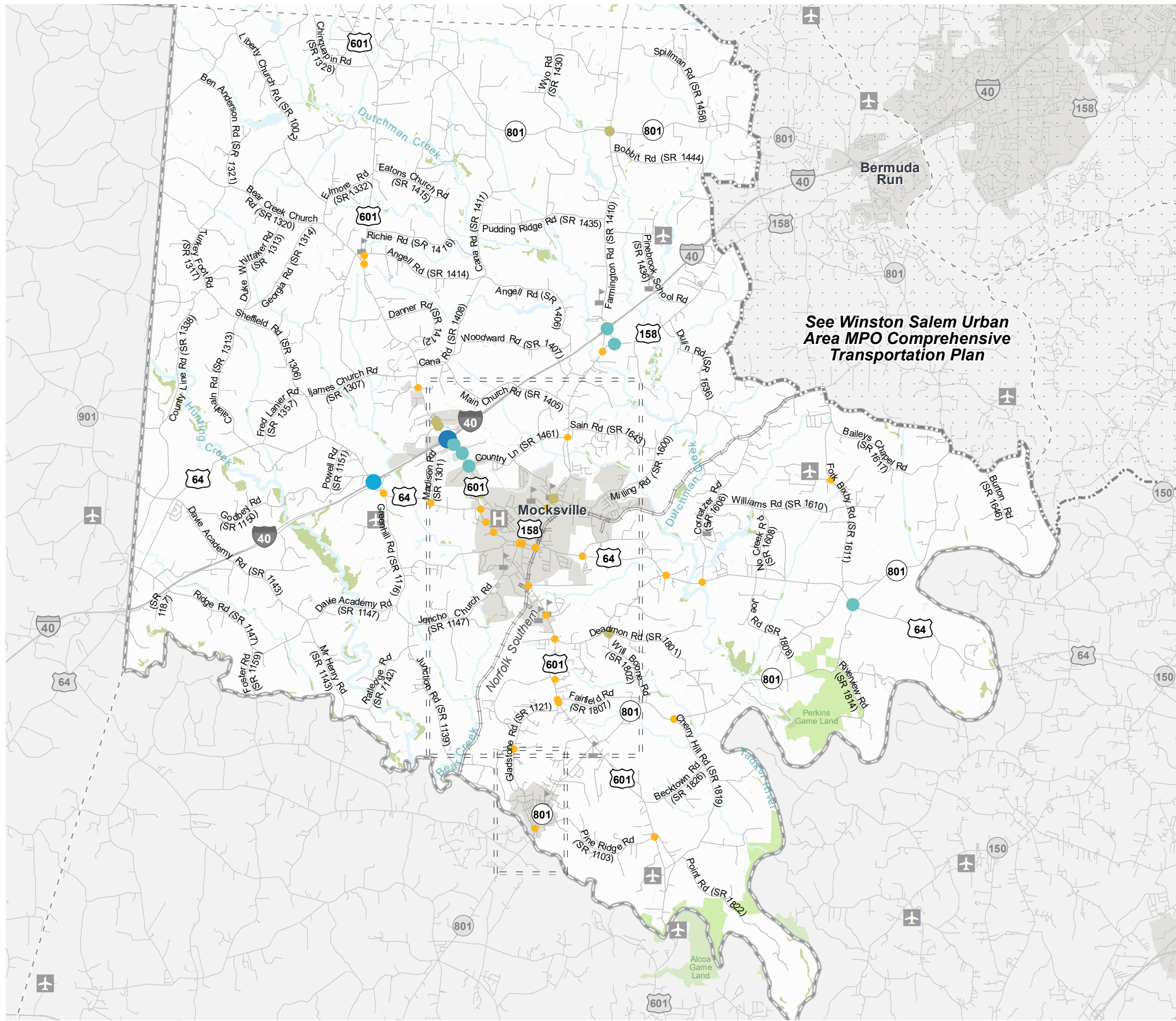
Sheet 2A of 4
 Inset A

Base map date: March 13, 2019

Legal Disclaimer

This product contains mapping data for informational and planning purposes only, and is subject to change. Users should review or consult the primary data sources to ascertain the usability of the information.

WORKING COPY
 Plan Date: May 28, 2020



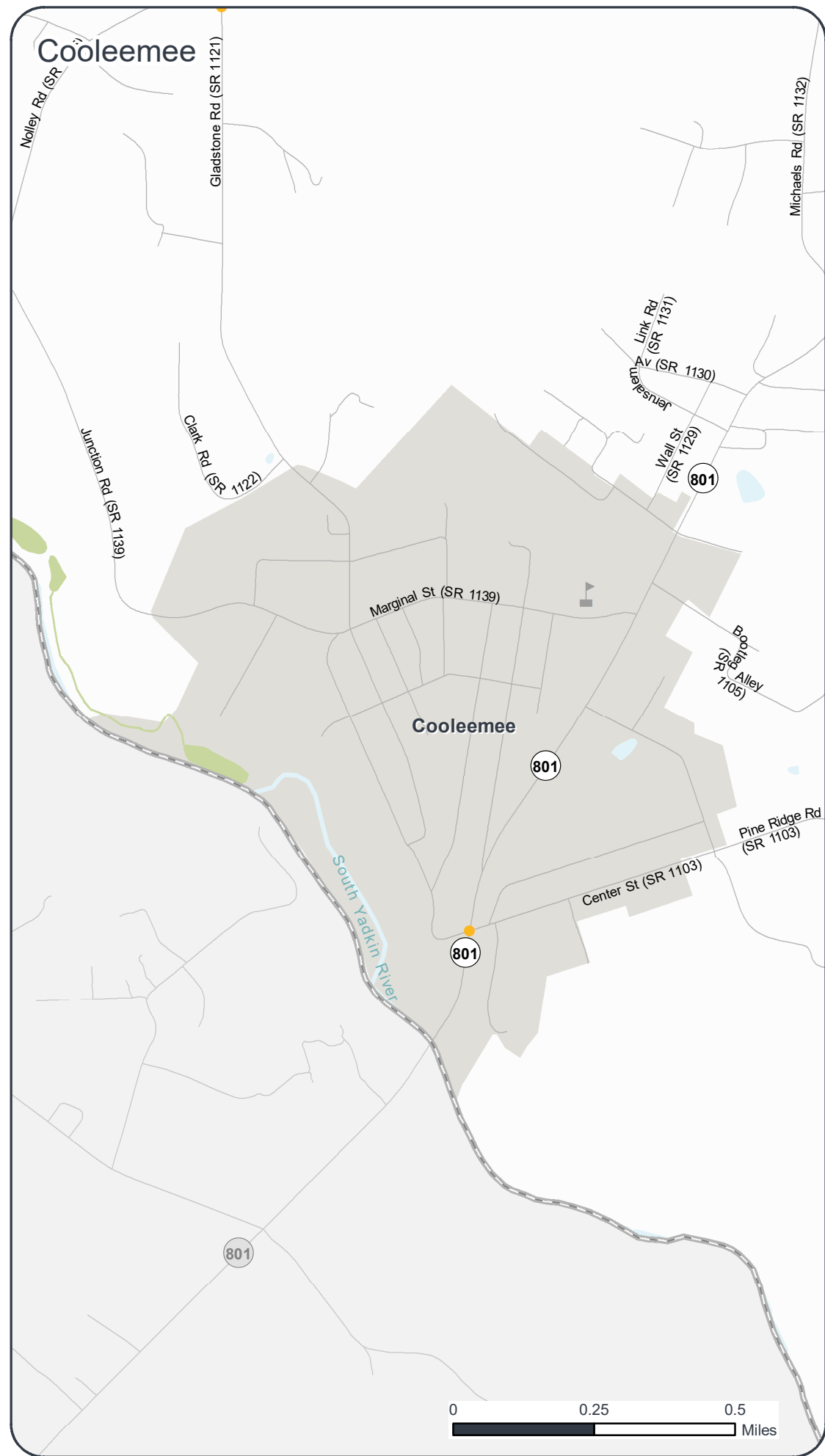
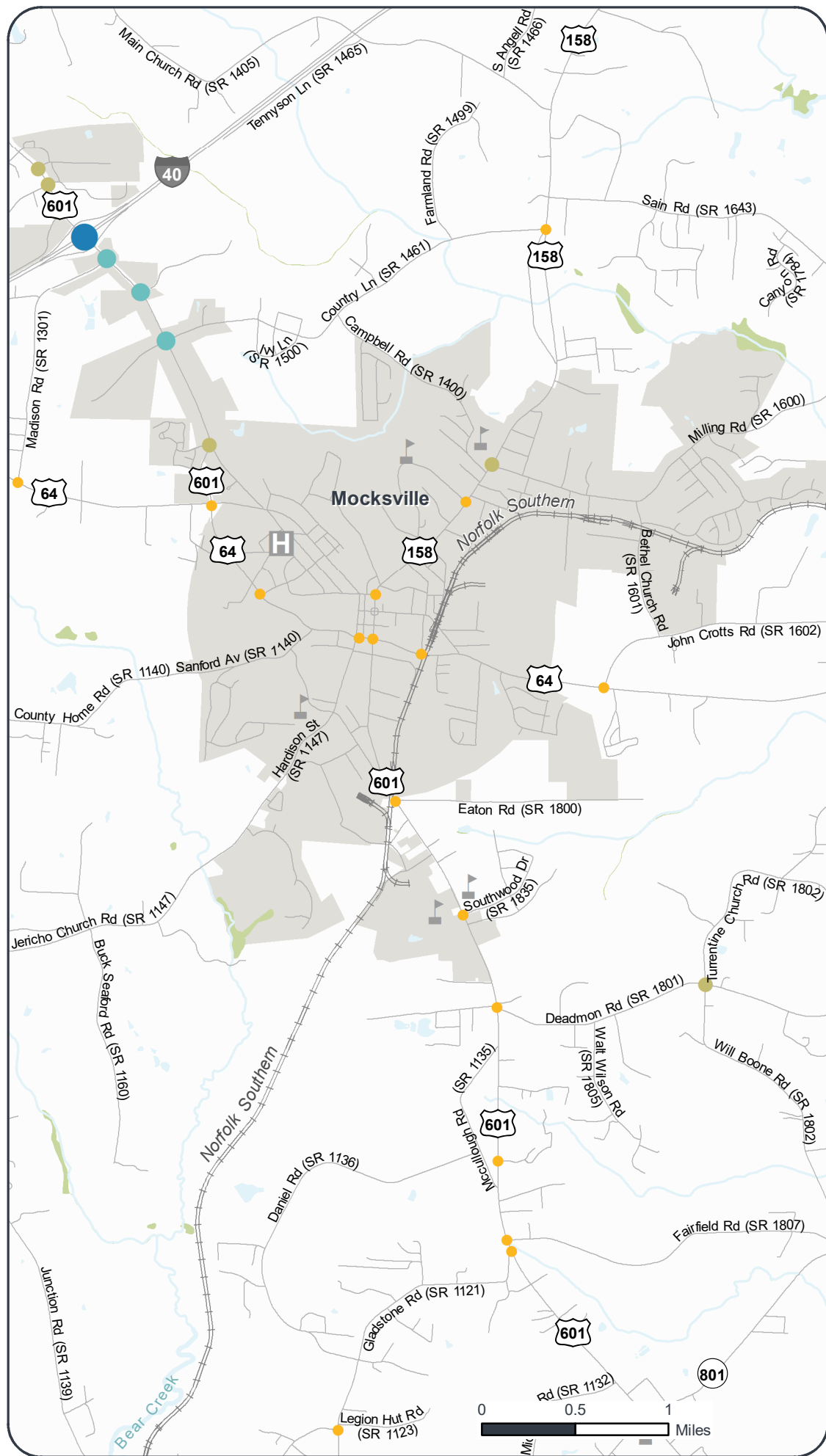


Figure 5
HIGH FREQUENCY CRASH LOCATIONS



DAVIE YADKIN AND SURRY COUNTIES REGIONAL
DAVIE COUNTY TOWNS INSETS

CTP Analysis and Information
 High Frequency Crash Features
 (January 2012 - December 2016)

Total Crashes	Intersection	Road Section
5 - 9		
10 - 19		
20 - 29		
31 - 39		
40 - 49		
50 and above		

Other Features

- Study Road
- MPO_Name
- Northwest Piedmont RPO



Full report at:
<https://tinyurl.com/DavSurYadRegCTP>



Sheet 2A of 4
 Inset A

Base map date: March 13, 2019

Legal Disclaimer

This product contains mapping data for informational and planning purposes only, and is subject to change. Users should review or consult the primary data sources to ascertain the usability of the information.

WORKING COPY
 Plan Date: May 28, 2020

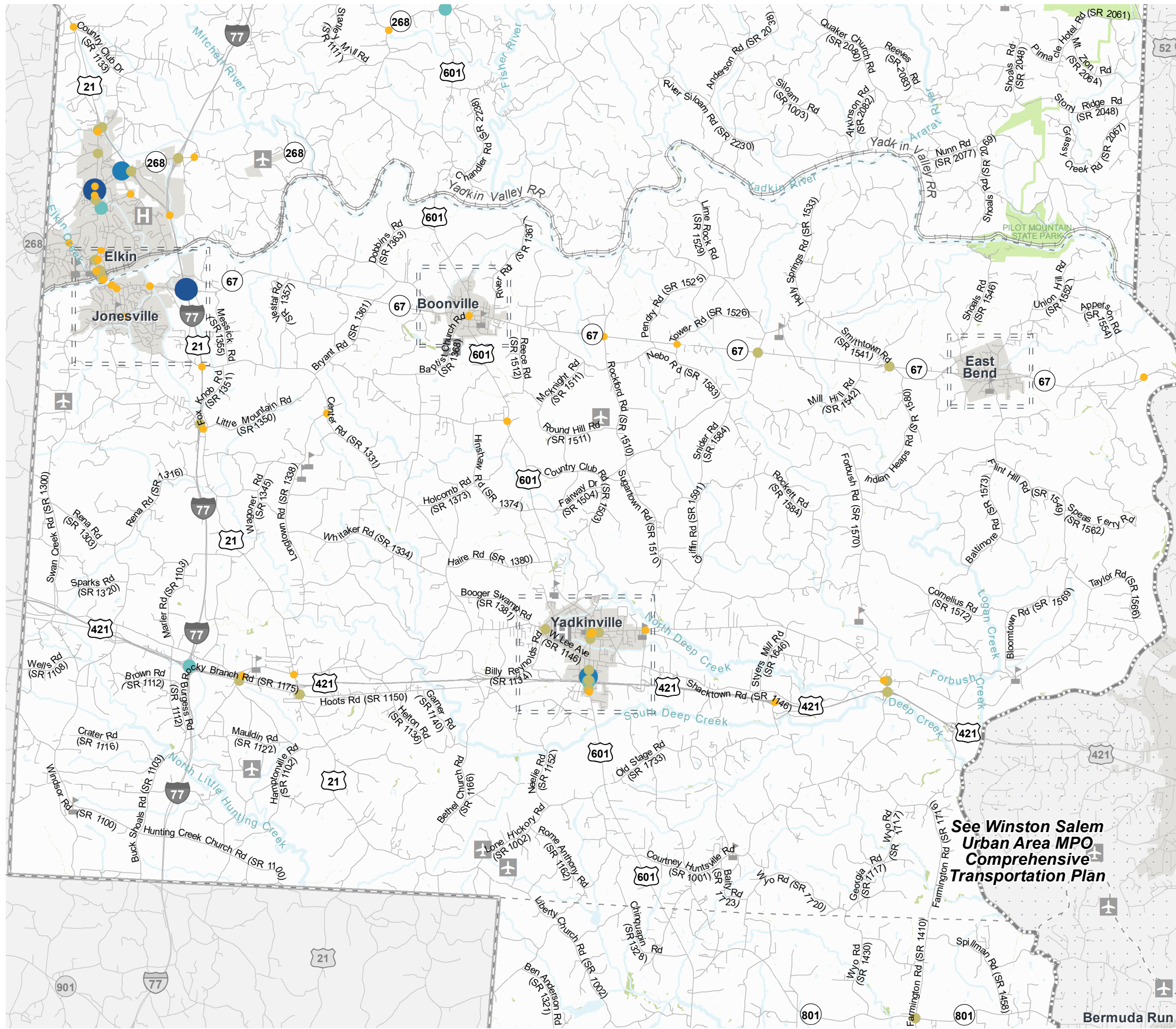





Figure 5
HIGH FREQUENCY CRASH LOCATIONS

DAVIE YADKIN AND SURRY COUNTIES REGIONAL
YADKIN COUNTY INSET
 CTP Analysis and Information
 High Frequency Crash Features
 (January 2012 - December 2016)

Total Crashes	Intersection	Road Section
5 - 9		
10 - 19		
20 - 29		
31 - 39		
40 - 49		
50 and above		

Other Features

- Study Road
- MPO_Name
- Northwest Piedmont RPO

Full report at:
<https://tinyurl.com/DavSurYadRegCTP>

0 0.5 1 2 3 4 5 Miles

Sheet 2A of 4
 Inset A

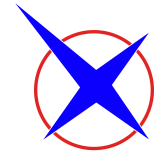
Base map date: March 13, 2019

Legal Disclaimer

This product contains mapping data for informational and planning purposes only, and is subject to change. Users should review or consult the primary data sources to ascertain the usability of the information.

WORKING COPY
 Plan Date: May 28, 2020

Figure 5
HIGH FREQUENCY CRASH LOCATIONS



DAVIE YADKIN AND SURRY COUNTIES REGIONAL
YADKIN COUNTY TOWNS INSETS

CTP Analysis and Information
 High Frequency Crash Features
 (January 2012 - December 2016)

Total Crashes	Intersection	Road Section
5 - 9		
10 - 19		
20 - 29		
31 - 39		
40 - 49		
50 and above		

Other Features

- Study Road
- MPO_Name
- Northwest Piedmont RPO



Full report at:
<https://tinyurl.com/DavSurYadRegCTP>



Sheet 2A of 4
 Inset A

Base map date: March 13, 2019

Legal Disclaimer

This product contains mapping data for informational and planning purposes only, and is subject to change. Users should review or consult the primary data sources to ascertain the usability of the information.

WORKING COPY
 Plan Date: May 28, 2020

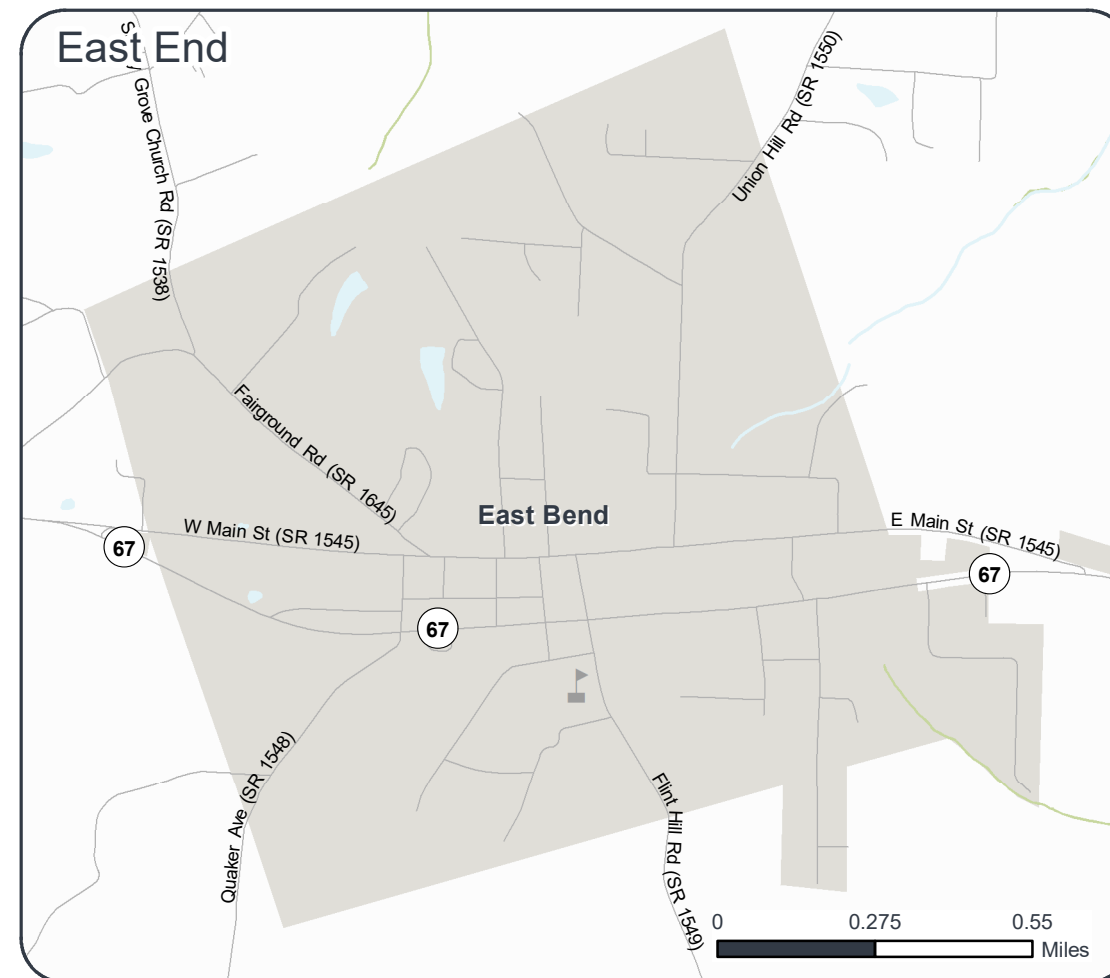
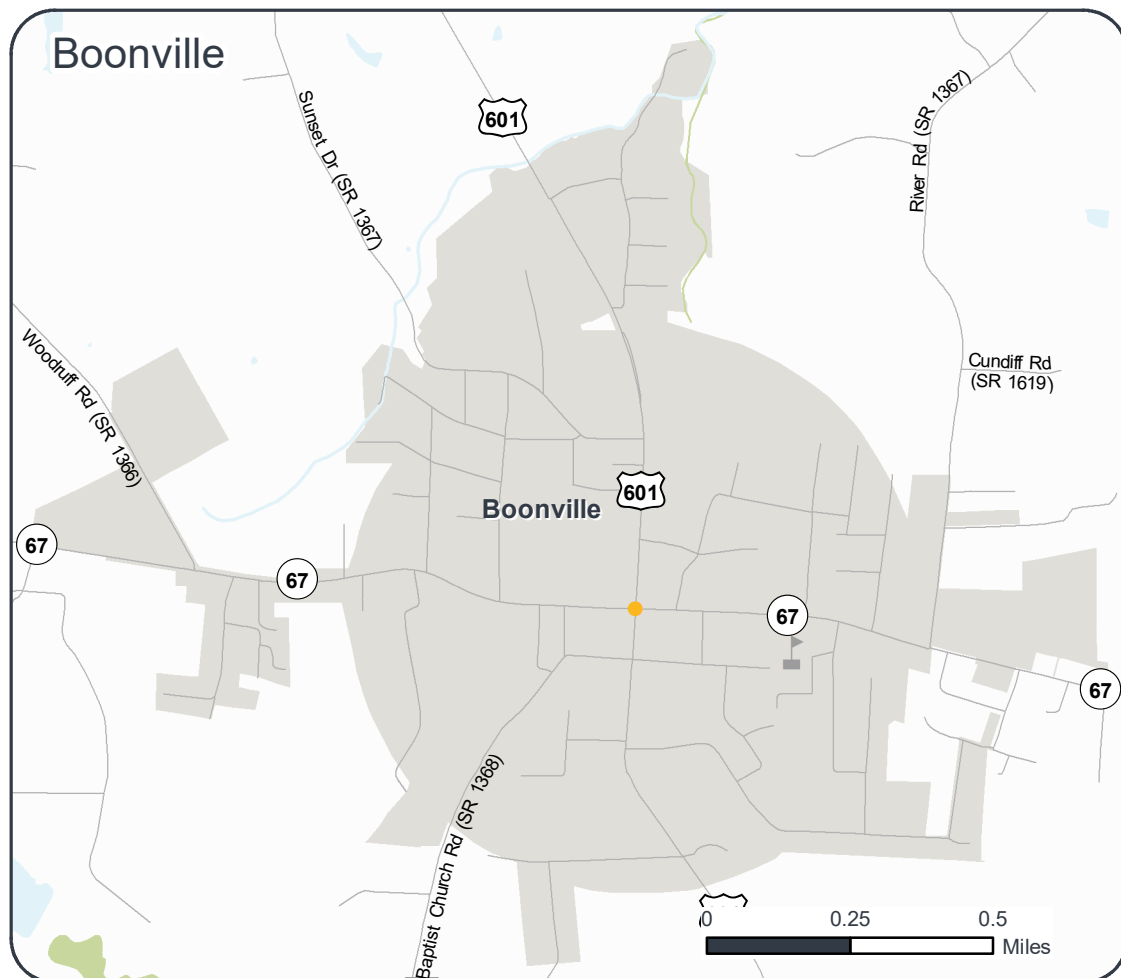
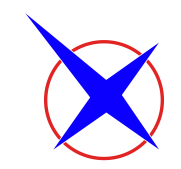
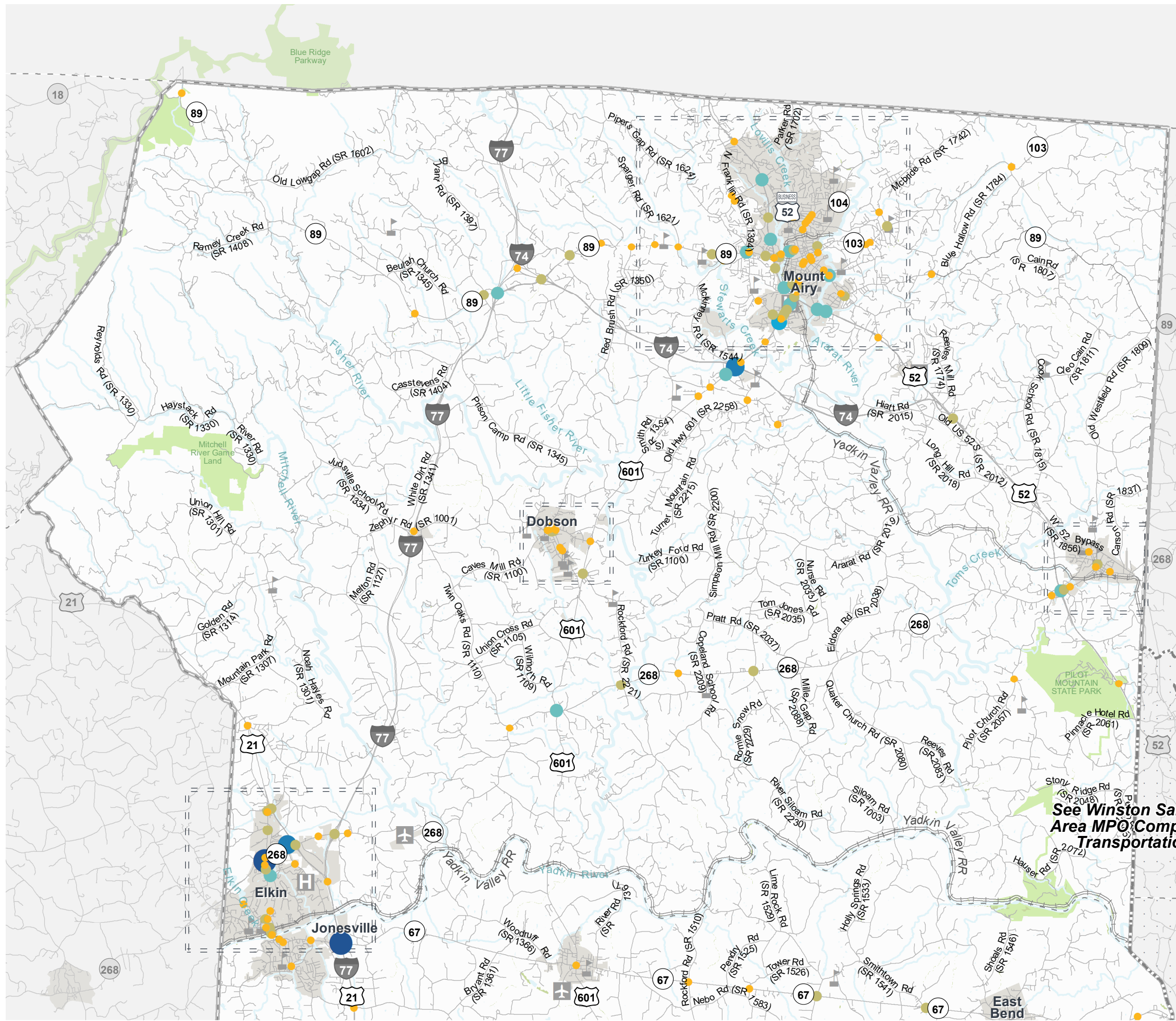


Figure 5
HIGH FREQUENCY CRASH LOCATIONS



DAVIE YADKIN AND SURRY COUNTIES REGIONAL
SURRY COUNTY INSET
 CTP Analysis and Information
 High Frequency Crash Features
 (January 2012 - December 2016)

Total Crashes	Intersection	Road Section
5 - 9		
10 - 19		
20 - 29		
31 - 39		
40 - 49		
50 and above		

- Other Features
- Study Road
 - MPO_Name
 - Northwest Piedmont RPO



Full report at:
<https://tinyurl.com/DavSurYadRegCTP>



Sheet 2A of 4
 Inset A

Base map date: March 13, 2019

Legal Disclaimer

This product contains mapping data for informational and planning purposes only, and is subject to change. Users should review or consult the primary data sources to ascertain the usability of the information.

WORKING COPY
 Plan Date: May 28, 2020

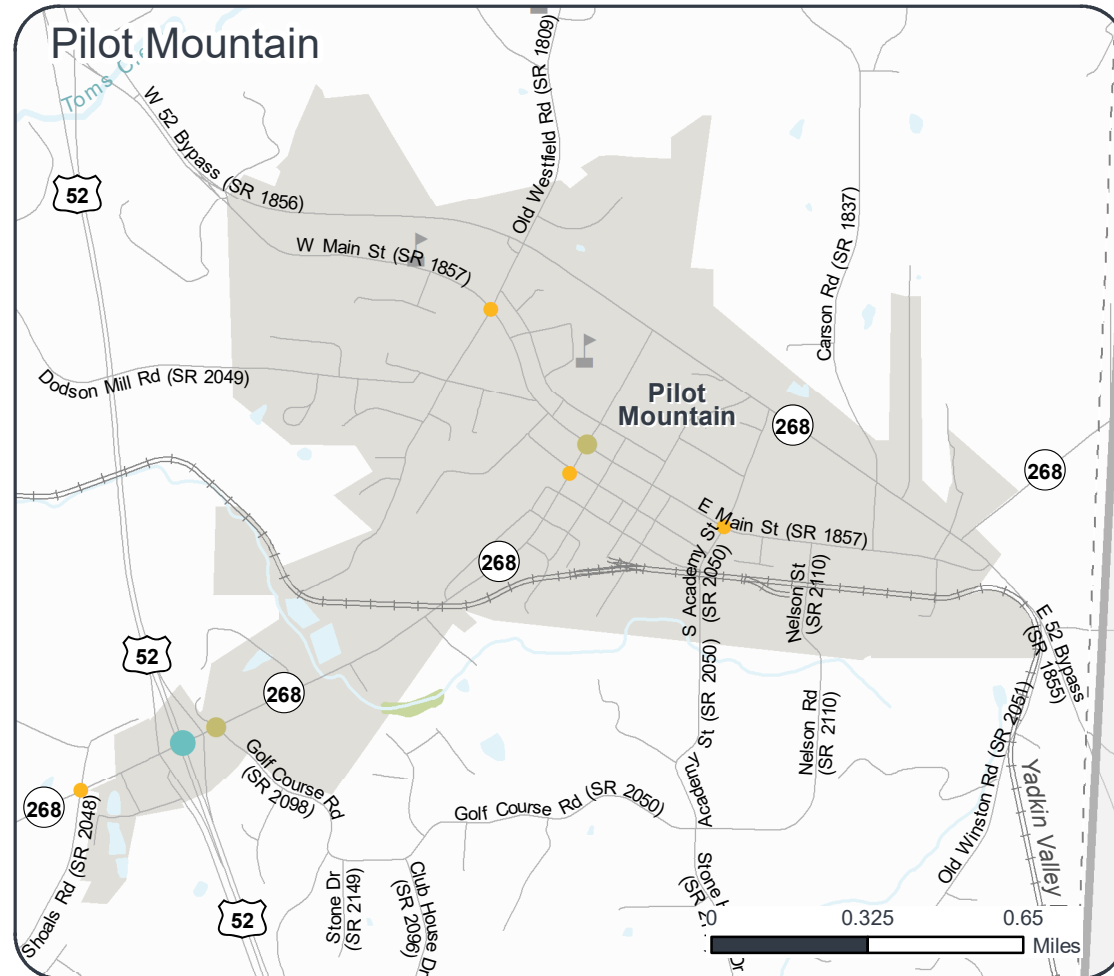
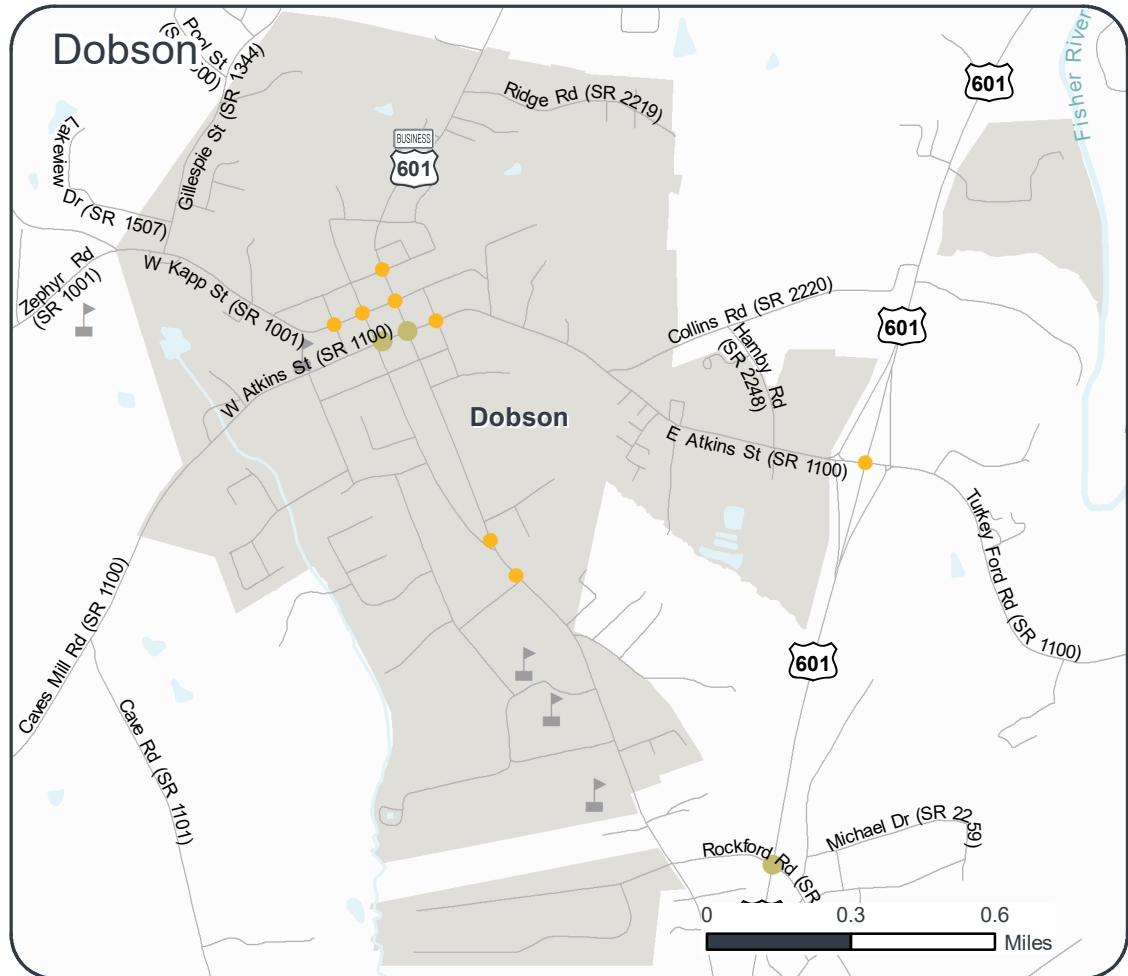
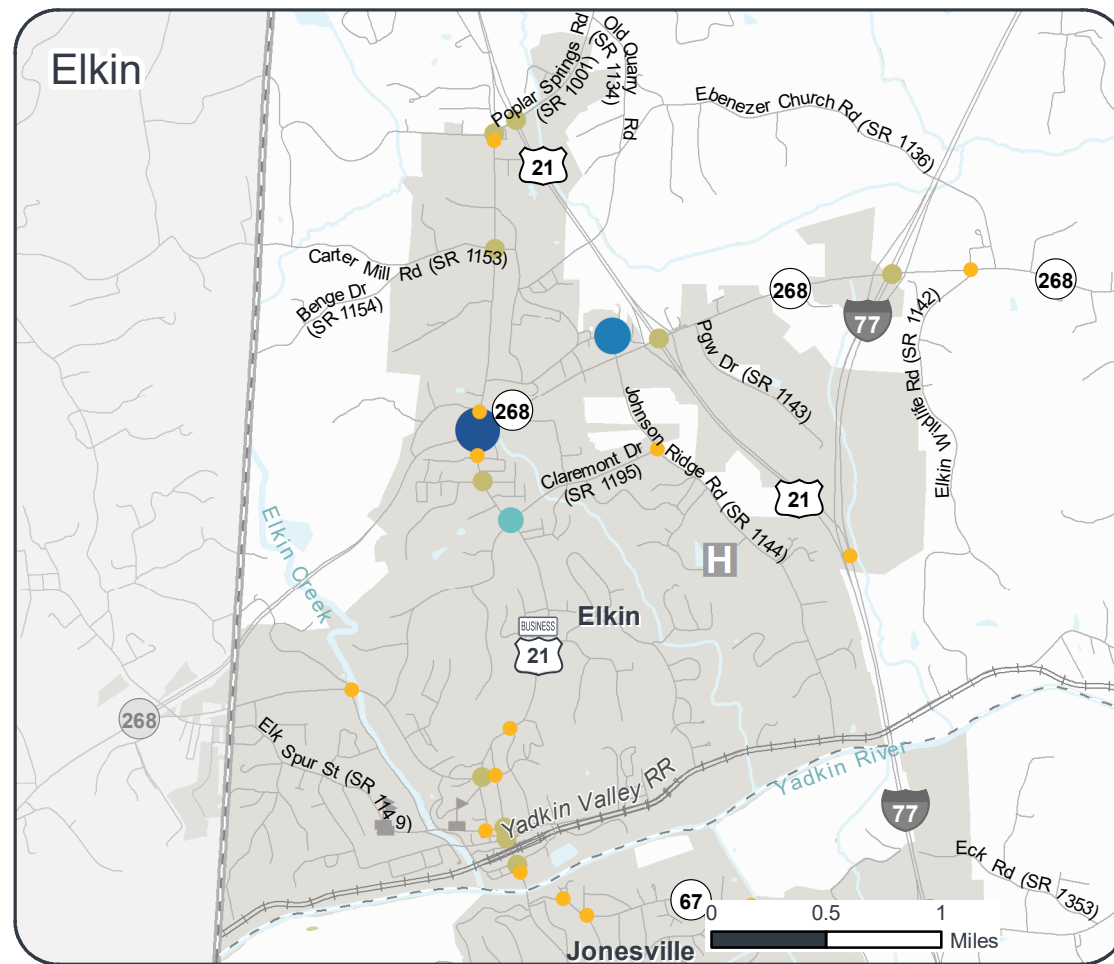
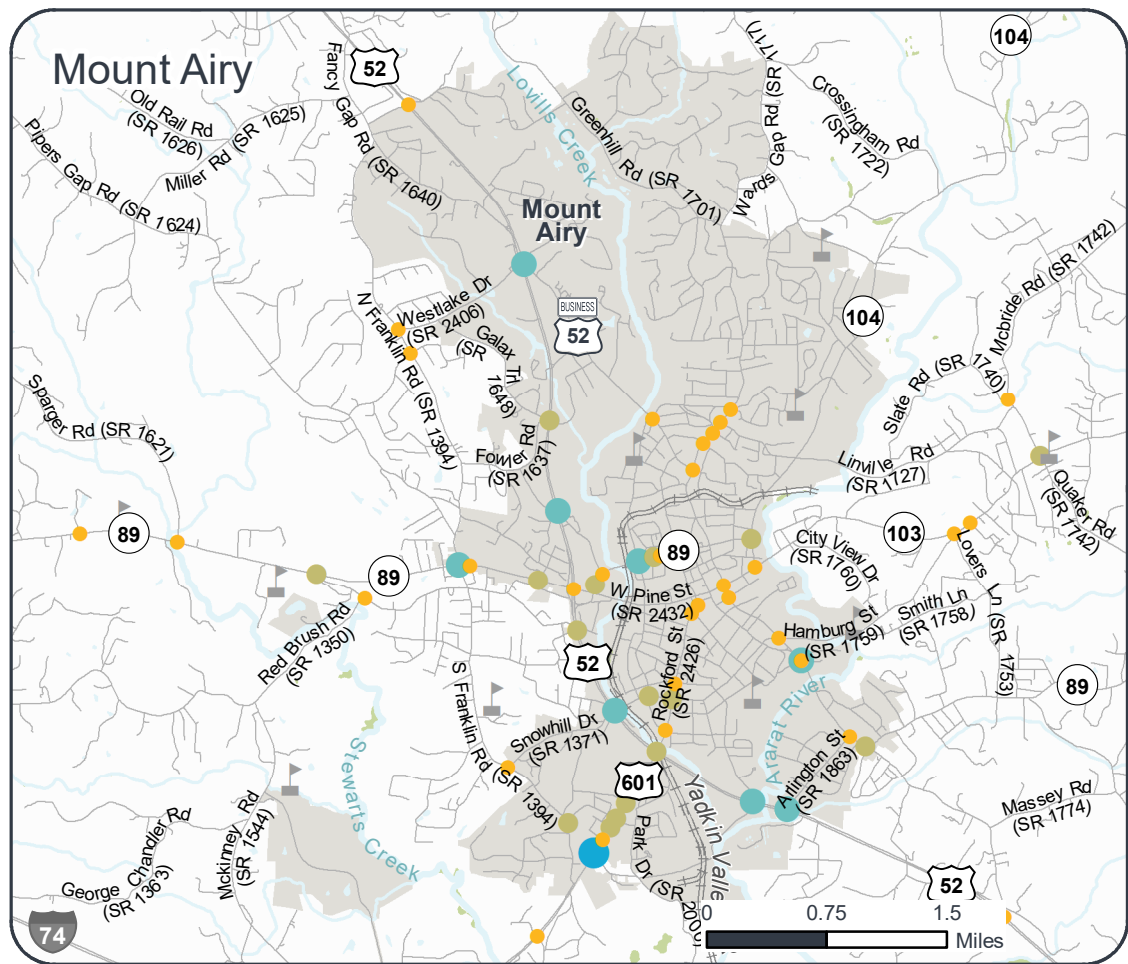















Figure 5
HIGH FREQUENCY CRASH LOCATIONS









**DAVIE YADKIN AND SURRY COUNTIES REGIONAL
SURRY COUNTY TOWNS INSETS**

CTP Analysis and Information
High Frequency Crash Features
(January 2012 - December 2016)

Total Crashes	Intersection	Road Section
5 - 9		
10 - 19		
20 - 29		
31 - 39		
40 - 49		
50 and above		

Other Features

-  Study Road
-  MPO_Name
-  Northwest Piedmont RPO

Full report at:
<https://tinyurl.com/DavSurYadRegCTP>

0 0.5 1 Miles

**Sheet 2A of 4
Inset A**

Base map date: March 13, 2019

Legal Disclaimer

This product contains mapping data for informational and planning purposes only, and is subject to change. Users should review or consult the primary data sources to ascertain the usability of the information.

WORKING COPY
Plan Date: May 28, 2020