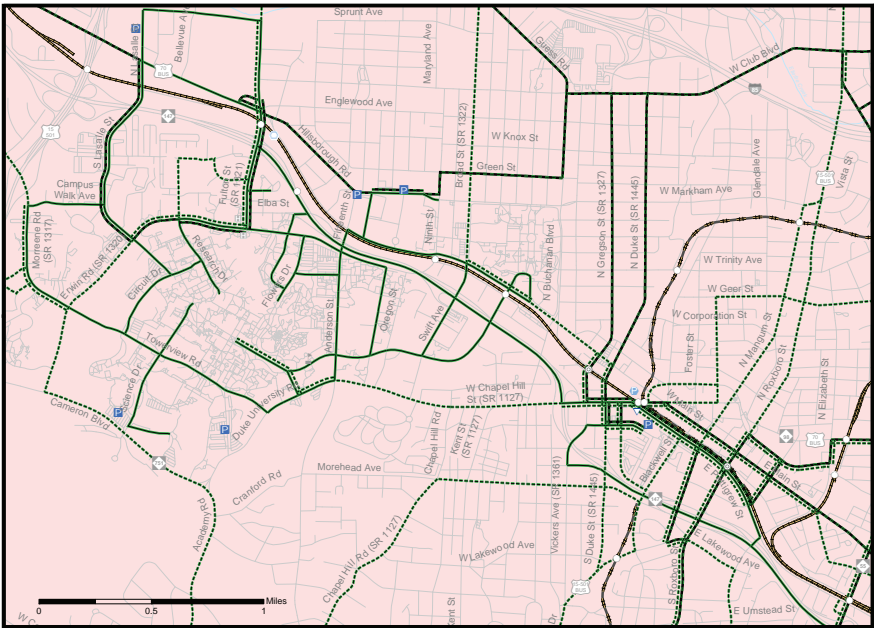
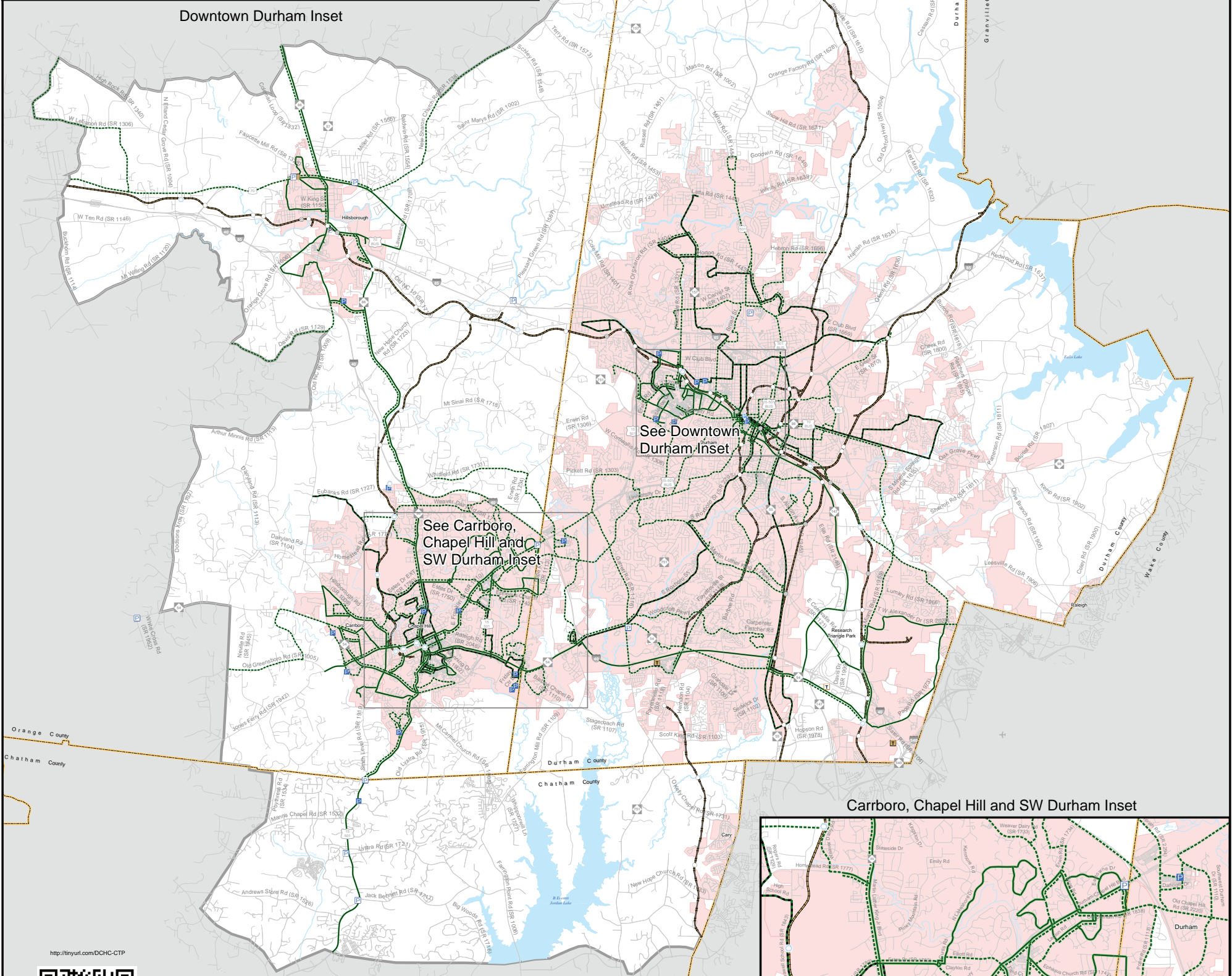


DCHC MPO - CTP AMENDMENT 4 PUBLIC TRANSPORTATION MAP



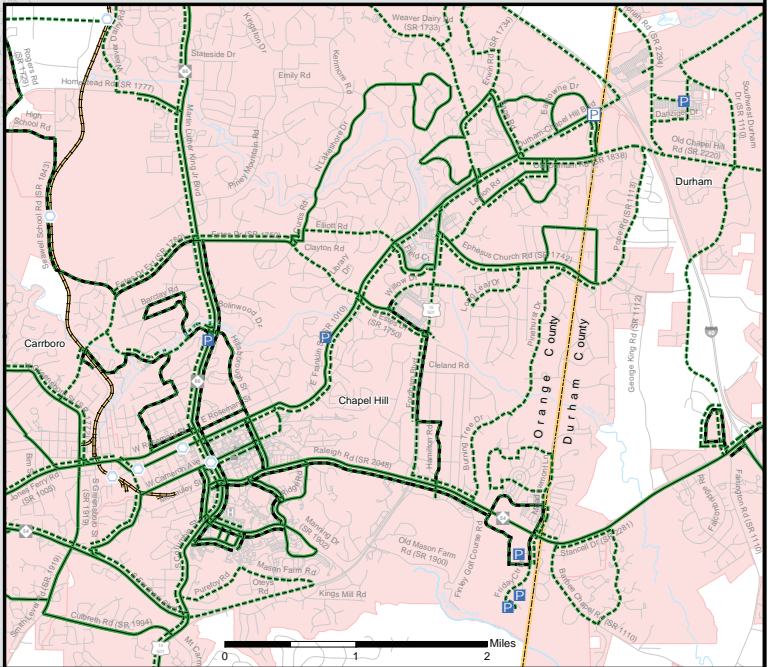
Downtown Durham Inset



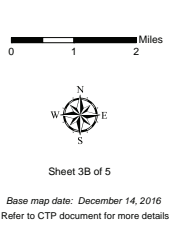
See Carrboro,
Chapel Hill and
SW Durham Inset

See Downtown
Durham Inset

Carrboro, Chapel Hill and SW Durham Inset



- | | | |
|---|---|--|
| Bus Routes
Existing
Needs Improvement
Recommended | Rail Corridor
Active
Inactive
Recommended | Grade Separations
Existing
Needs Improvement
Recommended |
| Multimodal Connector
Existing
Recommended | Park and Ride Lot
Existing
Recommended | Hospitals
Existing
Recommended |
| Rail Stations
Existing
Recommended | Rail Stations with Park and Ride Lot
Existing
Recommended | Schools
Existing
Recommended |
| Transit Center
Existing
Recommended | Transit Center with Park and Ride Lot
Existing
Recommended | Airports
Existing
Recommended |



**Public Transportation
Map**

RECOMMENDED

**Durham-Chapel Hill-
Carrboro MPO**

**Comprehensive
Transportation Plan**

Plan date: March 9, 2022

Note: The concepts shown on a CTP are for planning purposes and are subject to change. These concepts will need additional analysis to meet state and federal environmental regulations, to determine final locations and designs, and to be funded for implementation. Local zoning or subdivision ordinances may require the dedication of right of way based on the concepts shown on the CTP and local collector street plans, based on N.C.G.S. § 136-66.2 and § 136-66.10.

Note: The Durham-Orange Light Rail Transit project has been discontinued as of early 2019. For more information go to <https://gotriangle.org/lighttrailhome>.

Note: The Strategic Transportation Investments (STI) law (House Bill 817) establishes design elements that emphasize safety, mobility, complete streets, and accessibility for multiple modes of travel. The "typical" highway cross sections used in this CTP were updated on May 5, 2014 in response to STI law.

NCDOT's Complete Streets Policy "requires that NCDOT's planners and designers will consider and incorporate multimodal alternatives in the design and improvement of all appropriate transportation projects within a growth area of a town or city unless exceptional circumstances exist." (For more information on Complete Streets, go to <http://www.completestreetsnc.org/>).