

Adopted by:

Town of Elkin
Date: January 9, 2012
Town of Jonesville
Date: February 13, 2012
Surry County
Date: January 17, 2012
Yadkin County
Date: March 6, 2012
NCDOT
Date: April 5, 2012

Endorsed by:

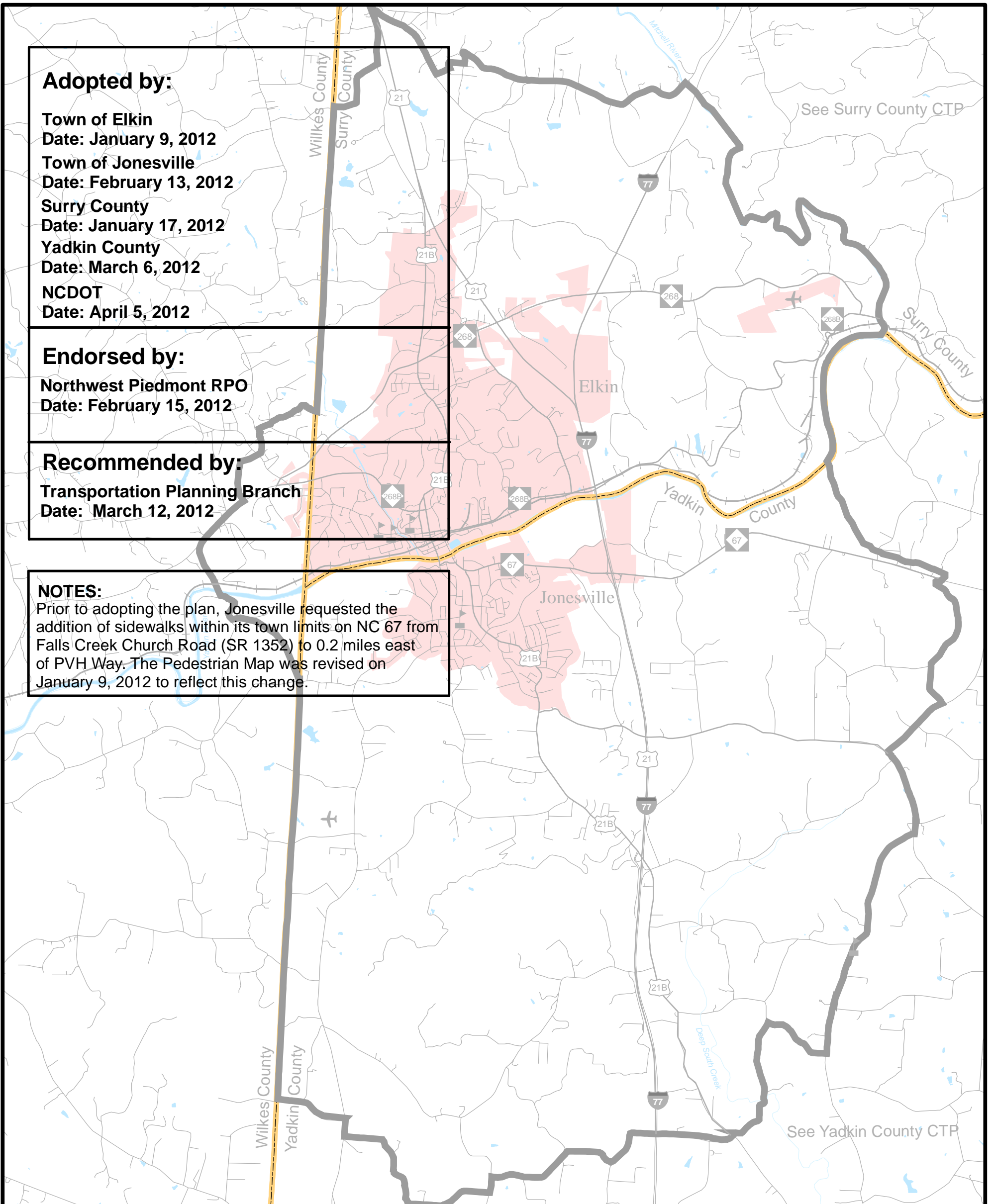
Northwest Piedmont RPO
Date: February 15, 2012

Recommended by:

Transportation Planning Branch
Date: March 12, 2012

NOTES:

Prior to adopting the plan, Jonesville requested the addition of sidewalks within its town limits on NC 67 from Falls Creek Church Road (SR 1352) to 0.2 miles east of PVH Way. The Pedestrian Map was revised on January 9, 2012 to reflect this change.



Sheet 1 Adoption Sheet


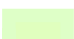


Sheet 2 Highway Map

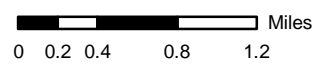
Sheet 3 Public Transportation and Rail Map

Sheet 4 Bicycle Map

Sheet 5 Pedestrian Map

Legend

-  Schools
-  Airports
-  Roads
-  Railroads
-  Rivers and Streams
-  Municipal Boundary
-  National Forest
-  Planning Boundary
-  County Boundary



Sheet 1 of 5

Base map date: August 2011

Refer to CTP document for more details



Elkin/Jonesville

Surry/Yadkin County
North Carolina

**Comprehensive
Transportation Plan**

Plan date: December 12, 2011
Revised: January 9, 2012