

## Highway Map

# French Broad River MPO

## Comprehensive Transportation Plan

Plan date: November 15, 2007

### Freeways

- Existing
- Needs Improvement
- Recommended

### Expressways

- Existing
- Needs Improvement
- Recommended

### Boulevards

- Existing
- Needs Improvement
- Recommended

### Other Major Thoroughfares

- Existing
- Needs Improvement
- Recommended

### Minor Thoroughfares

- Existing
- Needs Improvement
- Recommended

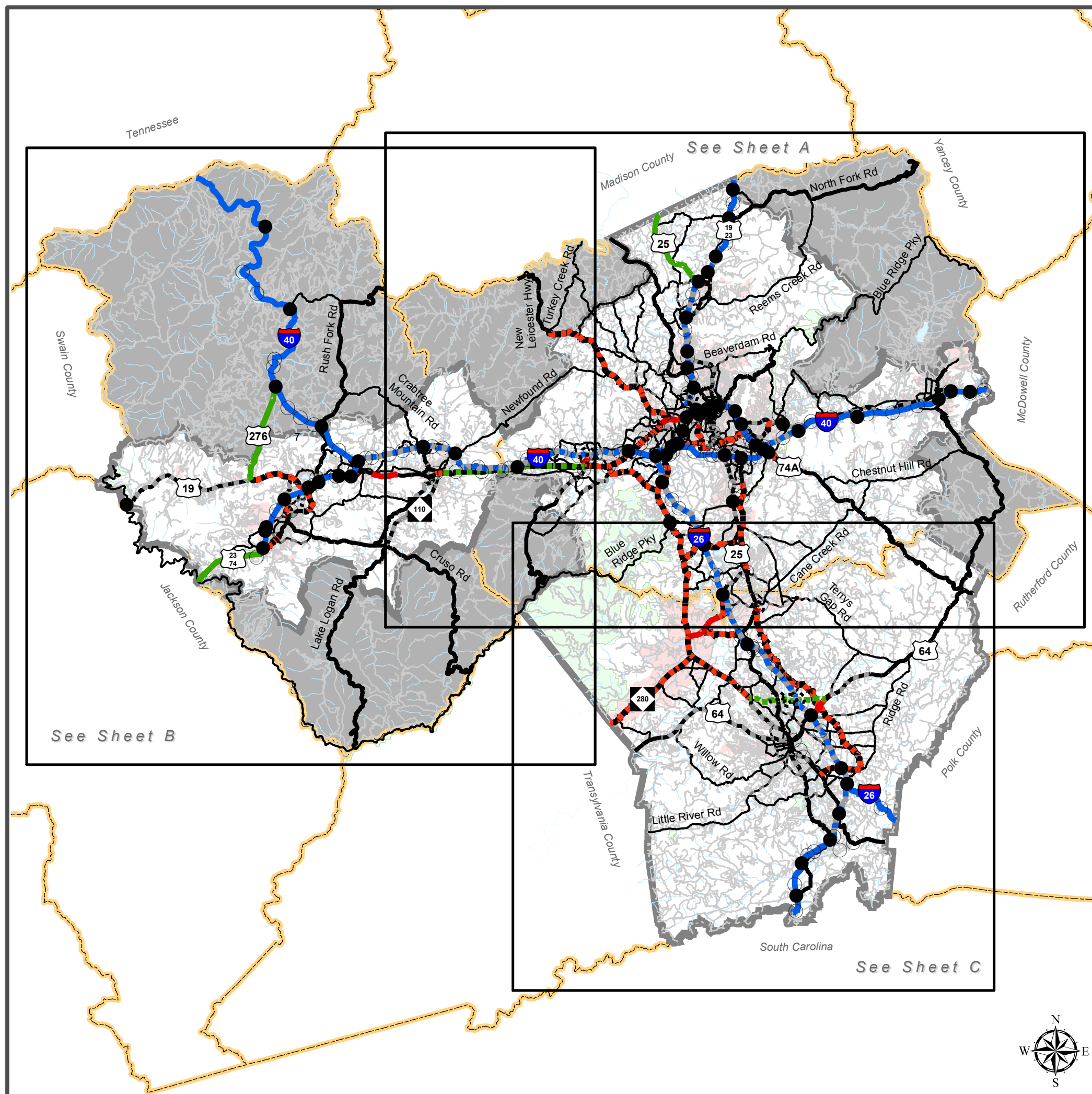
- Existing Interchange
- Proposed Interchange
- Existing Grade Separation
- Proposed Grade Separation

0 1 2 4 6 8 10 Miles

Sheet 2 of 5

Base map date: October 15, 2004

Refer to CTP document for more details



# Highway Map

## French Broad River MPO

### Buncombe County

## Comprehensive Transportation Plan

Plan date: November 15, 2007

#### Freeways

- Existing
- Needs Improvement
- Recommended

#### Expressways

- Existing
- Needs Improvement
- Recommended

#### Boulevards

- Existing
- Needs Improvement
- Recommended

#### Other Major Thoroughfares

- Existing
- Needs Improvement
- Recommended

#### Minor Thoroughfares

- Existing
- Needs Improvement
- Recommended

Existing Interchange

Proposed Interchange

Existing Grade Separation

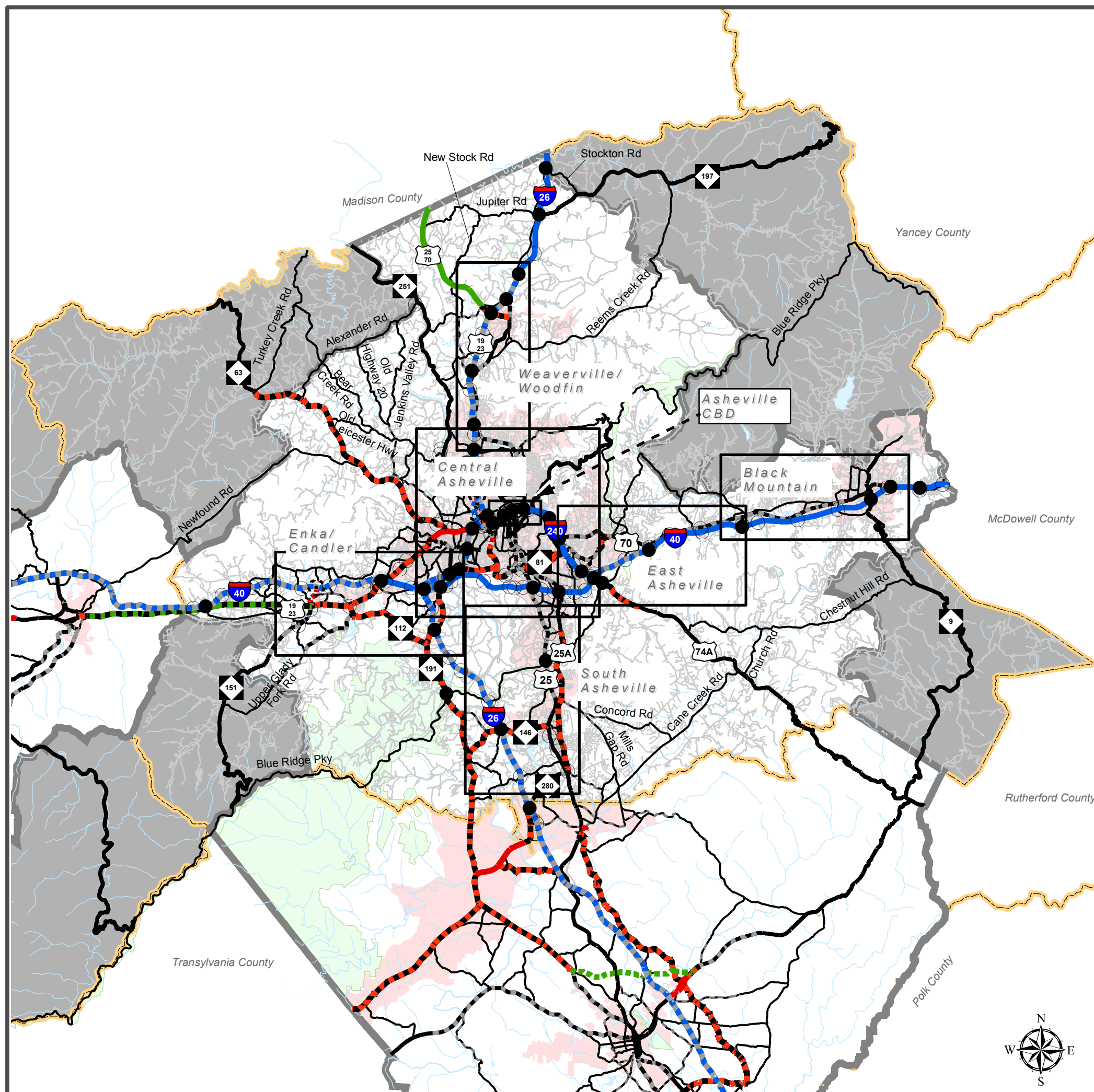
Proposed Grade Separation

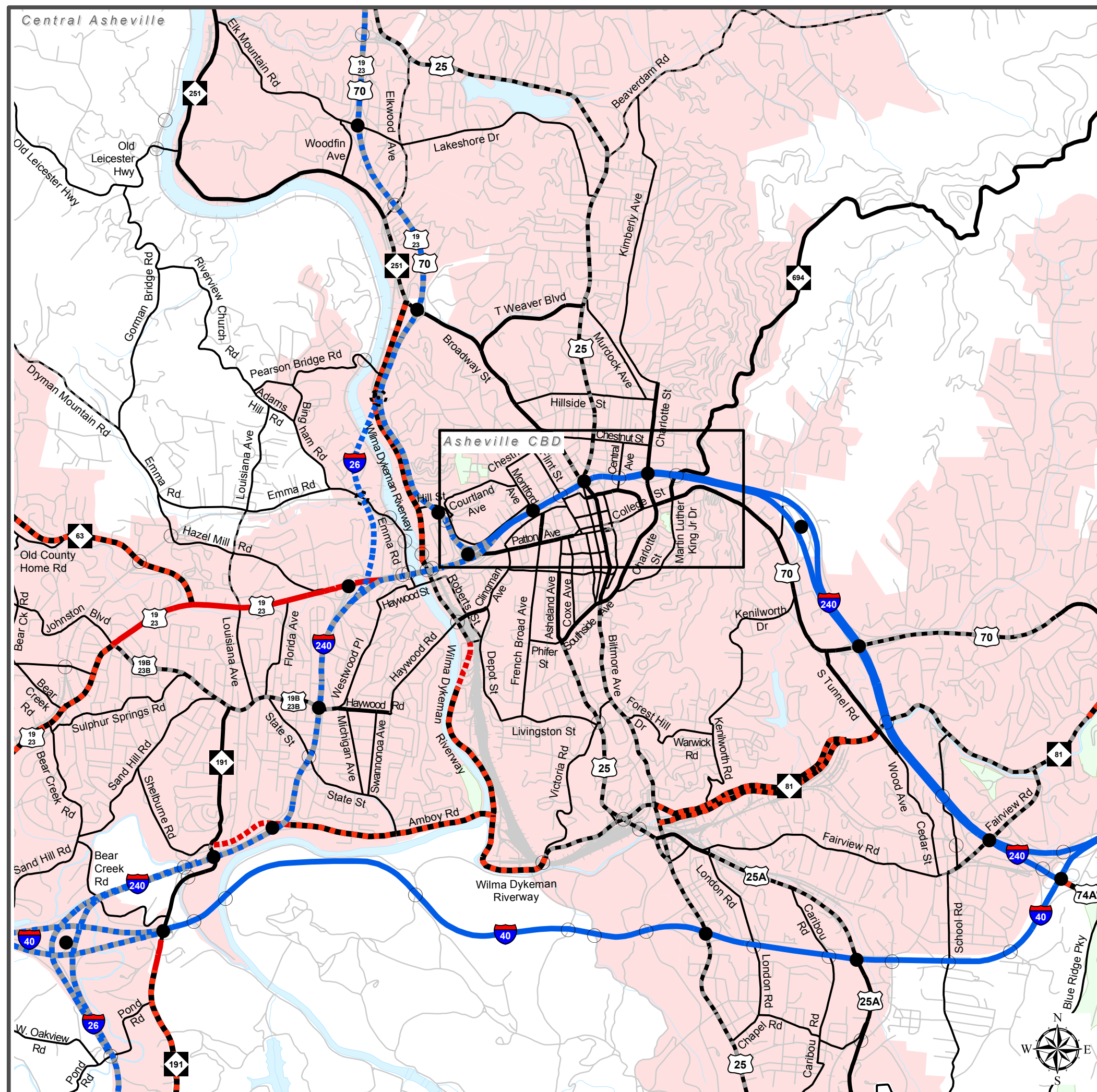
0 0.5 1 2 3 4 5 Miles

Sheet 2A of 5

Base map date: October 15, 2004

Refer to CTP document for more details





## Highway Map

# French Broad River MPO

## Buncombe County

## Comprehensive Transportation Plan

Plan date: November 15, 2007

### Freeways

- Existing
- Needs Improvement
- Recommended

### Expressways

- Existing
- Needs Improvement
- Recommended

### Boulevards

- Existing
- Needs Improvement
- Recommended

### Other Major Thoroughfares

- Existing
- Needs Improvement
- Recommended

### Minor Thoroughfares

- Existing
- Needs Improvement
- Recommended

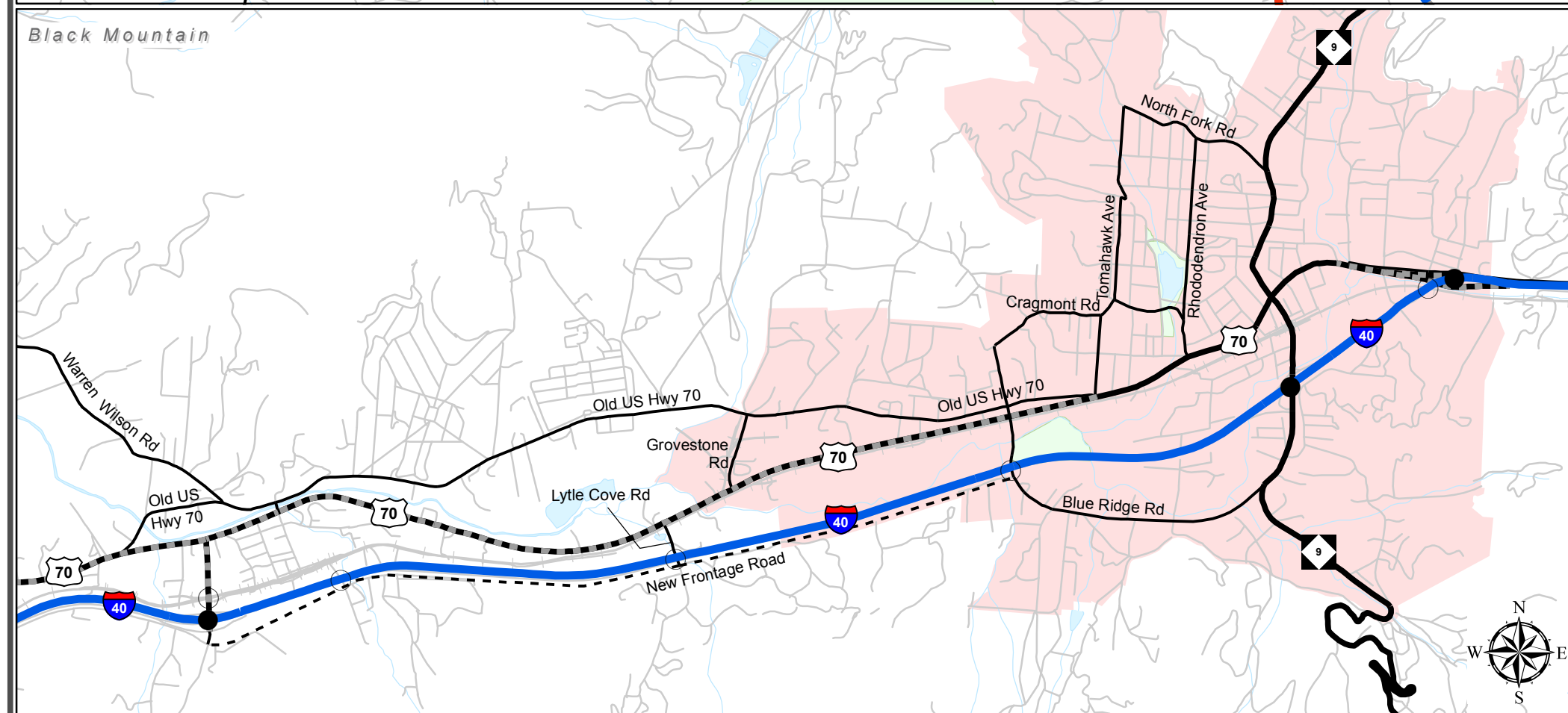
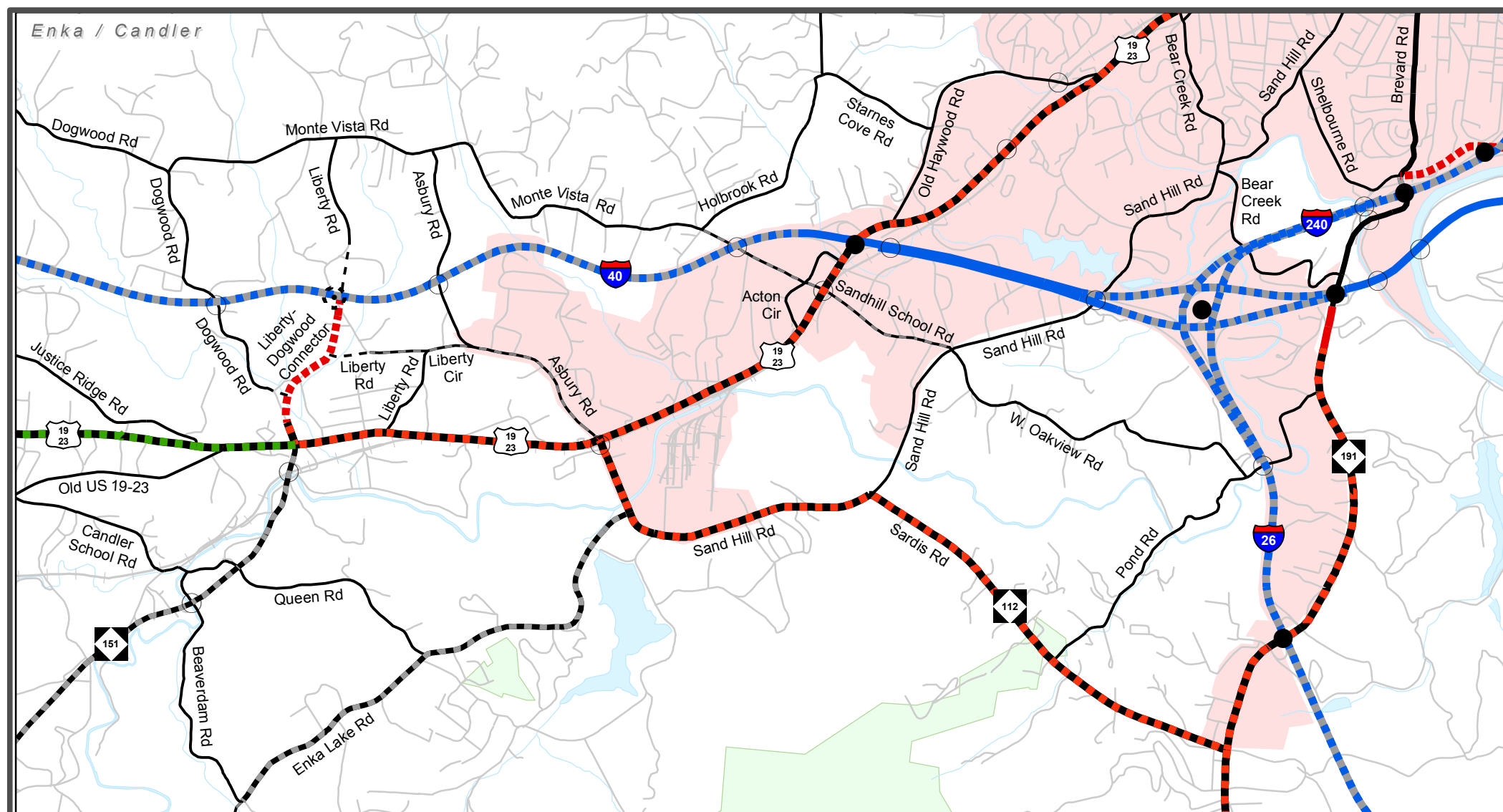
- Existing Interchange
- Proposed Interchange
- Existing Grade Separation
- Proposed Grade Separation

0 0.25 0.5 1 Miles

Sheet 2A of 5  
Inset Sheet 2A-1

Base map date: October 15, 2004

Refer to CTP document for more details



## Highway Map

# French Broad River MPO

## Buncombe County

## Comprehensive Transportation Plan

Plan date: November 15, 2007

### Freeways

- Existing
- - - Needs Improvement
- . . . Recommended

### Expressways

- Existing
- - - Needs Improvement
- . . . Recommended

### Boulevards

- Existing
- - - Needs Improvement
- . . . Recommended

### Other Major Thoroughfares

- Existing
- - - Needs Improvement
- . . . Recommended

### Minor Thoroughfares

- Existing
- - - Needs Improvement
- . . . Recommended

● Existing Interchange

⊙ Proposed Interchange

○ Existing Grade Separation

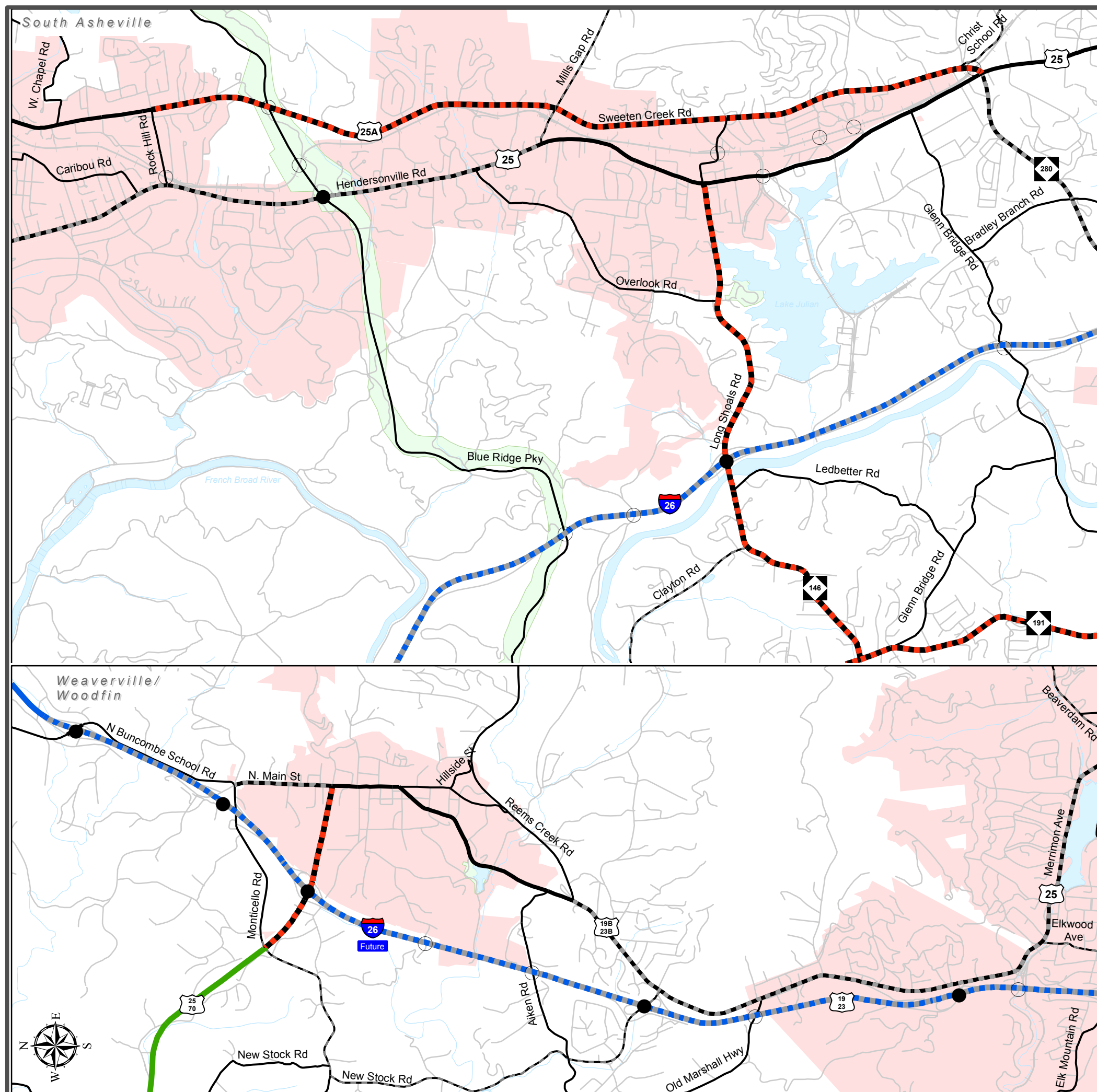
⊙ Proposed Grade Separation

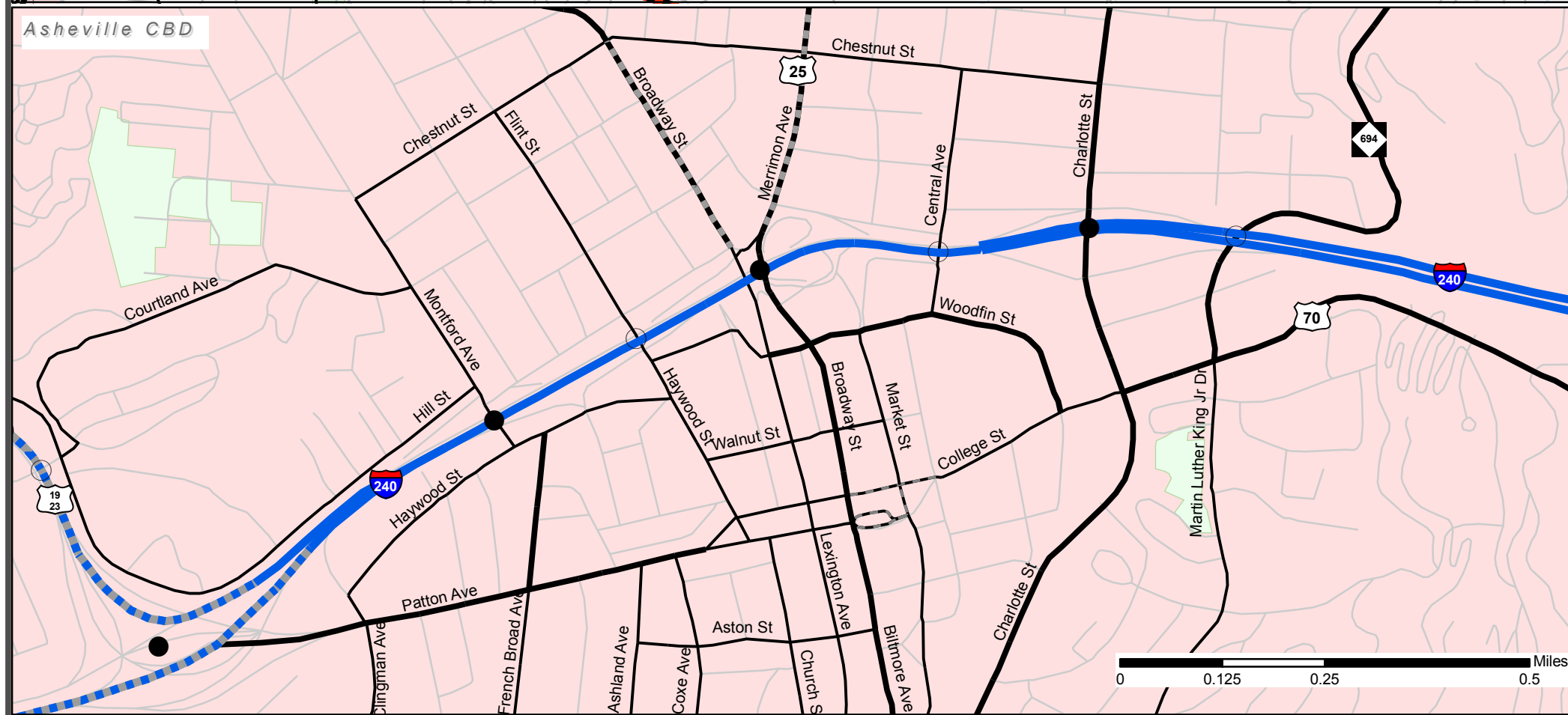
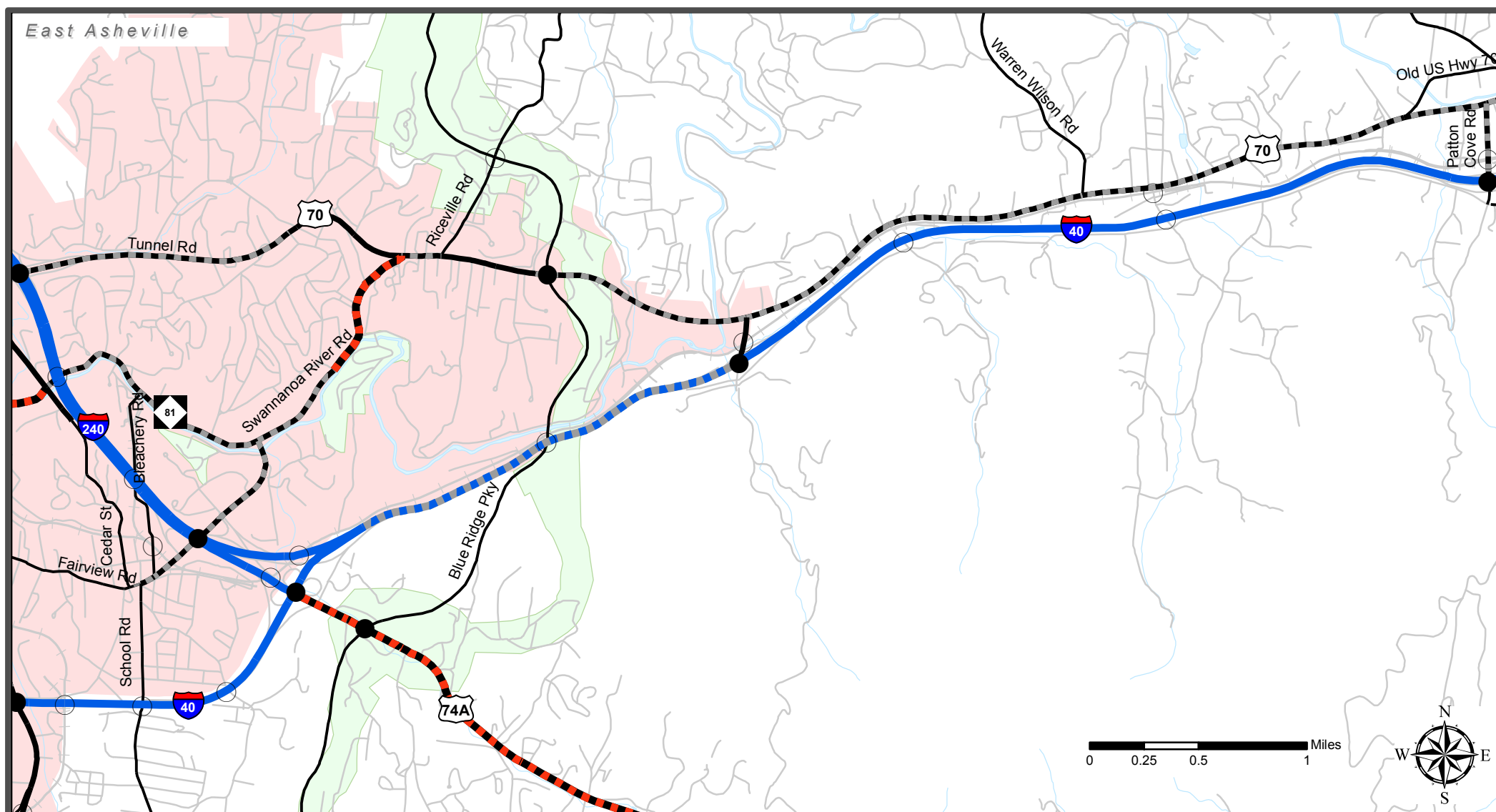
0 0.25 0.5 1 Miles

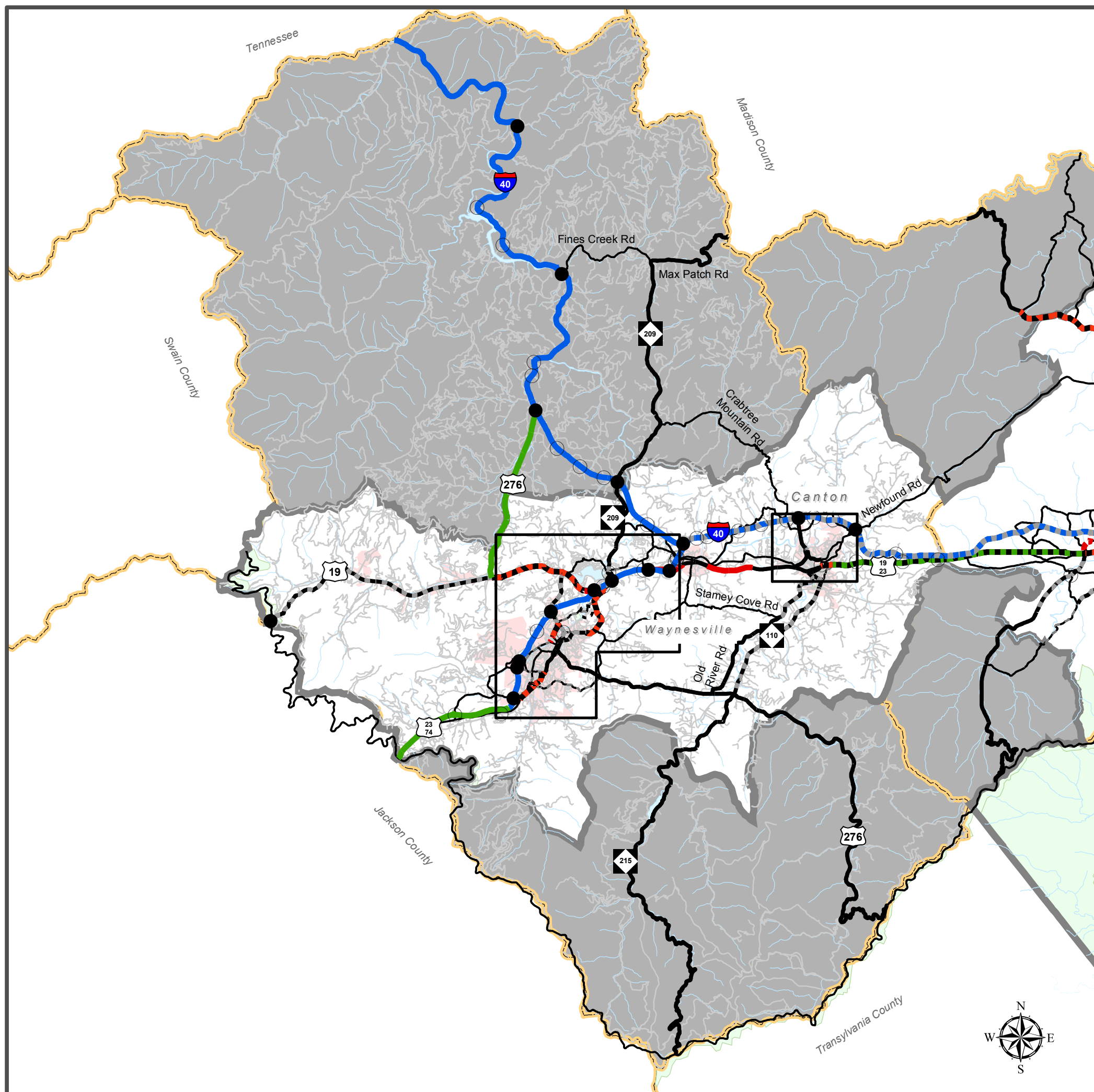
Sheet 2A of 5  
Inset Sheet 2A-2

Base map date: October 15, 2004

Refer to CTP document for more details







## Highway Map

# French Broad River MPO

## Haywood County

## Comprehensive Transportation Plan

Plan date: November 15, 2007

### Freeways

- Existing
- Needs Improvement
- Recommended

### Expressways

- Existing
- Needs Improvement
- Recommended

### Boulevards

- Existing
- Needs Improvement
- Recommended

### Other Major Thoroughfares

- Existing
- Needs Improvement
- Recommended

### Minor Thoroughfares

- Existing
- Needs Improvement
- Recommended

- Existing Interchange
- Proposed Interchange
- Existing Grade Separation
- Proposed Grade Separation

0 0.5 1 2 3 4 5 Miles

Sheet 2B of 5

Base map date: October 15, 2004

Refer to CTP document for more details

# Highway Map

## French Broad River MPO

### Haywood County

## Comprehensive Transportation Plan

Plan date: November 15, 2007

#### Freeways

- Existing
- Needs Improvement
- Recommended

#### Expressways

- Existing
- Needs Improvement
- Recommended

#### Boulevards

- Existing
- Needs Improvement
- Recommended

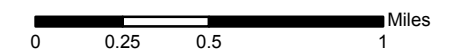
#### Other Major Thoroughfares

- Existing
- Needs Improvement
- Recommended

#### Minor Thoroughfares

- Existing
- Needs Improvement
- Recommended

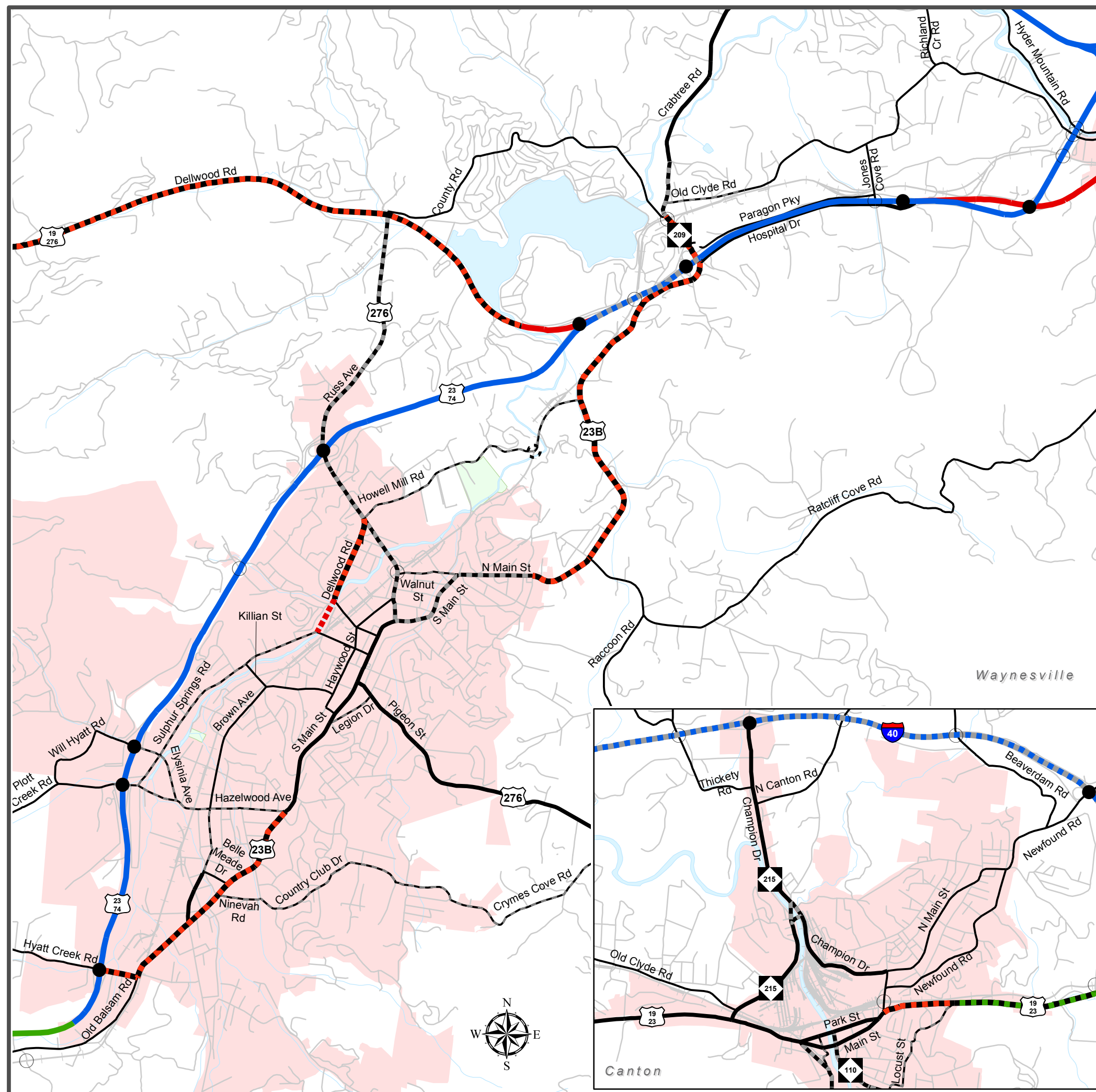
- Existing Interchange
- Proposed Interchange
- Existing Grade Separation
- Proposed Grade Separation



Sheet 2B of 5  
Inset Sheet 2B-1

Base map date: October 15, 2004

Refer to CTP document for more details



# Highway Map

## French Broad River MPO

### Henderson County

## Comprehensive Transportation Plan

Plan date: November 15, 2007

#### Freeways

- Existing
- Needs Improvement
- Recommended

#### Expressways

- Existing
- Needs Improvement
- Recommended

#### Boulevards

- Existing
- Needs Improvement
- Recommended

#### Other Major Thoroughfares

- Existing
- Needs Improvement
- Recommended

#### Minor Thoroughfares

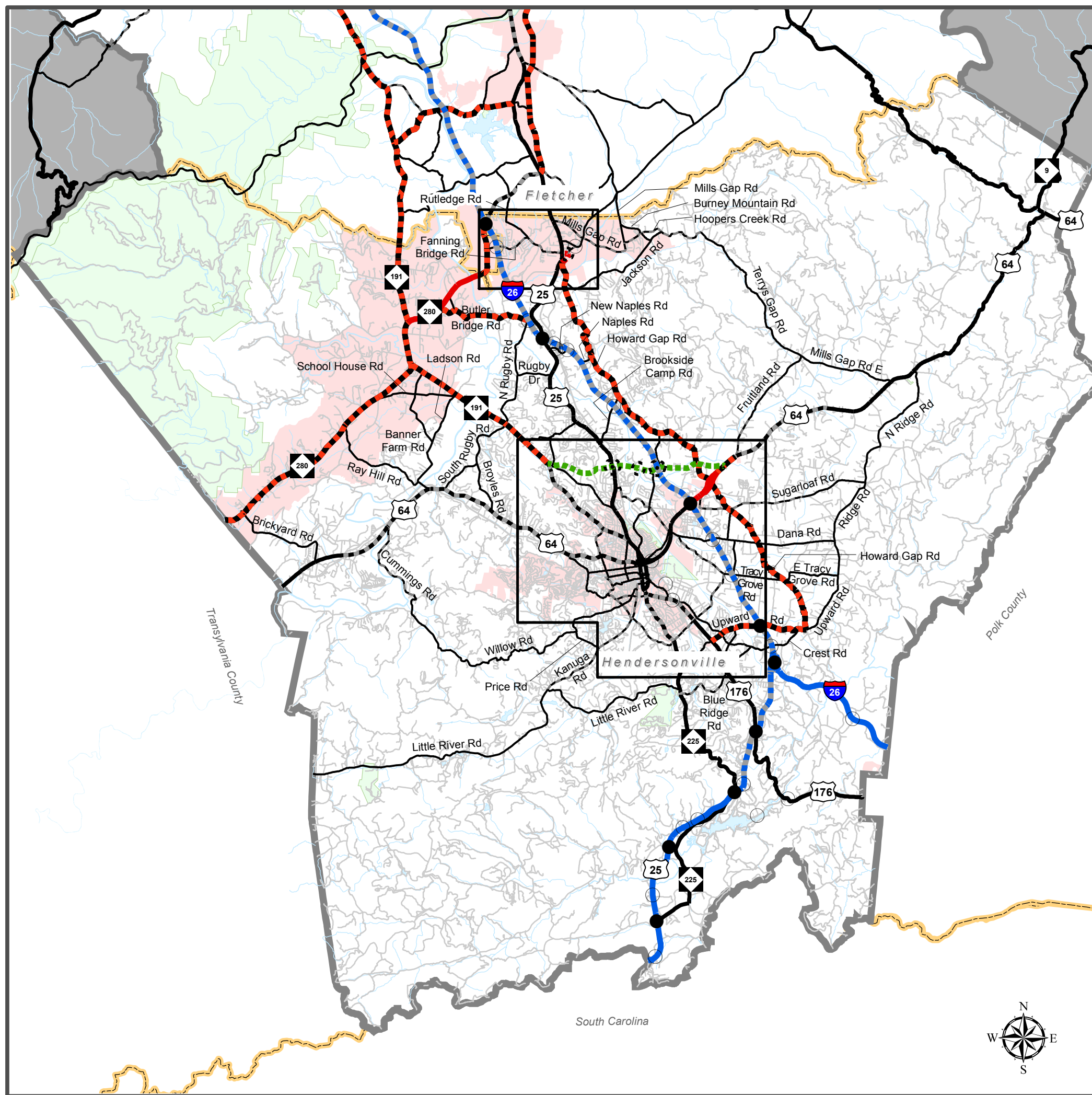
- Existing
- Needs Improvement
- Recommended

- Existing Interchange
- Proposed Interchange
- Existing Grade Separation
- Proposed Grade Separation

0 0.5 1 2 3 4 5 Miles

Sheet 2C of 5

Base map date: October 15, 2004  
Refer to CTP document for more details



# Highway Map

## French Broad River MPO

### Henderson County

## Comprehensive Transportation Plan

Plan date: November 15, 2007

#### Freeways

- Existing
- Needs Improvement
- Recommended

#### Expressways

- Existing
- Needs Improvement
- Recommended

#### Boulevards

- Existing
- Needs Improvement
- Recommended

#### Other Major Thoroughfares

- Existing
- Needs Improvement
- Recommended

#### Minor Thoroughfares

- Existing
- Needs Improvement
- Recommended

- Existing Interchange
- Proposed Interchange
- Existing Grade Separation
- Proposed Grade Separation

Sheet 2C of 5  
Inset Sheet 2C-1

Base map date: October 15, 2004  
Refer to CTP document for more details

