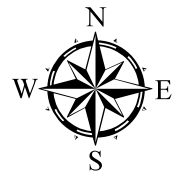
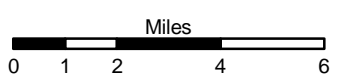


CAMPO Area is subject to change with an update of the CAMPO CTP, which is underway.

Capital Area Metropolitan Planning Organization

Bus Routes	Rail Corridor	Intermodal Connector
Existing	Active	Existing
Needs Improvement	Inactive	Recommended
Recommended	Recommended	
Fixed Guideway	High Speed Rail Corridor	Rail Stops
Existing	Existing	Existing
Needs Improvement	Recommended	Recommended
Recommended		
Operational Strategies	Park and Ride Lot	
Existing	Existing	
Needs Improvement	Recommended	
Recommended		

NOTE: Locations of park and ride lots are approximate and subject to change.



Sheet 3 of 5

Base map date: April, 2009

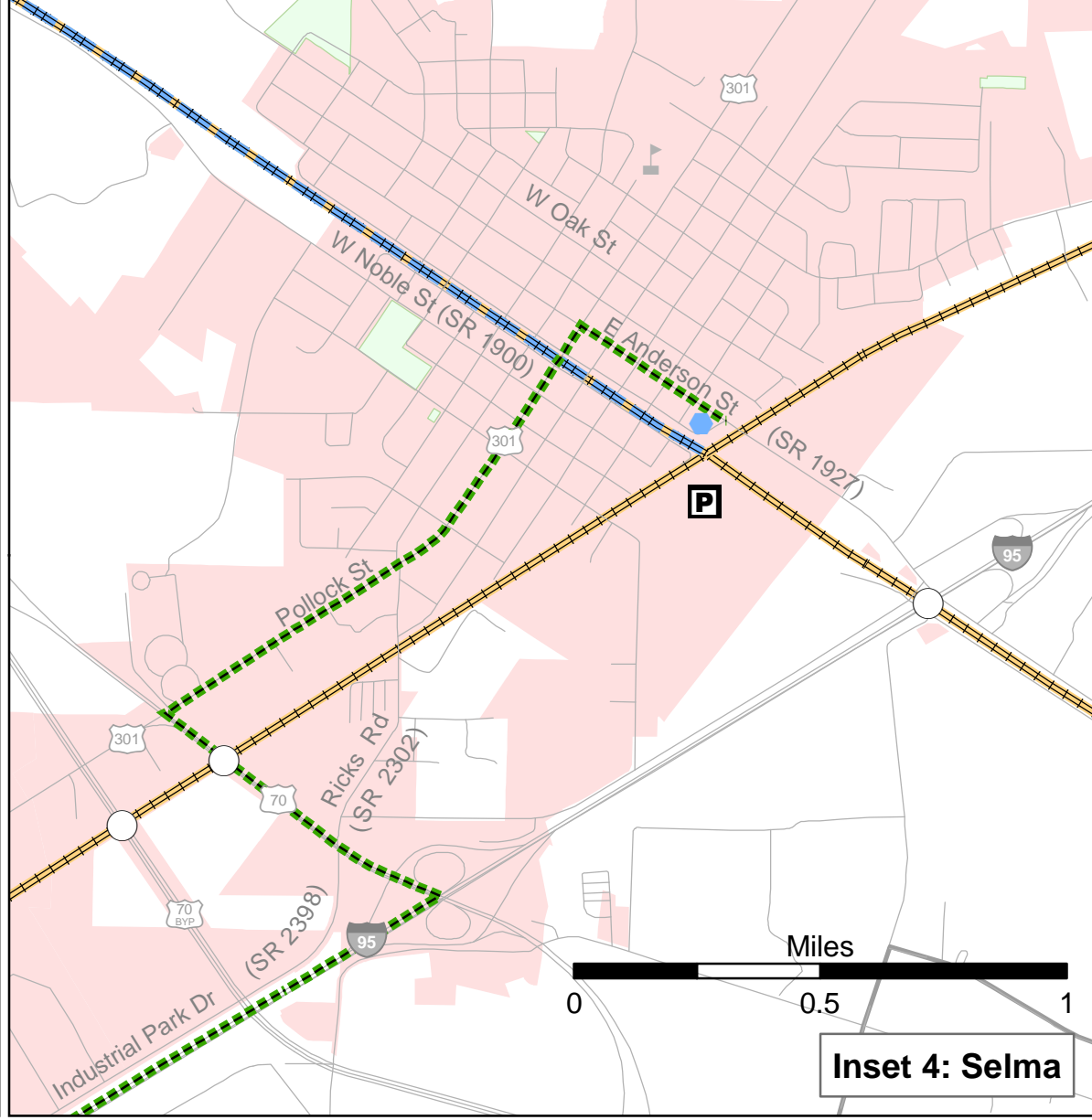
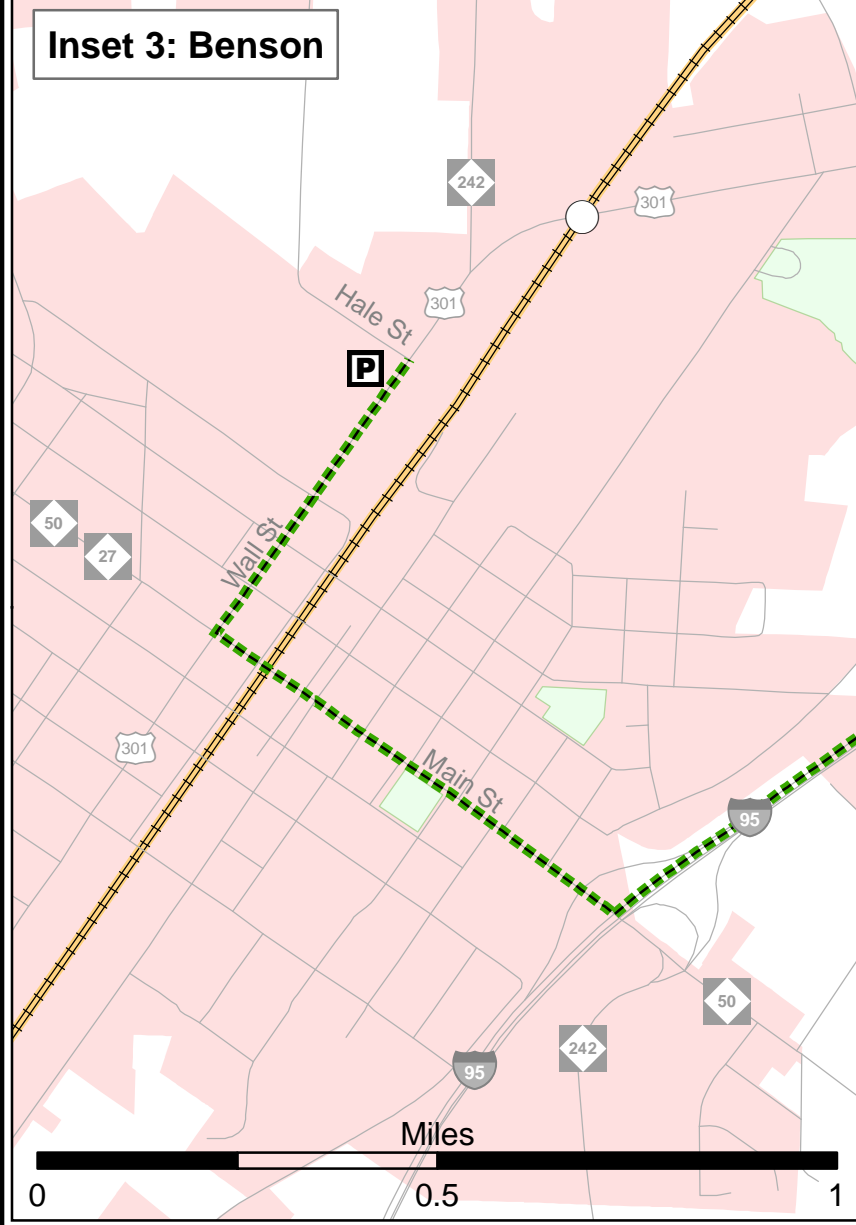
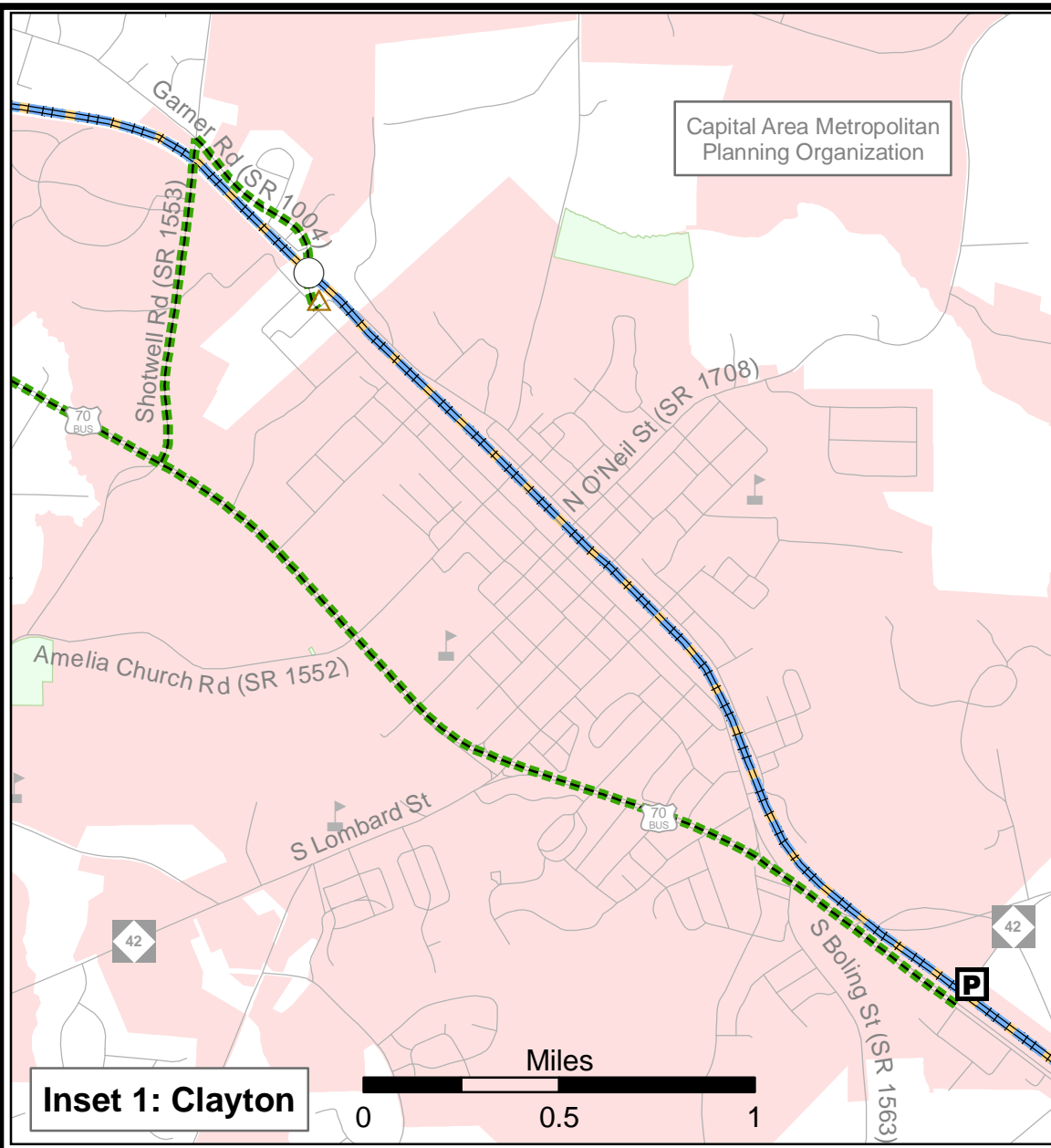
Refer to CTP document for more details

Public Transportation and Rail Map



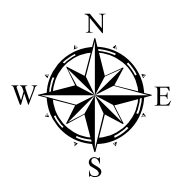
Johnston County Comprehensive Transportation Plan

Plan date: July 7, 2011



Bus Routes	Rail Corridor	Intermodal Connector
Existing	Active	Existing
Needs Improvement	Inactive	Recommended
Recommended	Recommended	
Fixed Guideway	High Speed Rail Corridor	Rail Stops
Existing	Existing	Existing
Needs Improvement	Recommended	Recommended
Recommended		
Operational Strategies	Park and Ride Lot	
Existing	Existing	
Needs Improvement	Recommended	
Recommended		

NOTE: Locations of park and ride lots are approximate and subject to change.



Sheet 3A of 5

Base map date: April, 2009

Refer to CTP document for more details

Public Transportation and Rail Map Insets 1, 2, 3, & 4



Johnston County Comprehensive Transportation Plan

Plan date: July 7, 2011