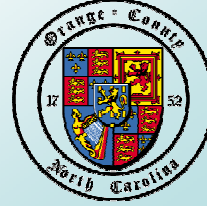


Orange County Comprehensive Transportation Plan



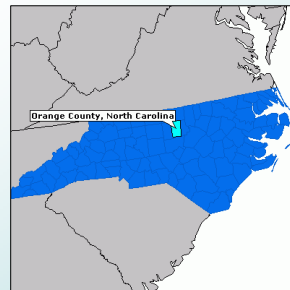
NCDOT Transportation
Planning Branch

September 15, 2009



Previous Transportation Planning in Study Area

- Orange County Thoroughfare Plan – study completed in 1990, but never adopted
- Durham-Chapel Hill-Carrboro MPO is currently working on a study for their area, which includes the municipalities of Chapel Hill and Hillsborough
 - We are coordinating with the DCHC study



Updated Long Range Planning Process

Thoroughfare Plan

The Old Way –
Highway Intensive



Comprehensive Transportation Plan (CTP)

The NEW WAY!

~Multi-modal~



What is a CTP?

(Comprehensive Transportation Plan)

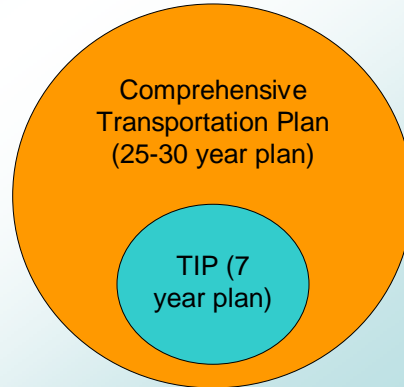
- A long-range, multi-modal transportation plan
- Developed cooperatively with NCDOT, the local planning organizations, and representatives from the county and its municipalities
- Emphasizes incorporating local land use plans and community goals
- Adopted at 3 levels – local (county/municipalities), regional (MPO/RPO), and state (NCDOT)



How is a CTP used in an RPO?

➔ Projects would be selected from a CTP for inclusion in the Transportation Improvement Program (TIP)

- The CTP has a 25-30 year time span and is not fiscally constrained
- TIP is a 7-year planning document and funding schedule, adopted by NCDOT Board of Transportation
- Please note – the TIP process is currently being modified.



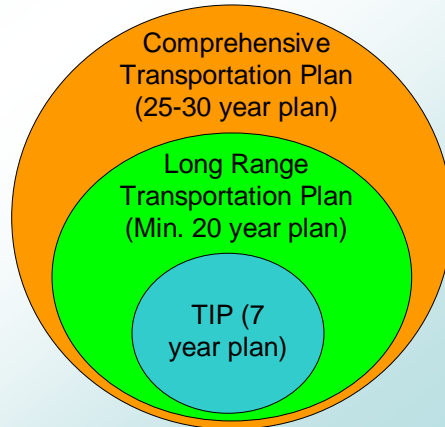
Triangle Area RPO (TARPO) Boundaries



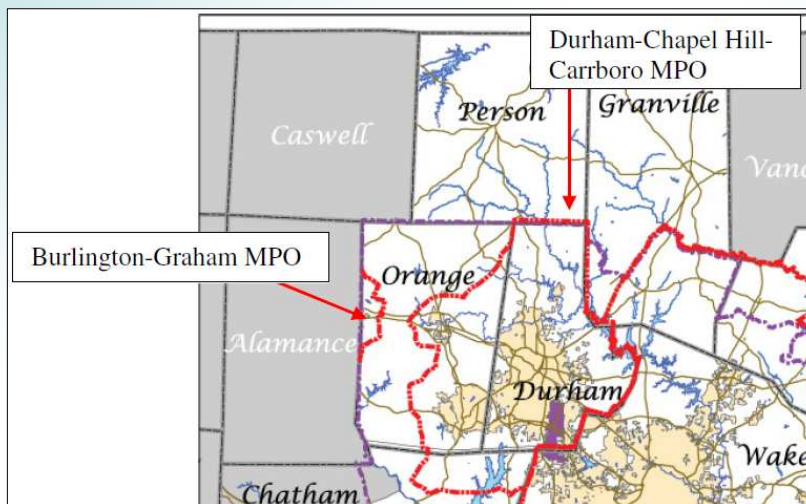
How is a CTP used in an MPO?

➔ Projects would be selected from a CTP for inclusion in the Long Range Transportation Plan (LRTP), then further selected for inclusion in the Transportation Improvement Program (TIP)

- Adds LRTP into the same process as with an RPO
- The LRTP is the fiscally constrained portion of the CTP, has a minimum 20 year time span, and is adopted by the MPO's Transportation Advisory Committee
- Please note – the TIP process is currently being modified.



Durham-Chapel Hill-Carrboro MPO (DCHC) & Burlington-Graham MPO (BGMPO) Boundaries



Components of a CTP

- Emphasis on multi-modal
 - Highway
 - Public Transportation and Rail
 - Bicycle and Pedestrian
(ex. greenways such as Mountains to the Sea trail)



Components of a CTP (cont.)

- Map set and written report
- Recommendations
 - For each mode
 - Existing, Needs Improvement, Recommended
 - Highway categories broken down further:
 - Freeways, Expressways, Boulevards, Other Major Thoroughfares, Minor Thoroughfares
(see end of presentation for detailed examples and information)

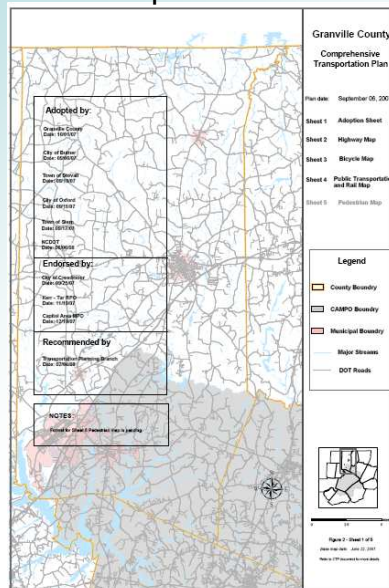
Components of a CTP (cont.)

- Strategic Highway Corridors
 - Ultimate vision for maintaining statewide mobility - specifically identifies the desired facility type for each corridor
 - Impact on our study area:
 - ☑ I-40/I-85 – Freeway
 - NC 86 – Upgrade to Expressway
(four-lane with minimal driveways / at-grade intersections; see example at end of presentation)

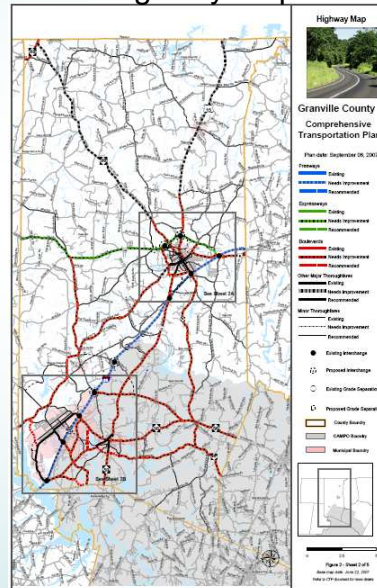


Example CTP

Adoption Sheet



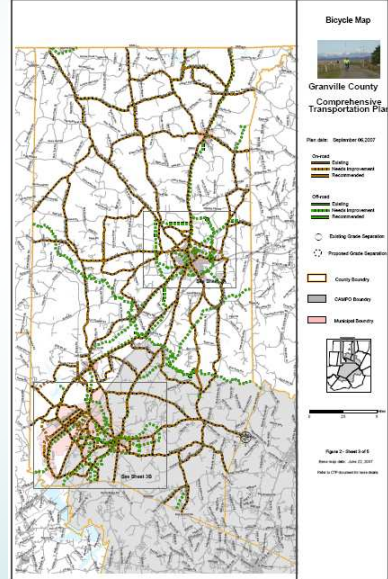
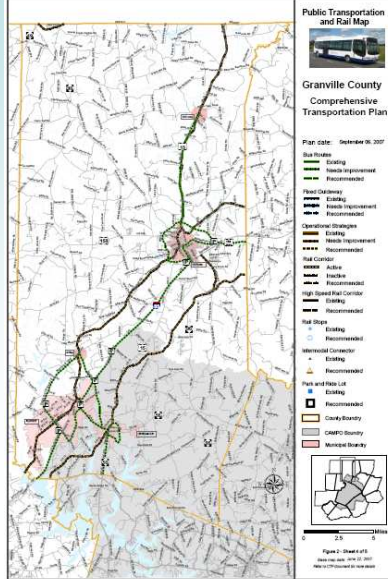
Highway Map



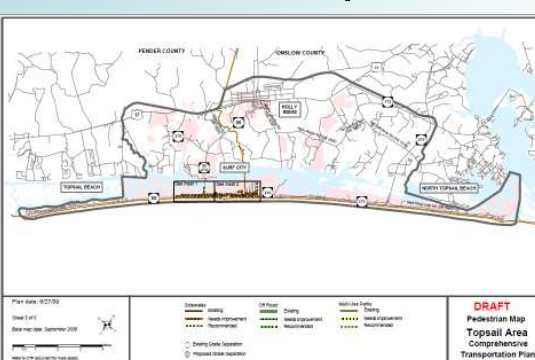
Example CTP (cont.)

Public Transportation / Rail Map

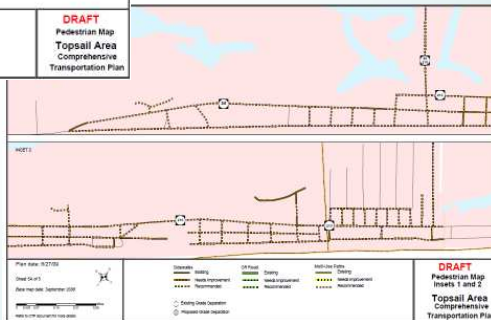
Bicycle Map



Example CTP (cont.)



Pedestrian Map

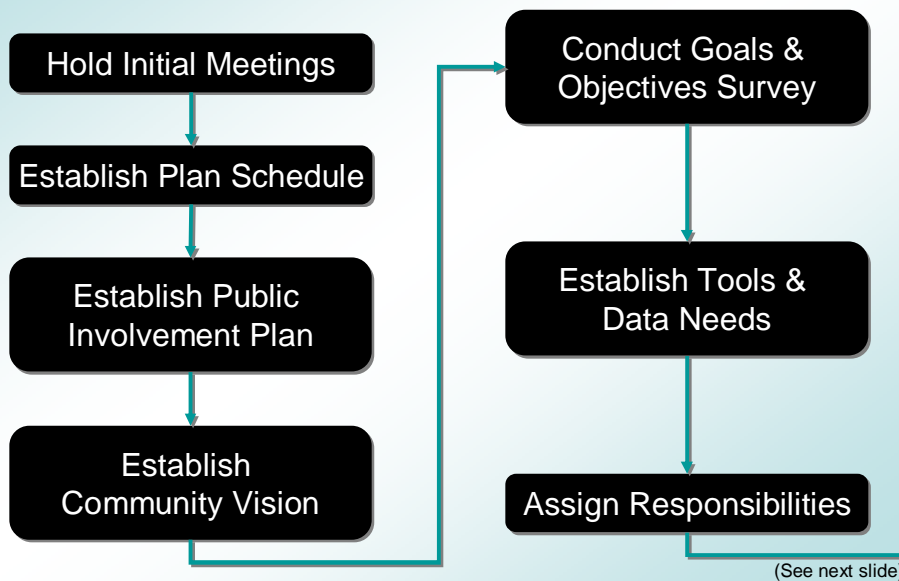


Benefits of a CTP

- **Common, cohesive future transportation** vision among the county, its municipalities, NCDOT, and the planning organizations
- Emphasis on incorporation of **local priorities**, local land use plans, **community goals**, and statewide goals (Strategic Highway Corridors)
- Customer-friendly documentation
- Emphasis on **multiple modes of transportation** eases travel demand and allows travelers more choices
- Anticipates and addresses **future traffic** demand
- Well-informed public
- Corridor protection for future growth needs

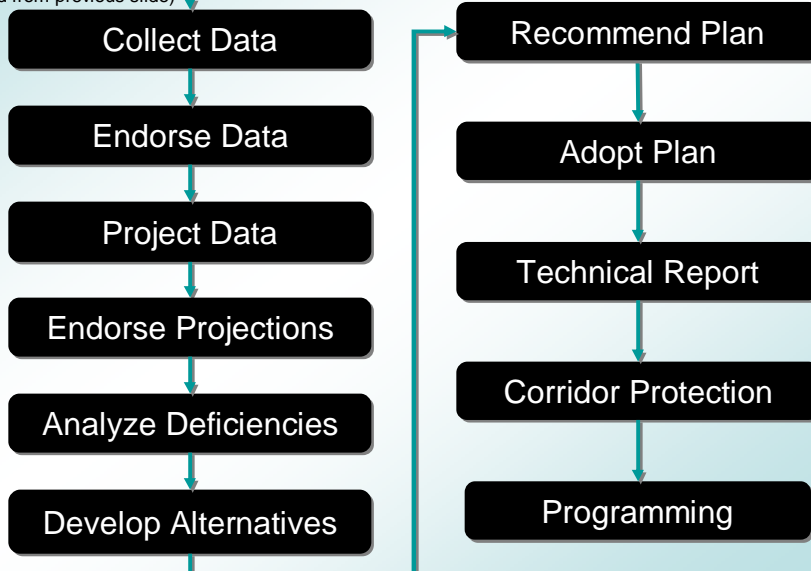


Transportation Planning Process



Transportation Planning Process

(Continued from previous slide)



Progress/Next Steps

- Committee progress
 - ☑ Vision Statement/Goals and Objectives
 - ☑ Modeled Roadways map
 - ☑ Public survey and distribution plan
 - Currently: public awareness meeting plans
 - Currently: data collection and projection
 - Next committee meeting – September 16
- Items
 - Public Survey
 - Go-Live date of September 16, pending approval
 - Open through October 31
 - Timeline
 - Public awareness meeting



Thank you! Questions?

Orange County CTP Website:

<http://www.ncdot.org/doh/preconstruct/tpb/planning/orangecounty.html>

Sarah Ezzell

Transportation Engineer I
NCDOT TPB
(919) 733-4705
swezzell@ncdot.gov

Scott Walston

Triangle Unit Supervisor
NCDOT TPB
(919) 733-4705
swalston@ncdot.gov



Paul Black

Transportation Planner
Triangle RPO
(919) 558-9397
pblack@tjcog.org

Andy Henry

Transportation Planner
DCHC MPO
(919) 560-4366
andrew.henry@durhamnc.gov

More info at www.ncdot.org/~tpb

Highway Categories...

Freeway Facility



US 74 Near Waynesville



US 264 East of I-95

- High mobility, low access
- 55mph or greater
- Cross section: minimum 4 lanes with median
- Connections provided only at interchanges; all cross streets are grade-separated
- Driveways not allowed
- Traffic signals not allowed
- Examples: I-40, I-95, US 64 from Rocky Mount to Williamston, US 1 from Raleigh to Sanford

Expressway Facility



US 221 (Marion Bypass)



US 220 in Rockingham County

- High mobility, low access
- 45 to 60 mph
- Cross section: minimum 4 lanes with median
- Connections at interchanges (major cross streets) and at-grade intersections (minor cross streets)
- Driveways limited in location and number, right-in/right-out only
- Traffic signals not allowed
- Examples: US 117 north of I-40, US 74 just east of I-277 in Charlotte

Boulevard Facility



US 70 East of Goldsboro



Cary Parkway

- Moderate mobility, moderate access
- 30 to 55mph
- Cross section: minimum 2 lanes with median
- Connections are at-grade intersections for most major and minor cross streets
- Driveways allowed – primarily right-in/right-out; consolidation and sharing access is encouraged
- Traffic signals allowed
- Examples: US 1 in Raleigh, NC 55 (Holly Springs Bypass), US 70 from Clayton to Garner

Major/Minor Thoroughfares



US 441 South of Dillsboro



US 13 North of Ahoskie

- Balanced mobility and access
- 25 to 55mph
- Cross section: minimum 2 lanes, no median; includes facilities with a continuous left turn lane
- Connections are at-grade intersections
- Driveways allowed with full movements; consolidate and share access when possible
- Traffic signals allowed
- Examples: NC 86 north of Hillsborough, US 64 in Siler City, US 70 in Kinston, NC 168 in Currituck County