

Adopted by:
Pitt County
Date: October 17, 2005

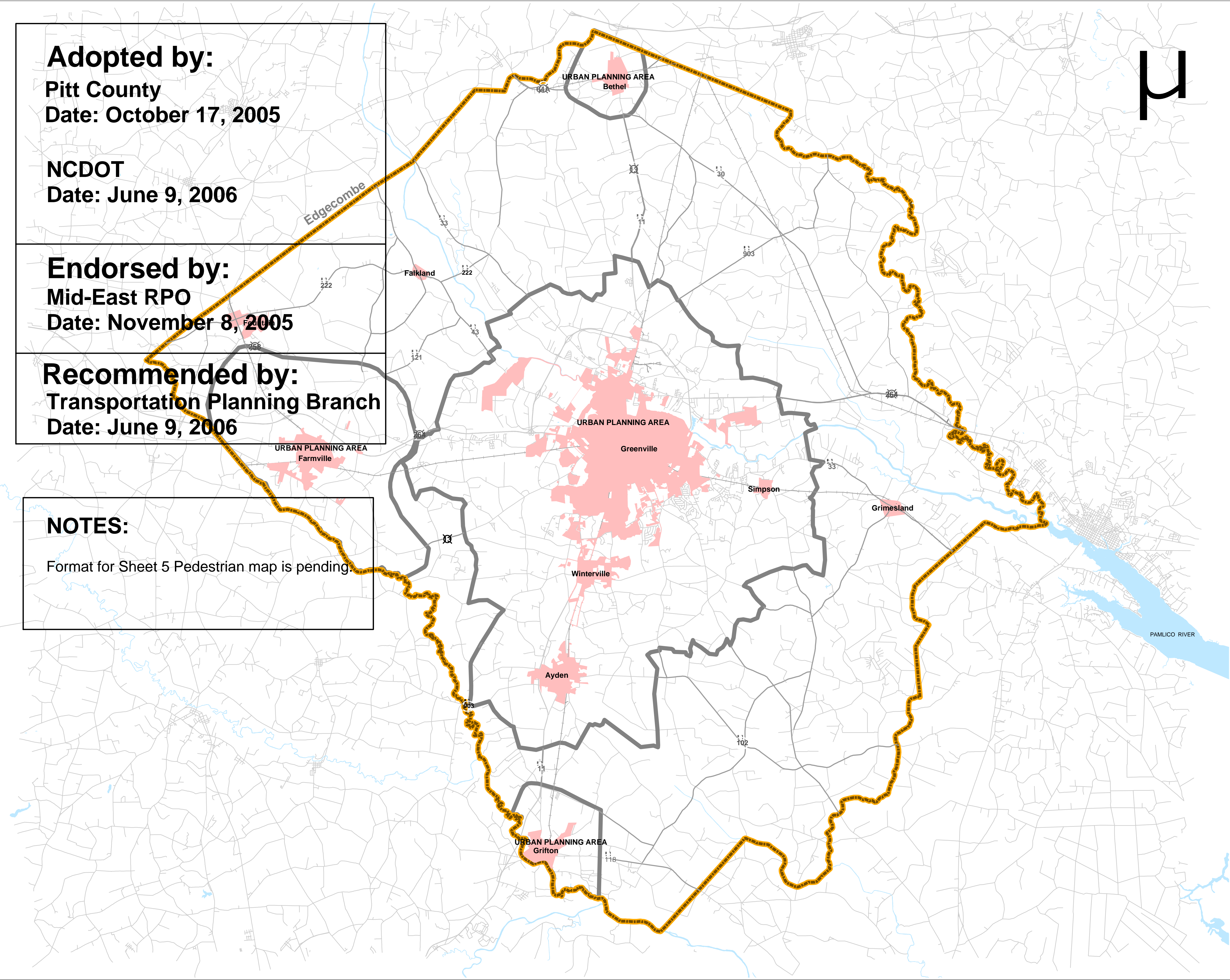
NCDOT
Date: June 9, 2006

Endorsed by:
Mid-East RPO
Date: November 8, 2005

Recommended by:
Transportation Planning Branch
Date: June 9, 2006

NOTES:

Format for Sheet 5 Pedestrian map is pending.



PITT COUNTY North Carolina

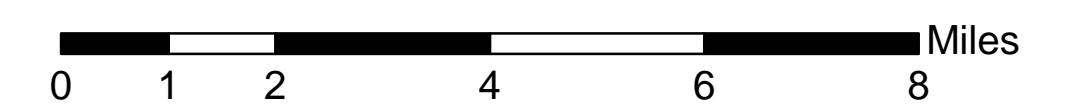
Comprehensive Transportation Plan

Plan date: 09/21/2005

- Sheet 1 Adoption Sheet
- Sheet 2 Highway Map
- Sheet 3 Public Transportation and Rail Map
- Sheet 4 Bicycle Map
- Sheet 5 Pedestrian Map

Legend

- Pitt County Planning Boundary
- Municipal Boundaries
- Urban Planning Area
- DOT Roads
- County Boundary



Sheet 1 of 4

Base map date: 3/01/05

Refer to CTP document for more details