

CADD NEWS

ISSUE
01

Volume 21

NCDIT Transportation CADD Services Newsletter

August 2021

New Year And Times are Changing

It has been over nine months since the last CADD News. It seems like a lot longer, not to mention that we live in a bit different of a world than we did then. Since then, most of have survived another seven months or so of Covid, hopefully you've been vaccinated and you may have even returned to the office (or maybe not). Anyway we are halfway through 2021 (which is hard to believe.

As of August 1, Bentley's Open X products (ORD, OBD, MicroStation Connect) are the software of choice for new projects. So as the NCDOT gears up for these new design tools you will also see training ramp up in August. CADD Services will be offering half day ProjectWise Basics courses along with two day MicroStation Connect Basics courses through out August. Moving forward you can also expect OpenRoads Designer training for both Roadway and Location and Survey users. So stay tuned it looks like it will be a very interesting and exciting summer and fall.

- the editor

"There are years that ask questions and years that answer."

- Zora Neale Hurston

In This Issue

- Connect Client
- Big Letters
- CADD Coordinators
- Bentley Advisors
- IPD 2.0
- Last Words



Inquiring minds want know what is happening with CADD at NCDOT

NC DIT
TRANSPORTATION
cadd services



Linn Cove Viaduct

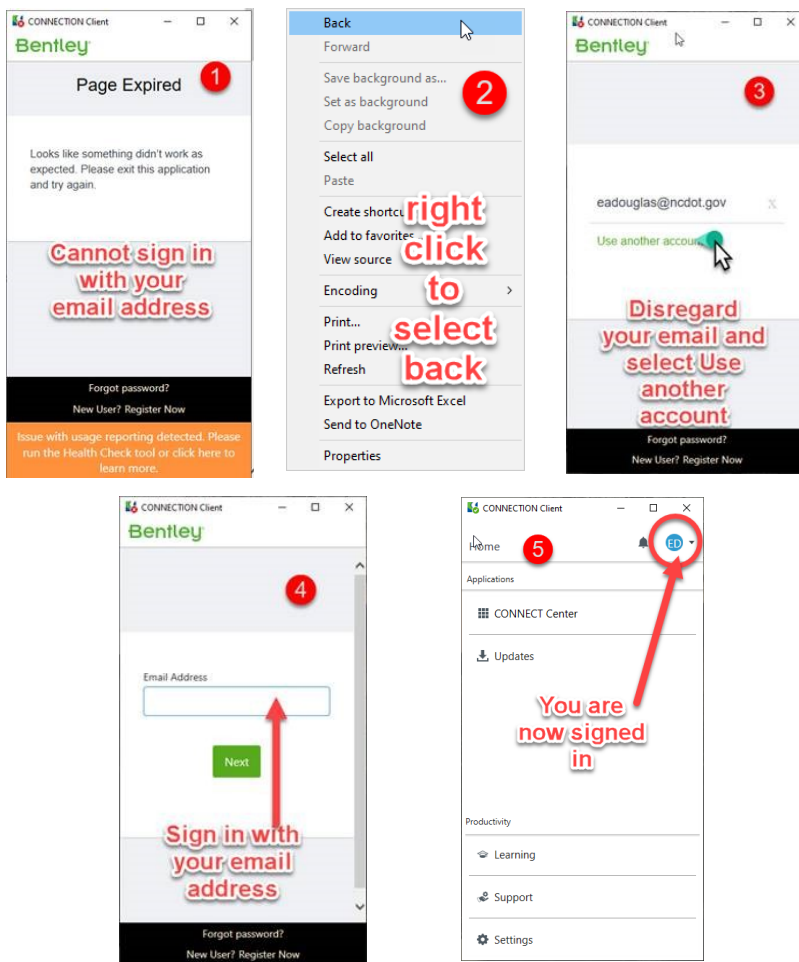


What is an Element Template?

An element template defines properties/ symbology of elements. Element templates should be created and maintained in DGN libraries

Issues with Bentley Connect client?

Having troubles logging into Bentley Connect Client?
Here is a tip from Eddie Douglas in Division 13.



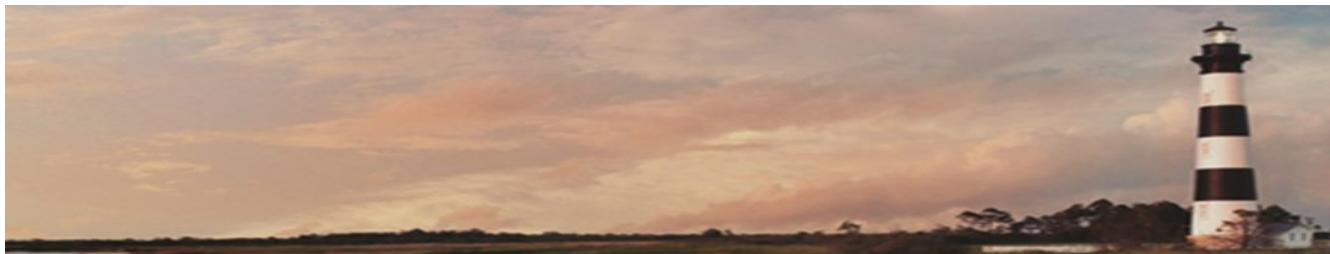
Feature Definition?



Feature Definitions are used to control symbology, annotation, and various other properties that are applied to geometric elements.

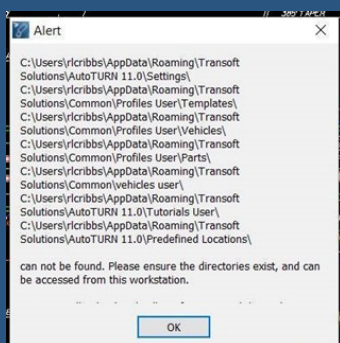
The feature definitions are used to:

- Define what the geometric elements actually are. What is being modeled



AutoTURN 11 Fix

If you get the follow-



ing error when trying to run AutoTURN:

Then do the following,

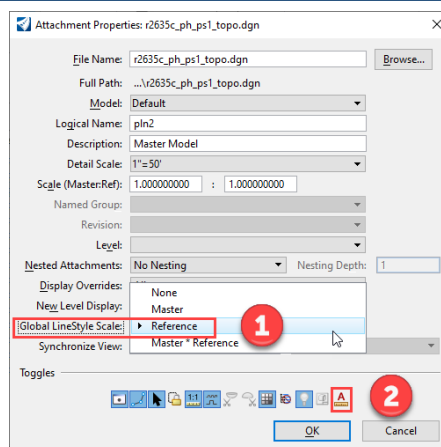
Go to your C:\Program Files\Transoft Solutions and double click the **AutoTURN Folders.bat** file and get back into your file and check out AutoTURN.

Big Letters?

This is a common issue users experience when referencing V8 files in CONNECT or vice versa. Remember that in V8 we've used the NCDOT Project Scale system (1"=50' à 1:50). In CONNECT we are using the Annotation/Drawing Scale system (1"=50' à 1:600). The difference between the two scaling systems affects the size of cells, notes, labels and custom line styles.

If you are referencing V8 files in CONNECT, you can remedy the scaling difference by:

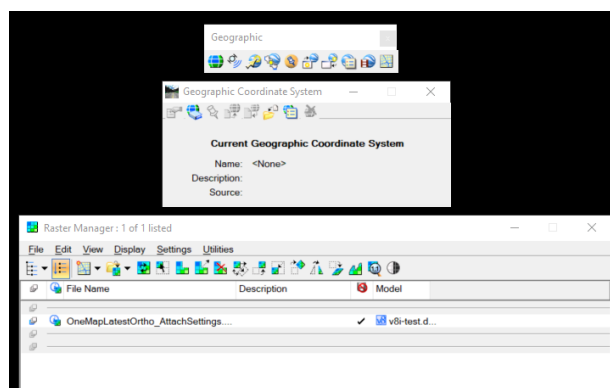
1. Change Global Line Style Scale from Master to Reference.
2. Turn off Annotation for the select reference file.



One Map Problem?

I am having trouble clipping One Map. I must have turned on or off a setting. I can attach One Map but when I try to clip the following is the error message I get:

"No elements found. Raster image is currently reprojected."



Try turning off your Geographic Coordinate System. It is first button in the Geographic toolbar.

This should allow you to apply a clip. You can reapply the Coordinate system after if needed.



Unit / Division	CADD Coordinator	Email Address
Environmental Analysis Unit	Tyler Stanton (backup) Dave Johnson (prime)*	tstanton@ncdot.gov ddjohnson@ncdot.gov
Feasibility Studies (no separate workspace currently)	Sonya Tankersley (prime) Shane York (backup)	stankersley@ncdot.gov svsdyork@ncdot.gov
Geotechnical Engineering	Kevin Miller (backup) Michael Wang (prime)*	kbmiller@ncdot.gov mawang@ncdot.gov
Hydraulics	Michelle Berry (backup) Bill Elam (prime)*	mgberry@ncdot.gov bill.elam@aecom.com
ITS and Signals	Nick Zinser	rnzinser@ncdot.gov
Location and Surveys	Emory Kincaid (prime)* Donnie Stallings (backup)	ekincatid@ncdot.gov dstallings2@ncdot.gov
Plans and Standards Management	Joel Howerton Kyle Kempf	jhowerton@ncdot.gov kkempf@ncdot.gov
Photogrammetry	Gena Neal (prime for CADD side) Faith Driver (prime for stereo) Dennis Medley*	genaneal@ncdot.gov fsdriver@ncdot.gov
Roadside Environmental Unit	Jeffrey Walston (prime) Bob Kopetsky (backup) Jeremy Goodwin* (prime)	jdwalston@ncdot.gov jefflackey@ncdot.gov bkopetsky@ncdot.gov
Roadway Design	Jason Moore (backup) Oak Thammavong* (prime)	ajmoore@ncdot.gov sothammavong@ncdot.gov
Signing and Delineation	Walter Johnson * (prime) Ashley Matthews (backup)	walterjohnson@ncdot.gov akmatthews@ncdot.gov
Structures Management	James Hawk * (prime) Nick Pierce (backup)	jdhawk@ncdot.gov napierce@ncdot.gov
Utilities	Jon Loughry* (prime)	gjloughry@ncdot.gov
Work Zone Traffic Control	Justin Beaver* (prime)	jdbeaver1@ncdot.gov
Rail Division	Brad Smythe* (prime) Brian Gackstetter* (prime) Lena White (backup)	bsmythe@ncdot.gov begackstetter@ncdot.gov
Division of Aviation	Alicia Wright (prime) Glen Ayes	arwright3@ncdot.gov gayes@ncdot.gov
Central Construction Unit (no separate workspace)	Bryan Edwards	bledwards1@ncdot.gov



North Carolina Department of Transportation

– Virtual – **Research & Innovation Summit 2.0**

October 5-6, 2021

This will be an online learning experience.

Learn more at
www.hsrc.unc.edu/ncdot-ri-summit

Brought to you by
North Carolina
Department of Transportation



Hosted by
UNC Highway Safety
Research Center

Project Delivery Network Version 2.0 Available



The N.C. Department of Transportation's Project Delivery Network (PDN) is updated – **Version 2.0** of the PDN is now available. Replacing version 1.1, this version is a holistic update to every discipline within the document. The update includes:

- A new estimate process for construction, right-of-way and utilities
- Additional Stage 4 information about letting, award and contract execution
- Stage 5: Construction Phase
- Updates to the project management role
- ATLAS indicators on deliverables required to be uploaded to the work bench
- An interactive PDN activity diagram allowing users to customize discipline path(s) throughout the process

See the Full List of Updates > [2021-June-IPD-Articles.pdf \(ncdot.gov\)](#)



Meet Our Bentley Advisors

Elizabeth Lee— Our ProjectWise Guru



I joined Bentley in 2021 to fulfill the role as the full-time ProjectWise Resident Consultant for NCDOT. I am a long-time user of Intergraph and Bentley software, going back to Intergraph IGDS on VAX workstations (the precursor to MicroStation) in 1985. I spent most of my career at Dillard's Department Stores as their CADD Manager and ProjectWise Administrator. During my time at Dillard's, I learned the importance and benefits of engineering collaboration with ProjectWise to manage work across a large organization. I live in Little Rock, AR and outside of work I enjoy participating in a medieval reenactment group and volunteering at my local Humane Society.

Ethan Schwartz— Our OpenRoads Guru

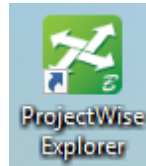


I live just North of Columbus, Ohio. My experience with Bentley goes back 22 years when I got out of school with my degree in Civil Engineering. The first Engineering firm I started with put me on the task of learning MicroStation and GEOPAK for the office. I cut my teeth programming input files and criteria runs for GEOPAK Road. In 2003 I took a position with a local Bentley reseller and training center where I learned to teach others the ins and outs of the software. From there I went on to help firms large and small in the mid-west on getting the most out of their Bentley products. I've worked on a wide variety of projects. From large highway design-build projects to small Right of Way takes and descriptions, and I've seen the design process move from 2D cross section based to 3D model based with ORD. In 2021 I joined the Bentley Civil Infrastructure Team as a full time Expert Advisor for North Carolina DOT to help get NCDOT up and running on ORD. Outside of work, I enjoy spending time with my family, watching movies and trying out local pizza shops."

Last Words

ProjectWise Login Guide

- Log into Connection Client, it will open in another box. Just input your NCDOT email address, click Password. No p



- • Click onto ProjectWise Explorer – Start, Bentley, ProjectWise Explorer

- is needed for access

click on + for the **NCDOT Production**
Make sure that the **NCDOT Production**
datasource and the **Bentley IMS** are select-
ed. Click **Log In**

Contact Us

NCDIT, - Transportation,
ETS ,EAS, CADD Services

Web Address

[https://connect.ncdot.gov/
resources/CADD/Pages/
default.aspx](https://connect.ncdot.gov/resources/CADD/Pages/default.aspx)

Mailing Address

Century Center Complex
Bldg. A 1597 Mail Service
Center Raleigh, NC 27699-
1597

Phone: 919.707.7030

Fax: 919.212.3072

IT West

/co: Bridge Maintenance
1296 Prison Camp Road
Newton, NC 28658

Phone: 828.468.6255

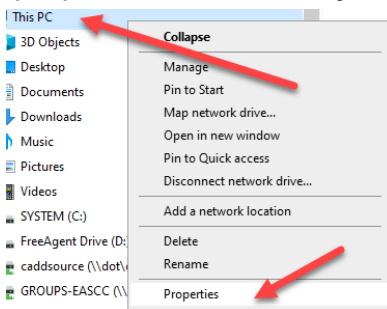
NCDOT Intranet address

[https://inside.ncdot.gov/
Business/technology/Pages/
Tech-CADDServices.aspx](https://inside.ncdot.gov/Business/technology/Pages/Tech-CADDServices.aspx)

*“Some problems are so
complex that you have to
be highly intelligent and
well informed just to be
undecided about them.”
-Laurence J*

And Finally what is your complete computer name?

In Windows 10 simply go to File Explorer =>This PC =>right click,
properties, and half way down is the full computer name.



Computer name, domain, and workgroup settings

Computer name: EAS-296620
Full computer name: EAS-296620.dot.nc.net
Computer description:
Domain: dot.nc.net

Note: all NCDOT computer names
should be in the following form.

Unit (up to 3 char) - FANumber (6 char.)
D14-#####L (add an L if it is a laptop)

For example

EAS-296620 for a workstation
EAS- 456732L for a laptop