

## Installing NCDOT Standard Workspaces

The easiest way to obtain current copies of the NCDOT workspace, including the various units' workspaces, is to use the UpdateWorkspace program, obtainable from the **Connect NCDOT** web site at the following URL:

(<https://connect.ncdot.gov/resources/CADD/Pages/default.aspx>).

Just download the UpdateWS.zip file. Its use will be explained later, but first, you must set up the system environment variables necessary for creating the workspace.

### Setting Variables

System environment variables can be created (in Windows 7) either through Control Panel (Windows 7 icon->Control Panel->System->Advanced system settings->Environment Variables) or by Right Clicking on My Computer, then Properties->Advanced system settings->Environment Variables.

To make MicroStation use the NCDOT workspace by default (the way computers are set up at NCDOT) create the following system environment variables:

```
NCDOT_V8_CONFIG_DIR=C:\NCDOT_V8_CONFIG  
NCDOT_V8_WORKSPACE_DIR=C:\NCDOT_V8_WORKSPACE  
MS_CONFIG=c:\ncdot_v8_config\ncdot_mslocal.cfg  
NCDOT_UNIT_WSNAME = "name" (i.e. NCDOT_UNIT_WSNAME = Roadway)  
LOAD_GEOPAK_SS2 = 1 (can be changed to SS3 if that is the version you are using)  
NCDOT_WIN7_64 = 1 (if running Windows7- 64 bit OS)
```

To set up a computer to use the update workspace program, but not use the NCDOT workspace, remove the following variable:

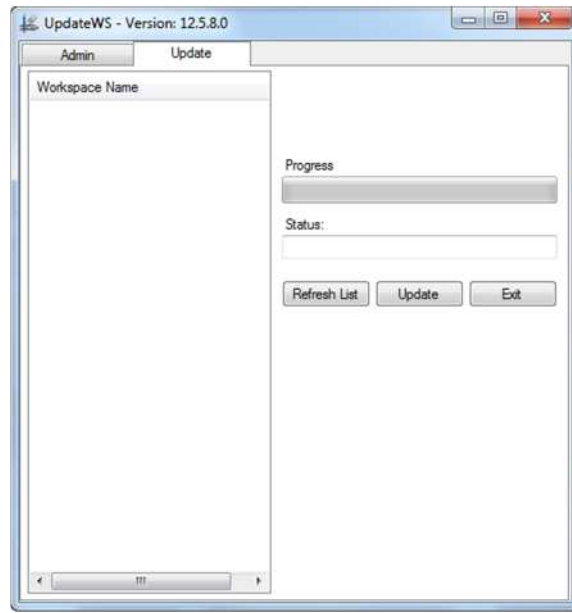
```
MS_CONFIG=c:\ncdot_v8_config\ncdot_mslocal.cfg
```

(For information on setting up the NCDOT workspace for part time use, see "Alternate NCDOT V8 Consultant Workspace Setup" in a .zip format" available from <https://connect.ncdot.gov/resources/CADD/Pages/default.aspx>)

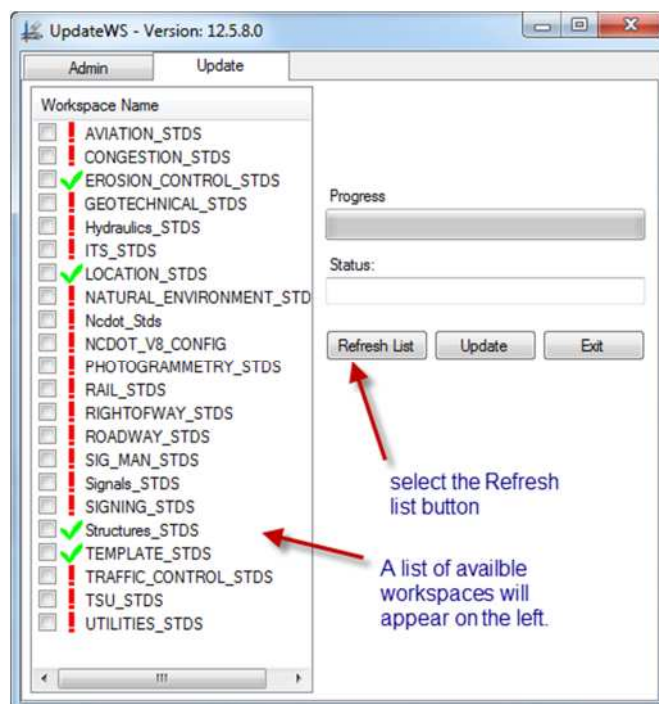
After setting the variables, use the Update Workspace program (UpdateWs.exe, available on the NCDOT web site) to obtain the most recent copies of NCDOT's workspaces.

## Using the UpdateWS program

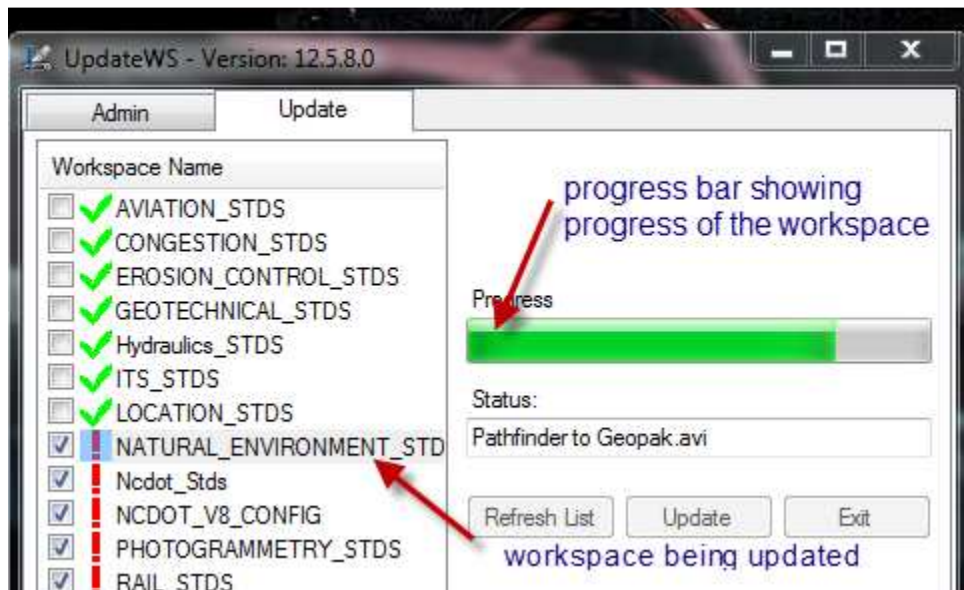
The UpdateWS program is provided as a zip file (UpdateWS.zip) on the NCDOT Connect Website. Extract UpdateWS.exe to your chosen directory. NCDOT places the executable in C:\Program Files (x86)\Update Workspace directory. Running the executable will present the following dialog box:



Then click on the Refresh List button to get a list of available workspaces to update or download.



Green checkmarks indicate the workspace on your hard drive is up to date. Red exclamation marks mean you need to update or download this workspace. Click in the boxes of the workspaces you want to update. Then click the Update button. When all your selected workspaces are up to date green check marks will appear in front of them. The first time you update/download the NCDOT Workspaces it can take some time (depends on network connection, traffic , etc.) be patient! Keep in mind one does not have to download all of the workspaces, only the ones you need. The exceptions are the **NCDOT\_STDS** and **NCDOT\_V8\_CONFIG**. These workspaces need to be on the machine and need to be kept up to date.



*NOTE: MicroStation must not be running while attempting to download a workspace ( a warning will be issued and downloading will not proceed).*

If you encounter any problems or issues while setting up the NCDOT workspaces contact CADD Services via the following link:

[https://apps.dot.state.nc.us/ContactUS/PostComment.aspx?Unit=CADD\\_Srvc](https://apps.dot.state.nc.us/ContactUS/PostComment.aspx?Unit=CADD_Srvc)

and someone will get back to you.