

ANNUAL REPORT FOR 2020



Sand Run and Warwick Swamp Temporary Impact Sites Chowan and Gates County

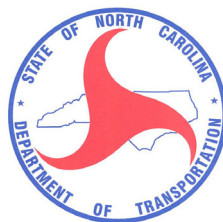
TIP No. B-5507

COE Action ID: SAW-2018-00325 (Br. 21 over Sand Run)

DWR Project #: 20180218 (Br. 21 over Sand Run)

COE Action ID: SAW-2018-00714 (Br. 24 over Warwick Swamp)

DWR Project #: 20180903 (Br. 24 over Warwick Swamp)



Prepared By:
Roadside Environmental Unit and Environmental Analysis Unit
North Carolina Department of Transportation
October 2020

TABLE OF CONTENTS

SUMMARY	1
1.0 Introduction	2
.1 Project Description	2
.2 Purpose	2
.3 Project History	2
.4 Debit Ledger	2
2.0 Vegetation:	3
.1 Success Criteria	3
.2 Description of Species	3
.3 Results of Vegetation Monitoring	3
.4 Conclusions.	3
3.0 Overall Conclusions and Recommendations	3

FIGURES

Figure 1 – Vicinity Map	4
-------------------------------	---

APPENDICES

Appendix A – Site Photos and Site Maps

SUMMARY

The Sand Run and Warwick Swamp Temporary Impact Sites are located in Chowan and Gates County. This is an annual report for temporary impacts associated with TIP No. B-5507 bridge replacements of Bridge No. 21 over Sand Run and Bridge No. 24 over Warwick Swamp on NC 32. The temporary impact sites were planted in March 2020.

The temporary impacts encompassed approximately 0.14 acre of temporary fill and 0.038 acre of hand clearing in wetlands at Sand Run and 0.12 acre of temporary fill and 0.11 acre of hand clearing in wetlands at Warwick Swamp for the purpose of constructing temporary onsite detours at Bridge Numbers 21 and 24 respectively. The area that was impacted is being monitored for 2 years to ensure that it re-attains wetland jurisdictional status.

After the first year of monitoring, the Sand Run and Warwick Swamp Temporary Impact Sites show by visual observation that the temporarily impacted areas are re-attaining wetland jurisdictional status. The planted tree seedlings were surviving at the time of monitoring.

NCDOT proposes to continue monitoring at the Sand Run and Warwick Swamp Temporary Impact Sites in 2021.

1.0 INTRODUCTION

1.1 Project Description

The Sand Run and Warwick Swamp Temporary Impact Sites are located in Chowan and Gates County at Bridge No. 21 over Sand Run and Bridge No. 24 over Warwick Swamp on NC 32 (Figure 1). The temporary impacts encompassed approximately 0.14 acre of temporary fill and 0.038 acre of hand clearing in wetlands at Sand Run and 0.12 acre of temporary fill and 0.11 acre of hand clearing in wetlands at Warwick Swamp. The area that was impacted is being monitored for 2 years to ensure that it re-attains wetland jurisdictional status.

1.2 Purpose

In order for a temporary impact site to be considered successful, a site must meet the success criteria. This report details the monitoring in 2020 at the Sand Run and Warwick Swamp Temporary Impact Sites.

1.3 Project History

March 2020	Wetland Reforestation Completed
October 2020	Vegetation Monitoring (Year 1)

1.4 Debit Ledger

The restoration of the Sand Run and Warwick Swamp temporary impact sites was used entirely to compensate for temporary impacts on the B-5507 project. There were no wetland mitigation credits generated from the restoration of the temporary impacted area.

2.0 VEGETATION: SAND RUN AND WARWICK SWAMP TEMPORARY IMPACT SITES (YEAR 1 MONITORING)

2.1 Success Criteria

Due to the possibility that compaction and/or other site alterations might prevent the temporary wetland impact area from re-attaining jurisdictional wetland status; the permittee shall provide an update on the wetland areas temporarily impacted at Sites 1 and 2. This update shall be conducted two growing seasons after completion of the work and shall consist of photographs and a brief report on the progress of the areas in re-attaining wetland jurisdictional status. Upon submission of this update to the NCDWR, the permittee shall schedule an agency field meeting with NCDWR to determine if the wetland areas temporarily impacted by this project have re-attained jurisdictional wetland status. If the wetland areas temporarily impacted by this project have not re-attained jurisdictional wetland status, the NCDWR shall determine if compensatory wetland mitigation is required.

2.2 Description of Species

The following wetland species were planted in the temporary impact area:

Taxodium distichum, Baldcypress

Platanus occidentalis, American Sycamore

Betula nigra, River Birch

Nyssa biflora, Swamp Tupelo

2.3 Results of Vegetation Monitoring

The impacted area where the temporary impacts occurred is re-attaining wetland jurisdictional status and the hardwood trees are surviving. Other species noted within the temporary impacted area included soft rush, goldenrod, fennel, jewelweed, sweetgum smartweed, cattail, pokeberry, woolgrass, black willow, *Scirpus* sp., and various grasses.

2.4 Conclusions

There were approximately 0.14 acre of temporary fill and 0.038 acre of hand clearing in wetlands at Sand Run and 0.12 acre of temporary fill and 0.11 acre of hand clearing in wetlands at Warwick Swamp. There were no plots established on the site. By visual observation, the Sand Run and Warwick Swamp Temporary Impact Sites show that the impacted areas are re-attaining wetland jurisdictional status and the planted species are surviving.

3.0 OVERALL CONCLUSIONS AND RECOMMENDATIONS

NCDOT proposes to continue monitoring at the Sand Run and Warwick Swamp Temporary Impact Sites

B-5507 NC 32
Bridges 21 & 24
Chowan County Quad Name Mintonsville

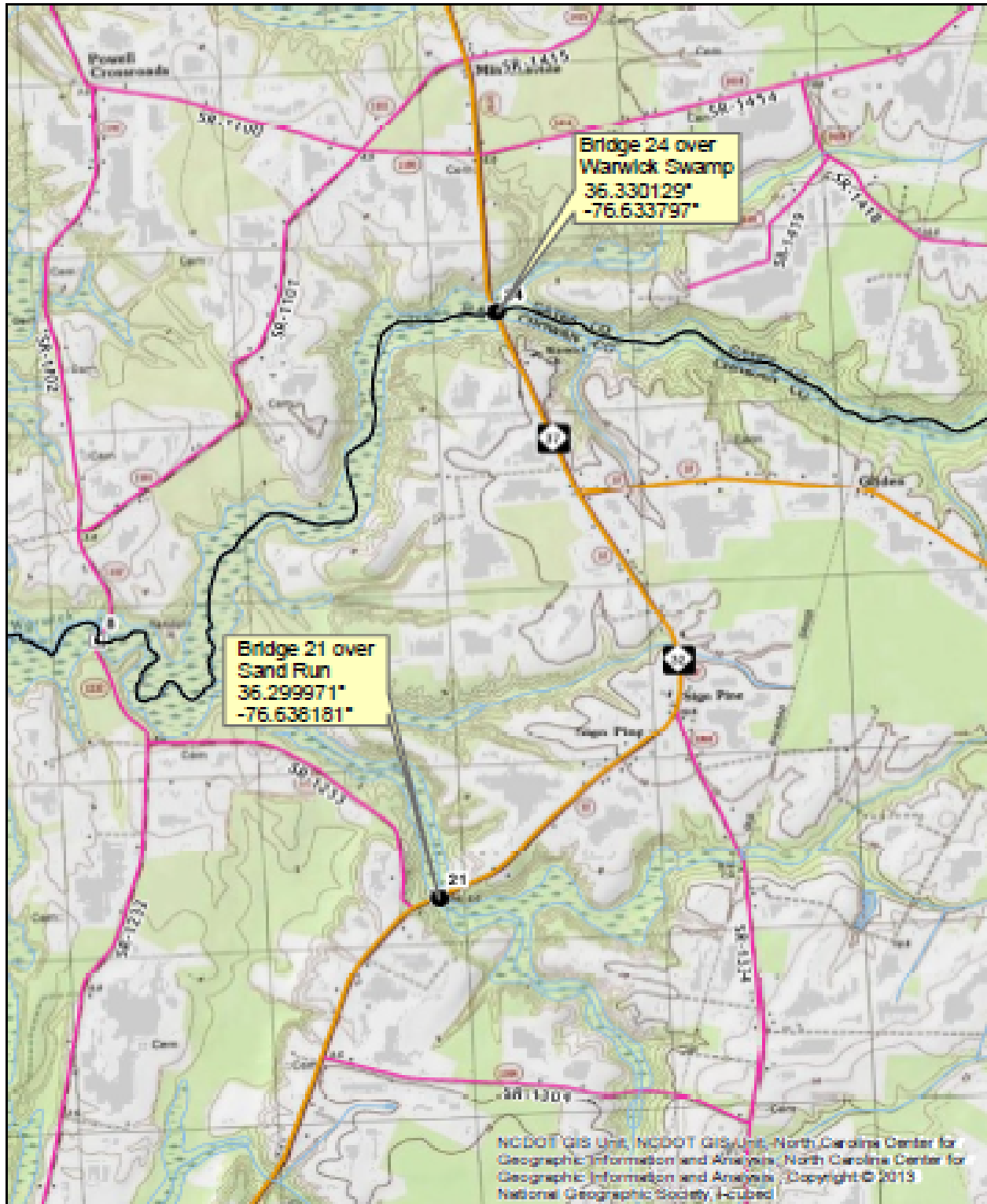


Figure 1. Vicinity Map

APPENDIX A

SITE PHOTOS & SITE MAPS

Sand Run Temporary Impact Site



Photo 1



Photo 2

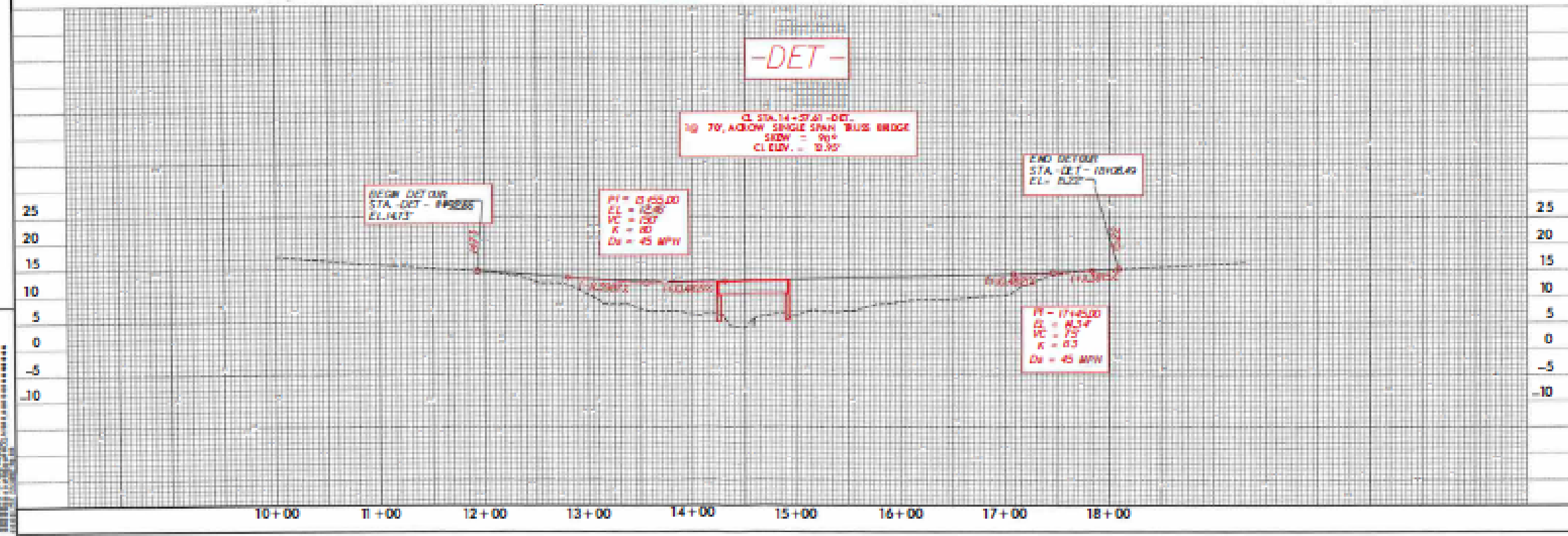
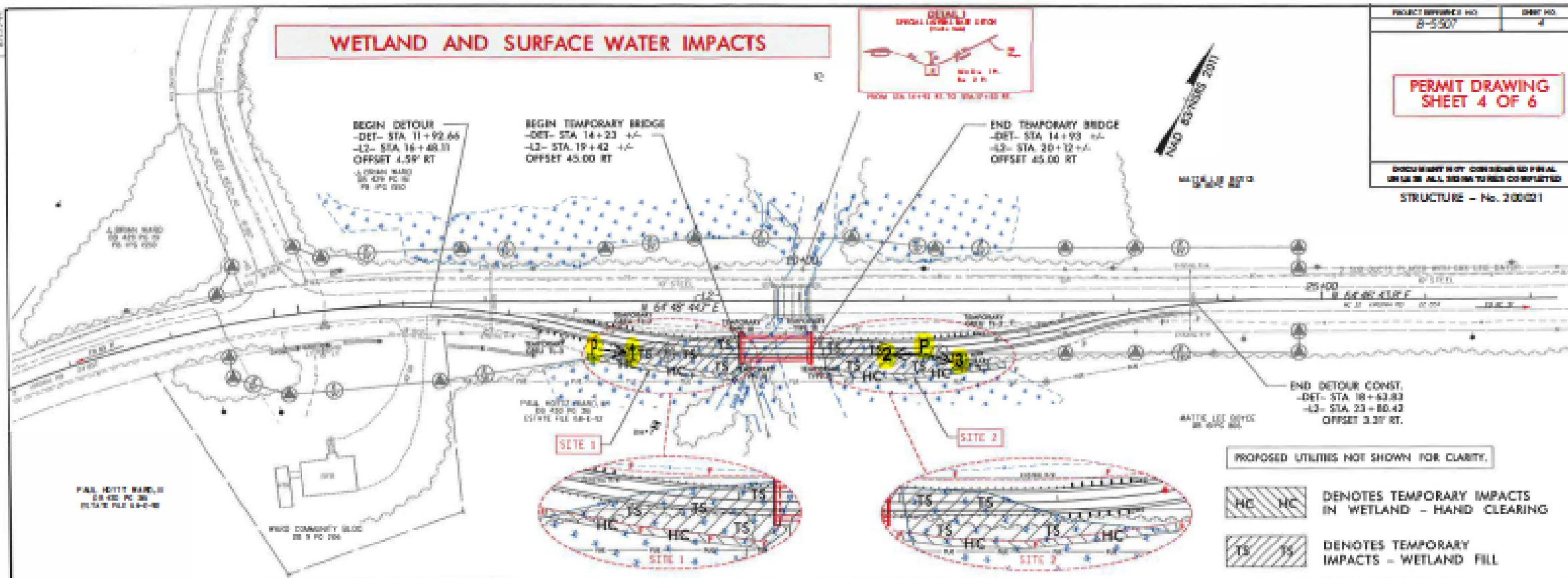


Photo 3

October 2020

WETLAND AND SURFACE WATER IMPACTS

PROJECT NUMBER NO. B-3507	SHEET NO. 4
PERMIT DRAWING SHEET 4 OF 6	
CHECKED BY: [] CONSIDERED FINAL UNLESS ALL NOTES TO THIS DRAWING ARE COMPLETED	
STRUCTURE - No. 200021	



Warwick Swamp Temporary Impact Site



Photo 1



Photo 2



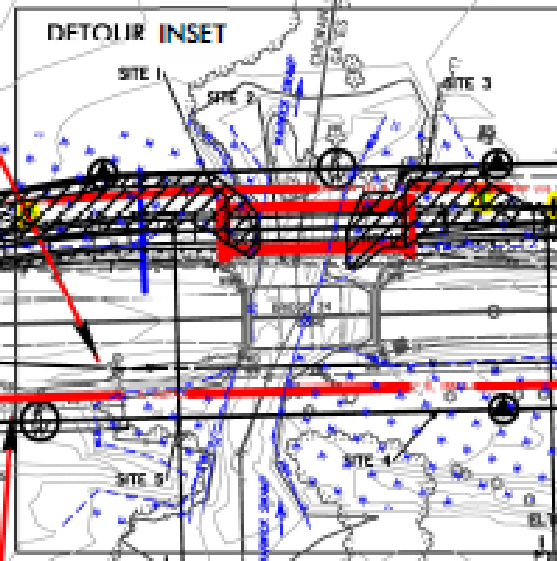
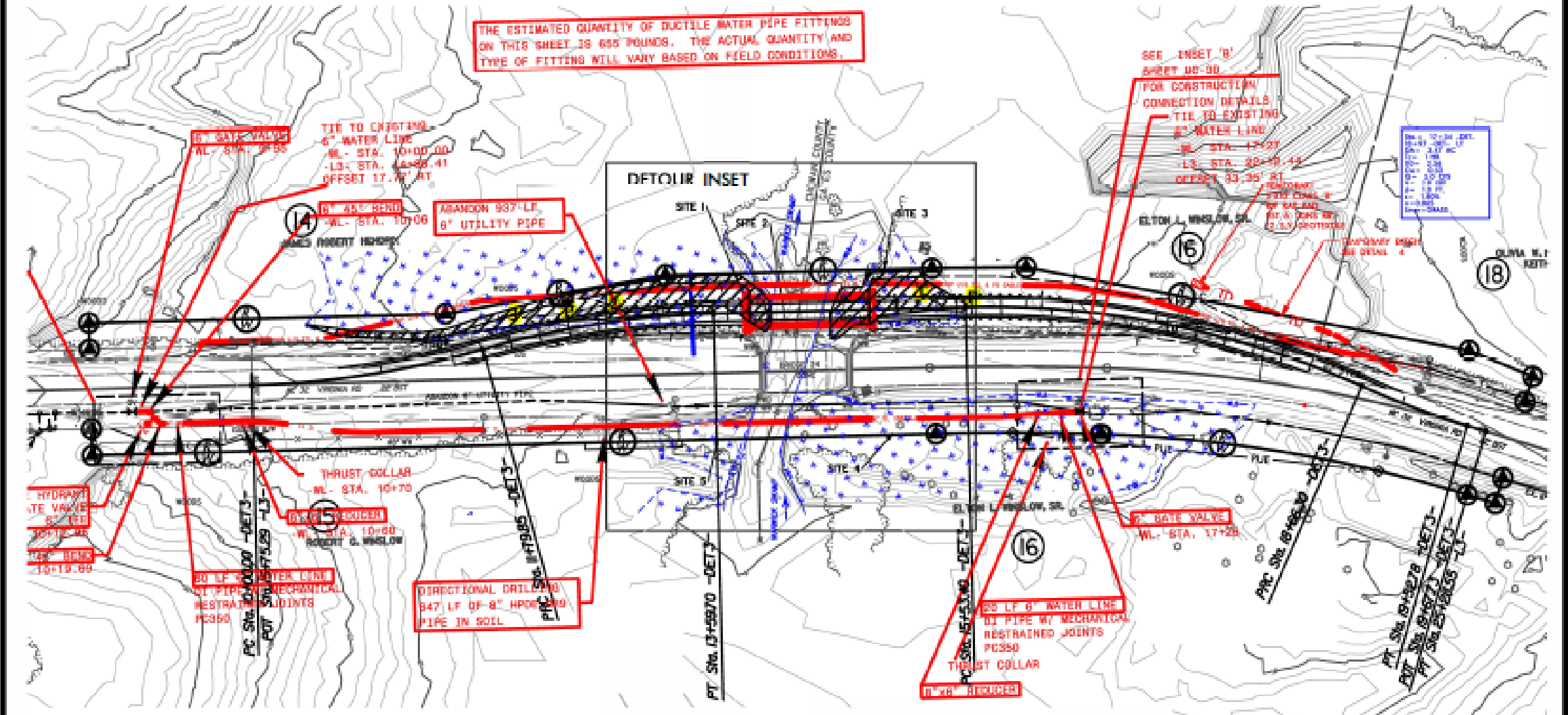
Photo 3

October 2020

PROJECT NUMBER	0-3007-04
SHEET NO.	7
DATE	
DESIGNED BY	
CHECKED BY	
THIS DRAWING IS NOT TO BE CONSIDERED FINAL UNLESS SO INDICATED BY THE ENGINEER	



THE ESTIMATED QUANTITY OF DUCTILE WATER PIPE FITTINGS ON THIS SHEET IS 650 POUNDS. THE ACTUAL QUANTITY AND TYPE OF FITTINGS WILL VARY BASED ON FIELD CONDITIONS.



SEE INSET 'B' SHEET 08-00 FOR CONSTRUCTION CONNECTION DETAILS TIE TO EXISTING 6" WATER LINE
 WL STA. 17+37
 LS STA. 22+19.43
 OFFSET 33.30' AT
 ELTON L. WISLOW, SR.
 12/13/2004
 12/13/2004

SEE INSET 'C' SHEET 08-00 FOR CONSTRUCTION CONNECTION DETAILS TIE TO EXISTING 6" WATER LINE
 WL STA. 17+37
 LS STA. 22+19.43
 OFFSET 33.30' AT
 ELTON L. WISLOW, SR.
 12/13/2004
 12/13/2004

HYDRANT VALVE
 STEEL
 10012-16
 10-19-89

30 LF 6" WATER LINE
 DI PIPE WY MECHANICAL RESTRAINED JOINTS
 PC350
 PC STA. 0+00 - DET-3
 POT STA. 0+29 - L3-

THRUST COLLAR
 WL STA. 10+70
 W. STA. 10+00
 ROBERT G. WISLOW

DIRECTIONAL DRILLING
 847 LF OF 8" HDPE PIPE IN SOIL
 PC STA. 0+00 - DET-3
 POT STA. 0+29 - L3-

25 LF 6" WATER LINE
 DI PIPE WY MECHANICAL RESTRAINED JOINTS
 PC350
 THRUST COLLAR
 12" HDPE REDUCERS

6" RATE VALVE
 WL STA. 17+38

- DENOTES OCCASION IN WETLAND
- DENOTES TEMPORARY IMPACTS IN SURFACE WATERS
- DENOTES ALL IN WETLAND
- DENOTES HAND CLEARING
- DENOTES TEMPORARY FILL IN WETLAND
- DENOTES IMPACT IN SURFACE WATERS

