

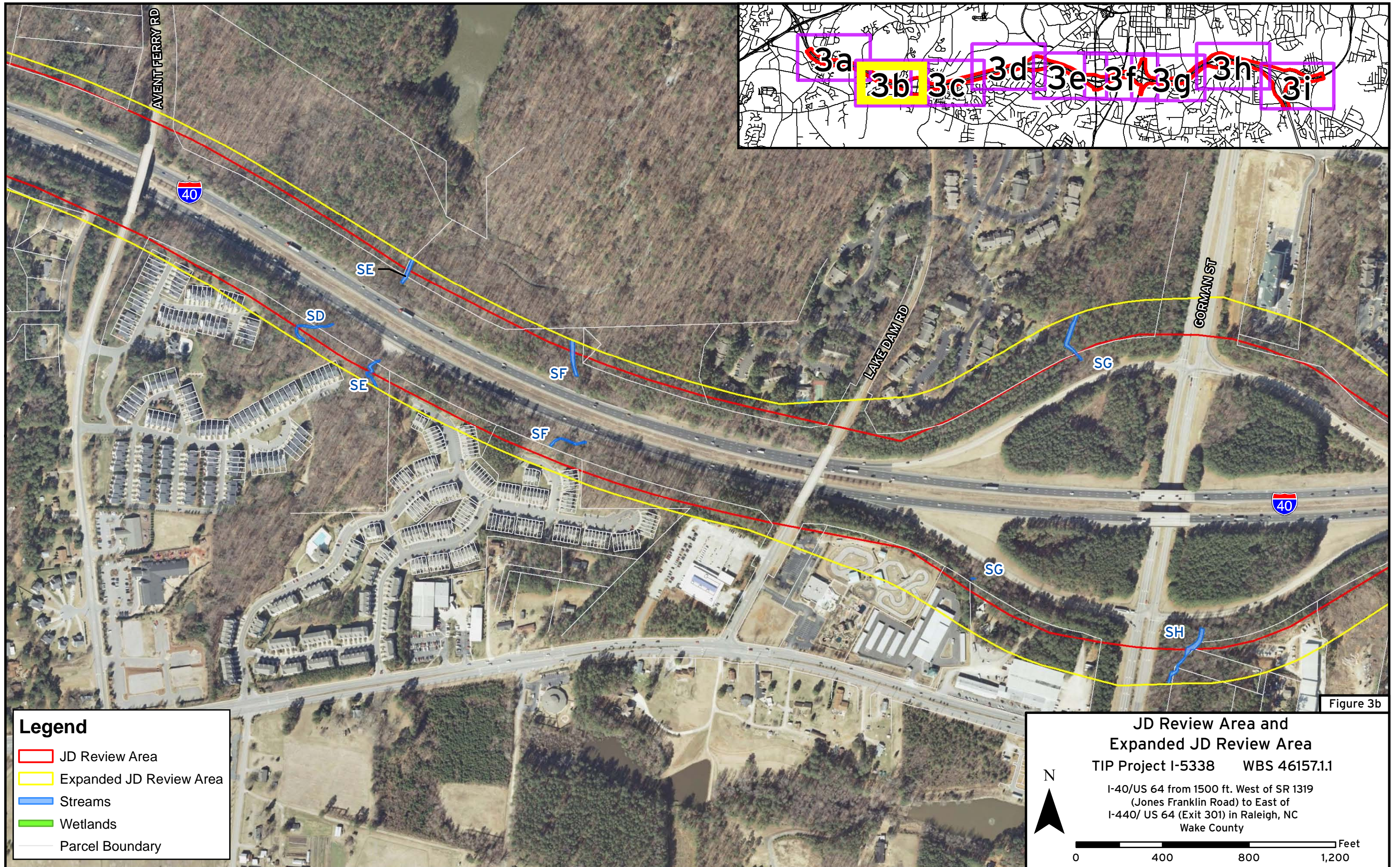
Legend

- ▭ JD Review Area
- ▭ Expanded JD Review Area
- ▬ Streams
- ▬ Wetlands
- ▬ Parcel Boundary

**JD Review Area and
Expanded JD Review Area**
 TIP Project I-5338 WBS 46157.1
 I-40/US 64 from 1500 ft. West of SR 1319
 (Jones Franklin Road) to East of
 I-440/ US 64 (Exit 301) in Raleigh, NC
 Wake County

N
 0 400 800 1,200 Feet

Figure 3a



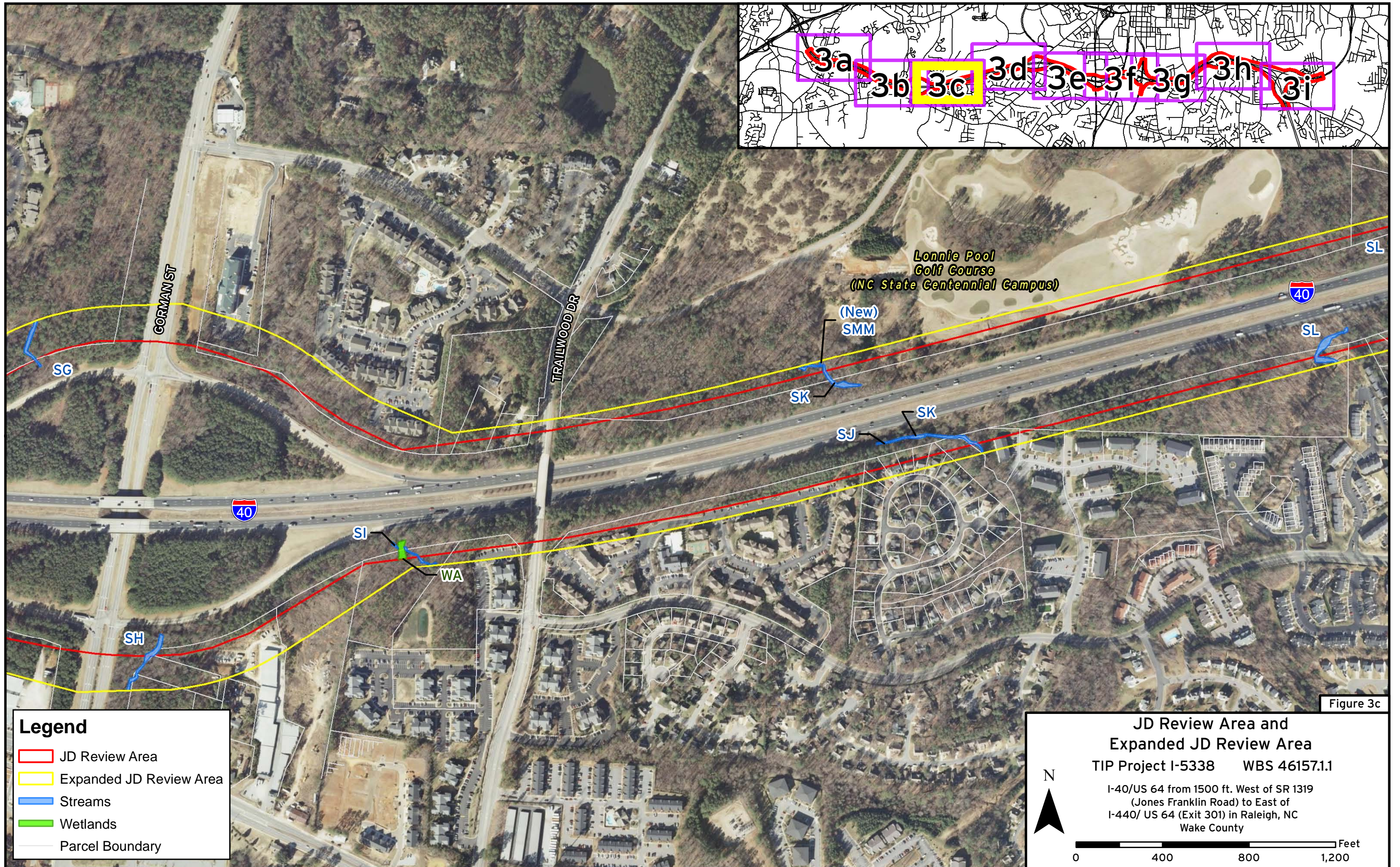
Legend

- ▭ JD Review Area
- ▭ Expanded JD Review Area
- ▬ Streams
- ▬ Wetlands
- ▬ Parcel Boundary

**JD Review Area and
Expanded JD Review Area**
 TIP Project I-5338 WBS 46157.1.1
 I-40/US 64 from 1500 ft. West of SR 1319
 (Jones Franklin Road) to East of
 I-440/ US 64 (Exit 301) in Raleigh, NC
 Wake County

N
 0 400 800 1,200 Feet

Figure 3b



Legend

- JD Review Area
- Expanded JD Review Area
- Streams
- Wetlands
- Parcel Boundary

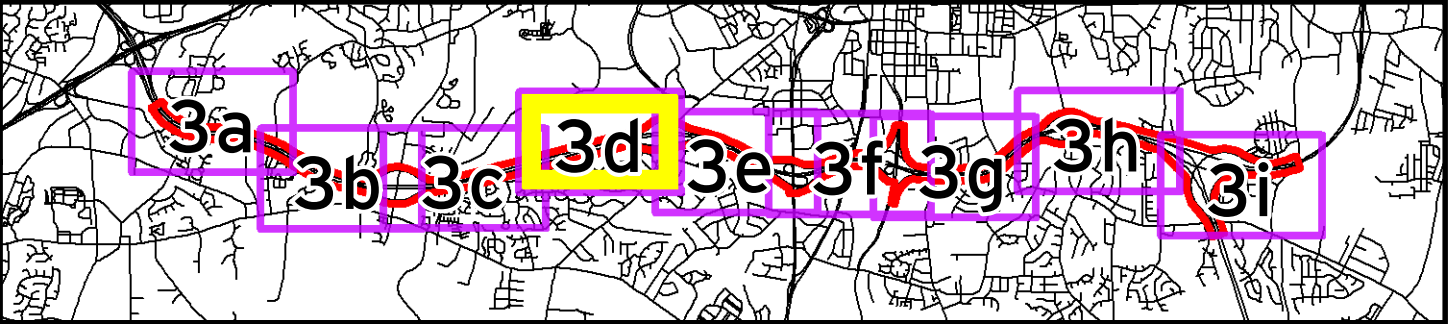
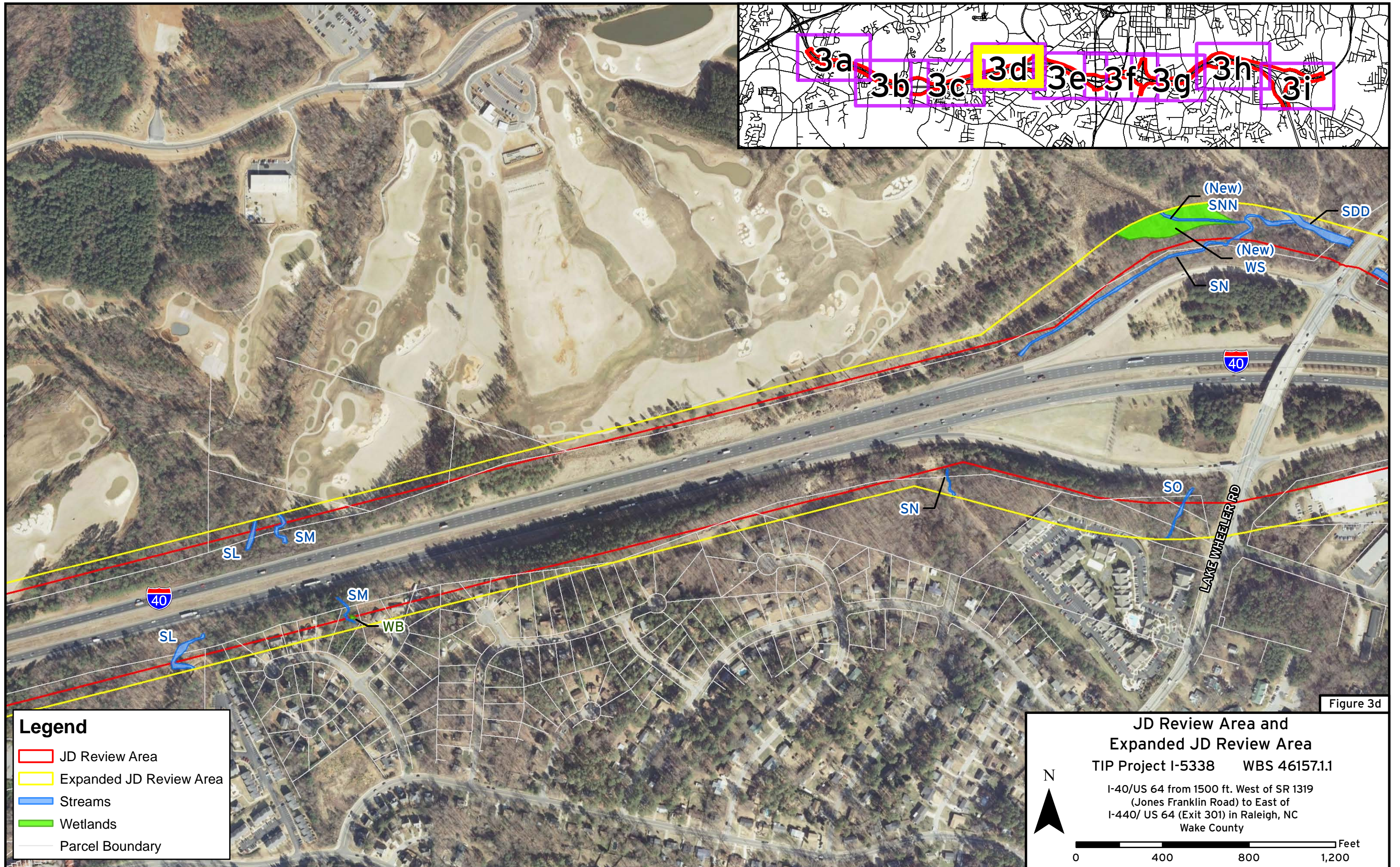
Figure 3c

**JD Review Area and
Expanded JD Review Area**
TIP Project I-5338 WBS 46157.1.1

I-40/US 64 from 1500 ft. West of SR 1319
(Jones Franklin Road) to East of
I-440/ US 64 (Exit 301) in Raleigh, NC
Wake County

N

Feet



Legend

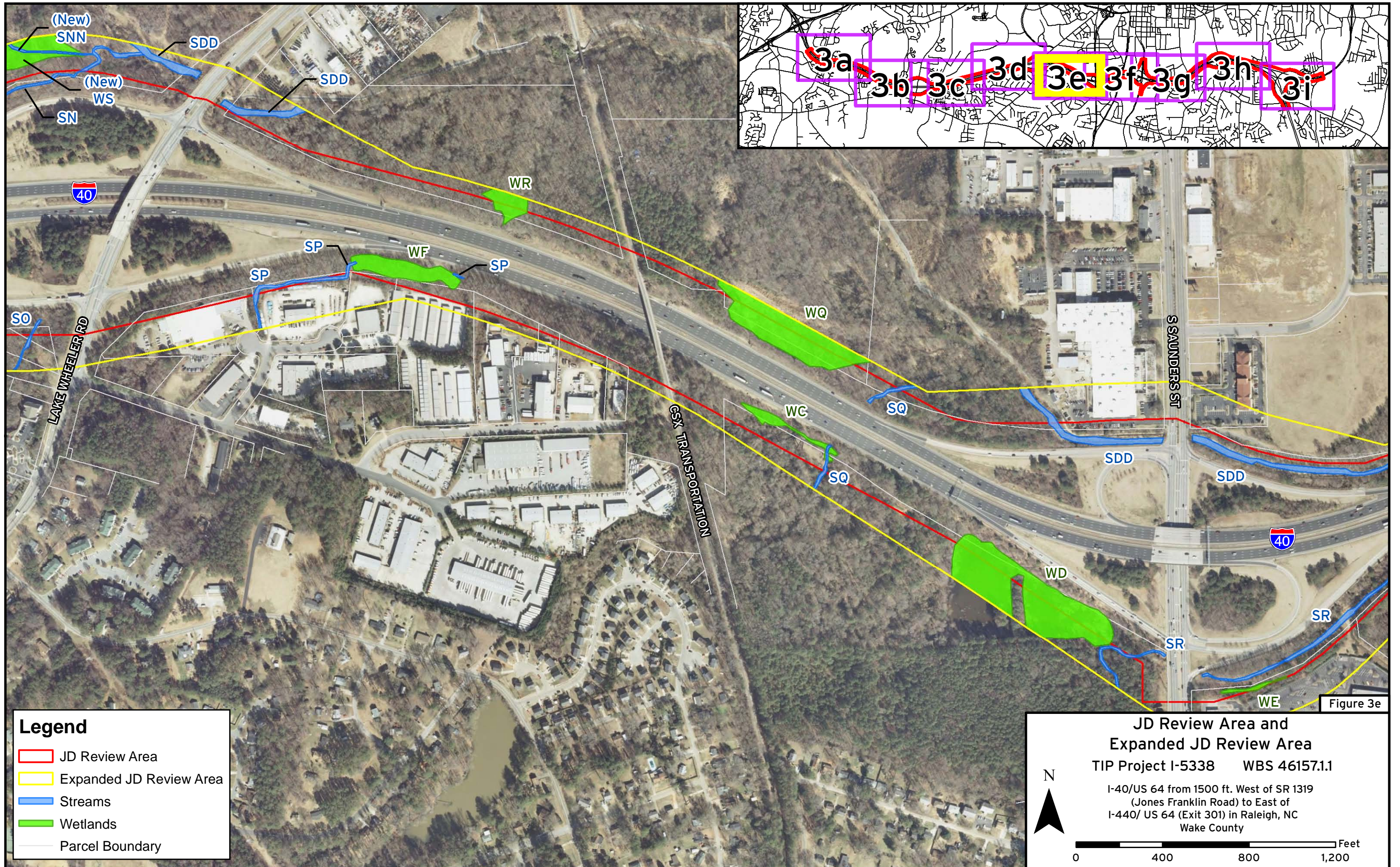
- ▭ JD Review Area
- ▭ Expanded JD Review Area
- ▬ Streams
- ▭ Wetlands
- ▬ Parcel Boundary

Figure 3d

**JD Review Area and
Expanded JD Review Area**
 TIP Project I-5338 WBS 46157.1.1
 I-40/US 64 from 1500 ft. West of SR 1319
 (Jones Franklin Road) to East of
 I-440/ US 64 (Exit 301) in Raleigh, NC
 Wake County

N

0 400 800 1,200 Feet



Legend

- JD Review Area
- Expanded JD Review Area
- Streams
- Wetlands
- Parcel Boundary

**JD Review Area and
Expanded JD Review Area**

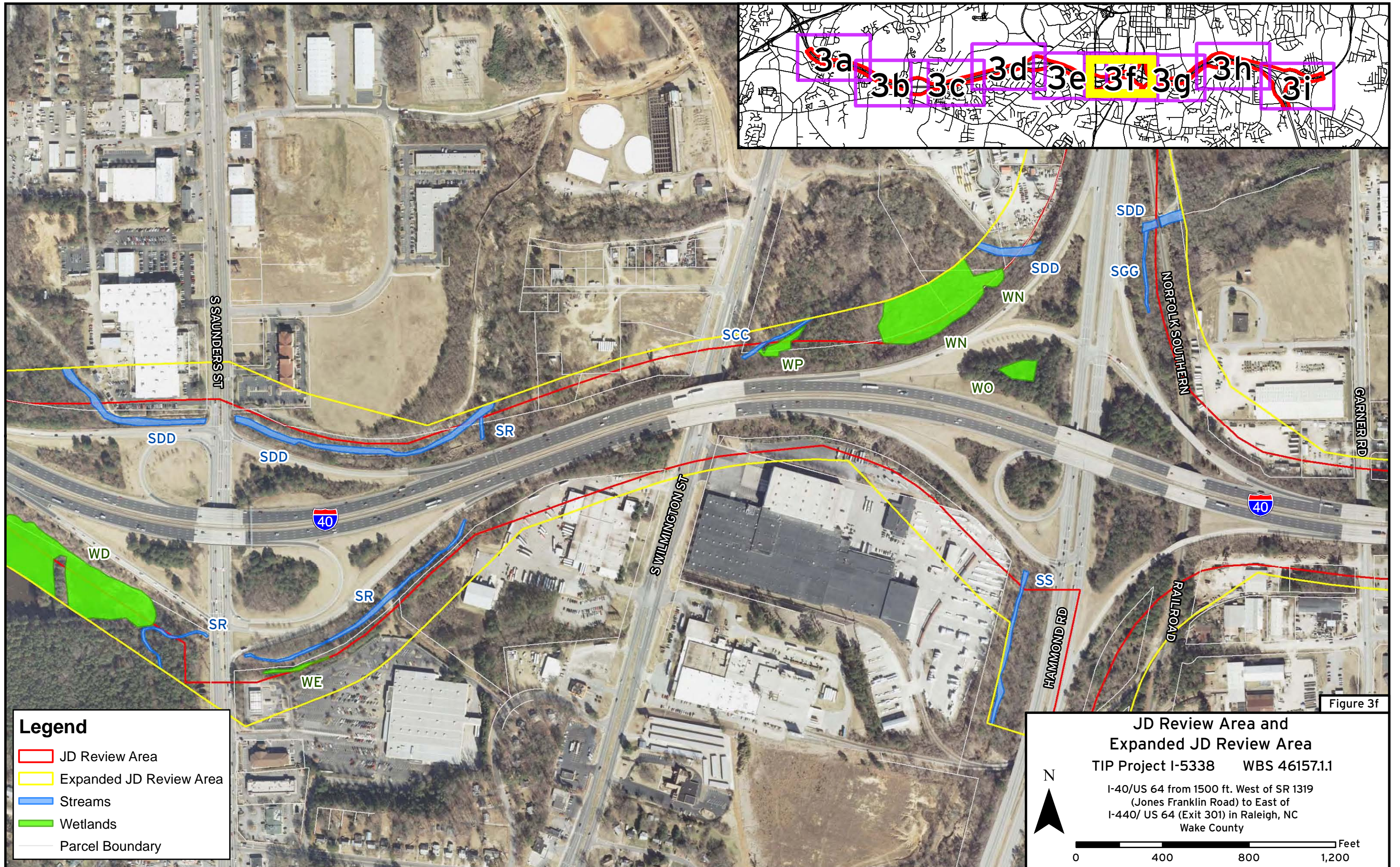
TIP Project I-5338 WBS 46157.1.1

I-40/US 64 from 1500 ft. West of SR 1319
(Jones Franklin Road) to East of
I-440/ US 64 (Exit 301) in Raleigh, NC
Wake County

N

0 400 800 1,200 Feet

Figure 3e



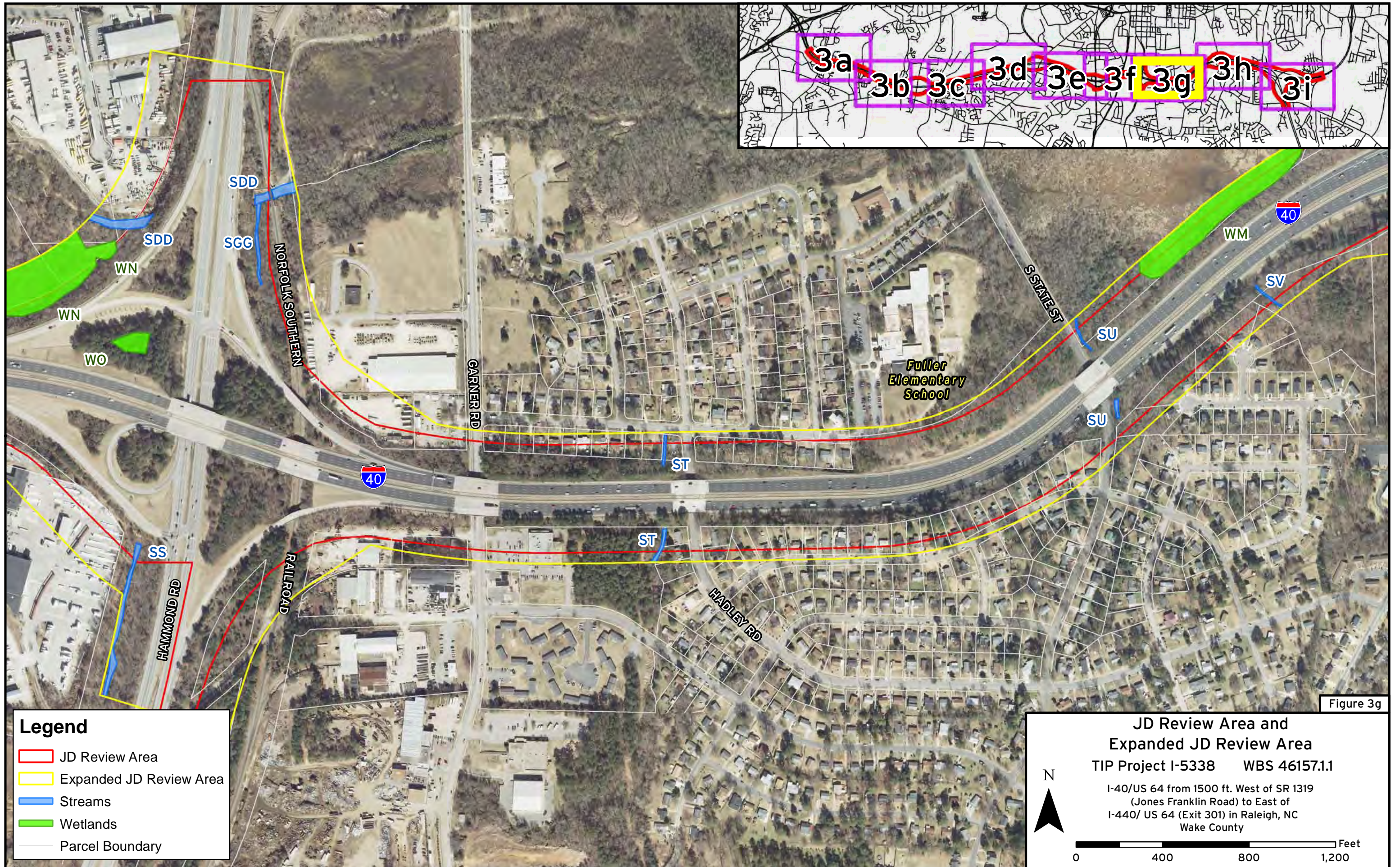
- Legend**
- ▭ JD Review Area
 - ▭ Expanded JD Review Area
 - ▬ Streams
 - ▭ Wetlands
 - Parcel Boundary

**JD Review Area and
Expanded JD Review Area**
 TIP Project I-5338 WBS 46157.1.1
 I-40/US 64 from 1500 ft. West of SR 1319
 (Jones Franklin Road) to East of
 I-440/ US 64 (Exit 301) in Raleigh, NC
 Wake County

N

 0 400 800 1,200 Feet

Figure 3f



Legend

- ▭ JD Review Area
- ▭ Expanded JD Review Area
- ▬ Streams
- ▭ Wetlands
- ▬ Parcel Boundary

Figure 3g

**JD Review Area and
Expanded JD Review Area**
 TIP Project I-5338 WBS 46157.1.1

I-40/US 64 from 1500 ft. West of SR 1319
 (Jones Franklin Road) to East of
 I-440/ US 64 (Exit 301) in Raleigh, NC
 Wake County

N

0 400 800 1,200 Feet



Legend

- ▭ JD Review Area
- ▭ Expanded JD Review Area
- ▬ Streams
- ▭ Wetlands
- ▬ Parcel Boundary

**JD Review Area and
Expanded JD Review Area**
 TIP Project I-5338 WBS 46157.1.1
 I-40/US 64 from 1500 ft. West of SR 1319
 (Jones Franklin Road) to East of
 I-440/ US 64 (Exit 301) in Raleigh, NC
 Wake County

N

 0 400 800 1,200 Feet

Figure 3h



Legend

- ▭ JD Review Area
- ▭ Expanded JD Review Area
- ▬ Streams
- ▭ Wetlands
- ▬ Parcel Boundary

Figure 3i

**JD Review Area and
Expanded JD Review Area**
 TIP Project I-5338 WBS 46157.1.1

I-40/US 64 from 1500 ft. West of SR 1319
 (Jones Franklin Road) to East of
 I-440/ US 64 (Exit 301) in Raleigh, NC
 Wake County

N