



BY: M. CARLISLE



NORTH CAROLINA DEPARTMENT
OF TRANSPORTATION
DIVISION OF HIGHWAYS
PROJECT DEVELOPMENT AND
ENVIRONMENTAL ANALYSIS BRANCH

JURISDICTIONAL FEATURES AND
PROPERTY OWNER BOUNDARIES

US 501
PERSON COUNTY
PERSON COUNTY
TIP PROJECT R-2241A



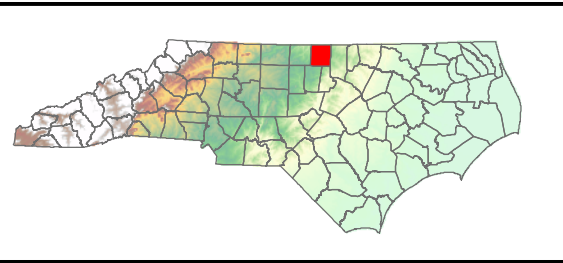
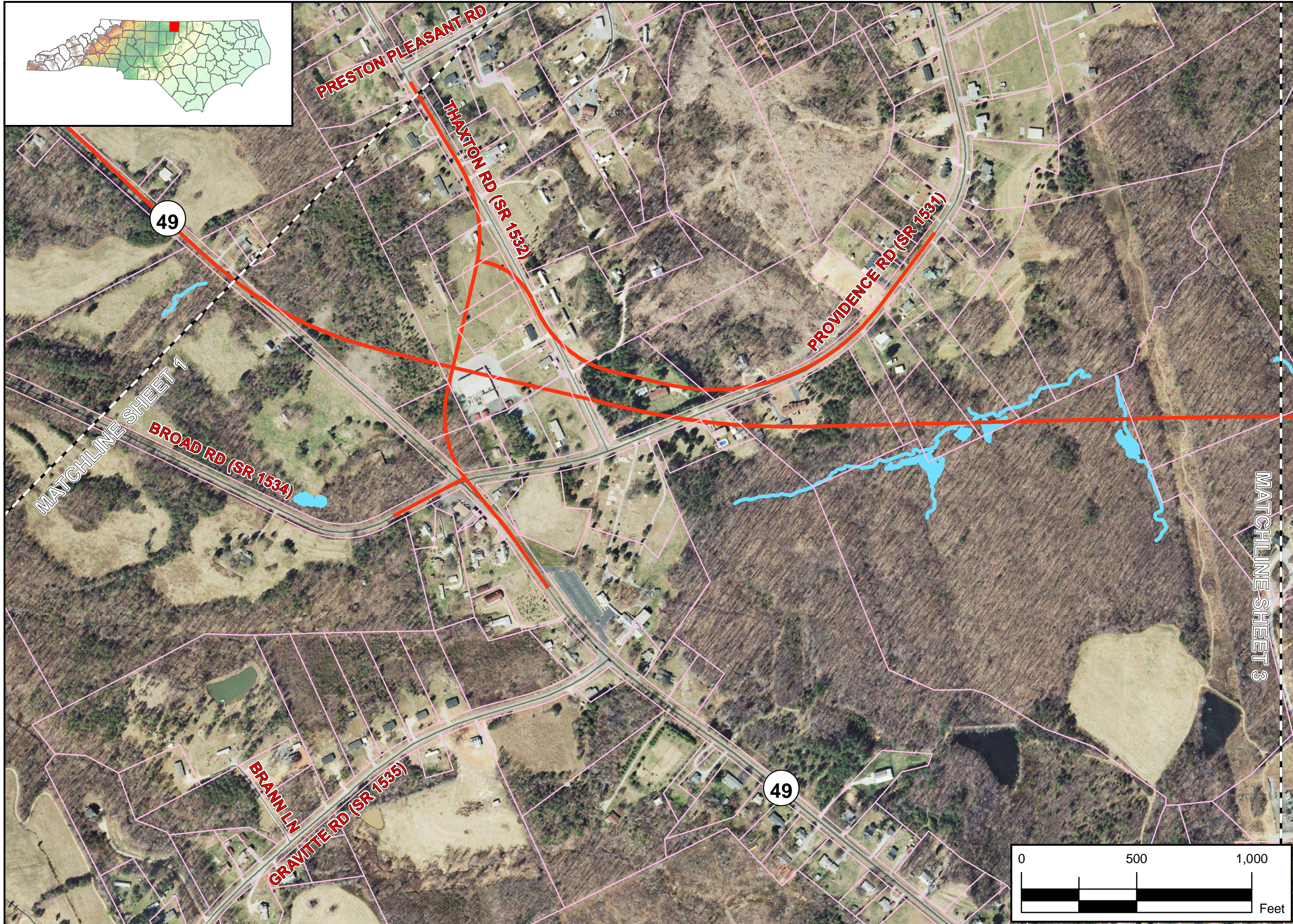
County:
PERSON

Div: 5 TIP#
R-2241A

WBS:
34406.1.1

Date:
SEPTEMBER 2010

Figure
2
Sheet 1 of 5



NORTH CAROLINA DEPARTMENT
OF TRANSPORTATION
DIVISION OF HIGHWAYS
PROJECT DEVELOPMENT AND
ENVIRONMENTAL ANALYSIS BRANCH

**JURISDICTIONAL FEATURES AND
PROPERTY OWNER BOUNDARIES**

US 501
PERSON COUNTY
PERSON COUNTY
TIP PROJECT R-2241A

County:
PERSON

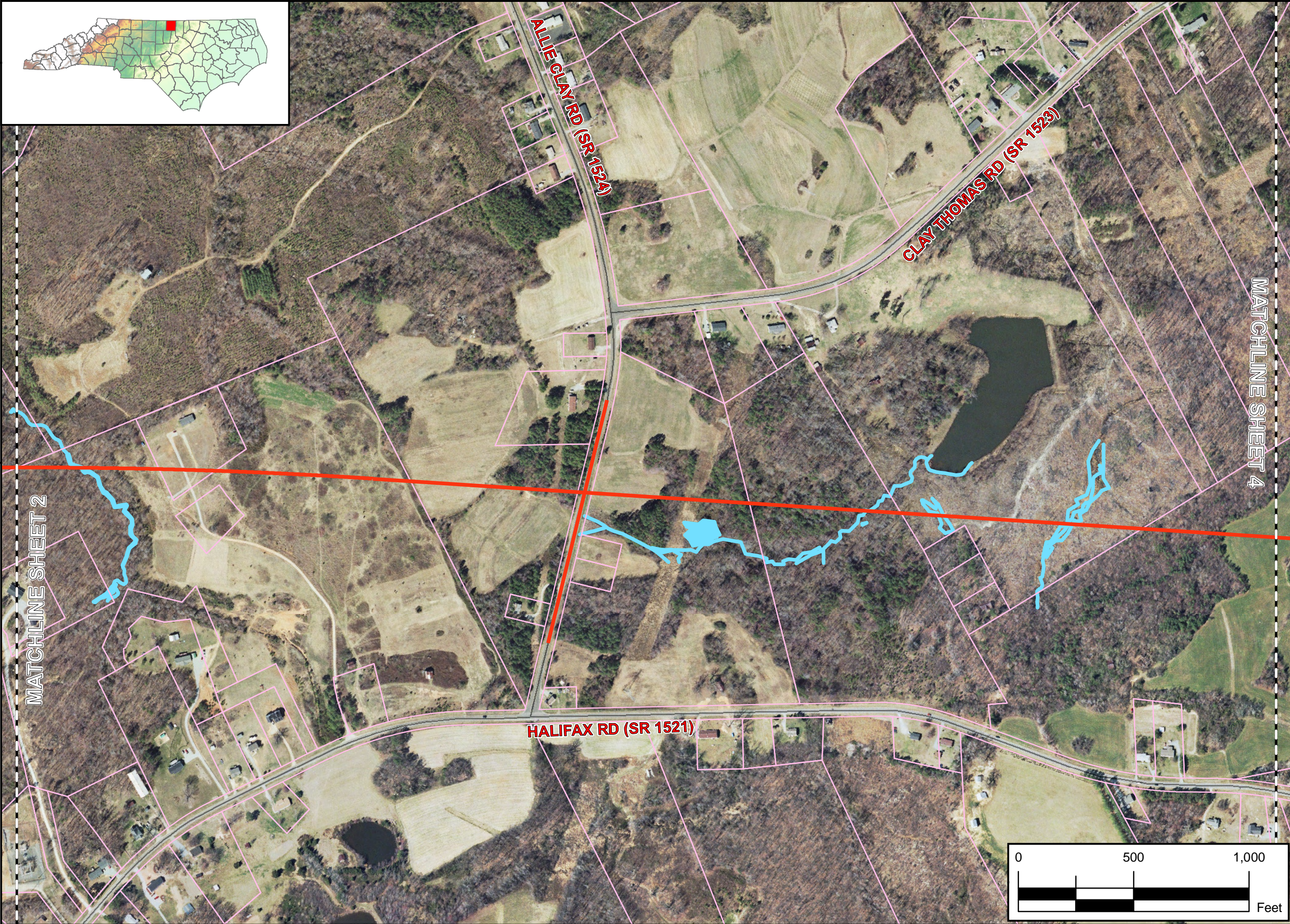
Div: 5 TIP#
R-2241A

WBS:
34406.1.1

Date:
SEPTEMBER 2010

Figure
2
Sheet 2 of 5

BY: M. CARLISLE



BY: M. CARLISLE

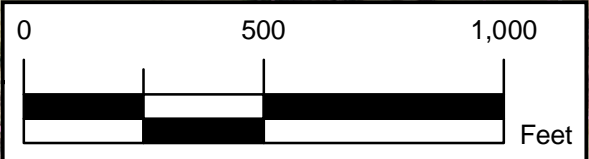
MATCHLINE SHEET 2

MATCHLINE SHEET 4

HALIFAX RD (SR 1521)

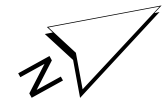
ALLIE CLAY RD (SR 1324)

CLAY THOMAS RD (SR 1523)



NORTH CAROLINA DEPARTMENT
OF TRANSPORTATION
DIVISION OF HIGHWAYS
PROJECT DEVELOPMENT AND
ENVIRONMENTAL ANALYSIS BRANCH

JURISDICTIONAL FEATURES AND
PROPERTY OWNER BOUNDARIES
US 501
PERSON COUNTY
PERSON COUNTY
TIP PROJECT R-2241A



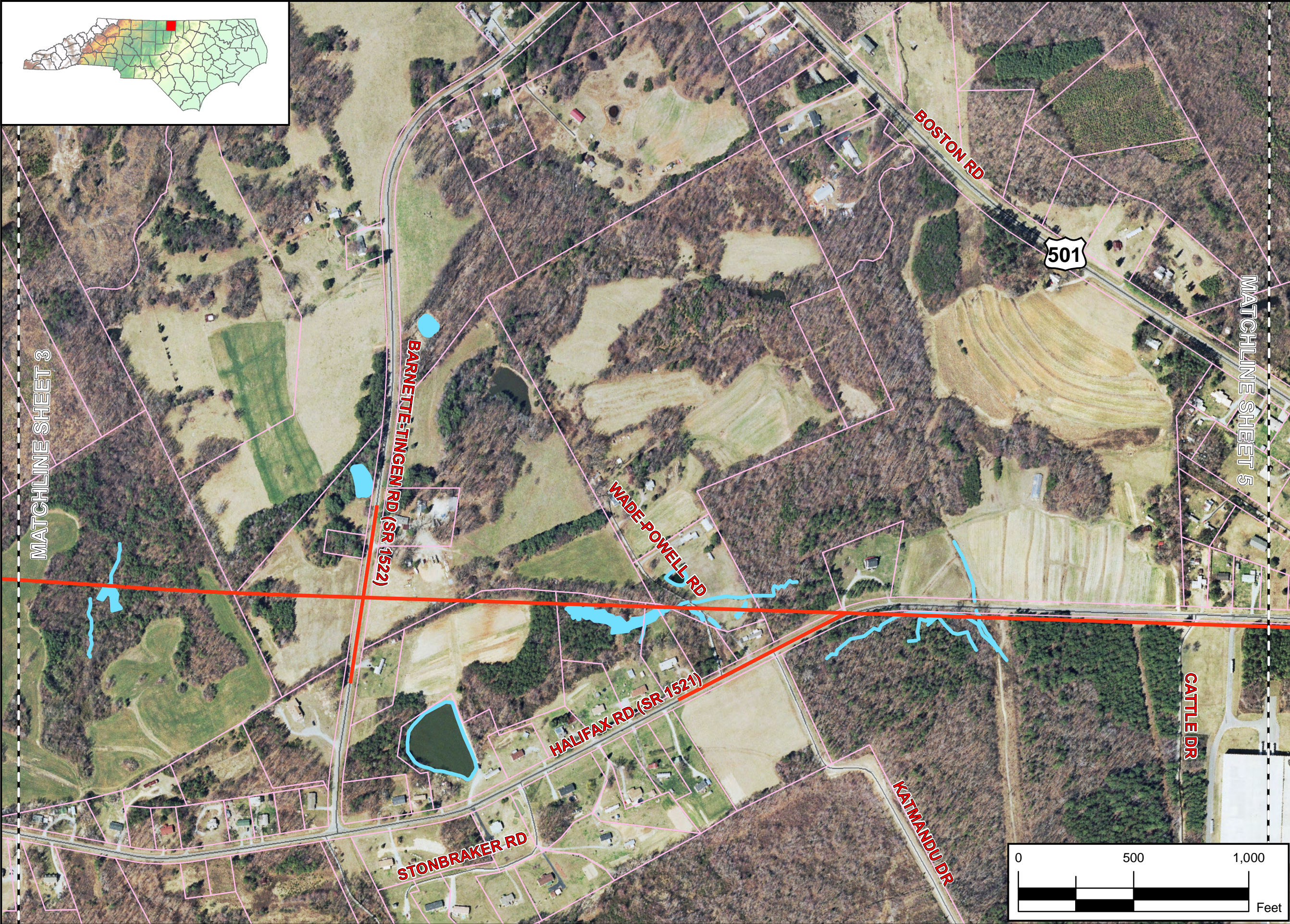
County:
PERSON

Div: 5 TIP# R-2241A

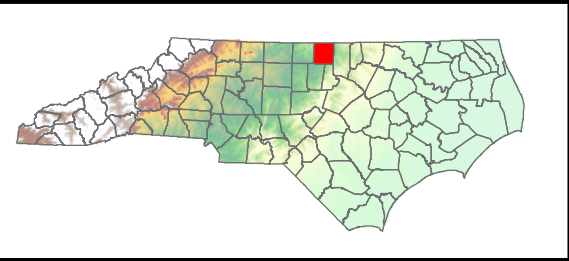
WBS:
34406.1.1

Date:
SEPTEMBER 2010

Figure
2
Sheet 3 of 5

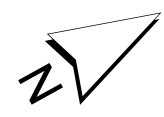


BY: M. CARLISLE



NORTH CAROLINA DEPARTMENT
OF TRANSPORTATION
DIVISION OF HIGHWAYS
PROJECT DEVELOPMENT AND
ENVIRONMENTAL ANALYSIS BRANCH

JURISDICTIONAL FEATURES AND
PROPERTY OWNER BOUNDARIES
US 501
PERSON COUNTY
PERSON COUNTY
TIP PROJECT R-2241A



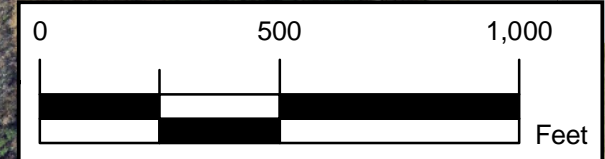
County:
PERSON

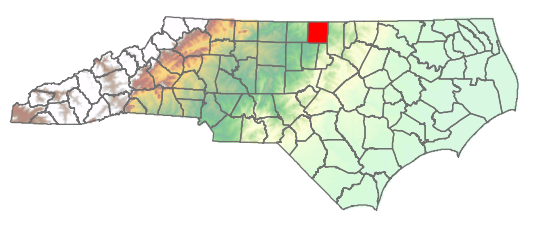
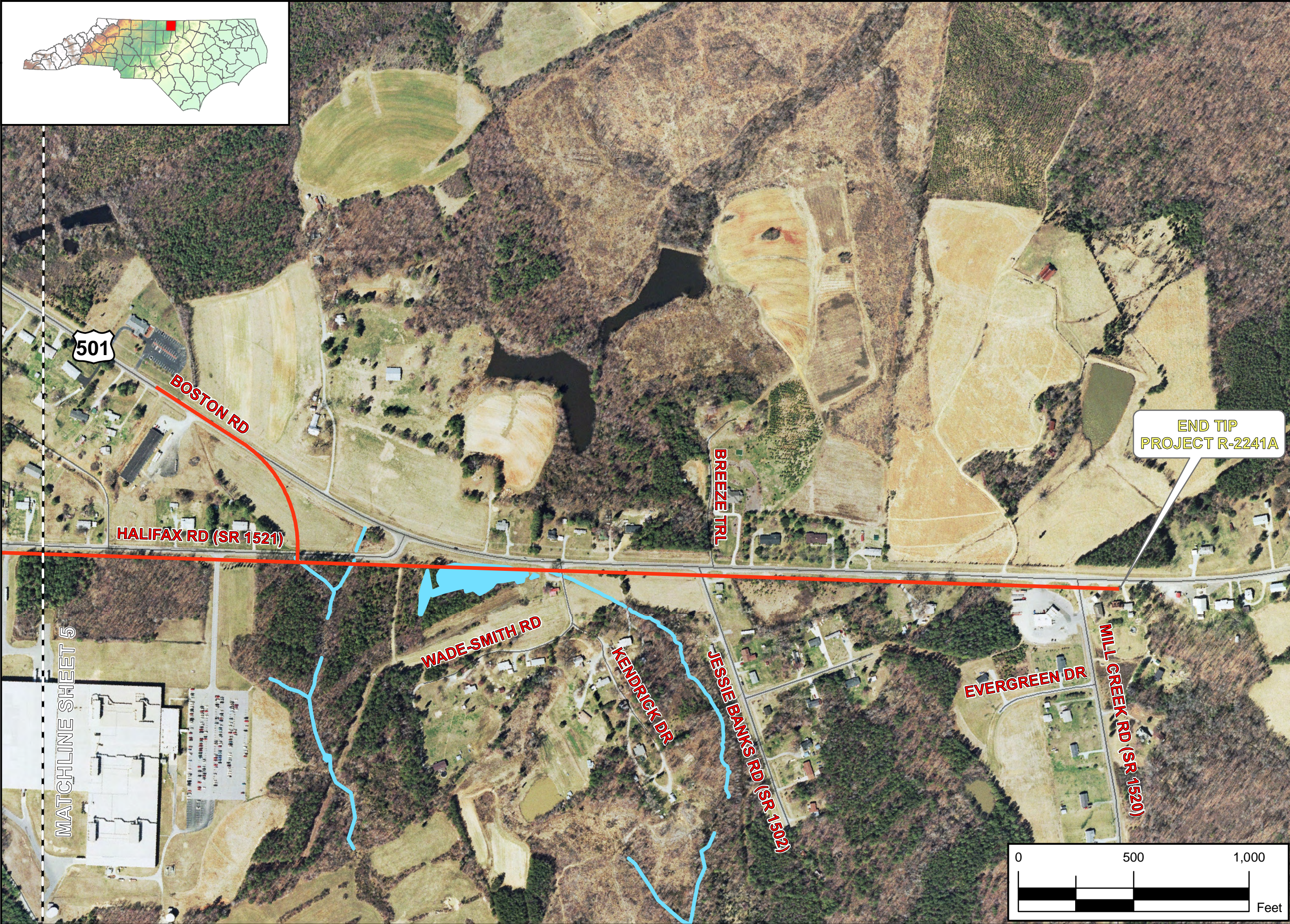
Div: 5 TIP#
R-2241A

WBS:
34406.1.1

Date:
SEPTEMBER 2010

Figure
2
Sheet 4 of 5



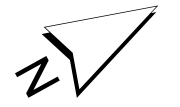


BY: M. CARLISLE



NORTH CAROLINA DEPARTMENT
OF TRANSPORTATION
DIVISION OF HIGHWAYS
PROJECT DEVELOPMENT AND
ENVIRONMENTAL ANALYSIS BRANCH

JURISDICTIONAL FEATURES AND
PROPERTY OWNER BOUNDARIES
US 501
PERSON COUNTY
PERSON COUNTY
TIP PROJECT R-2241A



County:
PERSON

Div: 5 TIP# R-2241A

WBS:
34406.1.1

Date:
SEPTEMBER 2010

Figure
2
Sheet 5 of 5