

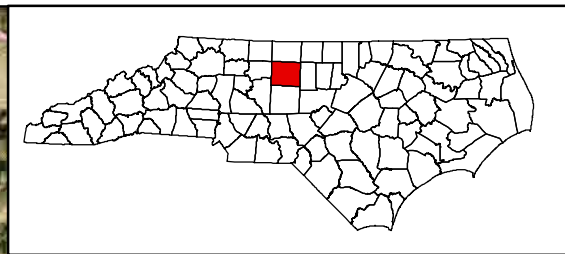
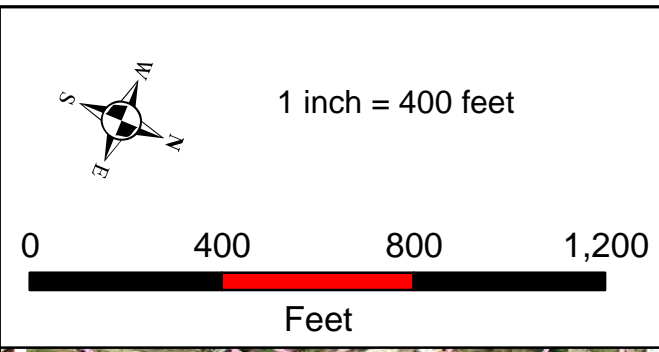
North Carolina Department of Transportation  
 Division of Highways  
 Project Development & Environmental Analysis Branch

Title:  
**JURISDICTIONAL FEATURERES AND PROPERTY OWNER BOUNDARIES**

Project:  
 Proposed widening of US 220 from SR 2182 to 0.2 miles north of SR 2313

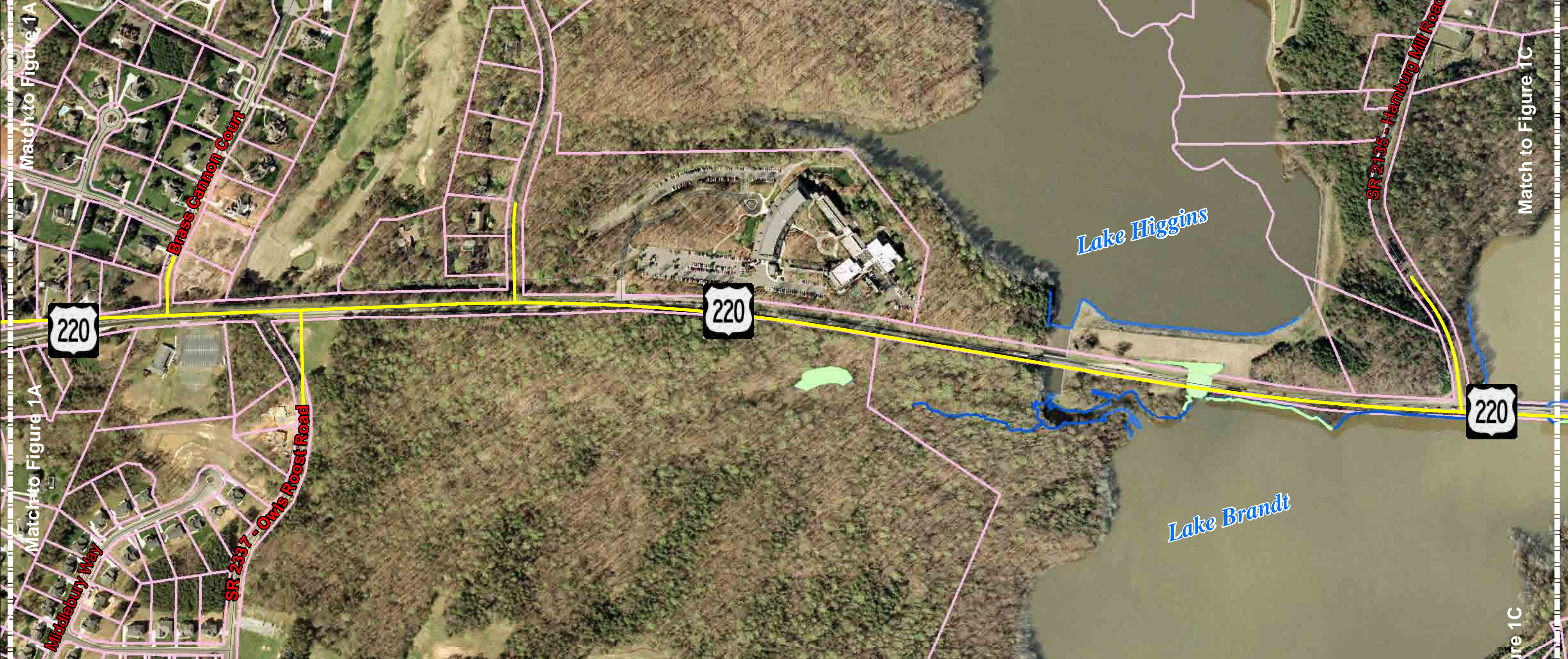
Division: 7	TIP#: R-2309 AB
Date: Dec. 2010	WBS: 34418.1.4
County: <b>GUILFORD</b>	

FIGURE  
**1A**



**LEGEND**

Guilford Parcels	
Project Center Line	
Streams	
Wetlands	



North Carolina Department  
of Transportation  
Division of Highways  
Project Development &  
Environmental Analysis Branch

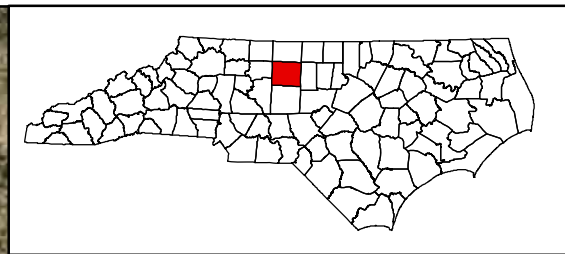
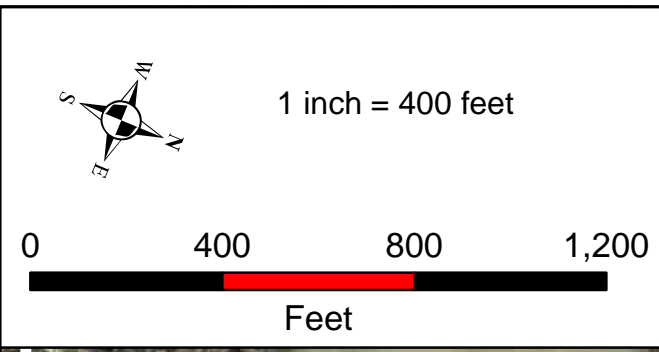
Title:  
**JURISDICTIONAL FEATURERES AND  
PROPERTY OWNER BOUNDARIES**

Project:  
Proposed widening of US 220 from SR 2182  
to 0.2 miles north of SR 2313

Division: 7	TIP#: R-2309 AB
Date: Dec. 2010	WBS: 34418.1.4
County: <b>GUILFORD</b>	

FIGURE  
**1B**

Match to Figure 1C



LEGEND	
Guilford Parcels	
Project Center Line	
Streams	
Wetlands	



North Carolina Department of Transportation  
 Division of Highways  
 Project Development &  
 Environmental Analysis Branch

Title:  
**JURISDICTIONAL FEATURERES AND PROPERTY OWNER BOUNDARIES**

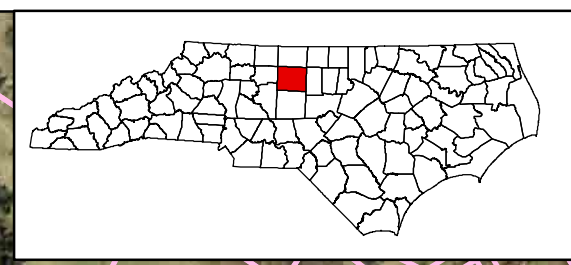
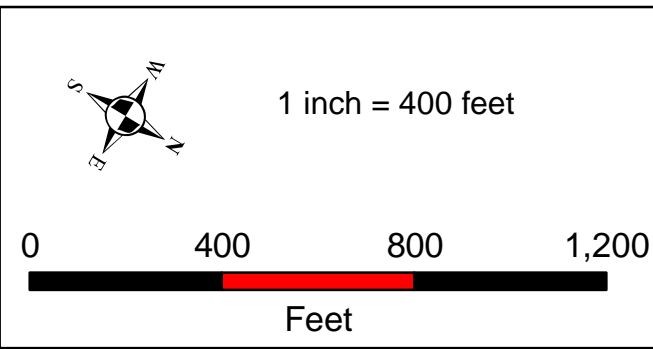
Project:  
 Proposed widening of US 220 from SR 2182 to 0.2 miles north of SR 2313

Division:	7	TIP#:	R-2309 AB
Date:	Dec. 2010	WBS:	34418.1.4
County:	<b>GUILFORD</b>		

FIGURE  
**1C**

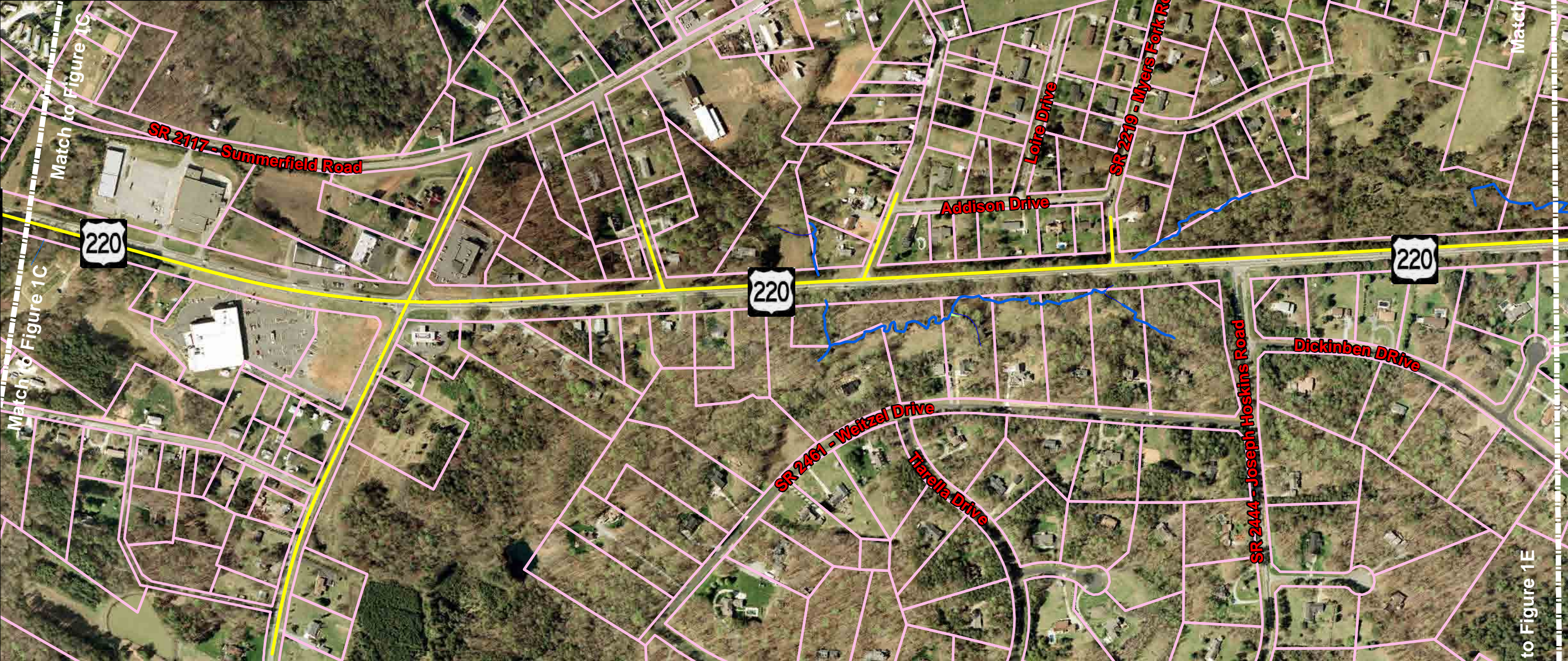

Match to Figure 1D

Match to Figure 1D



**LEGEND**

Guilford Parcels	
Project Center Line	
Streams	
Wetlands	

North Carolina Department of Transportation  
 Division of Highways  
 Project Development & Environmental Analysis Branch

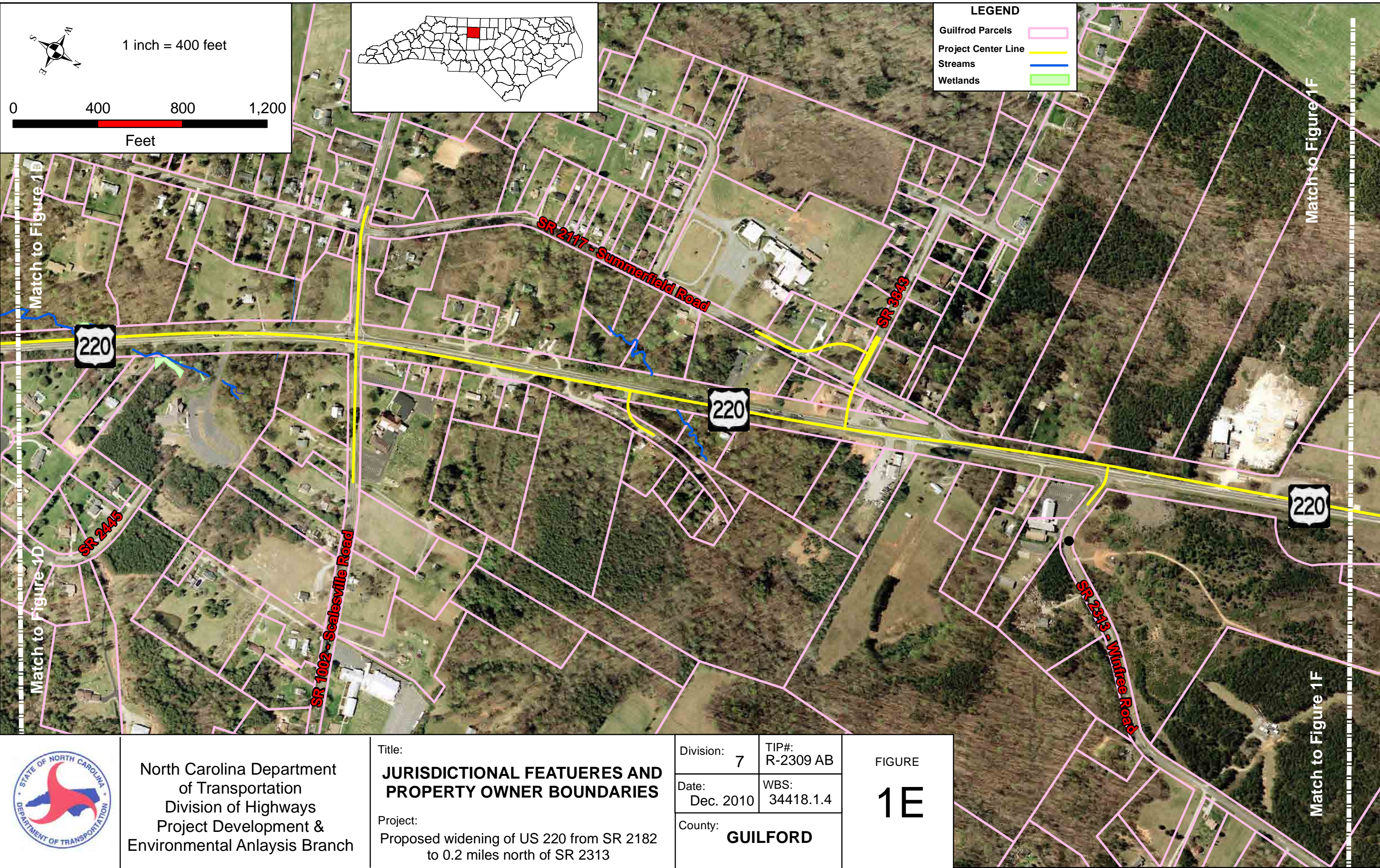
Title:  
**JURISDICTIONAL FEATURERES AND PROPERTY OWNER BOUNDARIES**

Project:  
 Proposed widening of US 220 from SR 2182 to 0.2 miles north of SR 2313

Division: 7	TIP#: R-2309 AB
Date: Dec. 2010	WBS: 34418.1.4
County: <b>GUILFORD</b>	

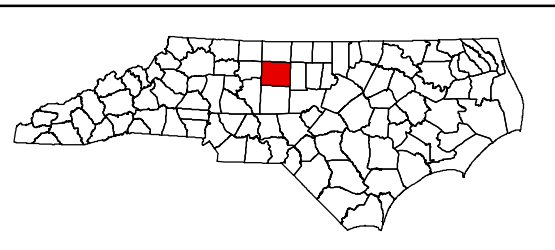
FIGURE  
**1D**





1 inch = 400 feet

0 400 800 1,200  
Feet



**LEGEND**

- Guilford Parcels
- Project Center Line
- Streams
- Wetlands

Match to Figure 1D

Match to Figure 1D

Match to Figure 1F

Match to Figure 1F



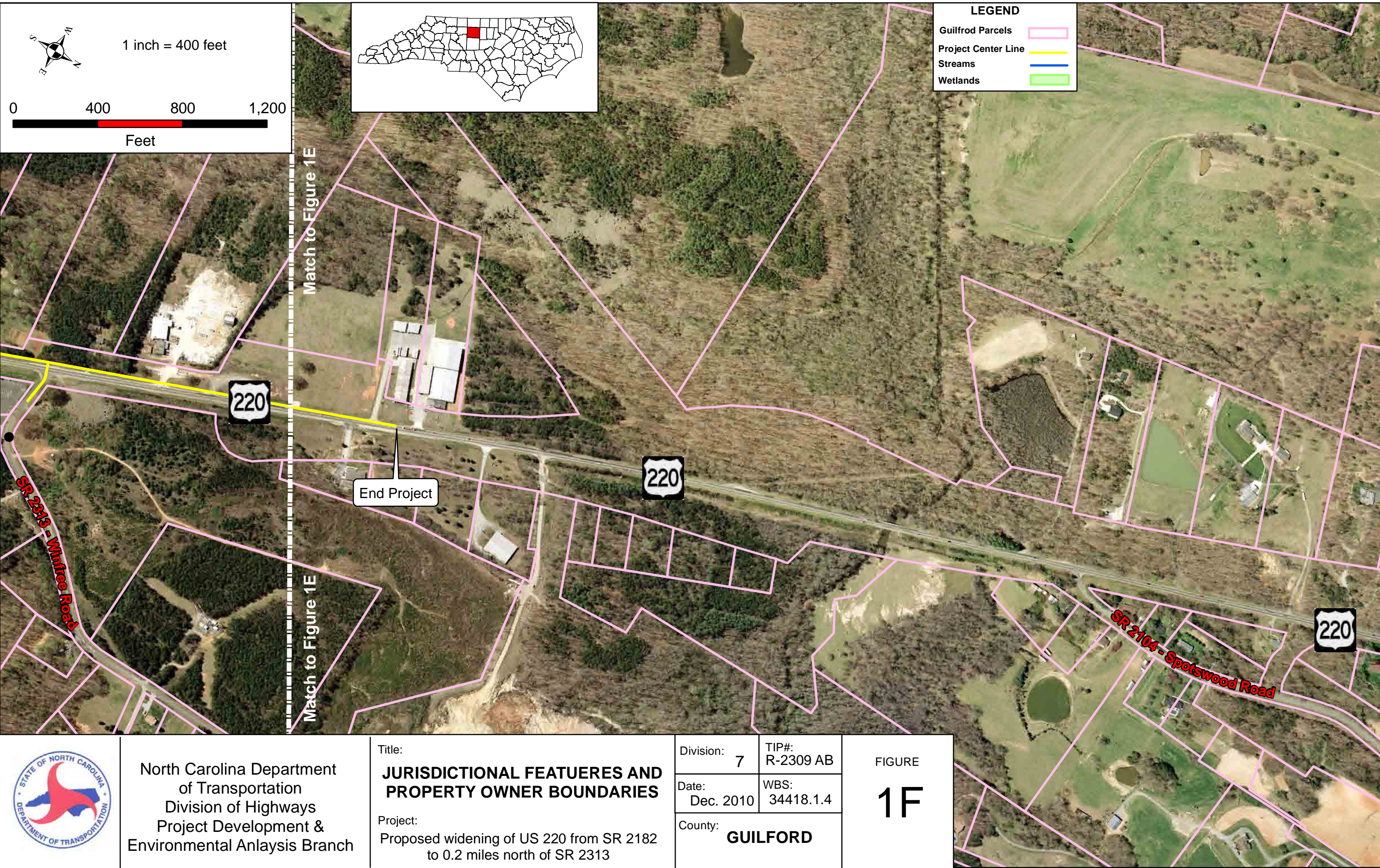
North Carolina Department of Transportation  
Division of Highways  
Project Development & Environmental Analysis Branch

Title:  
**JURISDICTIONAL FEATURERES AND PROPERTY OWNER BOUNDARIES**

Project:  
Proposed widening of US 220 from SR 2182 to 0.2 miles north of SR 2313

Division: 7	TIP#: R-2309 AB
Date: Dec. 2010	WBS: 34418.1.4
County: <b>GUILFORD</b>	

FIGURE  
**1E**



North Carolina Department of Transportation  
 Division of Highways  
 Project Development & Environmental Analysis Branch

Title:  
**JURISDICTIONAL FEATURERES AND PROPERTY OWNER BOUNDARIES**

Project:  
 Proposed widening of US 220 from SR 2182 to 0.2 miles north of SR 2313

Division: 7	TIP#: R-2309 AB
Date: Dec. 2010	WBS: 34418.1.4
County: <b>GUILFORD</b>	

FIGURE  
**1F**