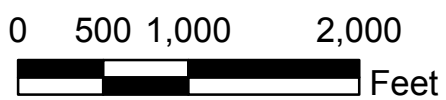
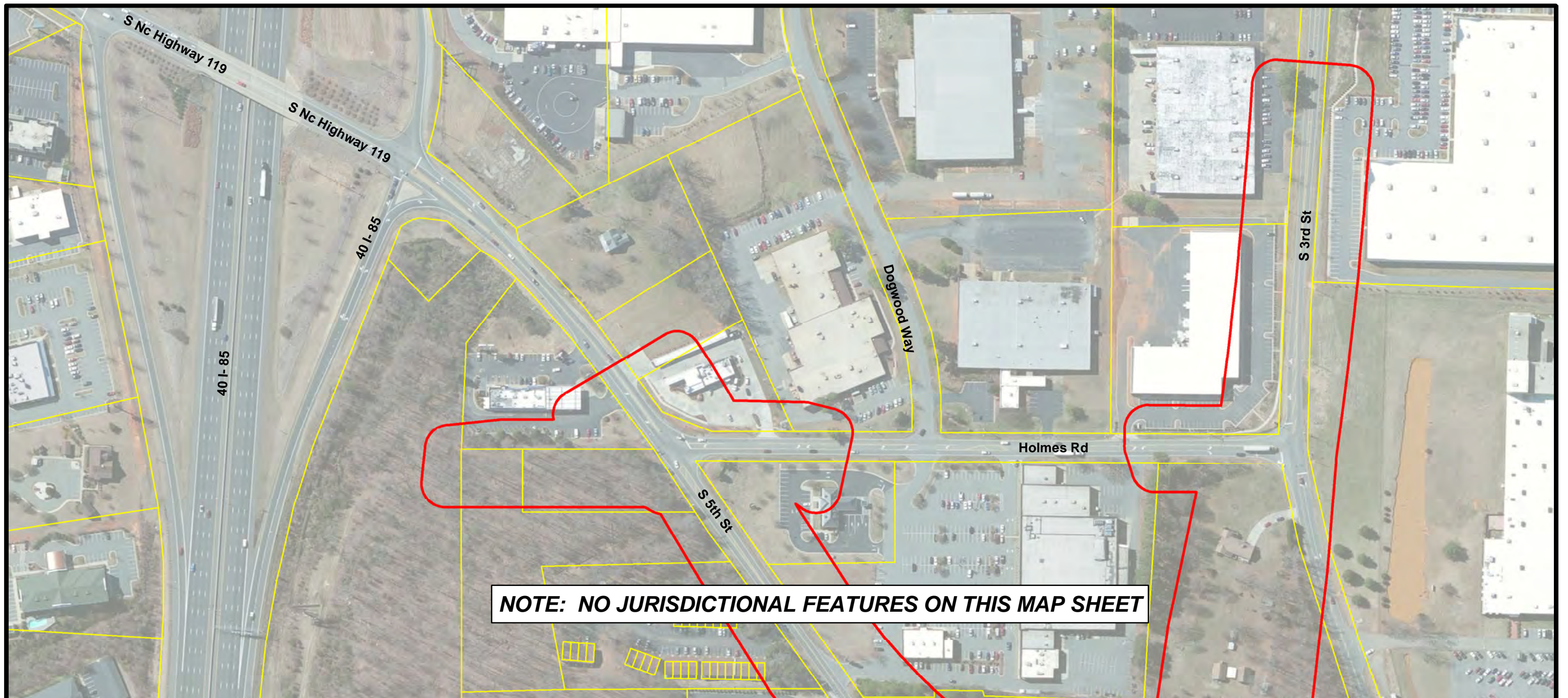


North Carolina Department of Transportation
 Project Development & Environmental Analysis Unit
 Proposed Relocation of NC 119 from I-85/40 to South of SR 1921
 Mebane, Alamance County
 TIP U-3109



Index Sheet



NOTE: NO JURISDICTIONAL FEATURES ON THIS MAP SHEET

Legend

Jurisdictional Streams

— perennial

- - - intermittent

Jurisdictional Wetlands

Jurisdictional Other Waters

Project Study Area

Parcel Boundary

Railroads

Source of aerial photography: Bing Maps

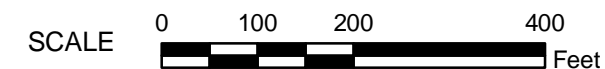
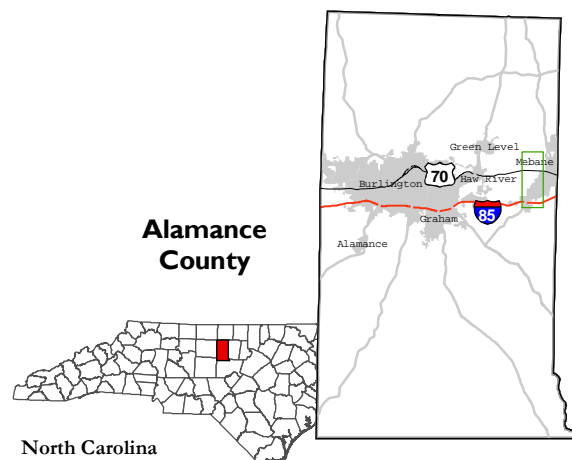


NORTH CAROLINA DEPARTMENT
OF TRANSPORTATION
DIVISION OF HIGHWAYS
PROJECT DEVELOPMENT
AND ENVIRONMENTAL ANALYSIS UNIT

Sheet 01 of 13

PROPOSED RELOCATION OF NC 119
FROM I-85 TO SOUTH OF SR 1921
MEBANE, ALAMANCE COUNTY
TIP U-3109A

WATERS OF THE U.S.
INCLUDING WETLANDS







Legend

Jurisdictional Streams

— perennial

- - - intermittent

 Jurisdictional Wetlands

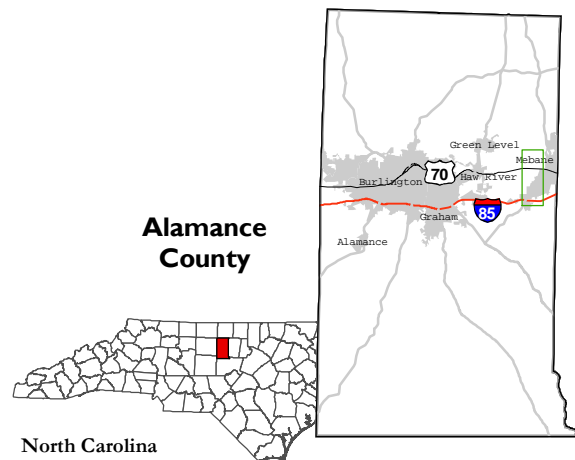
 Jurisdictional Other Waters

 Project Study Area

 Parcel Boundary

 Railroads

Source of aerial photography: Bing Maps

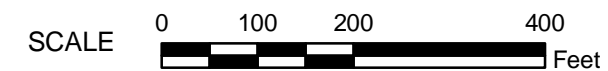


Sheet 02 of 13

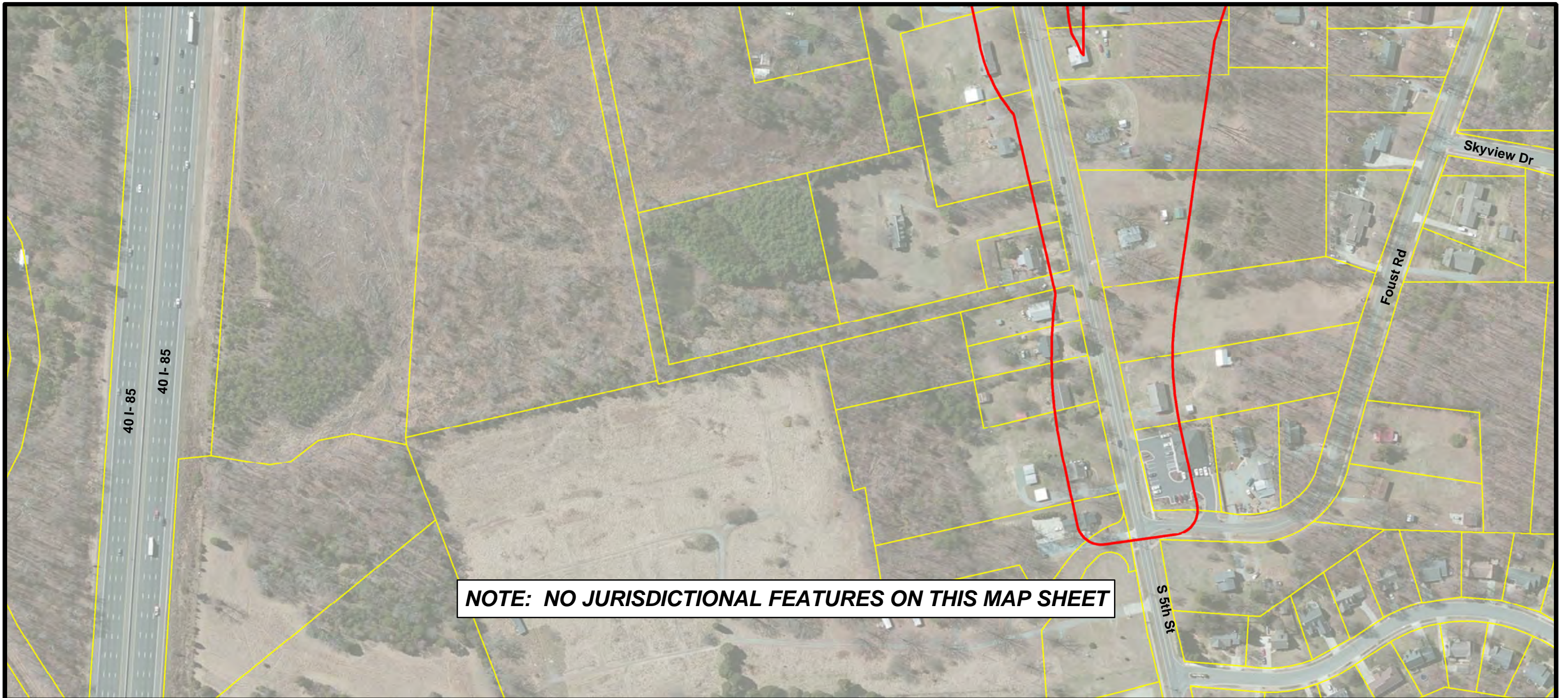


NORTH CAROLINA DEPARTMENT
OF TRANSPORTATION
DIVISION OF HIGHWAYS
PROJECT DEVELOPMENT
AND ENVIRONMENTAL ANALYSIS UNIT

PROPOSED RELOCATION OF NC 119
FROM I-85 TO SOUTH OF SR 1921
MEBANE, ALAMANCE COUNTY
TIP U-3109A



WATERS OF THE U.S.
INCLUDING WETLANDS



NOTE: NO JURISDICTIONAL FEATURES ON THIS MAP SHEET

Legend

Jurisdictional Streams

— perennial

- - - intermittent

Jurisdictional Wetlands

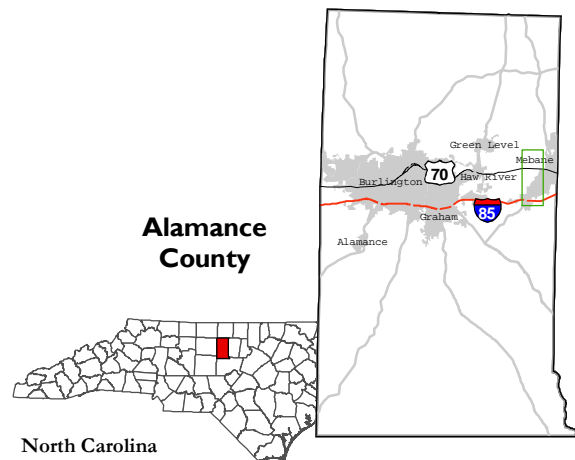
Jurisdictional Other Waters

Project Study Area

Parcel Boundary

Railroads

Source of aerial photography: Bing Maps

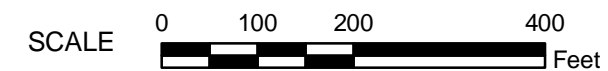


Sheet 03 of 13

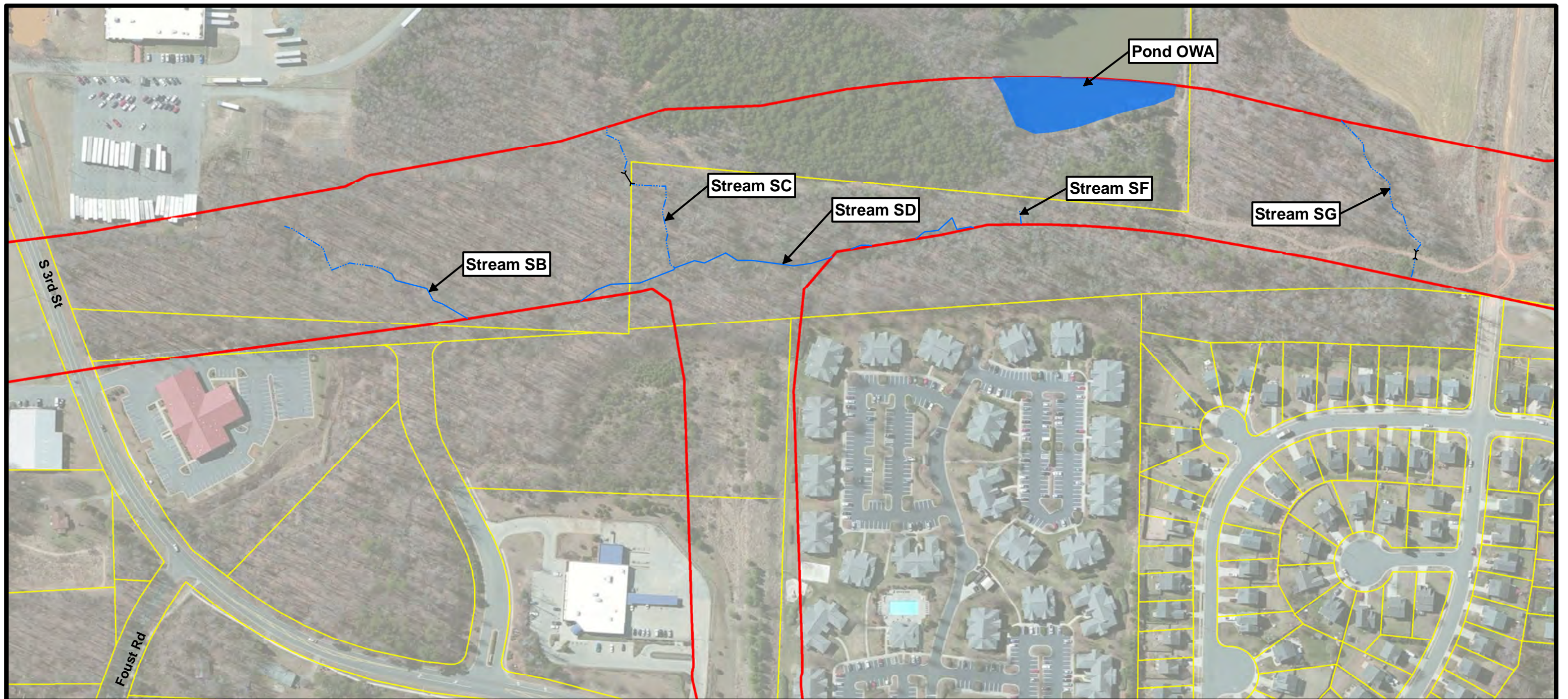


NORTH CAROLINA DEPARTMENT
OF TRANSPORTATION
DIVISION OF HIGHWAYS
PROJECT DEVELOPMENT
AND ENVIRONMENTAL ANALYSIS UNIT

PROPOSED RELOCATION OF NC 119
FROM I-85 TO SOUTH OF SR 1921
MEBANE, ALAMANCE COUNTY
TIP U-3109A



WATERS OF THE U.S.
INCLUDING WETLANDS



Legend

Jurisdictional Streams

- perennial
- - - intermittent

 Jurisdictional Wetlands

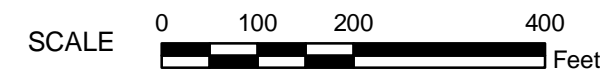
 Jurisdictional Other Waters

 Project Study Area

 Parcel Boundary

+ + Railroads

Source of aerial photography: Bing Maps



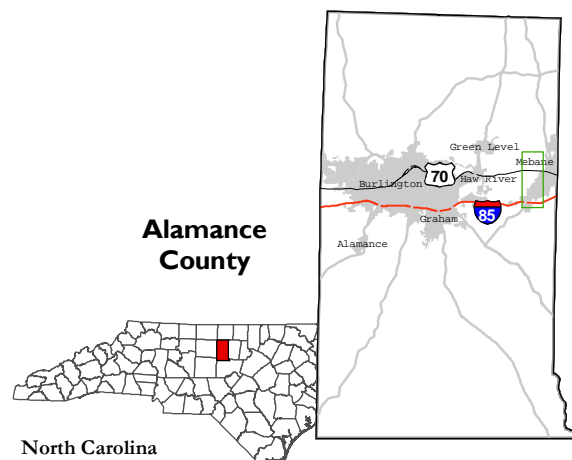
Sheet 04 of 13



NORTH CAROLINA DEPARTMENT
OF TRANSPORTATION
DIVISION OF HIGHWAYS
PROJECT DEVELOPMENT
AND ENVIRONMENTAL ANALYSIS UNIT

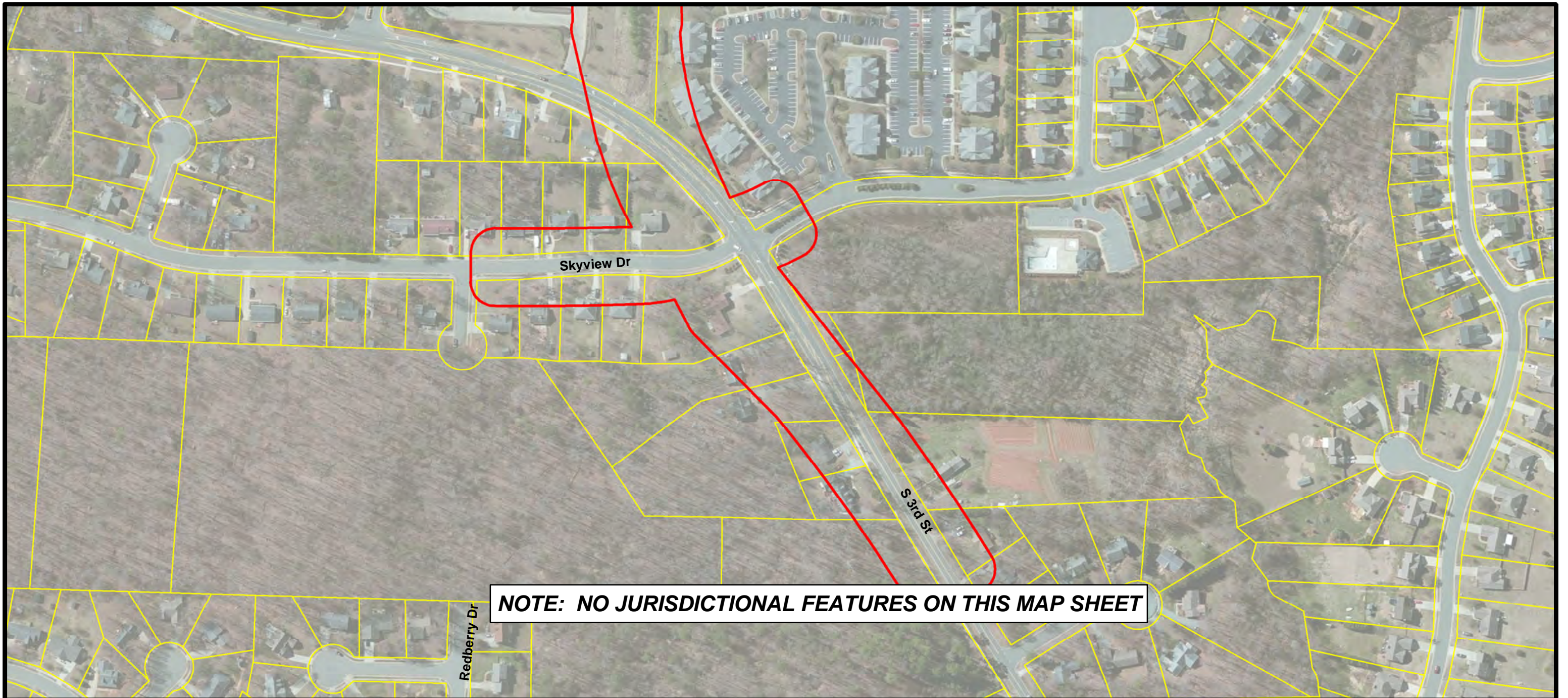
PROPOSED RELOCATION OF NC 119
FROM I-85 TO SOUTH OF SR 1921
MEBANE, ALAMANCE COUNTY
TIP U-3109A

WATERS OF THE U.S.
INCLUDING WETLANDS



**Alamance
County**

North Carolina



NOTE: NO JURISDICTIONAL FEATURES ON THIS MAP SHEET

Legend

Jurisdictional Streams

— perennial

- - - intermittent

Jurisdictional Wetlands

Jurisdictional Other Waters

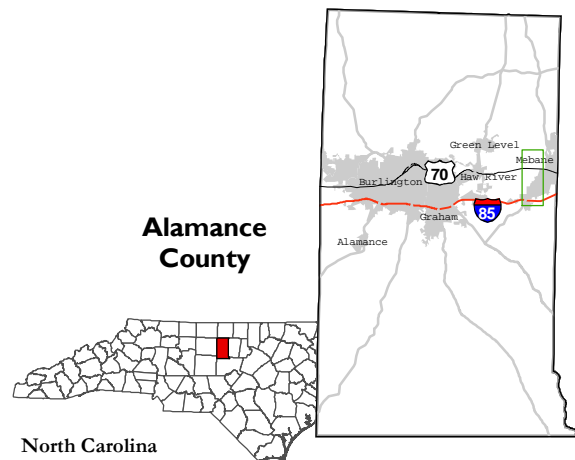
Project Study Area

Parcel Boundary

Railroads

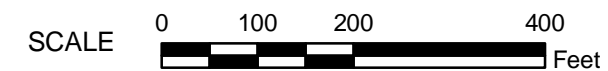
Source of aerial photography: Bing Maps

Sheet 05 of 13

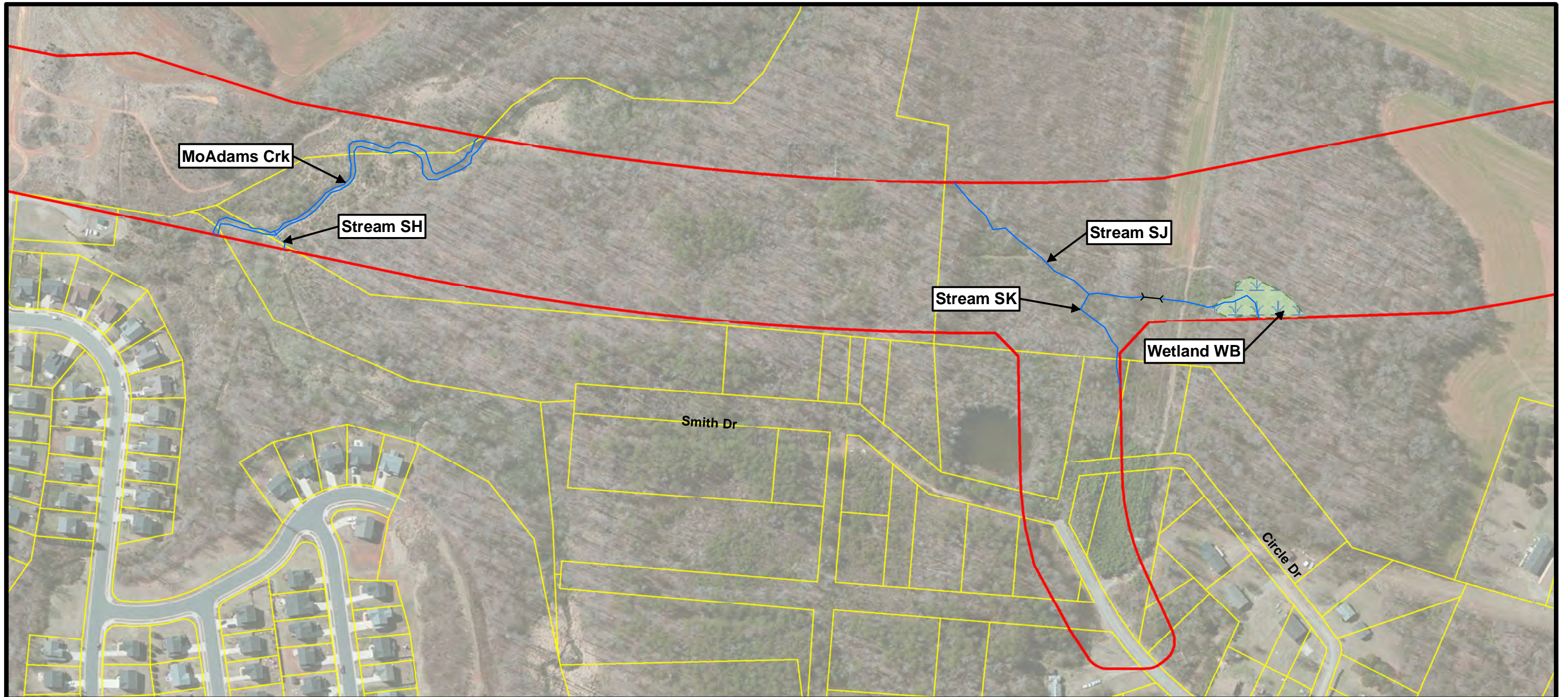


NORTH CAROLINA DEPARTMENT
OF TRANSPORTATION
DIVISION OF HIGHWAYS
PROJECT DEVELOPMENT
AND ENVIRONMENTAL ANALYSIS UNIT

PROPOSED RELOCATION OF NC 119
FROM I-85 TO SOUTH OF SR 1921
MEBANE, ALAMANCE COUNTY
TIP U-3109A



WATERS OF THE U.S.
INCLUDING WETLANDS



MoAdams Crk

Stream SH

Stream SJ

Stream SK

Wetland WB

Smith Dr

Circle Dr

Legend

Jurisdictional Streams

— perennial

- - - intermittent

Jurisdictional Wetlands

Jurisdictional Other Waters

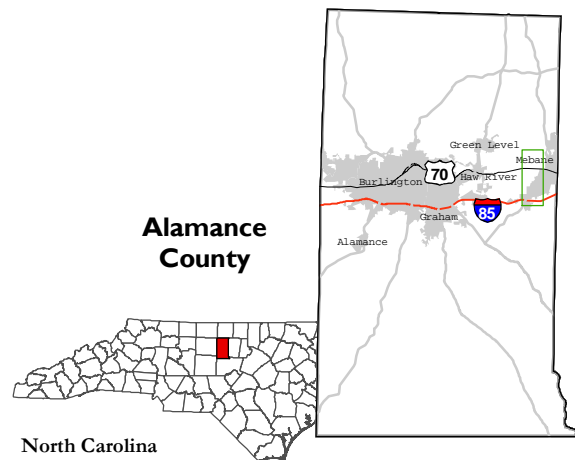
Project Study Area

Parcel Boundary

Railroads

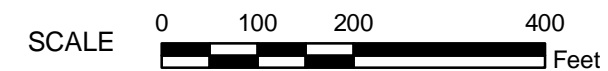
Source of aerial photography: Bing Maps

Sheet 06 of 13

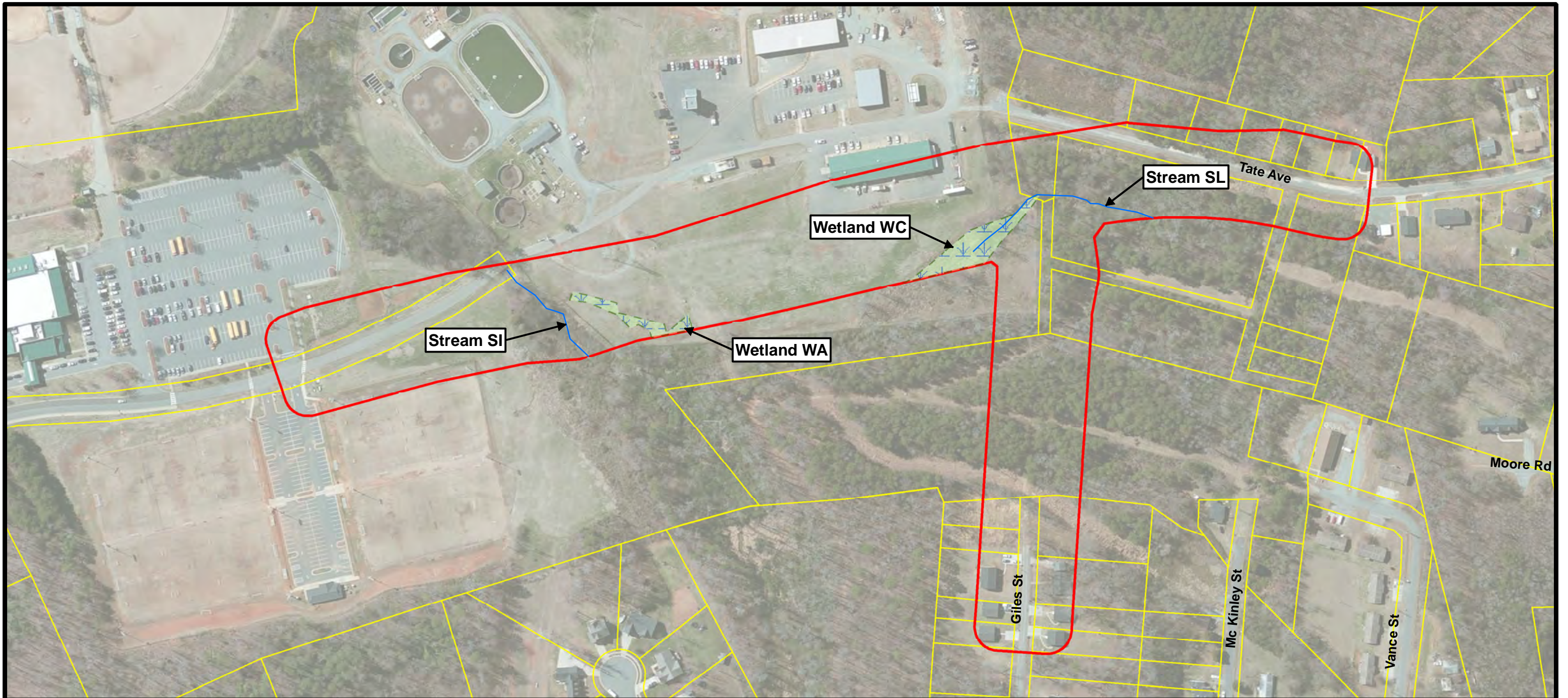


NORTH CAROLINA DEPARTMENT
OF TRANSPORTATION
DIVISION OF HIGHWAYS
PROJECT DEVELOPMENT
AND ENVIRONMENTAL ANALYSIS UNIT

PROPOSED RELOCATION OF NC 119
FROM I-85 TO SOUTH OF SR 1921
MEBANE, ALAMANCE COUNTY
TIP U-3109A



WATERS OF THE U.S.
INCLUDING WETLANDS

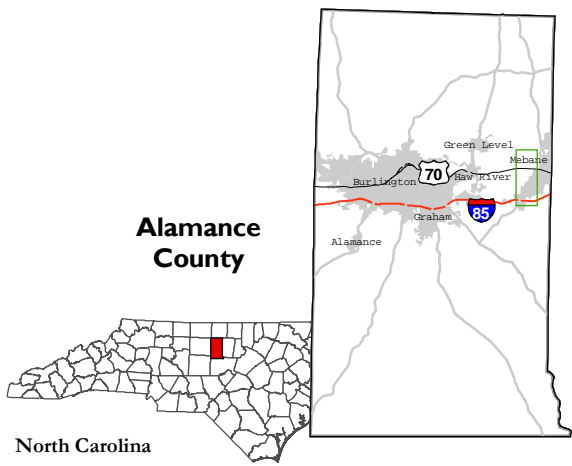
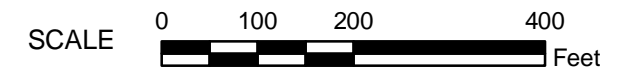


Sheet 07 of 13

Legend

- Jurisdictional Streams
 - perennial
 - - - intermittent
- Jurisdictional Wetlands
- Jurisdictional Other Waters
- Project Study Area
- Parcel Boundary
- + + Railroads

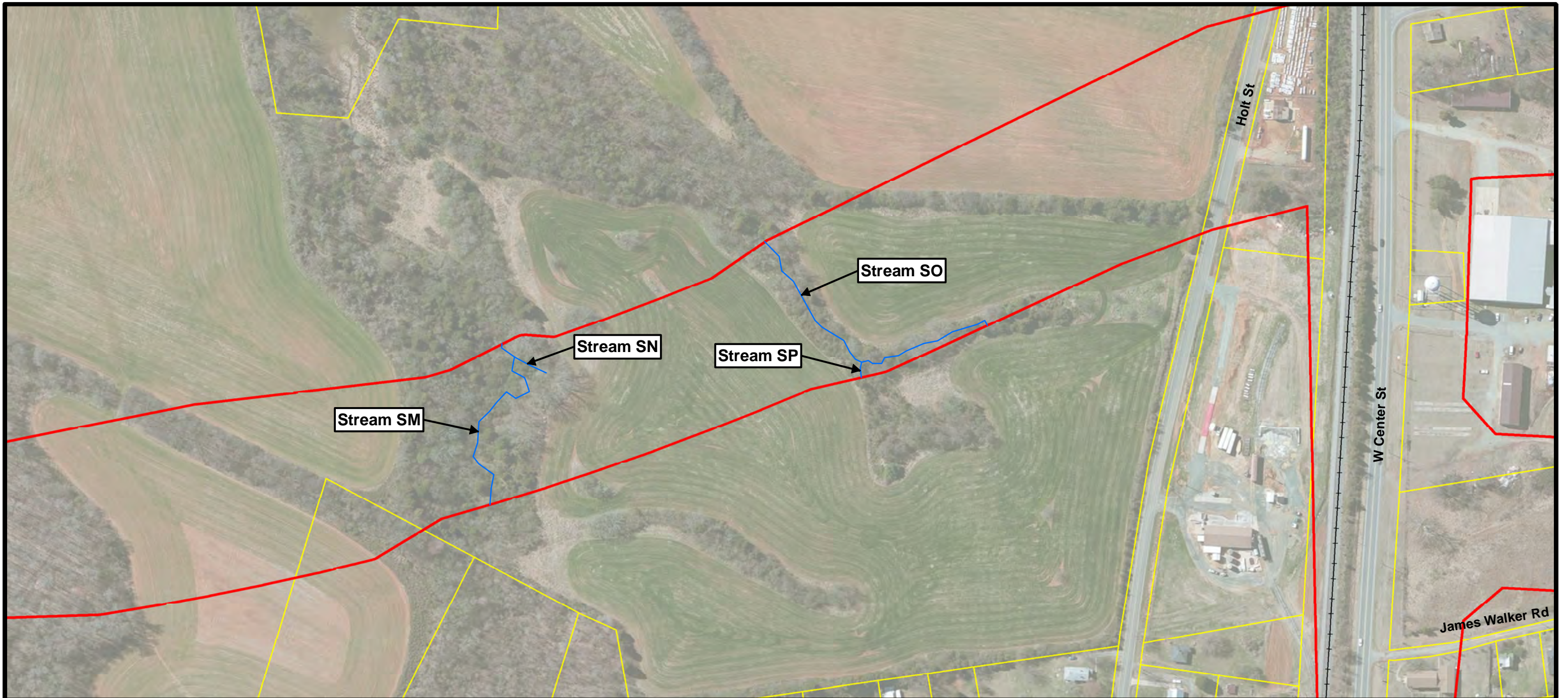
Source of aerial photography: Bing Maps



	NORTH CAROLINA DEPARTMENT OF TRANSPORTATION DIVISION OF HIGHWAYS PROJECT DEVELOPMENT AND ENVIRONMENTAL ANALYSIS UNIT
--	--

**PROPOSED RELOCATION OF NC 119
 FROM I-85 TO SOUTH OF SR 1921
 MEBANE, ALAMANCE COUNTY
 TIP U-3109A**

**WATERS OF THE U.S.
 INCLUDING WETLANDS**

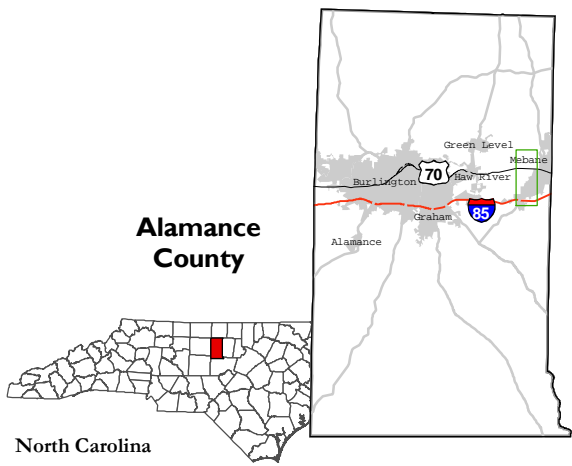
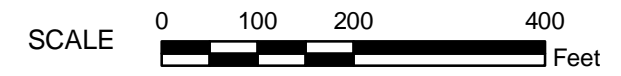



Sheet 08 of 13

Legend

- Jurisdictional Streams
 - perennial
 - - - intermittent
- Jurisdictional Wetlands
- Jurisdictional Other Waters
- Project Study Area
- Parcel Boundary
- + + + Railroads

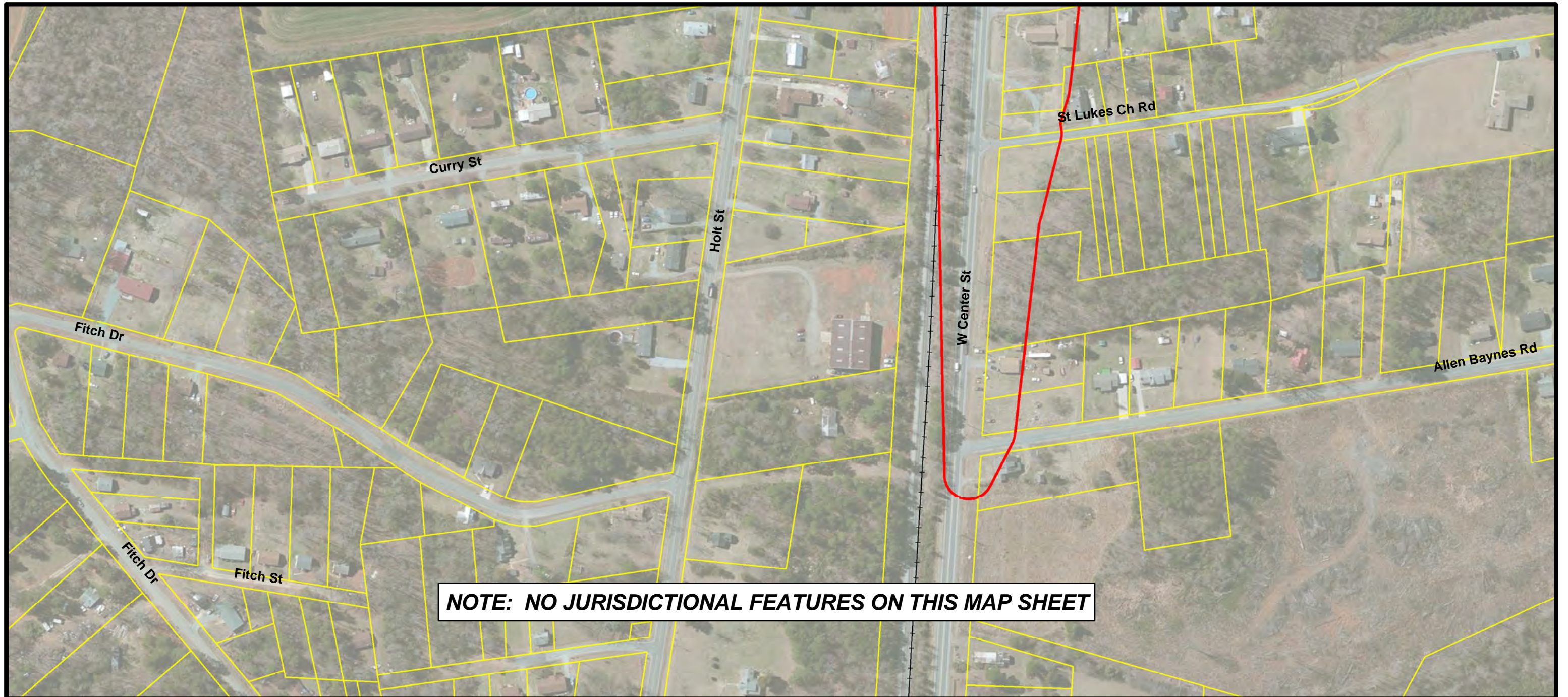
Source of aerial photography: Bing Maps




 NORTH CAROLINA DEPARTMENT
 OF TRANSPORTATION
 DIVISION OF HIGHWAYS
 PROJECT DEVELOPMENT
 AND ENVIRONMENTAL ANALYSIS UNIT

PROPOSED RELOCATION OF NC 119
 FROM I-85 TO SOUTH OF SR 1921
 MEBANE, ALAMANCE COUNTY
 TIP U-3109A

WATERS OF THE U.S.
 INCLUDING WETLANDS



NOTE: NO JURISDICTIONAL FEATURES ON THIS MAP SHEET

Legend

Jurisdictional Streams

— perennial

- - - intermittent

Jurisdictional Wetlands

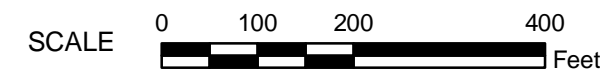
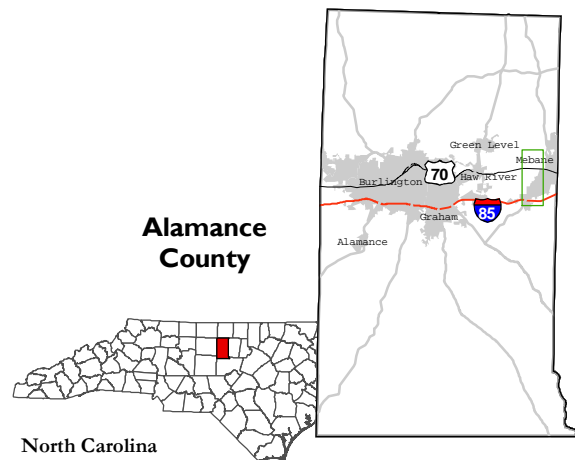
Jurisdictional Other Waters

Project Study Area

Parcel Boundary

Railroads

Source of aerial photography: Bing Maps



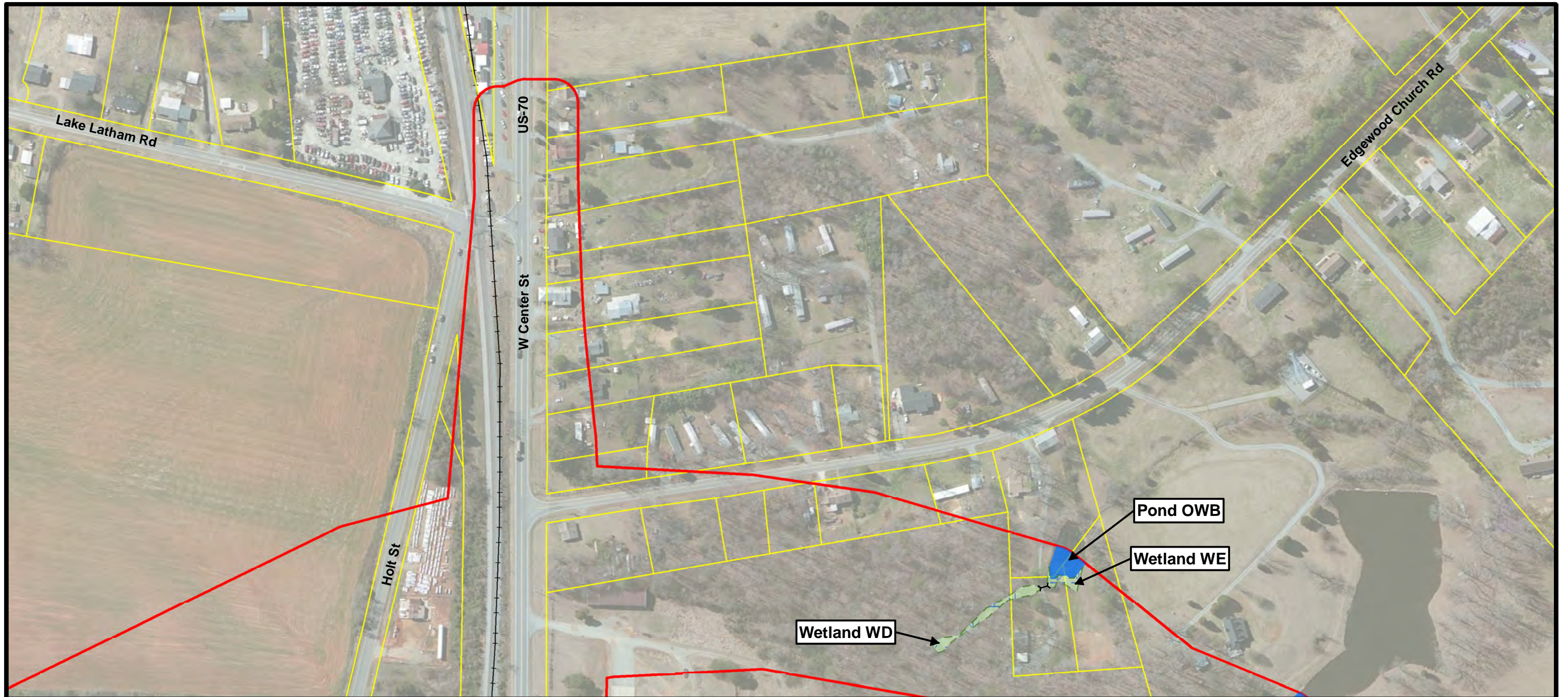
Sheet 09 of 13



NORTH CAROLINA DEPARTMENT
OF TRANSPORTATION
DIVISION OF HIGHWAYS
PROJECT DEVELOPMENT
AND ENVIRONMENTAL ANALYSIS UNIT

PROPOSED RELOCATION OF NC 119
FROM I-85 TO SOUTH OF SR 1921
MEBANE, ALAMANCE COUNTY
TIP U-3109A

WATERS OF THE U.S.
INCLUDING WETLANDS



Legend

Jurisdictional Streams

— perennial

- - - intermittent

Jurisdictional Wetlands

Jurisdictional Other Waters

Project Study Area

Parcel Boundary

Railroads

Source of aerial photography: Bing Maps

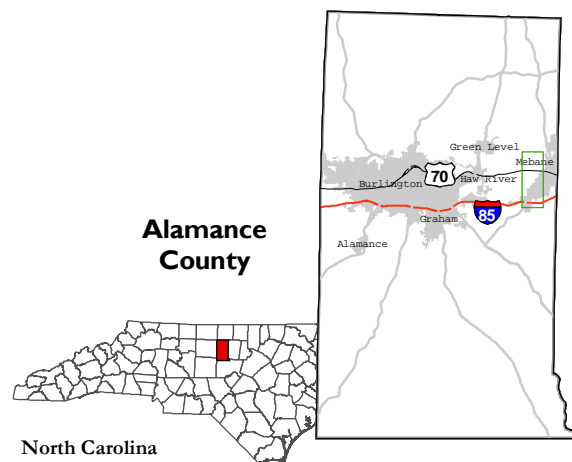


NORTH CAROLINA DEPARTMENT
OF TRANSPORTATION
DIVISION OF HIGHWAYS
PROJECT DEVELOPMENT
AND ENVIRONMENTAL ANALYSIS UNIT

Sheet 10 of 13

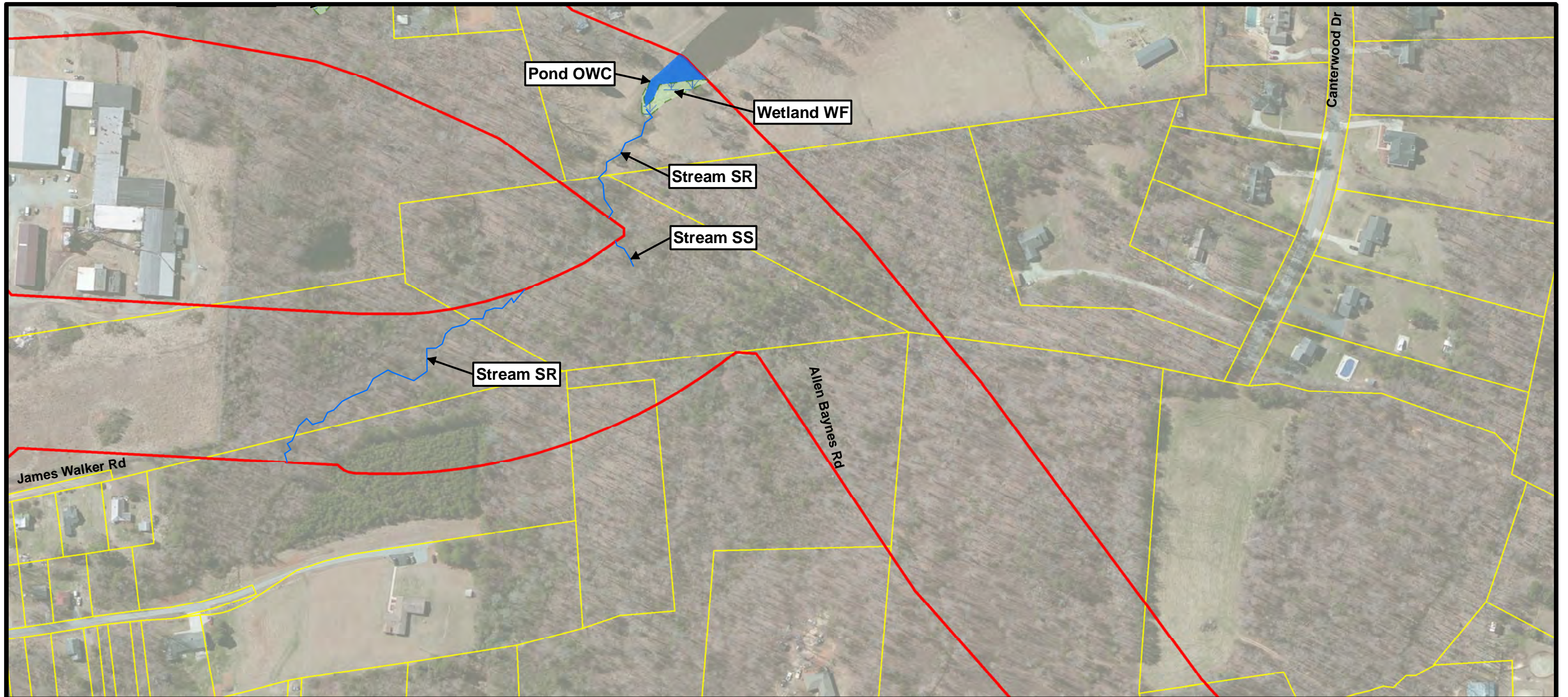
PROPOSED RELOCATION OF NC 119
FROM I-85 TO SOUTH OF SR 1921
MEBANE, ALAMANCE COUNTY
TIP U-3109A

WATERS OF THE U.S.
INCLUDING WETLANDS



**Alamance
County**

North Carolina



Legend

Jurisdictional Streams

- perennial
- - - intermittent

Jurisdictional Wetlands

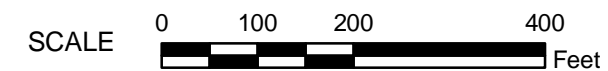
Jurisdictional Other Waters

Project Study Area

Parcel Boundary

Railroads

Source of aerial photography: Bing Maps



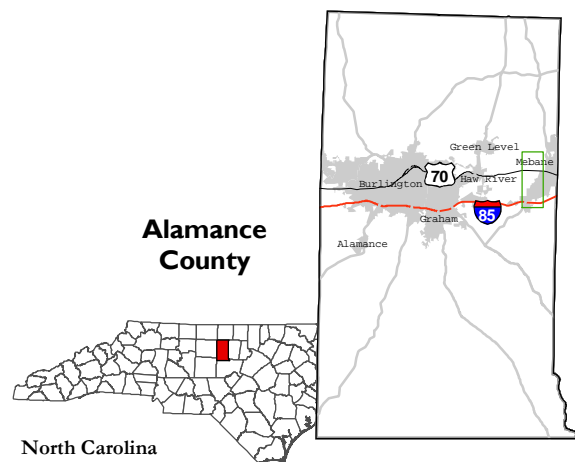
Sheet 11 of 13



NORTH CAROLINA DEPARTMENT
OF TRANSPORTATION
DIVISION OF HIGHWAYS
PROJECT DEVELOPMENT
AND ENVIRONMENTAL ANALYSIS UNIT

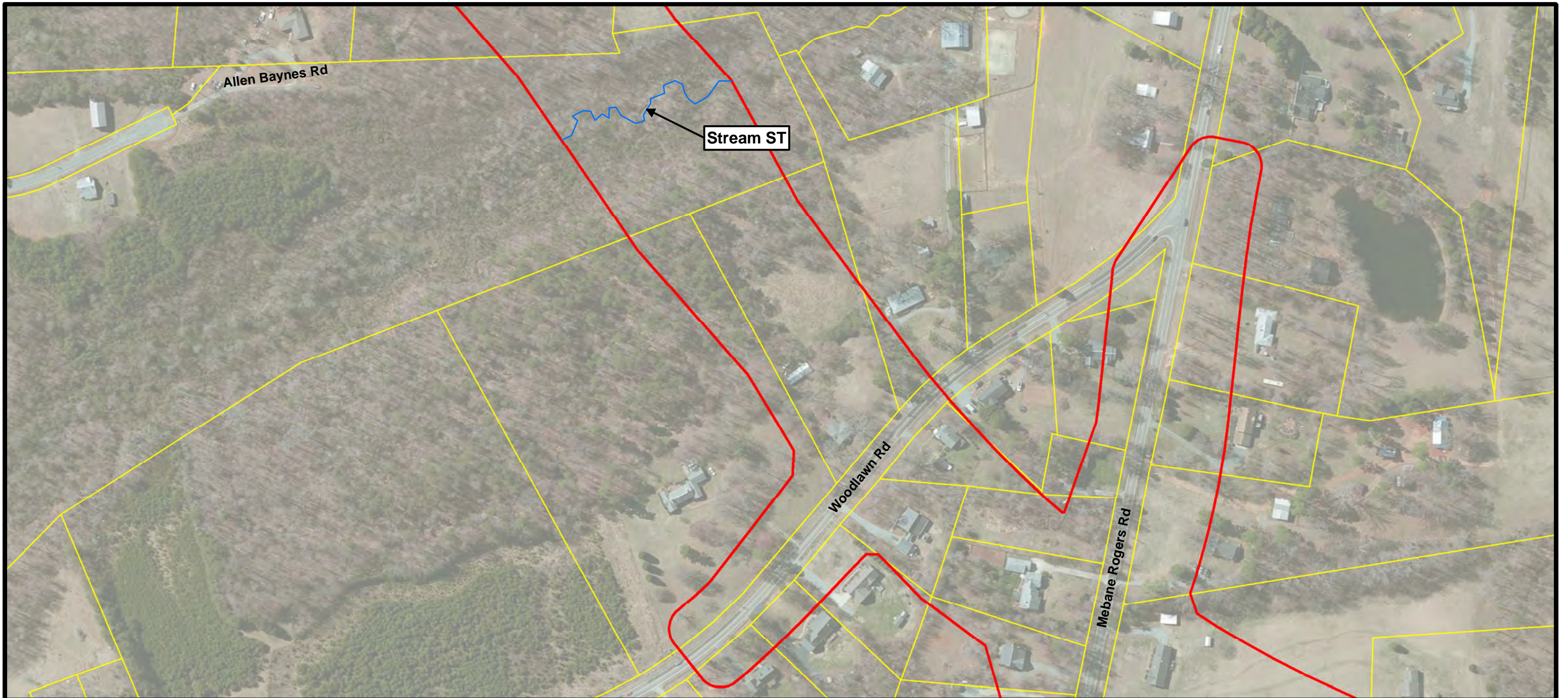
PROPOSED RELOCATION OF NC 119
FROM I-85 TO SOUTH OF SR 1921
MEBANE, ALAMANCE COUNTY
TIP U-3109A

WATERS OF THE U.S.
INCLUDING WETLANDS



**Alamance
County**

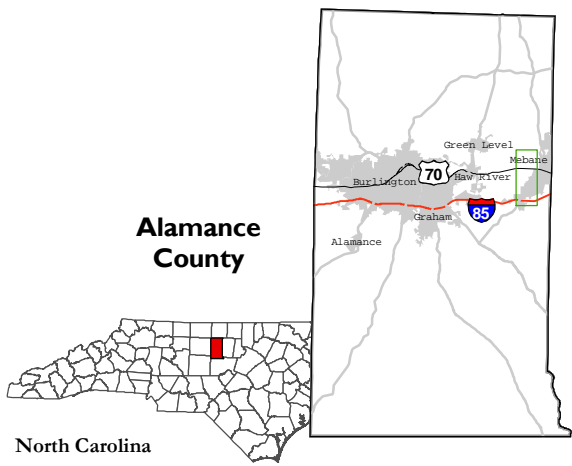
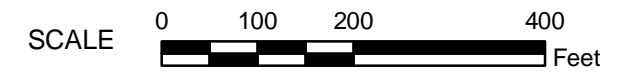
North Carolina



Legend

- Jurisdictional Streams
 - perennial
 - - - intermittent
- Jurisdictional Wetlands
- Jurisdictional Other Waters
- Project Study Area
- Parcel Boundary
- + Railroads

Source of aerial photography: Bing Maps



	NORTH CAROLINA DEPARTMENT OF TRANSPORTATION DIVISION OF HIGHWAYS PROJECT DEVELOPMENT AND ENVIRONMENTAL ANALYSIS UNIT
--	--

**PROPOSED RELOCATION OF NC 119
 FROM I-85 TO SOUTH OF SR 1921
 MEBANE, ALAMANCE COUNTY
 TIP U-3109A**

**WATERS OF THE U.S.
 INCLUDING WETLANDS**



Legend

Jurisdictional Streams

— perennial

- - - intermittent

Jurisdictional Wetlands

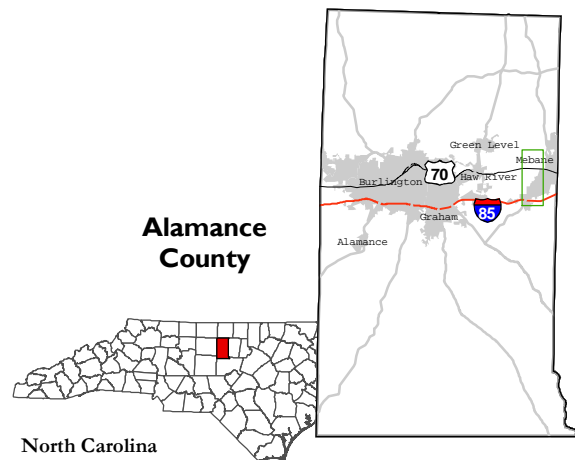
Jurisdictional Other Waters

Project Study Area

Parcel Boundary

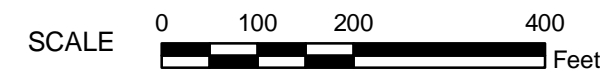
Railroads

Source of aerial photography: Bing Maps



**Alamance
County**

North Carolina



Sheet 13 of 13



NORTH CAROLINA DEPARTMENT
OF TRANSPORTATION
DIVISION OF HIGHWAYS
PROJECT DEVELOPMENT
AND ENVIRONMENTAL ANALYSIS UNIT

PROPOSED RELOCATION OF NC 119
FROM I-85 TO SOUTH OF SR 1921
MEBANE, ALAMANCE COUNTY
TIP U-3109A

WATERS OF THE U.S.
INCLUDING WETLANDS