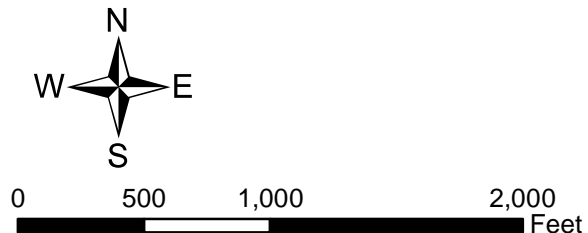
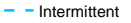
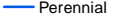
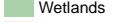
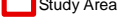
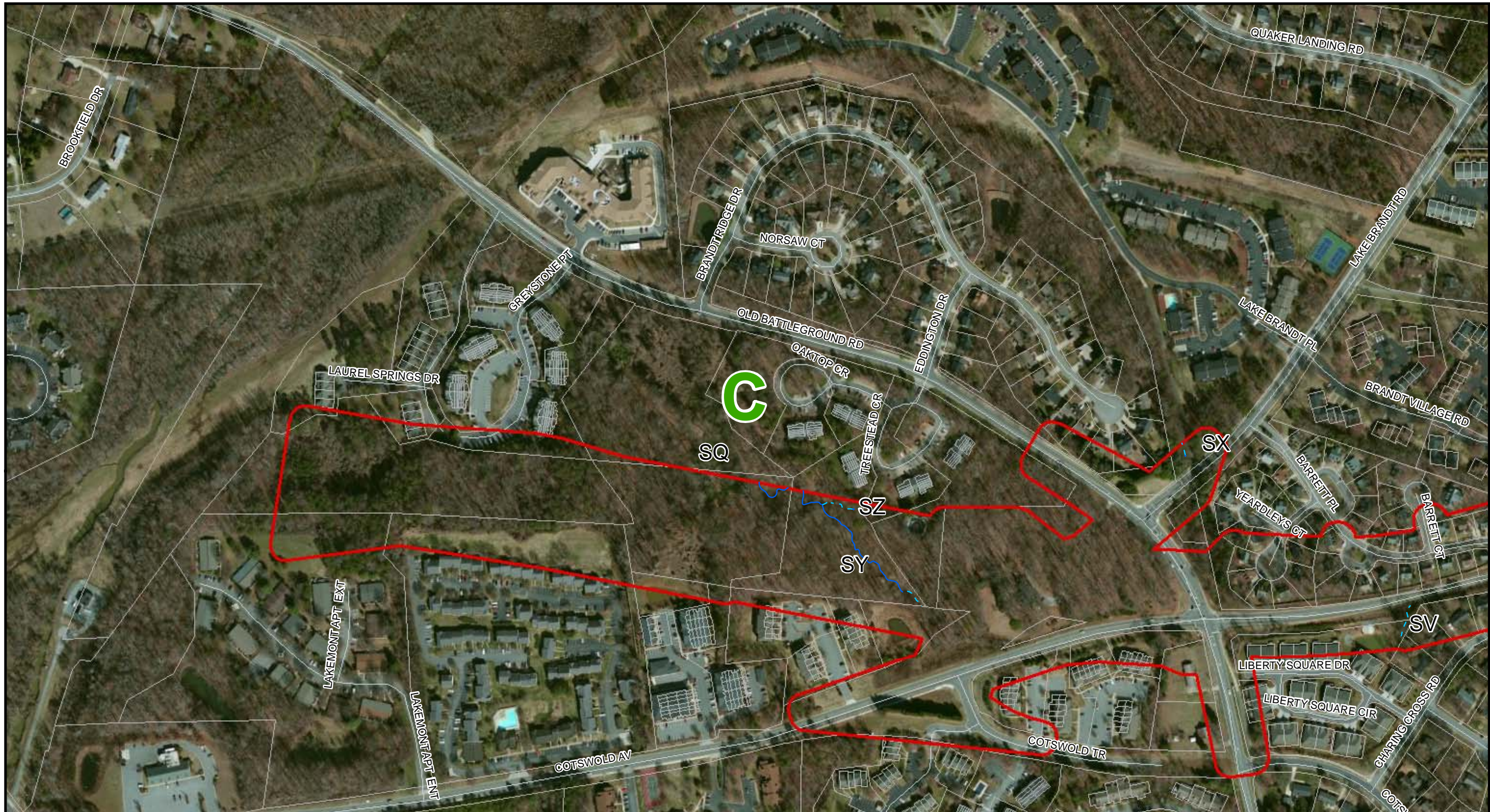



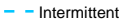
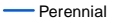
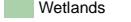
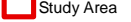
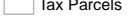
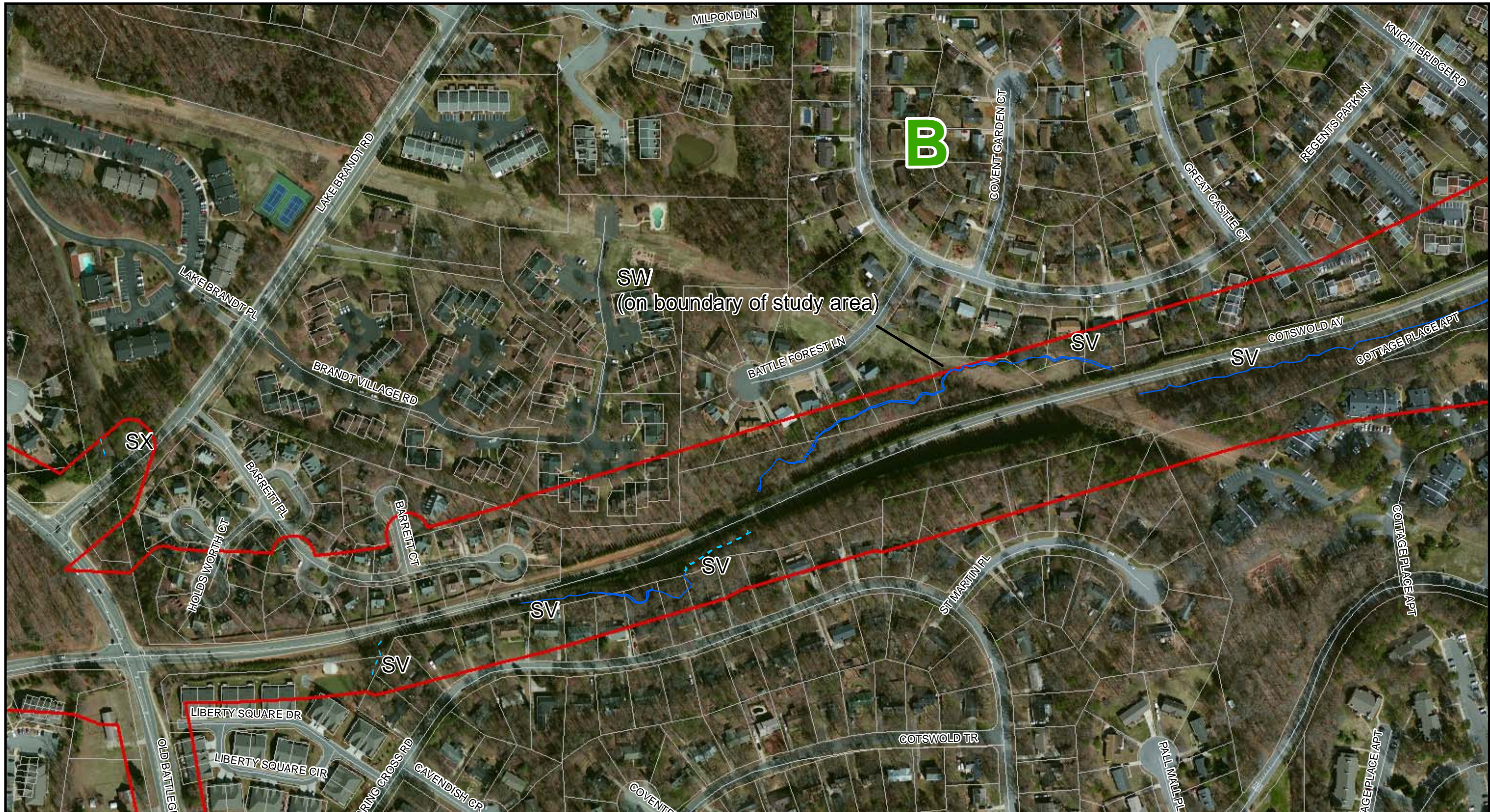



	Project:	<b>U-2524D Greensboro Western Loop (from US 220 to SR 2303) Guilford County, NC</b>	Title:	<b>Final JD Appeals Map</b>	Drawn By:	CF	Ckd By:	SC		<b>Legend</b>  Intermittent  Perennial  Wetlands  Study Area
				Figure #:	<b>Index</b>	Date:	Mar 7, 2014	Scale:		



 	Project:	<b>U-2524D Greensboro Western Loop (from US 220 to SR 2303) Guilford County, NC</b>	Title:	<b>Final JD Appeals Map</b>	Drawn By:	CF	Ckd By:	SC		<b>Legend</b>  Intermittent  Perennial  Wetlands  Study Area  Tax Parcels
				Figure #:	<b>C</b>	Date:	Mar 7, 2014	Scale:		
					Project #:	EN13.017.00				

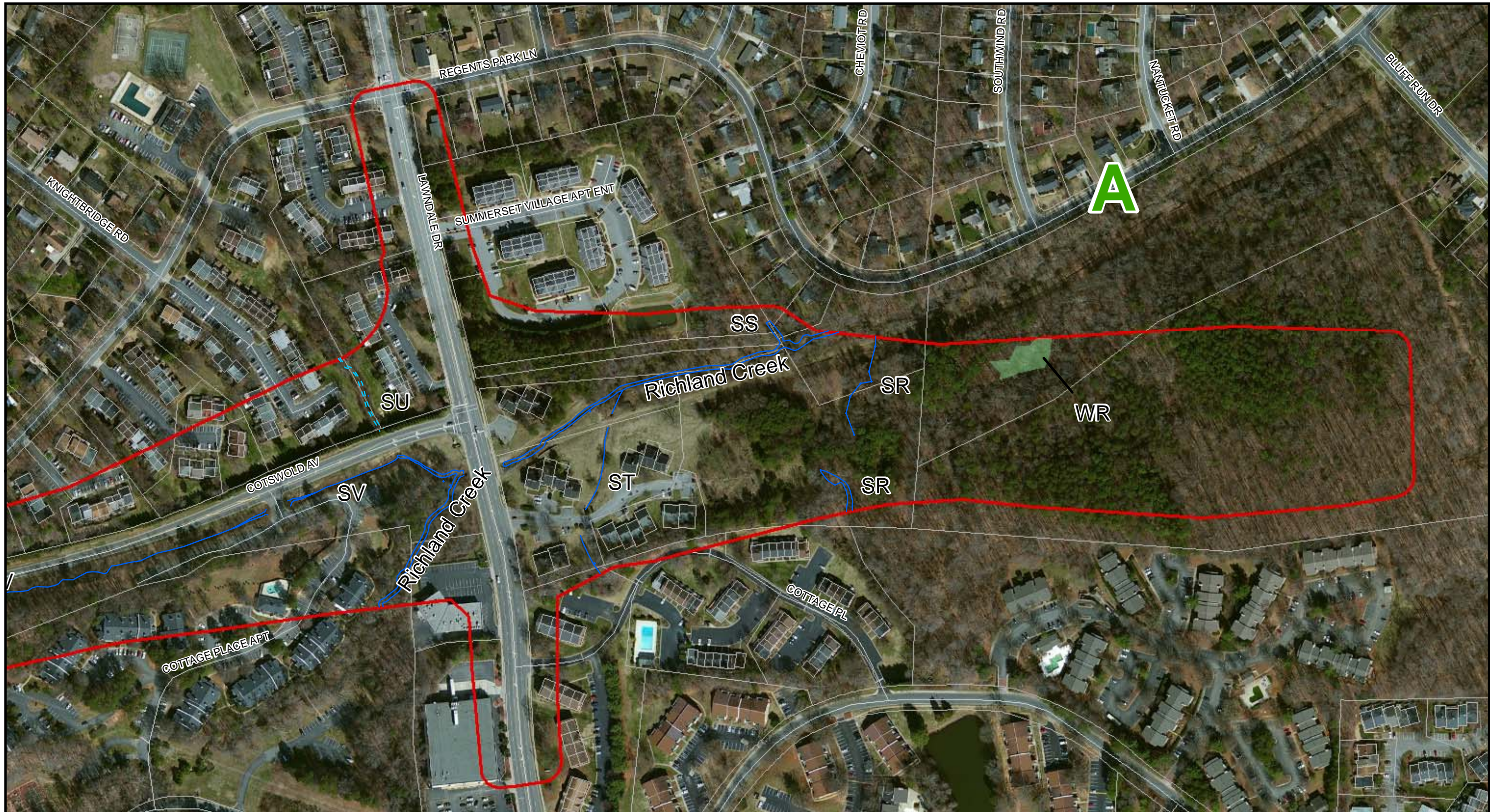




 	Project:	<b>U-2524D Greensboro Western Loop (from US 220 to SR 2303) Guilford County, NC</b>	Title:	<b>Final JD Appeals Map</b>	Drawn By:	CF	Ckd By:	SC
			Figure #:	<b>B</b>	Date:	Mar 7, 2014	Scale:	1" = 250'
					Project #:	EN13.017.00		

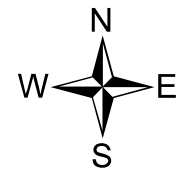


**Legend**

- Intermittent
- Perennial
- Wetlands
- Study Area
- Tax Parcels



 	Project:	<b>U-2524D Greensboro Western Loop (from US 220 to SR 2303) Guilford County, NC</b>	Title:	<b>Final JD Appeals Map</b>	Drawn By:	CF	Ckd By:	SC
			Figure #:	A	Date:	Mar 7, 2014	Scale:	1" = 250'
					Project #:	EN13.017.00		



0 125 250 500 Feet

**Legend**

- Intermittent
- Perennial
- Wetlands
- Study Area
- Tax Parcels