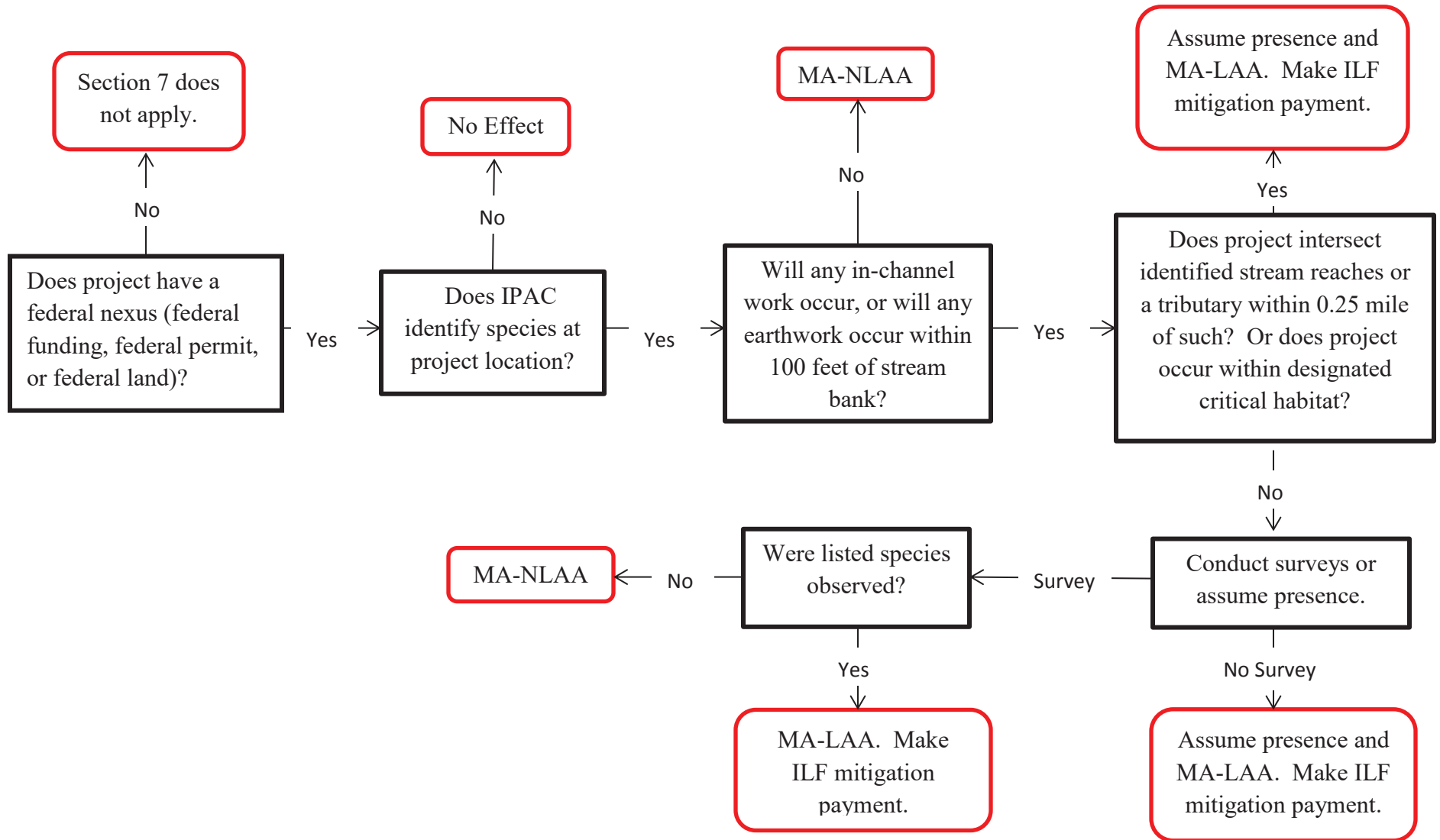


**Appendix B1. Section 7 Mussel Programmatic Process – Bridge Replacement with Bridge/Repair/Rehabilitation  
Divisions 1-8 for Dwarf Wedgemussel, Tar River Spnymussel, Yellow Lance, and Atlantic Pigtoe**



\*This programmatic process assumes that all normal BMPs and on-site conservation measures regarding design, construction, and erosion control are implemented.