




INNOVATIVE SOLUTIONS TO COMPLEX PROBLEMS




[www.ara.com](http://www.ara.com)

**Happy 50<sup>th</sup> Anniversary!**  
**1968 -2018**  
**Transportation Geotechnical**  
**Community**


Jerry A. DiMaggio,  
Senior Principal Engineer  
Applied Research Associates, Inc.  
[jdimaggio@ara.com](mailto:jdimaggio@ara.com)




NATIONAL SECURITY



ENERGY & ENVIRONMENT



INFRASTRUCTURE



HEALTH SOLUTIONS

© 2016 Applied Research Associates, Inc.

## Presentation Topics

- Background
- Agencies and persons
- Soil and rock parameters
- Subsurface Investigation Details
- Engineered Earthworks
- Earth Retaining structures
- Shallow Foundations
- Deep Foundations
- Pavements
- Geosynthetics

## **BUZZ WORDS with staying power in 2017!**

- Risk Assessment and Management
- Asset Management (TAMP)
- Performance Measures ?
- Design Life ?
- Serviceability Design ?
- Predicted Remaining Service Life?
- Sustainability
- Longevity

## **PROJECT DELIVERY TOOLS**

- D-B-B
- D-B
- CM-GC
- P3
- VALUE ENGINEERING
- ALTERNATIVE TECHNICAL CONCEPTS
- CONSTRUCTABILITY REVIEWS
- RISK MANAGEMENT REVIEWS
- COST ANALYSIS REVIEWS



## **Identification, Description and Classification of Soils**

### ■ **Identification**

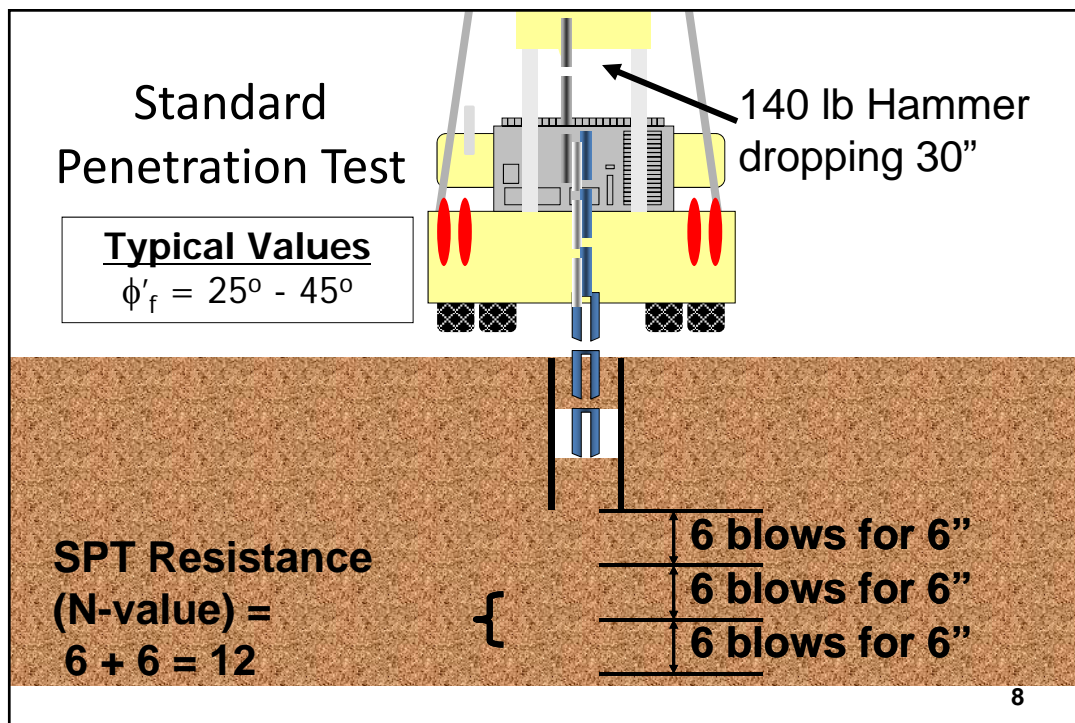
- *Process of determining the components of a given soil, e.g., gravel, sand, silt, clay, etc.*

### ■ **Description**

- *Process of estimating the relative percentage of each component of soil*
- *Description includes identification*

### ■ **Classification**

- *Laboratory based process of grouping geomaterials with similar engineering characteristics into categories*





$$\sum \eta_i \gamma_i Q_i \leq R_r = \phi R_n$$

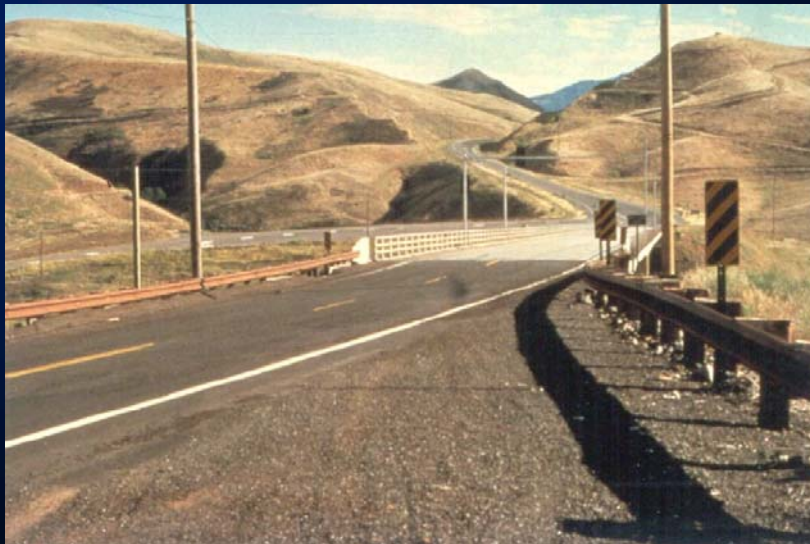
- $\eta_i$  = Load modifier (eta)
- $\gamma_i$  = Load factor (gamma)
- $Q_i$  = Force effect
- $R_r$  = Factored resistance
- $\phi$  = Resistance factor (phi)
- $R_n$  = Nominal resistance

9



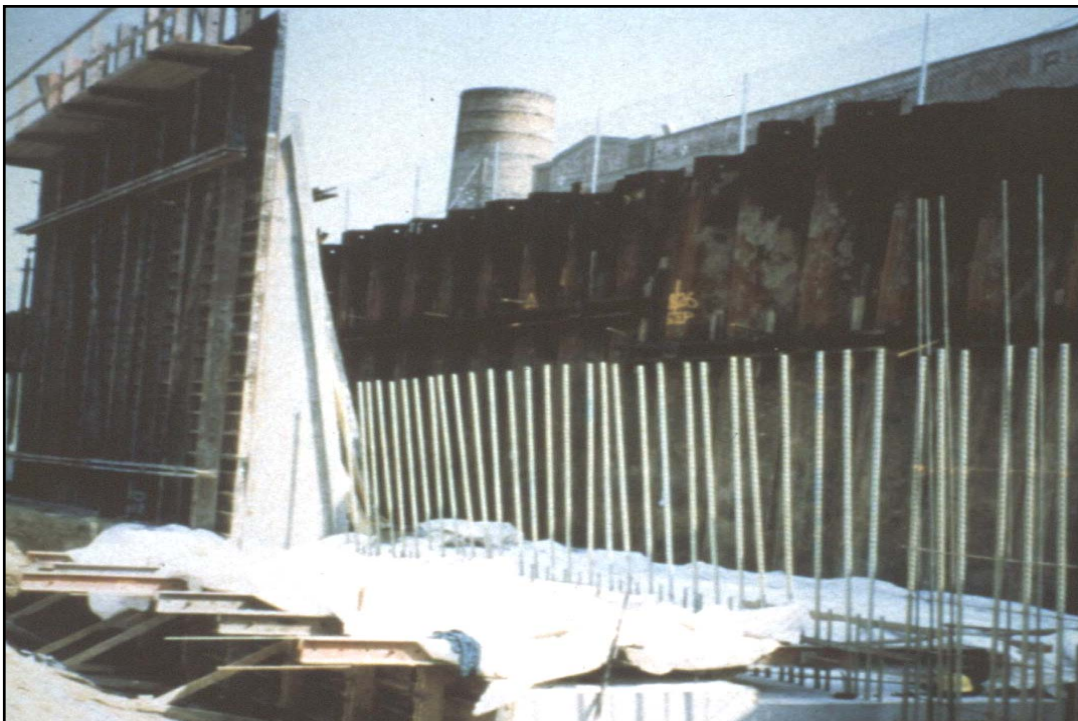


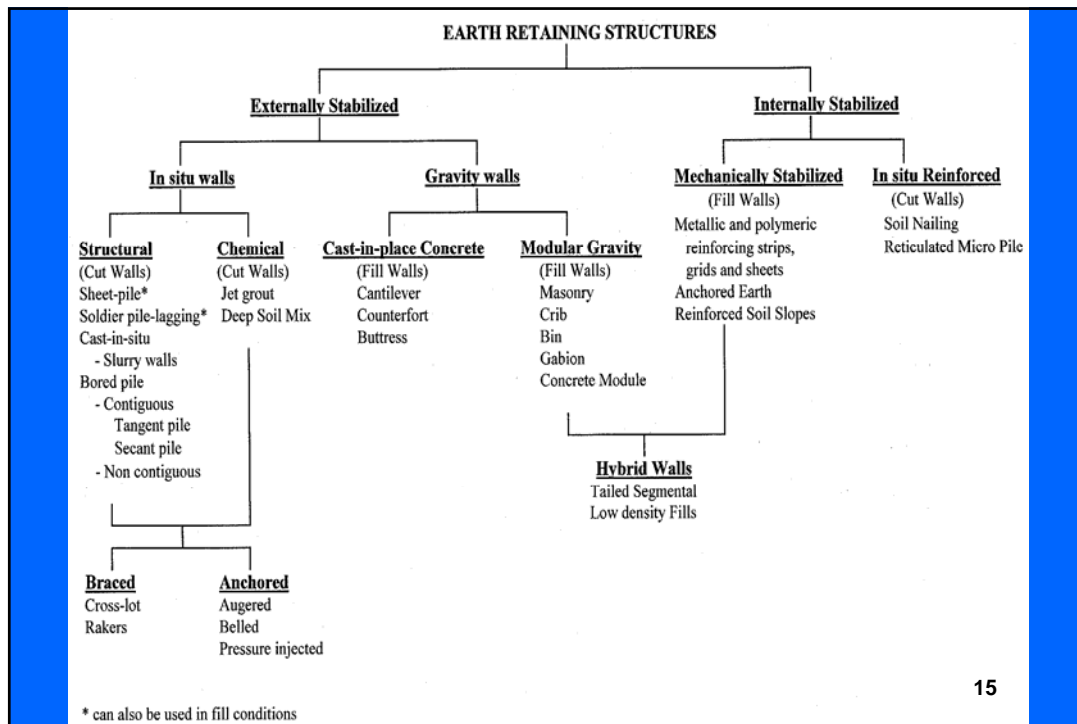
## *Internal Deformations*





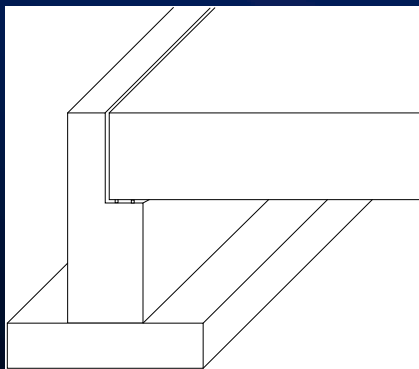
## ***External Deformations***



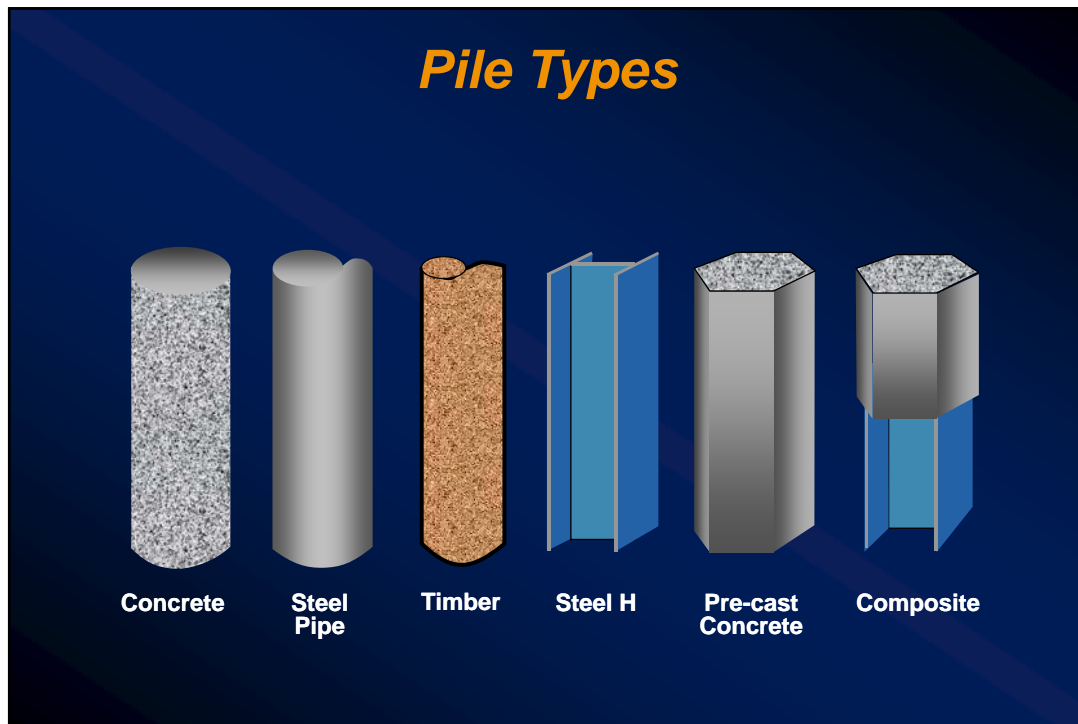


15

## Shallow Foundations

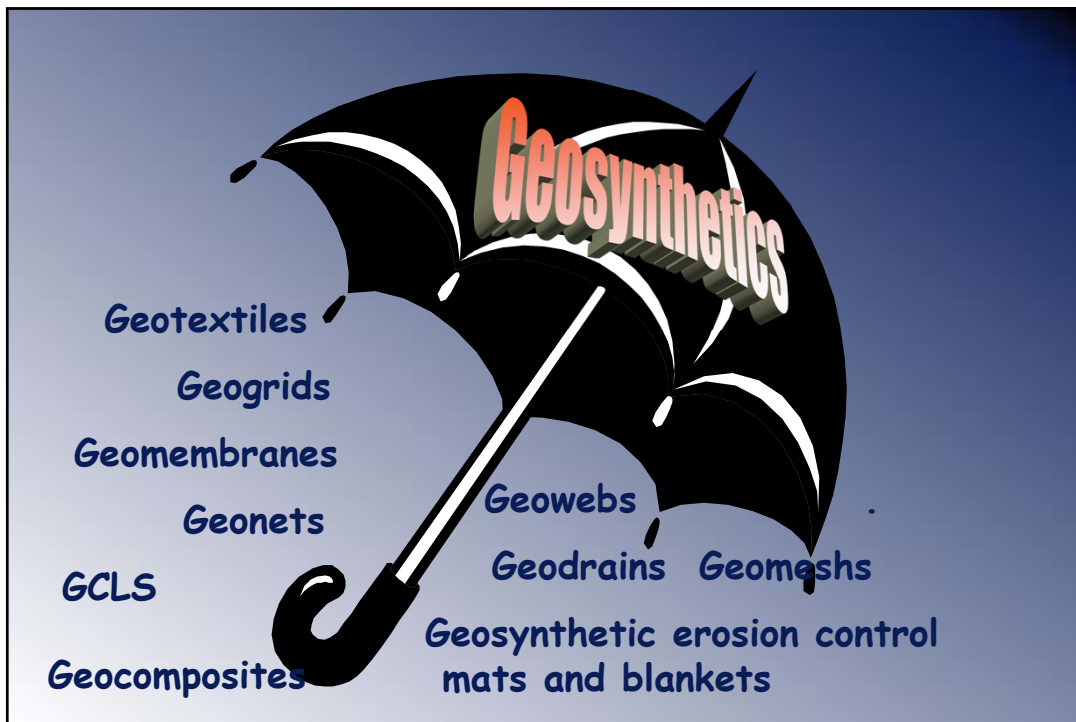






## **Geotechnical Issues in Pavement Design and Performance**

---



## ***Ground Improvement Categories***

- ***Consolidation***
- ***Load Distribution***
- ***Soil Densification***
- ***Reinforcement***
- ***Chemical Alteration***
- ***Load Transfer***

**Thank You for Your Attention!**

[jdimaggio@ara.com](mailto:jdimaggio@ara.com)

**Any Questions?**



22