

BREAKING NEWS

'4ALL Statewide Service Day' | Get Free Legal Information Today From 7a-7pm

CLOS




Best Detours: Hundreds of NC Roads Impassable a Week After Florence

400 road closures remain across the state after flooding from Hurricane Florence.

MONDAY (Sept. 25) UPDATE: I-40 has officially reopened after flooding due to Hurricane Florence.

400 road closures remain across the state.

U.S. 70 is now open to eastbound and westbound traffic with reduced lanes.



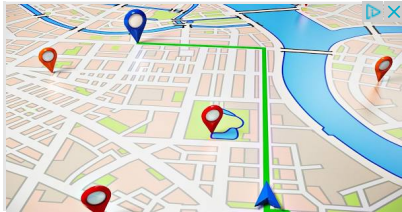
LCSO
@LenoirCountySO

ALERT: U.S. 70 is now open to all traffic, with reduced lanes. You can now go east and west on the highway.

16 7:15 AM - Sep 24, 2018

[19 people are talking about this](#)

SUNDAY (Sept. 24) UPDATE: I-95 is completely open again through North Carolina. Governor Roy Cc announced Sunday night the floodwaters that covered I-95 in the southeastern part of the state reced quicker than expected.



Click for Maps and Directions

QUICK MAPS AND DIRECTIONS Ad

The state says there are still around 455 road closures after Florence.

SATURDAY UPDATE from Governor Roy Cooper - Over 100 primary roads are closed and 519 total roads are closed statewide as of Saturday afternoon. Gov. Cooper asks to avoid driving on roads east of I-95 south of US 70 if necessary.

If you have to go to Wilmington, the NC DOT is recommending three routes with part of I-40 still closed.

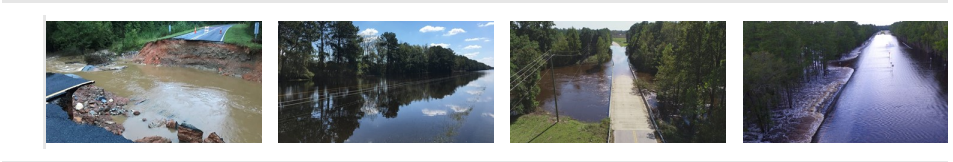
Getting to Wilmington

- From the south, take U.S. 17
- From the north, travel on Interstate 40 East to N.C. 24 East (exit 373), then onto U.S. 17 South
- From Fayetteville, take N.C. 87 to U.S. 701 South to N.C. 211 East to U.S. 74 East

PHOTOS | Mind Blowing Look at Florence’s Destruction On



01 / 17 Clyde King Road in Seagrove was washed out by a creek running through it. WFMY News 2 photo.



Some closures that are still in effect:

- I-95 remains closed from US 64 (Exit 138) to South Carolina
- I-40 remains closed from NC 41 (Exit 385) to Wilmington

NCDOT advises drivers to avoid Bladen, Brunswick, Columbus, Duplin, Jones, Lenoir, Pender, Robeson, Sampson, Scotland, and southeastern Wayne counties.

NC Fire Department Sprays Fish Off I-40 After Florence



The Person Street Bridge in Fayetteville has reopened after closing on Tuesday.



Amy Cutler
@AmyCutlerNews

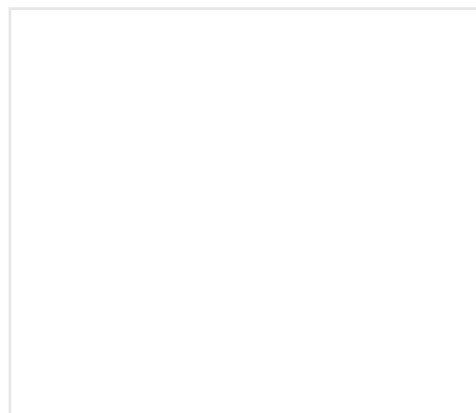
The Person Street bridge in @CityOfFayNC has now reopened. It'd been closed since Tuesday. #florence @WNCN

5:25 PM - Sep 22, 2018

[See Amy Cutler's other Tweets](#)

FRIDAY (September 21) UPDATE from NCDOT-- Travel remains dangerous in 17 southeastern North Carolina counties where hundreds of roads remain closed and the threat of rising floodwaters continues according to NCDOT.

The number of closures on N.C. Department of Transportation (NCDOT) roads dropped Friday to 650 a peak of 1,600 on Monday. Yet three major river basins – Lumber, Cape Fear and Neuse – will see floodwaters crest through this weekend and into next week. NCDOT, the Highway Patrol and emergency officials are urging motorists not to travel in the state's 17 worst-hit counties where many roads are still under water.



[RELATED | 4 Ways To Check Rising River Levels Near You](#)

[Check Road Closures Anytime Here](#)

Those affected counties are: Bladen, Brunswick, Columbus, western Craven (west of U.S. 17), Cumberland, Duplin, Harnett, Hoke, southern Johnston (south of U.S. 70), Jones, Lenoir, New Hanover, Pender, Robeson, Sampson, Scotland and southern Wayne (south of U.S. 70 Business).

For their safety, drivers are advised to not travel in the area south of U.S. 70 and east of U.S. 1 unless it is critical.

Many navigation aids may not have updated information, especially as floodwaters rise and fall.

Sections of Interstates 95 and 40 remain flooded with multiple closures.

I-95 in South Carolina reopened at 4 p.m. Friday, allowing North Carolina to provide a shorter detour for people traveling through the state. Drivers from Virginia now will be directed to use U.S. 64 West (Exit 144) to I-440 West to I-40 West to U.S. 1 South to U.S. 15/501 in Aberdeen to U.S. 74 back to I-95 in Robeson County.

Due to ongoing flooding, a safe, stable or reliable route for the public to get to and from Wilmington is available.

For those who must travel to other impacted areas, the following routes are the least likely to flood, but people should get the latest information on road conditions from www.DriveNC.gov.

You can also use I-40 to Exit 373 and NC 24 to reach Jacksonville.

From Raleigh to Kinston

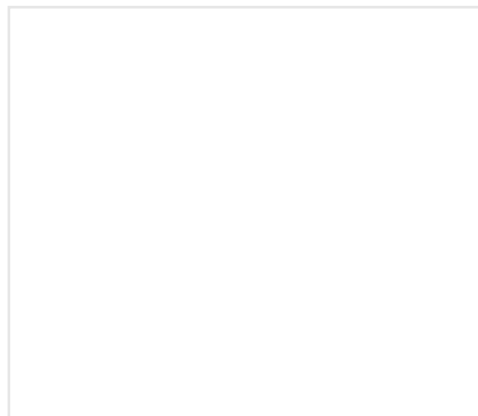
I-440 to U.S. 64 East, Take Exit 436 to U.S. 264 East to U.S. 264 East to N.C. 11 South in Greenville County on N.C. 11 South to Kinston

From Raleigh to New Bern

I-440 to U.S. 64 East, Take Exit 436 to U.S. 264 East, U.S. 264 East through Greenville to Washington, I-95 to Washington, take U.S. 264 East to U.S. 17 South onto U.S. 17 South to New Bern

From Raleigh to Havelock

I-440 to U.S. 64 East, Take Exit 436 to U.S. 264 East, U.S. 264 East through Greenville to Washington, I-95 to Washington, take U.S. 264 East to U.S. 17 South TO U.S. 17 South to New Bern. In New Bern, take U.S. 17 South to U.S. 70 East to U.S. 70 East to Havelock



From Raleigh to Morehead City

I-440 to U.S. 64 East. Take Exit 436 to U.S. 264 East to U.S. 264 East through Greenville to Washington, I-95 to Washington, take U.S. 264 East to U.S. 17 South to U.S. 17 South to New Bern. In New Bern, take U.S. 17 South to U.S. 70 East onto U.S. 70 East through Havelock to Morehead City

From Raleigh to Jacksonville

I-440 to U.S. 64 East to U.S. 264 East through Greenville to Washington to U.S. 17 South to New Bern. In New Bern, take U.S. 70 East to Morehead City to N.C. 24 West to Jacksonville

2-1-1 Call Line Open 24/7 for People in Need of Help: The statewide information line can provide callers with nearby shelter, housing and other storm-related details. Dial 2-1-1 or 888-892-1162, or text Florence 898211. The information line is staffed around the clock to connect North Carolinians to storm resources.

THURSDAY (September 20) UPDATE: Nearly a week after Florence hit North Carolina, the NC State Highway Patrol (NCSHP), emergency response and transportation officials are still asking drivers to not

travel in many areas in southeastern NC.

Many roads remain impassable due to flooding and road conditions are constantly changing.

[RELATED | 4 Ways To Check Rising River Levels Near You](#)

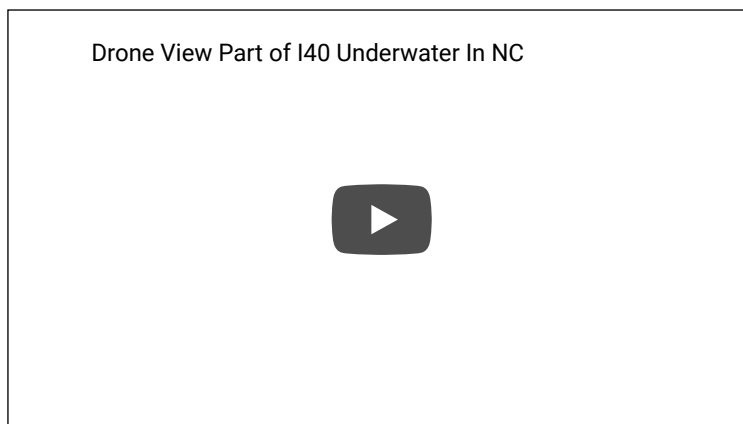
[Check Road Closures Anytime Here](#)

Travel is not recommended in the following counties: Bladen, Brunswick, Columbus, western Craver (west of U.S. 17), Cumberland, Duplin, Harnett, Hoke, southern Johnston (south of U.S. 70), Jones, Lenoir, New Hanover, Pender, Robeson, Sampson, Scotland and southern Wayne (south of U.S. 70 Business).

[RELATED | Driving Through a Barricaded Road Is Illegal and Dangerous](#)

[RELATED | LIST: Major NC highways, Triad roads closed due to flooding](#)

“Several roadways in the affected areas are still under water, presenting very dangerous driving conditions,” said Colonel Glenn McNeill Jr., commander of the State Highway Patrol. “While some roads are starting to open, motorists should avoid travel in flooded areas unless absolutely necessary and should never drive on flooded roads.”



There are many roads where water levels will continue to rise making the roads impassable during the 72 hours or more depending on when the local rivers crest. Although water is receding on some roads, those roads and bridges may be damaged and road closures are still in effect. Motorists should follow signs to avoid dangerous roads.

First responders are also asking driver to avoid relying on their GPS systems. They say under normal conditions, GPS systems are reliable for navigation but are less reliable in the aftermath of a hurricane when conditions are frequently changing.

[RELATED | Driving Through a Barricaded Road Is Illegal and Dangerous](#)

Sections of Interstates 95 and 40 remain flooded with multiple closures. At this time, there is not a safe, stable or reliable route for the public to use to get to and from Wilmington.

► **Download the WFMY News 2 App:** [Apple Users](#), [Android Users](#)

BEST DETOURS:

Traffic using I-95 South from Virginia should use U.S. 64 West (Exit 138) to Interstate 540 West to I-40 West to U.S. 321 South to I-85 South. Follow directions in South Carolina to re-access I-95.

If you must travel, be prepared for long delays. State officials said the following routes are the least lik flood but urged people to get the latest information on travel conditions from www.DriveNC.gov. Road are clear at one time may not be later.

From Raleigh to Kinston

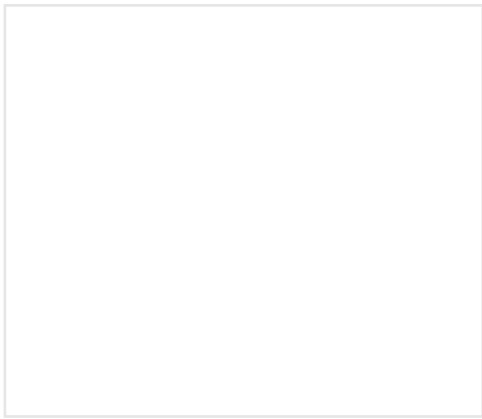
-
- I-440 to U.S. 64 East
- Take Exit 436 to U.S. 264 East
- U.S. 264 East to N.C. 11 South in Greenville
- Continue on N.C. 11 South to Kinston

From Raleigh to New Bern

- I-440 to U.S. 64 East
- Take Exit 436 to U.S. 264 East
- U.S. 264 East through Greenville to Washington
- In Washington, take U.S. 264 East to U.S. 17 South
- U.S. 17 South to New Bern

From Raleigh to Havelock

- I-440 to U.S. 64 East
- Take Exit 436 to U.S. 264 East
- U.S. 264 East through Greenville to Washington
- In Washington, take U.S. 264 East to U.S. 17 South
- U.S. 17 South to New Bern



- In New Bern, take U.S. 17 South to U.S. 70 East
- U.S. 70 East to Havelock

From Raleigh to Morehead City

- I-440 to U.S. 64 East
- Take Exit 436 to U.S. 264 East
- U.S. 264 East through Greenville to Washington
- In Washington, take U.S. 264 East to U.S. 17 South
- U.S. 17 South to New Bern
- In New Bern, take U.S. 17 South to U.S. 70 East
- U.S. 70 East through Havelock to Morehead City

From Raleigh to Jacksonville

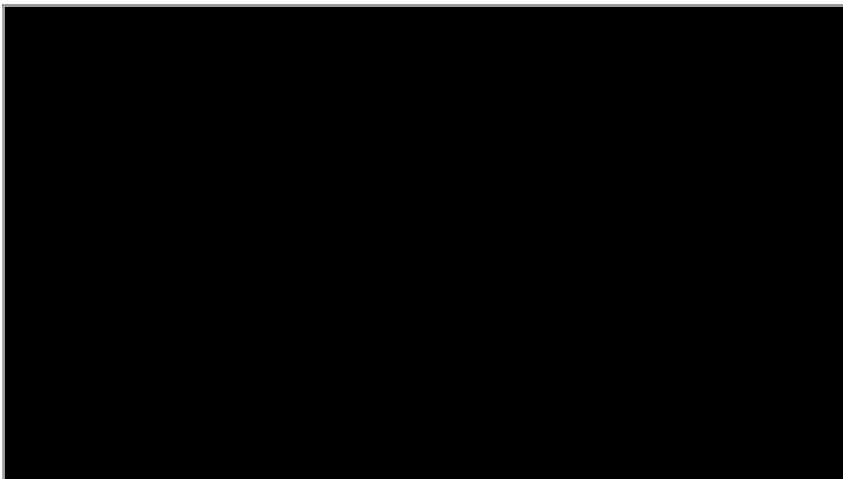
- I-440 to U.S. 64 East

- U.S. 264 East through Greenville to Washington
- U.S. 17 South to New Bern
- U.S. 70 East to Morehead City
- N.C. 24 West to Jacksonville

Conditions continue to change and travel should be confirmed before traveling. For more information road conditions, please visit DriveNC.Gov.

Follow **WFMY News 2** on [Facebook](#) and [Twitter](#)

► **Make it easy to keep up to date with more stories like this. Download the WFMY News 2 App: [App Users](#), [Android Users](#)**



Startling Before and After Florence Photos

You May Like

Sponsored Links by Ta

Gwinner, North Dakota Drivers Are Stunned By This New Rule

EverQuote Insurance Quotes

If Your Dog Eats Grass (Do This Everyday)

Ultimate Pet Nutrition Nutra Thrive Supplement

The 1 Worst Carb You Need to Stop Eating in 2019 (Not Pasta)

Nucific

There Is One Protein That Can Restart Your Fat Burner, And No, It's Not Fish

Gundry MD

If Your Cat Vomits (Do This Every Day)

Ultimate Pet Nutrition

Handicap Higher Than 10? This Is The Driver For You

GX7 Golf

You're Probably Overpaying at Amazon – This Genius Trick Will Fix That

Honey

One Thing All Liars Have in Common, Brace Yourself

TruthFinder People Search Subscription

If You Can Qualify for Any Credit Card, These Are the Top 6

NerdWallet

Best Luxury Vehicles for Under \$50k

Luxury Cars | Sponsored links

Don't Do It Yourself - Hire a Gwinner Handyman for Your Home Projects

HomeAdvisor

Gruesome Civil War Photos Released From Government Vault

BlitzLift

Thousands Are Switching To This New Cowboy Boot (Here's Why)

Tecovas

10 Years After 'Two and a Half Men' Angus T. Jones Now Has A Regular Job

NinjaJournalist

They Broke Up Only A Few Months Ago But Apparently She Has Other Plans In M

DirectExpose

Here's Why Guys Are Obsessed With This Underwear...

The Weekly Brief | Mack Weldon

What Does Your Home Design Style Say About You?

Mr. Cooper

