



North Carolina Department of Transportation
Materials and Tests Unit – Product Evaluation Program
Innovative Technologies and Products Awareness Report
February 2nd, 2022



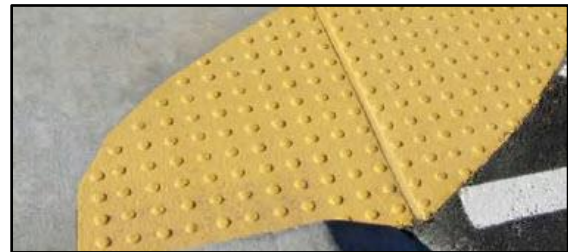
PRODUCT INNOVATION – Nonskid Surface Applied Detectable Warnings



Example of Vanguard Nonskid Surface Applied Detectable Warnings installation with an irregular (curved) contour – image from Vanguard ADA Systems website

Nonskid Surface Applied Detectable Warning are manufactured by Vanguard ADA Systems out of Snohomish Washington. It is currently under evaluation and listed on the Approved Products List (APL) as NP21-9007. These Nonskid Surface Applied Detectable Warnings are an ADA Detectable Warning System that is a liquid applied and textured compound. It is non-porous, flexible, has no seams, is non-skid, and does not crack. It can be applied to all roadway surface materials including steel, concrete, brick, and asphalt. It can also be applied on top of utility vault lids and manholes. It is available in a variety of colors and texture patterns and can cost less than traditional ADA Detectable Warning Systems. For more information, please visit:

<https://vanguardonline.com/>



Close-up of Vanguard Nonskid Surface Applied Detectable Warnings applied at an asphalt crosswalk / concrete curved transition zone – image from Vanguard ADA Systems brochure

PRODUCT HIGHLIGHT – WattleFence™



A new WattleFence™ installed on a jobsite (top), close-up of a WattleFence™ that retained eroded soils due to a large rain event (bottom) – images from Western Excelsior brochure

The WattleFence™ is manufactured by Western Excelsior Corporation out of Macon, Georgia. It is currently under evaluation and listed on the APL as NP21-9025. It is a sediment retention device composed of an outer biodegradable woven jute fabric, and an inner coconut fiber core. The WattleFence™ innovates by combining both wattles and silt fencing into one product. This allows for much higher water flow rates, while also achieving a significant reduction in stormwater sediment. The WattleFence™ is manufactured in rolls 9 inches in height, with a 6-inch horizontal apron that are 100 feet long. Wooden stakes are inserted every 18 inches to support it. The WattleFence™ can be easily rolled up and delivered for shipping, 16 one-hundred-foot-long rolls can be shipped on one pallet. For more information, please visit:

<https://www.westernexcelsior.com/products/sediment.html>